

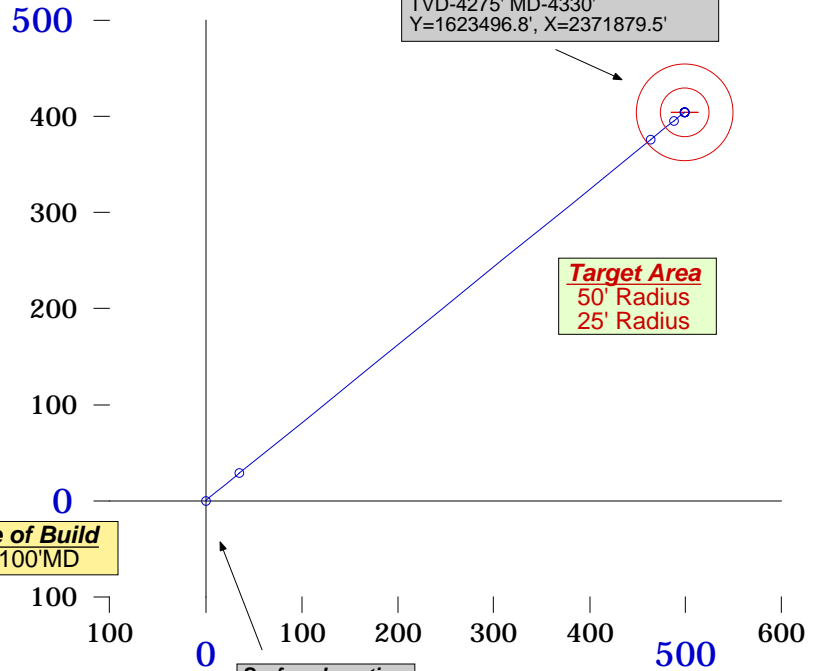
**Ursa Operating Company LLC**

Norcross A-17  
Garfield County, CO



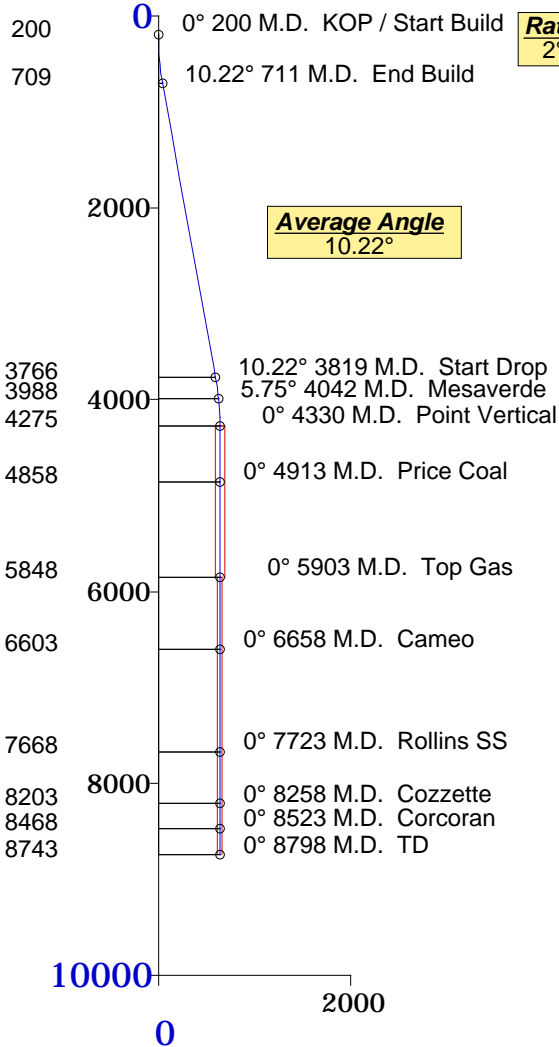
**Horizontal Plan**  
1" = 200'

**Proposed Target**  
642.53' Displacement from S/L  
@ 50.97° Azimuth from S/L  
North-404.63' East-499.11' of S/L  
TVD-4275' MD-4330'  
Y=1623496.8', X=2371879.5'



**Vertical Section**  
1" = 2000'

**Plane of Proposal**  
50.97° Azimuth



**Rate of Build**  
2°/100'MD

**Average Angle**  
10.22°

**Rate of Drop**  
2°/100'MD

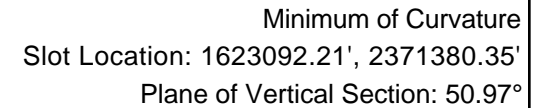
**Surface Location**  
Y=1623092.21'  
X=2371380.35'  
NAD 83

Formation	TVD
Mesaverde	3988
Price Coal	4858
Top Gas	5848
Cameo	6603
Rollins SS	7668
Cozzette	8203
Corcoran	8468
TD	8743



06-17-2008

Measured Depth Feet	BORE Inc Degrees	HOLE Direction Degrees	True Vertical Depth Feet	RECTANGULAR COORDINATES		LAMBERT COORDINATES		Vertical Section Feet	CLOSURES		Dogleg Severity Deg/100'
				North(-South) Feet	East(-West) Feet	Y Feet	X Feet		Distance Feet	Direction Deg	
KOP / Start Build	200.00	0.00	200.00	0.00	0.00	1623092.2	2371380.3	0.00	0.00	0.00	0.00
	300.00	2.00	299.98	1.10	1.36	1623093.3	2371381.7	1.75	1.75	50.97	2.00
	400.00	4.00	399.84	4.39	5.42	1623096.6	2371385.8	6.98	6.98	50.97	2.00
	500.00	6.00	499.45	9.88	12.19	1623102.1	2371392.5	15.69	15.69	50.97	2.00
	600.00	8.00	598.70	17.56	21.66	1623109.8	2371402.0	27.88	27.88	50.97	2.00
End Build	700.00	10.00	697.47	27.41	33.81	1623119.6	2371414.2	43.52	43.52	50.97	2.00
	711.22	10.22	708.52	28.65	35.34	1623120.9	2371415.7	45.49	45.49	50.97	2.00
	1211.22	10.22	1200.58	84.54	104.28	1623176.7	2371484.6	134.24	134.24	50.97	0.00
	1711.22	10.22	1692.64	140.43	173.22	1623232.6	2371553.6	222.99	222.99	50.97	0.00
	2211.22	10.22	2184.70	196.32	242.16	1623288.5	2371622.5	311.74	311.74	50.97	0.00
Start Drop	2711.22	10.22	2676.76	252.21	311.10	1623344.4	2371691.4	400.49	400.49	50.97	0.00
	3211.22	10.22	3168.82	308.10	380.04	1623400.3	2371760.4	489.24	489.24	50.97	0.00
	3711.22	10.22	3660.88	363.99	448.97	1623456.2	2371829.3	577.98	577.98	50.97	0.00
	3818.54	10.22	3766.49	375.98	463.77	1623468.2	2371844.1	597.03	597.03	50.97	0.00
	3918.54	8.22	3865.19	386.08	476.22	1623478.3	2371856.6	613.06	613.06	50.97	2.00
Mesaverde	4018.54	6.22	3964.39	394.00	485.99	1623486.2	2371866.3	625.63	625.63	50.97	2.00
	4042.28	5.75	3988.00	395.56	487.91	1623487.8	2371868.3	628.11	628.11	50.97	2.00
	4142.28	3.75	4087.66	400.77	494.35	1623493.0	2371874.7	636.39	636.39	50.97	2.00
	4242.28	1.75	4187.54	403.79	498.07	1623496.0	2371878.4	641.19	641.19	50.97	2.00
	4329.76	0.00	4275.00	404.63	499.11	1623496.8	2371879.5	642.53	642.53	50.97	2.00
Point Vertical											
Price Coal	4912.76	0.00	4858.00	404.63	499.11	1623496.8	2371879.5	642.53	642.53	50.97	0.00



Measured Depth Feet	BORE Inc Degrees	HOLE Direction Degrees	True Vertical Depth Feet	RECTANGULAR COORDINATES		LAMBERT COORDINATES		Vertical Section Feet	CLOSURES		Dogleg Severity Deg/100'
				North(-South)	East(-West)	Y Feet	X Feet		Distance Feet	Direction Deg	
				Feet	Feet						
5902.76	0.00	50.97	5848.00	404.63	499.11	1623496.8	2371879.5	642.53	642.53	50.97	0.00
Top Gas											
6657.76	0.00	50.97	6603.00	404.63	499.11	1623496.8	2371879.5	642.53	642.53	50.97	0.00
Cameo											
7722.76	0.00	50.97	7668.00	404.63	499.11	1623496.8	2371879.5	642.53	642.53	50.97	0.00
Rollins SS											
8257.76	0.00	50.97	8203.00	404.63	499.11	1623496.8	2371879.5	642.53	642.53	50.97	0.00
Cozzette											
8522.76	0.00	50.97	8468.00	404.63	499.11	1623496.8	2371879.5	642.53	642.53	50.97	0.00
Corcoran											
8797.76	0.00	50.97	8743.00	404.63	499.11	1623496.8	2371879.5	642.53	642.53	50.97	0.00
TD											
Final Station Closure Distance: 642.53' Direction: 50.97°											