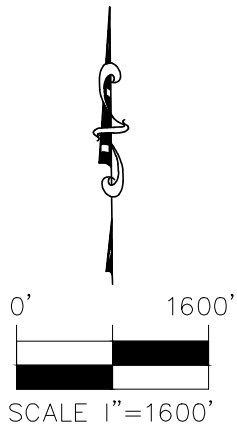
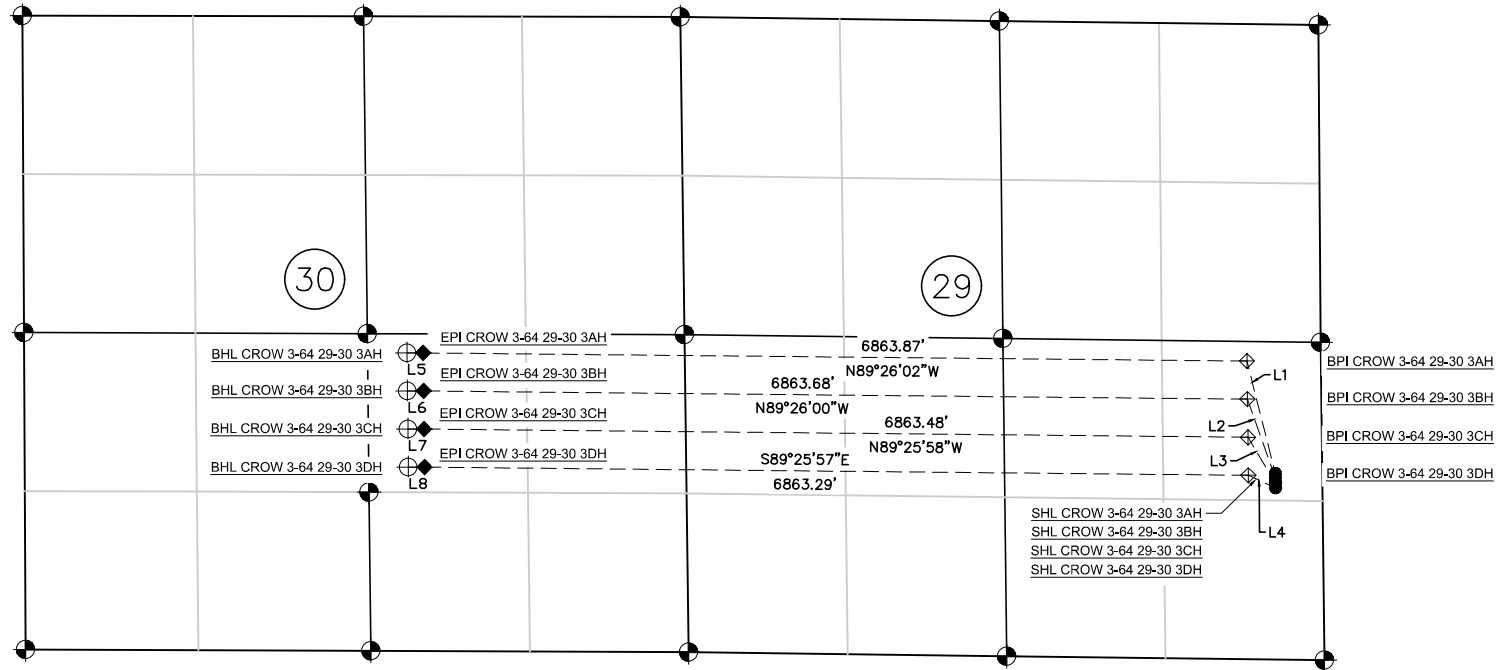


**CROW 3-64 29-30 3AH, 3BH, 3CH & 3DH**  
**NE1/4 SE1/4 OF SECTION 29 T3S R64W, COUNTY OF ADAMS, STATE OF COLORADO.**  
**MULTI-WELL PLAN**



LINE TABLE		
LINE	LENGTH	BEARING
L1	965.59'	N14°12'19"W
L2	699.12'	N19°30'16"W
L3	445.78'	N31°02'39"W
L4	249.47'	N65°08'35"W
L5	135.03'	N89°44'32"W
L6	135.03'	N89°44'32"W
L7	135.03'	N89°44'32"W
L8	135.03'	N89°44'32"W

LEGEND

- PROPOSED WELL LOCATION
- ⊕ BOTTOM HOLE LOCATION
- ⊙ FOUND MONUMENT
- ⬠ BEGIN PRODUCTION INTERVAL
- ◆ END PRODUCTION INTERVAL

PREPARED FOR

**ConocoPhillips**

**ATWELL**  
 888.880.4200 www.atwell-greys.com  
 143 UNION BOULEVARD, SUITE 700  
 LAKEWOOD, CO 80229  
 303.482.1100

**CROW 3-64 29-30**

SECTION 29 T3S R64W

FIELD DATE	DRAFT DATE	DRN BY	CHK BY
04/16/2018	04/16/2018	SJM	DJC

JOB NUMBER 17003080