

Construction and Stormwater Inspection

May 14, 2018

Operator: NICKEL ROAD OPERATING LLC #10669

Location ID: 454131

Inspection Document #: 682403558

Weld County, CO

NWSW Section 5 T3N R68W

Chris Binschus
Reclamation Specialist, COGCC



COLORADO

**Oil & Gas Conservation
Commission**

Department of Natural Resources

Inspection Photos
Location Name: Noble /3N68W5
Location ID: 454131



Photo 1. Photo taken from the entrance of the location, facing North. Operator has failed to install a vehicle tracking device to prevent track of material offsite.



Photo 2. Photo taken from the entrance of the location, facing East. See comments under Photo 1.

Inspection Photos
Location Name: Noble /3N68W5
Location ID: 454131



Photo 3. Photo taken from the entrance of the location at culvert #1, facing South. Culverts have been installed along the roadside ditch. Operator needs to stabilize around the culvert to minimize erosion and install inlet/outlet protection.



Photo 4. Photo taken from the entrance of the location at culvert #2, facing South. See comments under Photo 3.

Inspection Photos
Location Name: Noble /3N68W5
Location ID: 454131



Photo 5. Photo taken from the western perimeter of the location, facing South. Ditch and berm has been installed around the perimeter of the location. Topsoil has been stockpiled along the western perimeter. Does not appear the Operator has salvaged all the topsoil from the location.



Photo 6. Photo taken from the southeast perimeter of the location, facing North. Rip-rap has been installed in conjunction with the ditch and berm BMP. This would not be considered a sediment trap.



Photo 7. Photo taken from the eastern perimeter of the location, facing North. Based off field observations, Operator has failed to salvage all the topsoil from the location.

Inspection Photos
Location Name: Noble /3N68W5
Location ID: 454131

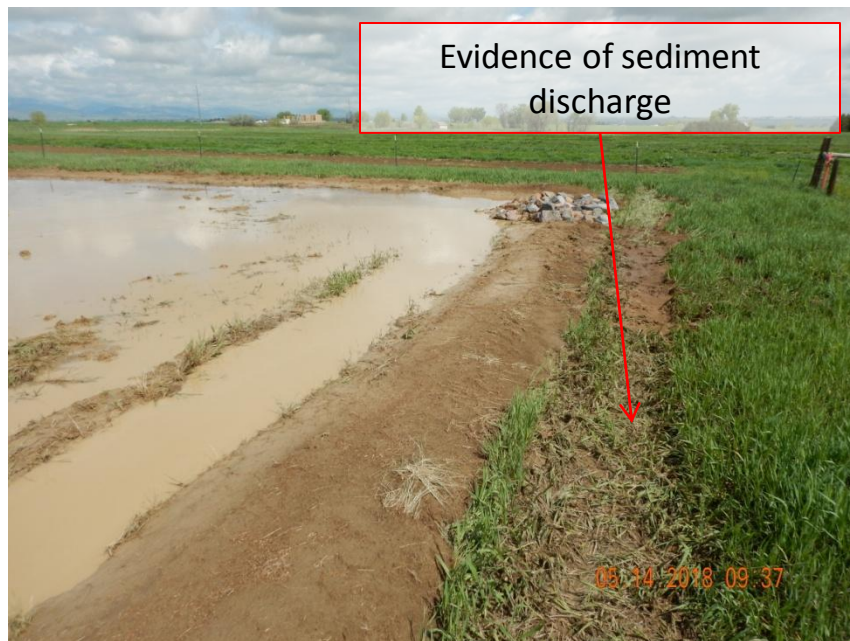


Photo 8. Photo taken from the northwest perimeter of the location, facing North. Sediment laden stormwater has discharged off location. Ditch and berm BMP and rip-rap are not sufficient to prevent sediment laden stormwater from discharging off location. Operator needs to installed sufficient erosion and sediment control BMP immediately.



Photo 9. Photo taken from the northwest perimeter of the location, facing West. See comments under Photo 8. Photo illustrates sediment laden discharge actively discharging off location.

Inspection Photos
Location Name: Noble /3N68W5
Location ID: 454131



Photo 10. Photo taken from the northwest perimeter of the location, facing West. See comments under Photo 8.