

HALLIBURTON

iCem[®] Service

TERRA ENERGY PARTNERS

For: Terra

Date: Tuesday, February 20, 2018

PA 514-24 Surface

API#05-045-23646

Sincerely,

Grand Junction Cement Engineering

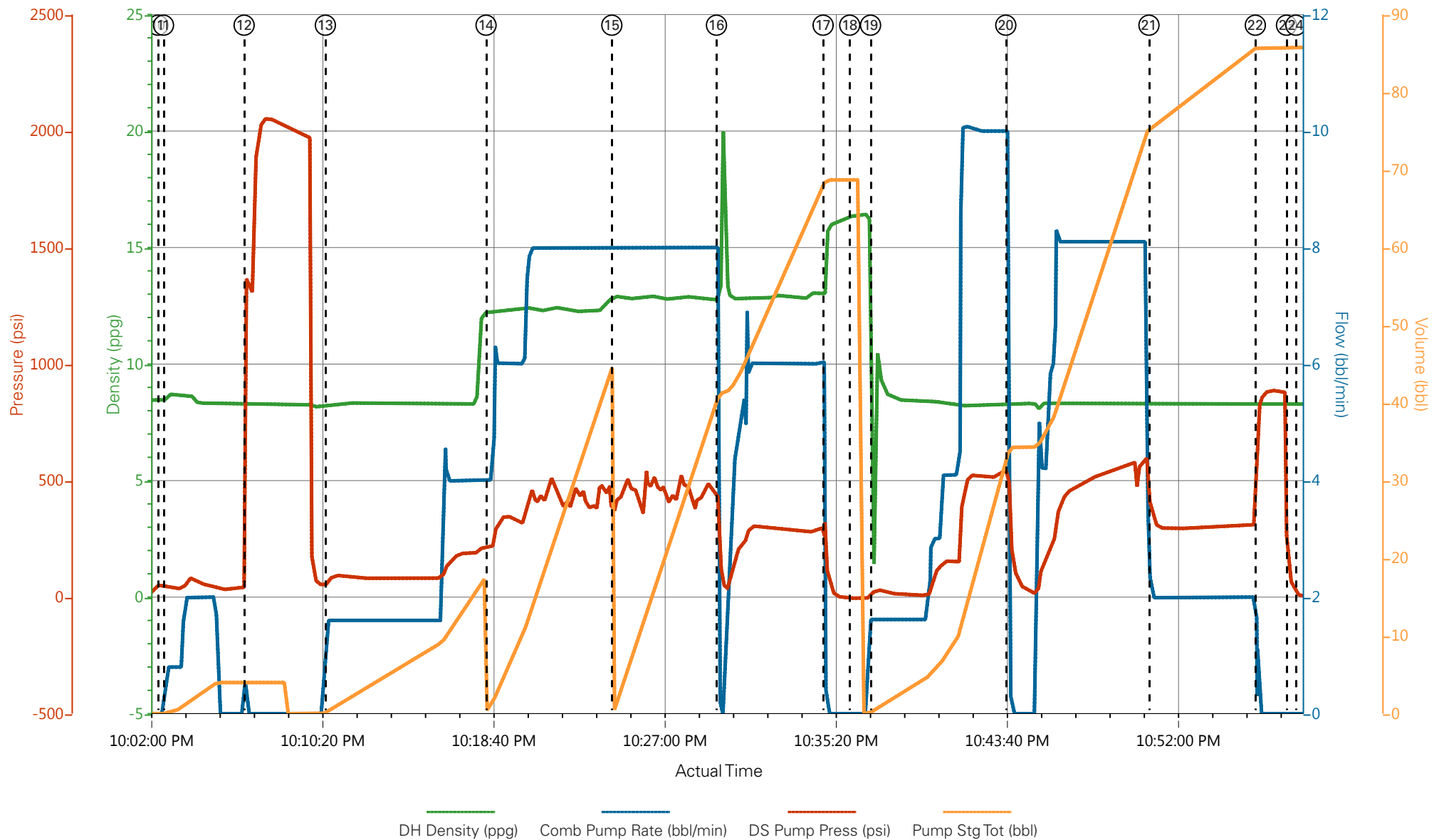
2.0 Real-Time Job Summary

2.1 Job Event Log

| Type | Seq. No. | Graph Label | Date | Time | Source | Downhole Density (ppg) | Combined Pump Rate (bbl/min) | Driv-Side Pump Pressure (psi) | Pump Stage Total (bbl) | Comments |
|-------|----------|---------------------------------------|-----------|----------|--------|---------------------------|---------------------------------|----------------------------------|---------------------------|---|
| Event | 1 | Call Out | 2/20/2018 | 13:00:00 | | | | | | Requested on Location @ 18:30 |
| Event | 2 | Pre-Convoy Safety Meeting | 2/20/2018 | 16:00:00 | | | | | | |
| Event | 3 | Crew Leave Yard | 2/20/2018 | 16:10:00 | | | | | | 1 Elite, 1 660, 1 pickup |
| Event | 4 | Arrive At Loc | 2/20/2018 | 18:30:00 | | | | | | Rig pulling drill pipe |
| Event | 5 | Assessment Of Location Safety Meeting | 2/20/2018 | 18:35:00 | | | | | | JSA completed - Customer offered/received SDS - water test pH 7.0, CI <200, temp 68 degrees |
| Event | 6 | Pre-Rig Up Safety Meeting | 2/20/2018 | 18:45:00 | | | | | | |
| Event | 7 | Rig-Up Equipment | 2/20/2018 | 19:00:00 | | | | | | 1 hardline to standpipe, water hoses to upright, bulk hoses to 660. |
| Event | 8 | Other | 2/20/2018 | 19:45:00 | | | | | | Rig Circulated 30 mins prior to cement job at 450 gpm 300 psi |
| Event | 9 | Pre-Job Safety Meeting | 2/20/2018 | 21:32:09 | | | | | | All HES personnel, rig crew, and company rep |
| Event | 10 | Start Job | 2/20/2018 | 22:02:28 | | | | | | OH 13 1/2, TD 1151, TP 1145.23, SJ 43.80, CSG 9 5/9" 32.3#, MUD 9.6 PPG, |
| Event | 11 | Fill Lines | 2/20/2018 | 22:02:44 | | 8.33 | 2 | 63 | 5 | Fresh Water |
| Event | 12 | Test Lines | 2/20/2018 | 22:06:40 | | | | 2054 | | Held pressure 2 minutes no leaks |
| Event | 13 | Pump Sapcer | 2/20/2018 | 22:10:37 | | 8.33 | 4 | 200 | 15 | Fresh Water |
| Event | 14 | Pump Lead Cement | 2/20/2018 | 22:18:27 | | 12.3 | 8 | 545 | 53 | 125 sks, 12.3 ppg, 2.38 Yield, 13.77 Gal/Sk |
| Event | 15 | Pump Tail Cement | 2/20/2018 | 22:24:34 | | 12.8 | 8 | 524 | 65.8 | 175 sks, 12.8 ppg, 2.11 Yield, 11.78 Gal/Sk |
| Event | 16 | Shut Down | 2/20/2018 | 22:34:52 | | | | | | Wash up on top of plug |

| | | | | | | | | | | |
|-------|----|-----------------------------|-----------|----------|------|----|-----|------|--|--|
| Event | 17 | Drop Top Plug | 2/20/2018 | 22:36:09 | | | | | | Customer verified top plug launched |
| Event | 18 | Pump Displacement | 2/20/2018 | 22:37:10 | 8.33 | 10 | 600 | 86.7 | | Fresh Water |
| Event | 19 | Shutdown | 2/20/2018 | 22:43:45 | | | | | | Shut Down To Fix Leak |
| Event | 20 | Slow Rate | 2/20/2018 | 22:50:44 | 8.33 | 2 | 300 | 76.7 | | Slow Rate 10 bbls to calculated displacement |
| Event | 21 | Bump Plug | 2/20/2018 | 22:55:54 | 8.33 | | 890 | | | Plug Bumped at psi, Brought up to psi |
| Event | 22 | Check Floats | 2/20/2018 | 22:57:25 | | | | | | Floats Held 1/2 bbl back to truck |
| Event | 23 | End Job | 2/20/2018 | 22:57:53 | | | | | | good returns throughout job, 25 bbls of cement to surface. |
| Event | 24 | Pre-Rig Down Safety Meeting | 2/20/2018 | 23:07:39 | | | | | | 40 lbs sugar, No add hours |
| Event | 25 | Rig-Down Equipment | 2/20/2018 | 23:10:16 | | | | | | |
| Event | 26 | Pre-Convoy Safety Meeting | 2/20/2018 | 23:54:29 | | | | | | |
| Event | 27 | Crew Leave Location | 2/20/2018 | 23:58:48 | | | | | | Thanks For Using Halliburton Cement. Chris Martinez And Crew |

PA 514-24 Surface



- | | | | | |
|---|---|-------------------------------------|------------------------------------|---------------------------------------|
| ① Call Out n/a;n/a;n/a;n/a | ⑤ Assessment Of Location Safety Meeting n/a;n/a;n/a;n/a | ⑨ Pre-Job Safety Meeting 0.02;0;2;0 | ⑬ Pump Saper 8.25;1.6;77;0.3 | ⑰ Shut Down 13.82;0.2;210;41.3 |
| ② Pre-Convoy Safety Meeting n/a;n/a;n/a;n/a | ⑥ Pre-Rig Up Safety Meeting n/a;n/a;n/a;n/a | ⑩ Start Job 8.43;0;56;0 | ⑭ Pump Lead Cement 12.21;4;218;0.9 | ⑱ Drop Top Plug 16.3;0.2;210;41.3 |
| ③ Crew Leave Yard n/a;n/a;n/a;n/a | ⑦ Rig-Up Equipment n/a;n/a;n/a;n/a | ⑪ Fill Lines 8.65;0.8;48;0.1 | ⑮ Pump Tail Cement 12.9;8;373;0.9 | ⑲ Pump Displacement 16.3;0.2;210;41.3 |
| ④ Arrive At Loc n/a;n/a;n/a;n/a | ⑧ Other n/a;n/a;n/a;n/a | ⑫ Test Lines 8.29;0;1353;4 | ⑯ Shutdown 12.78;0.2;210;41.3 | ⑳ Shutdown 8.33;7.3;0.1;0.1 |

PA 514-24 Surface

