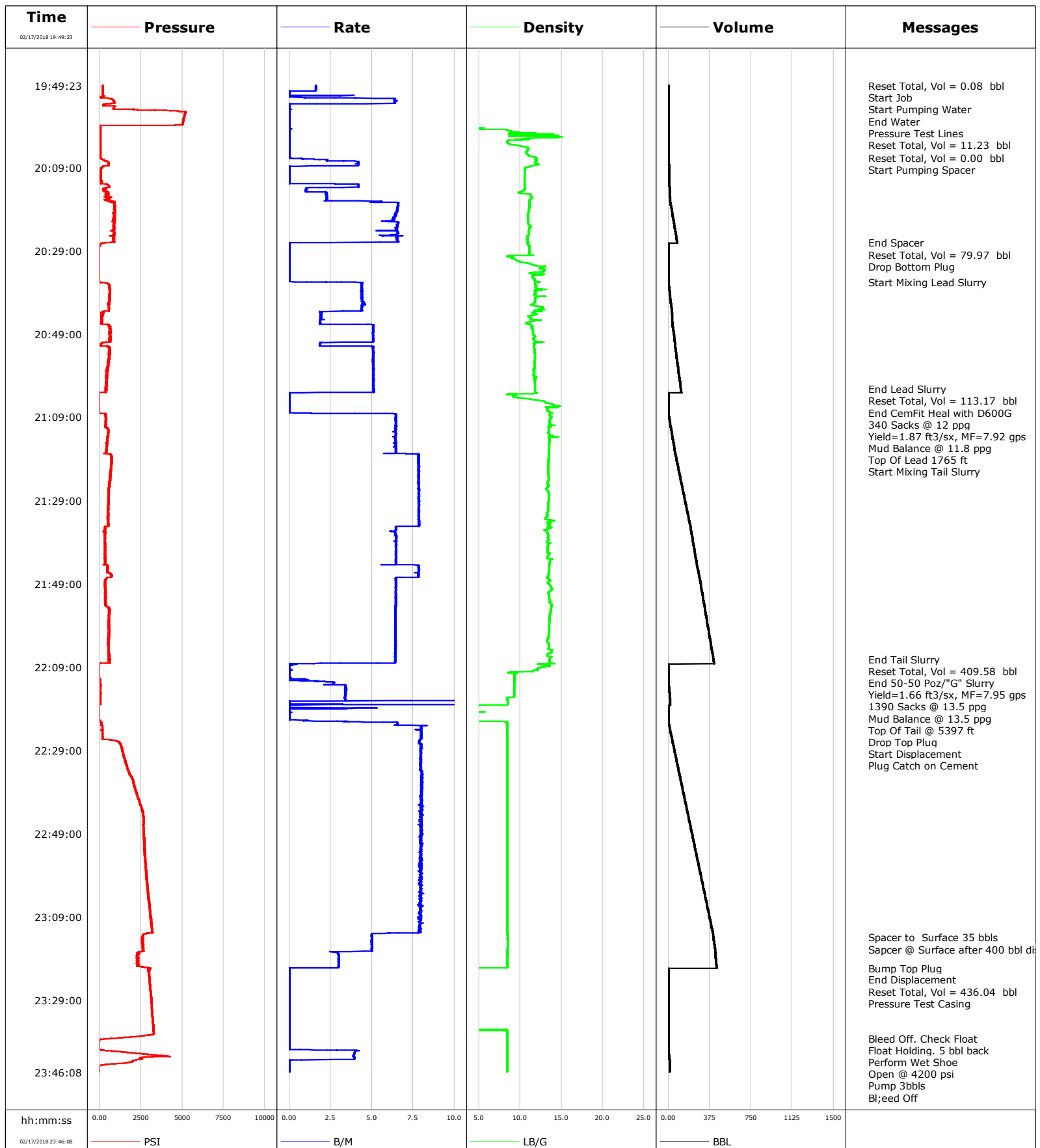


Well Verde 13-2HZ
Field Wattenberg
Engineer Wence Luste
Country United States

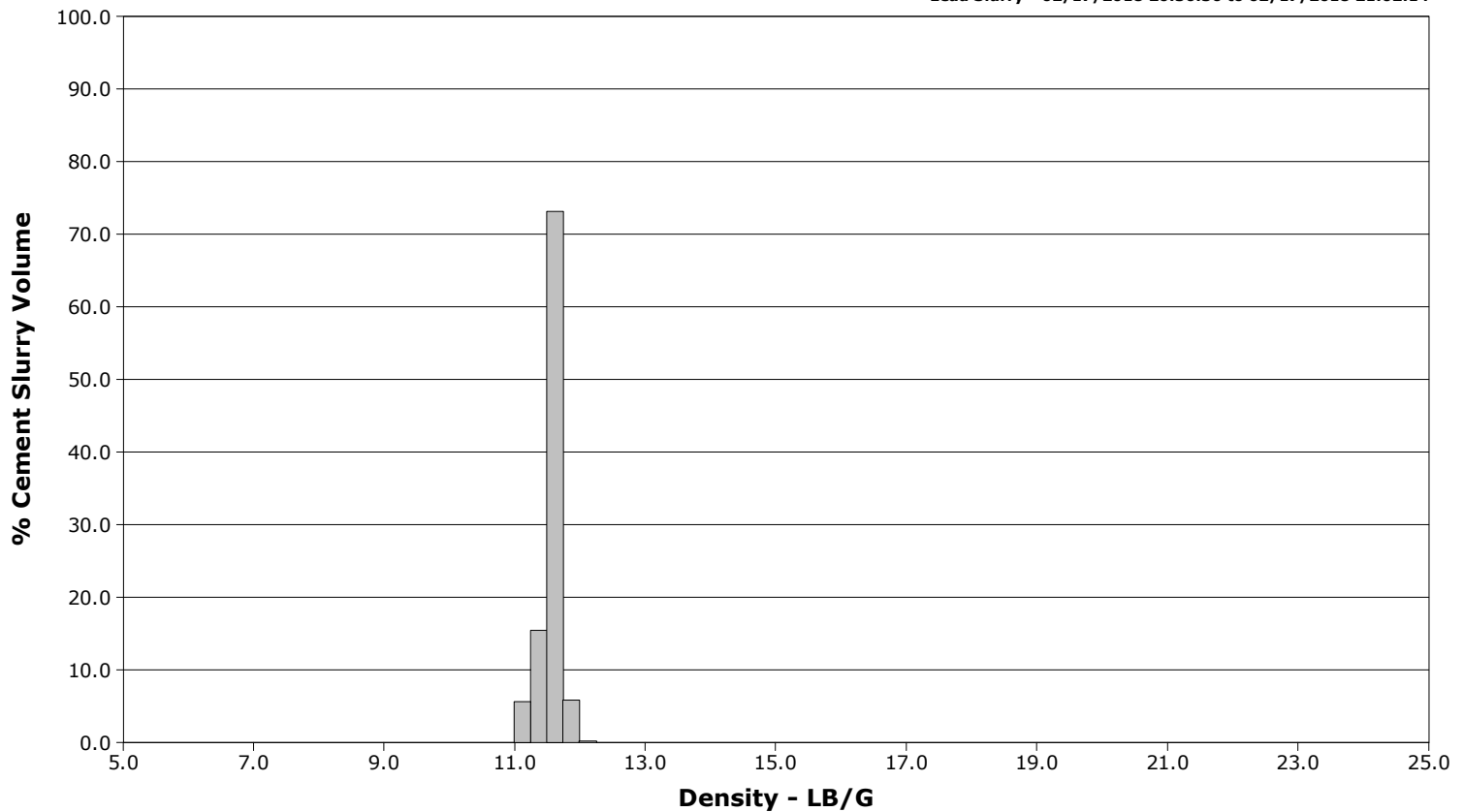
Client ANADARKO PETROLEUM COMPANY (ED)
SIR No. DUNZ-00186
Job Type 5 1/2" Production
Job Date 02-17-2018



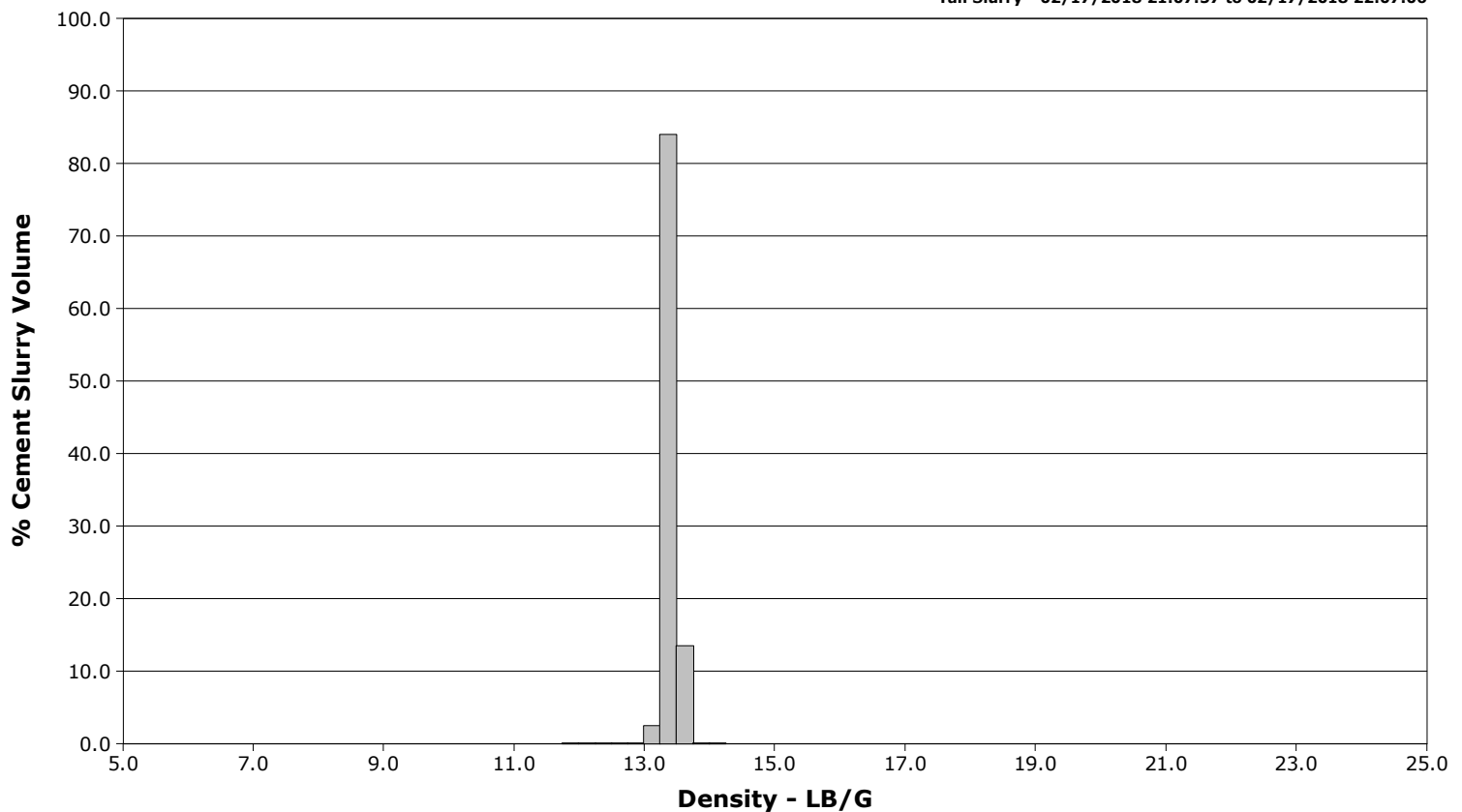
Well Verde 13-2HZ
Field Wattenberg
Engineer Wence Luste
Country United States

Client ANADARKO PETROLEUM COMPANY (ED)
SIR No. DUNZ-00186
Job Type 5 1/2" Production
Job Date 02-17-2018

Lead Slurry - 02/17/2018 20:36:36 to 02/17/2018 21:02:14



Tail Slurry - 02/17/2018 21:07:57 to 02/17/2018 22:07:06



Cementing Service Report

				Customer ANADARKO PETROLEUM COMPANY (ED)			Job Number DUNZ-00186			
Well Verde 13-2HZ			Location (legal) 05123460180000			Schlumberger Location		Job Start Feb/17/2018		
Field Wattenberg		Formation Name/Type		Deviation 90 deg	Bit Size 7.9 in	Well MD 18708.0 ft		Well TVD 7323.0 ft		
County		State/Province Colorado		BHP psi	BHST 228 degF	BHCT 228 degF	Pore Press. Gradient lb/gal			
Well Master 0631750498		API/UWI 05123460180000								
Rig Name PD 564	Drilled For Oil & Gas	Service Via Land		Casing/ Liner						
				Depth, ft	Size, in	Weight, lb/ft	Grade	Thread		
Offshore Zone	Well Class New	Well Type Development		1831.0	9.6	36.0	J55	8RD		
				18706.2	5.5	17.0	P110	8RD		
Drilling Fluid Type OBM		Max. Density 9.50 lb/gal	Plastic Viscosity 12.000 cP	Tubing/Drill Pipe						
				T/D	Depth, ft	Size, in	Weight, lb/ft	Grade Thread		
Service Line Cementing	Job Type 5 1/2" Production									
Max. Allowed Tub. Press psi	Max. Allowed Ann. Press psi	WH Connection 5 1/2" C-Head		Perforations/Open Hole						
				Top, ft	Bottom, ft	shot/ft	No. of Shots	Total Interval		
Service Instructions Perform job as per proposal.				ft	ft			ft		
				ft	ft			Diameter in		
				ft	ft					
				Treat Down Casing		Displacement 434.6 bbl		Packer Type		Packer Depth ft
				Tubing Vol. bbl		Casing Vol. 234.9 bbl		Annular Vol. 608.0 bbl		Openhole Vol. 1075.0 bbl
Casing/Tubing Secured <input checked="" type="checkbox"/>		1 Hole Vol. Circulated prior to Cement <input checked="" type="checkbox"/>		Casing Tools			Squeeze Job			
Lift Pressure 13000 psi				Shoe Type Float			Squeeze Type			
Pipe Rotated <input type="checkbox"/>		Pipe Reciprocated <input type="checkbox"/>		Shoe Depth 18706.2 ft			Tool Type			
No. Centralizers		Top Plugs 1	Bottom Plugs 1	Stage Tool Type			Tool Depth ft			
Cement Head Type Double				Stage Tool Depth ft			Tail Pipe Size in			
Job Scheduled For Feb/17/2018 18:00		Arrived on Location Feb/17/2018 16:00		Leave Location Feb/18/2018 01:00		Collar Type Float				
						Collar Depth 18694.9 ft				
							Sqz. Total Vol. bbl			
Date	Time 24-hr clock	Treating Pressure PSI	Flow Rate B/M	Density LB/G	Volume BBL	Message				
02/17/2018	19:49:23	205	1.6	0.00	0.0	Started Acquisition				
02/17/2018	19:49:25	205	1.6	0.00	0.0	Reset Total, Vol = 0.08 bbl				
02/17/2018	19:49:27	205	1.6	0.00	0.0	Start Job				
02/17/2018	19:50:08	205	1.6	0.00	0.0					
02/17/2018	19:50:53	194	0.0	0.00	0.0					
02/17/2018	19:51:38	190	0.0	0.00	0.0					
02/17/2018	19:52:19	48	0.7	0.00	0.0	Start Pumping Water				
02/17/2018	19:52:23	109	1.3	0.00	0.0					
02/17/2018	19:53:08	868	6.5	0.00	0.0					
02/17/2018	19:53:45	663	6.4	0.00	0.0	End Water				
02/17/2018	19:53:53	345	0.0	0.00	0.0					
02/17/2018	19:54:38	859	0.0	0.00	0.0					
02/17/2018	19:55:23	3443	0.0	0.00	0.0					
02/17/2018	19:56:08	5177	0.0	0.00	0.0					
02/17/2018	19:56:53	5121	0.0	0.00	0.0					
02/17/2018	19:57:38	5081	0.0	0.00	0.0					
02/17/2018	19:57:41	5079	0.0	0.00	0.0	Pressure Test Lines				
02/17/2018	19:58:23	5046	0.0	0.00	0.0					
02/17/2018	19:59:08	-60	0.0	0.00	0.0					
02/17/2018	19:59:53	42	0.0	2.79	0.0					
02/17/2018	20:00:23	47	0.0	8.82	0.0	Reset Total, Vol = 11.23 bbl				

Well			Field		Job Start		Customer		Job Number	
Verde 13-2HZ			Wattenberg		Feb/17/2018		ANADARKO PETROLEUM COMPANY (ED		DUNZ-00186	
Date	Time 24-hr clock	Treating Pressure PSI	Flow Rate B/M	Density LB/G	Volume BBL	Message				
02/17/2018	20:01:23	50	0.0	14.57	0.0					
02/17/2018	20:02:08	51	0.0	10.81	0.0					
02/17/2018	20:02:53	51	0.0	8.47	0.0					
02/17/2018	20:03:38	52	0.0	9.17	0.0					
02/17/2018	20:04:23	52	0.0	11.02	0.0					
02/17/2018	20:05:08	52	0.0	10.86	0.0					
02/17/2018	20:05:53	52	0.0	10.85	0.0					
02/17/2018	20:06:38	52	0.0	11.83	0.0					
02/17/2018	20:06:48	53	0.0	12.02	0.0	Reset Total, Vol = 0.00 bbl				
02/17/2018	20:06:56	89	0.7	12.03	0.0	Start Pumping Spacer				
02/17/2018	20:07:23	271	2.3	11.98	0.7					
02/17/2018	20:08:08	551	4.2	11.89	3.5					
02/17/2018	20:08:53	197	0.0	11.14	6.0					
02/17/2018	20:09:38	77	0.0	10.56	6.0					
02/17/2018	20:10:23	64	0.0	10.56	6.0					
02/17/2018	20:11:08	62	0.0	10.56	6.0					
02/17/2018	20:11:53	60	0.0	10.56	6.0					
02/17/2018	20:12:38	114	0.0	10.57	6.0					
02/17/2018	20:13:23	549	4.2	10.57	7.6					
02/17/2018	20:14:08	325	1.0	10.57	10.0					
02/17/2018	20:14:53	454	1.0	10.08	10.7					
02/17/2018	20:15:38	356	2.3	11.30	12.3					
02/17/2018	20:16:23	544	2.3	11.47	14.0					
02/17/2018	20:17:08	695	4.3	11.13	15.7					
02/17/2018	20:17:53	921	6.6	11.14	20.2					
02/17/2018	20:18:38	905	6.6	11.12	25.1					
02/17/2018	20:19:23	940	6.6	11.06	30.1					
02/17/2018	20:20:08	920	6.5	10.98	35.0					
02/17/2018	20:20:53	873	6.4	10.93	39.8					
02/17/2018	20:21:38	880	6.3	10.94	44.6					
02/17/2018	20:22:23	895	6.6	10.93	49.3					
02/17/2018	20:23:08	878	6.6	11.24	54.3					
02/17/2018	20:23:53	860	6.5	11.11	59.2					
02/17/2018	20:24:38	886	6.6	11.09	63.9					
02/17/2018	20:25:23	912	6.2	10.99	68.8					
02/17/2018	20:26:08	803	6.5	10.90	73.6					
02/17/2018	20:26:53	865	6.6	10.92	78.6					
02/17/2018	20:27:06	380	0.7	11.05	79.9	End Spacer				
02/17/2018	20:27:16	149	0.0	10.93	80.0	Reset Total, Vol = 79.97 bbl				
02/17/2018	20:27:21	110	0.0	10.93	0.0	Drop Bottom Plug				
02/17/2018	20:27:38	-4	0.0	10.93	0.0					
02/17/2018	20:28:23	-35	0.0	11.14	0.0					
02/17/2018	20:29:08	-44	0.0	11.15	0.0					
02/17/2018	20:29:53	-44	0.0	11.16	0.0					
02/17/2018	20:30:38	-45	0.0	9.10	0.0					
02/17/2018	20:31:23	-45	0.0	9.62	0.0					
02/17/2018	20:32:08	-46	0.0	11.09	0.0					
02/17/2018	20:32:53	-47	0.0	12.99	0.0					
02/17/2018	20:33:38	-47	0.0	13.05	0.0					
02/17/2018	20:34:23	-47	0.0	11.18	0.0					
02/17/2018	20:35:08	-47	0.0	11.56	0.0					
02/17/2018	20:35:53	-47	0.0	11.76	0.0					
02/17/2018	20:36:36	38	2.2	12.37	0.1	Start Mixing Lead Slurry				
02/17/2018	20:36:38	66	4.0	12.01	0.1					

Well			Field	Job Start		Customer	Job Number	
Verde 13-2HZ			Wattenberg		Feb/17/2018		ANADARKO PETROLEUM COMPANY (ED	DUNZ-00186
Date	Time 24-hr clock	Treating Pressure PSI	Flow Rate B/M	Density LB/G	Volume BBL	Message		
02/17/2018	20:38:08	598	4.4	11.97	6.7			
02/17/2018	20:38:53	625	4.4	11.78	10.0			
02/17/2018	20:39:38	605	4.4	11.74	13.3			
02/17/2018	20:40:23	611	4.4	11.88	16.6			
02/17/2018	20:41:08	593	4.4	11.81	19.9			
02/17/2018	20:41:53	504	4.5	11.70	23.3			
02/17/2018	20:42:38	554	4.4	12.77	26.6			
02/17/2018	20:43:23	563	4.4	11.76	29.9			
02/17/2018	20:44:08	120	1.9	11.92	32.0			
02/17/2018	20:44:53	106	1.9	11.00	33.4			
02/17/2018	20:45:38	122	1.9	12.23	34.8			
02/17/2018	20:46:23	90	1.9	10.76	36.2			
02/17/2018	20:47:08	587	5.1	11.48	38.9			
02/17/2018	20:47:53	633	5.1	11.52	42.7			
02/17/2018	20:48:38	636	5.1	11.57	46.5			
02/17/2018	20:49:23	620	5.1	11.73	50.3			
02/17/2018	20:50:08	593	5.1	11.62	54.1			
02/17/2018	20:50:53	612	5.1	12.04	58.0			
02/17/2018	20:51:38	56	1.9	11.72	59.9			
02/17/2018	20:52:23	568	5.1	11.70	62.8			
02/17/2018	20:53:08	610	5.1	11.74	66.6			
02/17/2018	20:53:53	652	5.1	11.78	70.4			
02/17/2018	20:54:38	578	5.1	11.79	74.2			
02/17/2018	20:55:23	548	5.1	11.76	78.0			
02/17/2018	20:56:08	559	5.1	11.76	81.9			
02/17/2018	20:56:53	470	5.1	11.78	85.7			
02/17/2018	20:57:38	447	5.1	11.59	89.5			
02/17/2018	20:58:23	447	5.1	11.74	93.3			
02/17/2018	20:59:08	425	5.1	11.76	97.2			
02/17/2018	20:59:53	391	5.1	11.91	101.0			
02/17/2018	21:00:38	432	5.1	11.82	104.8			
02/17/2018	21:01:23	403	5.1	11.82	108.7			
02/17/2018	21:02:08	366	5.1	11.81	112.5			
02/17/2018	21:02:14	400	5.1	11.80	113.0	End Lead Slurry		
02/17/2018	21:02:15	391	5.1	11.80	113.1	Reset Total, Vol = 113.17 bbl		
02/17/2018	21:02:27	442	5.1	11.80	114.1	End CemFit Heal with D600G		
02/17/2018	21:02:53	386	5.1	11.81	116.3			
02/17/2018	21:03:09	-40	0.3	11.96	117.5	340 Sacks @ 12 ppg		
02/17/2018	21:03:17	-45	0.0	12.01	0.0	Yield=1.87 ft3/sx, MF=7.92 gps		
02/17/2018	21:03:23	-45	0.0	10.34	0.0	Mud Balance @ 11.8 ppg		
02/17/2018	21:03:25	-45	0.0	8.81	0.0	Top Of Lead 1765 ft		
02/17/2018	21:03:38	-44	0.0	8.43	0.0			
02/17/2018	21:04:23	-43	0.0	10.08	0.0			
02/17/2018	21:05:08	-43	0.0	12.81	0.0			
02/17/2018	21:05:53	-44	0.0	13.88	0.0			
02/17/2018	21:06:38	-44	0.0	13.24	0.0			
02/17/2018	21:07:23	-44	0.0	13.32	0.0			
02/17/2018	21:07:57	-42	0.3	13.84	0.0	Start Mixing Tail Slurry		
02/17/2018	21:08:08	245	4.0	13.86	0.2			
02/17/2018	21:08:53	363	6.4	13.75	5.0			
02/17/2018	21:09:38	372	6.5	13.56	9.9			
02/17/2018	21:10:23	377	6.5	13.62	14.7			
02/17/2018	21:11:08	366	6.5	13.50	19.5			
02/17/2018	21:11:53	506	6.4	13.53	24.4			

Well Verde 13-2HZ			Field Wattenberg		Job Start Feb/17/2018	Customer ANADARKO PETROLEUM COMPANY (ED	Job Number DUNZ-00186
Date	Time 24-hr clock	Treating Pressure PSI	Flow Rate B/M	Density LB/G	Volume BBL	Message	
02/17/2018	21:13:23	506	6.4	13.76	34.1		
02/17/2018	21:14:08	457	6.4	13.56	38.9		
02/17/2018	21:14:53	473	6.5	13.57	43.7		
02/17/2018	21:15:38	452	6.4	13.53	48.6		
02/17/2018	21:16:23	441	6.5	13.51	53.4		
02/17/2018	21:17:08	419	6.5	13.49	58.2		
02/17/2018	21:17:53	603	7.8	13.50	63.2		
02/17/2018	21:18:38	716	7.8	13.47	69.1		
02/17/2018	21:19:23	743	7.9	13.44	75.0		
02/17/2018	21:20:08	727	7.8	13.42	80.9		
02/17/2018	21:20:53	702	7.9	13.43	86.7		
02/17/2018	21:21:38	676	7.9	13.43	92.6		
02/17/2018	21:22:23	674	7.9	13.42	98.5		
02/17/2018	21:23:08	637	7.8	13.45	104.4		
02/17/2018	21:23:53	621	7.9	13.47	110.3		
02/17/2018	21:24:38	593	7.9	13.36	116.2		
02/17/2018	21:25:23	591	7.9	13.46	122.1		
02/17/2018	21:26:08	536	7.9	13.18	128.0		
02/17/2018	21:26:53	550	7.9	13.42	133.9		
02/17/2018	21:27:38	575	7.9	13.52	139.7		
02/17/2018	21:28:23	538	7.9	13.48	145.6		
02/17/2018	21:29:08	527	7.9	13.45	151.5		
02/17/2018	21:29:53	514	7.9	13.43	157.4		
02/17/2018	21:30:38	514	7.9	13.41	163.3		
02/17/2018	21:31:23	499	7.9	13.40	169.2		
02/17/2018	21:32:08	523	7.9	13.25	175.1		
02/17/2018	21:32:53	516	7.9	13.22	181.0		
02/17/2018	21:33:38	482	7.8	13.58	186.9		
02/17/2018	21:34:23	498	7.9	13.52	192.8		
02/17/2018	21:35:08	516	7.9	13.42	198.7		
02/17/2018	21:35:53	336	6.5	13.32	203.7		
02/17/2018	21:36:38	320	6.4	13.31	208.5		
02/17/2018	21:37:23	315	6.5	13.42	213.3		
02/17/2018	21:38:08	314	6.5	13.44	218.2		
02/17/2018	21:38:53	311	6.5	13.22	223.0		
02/17/2018	21:39:38	323	6.5	13.40	227.9		
02/17/2018	21:40:23	313	6.5	13.33	232.7		
02/17/2018	21:41:08	312	6.5	13.35	237.6		
02/17/2018	21:41:53	298	6.5	13.51	242.5		
02/17/2018	21:42:38	315	6.5	13.31	247.3		
02/17/2018	21:43:23	326	6.5	13.67	252.2		
02/17/2018	21:44:08	327	6.5	13.56	257.0		
02/17/2018	21:44:53	464	7.9	13.55	262.4		
02/17/2018	21:45:38	463	7.9	13.53	268.3		
02/17/2018	21:46:23	604	7.8	13.47	274.2		
02/17/2018	21:47:08	745	7.8	13.40	280.1		
02/17/2018	21:47:53	382	6.5	13.51	285.4		
02/17/2018	21:48:38	332	6.4	13.37	290.2		
02/17/2018	21:49:23	331	6.5	13.65	295.1		
02/17/2018	21:50:08	338	6.5	13.86	299.9		
02/17/2018	21:50:53	355	6.5	13.56	304.8		
02/17/2018	21:51:38	360	6.5	13.48	309.6		
02/17/2018	21:52:23	342	6.5	13.52	314.5		
02/17/2018	21:53:08	346	6.5	13.65	319.3		

Well Verde 13-2HZ			Field Wattenberg		Job Start Feb/17/2018	Customer ANADARKO PETROLEUM COMPANY (ED	Job Number DUNZ-00186
Date	Time 24-hr clock	Treating Pressure PSI	Flow Rate B/M	Density LB/G	Volume BBL	Message	
02/17/2018	21:54:38	557	6.4	13.78	329.0		
02/17/2018	21:55:23	601	6.4	13.72	333.8		
02/17/2018	21:56:08	603	6.4	13.65	338.7		
02/17/2018	21:56:53	563	6.4	13.59	343.5		
02/17/2018	21:57:38	561	6.4	13.56	348.3		
02/17/2018	21:58:23	552	6.4	13.56	353.1		
02/17/2018	21:59:08	542	6.4	13.53	358.0		
02/17/2018	21:59:53	539	6.4	13.52	362.8		
02/17/2018	22:00:38	560	6.5	13.49	367.6		
02/17/2018	22:01:23	557	6.4	13.45	372.5		
02/17/2018	22:02:08	562	6.4	13.40	377.3		
02/17/2018	22:02:53	560	6.4	13.33	382.1		
02/17/2018	22:03:38	562	6.4	13.48	387.0		
02/17/2018	22:04:23	542	6.4	13.51	391.8		
02/17/2018	22:05:08	544	6.4	13.78	396.6		
02/17/2018	22:05:53	547	6.4	13.33	401.5		
02/17/2018	22:06:38	581	6.4	13.69	406.3		
02/17/2018	22:07:06	539	6.4	13.56	409.3	End Tail Slurry	
02/17/2018	22:07:08	609	6.4	13.56	409.5	Reset Total, Vol = 409.58 bbl	
02/17/2018	22:07:22	536	6.4	13.56	411.0	End 50-50 Poz/"G" Slurry	
02/17/2018	22:07:23	538	6.4	13.56	411.1		
02/17/2018	22:07:27	609	6.4	13.56	411.5	Yield=1.66 ft3/sx, MF=7.95 gps	
02/17/2018	22:07:34	556	6.4	13.56	412.3	1390 Sacks @ 13.5 ppg	
02/17/2018	22:07:39	584	6.4	13.56	412.8	Mud Balance @ 13.5 ppg	
02/17/2018	22:07:53	534	6.4	13.56	414.3	Top Of Tail @ 5397 ft	
02/17/2018	22:08:08	-40	0.3	14.08	415.5		
02/17/2018	22:08:53	-41	0.0	13.44	0.1		
02/17/2018	22:09:38	-39	0.0	11.94	0.1		
02/17/2018	22:10:23	-39	0.0	8.98	0.1		
02/17/2018	22:11:08	-38	0.0	9.31	0.1		
02/17/2018	22:11:53	11	1.0	9.31	0.2		
02/17/2018	22:12:38	21	2.7	9.31	1.3		
02/17/2018	22:13:23	35	3.4	9.30	3.4		
02/17/2018	22:14:08	39	3.4	9.30	5.9		
02/17/2018	22:14:53	31	3.4	9.29	8.5		
02/17/2018	22:15:38	60	3.4	9.30	11.1		
02/17/2018	22:16:23	23	3.4	8.42	13.6		
02/17/2018	22:17:08	50	0.0	8.52	16.3		
02/17/2018	22:17:53	32	3.3	8.51	16.3		
02/17/2018	22:18:38	-54	0.0	2.19	0.0		
02/17/2018	22:19:23	-54	0.0	0.34	1.0		
02/17/2018	22:20:08	-54	0.0	0.61	1.0		
02/17/2018	22:20:19	-54	0.0	0.41	1.0	Drop Top Plug	
02/17/2018	22:20:53	-54	0.0	0.28	1.0		
02/17/2018	22:21:38	-51	0.4	0.23	1.0		
02/17/2018	22:21:58	-8	2.9	2.35	0.3	Start Displacement	
02/17/2018	22:22:23	120	6.6	8.44	2.4		
02/17/2018	22:23:08	181	8.0	8.44	7.6		
02/17/2018	22:23:53	171	8.0	8.44	13.6		
02/17/2018	22:24:38	169	8.0	8.44	19.6		
02/17/2018	22:25:23	185	8.0	8.44	25.6		
02/17/2018	22:26:08	169	8.0	8.44	31.6		
02/17/2018	22:26:25	608	7.9	8.44	33.8	Plug Catch on Cement	
02/17/2018	22:26:53	1132	7.9	8.44	37.5		

Well			Field	Job Start		Customer	Job Number
Verde 13-2HZ			Wattenberg	Feb/17/2018		ANADARKO PETROLEUM COMPANY (ED	DUNZ-00186
Date	Time 24-hr clock	Treating Pressure PSI	Flow Rate B/M	Density LB/G	Volume BBL	Message	
02/17/2018	22:28:23	1339	8.0	8.44	49.4		
02/17/2018	22:29:08	1390	8.0	8.44	55.4		
02/17/2018	22:29:53	1430	8.0	8.44	61.4		
02/17/2018	22:30:38	1469	8.0	8.43	67.4		
02/17/2018	22:31:23	1534	8.0	8.43	73.4		
02/17/2018	22:32:08	1614	8.0	8.43	79.4		
02/17/2018	22:32:53	1663	8.0	8.43	85.3		
02/17/2018	22:33:38	1732	7.9	8.43	91.3		
02/17/2018	22:34:23	1802	8.1	8.43	97.3		
02/17/2018	22:35:08	1911	8.0	8.43	103.4		
02/17/2018	22:35:53	1978	8.0	8.43	109.4		
02/17/2018	22:36:38	2053	8.0	8.43	115.4		
02/17/2018	22:37:23	2107	8.0	8.43	121.5		
02/17/2018	22:38:08	2150	8.1	8.43	127.5		
02/17/2018	22:38:53	2216	8.0	8.43	133.5		
02/17/2018	22:39:38	2263	8.0	8.43	139.5		
02/17/2018	22:40:23	2342	8.0	8.43	145.5		
02/17/2018	22:41:08	2408	8.0	8.43	151.5		
02/17/2018	22:41:53	2434	8.0	8.43	157.6		
02/17/2018	22:42:38	2531	8.0	8.43	163.6		
02/17/2018	22:43:23	2593	8.0	8.44	169.6		
02/17/2018	22:44:08	2630	8.0	8.43	175.6		
02/17/2018	22:44:53	2659	8.0	8.44	181.6		
02/17/2018	22:45:38	2679	8.0	8.44	187.5		
02/17/2018	22:46:23	2656	8.0	8.44	193.5		
02/17/2018	22:47:08	2646	8.0	8.44	199.5		
02/17/2018	22:47:53	2659	8.0	8.44	205.5		
02/17/2018	22:48:38	2684	8.0	8.44	211.5		
02/17/2018	22:49:23	2673	7.9	8.44	217.5		
02/17/2018	22:50:08	2691	8.0	8.44	223.5		
02/17/2018	22:50:53	2700	8.0	8.44	229.5		
02/17/2018	22:51:38	2717	8.0	8.44	235.5		
02/17/2018	22:52:23	2721	8.0	8.45	241.5		
02/17/2018	22:53:08	2727	8.0	8.45	247.5		
02/17/2018	22:53:53	2753	8.0	8.45	253.5		
02/17/2018	22:54:38	2748	8.0	8.45	259.4		
02/17/2018	22:55:23	2771	7.9	8.45	265.4		
02/17/2018	22:56:08	2789	8.0	8.45	271.4		
02/17/2018	22:56:53	2790	8.0	8.45	277.4		
02/17/2018	22:57:38	2812	8.0	8.46	283.4		
02/17/2018	22:58:23	2826	8.0	8.46	289.4		
02/17/2018	22:59:08	2851	8.0	8.46	295.4		
02/17/2018	22:59:53	2867	7.9	8.46	301.4		
02/17/2018	23:00:38	2873	7.9	8.46	307.3		
02/17/2018	23:01:23	2885	8.0	8.46	313.3		
02/17/2018	23:02:08	2899	8.0	8.46	319.3		
02/17/2018	23:02:53	2930	7.9	8.46	325.3		
02/17/2018	23:03:38	2963	8.0	8.46	331.3		
02/17/2018	23:04:23	2959	8.0	8.47	337.2		
02/17/2018	23:05:08	2998	7.9	8.47	343.2		
02/17/2018	23:05:53	3022	8.0	8.47	349.2		
02/17/2018	23:06:38	3008	7.9	8.47	355.2		
02/17/2018	23:07:23	3056	8.0	8.47	361.1		
02/17/2018	23:08:08	3081	8.0	8.47	367.1		

Well			Field	Job Start		Customer	Job Number
Verde 13-2HZ			Wattenberg	Feb/17/2018		ANADARKO PETROLEUM COMPANY (ED	DUNZ-00186
Date	Time 24-hr clock	Treating Pressure PSI	Flow Rate B/M	Density LB/G	Volume BBL	Message	
02/17/2018	23:09:38	3121	8.0	8.47	379.0		
02/17/2018	23:10:23	3109	8.0	8.47	385.0		
02/17/2018	23:11:08	3155	7.9	8.47	390.9		
02/17/2018	23:11:53	3180	8.0	8.47	396.9		
02/17/2018	23:12:38	3204	8.0	8.47	402.8		
02/17/2018	23:13:23	2611	5.0	8.47	407.1		
02/17/2018	23:13:46	2582	5.0	8.47	409.0	Spacer to Surface 35 bbls	
02/17/2018	23:14:08	2619	5.0	8.47	410.8		
02/17/2018	23:14:28	2581	5.0	8.47	412.5	Sapcer @ Surface after 400 bbl displacement	
02/17/2018	23:14:53	2556	5.0	8.48	414.6		
02/17/2018	23:15:38	2657	5.0	8.48	418.3		
02/17/2018	23:16:23	2628	5.0	8.48	422.1		
02/17/2018	23:17:08	2667	5.0	8.46	425.8		
02/17/2018	23:17:53	2255	3.0	8.47	428.2		
02/17/2018	23:18:38	2346	3.0	8.47	430.4		
02/17/2018	23:19:23	2315	3.0	8.47	432.7		
02/17/2018	23:20:08	2317	3.0	8.47	434.9		
02/17/2018	23:20:53	2535	3.0	8.47	437.2		
02/17/2018	23:21:11	2968	0.0	2.90	437.9	Bump Top Plug	
02/17/2018	23:21:16	2926	0.0	0.10	437.9	End Displacement	
02/17/2018	23:21:28	2974	0.0	0.03	0.0	Reset Total, Vol = 436.04 bbl	
02/17/2018	23:21:38	2998	0.0	0.02	0.0		
02/17/2018	23:22:23	2982	0.0	0.01	0.0		
02/17/2018	23:23:08	2992	0.0	0.01	0.0		
02/17/2018	23:23:53	3015	0.0	0.01	0.0		
02/17/2018	23:23:54	3012	0.0	0.01	0.0	Pressure Test Casing	
02/17/2018	23:24:38	3039	0.0	0.01	0.0		
02/17/2018	23:25:23	3060	0.0	0.01	0.0		
02/17/2018	23:26:08	3072	0.0	0.02	0.0		
02/17/2018	23:26:53	3087	0.0	0.02	0.0		
02/17/2018	23:27:38	3104	0.0	0.02	0.0		
02/17/2018	23:28:23	3120	0.0	0.02	0.0		
02/17/2018	23:29:08	3135	0.0	0.02	0.0		
02/17/2018	23:29:53	3149	0.0	0.02	0.0		
02/17/2018	23:30:38	3162	0.0	0.03	0.0		
02/17/2018	23:31:23	3176	0.0	0.03	0.0		
02/17/2018	23:32:08	3190	0.0	0.03	0.0		
02/17/2018	23:33:38	3216	0.0	0.03	0.0		
02/17/2018	23:34:23	3229	0.0	0.03	0.0		
02/17/2018	23:35:08	3241	0.0	0.03	0.0		
02/17/2018	23:35:53	3255	0.0	6.75	0.0		
02/17/2018	23:36:38	3267	0.0	8.44	0.0		
02/17/2018	23:37:23	2796	0.0	8.44	0.0		
02/17/2018	23:38:04	660	0.0	8.44	0.0	Bleed Off. Check Float	
02/17/2018	23:38:08	413	0.0	8.44	0.0		
02/17/2018	23:38:21	39	0.0	8.44	0.0	Float Holding. 5 bbl back	
02/17/2018	23:38:53	-54	0.0	8.44	0.0		
02/17/2018	23:39:38	-54	0.0	8.44	0.0		
02/17/2018	23:40:23	-37	0.0	8.43	0.0		
02/17/2018	23:41:08	801	4.0	8.44	1.1		
02/17/2018	23:41:23	1469	4.0	8.44	2.1	Perform Wet Shoe	
02/17/2018	23:41:53	2878	3.9	8.44	4.1		
02/17/2018	23:42:28	3276	3.9	8.44	6.4	Open @ 4200 psi	
02/17/2018	23:42:38	2589	3.9	8.44	7.0		

Well			Field		Job Start		Customer		Job Number	
Verde 13-2HZ			Wattenberg		Feb/17/2018		ANADARKO PETROLEUM COMPANY (ED		DUNZ-00186	
Date	Time 24-hr clock	Treating Pressure PSI		Flow Rate B/M	Density LB/G	Volume BBL		Message		
02/17/2018	23:43:41	1959		0.0	8.44	9.2		Pump 3bbls		
02/17/2018	23:43:54	1647		0.0	8.43	9.2		Bl;eed Off		
02/17/2018	23:44:08	952		0.0	8.43	9.2				
02/17/2018	23:44:53	-55		0.0	8.44	9.2				
02/17/2018	23:45:38	-54		0.0	8.44	9.2				

Post Job Summary

Average Pump Rates, bbl/min					Volume of Fluid Injected, bbl							
Slurry 6.2	N2	Mud	Maximum Rate 13.0		Total Slurry 522.8	Mud 0.0	Spacer 79.9	N2				
Treating Pressure Summary, psi					Breakdown Fluid							
Maximum 5227	Final 3296	Average 1294	Bump Plug to 3100	Breakdown	Type	Volume bbl	Density lb/gal					
Avg. N2 Percent %	Designed Slurry Volume 520.7 bbl	Displacement 436.0 bbl	Mix Water Temp 60 degF	Cement Circulated to Surface?		<input checked="" type="checkbox"/>	Volume bbl					
				Washed Thru Perfs		<input type="checkbox"/>	To ft					
Customer or Authorized Representative Ruben Hernandez / Jason Laub			Schlumberger Supervisor Wence Luste			Circulation Lost <input type="checkbox"/>	Job Completed <input checked="" type="checkbox"/>					
						-	-					