

# HALLIBURTON

iCem<sup>®</sup> Service

## **TERRA ENERGY PARTNERS-EBUS**

**For: KARL SCHNEIDER / CRAIG BORGSTEDE**

Date: Tuesday, February 13, 2018

**PA 414-24 Surface**

API# 05-045-23653

Sincerely,

**Grand Junction Cement Engineering**

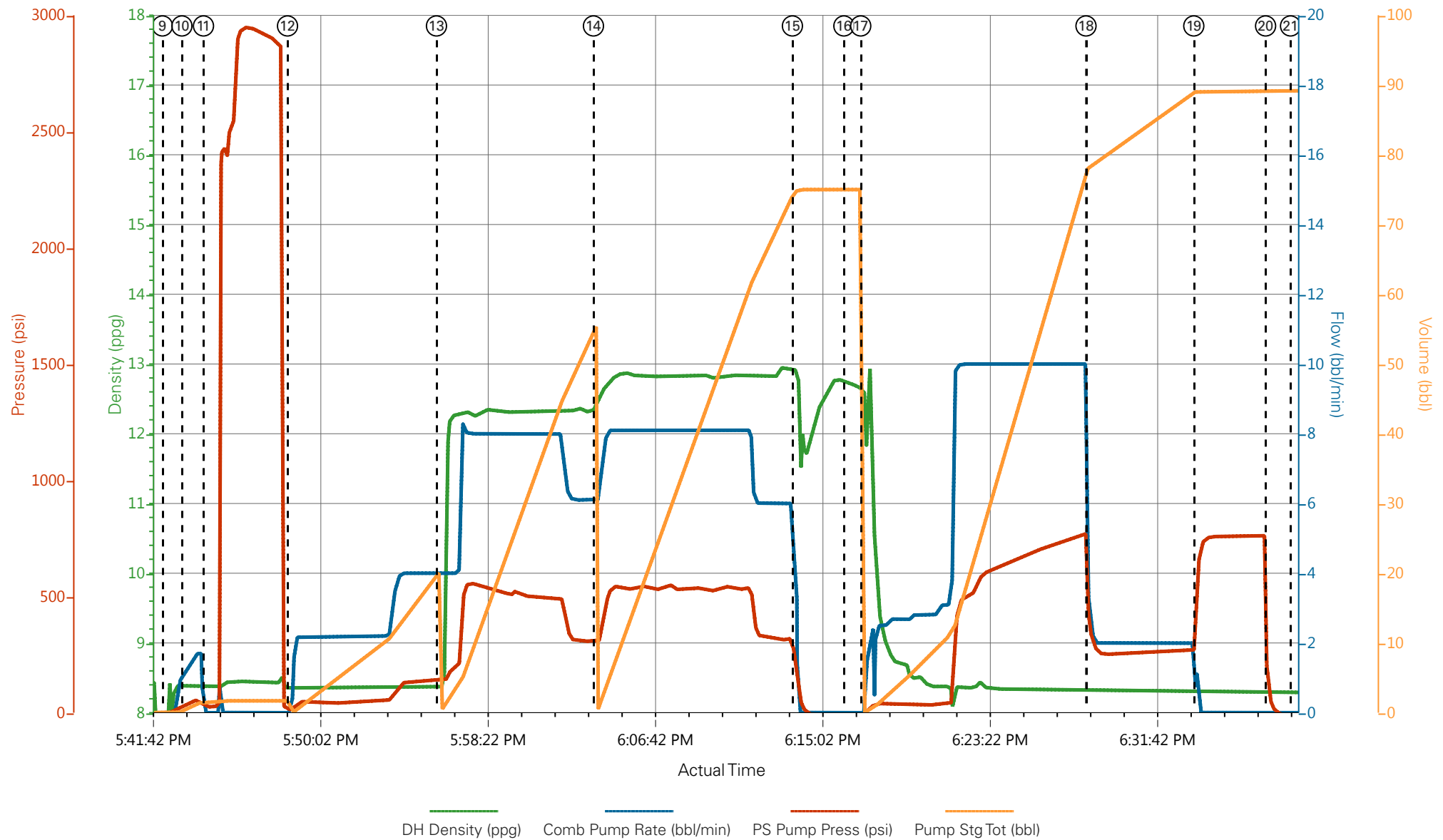
## 2.0 Real-Time Job Summary

## 2.1 Job Event Log

Type	Seq. No.	Graph Label	Date	Time	Source	DH Density (ppg)	Comb Pump Rate (bbl/min)	PS Pump Press (psi)	Pump Stg Tot (bbl)	Comments
Event	1	Call Out	02/13/2018	10:00:00	USER					REQUESTED ON LOCATION TIME 1600
Event	2	Pre-Convoy Safety Meeting	02/13/2018	12:00:00	USER					ALL HES EMPLOYEES
Event	3	Arrive At Loc	02/13/2018	13:30:00	USER					ARRIVED ON LOCATION 2 1/2 HOURS EARLY, RIG PULLING DRILL PIPE
Event	4	Meet With Company Rep	02/13/2018	13:45:00	USER					COMPANY REP OFFERED SDS / WATER TEST
Event	5	Assessment Of Location Safety Meeting	02/13/2018	14:00:00	USER					ALL HES EMPLOYEES
Event	6	Pre-Rig Up Safety Meeting	02/13/2018	14:20:00	USER					ALL HES EMPLOYEES
Event	7	Rig-Up Equipment	02/13/2018	14:30:00	USER					1 HT-400 PUMP TRUCK (ELITE #4) 1 660 BULK TRUCK 1 F-550 PICKUP
Event	8	Pre-Job Safety Meeting	02/13/2018	17:25:00	USER					ALL HES EMPLOYEES AND RIG CREW, RIG CIRCULATED @ 451 GPM @ 270 PSI PRIOR TO THE JOB
Event	9	Start Job	02/13/2018	17:42:19	COM4					TD:1141 TP: 1135.24 SJ: 46.34 CSG: 9 5/8 32.3# H-40 OH: 13 1/2 MUD WT: 9.3 PPG
Event	10	Prime Lines	02/13/2018	17:43:18	USER	8.33	2.0	70	2.0	PRIME LINES WITH 28BLS FRESH WATER
Event	11	Test Lines	02/13/2018	17:44:22	COM4	8.33	0.0	2985	2.0	PRESSURE TEST OK
Event	12	Pump Fresh Water Spacer	02/13/2018	17:48:33	COM4	8.33	4.0	135	20	PUMP 20 BBL FRESH WATER SPACER
Event	13	Pump Lead Cement	02/13/2018	17:55:58	COM4	12.3	8.0	500	53	125 SKS 12.3 PPG 2.38 YIELD 13.77 GAL/SK LEAD CEMENT WEIGHT VERIFIED VIA PRESSURIZED MUD SCALES
Event	14	Pump Tail Cement	02/13/2018	18:03:47	COM4	12.8	8.0	490	65.8	175 SKS 12.8 PPG 2.11 YIELD 11.78 GAL/SK TAIL

										CEMENT WEIGHT VERIFIED VIA PRESSURIZED MUD SCALES
Event	15	Shutdown	02/13/2018	18:13:41	USER					SHUTDOWN TO DROP TOP PLUG
Event	16	Drop Top Plug	02/13/2018	18:16:15	COM4					PLUG AWAY NO PROBLEMS, WASHE UP ON TOP OF THE PLUG
Event	17	Pump Displacement	02/13/2018	18:17:05	COM4	8.33	10.0	700	85.6	FRESH WATER DISPLACEMENT
Event	18	Slow Rate	02/13/2018	18:28:18	USER	8.33	2.0	260	75	SLOW RATE TO BUMP PLUG
Event	19	Bump Plug	02/13/2018	18:33:40	COM4	8.33	2.0	754	85.6	PSI BEFORE BUMPING PLUG @ 260, BUMPED PLUG UP TO 754 PSI
Event	20	Check Floats	02/13/2018	18:37:15	COM4					FLOATS HELD, 1/2 BBL BACK TO DISPLACEMENT TANKS
Event	21	End Job	02/13/2018	18:38:30	COM4					GOOD RETURNS THROUGHOUT JOB, PIPE STATIC THROUGHOUT JOB, 35 BBLS OF CEMENT TO SURFACE
Event	22	Pre-Rig Down Safety Meeting	02/13/2018	18:45:00	USER					ALL HES EMPLOYEES
Event	23	Rig-Down Equipment	02/13/2018	18:50:00	USER					
Event	24	Pre-Convoy Safety Meeting	02/13/2018	19:50:00	USER					ALL HES EMPLOYEES
Event	25	Crew Leave Location	02/13/2018	20:00:00	USER					THANK YOU FOR USING HALLIBURTON CEMENT, DUSTIN SMITH AND CREW

## TEP - PA 414-24 - 9 5/8 SURFACE



- |                                         |                             |                           |                     |                                |
|-----------------------------------------|-----------------------------|---------------------------|---------------------|--------------------------------|
| ① Call Out                              | ⑥ Pre-Rig Up Safety Meeting | ⑪ Test Lines              | ⑮ DropTop Plug      | 21 End Job                     |
| ② Pre-Convoy Safety Meeting             | ⑦ Rig-Up Equipment          | ⑫ Pump Fresh Water Spacer | ⑯ Pump Displacement | 22 Pre-Rig Down Safety Meeting |
| ③ Arrive At Loc                         | ⑧ Pre-Job Safety Meeting    | ⑬ Pump Lead Cement        | ⑰ Slow Rate         | 23 Rig-Down Equipment          |
| ④ Meet With Company Rep                 | ⑨ Start Job                 | ⑭ Pump Tail Cement        | ⑱ Bump Plug         | 24 Pre-Convoy Safety Meeting   |
| ⑤ Assessment Of Location Safety Meeting | ⑩ Prime Lines               | ⑮ Shutdown                | 20 Check Floats     | 25 Crew Leave Location         |

▼ **HALLIBURTON** | iCem® Service

Created: 2018-02-13 10:05:48, Version: 4.2.393

Edit

Customer : TERRA ENERGY PARTNERS-EBUS

Job Date : 2/13/2018 4:11:08 PM

Well : PA 414-24

Representative : KARL SCHNEIDER

Sales Order # : 0904636052

ELITE # 1 : DUSTIN SMITH / JAMES LEIST

# TEP - PA 414-24 - 9 5/8 SURFACE

