



May 1, 2018

Colorado Oil and Gas Conservation Commission  
1120 Lincoln Street, Suite 801  
Denver, CO 80203

**RE: Proposed Drilling and Spacing Unit**  
Seltzer LD 21-031HC  
Codell New Drill  
NWNE Sec. 4, Township 1S, and Range 67W  
Adams County, Colorado

Dear Director,

Great Western Operating Company, LLC (Great Western) is planning to drill the above captioned well in accordance with the provisions of Colorado Oil and Gas Conservation Commission (COGCC) Rule 318A.e.

Great Western's Proposed Drilling and Spacing Unit:

Township 1S, Range 67W (Adams County): Section 4: E2W2, W2E2  
Section 9: E2W2, W2E2  
Section 16: E2W2, W2E2  
Section 21: NENW, NWNE

**Total Acres: 1040 ac**

The 30 day notification time period has passed and we have not yet received any objections to such well locations or proposed spacing unit, therefore Great Western hereby requests the Director to approve the above mentioned well. Great Western respectfully requests the COGCC review the enclosed map illustrating the Proposed Drilling and Spacing Unit.

Respectfully,

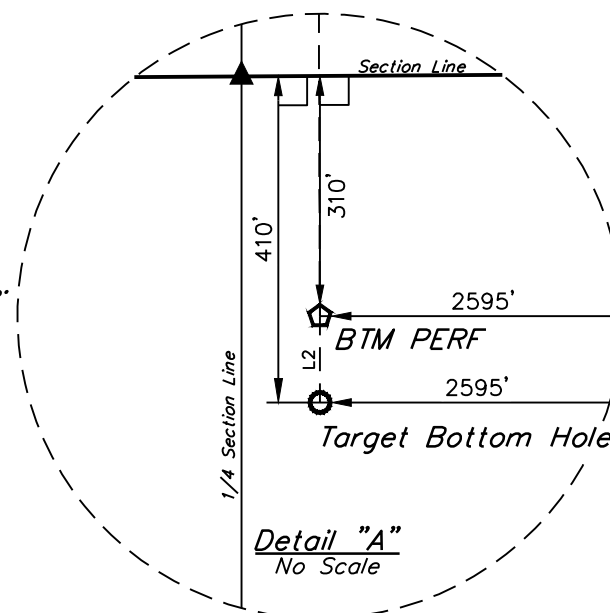
Natalie Svendsen  
Regulatory Analyst  
Great Western Operating Company, LLC

- L = 90° SYMBOL  
 ● = PROPOSED WELLHEAD.  
 ○ = TARGET BOTTOM HOLE.  
 ◆ = ENTRY POINT.  
 ☆ = BTM PERF.  
 ▲ = SECTION CORNERS LOCATED. (NAD 83)  
 △ = SECTION CORNERS RE-ESTABLISHED.  
 (Not Set on Ground.) (NAD 83)

*T1S, R67W, 6th P.M.*

LINE TABLE		
LINE	DIRECTION	LENGTH
L1	N85°36'15"W	355.49'
L2	S00°06'17"E	100.00'

SPACING UNIT DESCRIPTION  
SEC 4: E2W2, W2E2  
SEC 9: E2W2, W2E2  
SEC 16: E2W2, W2E2  
SEC 21: NE4NW4, NW4NE4  
UNIT ACREAGE: 1040



CERTIFICATE

THIS IS TO CERTIFY THAT THE ABOVE MAP WAS PREPARED FROM FIELD NOTES OF ACTUAL SURVEYS MADE BY ME OR UNDER MY SUPERVISION, AND THAT THE SAME ARE TRUE AND CORRECT TO THE BEST OF MY KNOWLEDGE AND BELIEF.

REGISTERED LAND SURVEYOR  
REGISTRATION NO. 28285  
STATE OF COLORADO

REV: 3 04-20-18 K.M.R. (SL MOVE)

## GREAT WESTERN OPERATING COMPANY

**SELTZER LD 21-031HC**  
**NW 1/4 NE 1/4, SECTION 4, T1S, R67W, 6th P.M.**

<b>SURVEYED BY</b>	JAMES FRESHWATER, N.W.	04-19-18	<b>SCALE</b>
<b>DRAWN BY</b>	K.B.	12-30-16	1" = 1000'

### BASIS OF BEARINGS

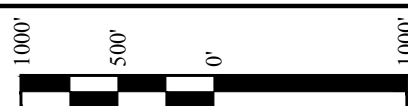
### BASIS OF ELEVATION

BENCHMARK JR 53 5026 LOCATED IN THE SW 1/4 SE 1/4 OF SECTION 18, T1N, R68W, 6th P.M., TAKEN FROM 1988 PUBLISHED DATUM BY THE UNITED STATES DEPARTMENT OF THE INTERIOR. GEOLOGICAL SURVEY AS BEING 5028 FEET.

**UELS, LLC**

Corporate Office \* 85 South 200 East  
Vernal, UT 84078 \* (435) 789-1017

**PDOP = 1.4**



NAD 83 (SURFACE LOCATION)	NAD 83 (ENTRY POINT)	NAD 83 (BTM PERF)	NAD 83 (TARGET BOTTOM HOLE)
LATITUDE = 39°59'56.32" (39.998900)	LATITUDE = 39°59'56.64" (39.999067)	LATITUDE = 39°57'24.30" (39.956750)	LATITUDE = 39°57'23.31" (39.956475)
LONGITUDE = 104°53'53.72" (104.892422)	LONGITUDE = 104°53'53.27" (104.893686)	LONGITUDE = 104°53'36.87" (104.893575)	LONGITUDE = 104°53'36.87" (104.893575)
NAD 27 (SURFACE LOCATION)	NAD 27 (ENTRY POINT)	NAD 27 (BTM PERF)	NAD 27 (TARGET BOTTOM HOLE)
LATITUDE = 39°59'56.42" (39.999006)	LATITUDE = 39°59'56.70" (39.999083)	LATITUDE = 39°57'24.35" (39.956764)	LATITUDE = 39°57'23.77" (39.956492)
LONGITUDE = 104°53'30.81" (104.891891)	LONGITUDE = 104°53'35.36" (104.893156)	LONGITUDE = 104°53'34.96" (104.893044)	LONGITUDE = 104°53'34.96" (104.893044)