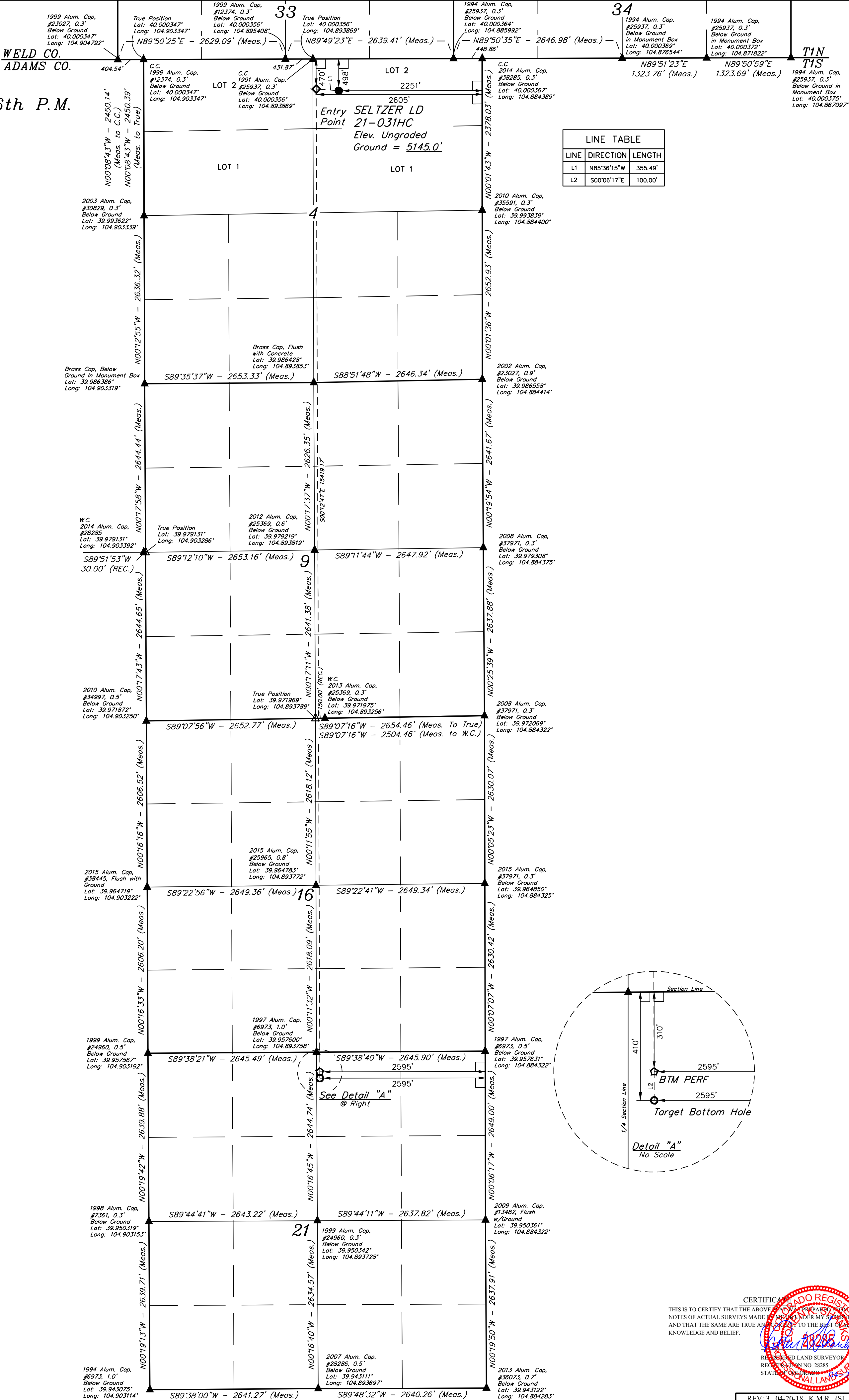


LEGEND:

- 90° SYMBOL
- PROPOSED WELLHEAD.
- TARGET BOTTOM HOLE.
- ENTRY POINT.
- BTM PERF.
- SECTION CORNERS LOCATED. (NAD 83)
- SECTION CORNERS RE-ESTABLISHED. (Not Set on Ground.) (NAD 83)

T1S, R67W, 6th P.M.



BASIS OF BEARINGS
BASIS OF BEARINGS IS A G.P.S. OBSERVATION
BASIS OF ELEVATION
BENCHMARK JR 53 5026 LOCATED IN THE SW 1/4 SE 1/4 OF SECTION 18, T1N, R68W, 6th P.M., TAKEN FROM 1988 PUBLISHED DATUM BY THE UNITED STATES DEPARTMENT OF THE INTERIOR, GEOLOGICAL SURVEY AS BEING 5028 FEET.

UELTS, LLC
Corporate Office * 85 South 200 East
Vernal, UT 84078 * (435) 789-1017

UINTAH
ENGINEERING & LAND SURVEYING

PDOP = 1.4			
NAD 83 (SURFACE LOCATION) LATITUDE = 39°59'56.36" (39.998990) LONGITUDE = 104°53'32.72" (104.892422)	NAD 83 (ENTRY POINT) LATITUDE = 39°59'56.64" (39.999067) LONGITUDE = 104°53'37.27" (104.893686)	NAD 83 (BTM PERF) LATITUDE = 39°57'24.30" (39.956750) LONGITUDE = 104°53'36.87" (104.893575)	NAD 83 (TARGET BOTTOM HOLE) LATITUDE = 39°57'23.31" (39.956475) LONGITUDE = 104°53'36.87" (104.893575)
NAD 27 (SURFACE LOCATION) LATITUDE = 39°59'56.42" (39.999006) LONGITUDE = 104°53'30.81" (104.891891)	NAD 27 (ENTRY POINT) LATITUDE = 39°59'56.70" (39.999083) LONGITUDE = 104°53'35.36" (104.893156)	NAD 27 (BTM PERF) LATITUDE = 39°57'24.35" (39.956764) LONGITUDE = 104°53'34.96" (104.893044)	NAD 27 (TARGET BOTTOM HOLE) LATITUDE = 39°57'23.37" (39.956492) LONGITUDE = 104°53'34.96" (104.893044)

GREAT WESTERN OPERATING COMPANY

SELTZER LD 21-031HC
NW 1/4 NE 1/4, SECTION 4, T1S, R67W, 6th P.M.
ADAMS COUNTY, COLORADO

SURVEYED BY	JAMES FRESHWATER, N.W.	04-19-18	SCALE
DRAWN BY	K.B.	12-30-16	1" = 1000'

WELL LOCATION PLAT