



Well: Middlepark 18-19-1L  
 Site: Section 18-T04N-R62W  
 Project: Weld County, Colorado  
 Wellbore: Original Hole  
 Design: plan2

#### Section Details

Sec	MD	Inc	Azi	TVD	+N/-S	+E/-W	Dleg	Vsect	Annotation
1	0.00	0.00	0.00	0.00	0.00	0.00	0.00	0.00	
2	2000.00	0.00	0.00	2000.00	0.00	0.00	0.00	0.00	KOP Begin 1°/100' build
3	2592.61	11.85	239.81	2588.40	-30.71	-52.79	2.00	-26.47	Begin 11.85° tangent
4	5671.59	11.85	239.81	5601.73	-348.70	-599.42	0.00	-300.51	Begin 10°/100' build
5	6630.22	90.00	359.63	6223.00	220.52	-716.17	10.00	276.13	LP Begin 90° lateral
6	16275.45	90.00	359.63	6223.00	9865.56	-777.84	0.00	9896.17	PBHL/TD 16275.40 MD/6223.00 TVD

#### DESIGN TARGET DETAILS

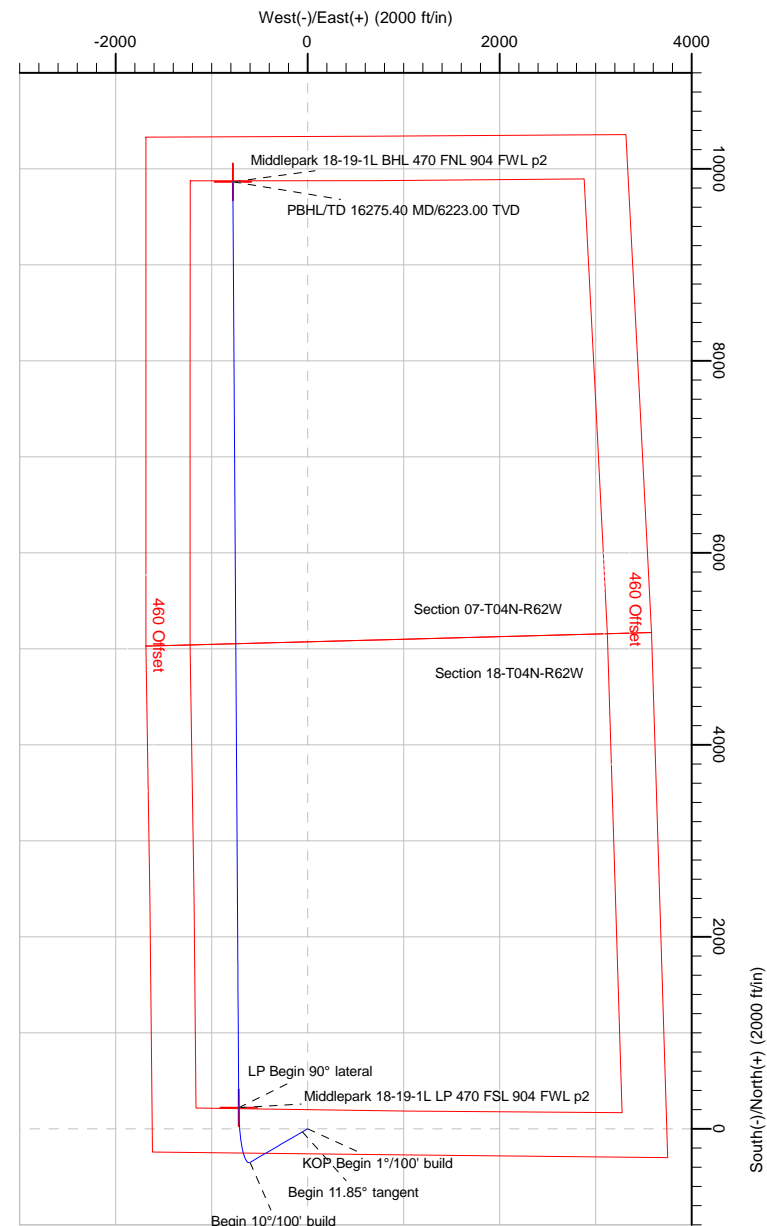
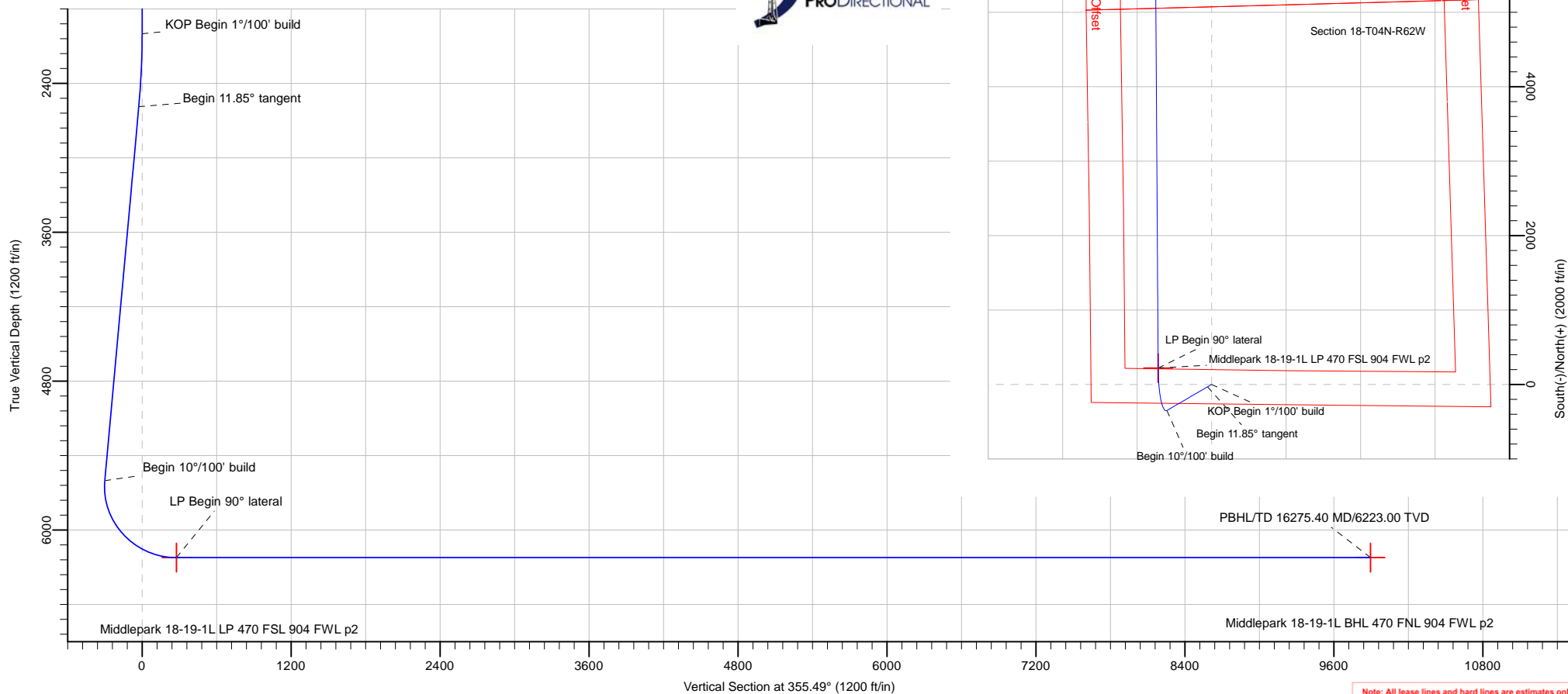
Name	TVD	+N/-S	+E/-W	Northing	Easting	Latitude	Longitude
Middlepark 18-19-1L BHL 470 FNL 904 FWL p2	6223.00	9865.56	-777.84	14648607.57	1815004.16	40.33298373	-104.37353514
Middlepark 18-19-1L LP 470 FSL 904 FWL p2	6223.00	220.52	-716.17	14638963.24	1815134.35	40.30649906	-104.37331293



Azimuths to True North  
 Magnetic North: 8.18°

Magnetic Field  
 Strength: 52247.4snT  
 Dip Angle: 66.90°  
 Date: 4/22/2018  
 Model: HDGM

Middlepark 18-19-1L Surf loc: 261 FSL 1618 FWL Section 18-T04N-R62W			
NAD83 Colorado - HARN Universal Transverse Mercator (US Survey Feet) Zone 13N (108 W to 102 W) RKB=4558+24 @ 4582.00ft			
Northing	Easting	Latitude	Longitude
14638747.81	1815852.07	40.30589354	-104.37074421



Note: All lease lines and hard lines are estimates only and are subject to customers approval.

<b>Database:</b>	DB_Jul2216dt_v14	<b>Local Co-ordinate Reference:</b>	Well Middlepark 18-19-1L
<b>Company:</b>	Confluence Resources	<b>TVD Reference:</b>	RKB=4558+24 @ 4582.00ft
<b>Project:</b>	Weld County, Colorado	<b>MD Reference:</b>	RKB=4558+24 @ 4582.00ft
<b>Site:</b>	Section 18-T04N-R62W	<b>North Reference:</b>	True
<b>Well:</b>	Middlepark 18-19-1L	<b>Survey Calculation Method:</b>	Minimum Curvature
<b>Wellbore:</b>	Original Hole		
<b>Design:</b>	plan2		

<b>Project</b>	Weld County, Colorado		
<b>Map System:</b>	Universal Transverse Mercator (US Survey Feet)	<b>System Datum:</b>	Mean Sea Level
<b>Geo Datum:</b>	NAD83 Colorado - HARN		
<b>Map Zone:</b>	Zone 13N (108 W to 102 W)		

<b>Site</b>	Section 18-T04N-R62W			
<b>Site Position:</b>		<b>Northing:</b>	14,641,153.41 usft	<b>Latitude:</b> 40.31252000
<b>From:</b>	Lat/Long	<b>Easting:</b>	1,814,773.97 usft	<b>Longitude:</b> -104.37455000
<b>Position Uncertainty:</b>	0.00 ft	<b>Slot Radius:</b>	13-3/16 "	<b>Grid Convergence:</b> 0.40 °

<b>Well</b>	Middlepark 18-19-1L, Surf loc: 261 FSL 1618 FWL Section 18-T04N-R62W			
<b>Well Position</b>	<b>+N/-S</b>	-2,413.16 ft	<b>Northing:</b>	14,638,747.81 usft
	<b>+E/-W</b>	1,061.08 ft	<b>Easting:</b>	1,815,852.07 usft
<b>Position Uncertainty</b>		0.00 ft	<b>Wellhead Elevation:</b>	<b>Ground Level:</b> 4,558.00 ft

<b>Wellbore</b>	Original Hole				
<b>Magnetics</b>	<b>Model Name</b>	<b>Sample Date</b>	<b>Declination (°)</b>	<b>Dip Angle (°)</b>	<b>Field Strength (nT)</b>
	HDGM	4/22/2018	8.18	66.90	52,247.40000000

<b>Design</b>	plan2			
<b>Audit Notes:</b>				
<b>Version:</b>	<b>Phase:</b>	PLAN	<b>Tie On Depth:</b>	0.00
<b>Vertical Section:</b>	<b>Depth From (TVD) (ft)</b>	<b>+N/-S (ft)</b>	<b>+E/-W (ft)</b>	<b>Direction (°)</b>
	0.00	0.00	0.00	355.49

<b>Plan Survey Tool Program</b>	<b>Date</b>	4/27/2018		
<b>Depth From (ft)</b>	<b>Depth To (ft)</b>	<b>Survey (Wellbore)</b>	<b>Tool Name</b>	<b>Remarks</b>
1	0.00	16,275.45	plan2 (Original Hole)	

<b>Plan Sections</b>										
<b>Measured Depth (ft)</b>	<b>Inclination (°)</b>	<b>Azimuth (°)</b>	<b>Vertical Depth (ft)</b>	<b>+N/-S (ft)</b>	<b>+E/-W (ft)</b>	<b>Dogleg Rate (°/100ft)</b>	<b>Build Rate (°/100ft)</b>	<b>Turn Rate (°/100ft)</b>	<b>TFO (°)</b>	<b>Target</b>
0.00	0.00	0.00	0.00	0.00	0.00	0.00	0.00	0.00	0.00	
2,000.00	0.00	0.00	2,000.00	0.00	0.00	0.00	0.00	0.00	0.00	
2,592.61	11.85	239.81	2,588.40	-30.71	-52.79	2.00	2.00	0.00	239.81	
5,671.59	11.85	239.81	5,601.73	-348.70	-599.42	0.00	0.00	0.00	0.00	
6,630.22	90.00	359.63	6,223.00	220.52	-716.17	10.00	8.15	12.50	119.29	Middlepark 18-19-1L I
16,275.45	90.00	359.63	6,223.00	9,865.56	-777.84	0.00	0.00	0.00	0.00	Middlepark 18-19-1L I

<b>Database:</b>	DB_Jul2216dt_v14	<b>Local Co-ordinate Reference:</b>	Well Middlepark 18-19-1L
<b>Company:</b>	Confluence Resources	<b>TVD Reference:</b>	RKB=4558+24 @ 4582.00ft
<b>Project:</b>	Weld County, Colorado	<b>MD Reference:</b>	RKB=4558+24 @ 4582.00ft
<b>Site:</b>	Section 18-T04N-R62W	<b>North Reference:</b>	True
<b>Well:</b>	Middlepark 18-19-1L	<b>Survey Calculation Method:</b>	Minimum Curvature
<b>Wellbore:</b>	Original Hole		
<b>Design:</b>	plan2		

Planned Survey									
Measured Depth (ft)	Inclination (°)	Azimuth (°)	Vertical Depth (ft)	+N/-S (ft)	+E/-W (ft)	Vertical Section (ft)	Dogleg Rate (°/100ft)	Build Rate (°/100ft)	Turn Rate (°/100ft)
0.00	0.00	0.00	0.00	0.00	0.00	0.00	0.00	0.00	0.00
100.00	0.00	0.00	100.00	0.00	0.00	0.00	0.00	0.00	0.00
200.00	0.00	0.00	200.00	0.00	0.00	0.00	0.00	0.00	0.00
300.00	0.00	0.00	300.00	0.00	0.00	0.00	0.00	0.00	0.00
400.00	0.00	0.00	400.00	0.00	0.00	0.00	0.00	0.00	0.00
500.00	0.00	0.00	500.00	0.00	0.00	0.00	0.00	0.00	0.00
600.00	0.00	0.00	600.00	0.00	0.00	0.00	0.00	0.00	0.00
700.00	0.00	0.00	700.00	0.00	0.00	0.00	0.00	0.00	0.00
800.00	0.00	0.00	800.00	0.00	0.00	0.00	0.00	0.00	0.00
900.00	0.00	0.00	900.00	0.00	0.00	0.00	0.00	0.00	0.00
1,000.00	0.00	0.00	1,000.00	0.00	0.00	0.00	0.00	0.00	0.00
1,100.00	0.00	0.00	1,100.00	0.00	0.00	0.00	0.00	0.00	0.00
1,200.00	0.00	0.00	1,200.00	0.00	0.00	0.00	0.00	0.00	0.00
1,300.00	0.00	0.00	1,300.00	0.00	0.00	0.00	0.00	0.00	0.00
1,400.00	0.00	0.00	1,400.00	0.00	0.00	0.00	0.00	0.00	0.00
1,500.00	0.00	0.00	1,500.00	0.00	0.00	0.00	0.00	0.00	0.00
1,600.00	0.00	0.00	1,600.00	0.00	0.00	0.00	0.00	0.00	0.00
1,700.00	0.00	0.00	1,700.00	0.00	0.00	0.00	0.00	0.00	0.00
1,800.00	0.00	0.00	1,800.00	0.00	0.00	0.00	0.00	0.00	0.00
1,900.00	0.00	0.00	1,900.00	0.00	0.00	0.00	0.00	0.00	0.00
2,000.00	0.00	0.00	2,000.00	0.00	0.00	0.00	0.00	0.00	0.00
<b>KOP Begin 1°/100' build</b>									
2,100.00	2.00	239.81	2,099.98	-0.88	-1.51	-0.76	2.00	2.00	0.00
2,200.00	4.00	239.81	2,199.84	-3.51	-6.03	-3.02	2.00	2.00	0.00
2,300.00	6.00	239.81	2,299.45	-7.89	-13.57	-6.80	2.00	2.00	0.00
2,400.00	8.00	239.81	2,398.70	-14.02	-24.10	-12.08	2.00	2.00	0.00
2,500.00	10.00	239.81	2,497.47	-21.88	-37.62	-18.86	2.00	2.00	0.00
2,592.61	11.85	239.81	2,588.39	-30.71	-52.79	-26.47	2.00	2.00	0.00
<b>Begin 11.85° tangent</b>									
2,600.00	11.85	239.81	2,595.63	-31.47	-54.10	-27.12	0.00	0.00	0.00
2,700.00	11.85	239.81	2,693.49	-41.80	-71.86	-36.02	0.00	0.00	0.00
2,800.00	11.85	239.81	2,791.36	-52.13	-89.61	-44.93	0.00	0.00	0.00
2,900.00	11.85	239.81	2,889.23	-62.46	-107.36	-53.83	0.00	0.00	0.00
3,000.00	11.85	239.81	2,987.10	-72.79	-125.12	-62.73	0.00	0.00	0.00
3,100.00	11.85	239.81	3,084.97	-83.11	-142.87	-71.63	0.00	0.00	0.00
3,200.00	11.85	239.81	3,182.83	-93.44	-160.62	-80.53	0.00	0.00	0.00
3,300.00	11.85	239.81	3,280.70	-103.77	-178.38	-89.43	0.00	0.00	0.00
3,400.00	11.85	239.81	3,378.57	-114.10	-196.13	-98.33	0.00	0.00	0.00
3,500.00	11.85	239.81	3,476.44	-124.42	-213.88	-107.23	0.00	0.00	0.00
3,600.00	11.85	239.81	3,574.31	-134.75	-231.64	-116.13	0.00	0.00	0.00
3,700.00	11.85	239.81	3,672.17	-145.08	-249.39	-125.03	0.00	0.00	0.00
3,800.00	11.85	239.81	3,770.04	-155.41	-267.14	-133.93	0.00	0.00	0.00
3,900.00	11.85	239.81	3,867.91	-165.74	-284.90	-142.83	0.00	0.00	0.00
4,000.00	11.85	239.81	3,965.78	-176.06	-302.65	-151.73	0.00	0.00	0.00
4,100.00	11.85	239.81	4,063.65	-186.39	-320.40	-160.63	0.00	0.00	0.00
4,200.00	11.85	239.81	4,161.51	-196.72	-338.16	-169.53	0.00	0.00	0.00
4,300.00	11.85	239.81	4,259.38	-207.05	-355.91	-178.43	0.00	0.00	0.00
4,400.00	11.85	239.81	4,357.25	-217.37	-373.67	-187.33	0.00	0.00	0.00
4,500.00	11.85	239.81	4,455.12	-227.70	-391.42	-196.23	0.00	0.00	0.00
4,600.00	11.85	239.81	4,552.99	-238.03	-409.17	-205.13	0.00	0.00	0.00
4,700.00	11.85	239.81	4,650.85	-248.36	-426.93	-214.03	0.00	0.00	0.00
4,800.00	11.85	239.81	4,748.72	-258.69	-444.68	-222.93	0.00	0.00	0.00
4,900.00	11.85	239.81	4,846.59	-269.01	-462.43	-231.83	0.00	0.00	0.00

<b>Database:</b>	DB_Jul2216dt_v14	<b>Local Co-ordinate Reference:</b>	Well Middlepark 18-19-1L
<b>Company:</b>	Confluence Resources	<b>TVD Reference:</b>	RKB=4558+24 @ 4582.00ft
<b>Project:</b>	Weld County, Colorado	<b>MD Reference:</b>	RKB=4558+24 @ 4582.00ft
<b>Site:</b>	Section 18-T04N-R62W	<b>North Reference:</b>	True
<b>Well:</b>	Middlepark 18-19-1L	<b>Survey Calculation Method:</b>	Minimum Curvature
<b>Wellbore:</b>	Original Hole		
<b>Design:</b>	plan2		

Planned Survey									
Measured Depth (ft)	Inclination (°)	Azimuth (°)	Vertical Depth (ft)	+N/-S (ft)	+E/-W (ft)	Vertical Section (ft)	Dogleg Rate (°/100ft)	Build Rate (°/100ft)	Turn Rate (°/100ft)
5,000.00	11.85	239.81	4,944.46	-279.34	-480.19	-240.73	0.00	0.00	0.00
5,100.00	11.85	239.81	5,042.33	-289.67	-497.94	-249.64	0.00	0.00	0.00
5,200.00	11.85	239.81	5,140.19	-300.00	-515.69	-258.54	0.00	0.00	0.00
5,300.00	11.85	239.81	5,238.06	-310.32	-533.45	-267.44	0.00	0.00	0.00
5,400.00	11.85	239.81	5,335.93	-320.65	-551.20	-276.34	0.00	0.00	0.00
5,500.00	11.85	239.81	5,433.80	-330.98	-568.95	-285.24	0.00	0.00	0.00
5,600.00	11.85	239.81	5,531.67	-341.31	-586.71	-294.14	0.00	0.00	0.00
5,671.59	11.85	239.81	5,601.73	-348.70	-599.42	-300.51	0.00	0.00	0.00
<b>Begin 10°/100' build</b>									
5,700.00	10.75	253.21	5,629.59	-350.93	-604.47	-302.34	10.00	-3.89	47.17
5,800.00	12.44	303.98	5,727.79	-347.60	-622.38	-297.61	10.00	1.69	50.77
5,900.00	19.79	329.23	5,823.91	-326.99	-640.01	-275.67	10.00	7.35	25.26
6,000.00	28.75	340.25	5,915.03	-289.71	-656.84	-237.19	10.00	8.96	11.01
6,100.00	38.19	346.25	5,998.38	-236.92	-672.35	-183.34	10.00	9.45	6.00
6,200.00	47.84	350.14	6,071.42	-170.21	-686.08	-115.75	10.00	9.65	3.89
6,300.00	57.58	352.99	6,131.94	-91.60	-697.60	-36.49	10.00	9.74	2.85
6,400.00	67.37	355.28	6,178.11	-3.49	-706.57	52.05	10.00	9.79	2.29
6,500.00	77.19	357.26	6,208.50	91.44	-712.71	147.18	10.00	9.82	1.98
6,600.00	87.03	359.09	6,222.22	190.32	-715.84	246.00	10.00	9.83	1.83
6,630.22	90.00	359.63	6,223.00	220.53	-716.17	276.14	10.00	9.84	1.79
<b>LP Begin 90° lateral</b>									
6,700.00	90.00	359.63	6,223.00	290.30	-716.62	345.73	0.00	0.00	0.00
6,800.00	90.00	359.63	6,223.00	390.30	-717.26	445.47	0.00	0.00	0.00
6,900.00	90.00	359.63	6,223.00	490.30	-717.90	545.21	0.00	0.00	0.00
7,000.00	90.00	359.63	6,223.00	590.30	-718.54	644.95	0.00	0.00	0.00
7,100.00	90.00	359.63	6,223.00	690.30	-719.18	744.69	0.00	0.00	0.00
7,200.00	90.00	359.63	6,223.00	790.29	-719.82	844.43	0.00	0.00	0.00
7,300.00	90.00	359.63	6,223.00	890.29	-720.45	944.17	0.00	0.00	0.00
7,400.00	90.00	359.63	6,223.00	990.29	-721.09	1,043.90	0.00	0.00	0.00
7,500.00	90.00	359.63	6,223.00	1,090.29	-721.73	1,143.64	0.00	0.00	0.00
7,600.00	90.00	359.63	6,223.00	1,190.29	-722.37	1,243.38	0.00	0.00	0.00
7,700.00	90.00	359.63	6,223.00	1,290.28	-723.01	1,343.12	0.00	0.00	0.00
7,800.00	90.00	359.63	6,223.00	1,390.28	-723.65	1,442.86	0.00	0.00	0.00
7,900.00	90.00	359.63	6,223.00	1,490.28	-724.29	1,542.60	0.00	0.00	0.00
8,000.00	90.00	359.63	6,223.00	1,590.28	-724.93	1,642.34	0.00	0.00	0.00
8,100.00	90.00	359.63	6,223.00	1,690.28	-725.57	1,742.08	0.00	0.00	0.00
8,200.00	90.00	359.63	6,223.00	1,790.27	-726.21	1,841.82	0.00	0.00	0.00
8,300.00	90.00	359.63	6,223.00	1,890.27	-726.85	1,941.55	0.00	0.00	0.00
8,400.00	90.00	359.63	6,223.00	1,990.27	-727.49	2,041.29	0.00	0.00	0.00
8,500.00	90.00	359.63	6,223.00	2,090.27	-728.13	2,141.03	0.00	0.00	0.00
8,600.00	90.00	359.63	6,223.00	2,190.27	-728.77	2,240.77	0.00	0.00	0.00
8,700.00	90.00	359.63	6,223.00	2,290.26	-729.41	2,340.51	0.00	0.00	0.00
8,800.00	90.00	359.63	6,223.00	2,390.26	-730.05	2,440.25	0.00	0.00	0.00
8,900.00	90.00	359.63	6,223.00	2,490.26	-730.68	2,539.99	0.00	0.00	0.00
9,000.00	90.00	359.63	6,223.00	2,590.26	-731.32	2,639.73	0.00	0.00	0.00
9,100.00	90.00	359.63	6,223.00	2,690.26	-731.96	2,739.47	0.00	0.00	0.00
9,200.00	90.00	359.63	6,223.00	2,790.25	-732.60	2,839.20	0.00	0.00	0.00
9,300.00	90.00	359.63	6,223.00	2,890.25	-733.24	2,938.94	0.00	0.00	0.00
9,400.00	90.00	359.63	6,223.00	2,990.25	-733.88	3,038.68	0.00	0.00	0.00
9,500.00	90.00	359.63	6,223.00	3,090.25	-734.52	3,138.42	0.00	0.00	0.00
9,600.00	90.00	359.63	6,223.00	3,190.25	-735.16	3,238.16	0.00	0.00	0.00
9,700.00	90.00	359.63	6,223.00	3,290.24	-735.80	3,337.90	0.00	0.00	0.00
9,800.00	90.00	359.63	6,223.00	3,390.24	-736.44	3,437.64	0.00	0.00	0.00
9,900.00	90.00	359.63	6,223.00	3,490.24	-737.08	3,537.38	0.00	0.00	0.00

<b>Database:</b>	DB_Jul2216dt_v14	<b>Local Co-ordinate Reference:</b>	Well Middlepark 18-19-1L
<b>Company:</b>	Confluence Resources	<b>TVD Reference:</b>	RKB=4558+24 @ 4582.00ft
<b>Project:</b>	Weld County, Colorado	<b>MD Reference:</b>	RKB=4558+24 @ 4582.00ft
<b>Site:</b>	Section 18-T04N-R62W	<b>North Reference:</b>	True
<b>Well:</b>	Middlepark 18-19-1L	<b>Survey Calculation Method:</b>	Minimum Curvature
<b>Wellbore:</b>	Original Hole		
<b>Design:</b>	plan2		

Planned Survey									
Measured Depth (ft)	Inclination (°)	Azimuth (°)	Vertical Depth (ft)	+N/-S (ft)	+E/-W (ft)	Vertical Section (ft)	Dogleg Rate (°/100ft)	Build Rate (°/100ft)	Turn Rate (°/100ft)
10,000.00	90.00	359.63	6,223.00	3,590.24	-737.72	3,637.11	0.00	0.00	0.00
10,100.00	90.00	359.63	6,223.00	3,690.24	-738.36	3,736.85	0.00	0.00	0.00
10,200.00	90.00	359.63	6,223.00	3,790.23	-739.00	3,836.59	0.00	0.00	0.00
10,300.00	90.00	359.63	6,223.00	3,890.23	-739.64	3,936.33	0.00	0.00	0.00
10,400.00	90.00	359.63	6,223.00	3,990.23	-740.27	4,036.07	0.00	0.00	0.00
10,500.00	90.00	359.63	6,223.00	4,090.23	-740.91	4,135.81	0.00	0.00	0.00
10,600.00	90.00	359.63	6,223.00	4,190.23	-741.55	4,235.55	0.00	0.00	0.00
10,700.00	90.00	359.63	6,223.00	4,290.22	-742.19	4,335.29	0.00	0.00	0.00
10,800.00	90.00	359.63	6,223.00	4,390.22	-742.83	4,435.03	0.00	0.00	0.00
10,900.00	90.00	359.63	6,223.00	4,490.22	-743.47	4,534.76	0.00	0.00	0.00
11,000.00	90.00	359.63	6,223.00	4,590.22	-744.11	4,634.50	0.00	0.00	0.00
11,100.00	90.00	359.63	6,223.00	4,690.22	-744.75	4,734.24	0.00	0.00	0.00
11,200.00	90.00	359.63	6,223.00	4,790.21	-745.39	4,833.98	0.00	0.00	0.00
11,300.00	90.00	359.63	6,223.00	4,890.21	-746.03	4,933.72	0.00	0.00	0.00
11,400.00	90.00	359.63	6,223.00	4,990.21	-746.67	5,033.46	0.00	0.00	0.00
11,500.00	90.00	359.63	6,223.00	5,090.21	-747.31	5,133.20	0.00	0.00	0.00
11,600.00	90.00	359.63	6,223.00	5,190.20	-747.95	5,232.94	0.00	0.00	0.00
11,700.00	90.00	359.63	6,223.00	5,290.20	-748.59	5,332.67	0.00	0.00	0.00
11,800.00	90.00	359.63	6,223.00	5,390.20	-749.23	5,432.41	0.00	0.00	0.00
11,900.00	90.00	359.63	6,223.00	5,490.20	-749.86	5,532.15	0.00	0.00	0.00
12,000.00	90.00	359.63	6,223.00	5,590.20	-750.50	5,631.89	0.00	0.00	0.00
12,100.00	90.00	359.63	6,223.00	5,690.19	-751.14	5,731.63	0.00	0.00	0.00
12,200.00	90.00	359.63	6,223.00	5,790.19	-751.78	5,831.37	0.00	0.00	0.00
12,300.00	90.00	359.63	6,223.00	5,890.19	-752.42	5,931.11	0.00	0.00	0.00
12,400.00	90.00	359.63	6,223.00	5,990.19	-753.06	6,030.85	0.00	0.00	0.00
12,500.00	90.00	359.63	6,223.00	6,090.19	-753.70	6,130.59	0.00	0.00	0.00
12,600.00	90.00	359.63	6,223.00	6,190.18	-754.34	6,230.32	0.00	0.00	0.00
12,700.00	90.00	359.63	6,223.00	6,290.18	-754.98	6,330.06	0.00	0.00	0.00
12,800.00	90.00	359.63	6,223.00	6,390.18	-755.62	6,429.80	0.00	0.00	0.00
12,900.00	90.00	359.63	6,223.00	6,490.18	-756.26	6,529.54	0.00	0.00	0.00
13,000.00	90.00	359.63	6,223.00	6,590.18	-756.90	6,629.28	0.00	0.00	0.00
13,100.00	90.00	359.63	6,223.00	6,690.17	-757.54	6,729.02	0.00	0.00	0.00
13,200.00	90.00	359.63	6,223.00	6,790.17	-758.18	6,828.76	0.00	0.00	0.00
13,300.00	90.00	359.63	6,223.00	6,890.17	-758.82	6,928.50	0.00	0.00	0.00
13,400.00	90.00	359.63	6,223.00	6,990.17	-759.45	7,028.24	0.00	0.00	0.00
13,500.00	90.00	359.63	6,223.00	7,090.17	-760.09	7,127.97	0.00	0.00	0.00
13,600.00	90.00	359.63	6,223.00	7,190.16	-760.73	7,227.71	0.00	0.00	0.00
13,700.00	90.00	359.63	6,223.00	7,290.16	-761.37	7,327.45	0.00	0.00	0.00
13,800.00	90.00	359.63	6,223.00	7,390.16	-762.01	7,427.19	0.00	0.00	0.00
13,900.00	90.00	359.63	6,223.00	7,490.16	-762.65	7,526.93	0.00	0.00	0.00
14,000.00	90.00	359.63	6,223.00	7,590.16	-763.29	7,626.67	0.00	0.00	0.00
14,100.00	90.00	359.63	6,223.00	7,690.15	-763.93	7,726.41	0.00	0.00	0.00
14,200.00	90.00	359.63	6,223.00	7,790.15	-764.57	7,826.15	0.00	0.00	0.00
14,300.00	90.00	359.63	6,223.00	7,890.15	-765.21	7,925.88	0.00	0.00	0.00
14,400.00	90.00	359.63	6,223.00	7,990.15	-765.85	8,025.62	0.00	0.00	0.00
14,500.00	90.00	359.63	6,223.00	8,090.15	-766.49	8,125.36	0.00	0.00	0.00
14,600.00	90.00	359.63	6,223.00	8,190.14	-767.13	8,225.10	0.00	0.00	0.00
14,700.00	90.00	359.63	6,223.00	8,290.14	-767.77	8,324.84	0.00	0.00	0.00
14,800.00	90.00	359.63	6,223.00	8,390.14	-768.41	8,424.58	0.00	0.00	0.00
14,900.00	90.00	359.63	6,223.00	8,490.14	-769.04	8,524.32	0.00	0.00	0.00
15,000.00	90.00	359.63	6,223.00	8,590.14	-769.68	8,624.06	0.00	0.00	0.00
15,100.00	90.00	359.63	6,223.00	8,690.13	-770.32	8,723.80	0.00	0.00	0.00
15,200.00	90.00	359.63	6,223.00	8,790.13	-770.96	8,823.53	0.00	0.00	0.00
15,300.00	90.00	359.63	6,223.00	8,890.13	-771.60	8,923.27	0.00	0.00	0.00

<b>Database:</b>	DB_Jul2216dt_v14	<b>Local Co-ordinate Reference:</b>	Well Middlepark 18-19-1L
<b>Company:</b>	Confluence Resources	<b>TVD Reference:</b>	RKB=4558+24 @ 4582.00ft
<b>Project:</b>	Weld County, Colorado	<b>MD Reference:</b>	RKB=4558+24 @ 4582.00ft
<b>Site:</b>	Section 18-T04N-R62W	<b>North Reference:</b>	True
<b>Well:</b>	Middlepark 18-19-1L	<b>Survey Calculation Method:</b>	Minimum Curvature
<b>Wellbore:</b>	Original Hole		
<b>Design:</b>	plan2		

Planned Survey									
Measured Depth (ft)	Inclination (°)	Azimuth (°)	Vertical Depth (ft)	+N/-S (ft)	+E/-W (ft)	Vertical Section (ft)	Dogleg Rate (°/100ft)	Build Rate (°/100ft)	Turn Rate (°/100ft)
15,400.00	90.00	359.63	6,223.00	8,990.13	-772.24	9,023.01	0.00	0.00	0.00
15,500.00	90.00	359.63	6,223.00	9,090.13	-772.88	9,122.75	0.00	0.00	0.00
15,600.00	90.00	359.63	6,223.00	9,190.12	-773.52	9,222.49	0.00	0.00	0.00
15,700.00	90.00	359.63	6,223.00	9,290.12	-774.16	9,322.23	0.00	0.00	0.00
15,800.00	90.00	359.63	6,223.00	9,390.12	-774.80	9,421.97	0.00	0.00	0.00
15,900.00	90.00	359.63	6,223.00	9,490.12	-775.44	9,521.71	0.00	0.00	0.00
16,000.00	90.00	359.63	6,223.00	9,590.12	-776.08	9,621.45	0.00	0.00	0.00
16,100.00	90.00	359.63	6,223.00	9,690.11	-776.72	9,721.18	0.00	0.00	0.00
16,200.00	90.00	359.63	6,223.00	9,790.11	-777.36	9,820.92	0.00	0.00	0.00
16,275.40	90.00	359.63	6,223.00	9,865.51	-777.84	9,896.13	0.00	0.00	0.00
<b>PBHL/TD 16275.40 MD/6223.00 TVD</b>									
16,275.45	90.00	359.63	6,223.00	9,865.56	-777.84	9,896.17	0.00	0.00	0.00

Design Targets									
Target Name - hit/miss target - Shape	Dip Angle (°)	Dip Dir. (°)	TVD (ft)	+N/-S (ft)	+E/-W (ft)	Northing (usft)	Easting (usft)	Latitude	Longitude
Middlepark 18-19-1L BH - plan hits target center - Point	0.00	0.00	6,223.00	9,865.56	-777.84	14,648,607.57	1,815,004.16	40.33298373	-104.37353515
Middlepark 18-19-1L LP - plan hits target center - Point	0.00	0.00	6,223.00	220.52	-716.17	14,638,963.24	1,815,134.35	40.30649907	-104.37331293

Plan Annotations				
Measured Depth (ft)	Vertical Depth (ft)	Local Coordinates		Comment
		+N/-S (ft)	+E/-W (ft)	
2,000.00	2,000.00	0.00	0.00	KOP Begin 1°/100' build
2,592.61	2,588.39	-30.71	-52.79	Begin 11.85° tangent
5,671.59	5,601.73	-348.70	-599.42	Begin 10°/100' build
6,630.22	6,223.00	220.53	-716.17	LP Begin 90° lateral
16,275.40	6,223.00	9,865.51	-777.84	PBHL/TD 16275.40 MD/6223.00 TVD

<b>Database:</b>	DB_Jul2216dt_v14	<b>Local Co-ordinate Reference:</b>	Well Middlepark 18-19-1L
<b>Company:</b>	Confluence Resources	<b>TVD Reference:</b>	RKB=4558+24 @ 4582.00ft
<b>Project:</b>	Weld County, Colorado	<b>MD Reference:</b>	RKB=4558+24 @ 4582.00ft
<b>Site:</b>	Section 18-T04N-R62W	<b>North Reference:</b>	True
<b>Well:</b>	Middlepark 18-19-1L	<b>Survey Calculation Method:</b>	Minimum Curvature
<b>Wellbore:</b>	Original Hole		
<b>Design:</b>	plan2		

<b>Project</b>	Weld County, Colorado		
<b>Map System:</b>	Universal Transverse Mercator (US Survey Feet)	<b>System Datum:</b>	Mean Sea Level
<b>Geo Datum:</b>	NAD83 Colorado - HARN		
<b>Map Zone:</b>	Zone 13N (108 W to 102 W)		

Site		Section 18-T04N-R62W			
Site Position:		Northing:	14,641,153.41 usft	Latitude:	40.31252000
From:	Lat/Long	Easting:	1,814,773.97 usft	Longitude:	-104.37455000
Position Uncertainty:	0.00 ft	Slot Radius:	13-3/16 "	Grid Convergence:	0.40 °

Well	Middlepark 18-19-1L, Surf loc: 261 FSL 1618 FWL Section 18-T04N-R62W					
Well Position	+N/-S	0.00 ft	Northing:	14,638,747.81 usft	Latitude:	40.30589355
	+E/-W	0.00 ft	Easting:	1,815,852.07 usft	Longitude:	-104.37074421
Position Uncertainty		0.00 ft	Wellhead Elevation:		Ground Level:	4,558.00 ft

<b>Wellbore</b>	Original Hole				
<b>Magnetics</b>	<b>Model Name</b>	<b>Sample Date</b>	<b>Declination (°)</b>	<b>Dip Angle (°)</b>	<b>Field Strength (nT)</b>
	HDGM	4/22/2018	8.18	66.90	52,247.40000000

<b>Design</b>	plan2			
<b>Audit Notes:</b>				
<b>Version:</b>	<b>Phase:</b>	PLAN	<b>Tie On Depth:</b>	0.00
<b>Vertical Section:</b>	<b>Depth From (TVD) (ft)</b>	<b>+N/-S (ft)</b>	<b>+E/-W (ft)</b>	<b>Direction (°)</b>
	0.00	0.00	0.00	355.49

<b>Plan Survey Tool Program</b>	<b>Date</b>	4/27/2018		
<b>Depth From (ft)</b>	<b>Depth To (ft)</b>	<b>Survey (Wellbore)</b>	<b>Tool Name</b>	<b>Remarks</b>
1	0.00	16,275.45 plan2 (Original Hole)		

<b>Plan Sections</b>										
<b>Measured Depth (ft)</b>	<b>Inclination (°)</b>	<b>Azimuth (°)</b>	<b>Vertical Depth (ft)</b>	<b>+N/-S (ft)</b>	<b>+E/-W (ft)</b>	<b>Dogleg Rate (°/100ft)</b>	<b>Build Rate (°/100ft)</b>	<b>Turn Rate (°/100ft)</b>	<b>TFO (°)</b>	<b>Target</b>
0.00	0.00	0.00	0.00	0.00	0.00	0.00	0.00	0.00	0.00	
2,000.00	0.00	0.00	2,000.00	0.00	0.00	0.00	0.00	0.00	0.00	
2,592.61	11.85	239.81	2,588.40	-30.71	-52.79	2.00	2.00	0.00	239.81	
5,671.59	11.85	239.81	5,601.73	-348.70	-599.42	0.00	0.00	0.00	0.00	
6,630.22	90.00	359.63	6,223.00	220.52	-716.17	10.00	8.15	12.50	119.29	Middlepark 18-19-1L I
16,275.45	90.00	359.63	6,223.00	9,865.56	-777.84	0.00	0.00	0.00	0.00	Middlepark 18-19-1L I



<b>Database:</b>	DB_Jul2216dt_v14	<b>Local Co-ordinate Reference:</b>	Well Middlepark 18-19-1L
<b>Company:</b>	Confluence Resources	<b>TVD Reference:</b>	RKB=4558+24 @ 4582.00ft
<b>Project:</b>	Weld County, Colorado	<b>MD Reference:</b>	RKB=4558+24 @ 4582.00ft
<b>Site:</b>	Section 18-T04N-R62W	<b>North Reference:</b>	True
<b>Well:</b>	Middlepark 18-19-1L	<b>Survey Calculation Method:</b>	Minimum Curvature
<b>Wellbore:</b>	Original Hole		
<b>Design:</b>	plan2		

Planned Survey									
Measured Depth (ft)	Inclination (°)	Azimuth (°)	Vertical Depth (ft)	+N/-S (ft)	+E/-W (ft)	Map Northing (usft)	Map Easting (usft)	Latitude	Longitude
0.00	0.00	0.00	0.00	0.00	0.00	14,638,747.81	1,815,852.07	40.30589355	-104.37074421
100.00	0.00	0.00	100.00	0.00	0.00	14,638,747.81	1,815,852.07	40.30589355	-104.37074421
200.00	0.00	0.00	200.00	0.00	0.00	14,638,747.81	1,815,852.07	40.30589355	-104.37074421
300.00	0.00	0.00	300.00	0.00	0.00	14,638,747.81	1,815,852.07	40.30589355	-104.37074421
400.00	0.00	0.00	400.00	0.00	0.00	14,638,747.81	1,815,852.07	40.30589355	-104.37074421
500.00	0.00	0.00	500.00	0.00	0.00	14,638,747.81	1,815,852.07	40.30589355	-104.37074421
600.00	0.00	0.00	600.00	0.00	0.00	14,638,747.81	1,815,852.07	40.30589355	-104.37074421
700.00	0.00	0.00	700.00	0.00	0.00	14,638,747.81	1,815,852.07	40.30589355	-104.37074421
800.00	0.00	0.00	800.00	0.00	0.00	14,638,747.81	1,815,852.07	40.30589355	-104.37074421
900.00	0.00	0.00	900.00	0.00	0.00	14,638,747.81	1,815,852.07	40.30589355	-104.37074421
1,000.00	0.00	0.00	1,000.00	0.00	0.00	14,638,747.81	1,815,852.07	40.30589355	-104.37074421
1,100.00	0.00	0.00	1,100.00	0.00	0.00	14,638,747.81	1,815,852.07	40.30589355	-104.37074421
1,200.00	0.00	0.00	1,200.00	0.00	0.00	14,638,747.81	1,815,852.07	40.30589355	-104.37074421
1,300.00	0.00	0.00	1,300.00	0.00	0.00	14,638,747.81	1,815,852.07	40.30589355	-104.37074421
1,400.00	0.00	0.00	1,400.00	0.00	0.00	14,638,747.81	1,815,852.07	40.30589355	-104.37074421
1,500.00	0.00	0.00	1,500.00	0.00	0.00	14,638,747.81	1,815,852.07	40.30589355	-104.37074421
1,600.00	0.00	0.00	1,600.00	0.00	0.00	14,638,747.81	1,815,852.07	40.30589355	-104.37074421
1,700.00	0.00	0.00	1,700.00	0.00	0.00	14,638,747.81	1,815,852.07	40.30589355	-104.37074421
1,800.00	0.00	0.00	1,800.00	0.00	0.00	14,638,747.81	1,815,852.07	40.30589355	-104.37074421
1,900.00	0.00	0.00	1,900.00	0.00	0.00	14,638,747.81	1,815,852.07	40.30589355	-104.37074421
2,000.00	0.00	0.00	2,000.00	0.00	0.00	14,638,747.81	1,815,852.07	40.30589355	-104.37074421
<b>KOP Begin 1°/100' build</b>									
2,100.00	2.00	239.81	2,099.98	-0.88	-1.51	14,638,746.92	1,815,850.57	40.30589114	-104.37074962
2,200.00	4.00	239.81	2,199.84	-3.51	-6.03	14,638,744.26	1,815,846.06	40.30588391	-104.37076585
2,300.00	6.00	239.81	2,299.45	-7.89	-13.57	14,638,739.82	1,815,838.56	40.30587188	-104.37079287
2,400.00	8.00	239.81	2,398.70	-14.02	-24.10	14,638,733.62	1,815,828.07	40.30585505	-104.37083065
2,500.00	10.00	239.81	2,497.47	-21.88	-37.62	14,638,725.66	1,815,814.61	40.30583345	-104.37087914
2,592.61	11.85	239.81	2,588.39	-30.71	-52.79	14,638,716.72	1,815,799.50	40.30580922	-104.37093356
<b>Begin 11.85° tangent</b>									
2,600.00	11.85	239.81	2,595.63	-31.47	-54.10	14,638,715.95	1,815,798.19	40.30580712	-104.37093827
2,700.00	11.85	239.81	2,693.49	-41.80	-71.86	14,638,705.50	1,815,780.51	40.30577876	-104.37100194
2,800.00	11.85	239.81	2,791.36	-52.13	-89.61	14,638,695.04	1,815,762.83	40.30575040	-104.37106562
2,900.00	11.85	239.81	2,889.23	-62.46	-107.36	14,638,684.59	1,815,745.15	40.30572204	-104.37112930
3,000.00	11.85	239.81	2,987.10	-72.79	-125.12	14,638,674.13	1,815,727.47	40.30569368	-104.37119297
3,100.00	11.85	239.81	3,084.97	-83.11	-142.87	14,638,663.68	1,815,709.79	40.30566532	-104.37125665
3,200.00	11.85	239.81	3,182.83	-93.44	-160.62	14,638,653.23	1,815,692.11	40.30563696	-104.37132032
3,300.00	11.85	239.81	3,280.70	-103.77	-178.38	14,638,642.77	1,815,674.43	40.30560860	-104.37138400
3,400.00	11.85	239.81	3,378.57	-114.10	-196.13	14,638,632.32	1,815,656.76	40.30558024	-104.37144767
3,500.00	11.85	239.81	3,476.44	-124.42	-213.88	14,638,621.87	1,815,639.08	40.30555188	-104.37151135
3,600.00	11.85	239.81	3,574.31	-134.75	-231.64	14,638,611.41	1,815,621.40	40.30552352	-104.37157502
3,700.00	11.85	239.81	3,672.17	-145.08	-249.39	14,638,600.96	1,815,603.72	40.30549516	-104.37163870
3,800.00	11.85	239.81	3,770.04	-155.41	-267.14	14,638,590.51	1,815,586.04	40.30546680	-104.37170237
3,900.00	11.85	239.81	3,867.91	-165.74	-284.90	14,638,580.05	1,815,568.36	40.30543844	-104.37176605
4,000.00	11.85	239.81	3,965.78	-176.06	-302.65	14,638,569.60	1,815,550.68	40.30541008	-104.37182973
4,100.00	11.85	239.81	4,063.65	-186.39	-320.40	14,638,559.14	1,815,533.00	40.30538172	-104.37189340
4,200.00	11.85	239.81	4,161.51	-196.72	-338.16	14,638,548.69	1,815,515.32	40.30535336	-104.37195708
4,300.00	11.85	239.81	4,259.38	-207.05	-355.91	14,638,538.24	1,815,497.64	40.30532500	-104.37202075
4,400.00	11.85	239.81	4,357.25	-217.37	-373.67	14,638,527.78	1,815,479.96	40.30529664	-104.37208443
4,500.00	11.85	239.81	4,455.12	-227.70	-391.42	14,638,517.33	1,815,462.28	40.30526828	-104.37214810
4,600.00	11.85	239.81	4,552.99	-238.03	-409.17	14,638,506.88	1,815,444.60	40.30523992	-104.37221178
4,700.00	11.85	239.81	4,650.85	-248.36	-426.93	14,638,496.42	1,815,426.92	40.30521156	-104.37227545
4,800.00	11.85	239.81	4,748.72	-258.69	-444.68	14,638,485.97	1,815,409.24	40.30518320	-104.37233912
4,900.00	11.85	239.81	4,846.59	-269.01	-462.43	14,638,475.52	1,815,391.56	40.30515484	-104.37240280
5,000.00	11.85	239.81	4,944.46	-279.34	-480.19	14,638,465.06	1,815,373.88	40.30512648	-104.37246647



<b>Database:</b>	DB_Jul2216dt_v14	<b>Local Co-ordinate Reference:</b>	Well Middlepark 18-19-1L
<b>Company:</b>	Confluence Resources	<b>TVD Reference:</b>	RKB=4558+24 @ 4582.00ft
<b>Project:</b>	Weld County, Colorado	<b>MD Reference:</b>	RKB=4558+24 @ 4582.00ft
<b>Site:</b>	Section 18-T04N-R62W	<b>North Reference:</b>	True
<b>Well:</b>	Middlepark 18-19-1L	<b>Survey Calculation Method:</b>	Minimum Curvature
<b>Wellbore:</b>	Original Hole		
<b>Design:</b>	plan2		

Planned Survey										
Measured Depth (ft)	Inclination (°)	Azimuth (°)	Vertical Depth (ft)	+N/-S (ft)	+E/-W (ft)	Map Northing (usft)	Map Easting (usft)	Latitude	Longitude	
5,100.00	11.85	239.81	5,042.33	-289.67	-497.94	14,638,454.61	1,815,356.20	40.30509812	-104.37253015	
5,200.00	11.85	239.81	5,140.19	-300.00	-515.69	14,638,444.15	1,815,338.52	40.30506976	-104.37259382	
5,300.00	11.85	239.81	5,238.06	-310.32	-533.45	14,638,433.70	1,815,320.84	40.30504140	-104.37265750	
5,400.00	11.85	239.81	5,335.93	-320.65	-551.20	14,638,423.25	1,815,303.17	40.30501303	-104.37272117	
5,500.00	11.85	239.81	5,433.80	-330.98	-568.95	14,638,412.79	1,815,285.49	40.30498467	-104.37278485	
5,600.00	11.85	239.81	5,531.67	-341.31	-586.71	14,638,402.34	1,815,267.81	40.30495631	-104.37284852	
5,671.59	11.85	239.81	5,601.73	-348.70	-599.42	14,638,394.86	1,815,255.15	40.30493601	-104.37289411	
Begin 10°/100' build										
5,700.00	10.75	253.21	5,629.59	-350.93	-604.47	14,638,392.59	1,815,250.11	40.30492988	-104.37291225	
5,800.00	12.44	303.98	5,727.79	-347.60	-622.38	14,638,395.79	1,815,232.18	40.30493903	-104.37297645	
5,900.00	19.79	329.23	5,823.91	-326.99	-640.01	14,638,416.28	1,815,214.40	40.30499564	-104.37303970	
6,000.00	28.75	340.25	5,915.03	-289.71	-656.84	14,638,453.43	1,815,197.31	40.30509798	-104.37310006	
6,100.00	38.19	346.25	5,998.38	-236.92	-672.35	14,638,506.12	1,815,181.42	40.30524295	-104.37315571	
6,200.00	47.84	350.14	6,071.42	-170.21	-686.08	14,638,572.73	1,815,167.22	40.30542614	-104.37320494	
6,300.00	57.58	352.99	6,131.94	-91.60	-697.60	14,638,651.25	1,815,155.14	40.30564199	-104.37324628	
6,400.00	67.37	355.28	6,178.11	-3.49	-706.57	14,638,739.30	1,815,145.55	40.30588393	-104.37327845	
6,500.00	77.19	357.26	6,208.50	91.44	-712.71	14,638,834.19	1,815,138.73	40.30614462	-104.37330049	
6,600.00	87.03	359.09	6,222.22	190.32	-715.84	14,638,933.04	1,815,134.90	40.30641613	-104.37331173	
6,630.22	90.00	359.63	6,223.00	220.53	-716.17	14,638,963.24	1,815,134.35	40.30649907	-104.37331293	
LP Begin 90° lateral										
6,700.00	90.00	359.63	6,223.00	290.30	-716.62	14,639,033.01	1,815,133.41	40.30669068	-104.37331454	
6,800.00	90.00	359.63	6,223.00	390.30	-717.26	14,639,133.00	1,815,132.06	40.30696527	-104.37331685	
6,900.00	90.00	359.63	6,223.00	490.30	-717.90	14,639,232.99	1,815,130.71	40.30723986	-104.37331915	
7,000.00	90.00	359.63	6,223.00	590.30	-718.54	14,639,332.98	1,815,129.36	40.30751445	-104.37332145	
7,100.00	90.00	359.63	6,223.00	690.30	-719.18	14,639,432.98	1,815,128.01	40.30778903	-104.37332376	
7,200.00	90.00	359.63	6,223.00	790.29	-719.82	14,639,532.97	1,815,126.66	40.30806362	-104.37332606	
7,300.00	90.00	359.63	6,223.00	890.29	-720.45	14,639,632.96	1,815,125.31	40.30833821	-104.37332836	
7,400.00	90.00	359.63	6,223.00	990.29	-721.09	14,639,732.95	1,815,123.96	40.30861280	-104.37333067	
7,500.00	90.00	359.63	6,223.00	1,090.29	-721.73	14,639,832.94	1,815,122.61	40.30888739	-104.37333297	
7,600.00	90.00	359.63	6,223.00	1,190.29	-722.37	14,639,932.93	1,815,121.26	40.30916198	-104.37333527	
7,700.00	90.00	359.63	6,223.00	1,290.28	-723.01	14,640,032.92	1,815,119.91	40.30943657	-104.37333758	
7,800.00	90.00	359.63	6,223.00	1,390.28	-723.65	14,640,132.91	1,815,118.56	40.30971116	-104.37333988	
7,900.00	90.00	359.63	6,223.00	1,490.28	-724.29	14,640,232.90	1,815,117.21	40.30998575	-104.37334219	
8,000.00	90.00	359.63	6,223.00	1,590.28	-724.93	14,640,332.89	1,815,115.86	40.31026033	-104.37334449	
8,100.00	90.00	359.63	6,223.00	1,690.28	-725.57	14,640,432.88	1,815,114.51	40.31053492	-104.37334679	
8,200.00	90.00	359.63	6,223.00	1,790.27	-726.21	14,640,532.87	1,815,113.16	40.31080951	-104.37334910	
8,300.00	90.00	359.63	6,223.00	1,890.27	-726.85	14,640,632.86	1,815,111.81	40.31108410	-104.37335140	
8,400.00	90.00	359.63	6,223.00	1,990.27	-727.49	14,640,732.85	1,815,110.46	40.31135869	-104.37335370	
8,500.00	90.00	359.63	6,223.00	2,090.27	-728.13	14,640,832.85	1,815,109.11	40.31163328	-104.37335601	
8,600.00	90.00	359.63	6,223.00	2,190.27	-728.77	14,640,932.84	1,815,107.76	40.31190787	-104.37335831	
8,700.00	90.00	359.63	6,223.00	2,290.26	-729.41	14,641,032.83	1,815,106.41	40.31218246	-104.37336062	
8,800.00	90.00	359.63	6,223.00	2,390.26	-730.05	14,641,132.82	1,815,105.06	40.31245704	-104.37336292	
8,900.00	90.00	359.63	6,223.00	2,490.26	-730.68	14,641,232.81	1,815,103.71	40.31273163	-104.37336522	
9,000.00	90.00	359.63	6,223.00	2,590.26	-731.32	14,641,332.80	1,815,102.36	40.31300621	-104.37336753	
9,100.00	90.00	359.63	6,223.00	2,690.26	-731.96	14,641,432.79	1,815,101.01	40.31328080	-104.37336983	
9,200.00	90.00	359.63	6,223.00	2,790.25	-732.60	14,641,532.78	1,815,099.66	40.31355539	-104.37337213	
9,300.00	90.00	359.63	6,223.00	2,890.25	-733.24	14,641,632.77	1,815,098.31	40.31382998	-104.37337444	
9,400.00	90.00	359.63	6,223.00	2,990.25	-733.88	14,641,732.76	1,815,096.96	40.31410457	-104.37337674	
9,500.00	90.00	359.63	6,223.00	3,090.25	-734.52	14,641,832.75	1,815,095.61	40.31437915	-104.37337905	
9,600.00	90.00	359.63	6,223.00	3,190.25	-735.16	14,641,932.74	1,815,094.26	40.31465374	-104.37338135	
9,700.00	90.00	359.63	6,223.00	3,290.24	-735.80	14,642,032.73	1,815,092.92	40.31492833	-104.37338365	
9,800.00	90.00	359.63	6,223.00	3,390.24	-736.44	14,642,132.72	1,815,091.57	40.31520292	-104.37338596	
9,900.00	90.00	359.63	6,223.00	3,490.24	-737.08	14,642,232.71	1,815,090.22	40.31547751	-104.37338826	
10,000.00	90.00	359.63	6,223.00	3,590.24	-737.72	14,642,332.71	1,815,088.87	40.31575210	-104.37339056	

<b>Database:</b>	DB_Jul2216dt_v14	<b>Local Co-ordinate Reference:</b>	Well Middlepark 18-19-1L
<b>Company:</b>	Confluence Resources	<b>TVD Reference:</b>	RKB=4558+24 @ 4582.00ft
<b>Project:</b>	Weld County, Colorado	<b>MD Reference:</b>	RKB=4558+24 @ 4582.00ft
<b>Site:</b>	Section 18-T04N-R62W	<b>North Reference:</b>	True
<b>Well:</b>	Middlepark 18-19-1L	<b>Survey Calculation Method:</b>	Minimum Curvature
<b>Wellbore:</b>	Original Hole		
<b>Design:</b>	plan2		

Planned Survey										
Measured Depth (ft)	Inclination (°)	Azimuth (°)	Vertical Depth (ft)	+N/-S (ft)	+E/-W (ft)	Map Northing (usft)	Map Easting (usft)	Latitude	Longitude	
10,100.00	90.00	359.63	6,223.00	3,690.24	-738.36	14,642,432.70	1,815,087.52	40.31602669	-104.37339287	
10,200.00	90.00	359.63	6,223.00	3,790.23	-739.00	14,642,532.69	1,815,086.17	40.31630127	-104.37339517	
10,300.00	90.00	359.63	6,223.00	3,890.23	-739.64	14,642,632.68	1,815,084.82	40.31657586	-104.37339748	
10,400.00	90.00	359.63	6,223.00	3,990.23	-740.27	14,642,732.67	1,815,083.47	40.31685045	-104.37339978	
10,500.00	90.00	359.63	6,223.00	4,090.23	-740.91	14,642,832.66	1,815,082.12	40.31712504	-104.37340208	
10,600.00	90.00	359.63	6,223.00	4,190.23	-741.55	14,642,932.65	1,815,080.77	40.31739963	-104.37340439	
10,700.00	90.00	359.63	6,223.00	4,290.22	-742.19	14,643,032.64	1,815,079.42	40.31767422	-104.37340669	
10,800.00	90.00	359.63	6,223.00	4,390.22	-742.83	14,643,132.63	1,815,078.07	40.31794881	-104.37340900	
10,900.00	90.00	359.63	6,223.00	4,490.22	-743.47	14,643,232.62	1,815,076.72	40.31822339	-104.37341130	
11,000.00	90.00	359.63	6,223.00	4,590.22	-744.11	14,643,332.61	1,815,075.37	40.31849798	-104.37341360	
11,100.00	90.00	359.63	6,223.00	4,690.22	-744.75	14,643,432.60	1,815,074.02	40.31877257	-104.37341591	
11,200.00	90.00	359.63	6,223.00	4,790.21	-745.39	14,643,532.59	1,815,072.67	40.31904716	-104.37341821	
11,300.00	90.00	359.63	6,223.00	4,890.21	-746.03	14,643,632.58	1,815,071.32	40.31932175	-104.37342051	
11,400.00	90.00	359.63	6,223.00	4,990.21	-746.67	14,643,732.58	1,815,069.97	40.31959634	-104.37342282	
11,500.00	90.00	359.63	6,223.00	5,090.21	-747.31	14,643,832.57	1,815,068.62	40.31987092	-104.37342512	
11,600.00	90.00	359.63	6,223.00	5,190.20	-747.95	14,643,932.56	1,815,067.27	40.32014551	-104.37342743	
11,700.00	90.00	359.63	6,223.00	5,290.20	-748.59	14,644,032.55	1,815,065.92	40.32042010	-104.37342973	
11,800.00	90.00	359.63	6,223.00	5,390.20	-749.23	14,644,132.54	1,815,064.57	40.32069469	-104.37343203	
11,900.00	90.00	359.63	6,223.00	5,490.20	-749.86	14,644,232.53	1,815,063.22	40.32096928	-104.37343434	
12,000.00	90.00	359.63	6,223.00	5,590.20	-750.50	14,644,332.52	1,815,061.87	40.32124387	-104.37343664	
12,100.00	90.00	359.63	6,223.00	5,690.19	-751.14	14,644,432.51	1,815,060.52	40.32151845	-104.37343895	
12,200.00	90.00	359.63	6,223.00	5,790.19	-751.78	14,644,532.50	1,815,059.17	40.32179304	-104.37344125	
12,300.00	90.00	359.63	6,223.00	5,890.19	-752.42	14,644,632.49	1,815,057.82	40.32206763	-104.37344355	
12,400.00	90.00	359.63	6,223.00	5,990.19	-753.06	14,644,732.48	1,815,056.47	40.32234222	-104.37344586	
12,500.00	90.00	359.63	6,223.00	6,090.19	-753.70	14,644,832.47	1,815,055.12	40.32261681	-104.37344816	
12,600.00	90.00	359.63	6,223.00	6,190.18	-754.34	14,644,932.46	1,815,053.77	40.32289139	-104.37345047	
12,700.00	90.00	359.63	6,223.00	6,290.18	-754.98	14,645,032.45	1,815,052.42	40.32316598	-104.37345277	
12,800.00	90.00	359.63	6,223.00	6,390.18	-755.62	14,645,132.44	1,815,051.07	40.32344057	-104.37345507	
12,900.00	90.00	359.63	6,223.00	6,490.18	-756.26	14,645,232.44	1,815,049.72	40.32371516	-104.37345738	
13,000.00	90.00	359.63	6,223.00	6,590.18	-756.90	14,645,332.43	1,815,048.37	40.32398975	-104.37345968	
13,100.00	90.00	359.63	6,223.00	6,690.17	-757.54	14,645,432.42	1,815,047.02	40.32426434	-104.37346198	
13,200.00	90.00	359.63	6,223.00	6,790.17	-758.18	14,645,532.41	1,815,045.67	40.32453892	-104.37346429	
13,300.00	90.00	359.63	6,223.00	6,890.17	-758.82	14,645,632.40	1,815,044.32	40.32481351	-104.37346659	
13,400.00	90.00	359.63	6,223.00	6,990.17	-759.45	14,645,732.39	1,815,042.97	40.32508810	-104.37346890	
13,500.00	90.00	359.63	6,223.00	7,090.17	-760.09	14,645,832.38	1,815,041.62	40.32536269	-104.37347120	
13,600.00	90.00	359.63	6,223.00	7,190.16	-760.73	14,645,932.37	1,815,040.27	40.32563728	-104.37347350	
13,700.00	90.00	359.63	6,223.00	7,290.16	-761.37	14,646,032.36	1,815,038.92	40.32591186	-104.37347581	
13,800.00	90.00	359.63	6,223.00	7,390.16	-762.01	14,646,132.35	1,815,037.57	40.32618645	-104.37347811	
13,900.00	90.00	359.63	6,223.00	7,490.16	-762.65	14,646,232.34	1,815,036.22	40.32646104	-104.37348042	
14,000.00	90.00	359.63	6,223.00	7,590.16	-763.29	14,646,332.33	1,815,034.87	40.32673563	-104.37348272	
14,100.00	90.00	359.63	6,223.00	7,690.15	-763.93	14,646,432.32	1,815,033.52	40.32701022	-104.37348502	
14,200.00	90.00	359.63	6,223.00	7,790.15	-764.57	14,646,532.31	1,815,032.17	40.32728480	-104.37348733	
14,300.00	90.00	359.63	6,223.00	7,890.15	-765.21	14,646,632.31	1,815,030.82	40.32755939	-104.37348963	
14,400.00	90.00	359.63	6,223.00	7,990.15	-765.85	14,646,732.30	1,815,029.48	40.32783398	-104.37349194	
14,500.00	90.00	359.63	6,223.00	8,090.15	-766.49	14,646,832.29	1,815,028.13	40.32810857	-104.37349424	
14,600.00	90.00	359.63	6,223.00	8,190.14	-767.13	14,646,932.28	1,815,026.78	40.32838316	-104.37349654	
14,700.00	90.00	359.63	6,223.00	8,290.14	-767.77	14,647,032.27	1,815,025.43	40.32865774	-104.37349885	
14,800.00	90.00	359.63	6,223.00	8,390.14	-768.41	14,647,132.26	1,815,024.08	40.32893233	-104.37350115	
14,900.00	90.00	359.63	6,223.00	8,490.14	-769.04	14,647,232.25	1,815,022.73	40.32920692	-104.37350346	
15,000.00	90.00	359.63	6,223.00	8,590.14	-769.68	14,647,332.24	1,815,021.38	40.32948151	-104.37350576	
15,100.00	90.00	359.63	6,223.00	8,690.13	-770.32	14,647,432.23	1,815,020.03	40.32975610	-104.37350806	
15,200.00	90.00	359.63	6,223.00	8,790.13	-770.96	14,647,532.22	1,815,018.68	40.33003068	-104.37351037	
15,300.00	90.00	359.63	6,223.00	8,890.13	-771.60	14,647,632.21	1,815,017.33	40.33030527	-104.37351267	
15,400.00	90.00	359.63	6,223.00	8,990.13	-772.24	14,647,732.20	1,815,015.98	40.33057986	-104.37351498	
15,500.00	90.00	359.63	6,223.00	9,090.13	-772.88	14,647,832.19	1,815,014.63	40.33085445	-104.37351728	

<b>Database:</b>	DB_Jul2216dt_v14	<b>Local Co-ordinate Reference:</b>	Well Middlepark 18-19-1L
<b>Company:</b>	Confluence Resources	<b>TVD Reference:</b>	RKB=4558+24 @ 4582.00ft
<b>Project:</b>	Weld County, Colorado	<b>MD Reference:</b>	RKB=4558+24 @ 4582.00ft
<b>Site:</b>	Section 18-T04N-R62W	<b>North Reference:</b>	True
<b>Well:</b>	Middlepark 18-19-1L	<b>Survey Calculation Method:</b>	Minimum Curvature
<b>Wellbore:</b>	Original Hole		
<b>Design:</b>	plan2		

Planned Survey									
Measured Depth (ft)	Inclination (°)	Azimuth (°)	Vertical Depth (ft)	+N/-S (ft)	+E/-W (ft)	Map Northing (usft)	Map Easting (usft)	Latitude	Longitude
15,600.00	90.00	359.63	6,223.00	9,190.12	-773.52	14,647,932.18	1,815,013.28	40.33112903	-104.37351958
15,700.00	90.00	359.63	6,223.00	9,290.12	-774.16	14,648,032.18	1,815,011.93	40.33140362	-104.37352189
15,800.00	90.00	359.63	6,223.00	9,390.12	-774.80	14,648,132.17	1,815,010.58	40.33167821	-104.37352419
15,900.00	90.00	359.63	6,223.00	9,490.12	-775.44	14,648,232.16	1,815,009.23	40.33195280	-104.37352650
16,000.00	90.00	359.63	6,223.00	9,590.12	-776.08	14,648,332.15	1,815,007.88	40.33222739	-104.37352880
16,100.00	90.00	359.63	6,223.00	9,690.11	-776.72	14,648,432.14	1,815,006.53	40.33250197	-104.37353111
16,200.00	90.00	359.63	6,223.00	9,790.11	-777.36	14,648,532.13	1,815,005.18	40.33277656	-104.37353341
16,275.40	90.00	359.63	6,223.00	9,865.51	-777.84	14,648,607.52	1,815,004.16	40.33298360	-104.37353515
<b>PBHL/TD 16275.40 MD/6223.00 TVD</b>									
16,275.45	90.00	359.63	6,223.00	9,865.56	-777.84	14,648,607.57	1,815,004.16	40.33298373	-104.37353515

Design Targets									
Target Name - hit/miss target - Shape	Dip Angle (°)	Dip Dir. (°)	TVD (ft)	+N/-S (ft)	+E/-W (ft)	Northing (usft)	Easting (usft)	Latitude	Longitude
Middlepark 18-19-1L BH - plan hits target center - Point	0.00	0.00	6,223.00	9,865.56	-777.84	14,648,607.57	1,815,004.16	40.33298373	-104.37353515
Middlepark 18-19-1L LP - plan hits target center - Point	0.00	0.00	6,223.00	220.52	-716.17	14,638,963.24	1,815,134.35	40.30649907	-104.37331293

Plan Annotations				
Measured Depth (ft)	Vertical Depth (ft)	Local Coordinates		Comment
		+N/-S (ft)	+E/-W (ft)	
2,000.00	2,000.00	0.00	0.00	KOP Begin 1°/100' build
2,592.61	2,588.39	-30.71	-52.79	Begin 11.85° tangent
5,671.59	5,601.73	-348.70	-599.42	Begin 10°/100' build
6,630.22	6,223.00	220.53	-716.17	LP Begin 90° lateral
16,275.40	6,223.00	9,865.51	-777.84	PBHL/TD 16275.40 MD/6223.00 TVD