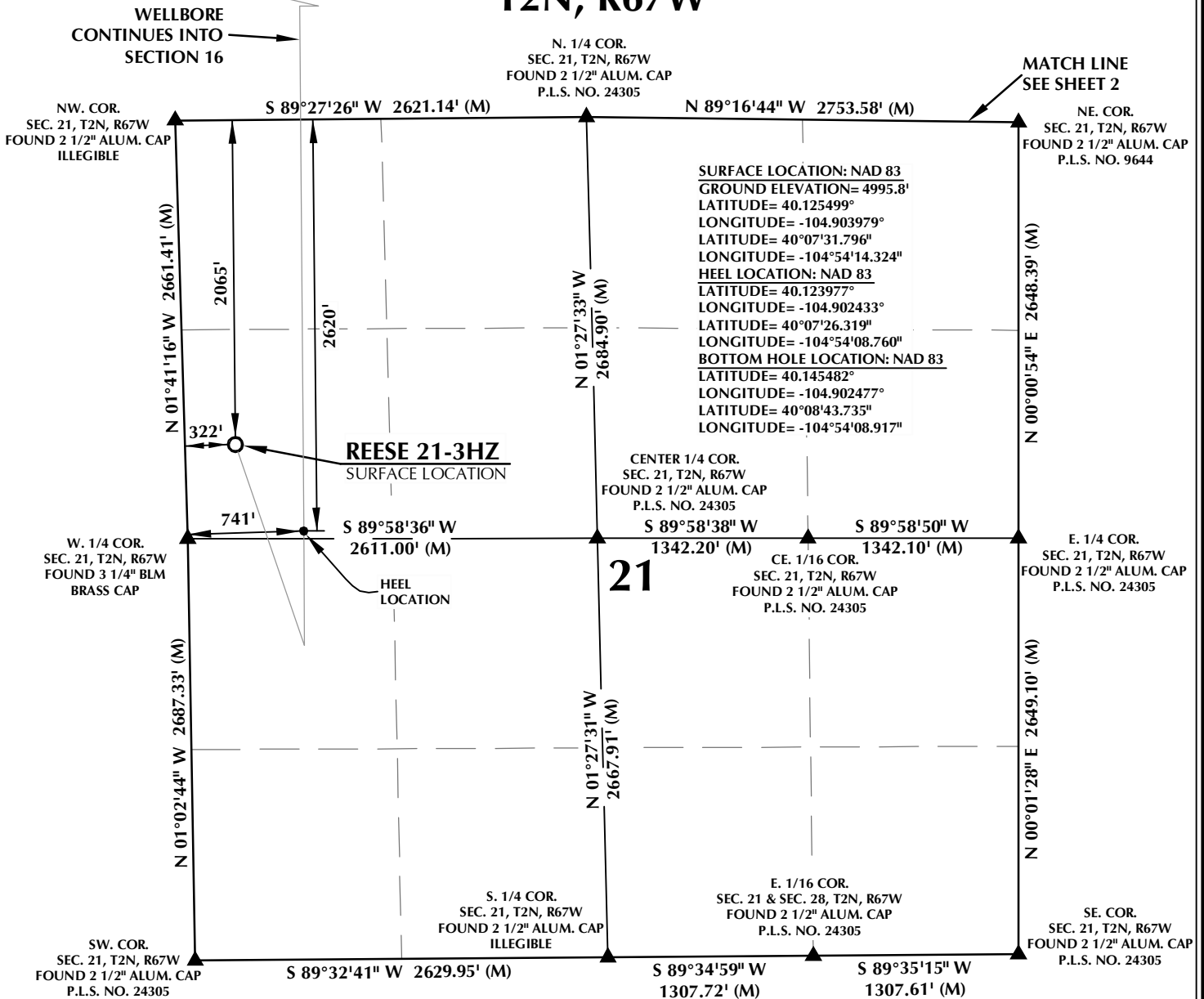


# T2N, R67W

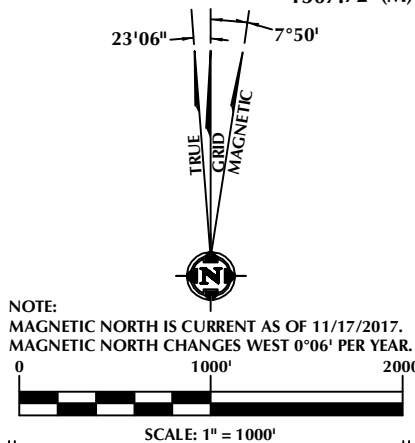


## CERTIFICATE OF SURVEYOR:

THIS IS TO CERTIFY THAT THE ABOVE PLAT WAS PREPARED FROM FIELD NOTES OF ACTUAL SURVEYS MADE BY ME OR UNDER MY SUPERVISION AND THAT THE SAME ARE TRUE AND CORRECT TO THE BEST OF MY KNOWLEDGE AND BELIEF. THIS CERTIFICATE DOES NOT REPRESENT A LAND SURVEY PLAT OR IMPROVEMENT SURVEY PLAT AS DEFINED BY C.R.S. 38-50-102 AND CANNOT BE RELIED UPON TO DETERMINE OWNERSHIP.

*Randall K. French*  
 RANDALL K. FRENCH  
 PROFESSIONAL LAND SURVEYOR  
 COLORADO REGISTRATION NUMBER 38512  
 4/17/18

NOTICE: ACCORDING TO COLORADO STATE LAW YOU MUST COMMENCE LEGAL ACTION BASED UPON ANY DEFECT IN THIS SURVEY WITHIN THREE YEARS AFTER YOU FIRST DISCOVER SUCH DEFECT. IN NO EVENT MAY ANY ACTION BASED UPON ANY DEFECT IN THIS SURVEY BE COMMENCED MORE THAN TEN YEARS FROM THE DATE ON THE CERTIFICATION SHOWN HEREON.



## NOTES:

- INDICATES SECTION CORNER.
- INDICATES CALCULATED CORNER.
- ELEVATION BASED ON NAVD88 (GEOID12B).
- BASIS OF BEARING DERIVED FROM COLORADO COORDINATE SYSTEM OF 1983 NORTH ZONE.
- ALL MEASURED DISTANCES ARE GRID. COMBINED SCALE FACTOR: .99972306 CALCULATED FROM THE N. 1/4 CORNER OF SECTION 21, T2N, R67W. OPERATOR: ROB WILSON / PDOP = 1.4.
- SEE ADDENDUM TO WELL LOCATION CERTIFICATE FOR EXISTING IMPROVEMENTS WITHIN 500' OF THE WELL PAD.
- WELL FOOTAGES ARE MEASURED AT RIGHT ANGLES TO THE SECTION LINES.
- THE BOTTOM OF HOLE BEARS N00°28'31"W, 7834' FROM THE HEEL LOCATION.

## WELL PAD - REESE 22-21HZ

REESE 21-3HZ  
 WELL LOCATION CERTIFICATE  
 2065' FNL & 322' FWL SWNW (SURFACE)  
 2620' FNL & 741' FWL SWNW (HEEL)  
 LOCATED IN SECTION 21  
 53' FNL & 607' FWL NWNW (BOTTOM)  
 LOCATED IN SECTION 16  
 T2N, R67W, 6TH P.M.  
 WELD COUNTY, COLORADO

**Kerr-McGee Oil &  
 Gas Onshore L.P.**  
 1099 18th Street  
 Denver, Colorado 80202



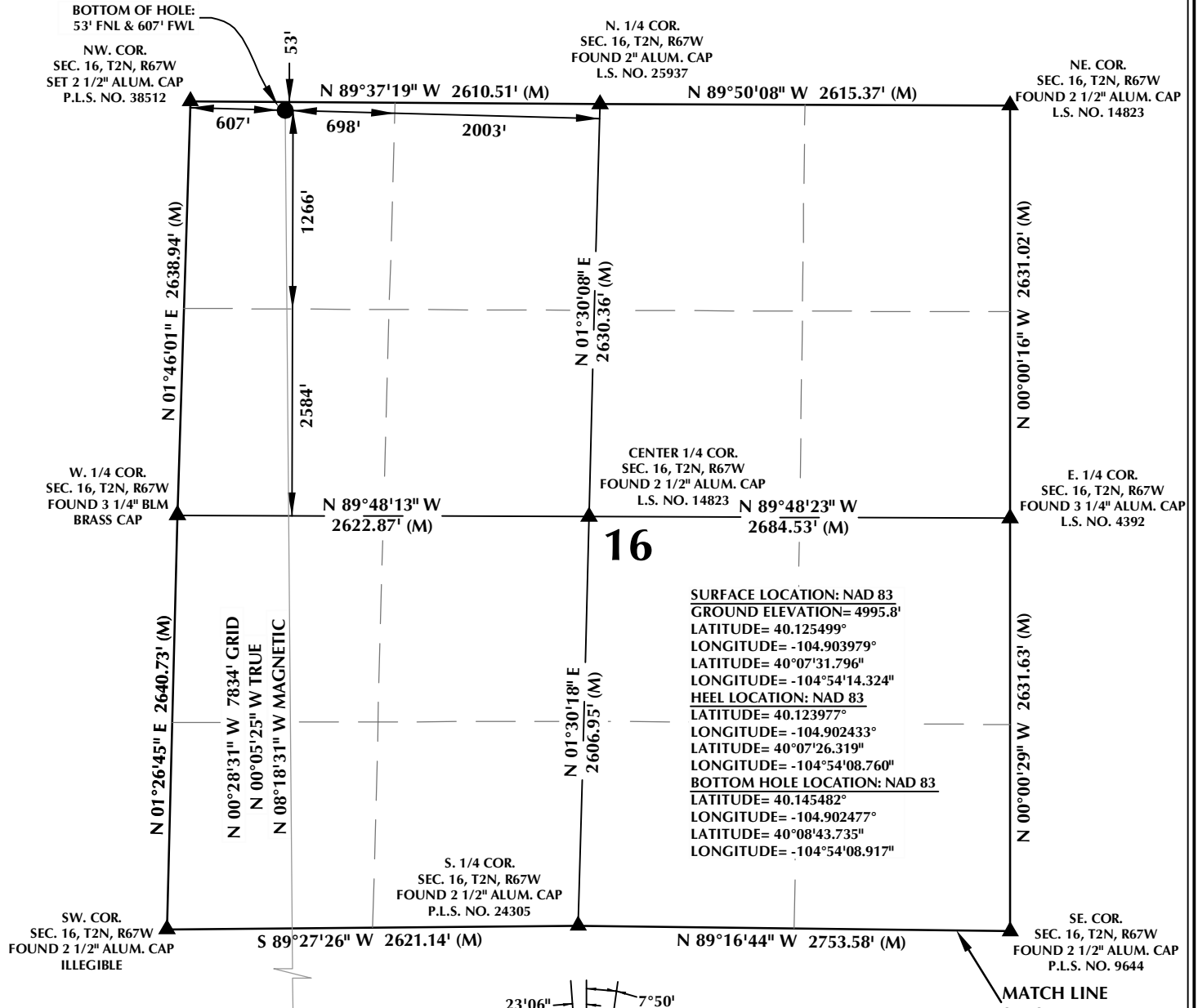
## CONSULTING, LLC

SHERIDAN OFFICE  
 1095 Saberton Avenue  
 Sheridan, Wyoming 82801  
 Phone 307-674-0609

LOVELAND OFFICE  
 1635 Foxtrail Drive, Suite 204  
 Loveland, Colorado 80538  
 Phone 970-776-4331

DRAFTED BY:	LMO	CHECKED BY:	RKF	SHEET NO:
DATE DRAFTED:	1/31/18	DATE SURVEYED:	11/17/17	1
REVISED:	4/17/18	FILE NAME:	13-89	1 OF 2

# T2N, R67W

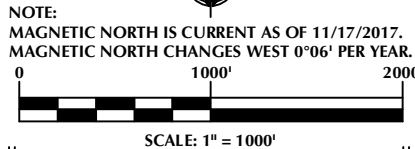


## CERTIFICATE OF SURVEYOR:

THIS IS TO CERTIFY THAT THE ABOVE PLAT WAS PREPARED FROM FIELD NOTES OF ACTUAL SURVEYS MADE BY ME OR UNDER MY SUPERVISION AND THAT THE SAME ARE TRUE AND CORRECT TO THE BEST OF MY KNOWLEDGE AND BELIEF. THIS CERTIFICATE DOES NOT REPRESENT A LAND SURVEY PLAT OR IMPROVEMENT SURVEY PLAT AS DEFINED BY C.R.S. 38-5-102 AND CANNOT BE RELIED UPON TO DETERMINE OWNERSHIP.

*Randall K. French*  
 RANDALL K. FRENCH  
 PROFESSIONAL LAND SURVEYOR  
 COLORADO REGISTRATION NUMBER 38512  
 4/17/18

**NOTICE:**  
 ACCORDING TO COLORADO STATE LAW YOU MUST COMMENCE LEGAL ACTION BASED UPON ANY DEFECT IN THIS SURVEY WITHIN THREE YEARS AFTER YOU FIRST DISCOVER SUCH DEFECT. IN NO EVENT MAY ANY ACTION BASED UPON ANY DEFECT IN THIS SURVEY BE COMMENCED MORE THAN TEN YEARS FROM THE DATE ON THE CERTIFICATION SHOWN HEREON.



## NOTES:

- INDICATES SECTION CORNER.
- INDICATES CALCULATED CORNER.
- ELEVATION BASED ON NAVD88 (GEOID12B).
- BASIS OF BEARING DERIVED FROM COLORADO COORDINATE SYSTEM OF 1983 NORTH ZONE.
- ALL MEASURED DISTANCES ARE GRID. COMBINED SCALE FACTOR: .99972306 CALCULATED FROM THE N. 1/4 CORNER OF SECTION 21, T2N, R67W. OPERATOR: ROB WILSON / PDOP = 1.4.
- SEE ADDENDUM TO WELL LOCATION CERTIFICATE FOR EXISTING IMPROVEMENTS WITHIN 500' OF THE WELL PAD.
- WELL FOOTAGES ARE MEASURED AT RIGHT ANGLES TO THE SECTION LINES.
- THE BOTTOM OF HOLE BEARS N00°28'31"W, 7834' FROM THE HEEL LOCATION.

## WELL PAD - REESE 22-21HZ

**REESE 21-3HZ**  
**WELL LOCATION CERTIFICATE**  
 2065' FNL & 322' FWL SWNW (SURFACE)  
 2620' FNL & 741' FWL SWNW (HEEL)  
 LOCATED IN SECTION 21  
 53' FNL & 607' FWL NWNW (BOTTOM)  
 LOCATED IN SECTION 16  
 T2N, R67W, 6TH P.M.  
 WELD COUNTY, COLORADO

**Kerr-McGee Oil &  
 Gas Onshore L.P.**  
 1099 18th Street  
 Denver, Colorado 80202



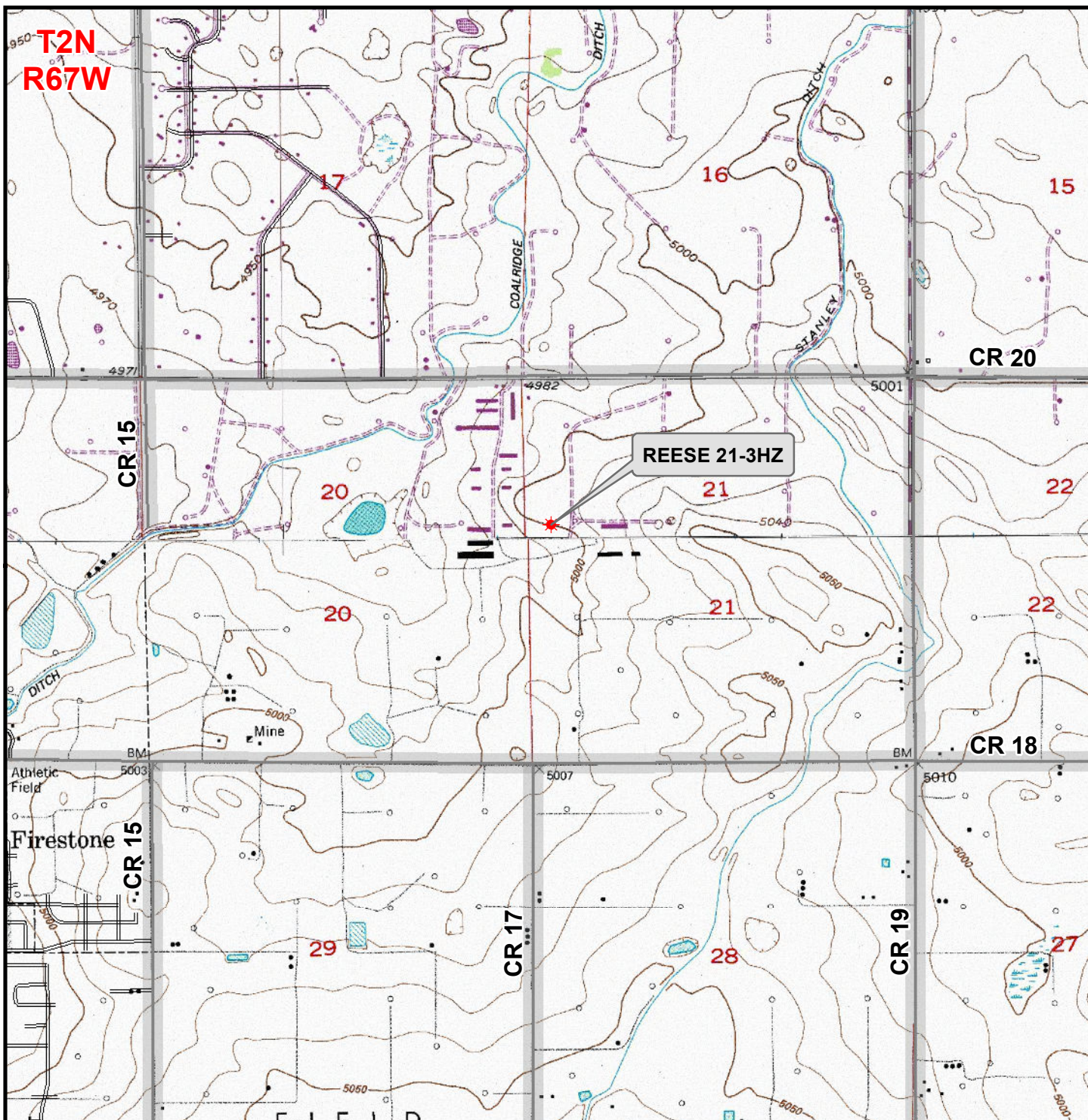
## CONSULTING, LLC

**SHERIDAN OFFICE**  
 1095 Saberton Avenue  
 Sheridan, Wyoming 82801  
 Phone 307-674-0609

**LOVELAND OFFICE**  
 1635 Foxtrail Drive, Suite 204  
 Loveland, Colorado 80538  
 Phone 970-776-4331

DRAFTED BY:	LMO	CHECKED BY:	RKF	SHEET NO:
DATE DRAFTED:	1/31/18	DATE SURVEYED:	11/17/17	2
REVISED:	4/17/18	FILE NAME:	13-89	2 OF 2





### Legend

- ★ Well - Fee - Proposed    === Road - Primitive - Existing    — Road - County - Existing  
 — Road - Improved - Existing    — Road - Highway - Existing

**WELL PAD - REESE 22-21HZ**  
**GENERAL LOCATION MAP**  
**REESE 21-3HZ**  
**LOCATED IN SECTION 21**  
**T2N, R67W, 6th P.M.**  
**WELD COUNTY, COLORADO**

**Kerr-McGee Oil &  
Gas Onshore L.P.**

1099 18th Street  
 Denver, Colorado 80202



**CONSULTING, LLC**

SHERIDAN OFFICE    LOVELAND OFFICE  
 1095 Saberton Avenue    1635 Foxtail Drive, Suite 204  
 Sheridan, Wyoming 82801    Loveland, Colorado 80538  
 Phone 307-674-0609    Phone 970-776-4331

SCALE: 1" = 2,000ft

NAD83 CO-Nft

DRAWN: DP

DATE: 31 Jan 2018

REVISED:

DATE: