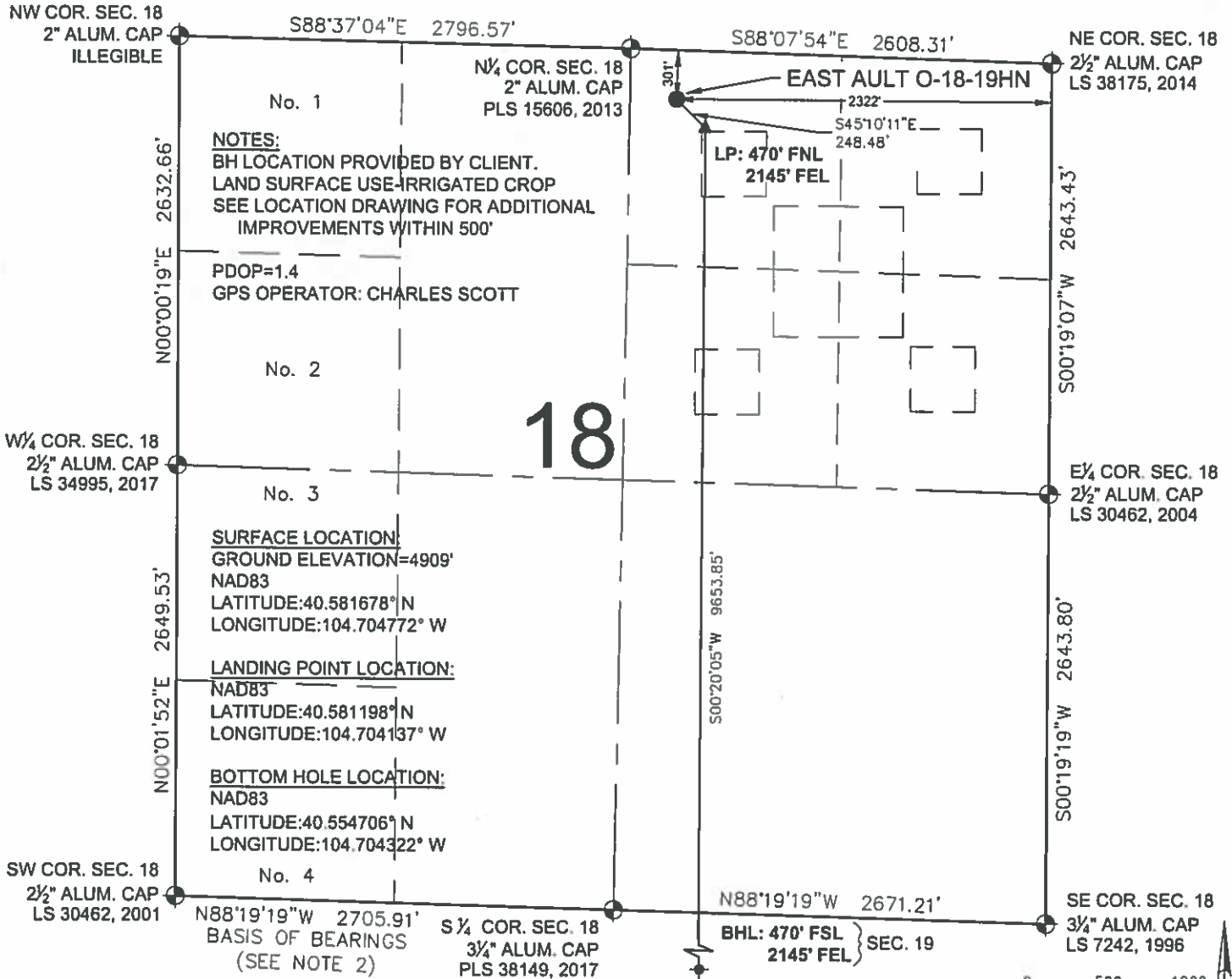


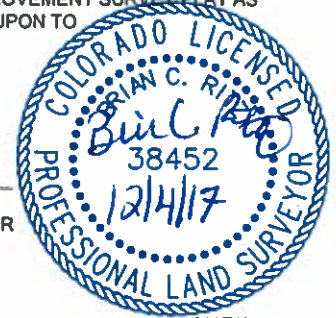
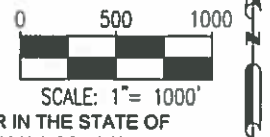
EAST AULT O-18-19HN WELL LOCATION CERTIFICATE



WELL EAST AULT O-18-19HN TO BE LOCATED 301' FNL & 2322' FEL

I, BRIAN C. RITZ, A LICENSED PROFESSIONAL LAND SURVEYOR IN THE STATE OF COLORADO DO HEREBY CERTIFY TO BAYSWATER EXPLORATION & PRODUCTION, LLC, THAT THE SURVEY AND WELL LOCATION CERTIFICATE SHOWN HEREON WERE DONE BY ME OR UNDER MY DIRECT SUPERVISION AND THAT THE DRAWING SHOWN HEREON ACCURATELY DEPICTS THE PROPOSED LOCATION OF THE WELL. THIS CERTIFICATE DOES NOT REPRESENT A LAND SURVEY PLAT OR IMPROVEMENT SURVEY PLAT AS DEFINED BY C.R.S. 38-51-102 AND CANNOT BE RELIED UPON TO DETERMINE OWNERSHIP.

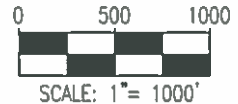
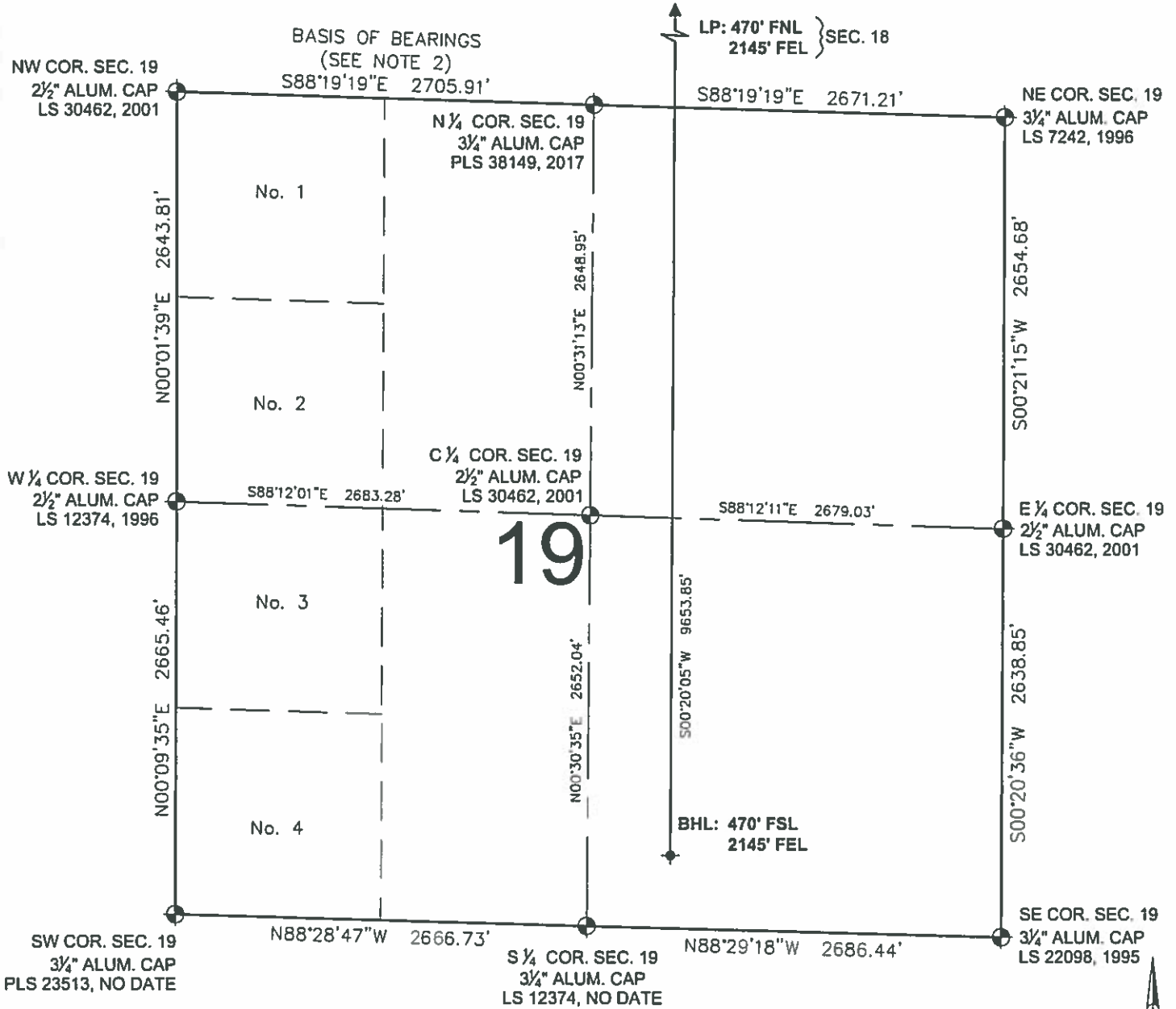
BRIAN C. RITZ, PLS 38452
COLORADO LICENSED PROFESSIONAL LAND SURVEYOR
FOR AND ON BEHALF OF P.F.S., LLC
d.b.a. ASCENT GEOMATICS SOLUTIONS



SHEET 1 OF 2

| | | | |
|---------------------------------------------------------|----------------------------------|-------------------------------------------------------------------------|-----------------------------------------------------------------------------------------|
| ASCENT <small>GEOMATICS SOLUTIONS</small> | FIELD DATE: 10-19-17 | WELL NAME: EAST AULT O-18-19HN | PREPARED FOR: BAYSWATER <small>EXPLORATION AND PRODUCTION, LLC</small> |
| | DRAWING DATE: 11-28-17 | SURFACE LOCATION: NW 1/4 NE 1/4, SEC. 18, T7N, R65W, 6TH P.M. | |
| | BY DP | CHECKED CSG | |

EAST AULT O-18-19HN WELL LOCATION CERTIFICATE



LEGEND

- ⊕ = EXISTING MONUMENT
- = CALCULATED POSITION
- = PROPOSED WELL
- ◆ = EXISTING WELL
- ⬆ = BOTTOM HOLE
- ▲ = LANDING POINT
- LP = LANDING POINT
- BHL = BOTTOM HOLE LOCATION

BRIAN C. RITZ, PLS 38452
COLORADO LICENSED PROFESSIONAL LAND SURVEYOR
FOR AND ON BEHALF OF P.F.S., LLC
d.b.a. ASCENT GEOMATICS SOLUTIONS

SHEET 2 OF 2



7515 Millip Circle
Denver, CO 80221
(303) 928-7128
www.ascentgeomatics.com

FIELD DATE:
10-19-17

DRAWING DATE:
11-28-17

BY:
DP

CHECKED:
CSG

WELL NAME:
EAST AULT O-18-19HN

SURFACE LOCATION:
NW 1/4 NE 1/4, SEC. 18, T7N, R65W, 6TH P.M.
WELD COUNTY, COLORADO

PREPARED FOR:

