

Inspection Photos

Loc#414880

Operator: Caerus

Inspection Number: 680102942

Inspection Date: 5/1/2018



COLORADO
Oil & Gas Conservation
Commission
Department of Natural Resources



Photo#1:
Overview of Location from top of cut slope to Northwest.

May 1, 2018



COLORADO
Oil & Gas Conservation
Commission
Department of Natural Resources

Inspection Photos: Caerus Loc# 414880



Photo#2:
2015 aerial view of Location from COGCC Maps.
Construction was Expansion of an existing location.

May 1, 2018



Photo#3:
2017 aerial view of Location from COGCC Maps.
Disturbed acres to be 12.33. After Interim Rec 1.73



COLORADO
Oil & Gas Conservation
Commission
Department of Natural Resources

Inspection Photos: Caerus Loc# 414880



Photo#4:

Graveled strip at base of cut slope at Southeast corner of site indicates path of french drain that daylights & flows into sediment trap in photos #5 & #6.

May 1, 2018



COLORADO
Oil & Gas Conservation
Commission
Department of Natural Resources

Inspection Photos: Caerus Loc# 414880



Photo#5:
Sediment trap receiving flow from french drain routing Spring water. View to East.

May 1, 2018



COLORADO
Oil & Gas Conservation
Commission
Department of Natural Resources

Inspection Photos: Caerus Loc# 414880



Photo#6:

View to West back over Sediment trap in Photo#5; with French Drain daylight point indicated by arrow.

May 1, 2018



COLORADO
Oil & Gas Conservation
Commission
Department of Natural Resources

Inspection Photos: Caerus Loc# 414880



Photo#7:

Two views of Rocked Drain from Sediment Trap in Photo #6. Water flow under cuts this drain & immediately infiltrates into soil, potentially saturating soils which could further destabilize fill slopes.

May 1, 2018



Photo#8:



COLORADO
Oil & Gas Conservation
Commission
Department of Natural Resources

Inspection Photos: Caerus Loc# 414880



Photo#9:
View along base of fill slope to Southeast corner of Location.

May 1, 2018



COLORADO
Oil & Gas Conservation
Commission
Department of Natural Resources

Inspection Photos: Caerus Loc# 414880



Photo#10:

Outlet point at edge of pad where Bmp drain is sloughing; this drain leads down slope in Photo #11.

May 1, 2018



COLORADO
Oil & Gas Conservation
Commission
Department of Natural Resources

Inspection Photos: Caerus Loc# 414880



Photo#11:

View from pad edge down to base of fill slope. Rocked drain leading from outlet in Photo #10 indicated by arrow.

May 1, 2018



COLORADO
Oil & Gas Conservation
Commission
Department of Natural Resources

Inspection Photos: Caerus Loc# 414880



Photo#12:

View from of Pad edge down to Sediment reservoir at base of unstabilized fill slope.

May 1, 2018



COLORADO
Oil & Gas Conservation
Commission
Department of Natural Resources

Inspection Photos: Caerus Loc# 414880



Photo#13:

View from base of Fill slope up to top of pad, showing unstable conditions.

May 1, 2018



COLORADO
Oil & Gas Conservation
Commission
Department of Natural Resources

Inspection Photos: Caerus Loc# 414880



Photo#14:
View along base of Fill slope

May 1, 2018



COLORADO
Oil & Gas Conservation
Commission
Department of Natural Resources

Inspection Photos: Caerus Loc# 414880



Photo#15:
View of disturbance along base of fill slope

May 1, 2018



COLORADO
Oil & Gas Conservation
Commission
Department of Natural Resources

Inspection Photos: Caerus Loc# 414880



Photo#16:

Sediment deposition at base of fill slope & ineffective, bypassed BMP indicated by arrow.

May 1, 2018



COLORADO
Oil & Gas Conservation
Commission
Department of Natural Resources

Inspection Photos: Caerus Loc# 414880



Photo#17:

Bmp overwhelmed and now being bypassed at base of fill slope.

May 1, 2018



COLORADO
Oil & Gas Conservation
Commission
Department of Natural Resources

Inspection Photos: Caerus Loc# 414880



Photo#18:
Ineffective BMP at base of fill slope.

May 1, 2018

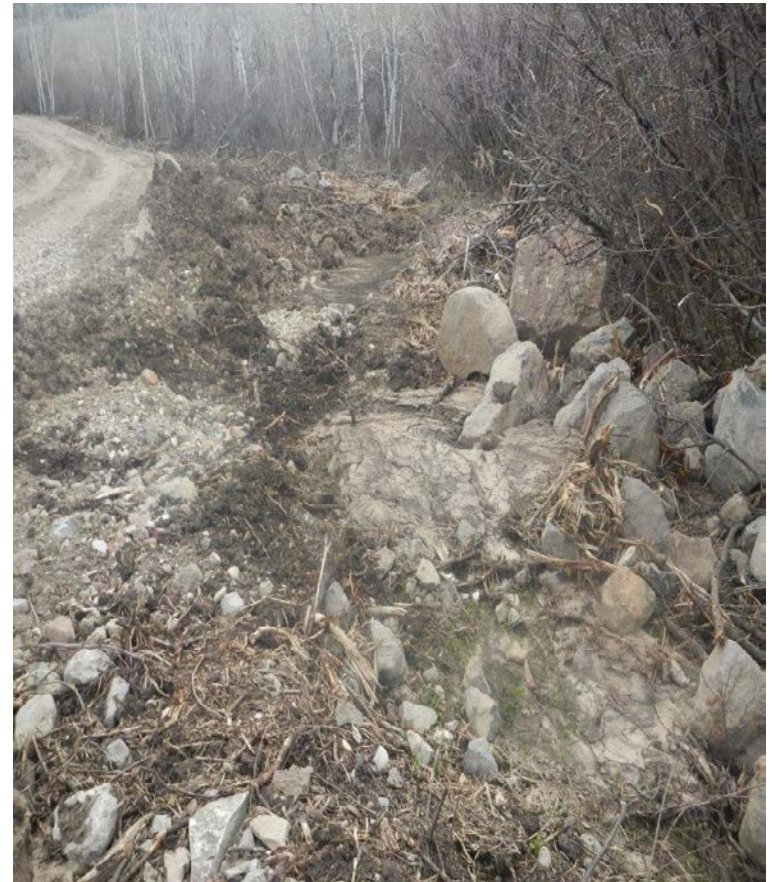


COLORADO
Oil & Gas Conservation
Commission
Department of Natural Resources

Inspection Photos: Caerus Loc# 414880



Photo#19:
View along West side of Access road.



Photo#20:
View along East side of Access road.

May 1, 2018



Photo#21:
Down fencing materials have not been removed.



Photo#22:
Barbed wire has not been rolled up.

May 1, 2018



COLORADO
Oil & Gas Conservation
Commission
Department of Natural Resources

Inspection Photos: Caerus Loc# 414880



Photo#23:

Unused materials have become debris.

May 1, 2018



COLORADO
Oil & Gas Conservation
Commission
Department of Natural Resources

Inspection Photos: Caerus Loc# 414880



Photo#24:
Northern hydro mulched area.



Photo#25:
Southern hydro mulched area.

May 1, 2018



COLORADO
Oil & Gas Conservation
Commission
Department of Natural Resources

Inspection Photos: Caerus Loc# 414880