

Ursa Operating Company LLC
Weinreis Well A-1 Garfield
County, CO

Revision 1



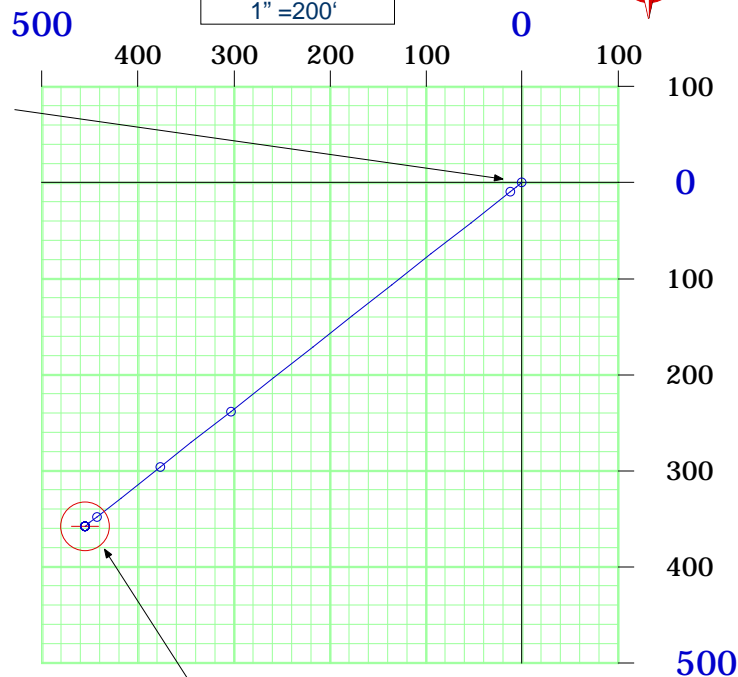
Surface Location
Y=1624307.69'
X=2385898.94'
NAD 83

Target Area
25' Radius

Plane of Proposal
231.8° Azimuth

Vertical Section
1"=2000'

Horizontal Plan
1"=200'



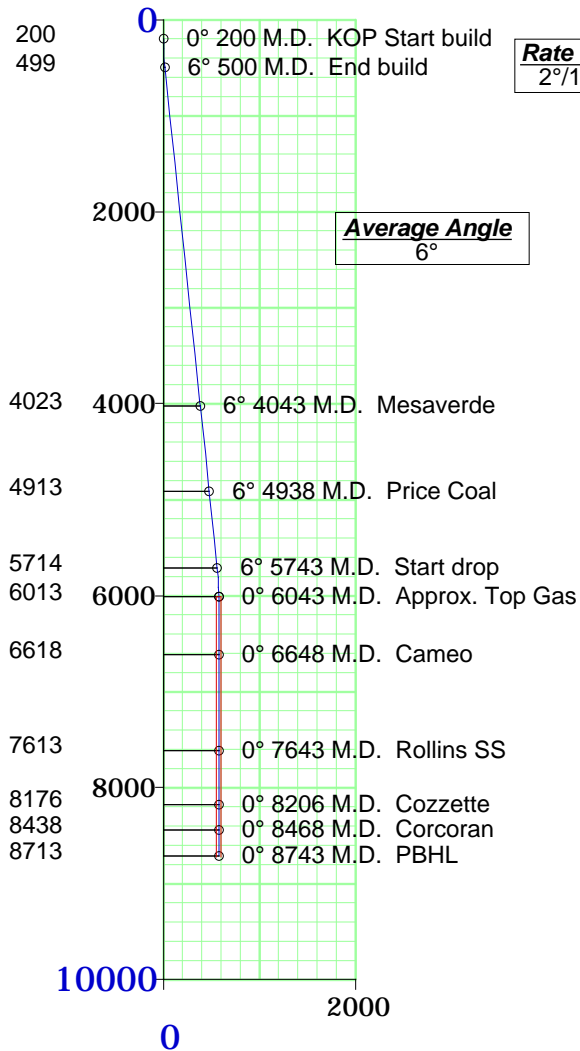
Proposed Target
579.32' Displacement
@ 231.81° Azimuth
South-358.22' West-455.30'
TVD-6013' MD-6043'
Y=1623949.5', X=2385443.6'

Rate of Build
2°/100'MD

Average Angle
6°

Formation	TVD
Mesaverde	4023
Price Coal	4913
Top Gas	6013
Cameo	6618
Rollins SS	7613
Cozzette	8176
Corcoran	8438
TD	8713

Rate of Drop
2°/100'MD





Minimum of Curvature
Slot Location: 1624307.69', 2385898.94'
Plane of Vertical Section: 231.81°

[illegible]

Measured Depth Feet	BORE Inc Degrees	HOLE Direction Degrees	True Vertical Depth Feet	RECTANGULAR COORDINATES		LAMBERT COORDINATES		Vertical Section Feet	CLOSURES		Dogleg Severity Deg/100'
				North(-South)	East(-West)	Y	X		Distance	Direction	
				Feet	Feet	Feet	Feet		Feet	Deg	
8205.80	0.00	231.81	8176.00	-358.22	-455.30	1623949.5	2385443.6	579.32	579.32	231.81	0.00
Cozzette											
8467.80	0.00	231.81	8438.00	-358.22	-455.30	1623949.5	2385443.6	579.32	579.32	231.81	0.00
Corcoran											
8742.80	0.00	231.81	8713.00	-358.22	-455.30	1623949.5	2385443.6	579.32	579.32	231.81	0.00
PBHL											
Final Station Closure Distance: 579.32' Direction: 231.81°											