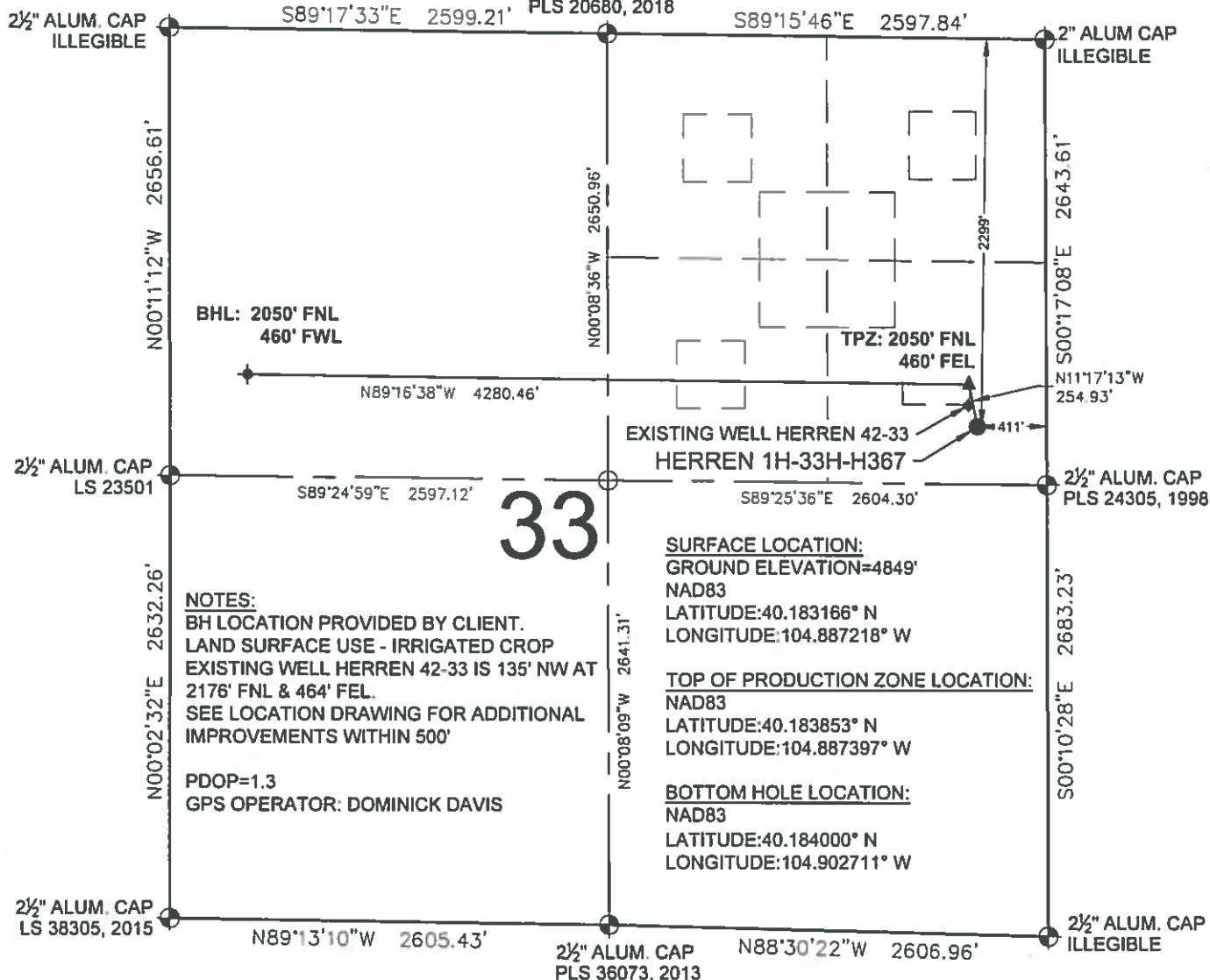


HERREN 1H-33H-H367 WELL LOCATION EXHIBIT

2 1/2" ALUM. CAP
PLS 20680, 2018



33

NOTES:
BH LOCATION PROVIDED BY CLIENT.
LAND SURFACE USE - IRRIGATED CROP
EXISTING WELL HERREN 42-33 IS 135' NW AT
2176' FNL & 464' FEL.
SEE LOCATION DRAWING FOR ADDITIONAL
IMPROVEMENTS WITHIN 500'

PDOP=1.3
GPS OPERATOR: DOMINICK DAVIS

SURFACE LOCATION:
GROUND ELEVATION=4849'
NAD83
LATITUDE:40.183166° N
LONGITUDE:104.887218° W

TOP OF PRODUCTION ZONE LOCATION:
NAD83
LATITUDE:40.183853° N
LONGITUDE:104.887397° W

BOTTOM HOLE LOCATION:
NAD83
LATITUDE:40.184000° N
LONGITUDE:104.902711° W

LEGEND

- = EXISTING MONUMENT
- = CALCULATED POSITION
- ◆ = PROPOSED WELL
- ◆ = EXISTING WELL
- ▲ = BOTTOM HOLE
- ▲ = TOP OF PRODUCTION ZONE
- TPZ = TOP OF PRODUCTION ZONE
- BHL = BOTTOM HOLE LOCATION

NOTES:

- THIS FIELD SURVEY CONFORMS TO THE MINIMUM STANDARDS SET BY THE C.O.G.C., RULE NO. 215
- ALL DISTANCES AND BEARINGS SHOWN HEREON ARE GROUND VALUES AS MEASURED IN THE FIELD, WITH TIES TO WELLS MEASURED PERPENDICULAR TO LINES SHOWN HEREON. THIS LOW DISTORTION PROJECTION (LDP) IS BASED ON THE NORTH AMERICAN DATUM OF 1983, U.S. SURVEY FOOT WITH A LATITUDE ORIGIN OF 40.218478°N, A CENTRAL MERIDIAN LONGITUDE OF 104.886099°W, AND A SCALE FACTOR ON THE CENTRAL MERIDIAN OF 1.000227 (EXACT). THE LDP BASIS OF BEARINGS IS GEODETIC NORTH.
- FIELD VERIFICATION OF MONUMENTS COMPLETED WITHIN 1 YEAR OF SIGNATURE DATE, UNLESS OTHERWISE NOTED.



WELL HERREN 1H-33H-H367 TO BE LOCATED 2299' FNL & 411' FEL

I, ROBERT J. GUFFEY, A LICENSED PROFESSIONAL LAND SURVEYOR IN THE STATE OF COLORADO, DO HEREBY STATE TO CRESTONE PEAK RESOURCES THAT THE WELL LOCATION EXHIBIT SHOWN HEREON WAS PREPARED BY ME OR UNDER MY DIRECT SUPERVISION AND THE DRAWING SHOWN HEREON ACCURATELY DEPICTS THE PROPOSED LOCATION OF THE WELL. THIS EXHIBIT MEETS THE REQUIREMENTS OF A GIS LAND POSITION AS DEFINED BY SECTION 38-51-102 (7.5) C.R.S. AND AS SUCH PER SECTION 38-51-109.3 C.R.S. CANNOT BE RELIED UPON TO DETERMINE OWNERSHIP.

ROBERT J. GUFFEY, PLS 20680
COLORADO LICENSED PROFESSIONAL LAND SURVEYOR
FOR AND ON BEHALF OF P.F.S., LLC
d b a. ASCENT GEOMATICS SOLUTIONS



SHEET 1 OF 1

 <p>2335 Hilltop Circle Denver, CO 80221 (303) 928-7128 www.ascentgeomatics.com</p>	FIELD DATE: 02-13-18	WELL NAME: HERREN 1H-33H-H367	PREPARED FOR:  <p>CRESTONE PEAK RESOURCES</p>
	DRAWING DATE: 03-15-18	SURFACE LOCATION: SE 1/4 NE 1/4 SEC. 33, T3N, R67W, 6TH P.M. WELD COUNTY, COLORADO	