

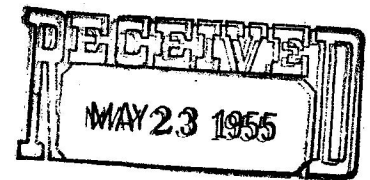
OGCC



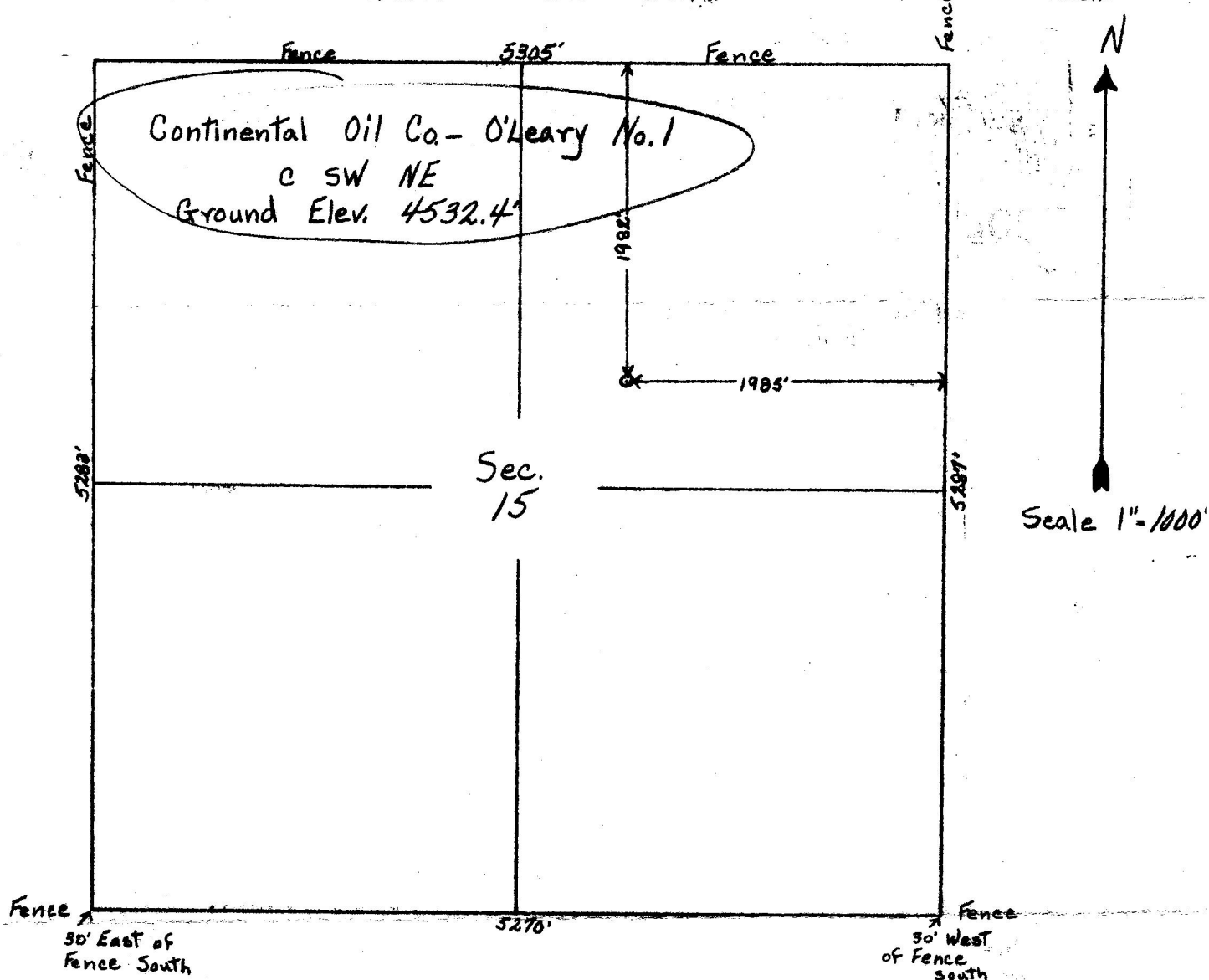
99999999

CERTIFICATE OF SURVEY
for
Continental Oil Co.

08705746
T2N R58W 6PM.



OIL & GAS
CONSERVATION COMMISSION



I hereby certify that the above plat is an accurate representation of a correct survey showing the location of Continental Oil Co. - O'Leary No. 1 Oilwell located in the CSW NE 1/4 Sec. 15 T2N R58W 6 PM. The elevation of the ground at the stake is 4532.4 feet above sea level from B.S.C. & G. Bench Mark.

Fort Morgan, Colorado
May 16, 1955

Registered Professional Engineer
State of Colorado



00105295