

Inspection Photos

Loc#449874

Operator: Laramie Energy

Inspection Number: 680102913

Inspection Date: 4/18/2018



COLORADO
Oil & Gas Conservation
Commission
Department of Natural Resources



Photo#1:
Overview of Location to Northeast.

April 18, 2018



COLORADO
Oil & Gas Conservation
Commission
Department of Natural Resources

Inspection Photos: Laramie Loc#449874



Photo#2:
View to NE of eroding cut slope.

April 18, 2018

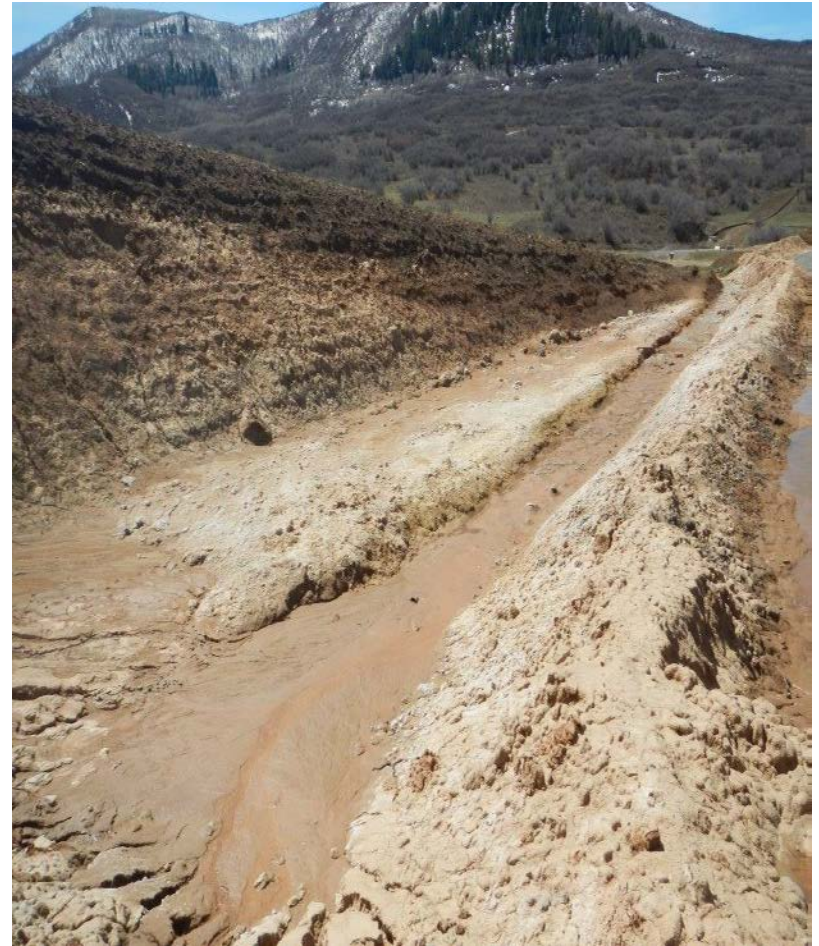


Photo #3:
View SW of sediment migrating from base of cut slope.



Photo#4:

Close up view of sediment retention area and drain ditch at base of cut slope.

April 18, 2018



COLORADO
Oil & Gas Conservation
Commission
Department of Natural Resources

Inspection Photos: Laramie Loc#449874



Photo#5:
BMP outlet / discharge leading from eroding cut slope, showing sediment migration..
April 18, 2018



Photo#6:



COLORADO
Oil & Gas Conservation
Commission
Department of Natural Resources

Inspection Photos: Laramie Loc#449874



Photo#7:

Photo#8:

Topsoil is not stabilized, has the potential for degradation due to mixing with subsoil and wind/water erosion.

April 18, 2018



Photo#9:

Area at top of cut slope where cuttings have been piled & are mixing with topsoil.

Photo#10:

April 18, 2018



COLORADO
Oil & Gas Conservation
Commission
Department of Natural Resources

Inspection Photos: Laramie Loc#449874