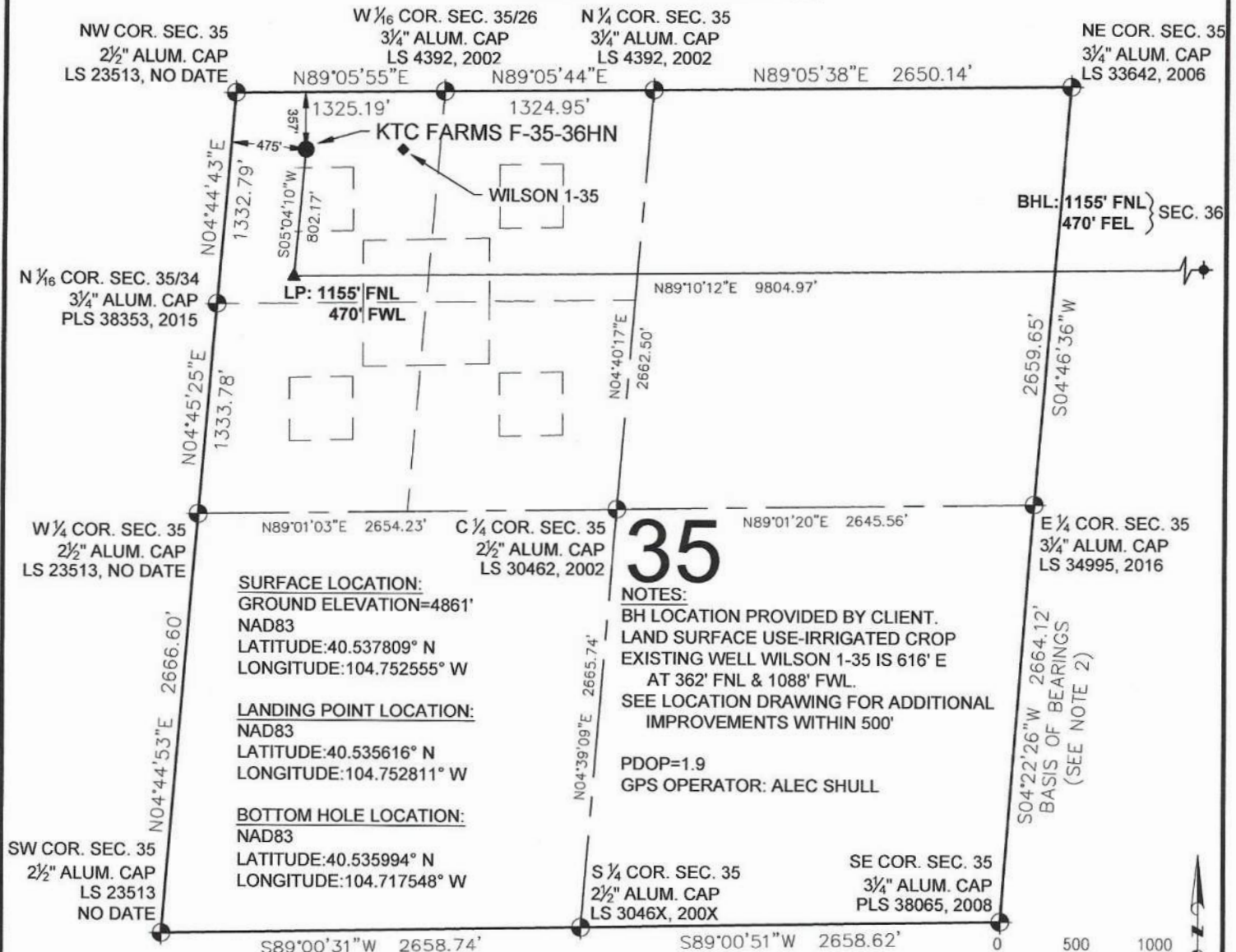


KTC FARMS F-35-36HN WELL LOCATION CERTIFICATE



WELL KTC FARMS F-35-36HN TO BE LOCATED 357' FNL & 475' FWL

I, BRIAN C. RITZ, A LICENSED PROFESSIONAL LAND SURVEYOR IN THE STATE OF COLORADO DO HEREBY CERTIFY TO **BAYSWATER EXPLORATION & PRODUCTION, LLC** THAT THE SURVEY AND WELL LOCATION CERTIFICATE SHOWN HEREON WERE DONE BY ME OR UNDER MY DIRECT SUPERVISION AND THAT THE DRAWING SHOWN HEREON ACCURATELY DEPICTS THE PROPOSED LOCATION OF THE WELL. THIS CERTIFICATE DOES NOT REPRESENT A LAND SURVEY PLAT OR IMPROVEMENT SURVEY PLAT AS DEFINED BY C.R.S. 38-51-102 AND CANNOT BE RELIED UPON TO DETERMINE OWNERSHIP.

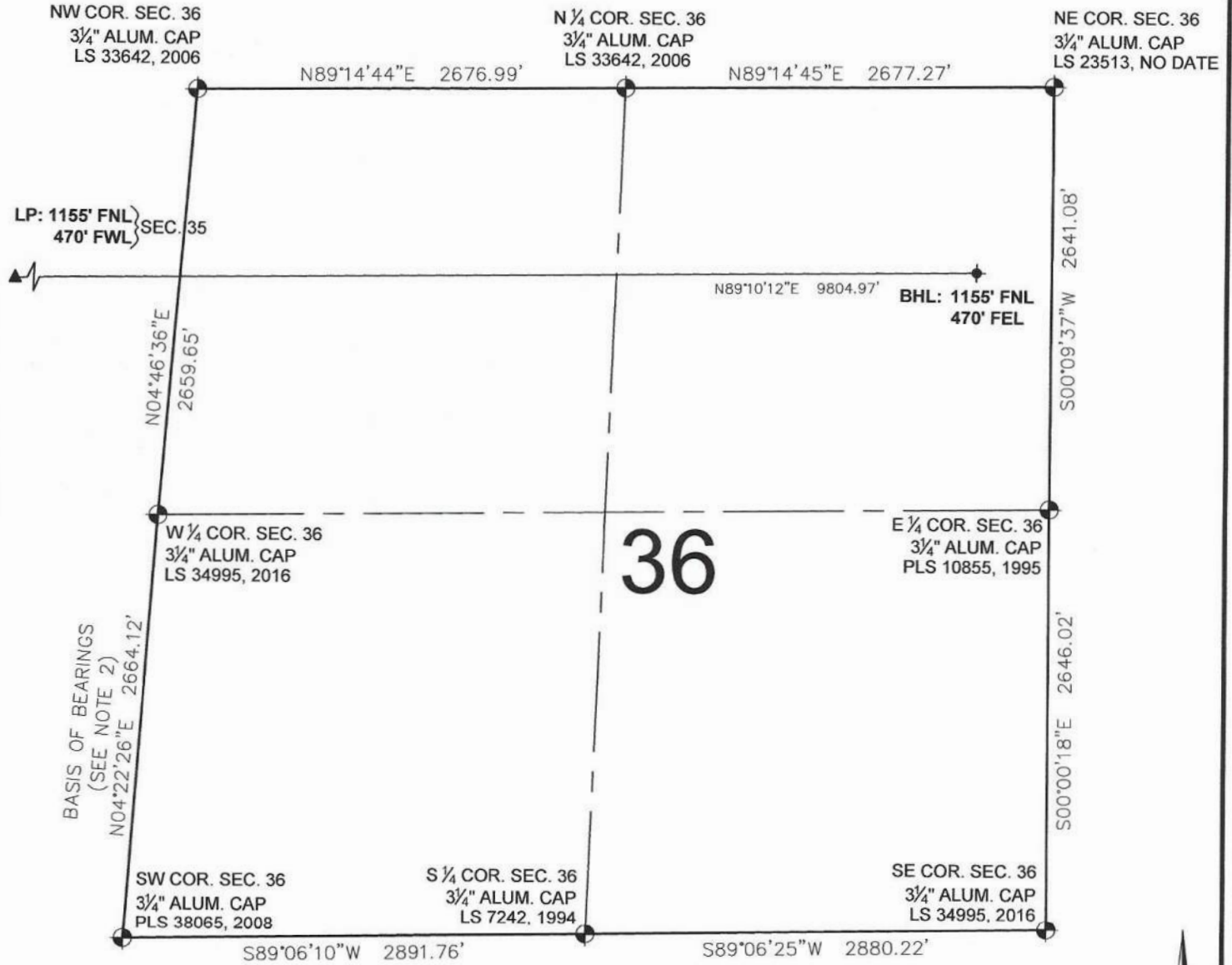
BRIAN C. RITZ, PLS 38452
 COLORADO LICENSED PROFESSIONAL LAND SURVEYOR
 FOR AND ON BEHALF OF P.F.S., LLC
 d.b.a. ASCENT GEOMATICS SOLUTIONS



SHEET 1 OF 2

<p>7535 Hilltop Circle Denver, CO 80221 (303) 928-7128 www.ascentgeomatics.com</p>	FIELD DATE: 06-01-17	WELL NAME: KTC FARMS F-35-36HN	PREPARED FOR: <p>BAYSWATER EXPLORATION AND PRODUCTION, LLC</p>
	DRAWING DATE: 11-09-17	SURFACE LOCATION: NW 1/4 NW 1/4, SEC. 35, T7N, R66W, 6TH P.M. WELD COUNTY, COLORADO	
BY: DP	CHECKED: WDW		

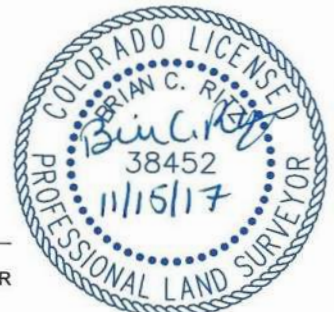
KTC FARMS F-35-36HN WELL LOCATION CERTIFICATE



LEGEND

- = EXISTING MONUMENT
- = CALCULATED POSITION
- = PROPOSED WELL
- ◆ = EXISTING WELL
- ◆ = BOTTOM HOLE
- ▲ = LANDING POINT
- LP = LANDING POINT
- BHL = BOTTOM HOLE LOCATION

BRIAN C. RITZ, PLS 38452
COLORADO LICENSED PROFESSIONAL LAND SURVEYOR
FOR AND ON BEHALF OF P.F.S., LLC
d.b.a. ASCENT GEOMATICS SOLUTIONS



SHEET 2 OF 2



7535 Hilltop Circle
Denver, CO 80221
(303) 928-7128
www.ascentgeomatics.com

FIELD DATE:
06-01-17

DRAWING DATE:
11-09-17

BY:
DP

CHECKED:
WDW

WELL NAME:
KTC FARMS F-35-36HN

SURFACE LOCATION:
NW 1/4 NW 1/4, SEC. 35, T7N, R66W, 6TH P.M.
WELD COUNTY, COLORADO

PREPARED FOR:

BAYSWATER
EXPLORATION AND PRODUCTION, LLC