



FILE NO: CH133068	COMPANY LARAMIE ERNGY LLC
API NO: 05077104690000	WELL BRUTON FEDERAL 30-19W
	FIELD VEGA
	COUNTY MESA STATE COLORADO

Ver. 4.10	LOCATION: SHL: 2622' FSL & 1858' FEL BHL: 658' FSL & 1306' FWL SEC <u>30</u> TWP <u>9S</u> RGE <u>93W</u>	OTHER SERVICES RAL
-----------	--	-----------------------

PERMANENT DATUM LOG MEASURED FROM DRILL. MEAS. FROM	GL KB KB KB	ELEVATION 7643 FT 30 FT ABOVE P.D.	ELEVATIONS: KB 7673 FT DF GL 7643 FT
---	----------------------	---	---

DATE	11-Apr-2018
RUN	2
TRIP	2
SERVICE ORDER	US133068
DEPTH DRILLER	8324 FT
DEPTH LOGGER	8289 FT
BOTTOM LOGGED INTERVAL	8289 FT
TOP LOGGED INTERVAL	2660 FT
TIME STARTED	14:00
TIME FINISHED	21:00
OPERATOR RIG TIME	7 HRS
TYPE OF FLUID IN HOLE	WATER
FLUID DENSITY	NA
FLUID SALINITY	NA
FLUID LEVEL	54 FT
LOGGED CEMENT TOP	1800 FT
WELLHEAD PRESSURE	0 PSI
MAXIMUM HOLE DEVIATION	NA
NOMINAL LOGGING SPEED	15 FMIN
MAX. RECORDED TEMP.	226 DEGF
REFERENCE LOG	BAKER HUGHES RAL
REFERENCE LOG DATE	01-Apr-2018
EQUIP. NO.	ML-4291
LOCATION	GRAND JCT.
RECORDED BY	M. BAUKA
WITNESSED BY	NA

IN MAKING INTERPRETATIONS OF LOGS OUR EMPLOYEES WILL GIVE THE CUSTOMER THE BENEFIT OF THEIR BEST JUDGEMENT. BUT SINCE ALL INTERPRETATIONS ARE OPINIONS BASED ON INFERENCES FROM ELECTRICAL OR OTHER MEASUREMENTS, WE CANNOT, AND WE DO NOT GUARANTEE THE ACCURACY OR CORRECTNESS OF ANY INTERPRETATION. WE SHALL NOT BE LIABLE OR RESPONSIBLE FOR ANY LOSS, COST, DAMAGES, OR EXPENSES WHATSOEVER INCURRED OR SUSTAINED BY THE CUSTOMER RESULTING FROM ANY INTERPRETATION MADE BY ANY OF OUR EMPLOYEES.

REMARKS

RUN 2 TRIP 2: *2 OPERATIONS IN WELLBORE*

OPERATION 1: RPM/GR/CCL RUN IN PNC-3D

SJ: 6274' - 6293'

SJ: 7414' - 7423'

EQUIPMENT DATA

RUN	TRIP	TOOL	SERIES NO.	SERIAL NO.	POSITION
2	2	PCM	8250EA	11745584	FREE
2	2	TEL/CCL	8248ED	10183585	FREE
2	2	GR	8262XA	10196540	FREE
2	2	RPM	8281EA	10294755	FREE
2	2	RPM	8283PA	10066691	FREE
2	2	RPM	8281FA	10066992	FREE
2	2	TEMP	8255XA	166341	FREE

RPM MAIN PASS G-SAND

ECLIPS 7.0i ECLIPS General Release Rel 7.0i Thu Jun 08 20:36:10 CDT 2017

Patches: 3

Plotted: Wed Apr 11 22:45:52 2018

PARAMETER AND FILTER SUMMARY REPORT

FILE: /dat1a/LARAMIE_BRUTON_30_19W/p353h04.prm
 LOGGING MODE: DEPTH DIRECTION: UP
 TOP DEPTH: 2632.602 ft BOTTOM DEPTH: 3342.914 ft

SYMMETRIC FILTER

MEASUREMENT TYPE	PARAMETER	VALUE	UNITS	INTERVAL (ft)
GR	FILTER ()	medium (1)		TOP BOTTOM

RPM PROCESSING

MEASUREMENT TYPE	PARAMETER	VALUE	UNITS	INTERVAL (ft)
PNC Parameters	BOREHOLE CONTENTS	FLUID		TOP BOTTOM
	OPEN/CASED HOLE	CASED HOLE		" "
	BOREHOLE SIZE	7.87	in	" "
	LARGEST CASING OD	4.50	in	" "
	MATRIX	SANDSTONE		" "

CURVE DESCRIPTION REPORT

CURVE NAME	CREATION DATE	CURVE DESCRIPTION
F1:CCL	N/A	CASING COLLAR LOCATOR
F1:GR	N/A	GAMMA RAY
F1:ISS	N/A	INELASTIC SHORT SPACE COUNT RATE
F1:LS	N/A	LONG SPACE COUNT RATE
F1:RATO	N/A	SHORT/LONG SPACE COUNT RATE RATIO
F1:RICS	N/A	SHORT SPACE INELASTIC TO CAPTURE COUNT RATE RATIO (ISS/CSS)
F1:SGFC	N/A	BOREHOLE AND DIFFUSION CORRECTED SIGMA
F1:SS	N/A	SHORT SPACE COUNT RATE

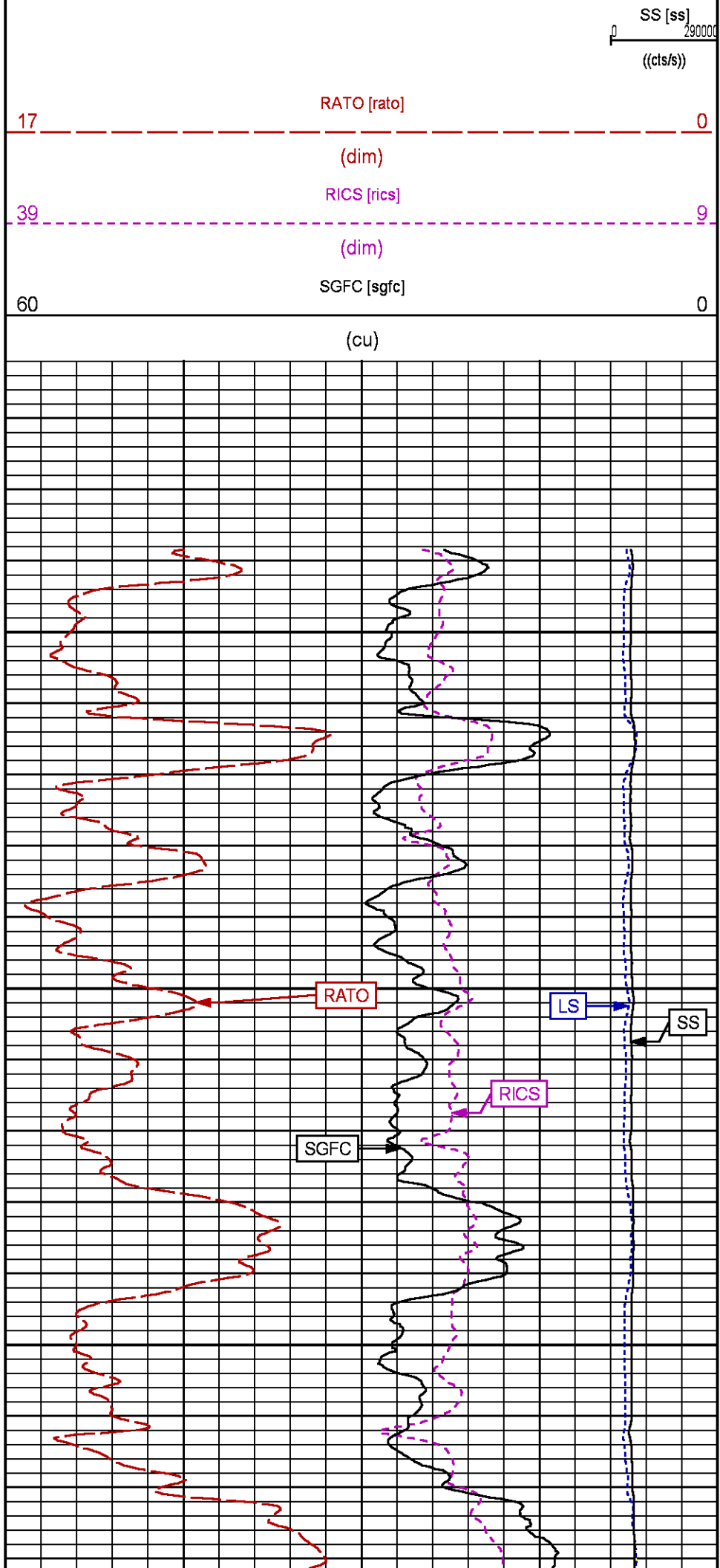
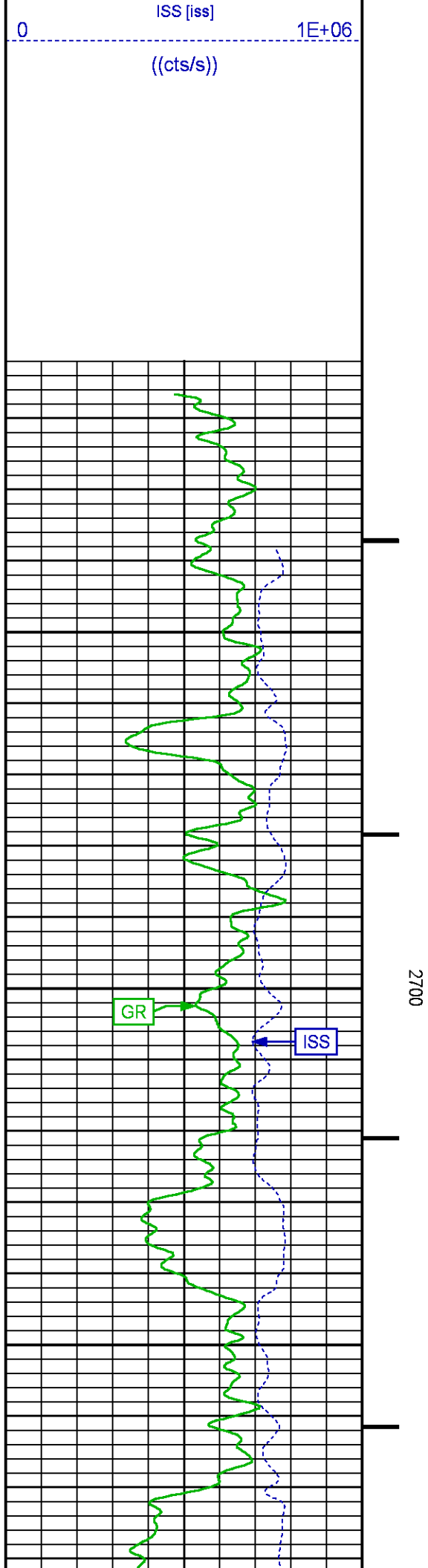
CURVE MEASURE POINT OFFSET

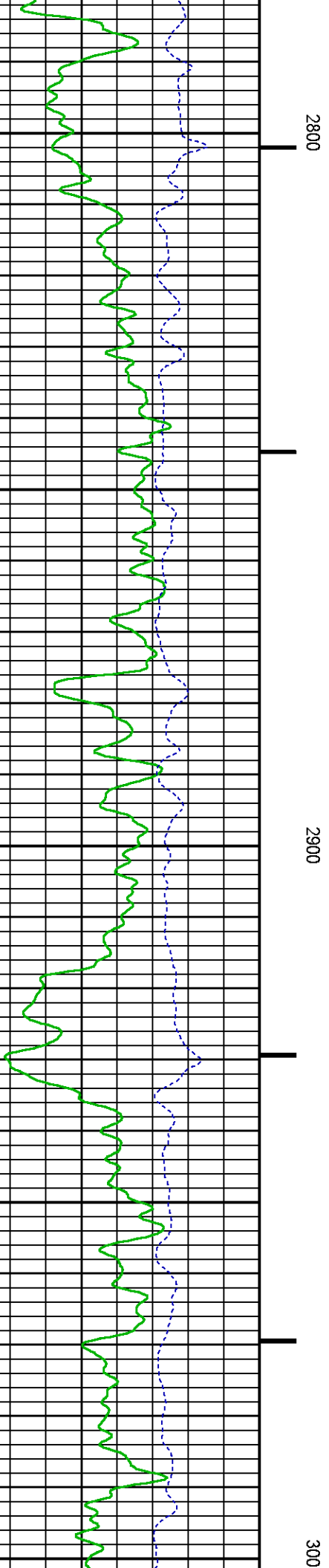
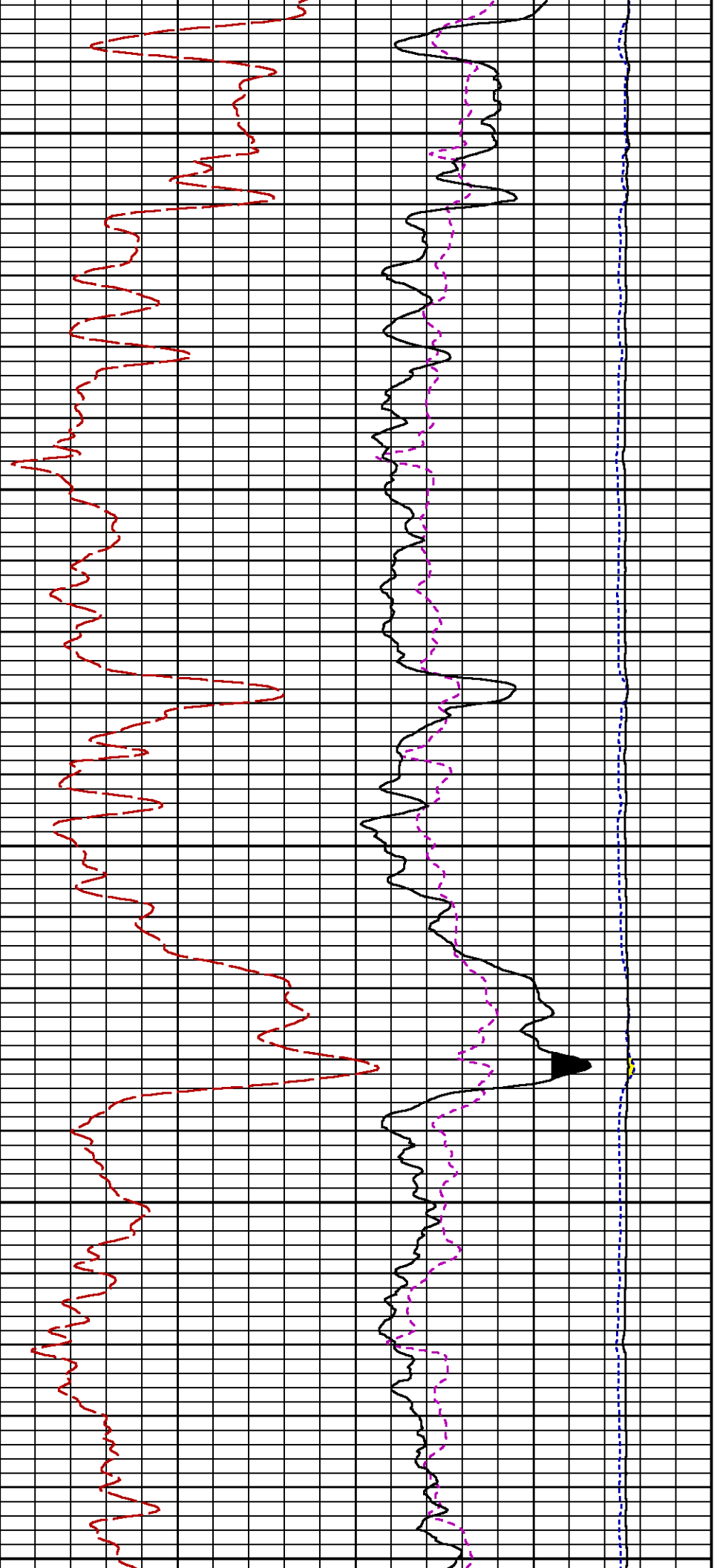
CURVE	OFFSET (ft)	CURVE	OFFSET (ft)	CURVE	OFFSET (ft)	CURVE	OFFSET (ft)
CCL	-26.00	ISS	-12.75	RATO	-12.75	SGFC	-12.75
GR	-23.00	LS	-12.75	RICS	-12.75	SS	-12.75

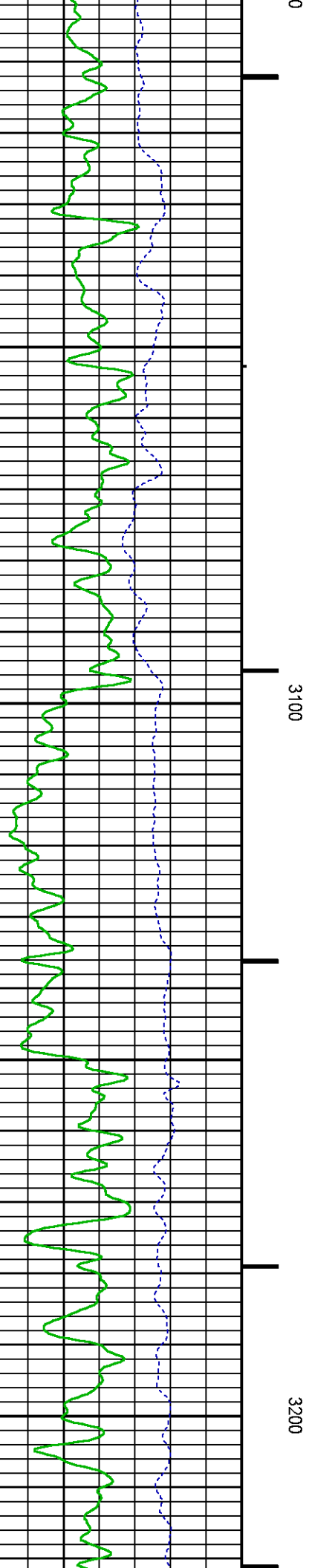
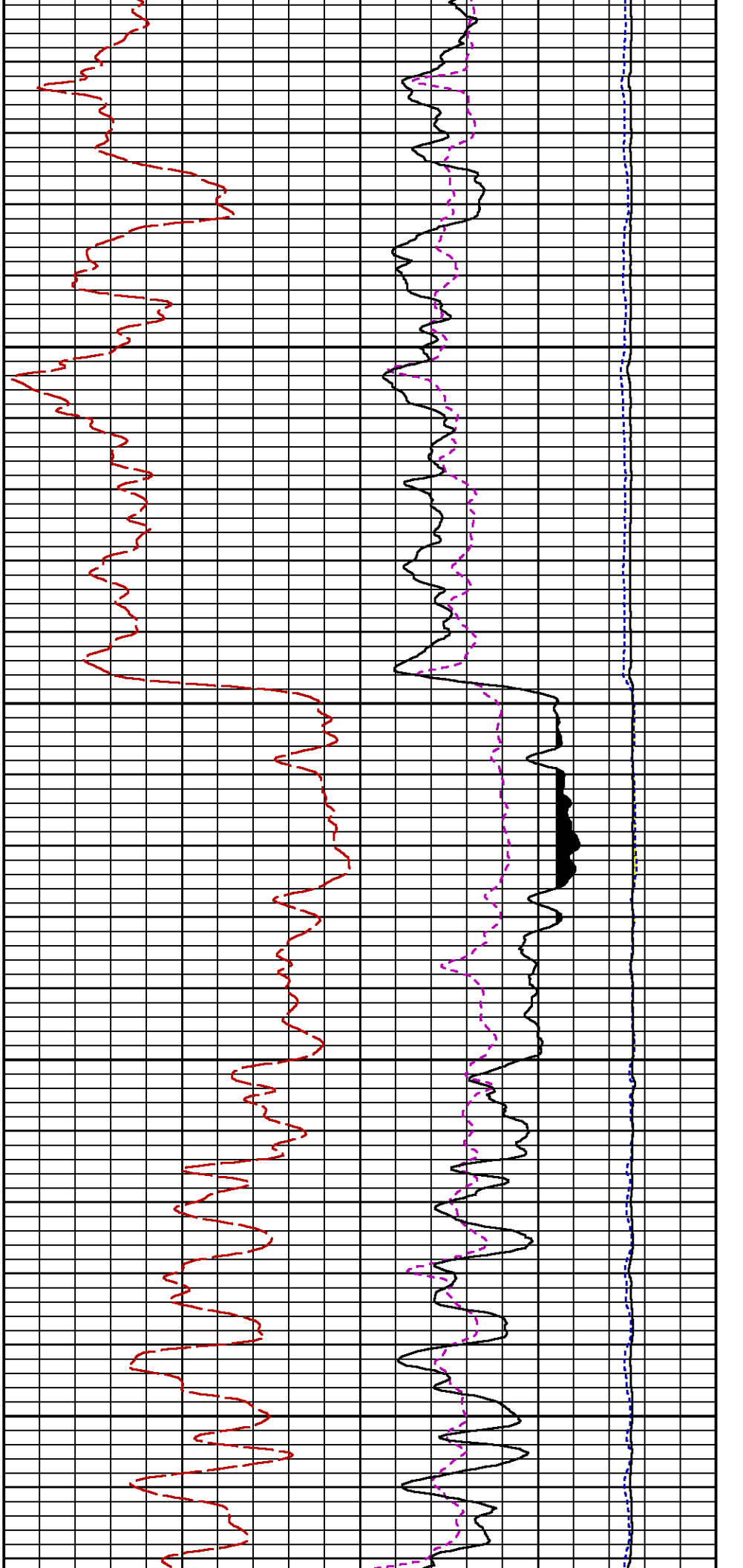
Presentation : SysA:/dat1a/LARAMIE_BRUTON_30_19W/30-19W_RPM_MAIN_GS.fvpdf [5"/100' Scale]
 Plot Interval : 2612.5 - 3344 Feet

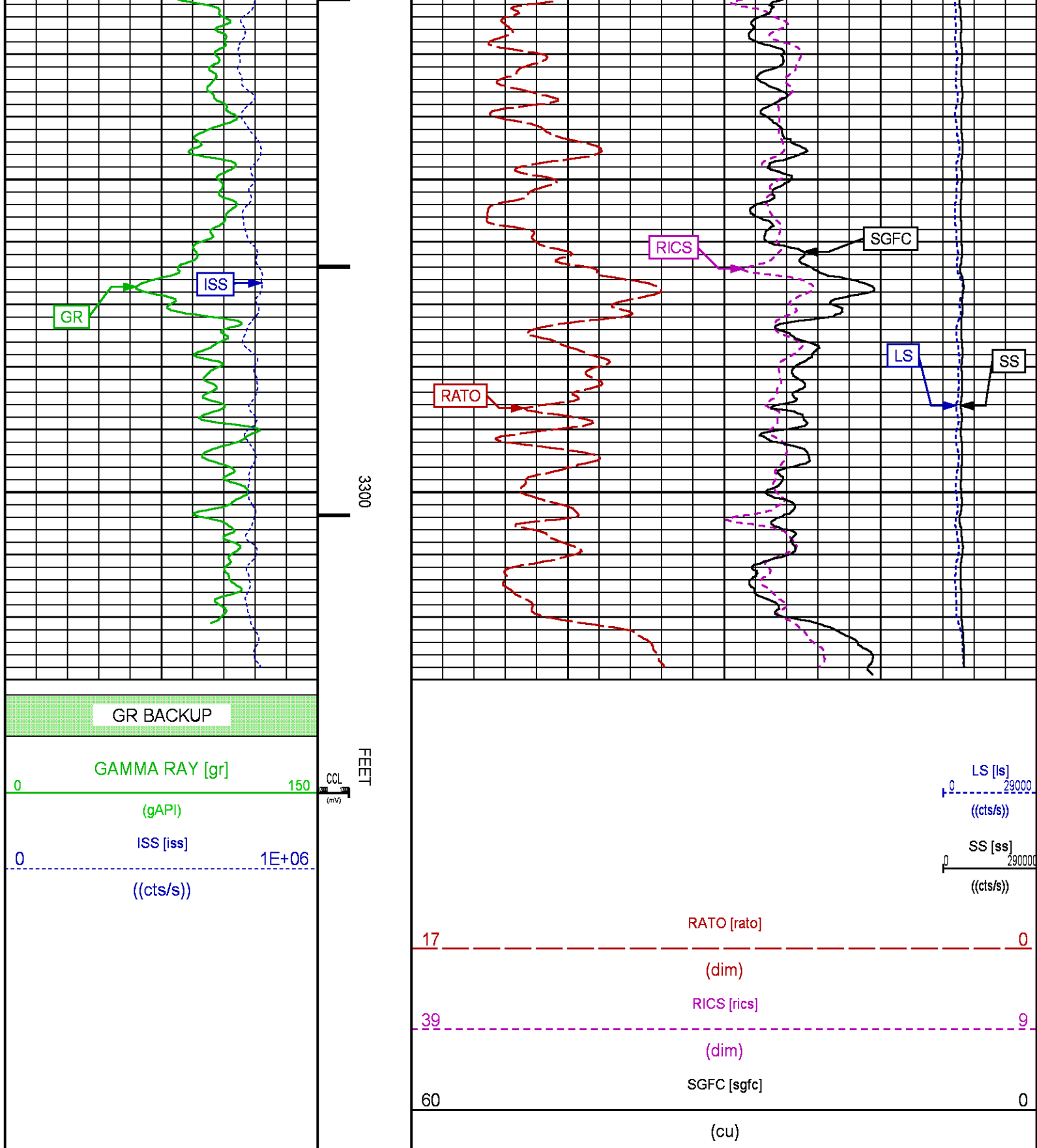
Data File 1 : F1 : SysA:/dat1a/LARAMIE_BRUTON_30_19W/30-19W_RPM_MAIN_GS.xtf
 Created On : N/A
 Company : LARAMIE ERNGY LLC
 Well : BRUTON FEDERAL 30-19W
 Field : VEGA
 File Interval : 2611.75 - 3344.25 Feet
 OCT : p353h











RPM MAIN PASS WILLIAMS FORK

Plotted: Wed Apr 11 22:41:55 2018

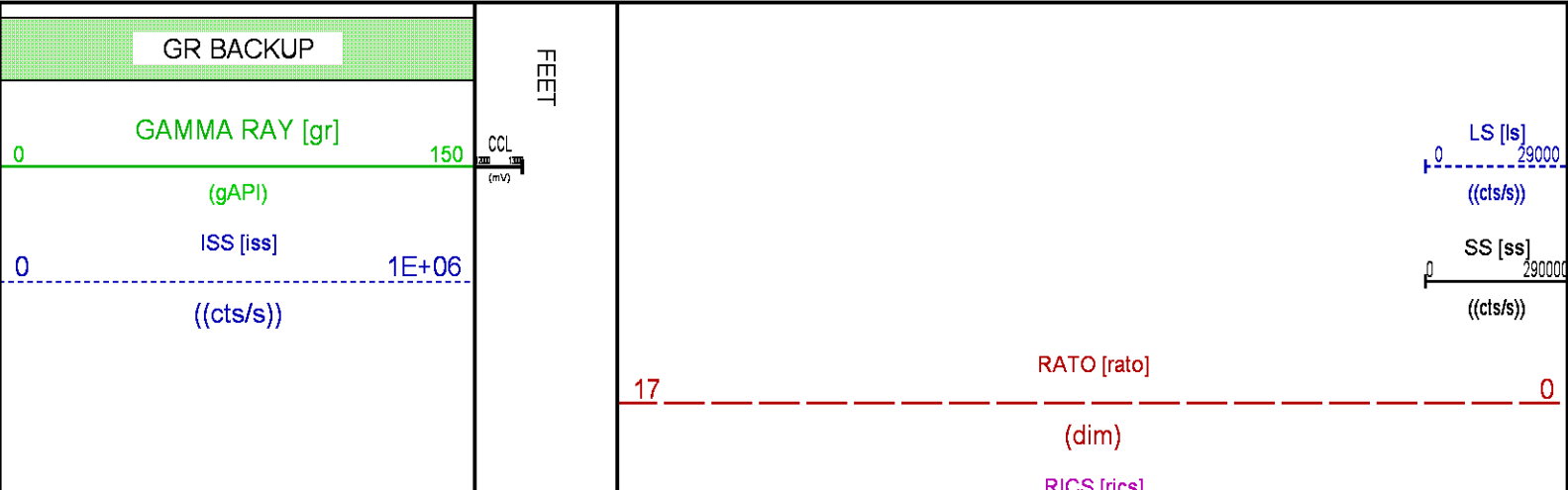
PARAMETER AND FILTER SUMMARY REPORT				
FILE: /dat1a/LARAMIE_BRUTON_30_19W/p353h02.prm LOGGING MODE: DEPTH DIRECTION: UP TOP DEPTH: 6214.750 ft BOTTOM DEPTH: 8289.624 ft				
SYMMETRIC FILTER				
MEASUREMENT TYPE	PARAMETER	VALUE	UNITS	INTERVAL (ft)
GR	FILTER ()	medium (1)		TOP BOTTOM
RPM PROCESSING				
MEASUREMENT TYPE	PARAMETER	VALUE	UNITS	INTERVAL (ft)
PNC Parameters	BOREHOLE CONTENTS	FLUID		TOP BOTTOM
	OPEN/CASED HOLE	CASED HOLE		" "
	BOREHOLE SIZE	7.87	in	" "
	LARGEST CASING OD	4.50	in	" "
	MATRIX	SANDSTONE		" "

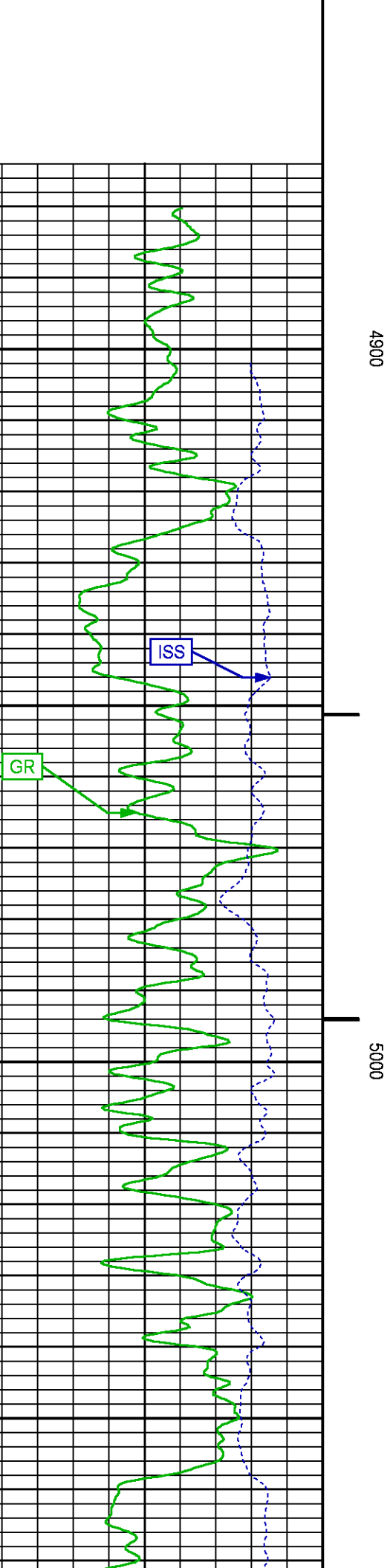
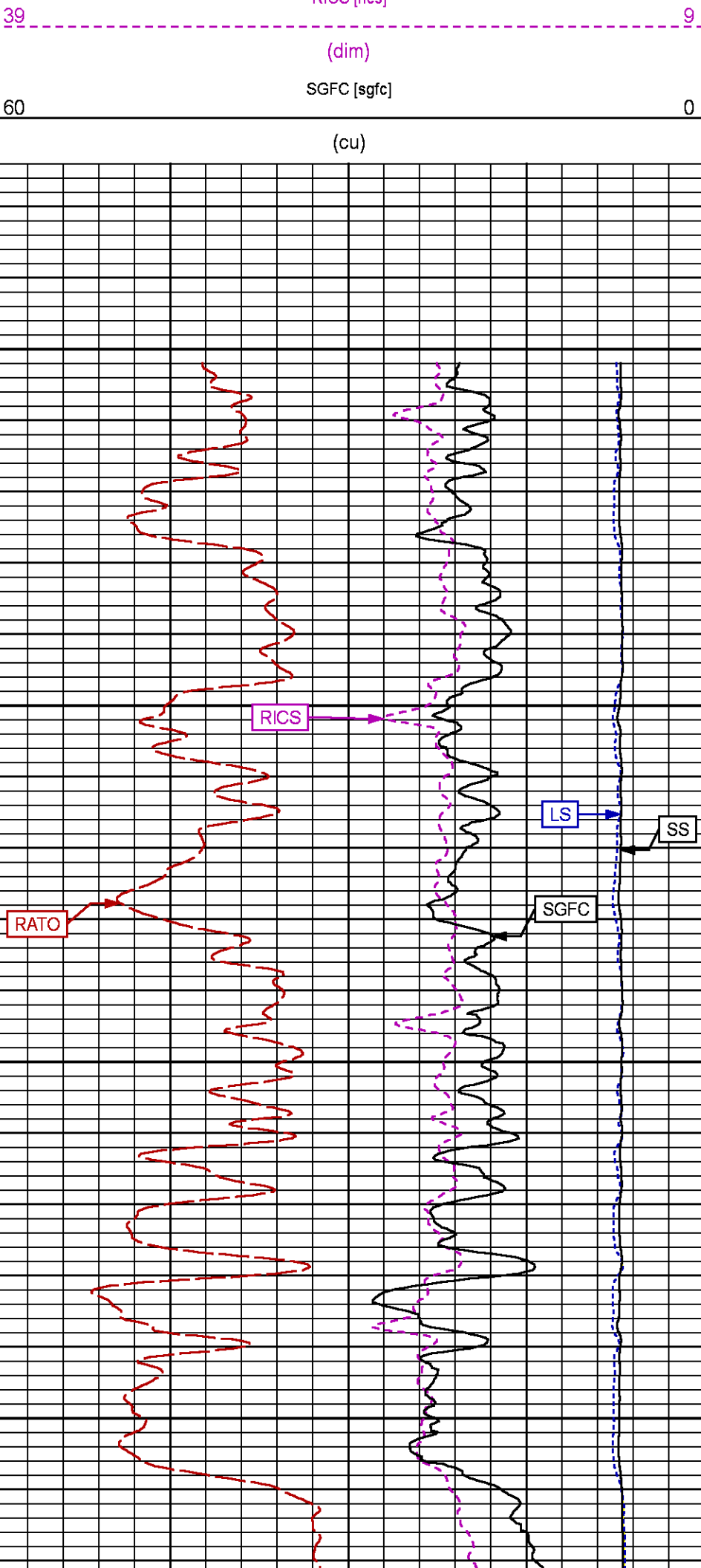
CURVE DESCRIPTION REPORT		
CURVE NAME	CREATION DATE	CURVE DESCRIPTION
F1:CCL	N/A	CASING COLLAR LOCATOR
F1:GR	N/A	GAMMA RAY
F1:ISS	N/A	INELASTIC SHORT SPACE COUNT RATE
F1:LS	N/A	LONG SPACE COUNT RATE
F1:RATO	N/A	SHORT/LONG SPACE COUNT RATE RATIO
F1:RICS	N/A	SHORT SPACE INELASTIC TO CAPTURE COUNT RATE RATIO (ISS/CSS)
F1:SGFC	N/A	BOREHOLE AND DIFFUSION CORRECTED SIGMA
F1:SS	N/A	SHORT SPACE COUNT RATE

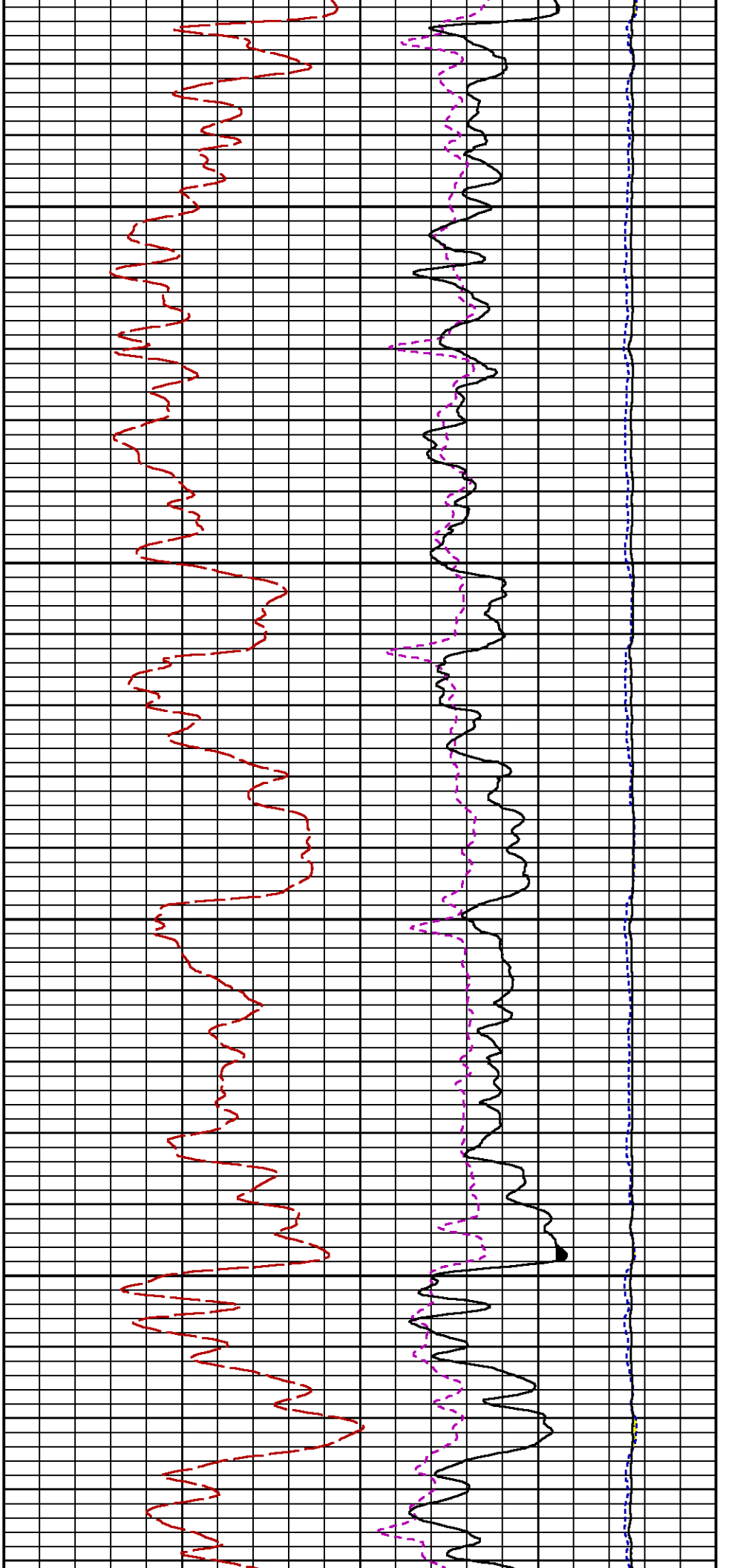
CURVE MEASURE POINT OFFSET					
CURVE	OFFSET (ft)	CURVE	OFFSET (ft)	CURVE	OFFSET (ft)
CCL	-26.00	ISS	-12.75	RATO	-12.75
GR	-23.00	LS	-12.75	RICS	-12.75

Presentation : SysA:/dat1a/LARAMIE_BRUTON_30_19W/30-19W_RPM_MAIN_WF.fvpdf [5"/100" Scale]
Plot Interval : 4875.25 - 8299 Feet

Data File 1 : F1 : SysA:/dat1a/LARAMIE_BRUTON_30_19W/30-19W_RPM_MAIN_WF.xtf
Created On : N/A
Company : LARAMIE ERNGY LLC
Well : BRUTON FEDERAL 30-19W
Field : VEGA
File Interval : 4875.25 - 8291 Feet
OCT : p353h

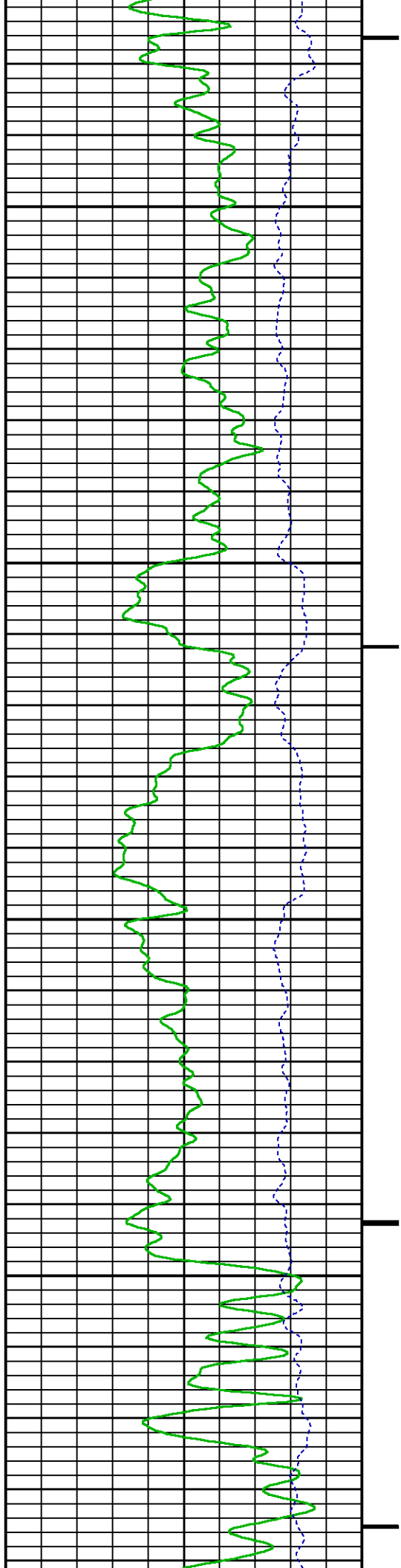


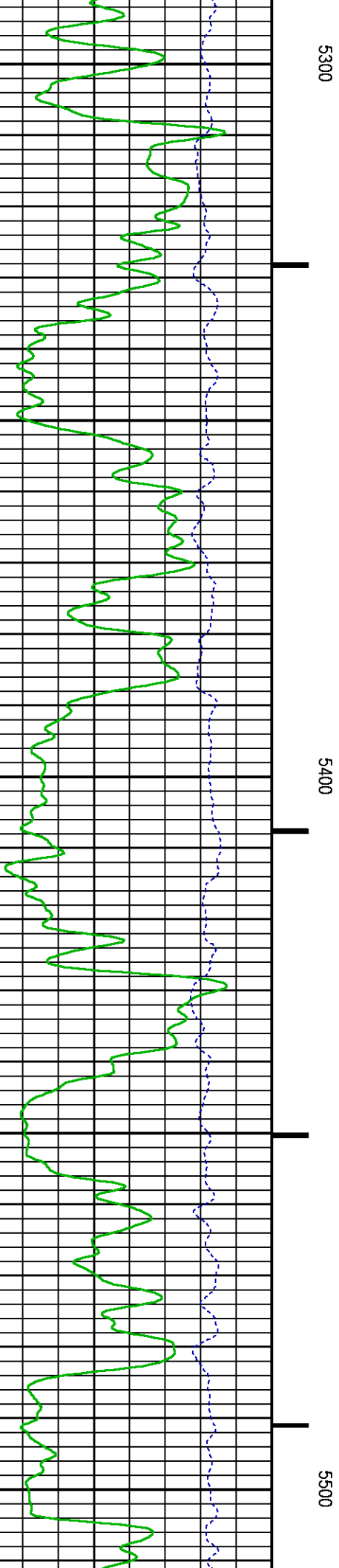
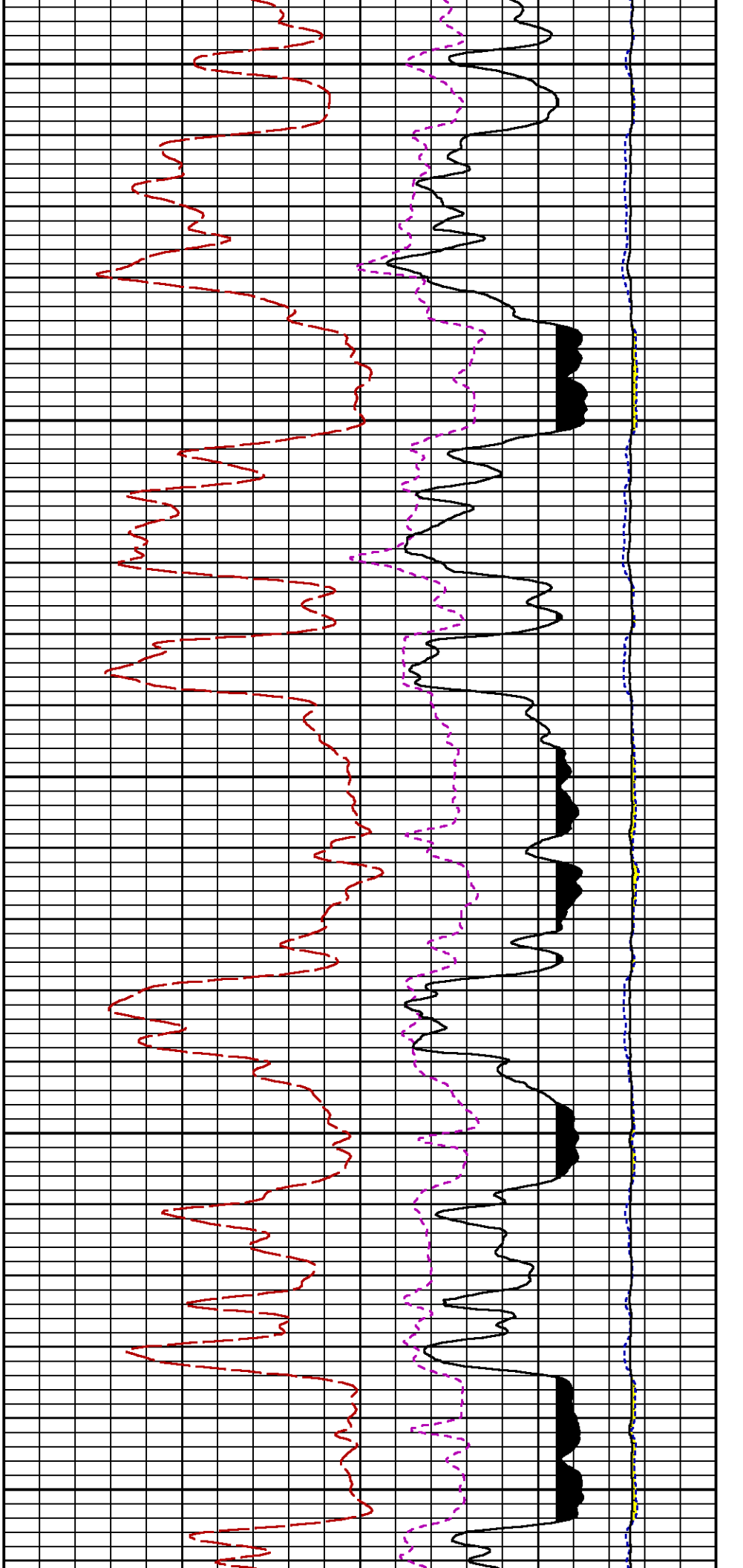


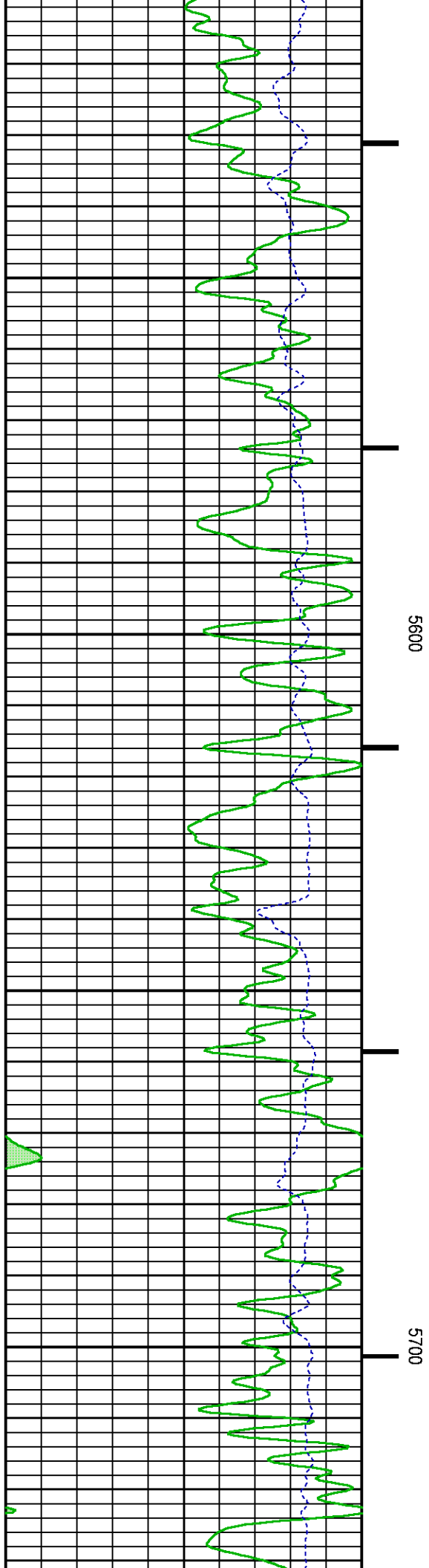
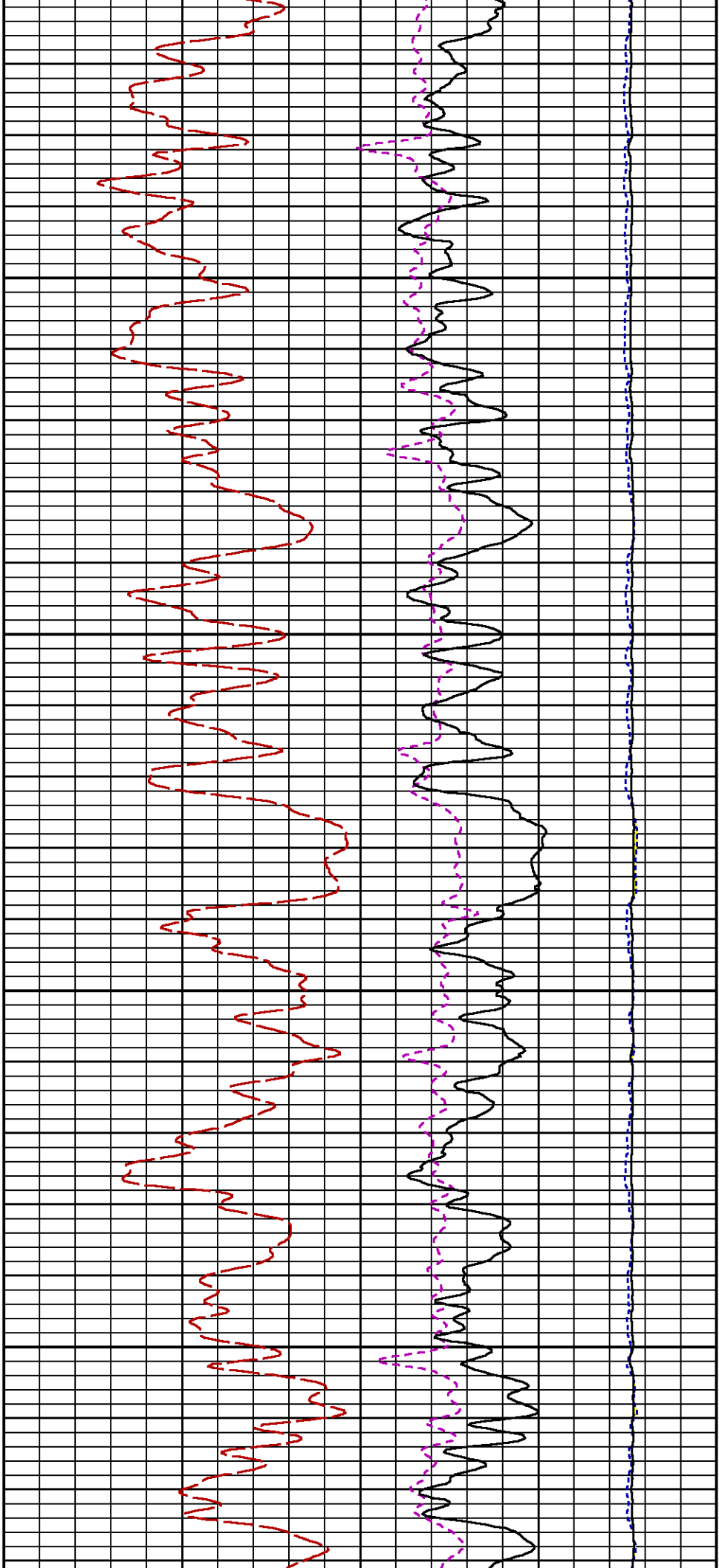


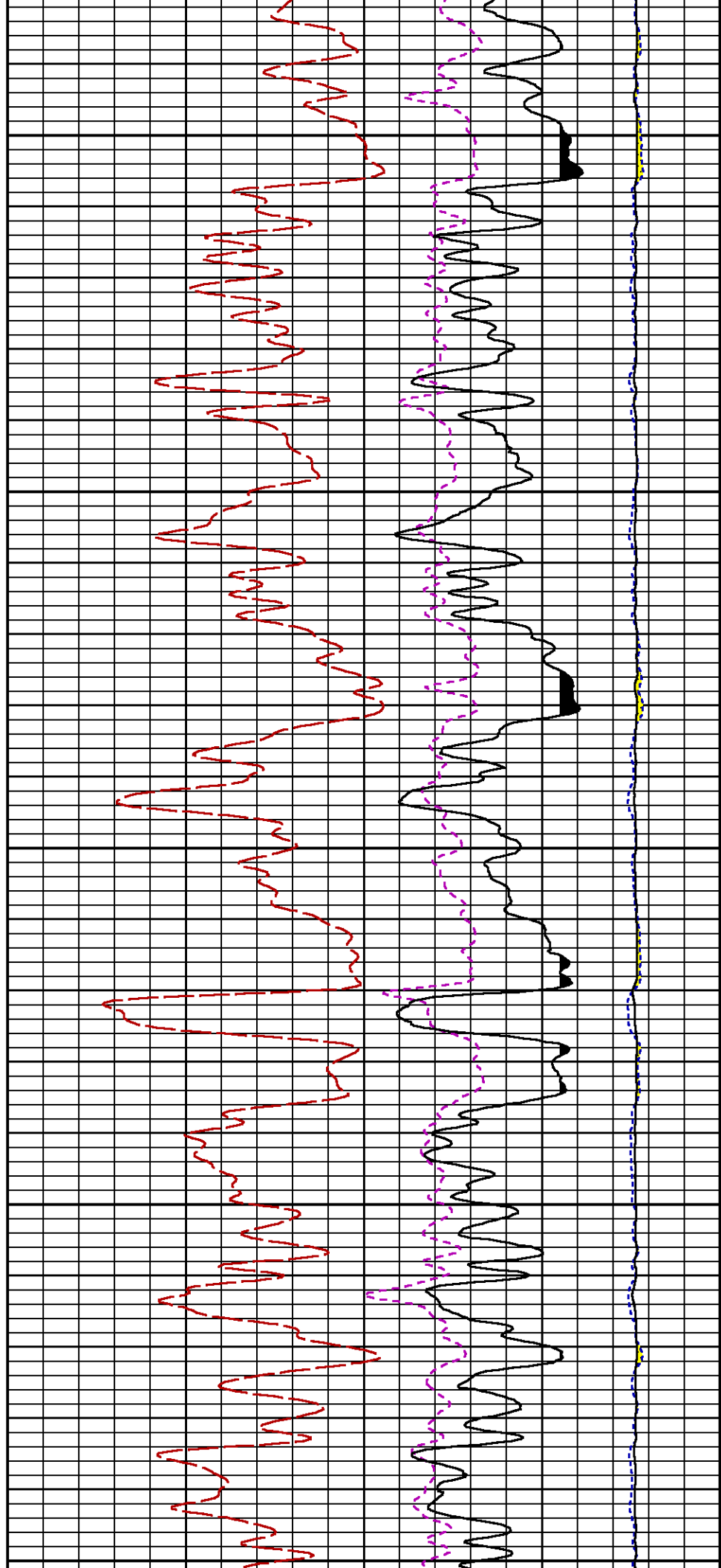
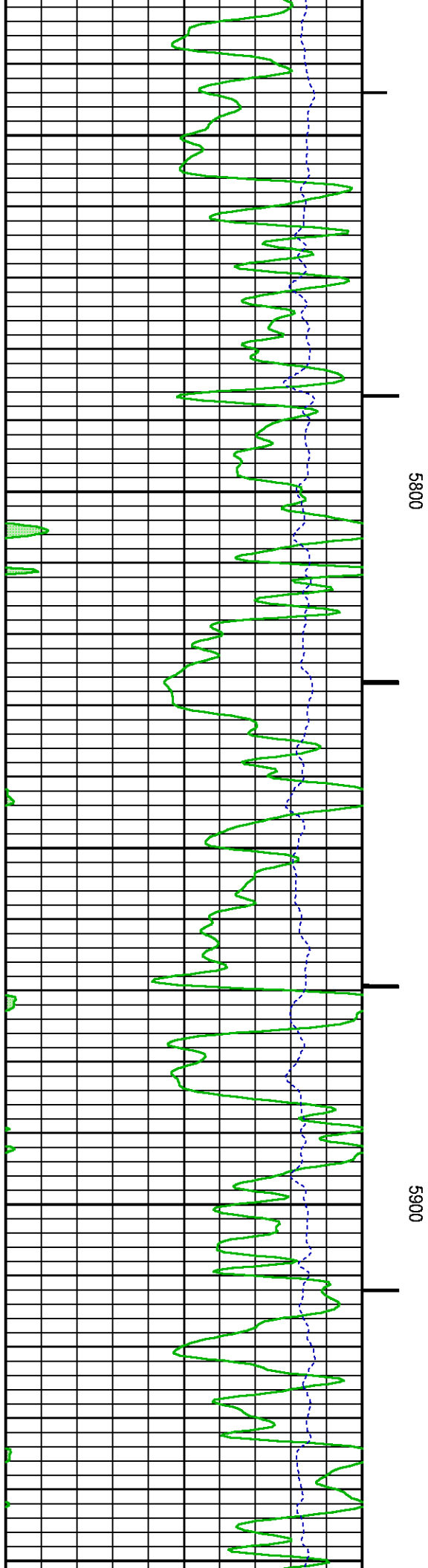
5100

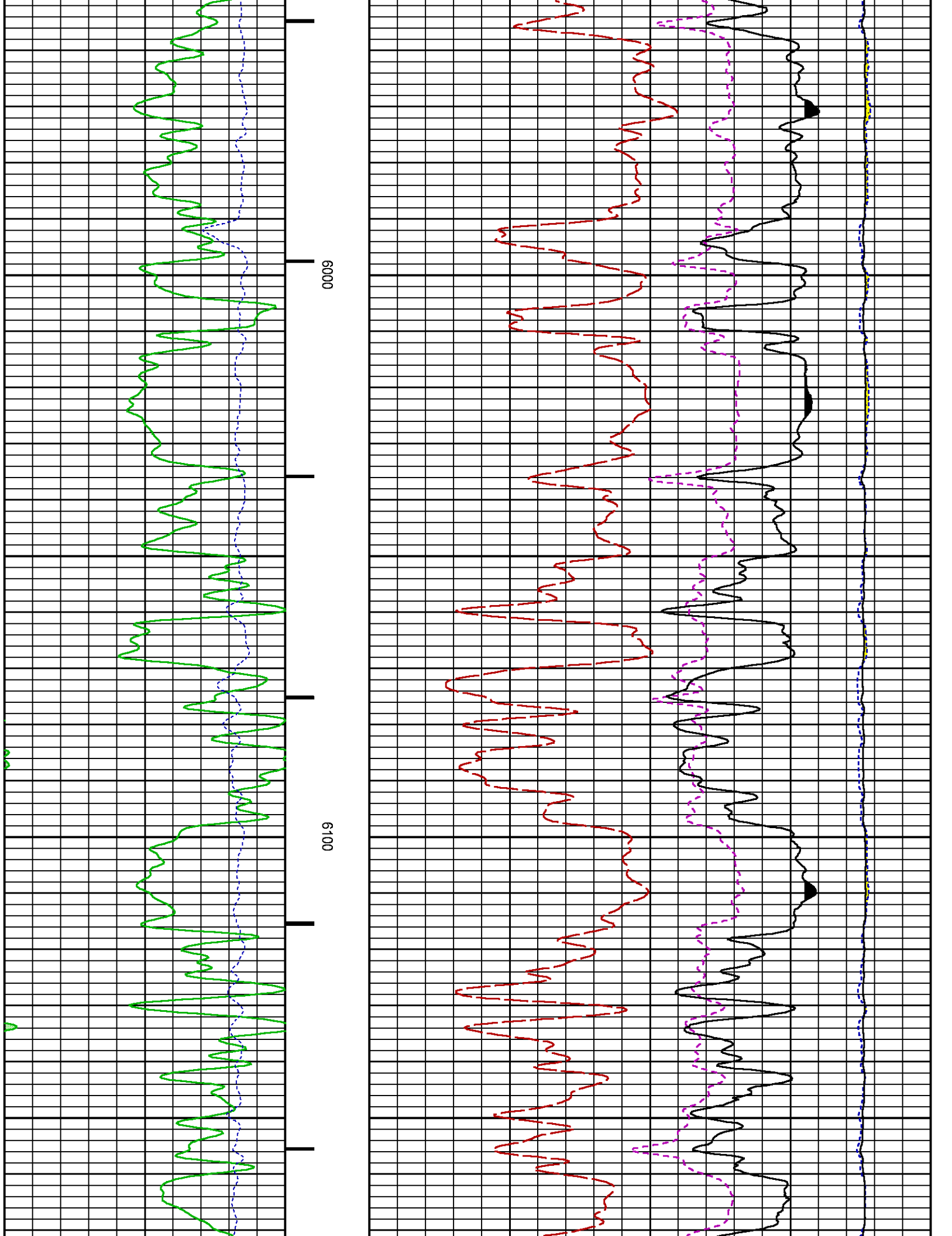
5200

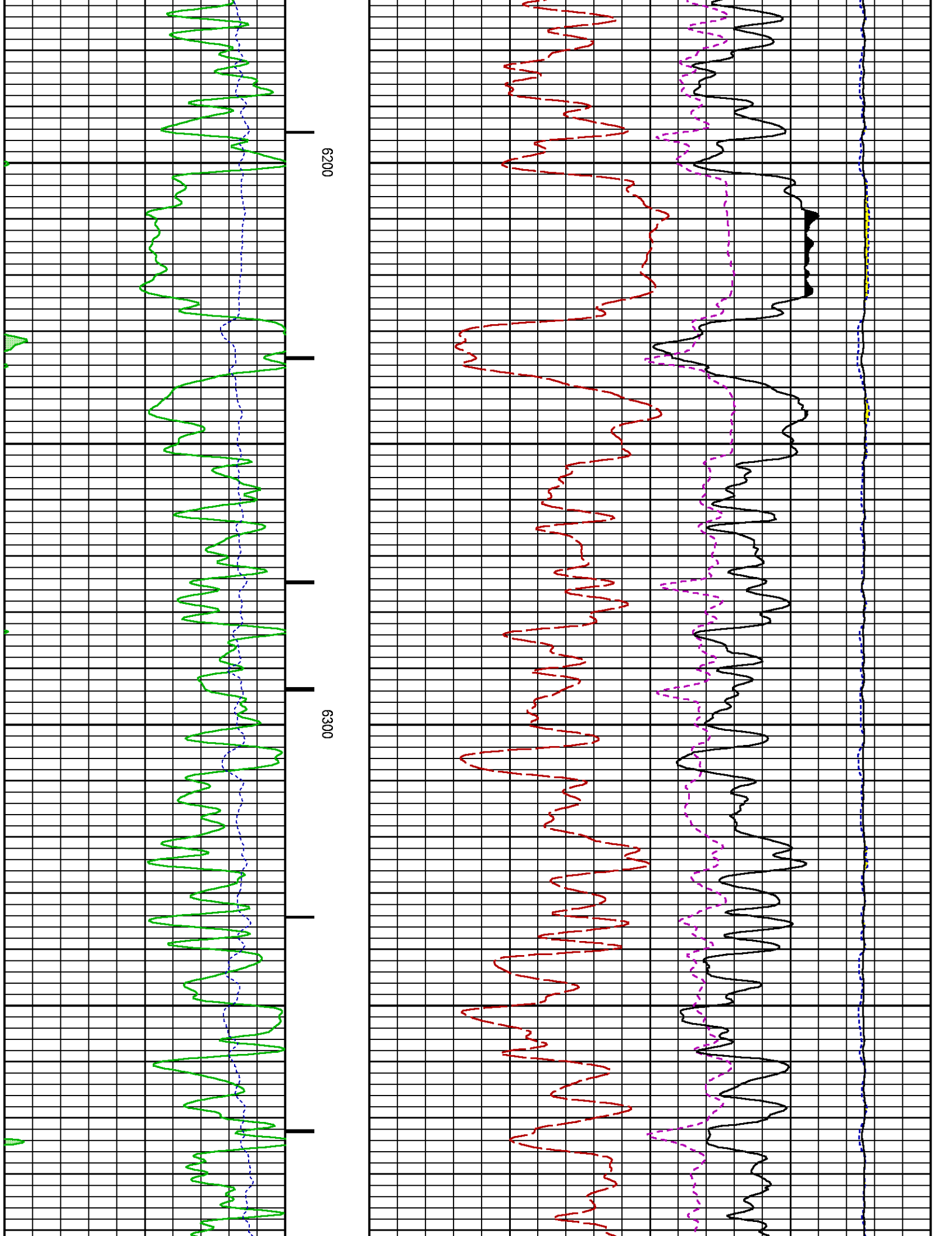


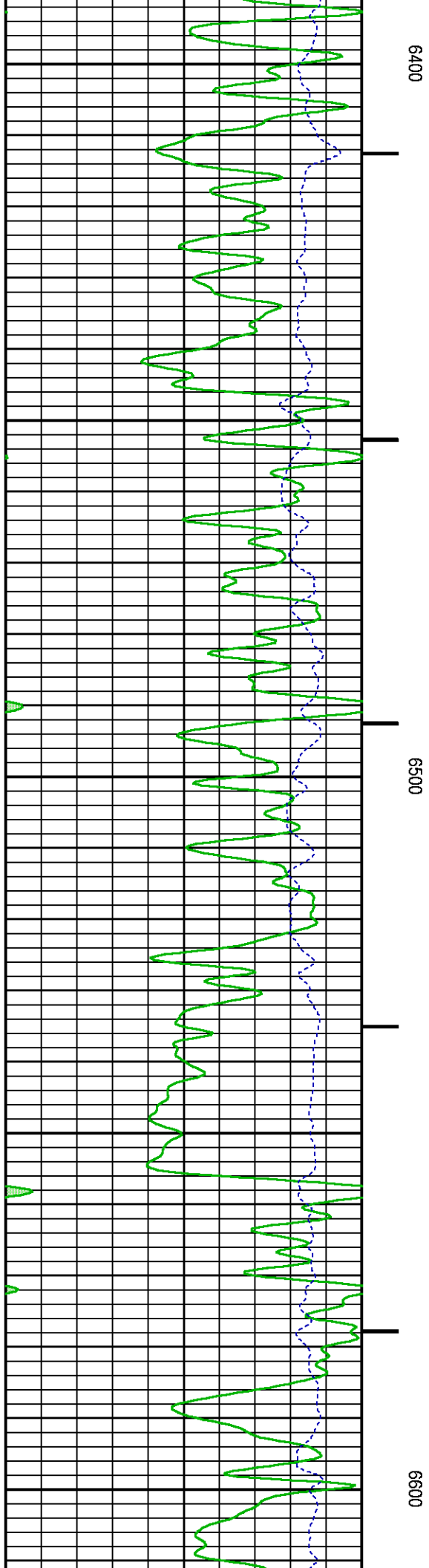
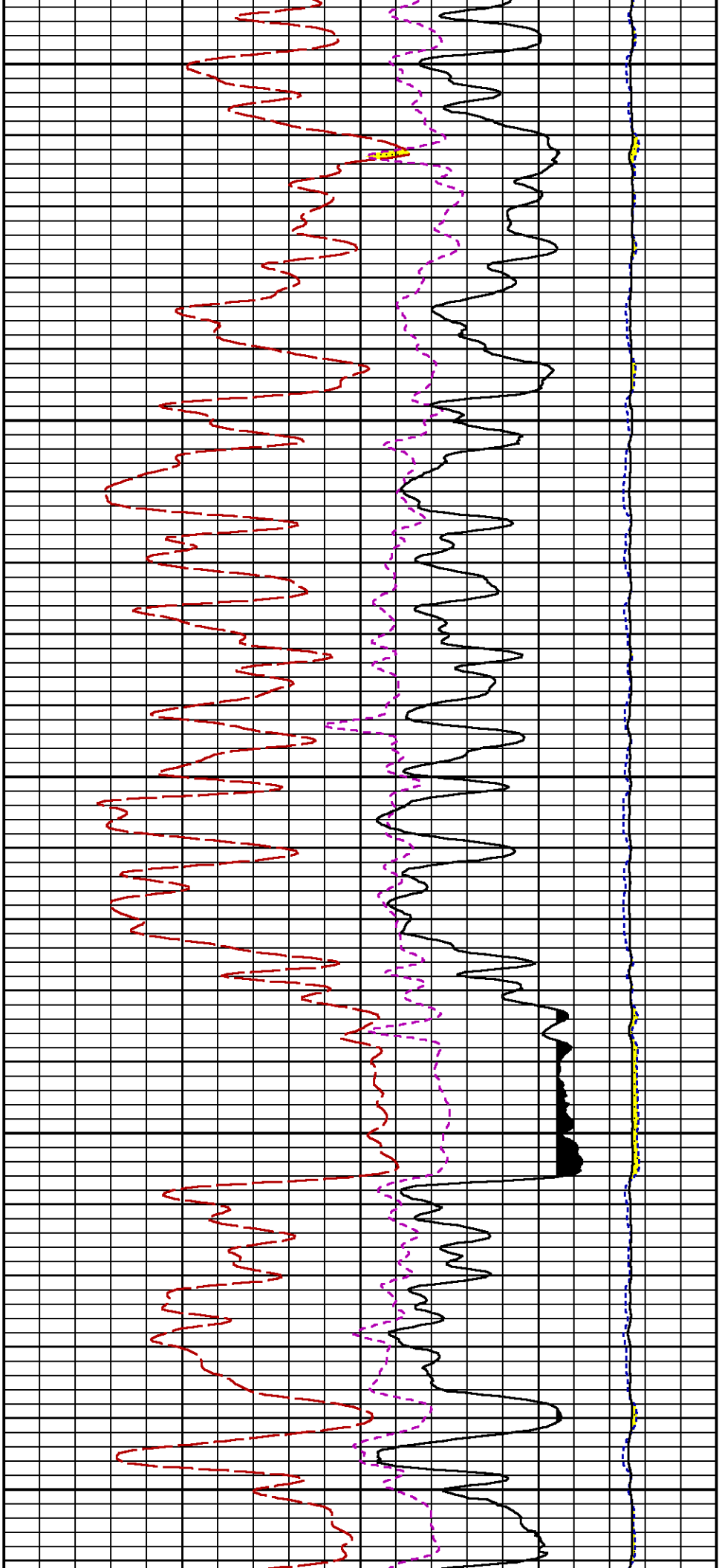


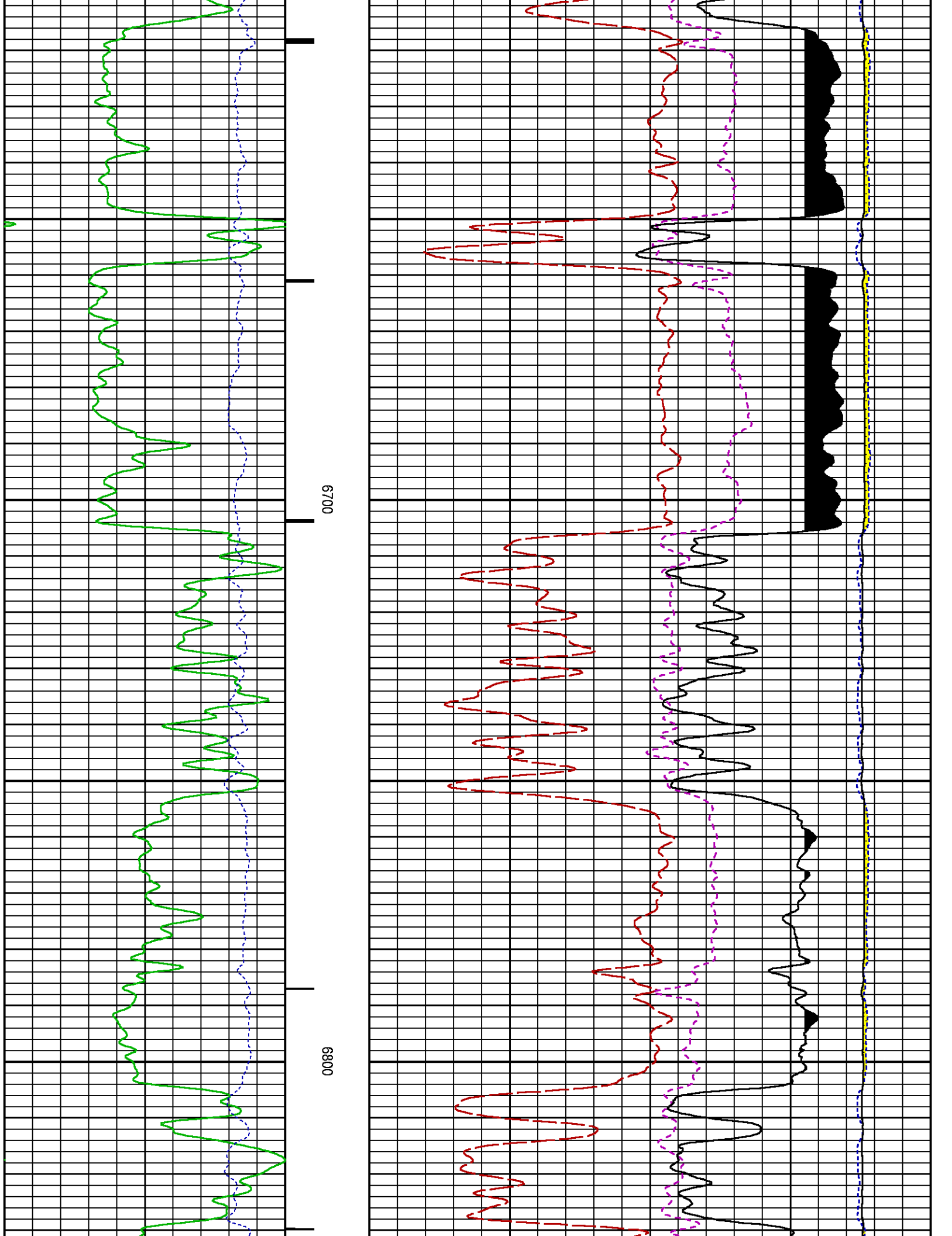


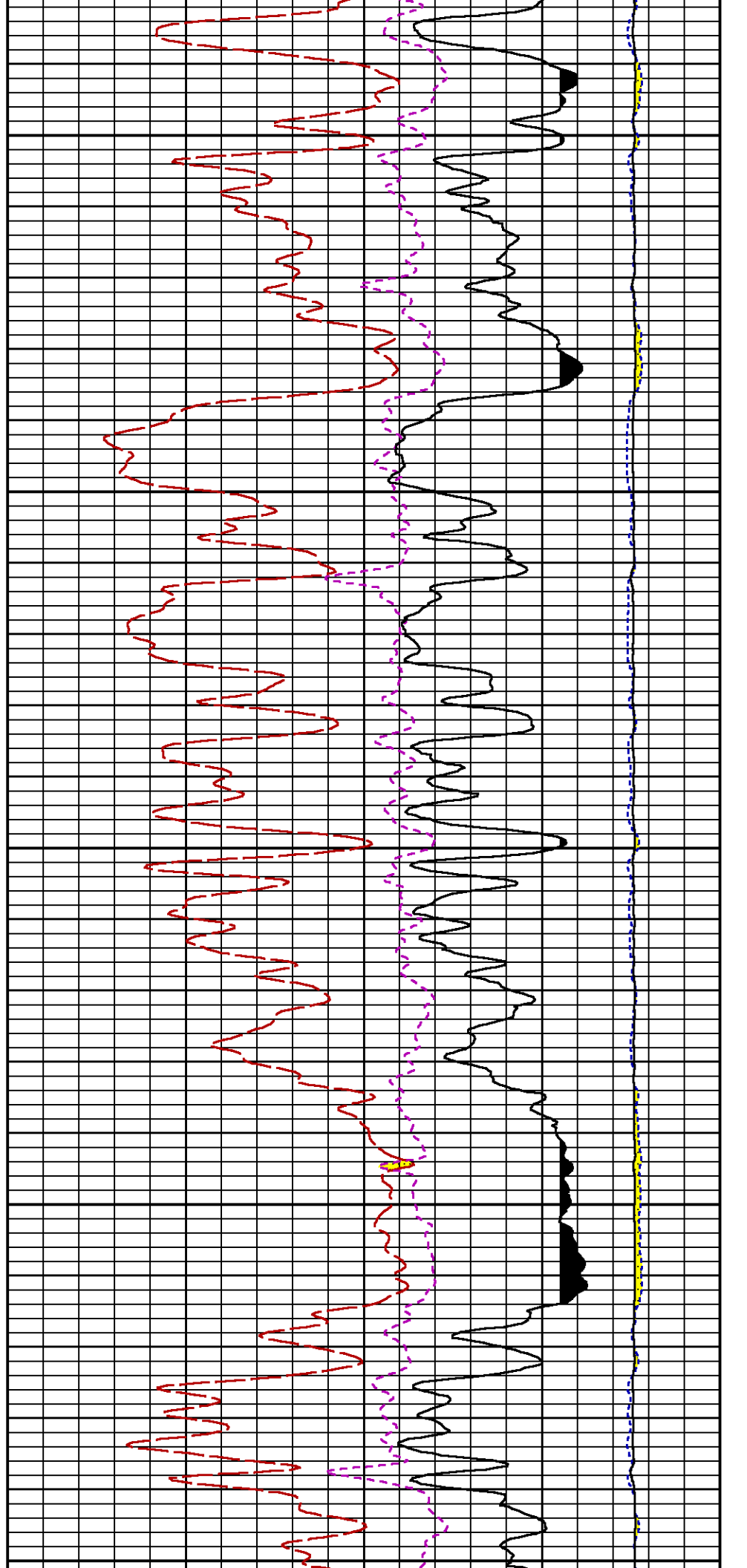
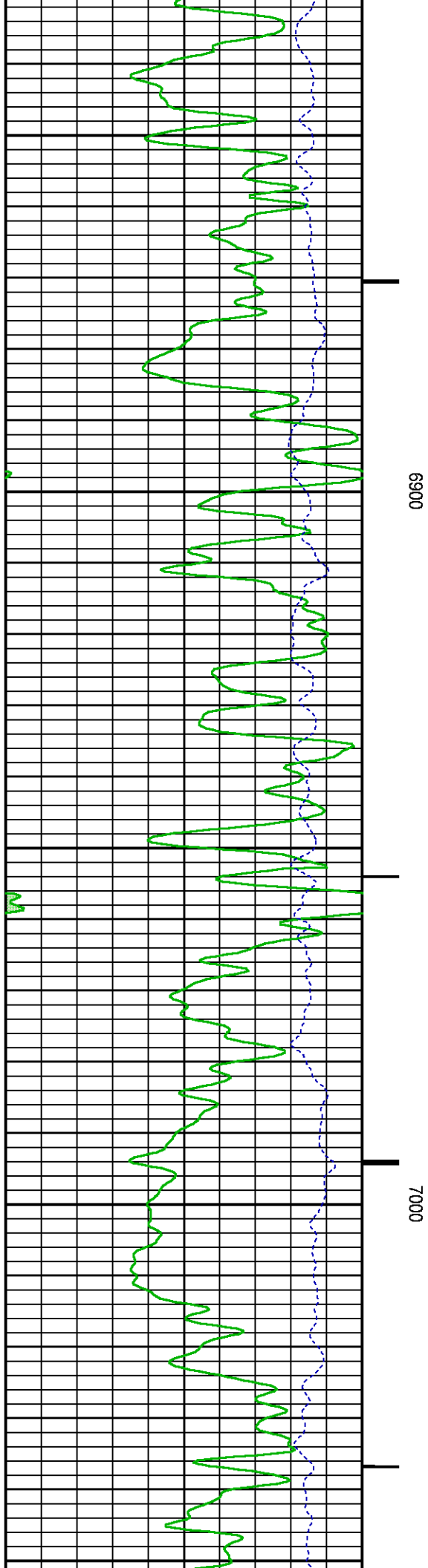


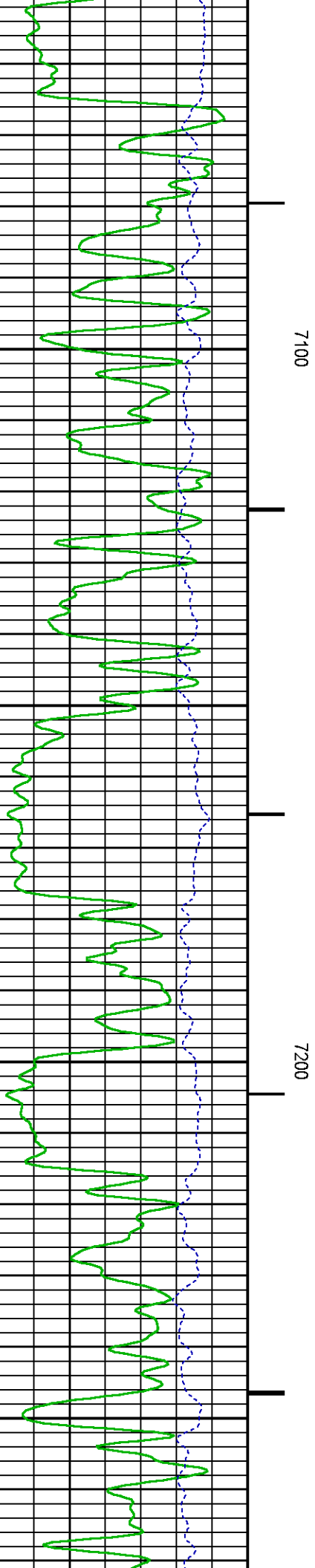
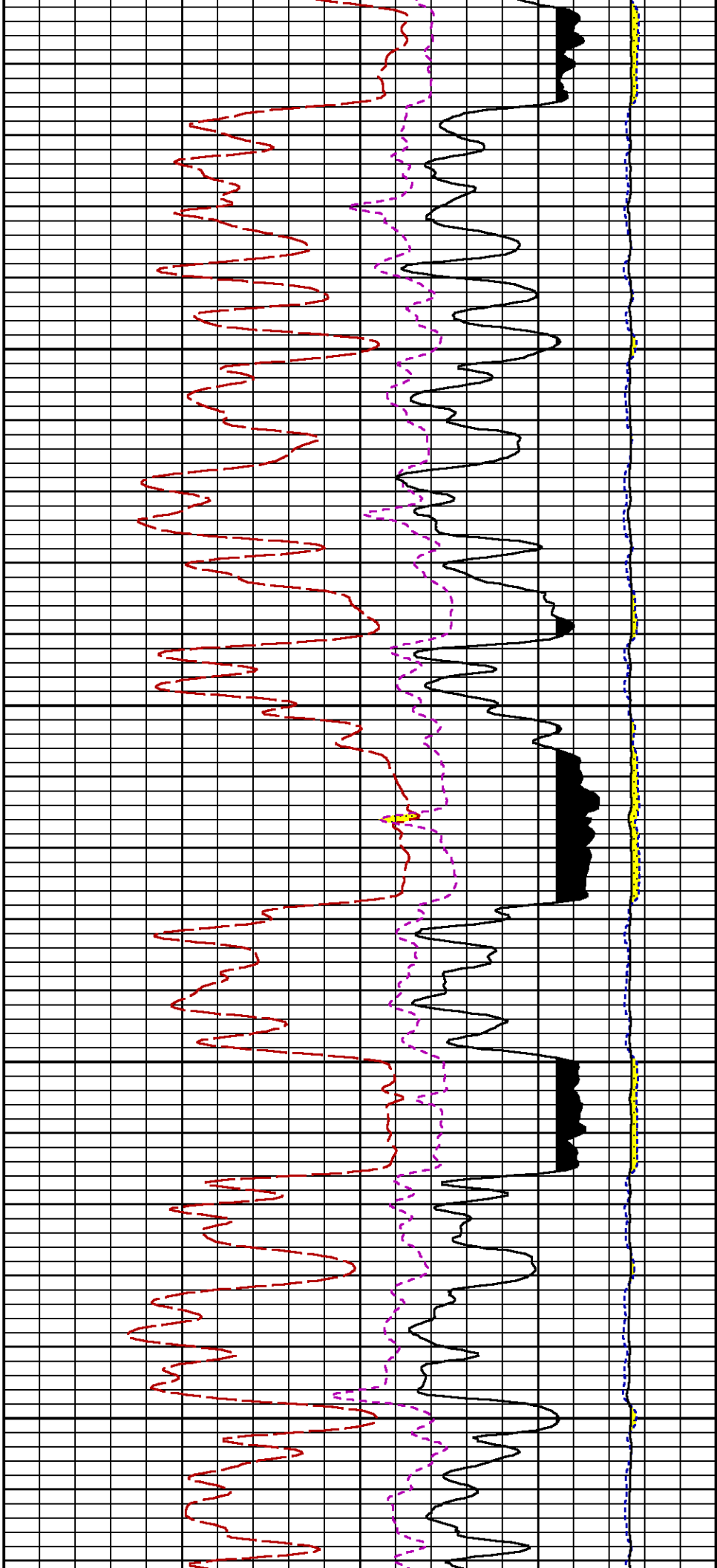


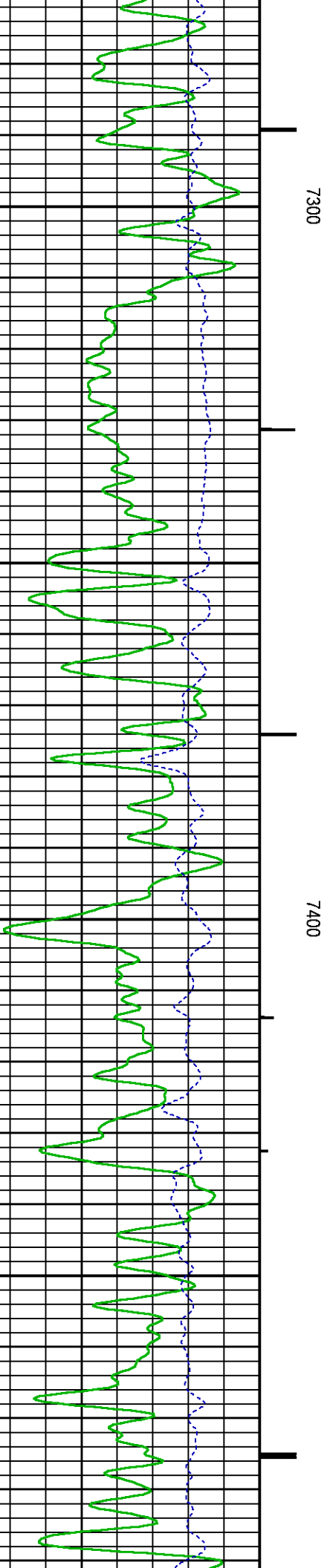
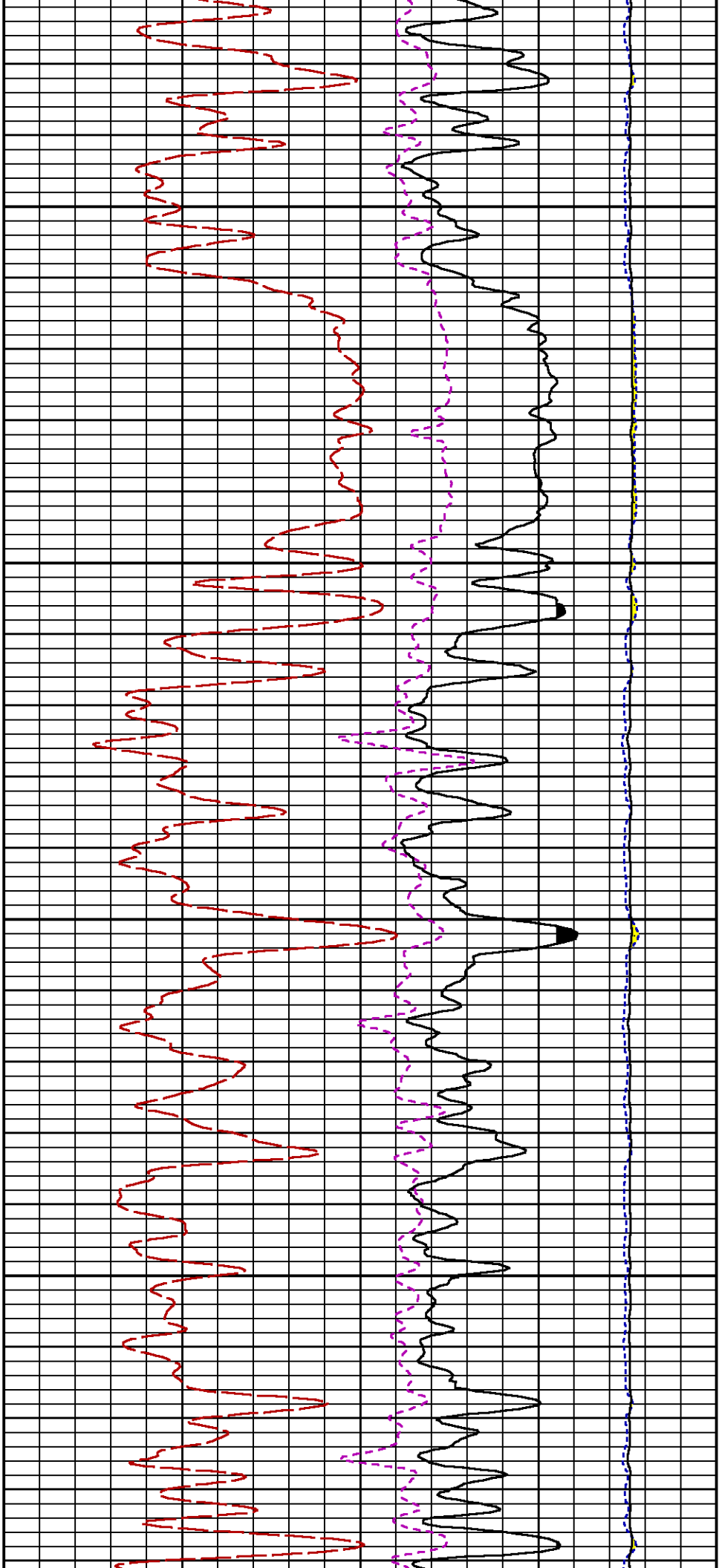


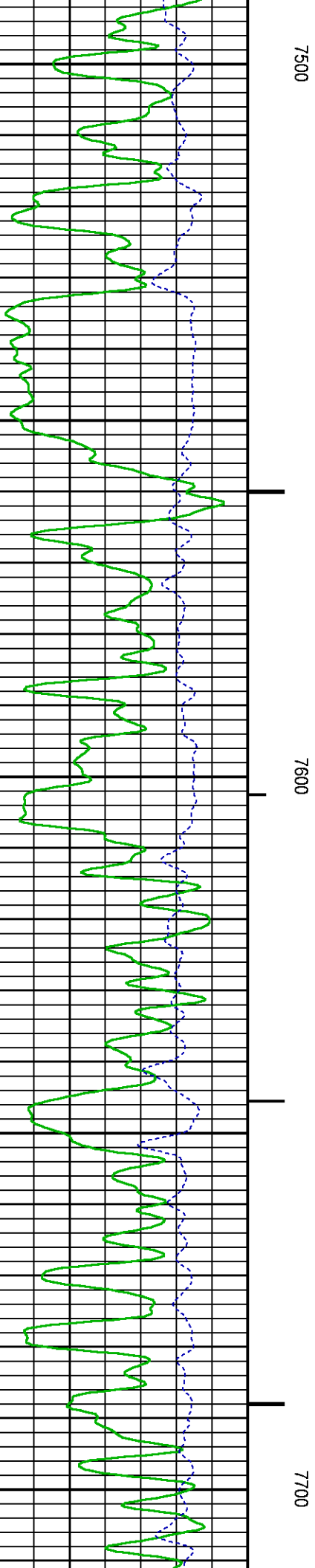
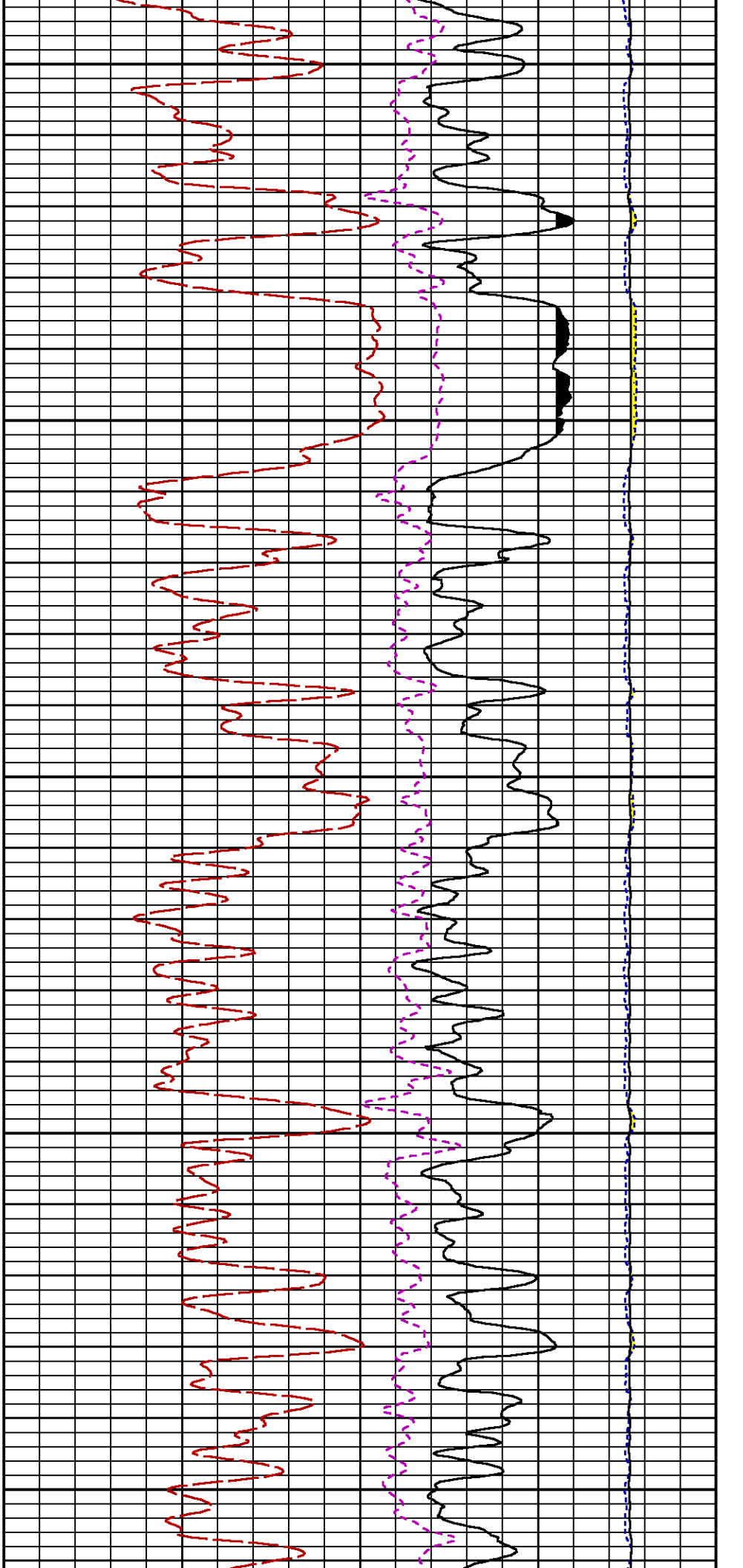


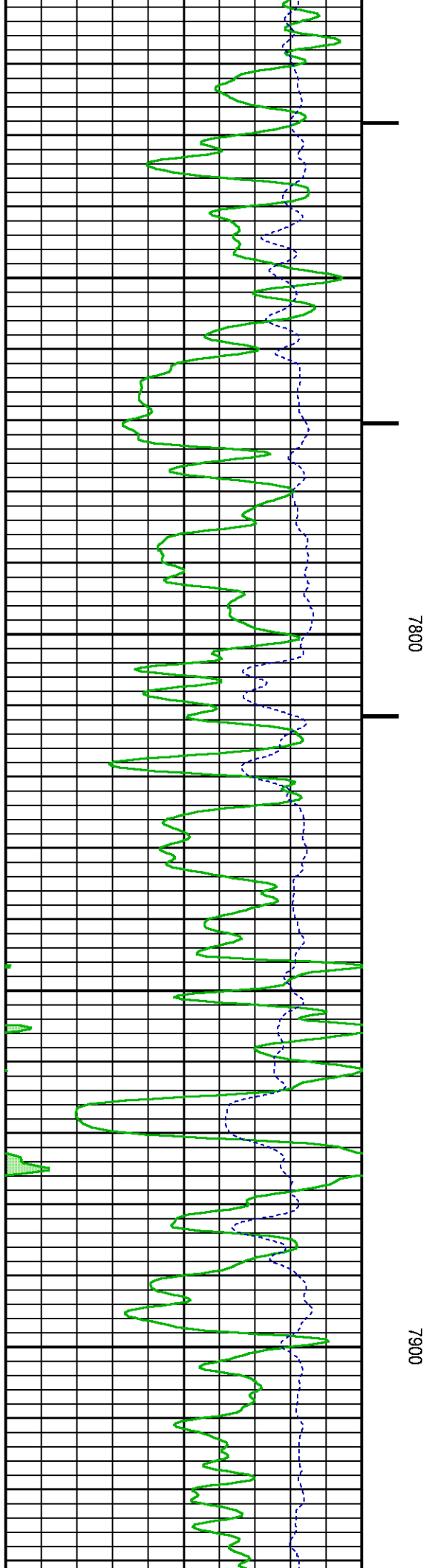
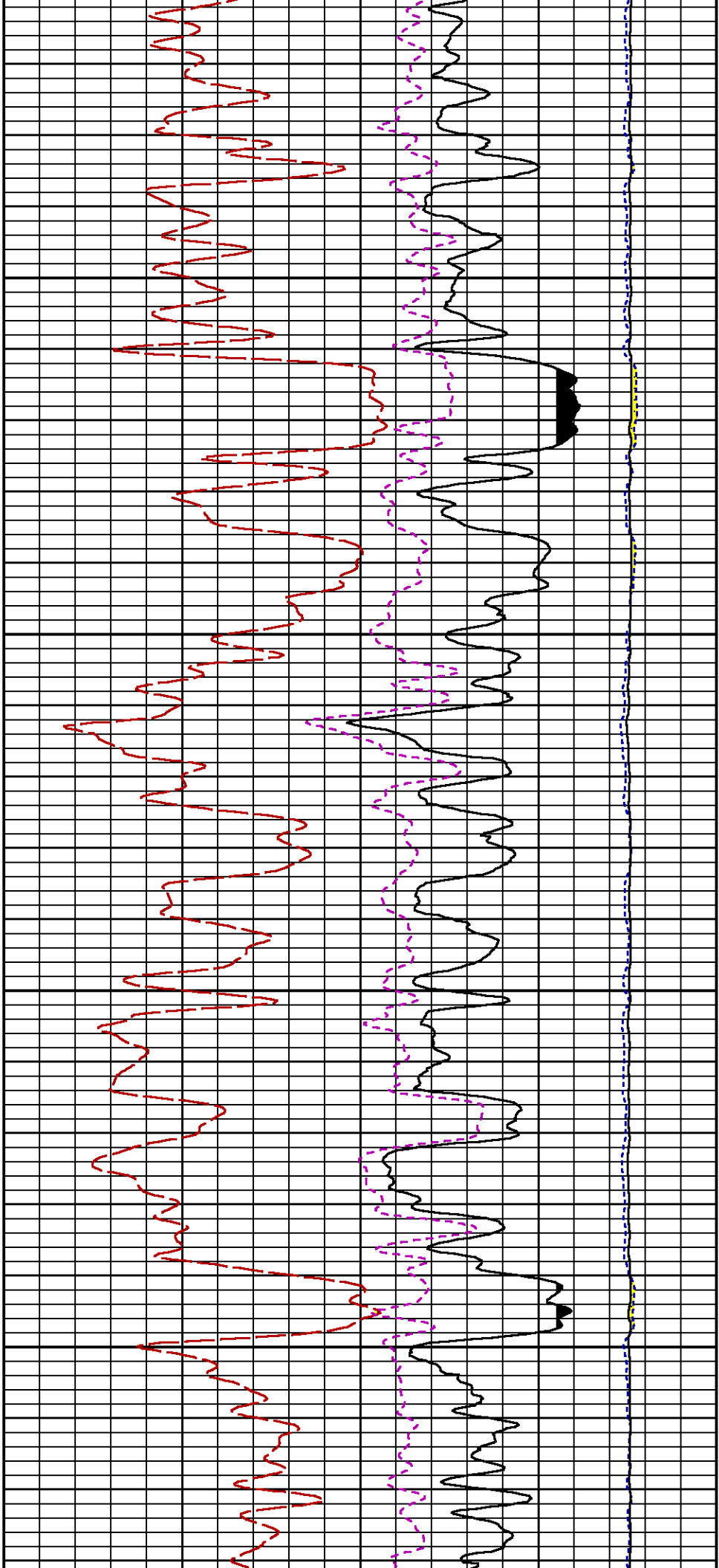


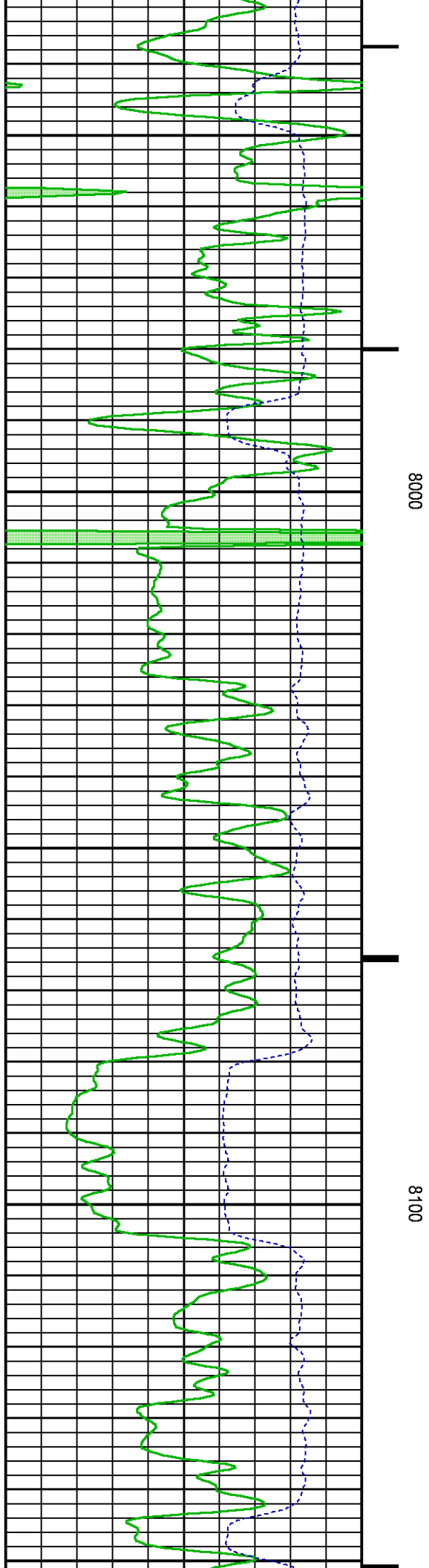
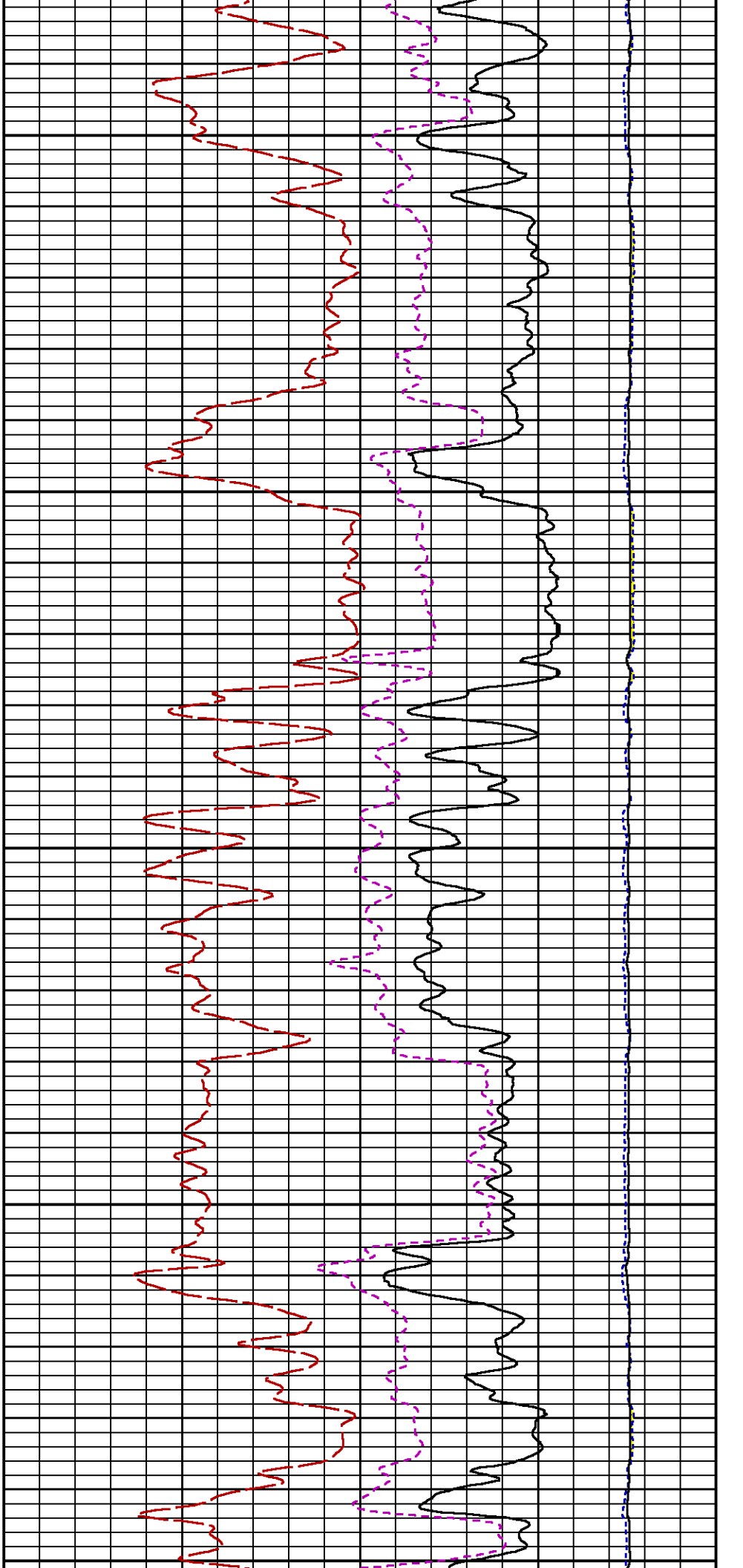


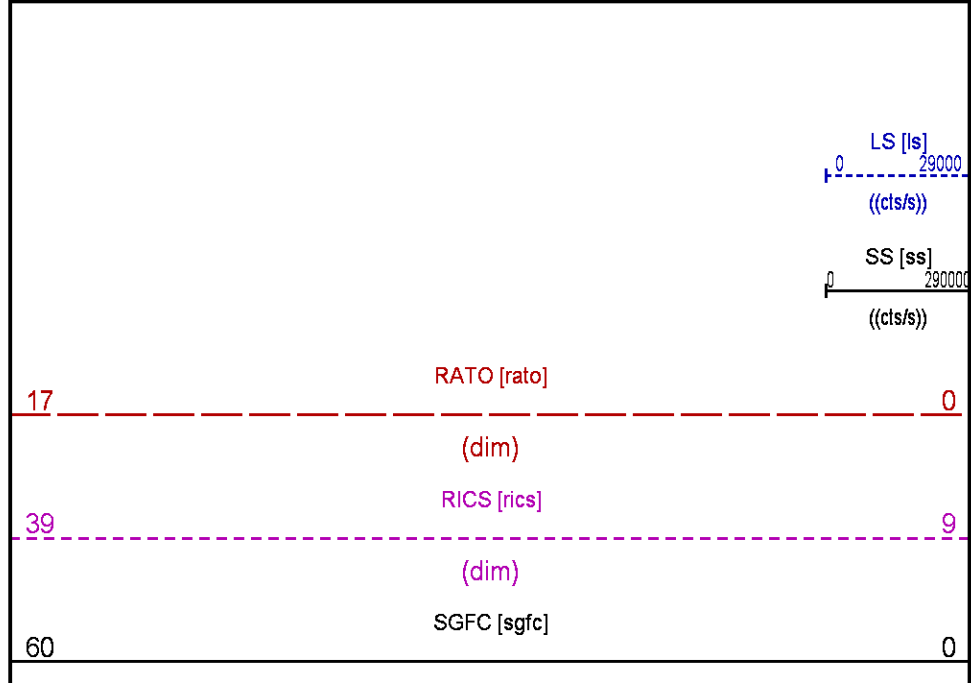
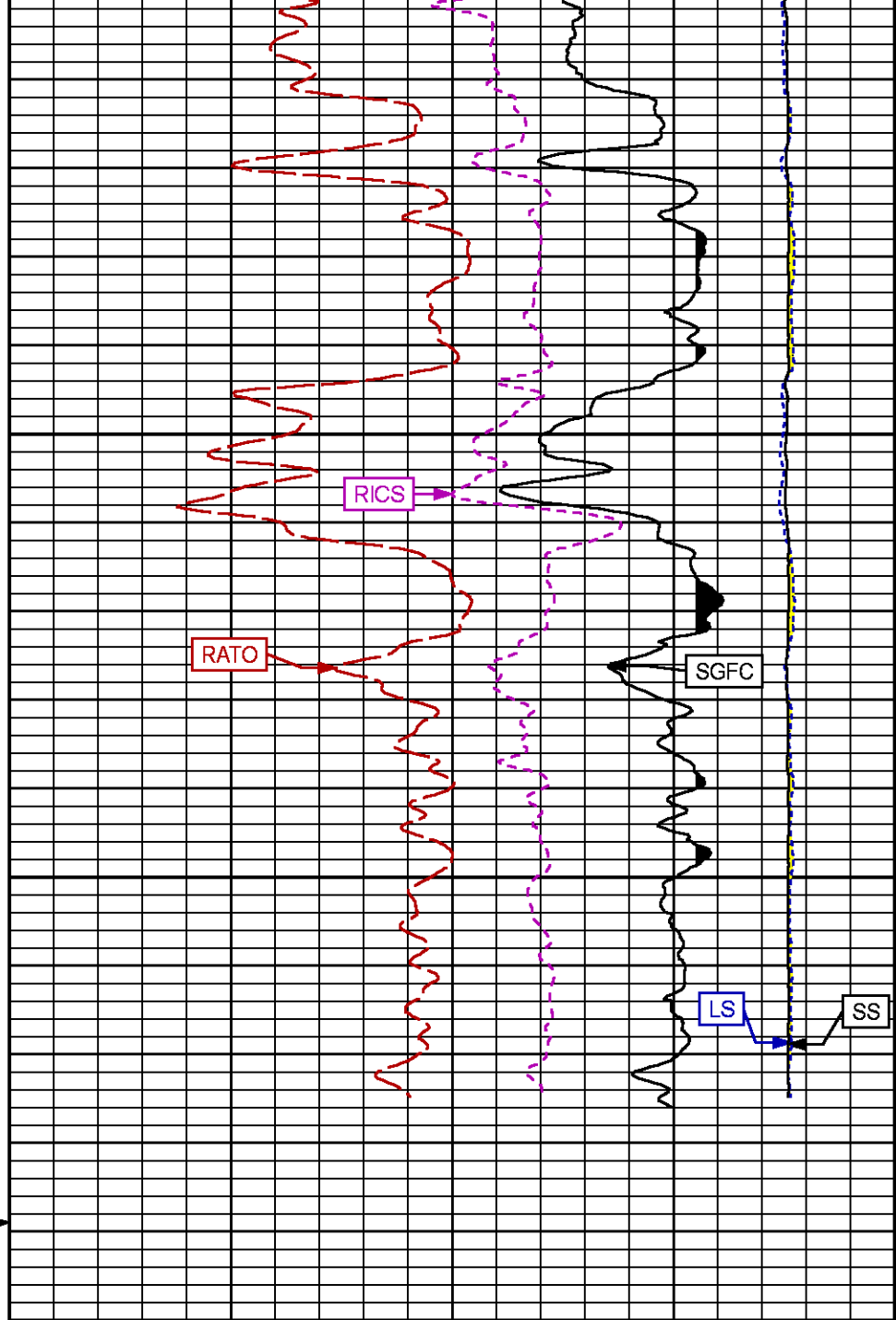
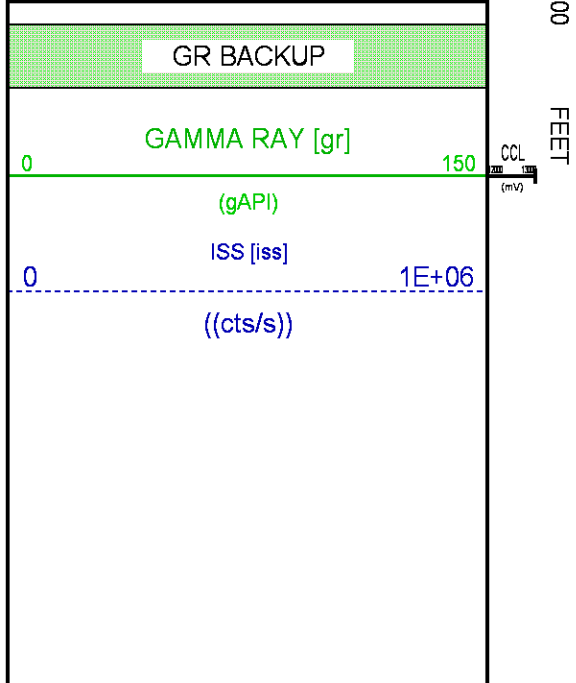
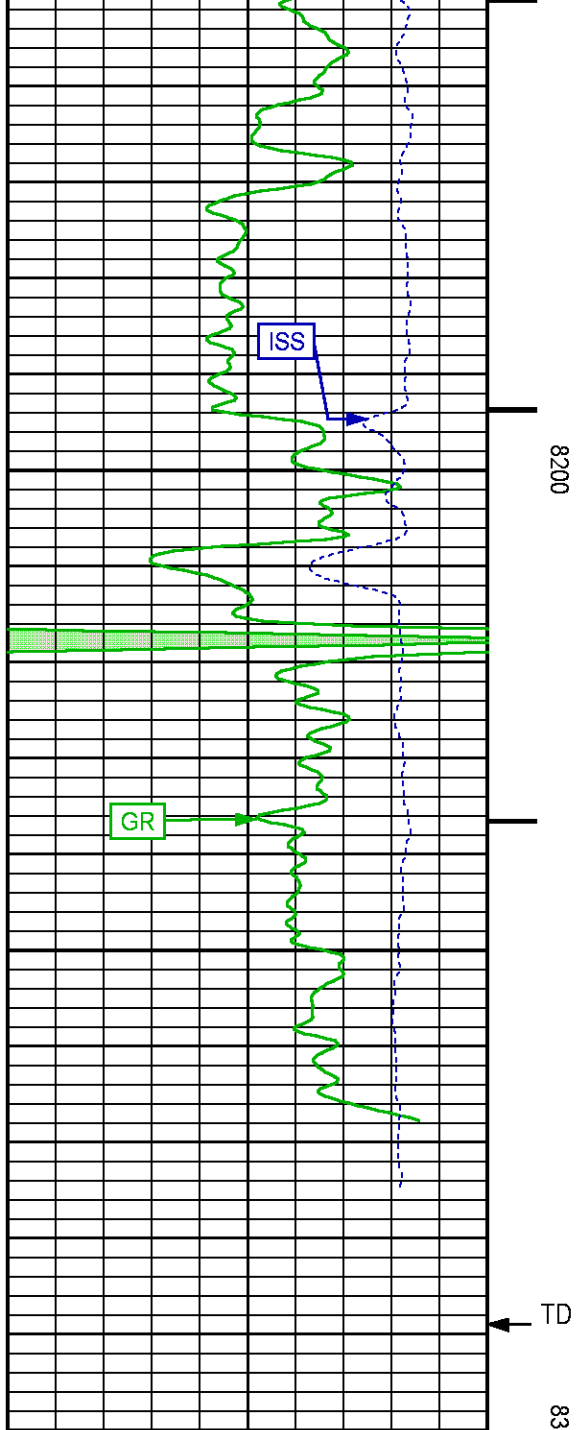












REPEAT PASS

ECLIPS 7.0i ECLIPS General Release Rel 7.0i Thu Jun 08 20:36:10 CDT 2017

Patches: 3

Plotted: Wed Apr 11 21:47:28 2018

PARAMETER AND FILTER SUMMARY REPORT

FILE: /dat1a/LARAMIE_BRUTON_30_19W/p353h01.prm
 LOGGING MODE: DEPTH DIRECTION: UP
 TOP DEPTH: 5469.500 ft BOTTOM DEPTH: 5720.170 ft

SYMMETRIC FILTER

MEASUREMENT TYPE	PARAMETER	VALUE	UNITS	INTERVAL (ft)
GR	FILTER ()	medium (1)		TOP BOTTOM

RPM PROCESSING

MEASUREMENT TYPE	PARAMETER	VALUE	UNITS	INTERVAL (ft)
PNC Parameters	BOREHOLE CONTENTS	FLUID		TOP BOTTOM
	OPEN/CASED HOLE	CASED HOLE		" "
	BOREHOLE SIZE	7.87	in	" "
	LARGEST CASING OD	4.50	in	" "
	MATRIX	SANDSTONE		" "

CURVE DESCRIPTION REPORT

CURVE NAME	CREATION DATE	CURVE DESCRIPTION
F1:CCL	N/A	CASING COLLAR LOCATOR
F1:GR	N/A	GAMMA RAY
F1:ISS	N/A	INELASTIC SHORT SPACE COUNT RATE
F1:LS	N/A	LONG SPACE COUNT RATE
F1:RATO	N/A	SHORT/LONG SPACE COUNT RATE RATIO
F1:RICS	N/A	SHORT SPACE INELASTIC TO CAPTURE COUNT RATE RATIO (ISS/CSS)
F1:SGFC	N/A	BOREHOLE AND DIFFUSION CORRECTED SIGMA
F1:SS	N/A	SHORT SPACE COUNT RATE

CURVE MEASURE POINT OFFSET

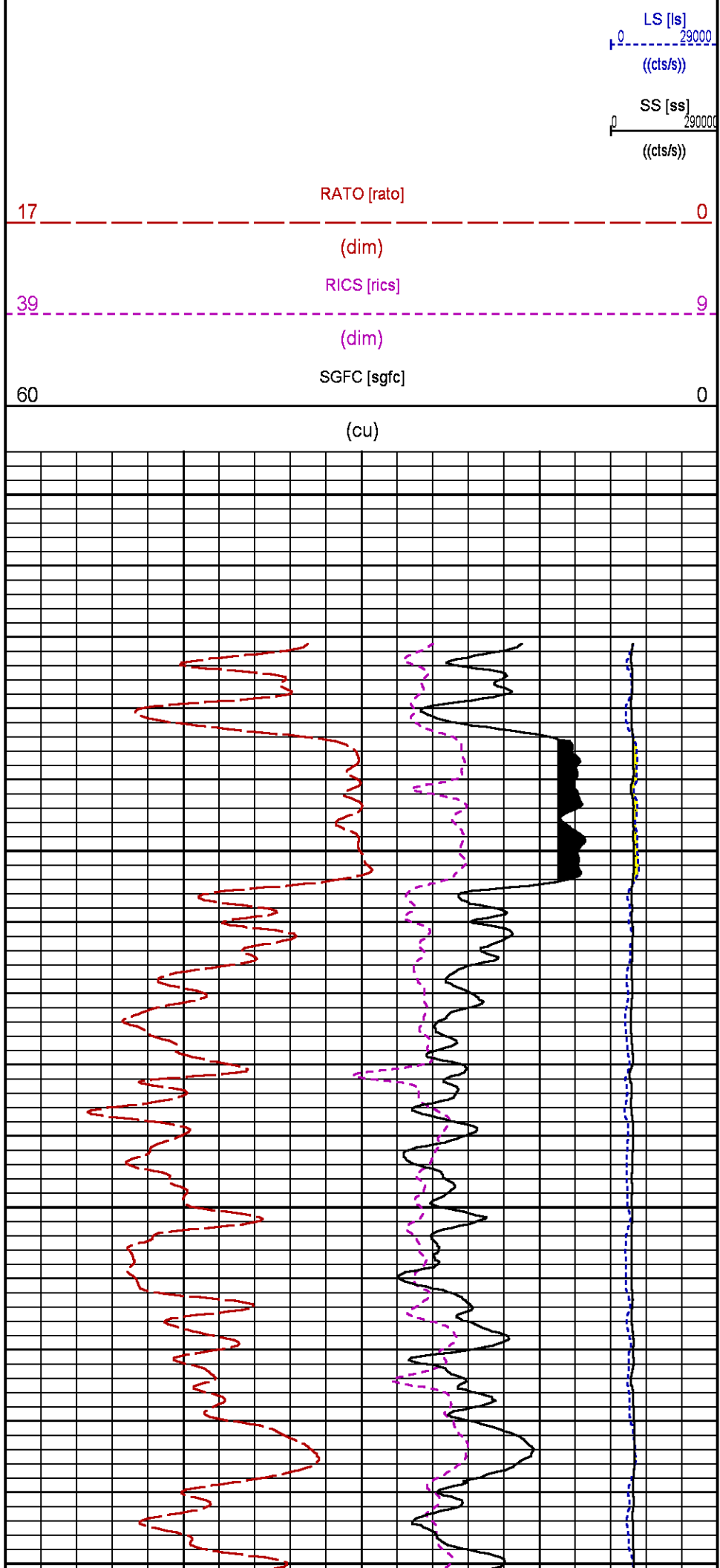
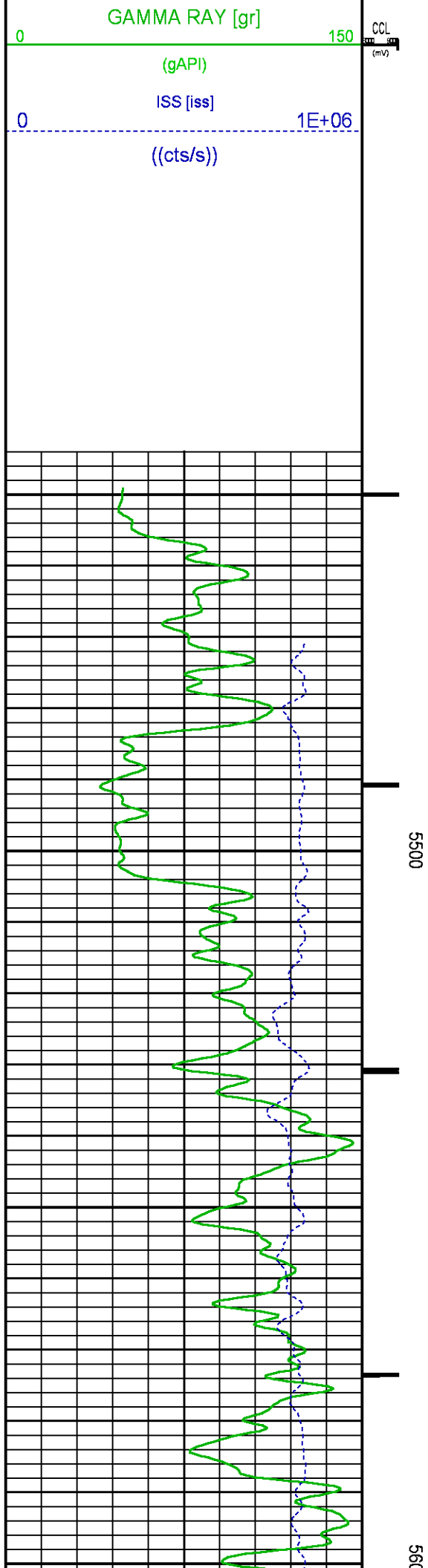
CURVE	OFFSET (ft)	CURVE	OFFSET (ft)	CURVE	OFFSET (ft)	CURVE	OFFSET (ft)
CCL	-26.00	ISS	-12.75	RATO	-12.75	SGFC	-12.75
GR	-23.00	LS	-12.75	RICS	-12.75	SS	-12.75

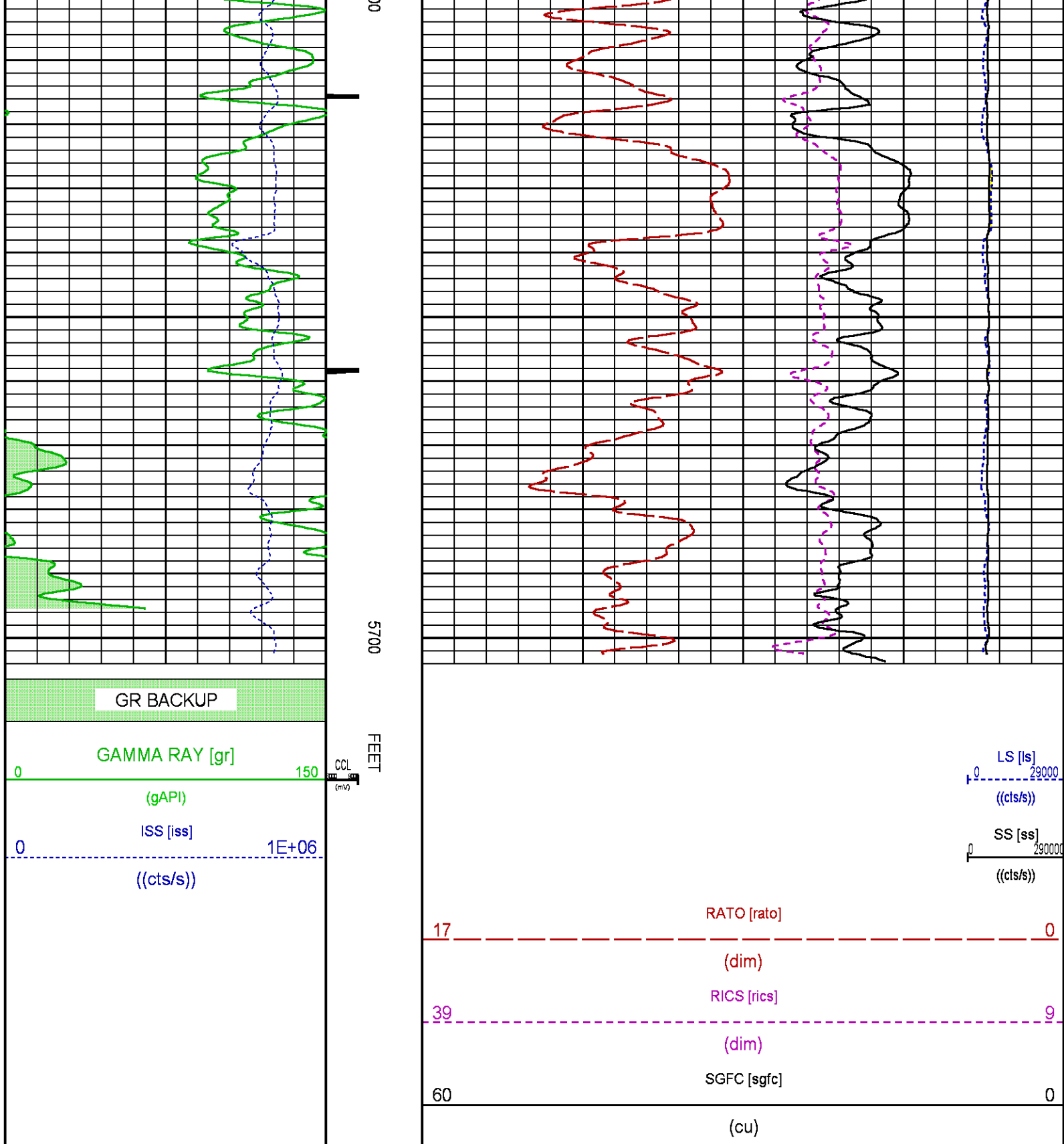
Presentation : SysA:/dat1a/LARAMIE_BRUTON_30_19W/30-19W_RPM_REPEAT.fvpdf [5"/100' Scale]
Plot Interval : 5445 - 5718.5 Feet

Data File 1 : F1 : SysA:/dat1a/LARAMIE_BRUTON_30_19W/30-19W_RPM_REPEAT.xtf
Created On : N/A
Company : LARAMIE ERNGY LLC
Well : BRUTON FEDERAL 30-19W
Field : VEGA
File Interval : 5444.25 - 5718.75 Feet
OCT : p353h

GR BACKUP

FEET





CALIBRATION / VERIFICATION SUMMARY

GR PRIMARY CALIBRATION SUMMARY

Source File: /dat1a/LARAMIE_BRUTON_30_19W/p353h.tp1

TOOL #: 8262XA 10196540 DATE/TIME PERFORMED: Thu Mar 29 14:56:29 2018

UNIT #: 4352 ML4352 CALB JIG #: 4702NK DA_228

	BACKGROUND (cts/s)	CALBRTR ON (cts/s)	CR DIFF (cts/s)	MULT	BACKGROUND (gAPI)	CALBRTR ON (gAPI)	CALBRTR (gAPI)
GR	60.02	341.02	281.0	0.658	39.52	224.52	185

GR PRIMARY VERIFICATION SUMMARY

TOOL #: 8262XA 10196540 DATE/TIME PERFORMED: Thu Mar 29 14:59:31 2018

UNIT #: 4352 ML4352 VERI JIG #: 4702NK DA_228

	BACKGROUND (cts/s)	CALBRTR ON (cts/s)	MULT	BACKGROUND (gAPI)	CALBRTR ON (gAPI)	DIFF. (gAPI)
GR	58.80	348.87	0.658	38.71	229.68	190.97
						175.00 195.00

RPM_PNC_3D PRIMARY CALIBRATION SUMMARY

TOOL: 8283PA 10430258 DATE/TIME PERFORMED: Wed Mar 28 19:08:19 2018

UNIT: 5753XD 111111 CALIBRATOR: 2437XB 112674 SOURCE: 8281AA 10430258 HOURS: 8281AA 19

	ISS	Mtr Vlt (V)	SS Gain	LS Gain	XLS Gain	EA Temp (degF)	Sync Delay (usec)	RCAL
Raw Data	809301	122	2198	2389	2242	108	8.0	0.9715
Interpolated	1300000	143	2176	2381	2236			

	ISS	BKS	BKL	BKX	SGA1	SDA1	SGA2	SDA2
Raw Data	809301	6008	943	130	26.12	0.15	24.24	0.32
					25.35 26.40	0.00 0.20	23.60 24.80	0.00 0.40

	ISS	ILS	IXS	SS	SS2	LS	CSS	CLS
Raw Data	809301	169224	26183	89244	31721	8211	54062	13165
Fit Quality %		0.813	0.977	0.775	0.776	0.762	0.739	0.755

	ISS	RBOR	RIN ISS/ILS	RIN13 ISS/IXS	RICS ISS/CSS	RATO SS/LS	RTWO SS2/LS	RONE CSS/CLS
Raw Data	809301	1.43	4.78	30.92	14.97	10.87	3.86	4.11
		1.42 1.45	3.55 5.52	22.20 32.70	10.99 16.34	10.06 11.10	3.57 3.95	3.76 4.22
Fit Quality %		0.043	0.140	0.095	0.134	0.015	0.022	0.029
Reduced	1378034	1.43	4.80	31.03	15.01	10.87	3.86	4.11
		1.42 1.45	4.33 5.52	27.60 32.70	13.70 16.34	10.06 11.10	3.57 3.95	3.76 4.22

INSTRUMENT CONFIGURATION

Source File: /dat1a/LARAMIE_BRUTON_30_19W/RPM-tdg

A3 CABLEHEAD
Diameter : 1.37"

34.08'

PCM POWER SUPPLY

Diameter : 1.70"
Length : 3.86'
Weight : 18 lbs
Series : 8250EA
Mnemonic : PCM

TELEMETRY / CCL

Diameter : 1.70"
Length : 4.46'
Weight : 20 lbs
Series : 8248ED
Mnemonic : PCM
Measure Point: 1.00': CCL MP

CCL MP — 26.03'

GAMMA RAY

Diameter : 1.70"
Length : 3.02'
Weight : 15 lbs
Series : 8262XA
Mnemonic : GR
Measure Point: 0.89': GR MP

GR MP — 22.90'

RPM ELECTRONICS

Diameter : 1.70"
Length : 4.48'
Weight : 16 lbs
Series : 8281EA
Mnemonic : RPM

RPM C DETECTOR SECTION

Diameter : 1.70"
Length : 9.40'
Weight : 41 lbs
Series : 8283PA
Mnemonic : RPM
Measure Point: 5.45': XLS MP
Measure Point: 5.04': LS MP
Measure Point: 4.79': SS MP

XLS MP — 13.58'

LS MP — 13.16'

SS MP — 12.91'

RPM SOURCE SECTION

Diameter : 1.70"
Length : 4.70'
Weight : 18 lbs
Series : 8281EA

SERIES : 8255XA
Mnemonic : SRPL

TEMPERATURE / PRESSURE

Diameter : 1.70"
Length : 3.30'
Weight : 13 lbs
Series : 8255XA
Mnemonic : SRPL
Measure Point: 1.52': TEMP MP

TEMP MP
PRES MP 1.65'

BULL PLUG 1 11/16

0.00'

TOTAL LENGTH: 34.08'
TOTAL WEIGHT: 144 lbs
MAX DIAMETER: 0'1.70"

**BAKER
HUGHES**
a GE company



ECLIPS

COMPANY

LARAMIE ERNGY LLC

WELL

BRUTON FEDERAL 30-19W

FIELD

VEGA

COUNTY

MESA

STATE COLORADO

FILE NO:

CH133068

API NO:

05077104690000

LOCATION:

SHL: 2622' FSL & 1858' FEL
BHL: 658' FSL & 1306' FWL

ELEVATIONS:

KB 7673 FT
DF
GL 7643 FT

SEC 30 TWP 9S RGE 93W

DATE 11-Apr-2018