

Jason S. Allee—On behalf of L&L 40, Inc.
Colorado Licensed Professional Land Surveyor No. 38479 DATE: 4/5/2018
PROJECT#: 2016081

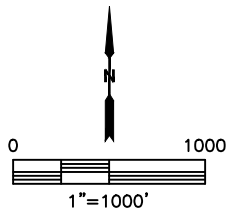
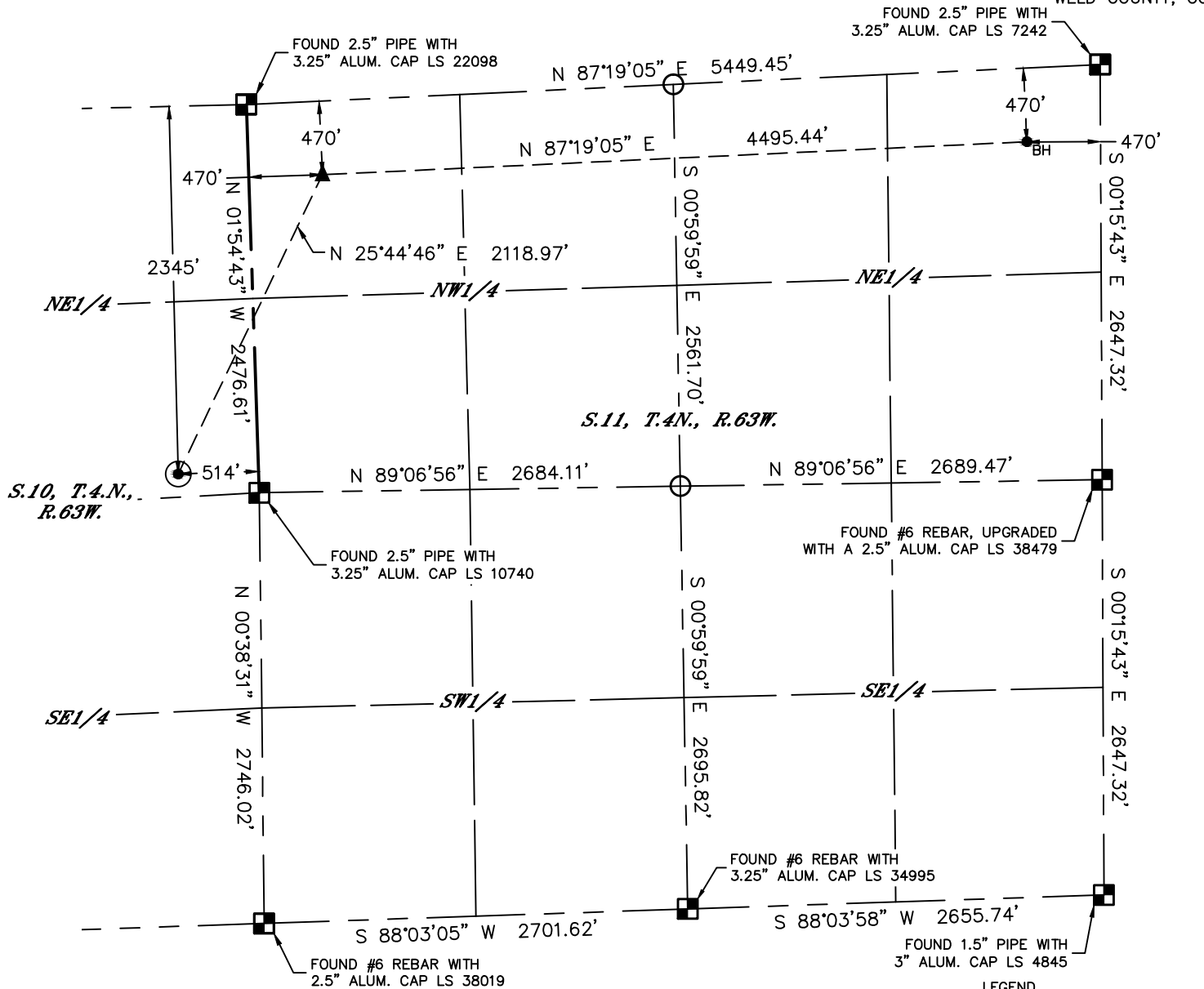


Lat40°, Inc. 6250 W. 10th Street, Unit 2, Greeley, CO 970-515-5294

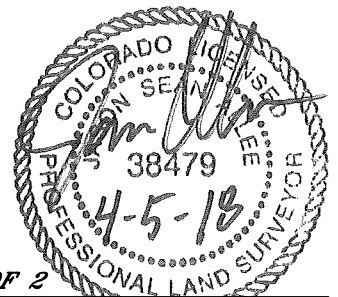
WELL LOCATION CERTIFICATE

70 RANCH-10-11-1

SECTION: 10
TOWNSHIP: 4N
RANGE: 63W
6TH. P.M.
WELD COUNTY, CO



- LEGEND
- = ALIQUOT MONUMENT AS DESCRIBED
 - = CALCULATED POSITION
 - = SURFACE HOLE LOCATION (SHL)
 - ▲ = ENTRY POINT LOCATION (EP)
 - BH = BOTTOM HOLE LOCATION (BHL)
 - ⊙ = EXISTING WELL
 - ⊙ = ABANDONED WELL



SHEET 2 OF 2

Jason S. Allee—On behalf of Lat40, Inc.
Colorado Licensed Professional Land Surveyor No. 38479
DATE: 4/5/2018
PROJECT#: 2016081