

OPERATOR: **Bill Barrett Corp.**  
WELL NAME: **AEF 4-62-28-0108CS**

FIELD NAME: DJ Basin - Wattenberg  
DRILLING RIG: Savanna 802  
API #: 05-123-43686

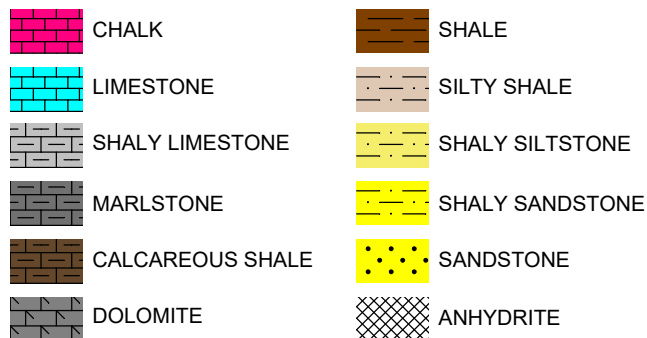
LAT/LONG: 40.287386, -104.337297  
SURFACE HOLE: NWNW S28-T4N-R62W, 951' FNL, 331' FWL  
BOTTOM HOLE: NENE S27-T4N-R62W, 530' FNL, 500' FEL



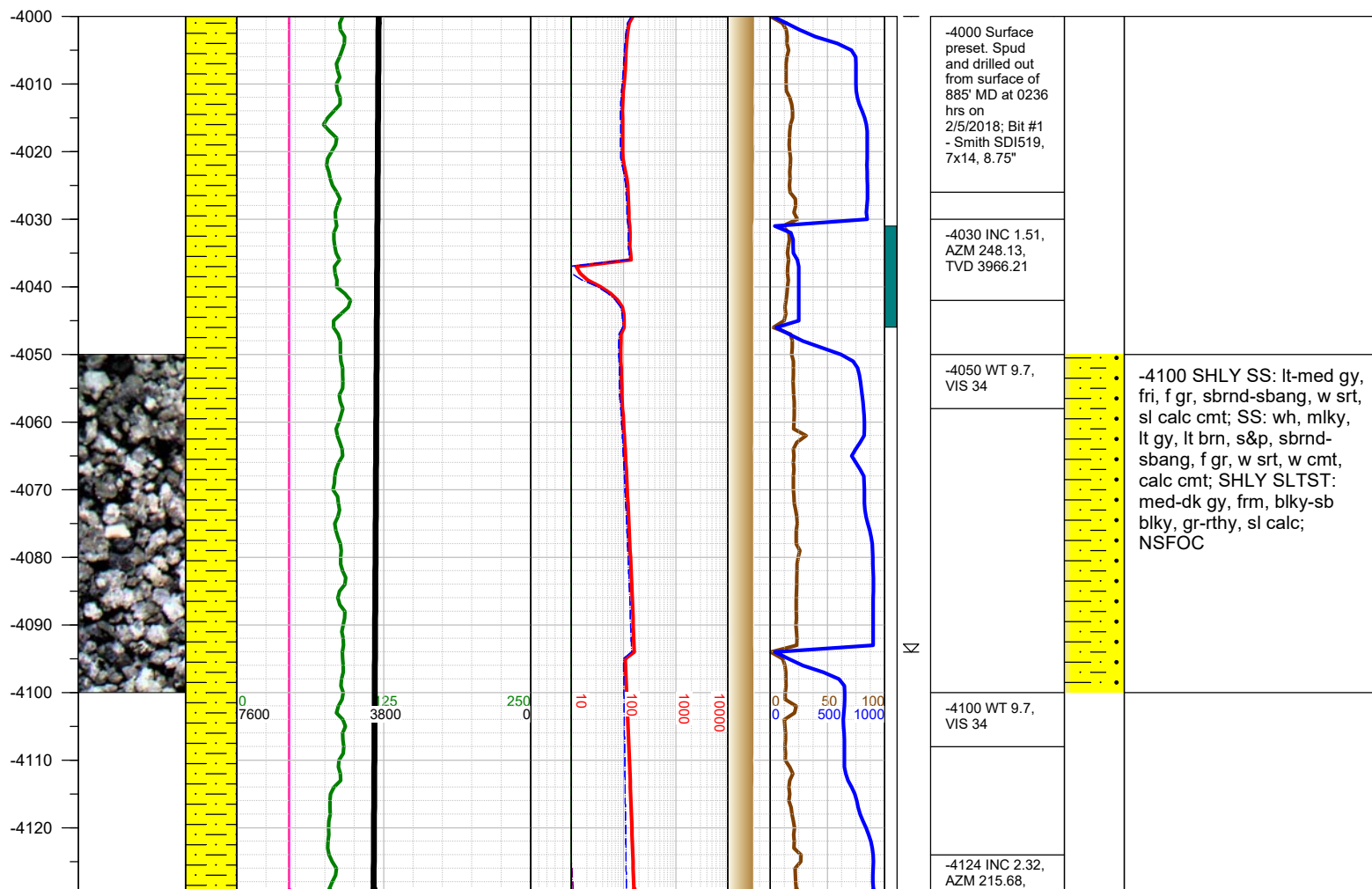
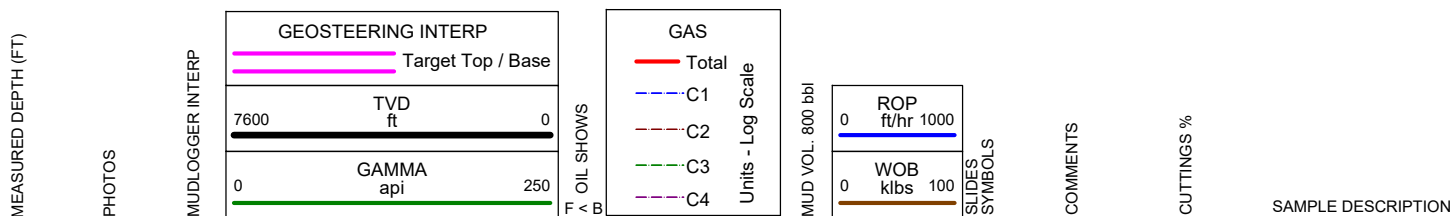
Earth Science Agency, LLC

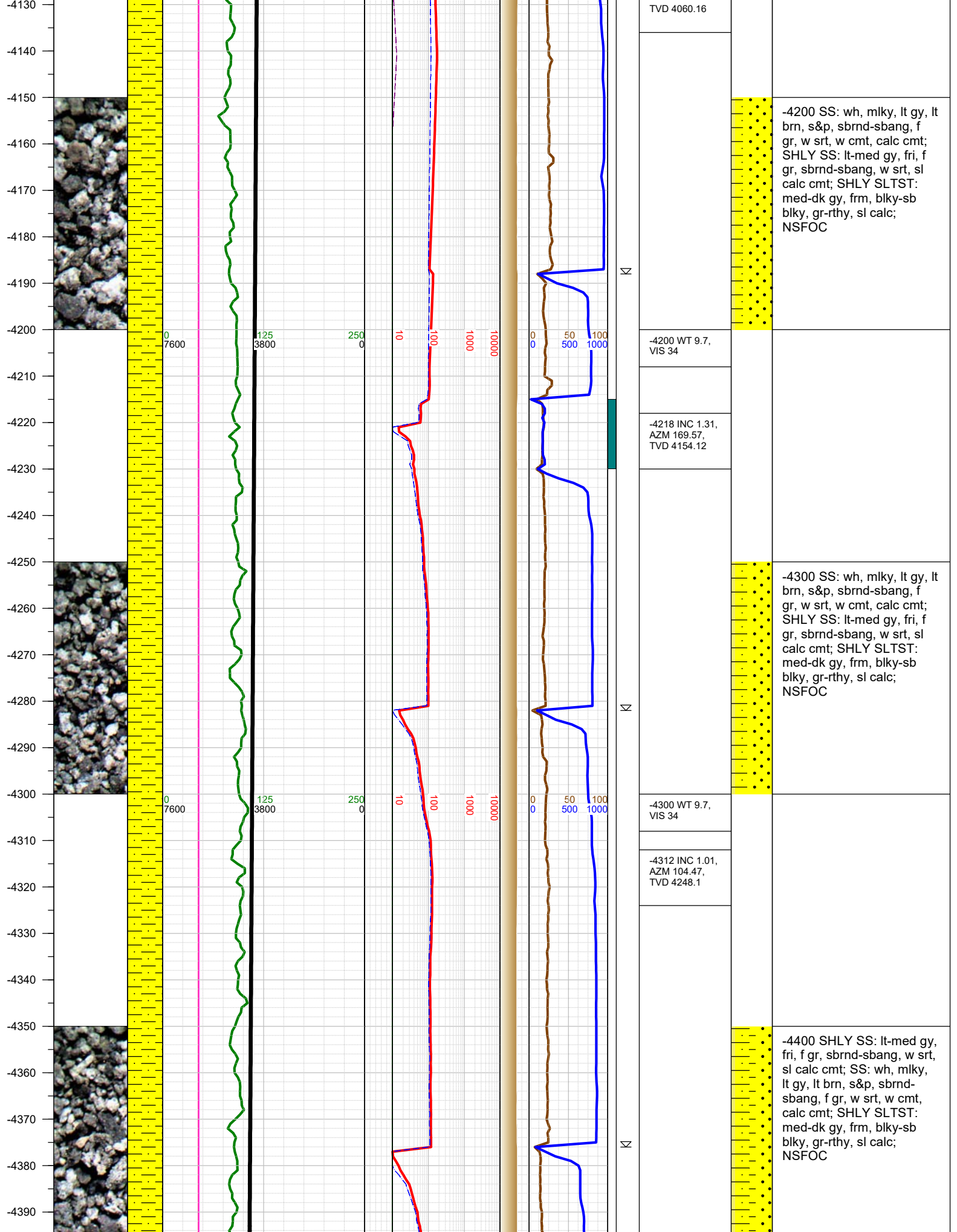
COUNTY: Weld  
STATE: Colorado  
GROUND ELEVATION: 4574'  
KELLY BUSHING: 4594'  
DRILLING FLUID: LSND  
TVD VS. MD: 6143' / 16220'  
SPUD DATE: February 5, 2018  
TD DATE: February 10, 2018  
DEPTHS LOGGED: 4000' - 16220'  
DATES LOGGED: February 5, 2018 - February 10, 2018  
GEOLOGISTS: Rob Semple, Scott Snoy  
SCALE: 5" = 100'

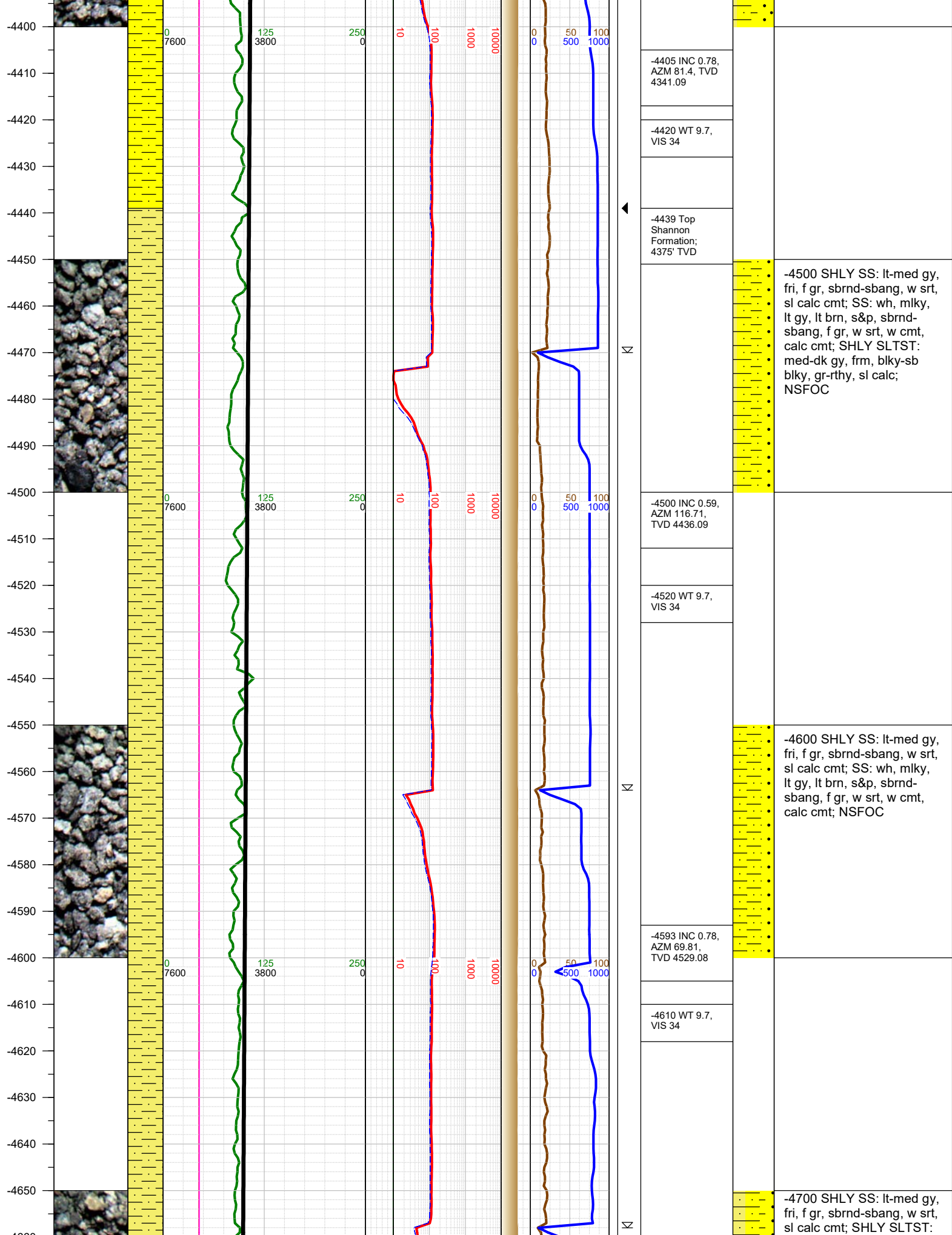
#### LEGEND



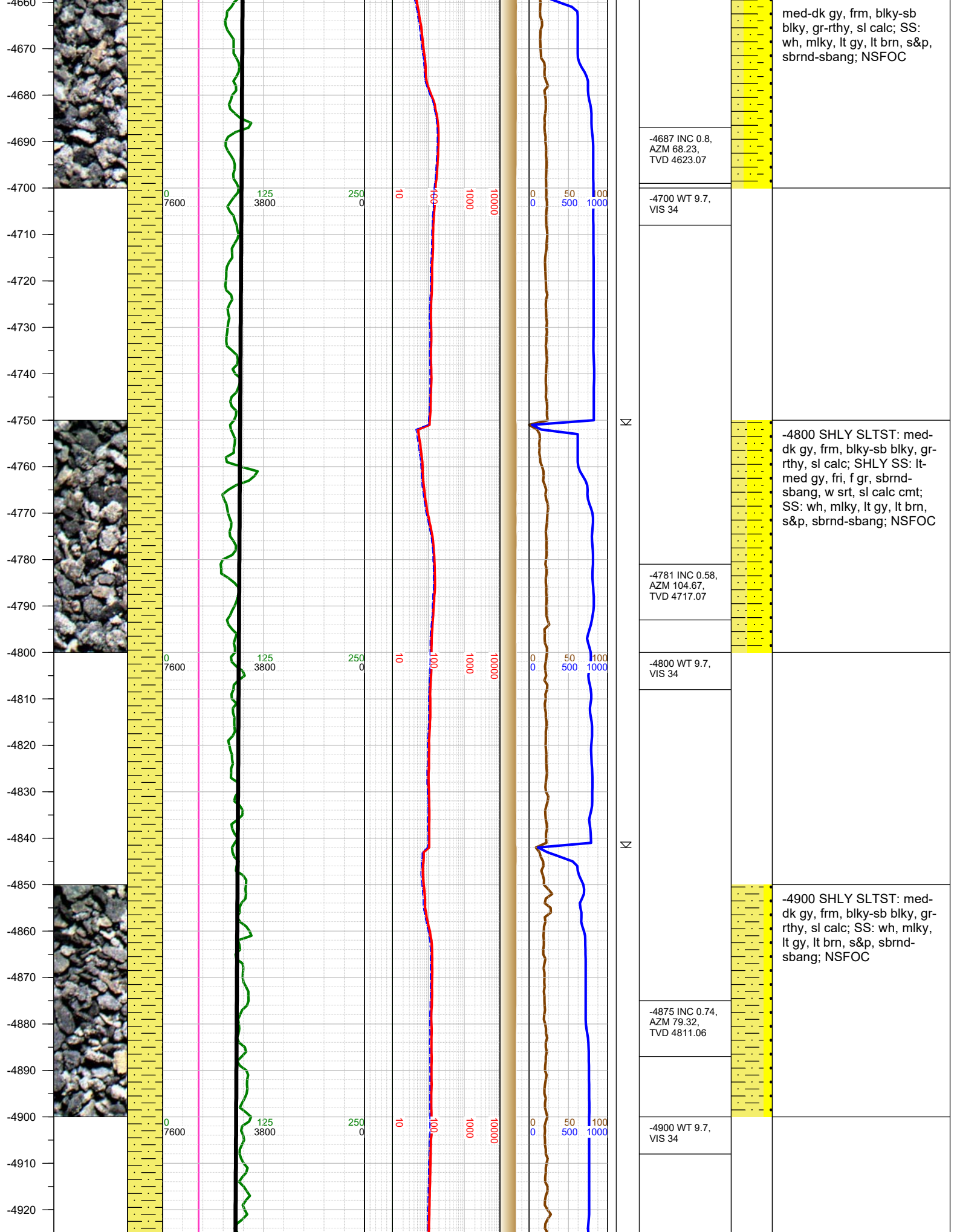
FORMATION CONNECTION MIDNIGHT NEW BIT GAS SHOW FAULT



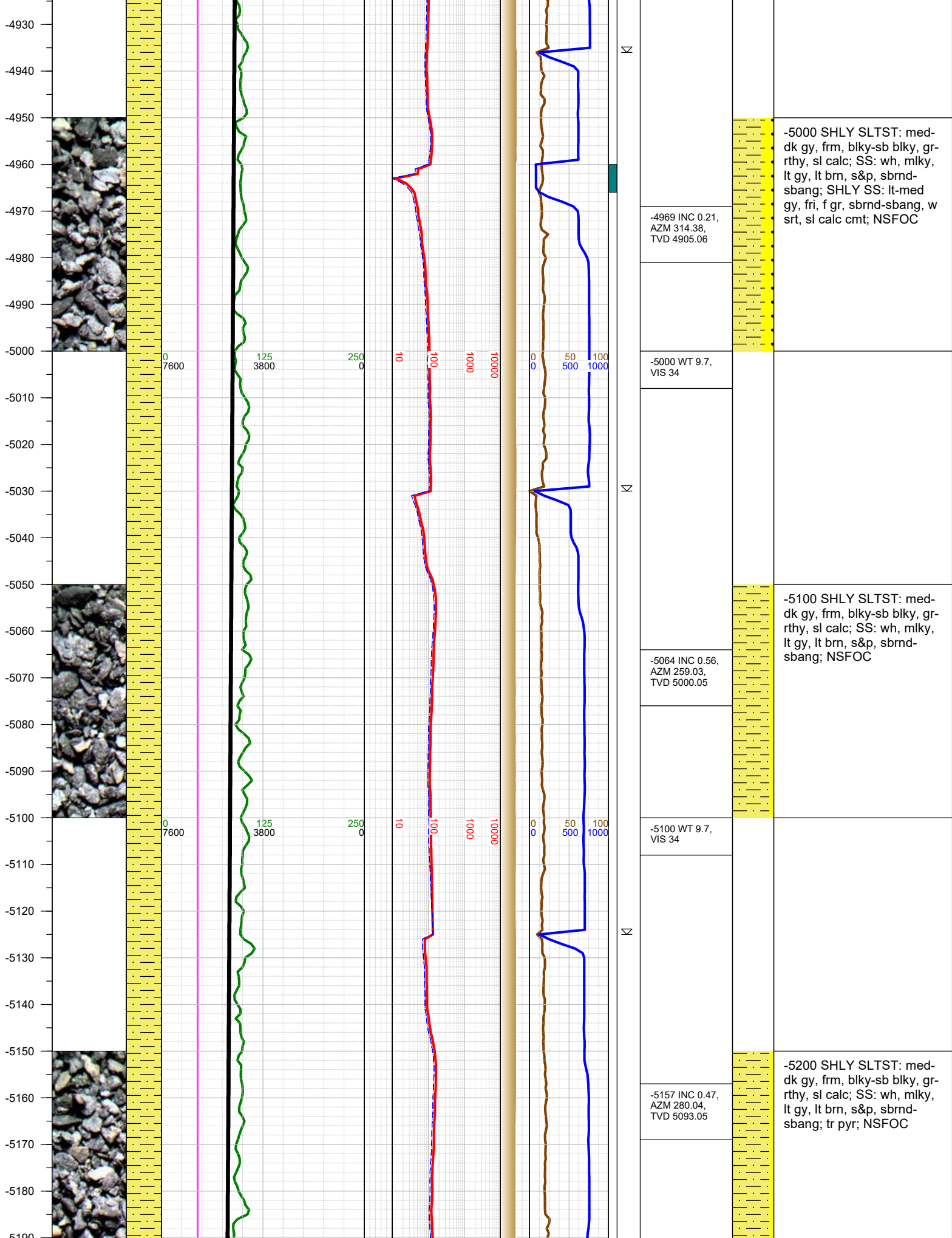


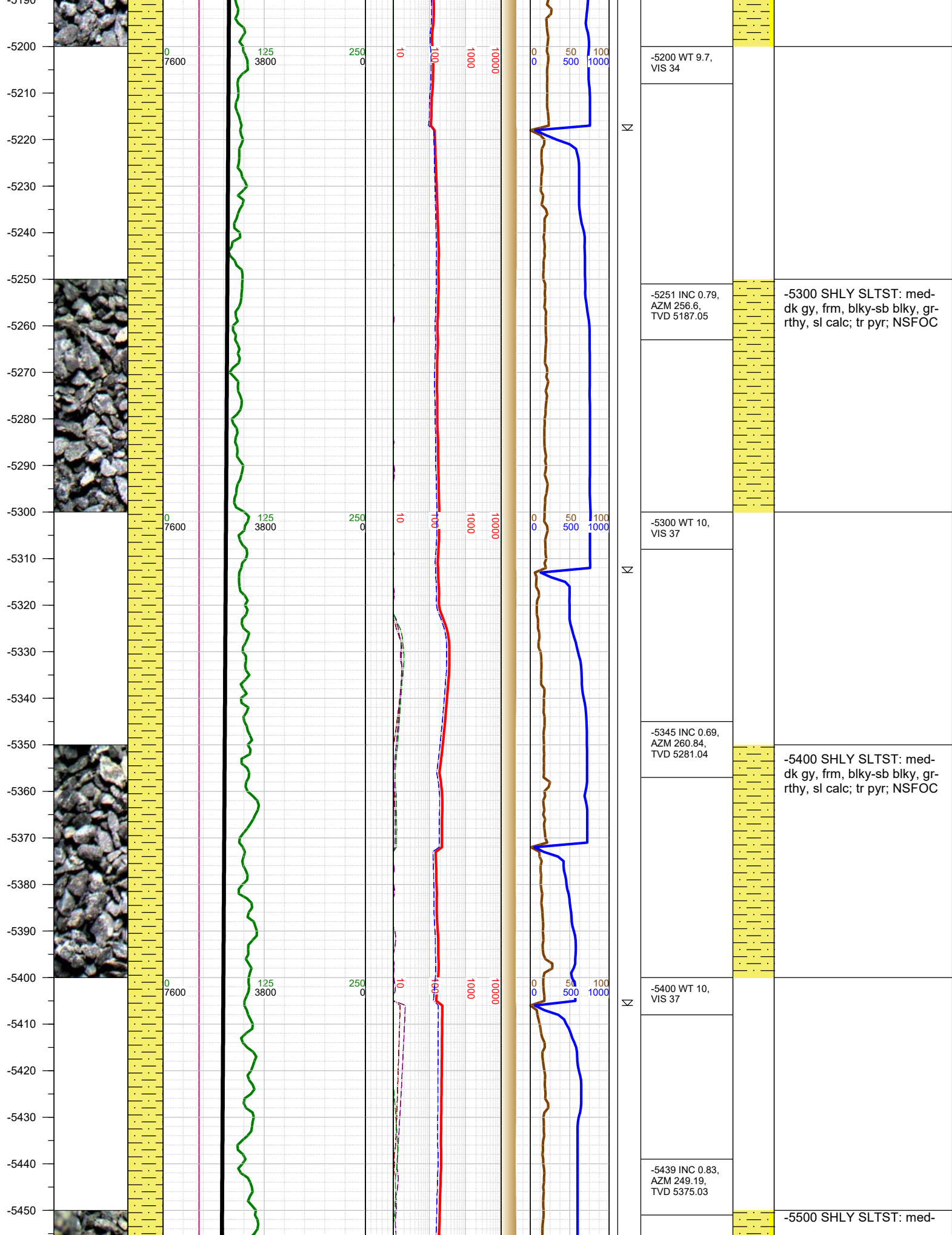


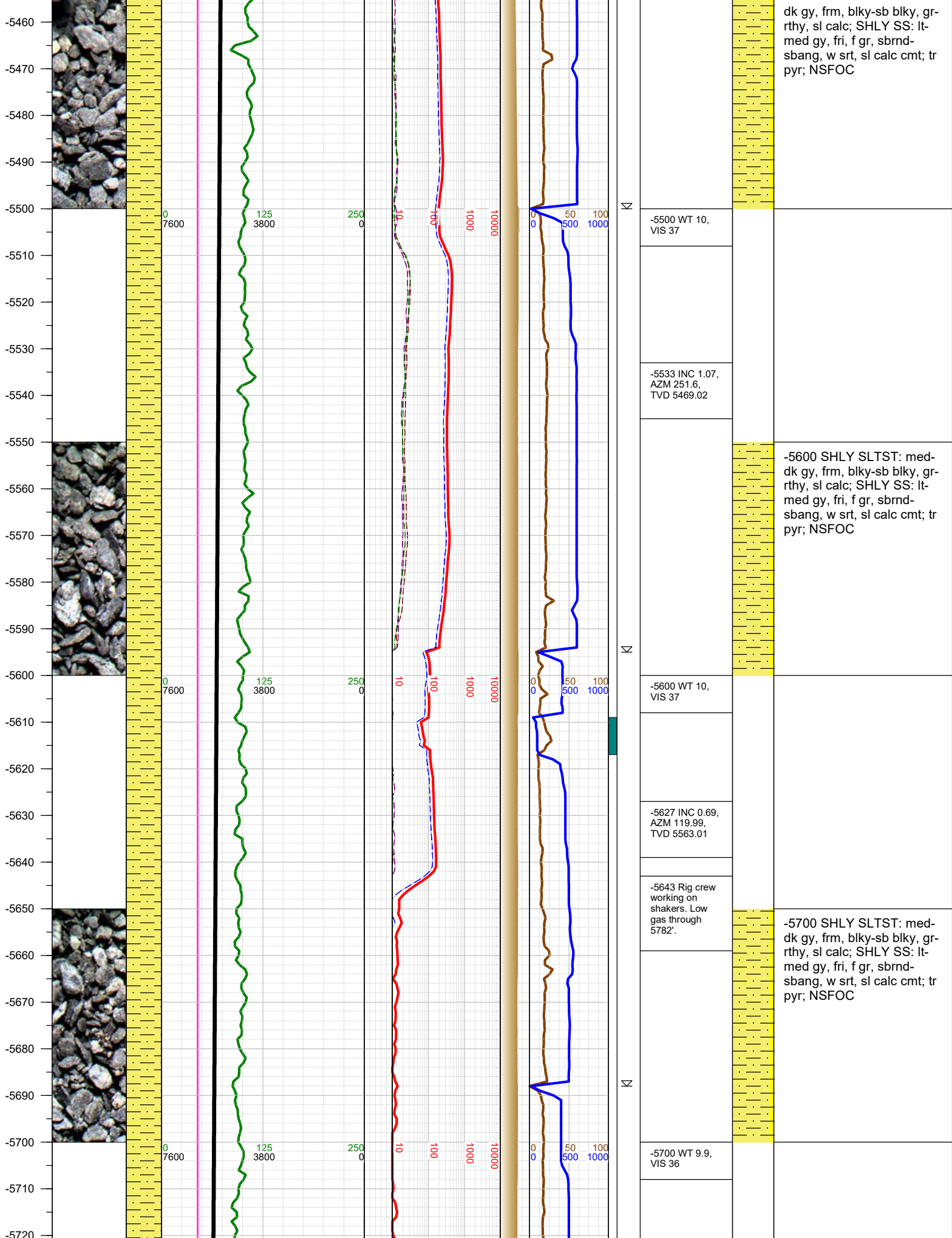




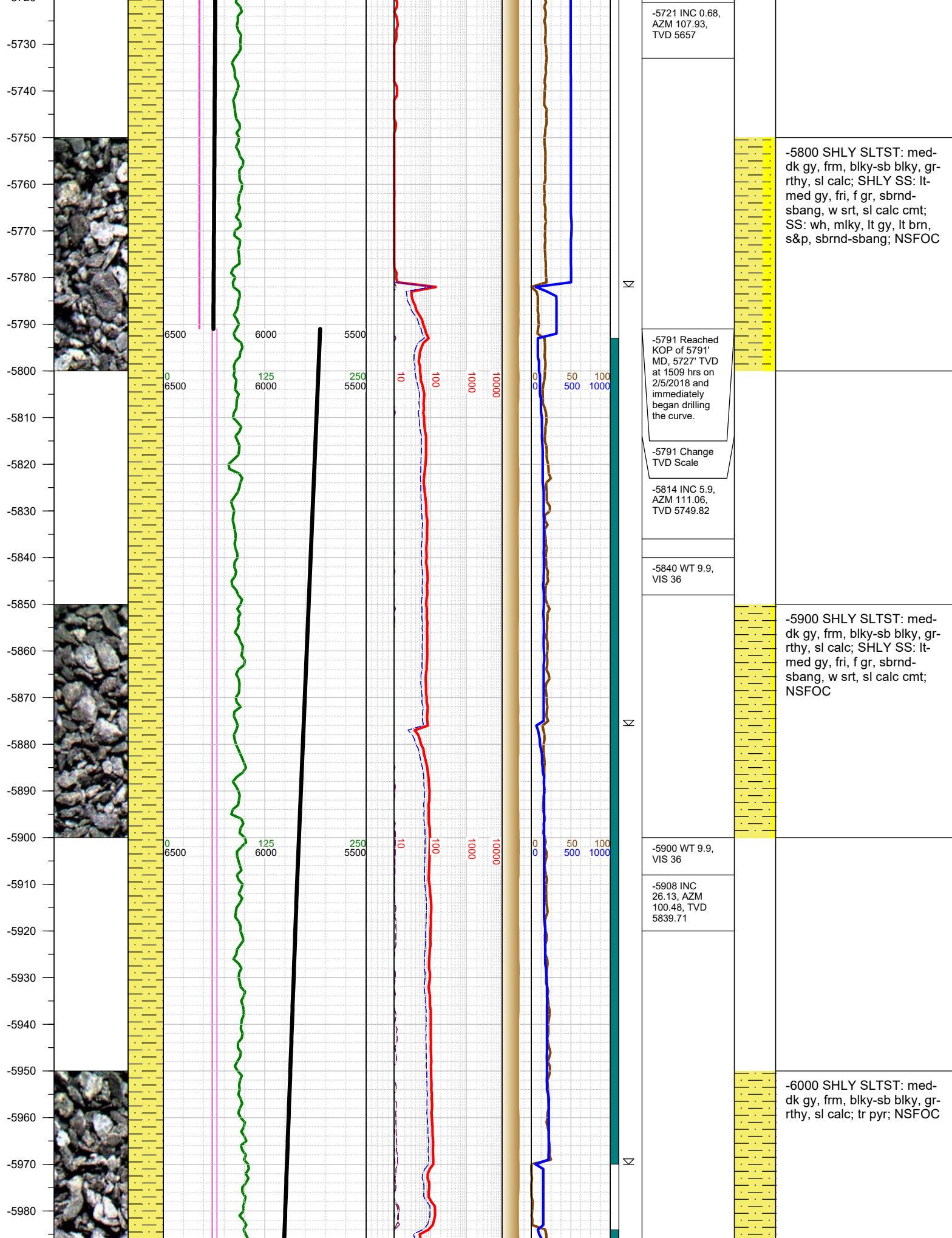












-5721 INC 0.68,  
AZM 107.93,  
TVD 5657

-5800 SHLY SLTST: med-  
dk gy, frm, blk-sb blk, gr-  
rthy, sl calc; SHLY SS: lt-  
med gy, fri, f gr, sbrnd-  
sbang, w srt, sl calc cmt;  
SS: wh, mlky, lt gy, lt brn,  
s&p, sbrnd-sbang; NSFOC

-5791 Reached  
KOP of 5791'  
MD, 5727' TVD  
at 1509 hrs on  
2/5/2018 and  
immediately  
began drilling  
the curve.

-5791 Change  
TVD Scale

-5814 INC 5.9,  
AZM 111.06,  
TVD 5749.82

-5840 WT 9.9,  
VIS 36

-5900 SHLY SLTST: med-  
dk gy, frm, blk-sb blk, gr-  
rthy, sl calc; SHLY SS: lt-  
med gy, fri, f gr, sbrnd-  
sbang, w srt, sl calc cmt;  
NSFOC

-5900 WT 9.9,  
VIS 36

-5908 INC  
26.13, AZM  
100.48, TVD  
5839.71

-6000 SHLY SLTST: med-  
dk gy, frm, blk-sb blk, gr-  
rthy, sl calc; tr pyr; NSFOC

