

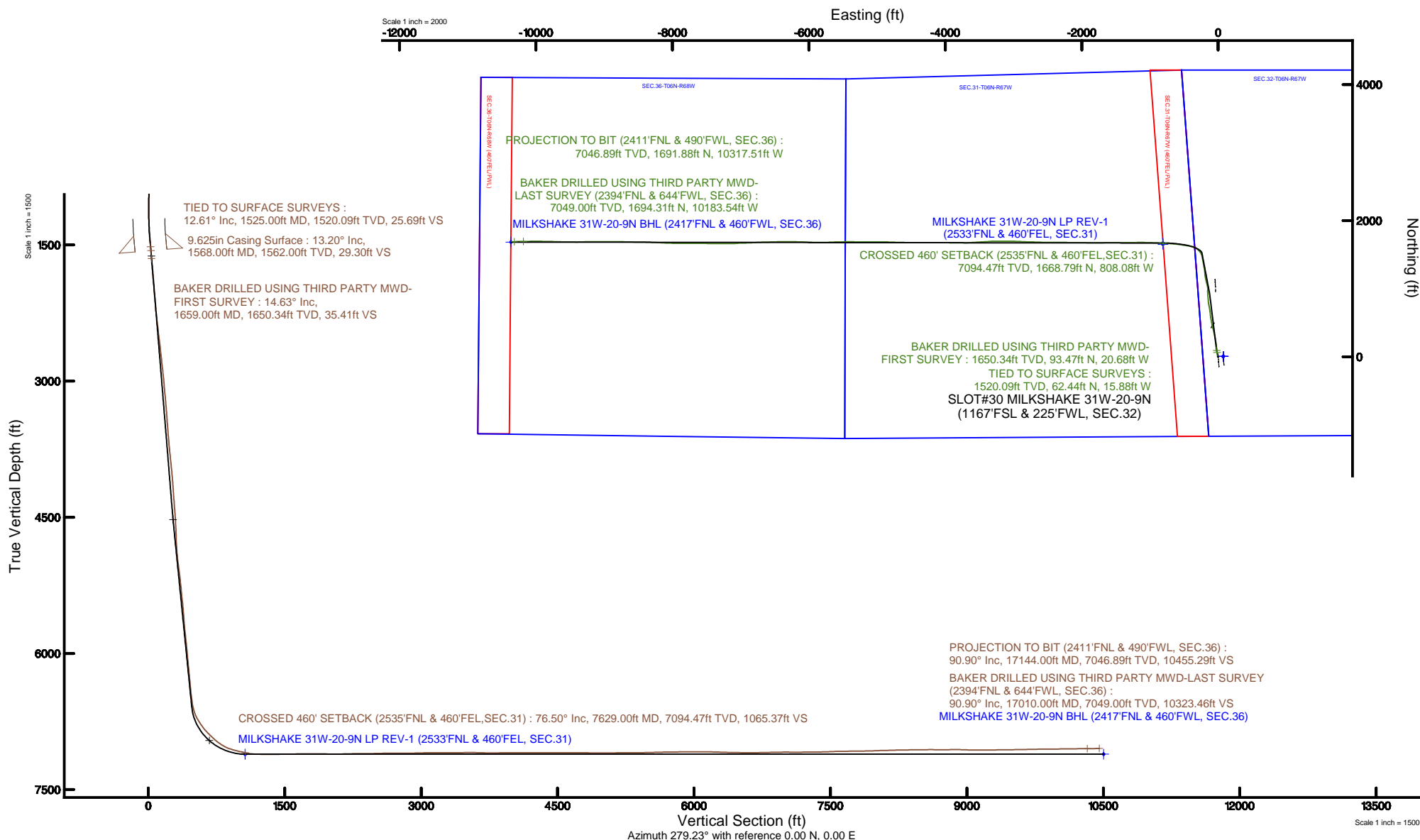
EXTRACTION OIL & GAS



Location: COLORADO	Slot: SLOT#30 MILKSHAKE 31W-20-9N (1167'FSL & 225'FWL, SEC.32)
Field: WELD COUNTY (NAD83/TRUE NORTH)	Well: MILKSHAKE 31W-20-9N
Facility: SEC.32-T06N-R67W	Wellbore: MILKSHAKE 31W-20-9N PWB
Plot reference wellpath is MILKSHAKE 31W-20-9N PWP (REV-A.0)	Grid System: NAD83 / Lambert Colorado SP, Northern Zone (501), US feet
True vertical depths are referenced to CYCLONE 37 (28KB) (RKB)	* = Wellpath was transformed from a different geodetic datum
Measured depths are referenced to CYCLONE 37 (28KB) (RKB)	North Reference: True north
CYCLONE 37 (28KB) (RKB) to Mean Sea Level: 4985 feet	Scale: True distance
Mean Sea Level to Mud line (At Slot: SLOT#30 MILKSHAKE 31W-20-9N (1167'FSL & 225'FWL, SEC.32)): 0 feet	Depths are in feet
Coordinates are in feet referenced to Slot	Created by: ingnjamr on 2018-01-17
	Database: Denver

BGGM (1900.0 to 2019.0) Dip: 66.84° Field: 52314.2 nT
Magnetic North is 8.42 degrees East of True North (at 12/19/2017)

To correct azimuth from Magnetic to True add 8.42 degrees





Actual Wellpath Report

MILKSHAKE 31W-20-9N AWP

Page 1 of 9



REFERENCE WELLPATH IDENTIFICATION

Operator	EXTRACTION OIL & GAS	Slot	SLOT#30 MILKSHAKE 31W-20-9N (1167'FSL & 225'FWL, SEC.32)
Area	COLORADO	Well	MILKSHAKE 31W-20-9N
Field	WELD COUNTY (NAD83/TRUE NORTH)	Wellbore	MILKSHAKE 31W-20-9N AWB
Facility	SEC.32-T06N-R67W		

REPORT SETUP INFORMATION

Projection System	NAD83 / Lambert Colorado SP, Northern Zone (501), US feet	Software System	WellArchitect® 5.0
North Reference	True	User	Ingmjmr
Scale	0.999962	Report Generated	1/17/2018 at 8:51:53 AM
Convergence at slot	0.38° East	Database/Source file	Denver/MILKSHAKE_31W-20-9N_AWP.xml

WELLPATH LOCATION

	Local coordinates		Grid coordinates		Geographic coordinates	
	North[ft]	East[ft]	Easting[US ft]	Northing[US ft]	Latitude	Longitude
Slot Location	-1038.70	41.75	3160169.49	1403349.25	40°26'21.008"N	104°55'28.452"W
Facility Reference Pt			3160121.00	1404387.61	40°26'31.272"N	104°55'28.992"W
Field Reference Pt			3185481.27	1419166.81	40°28'55.560"N	104°49'59.556"W

WELLPATH DATUM

Calculation method	Minimum curvature	CYCLONE 37 (28'KB) (RKB) to Facility Vertical Datum	4985.00ft
Horizontal Reference Pt	Slot	CYCLONE 37 (28'KB) (RKB) to Mean Sea Level	4985.00ft
Vertical Reference Pt	CYCLONE 37 (28'KB) (RKB)	CYCLONE 37 (28'KB) (RKB) to Mud Line at Slot (SLOT#30 MILKSHAKE 31W-20-9N (1167'FSL & 225'FWL, SEC.32))	4985.00ft
MD Reference Pt	CYCLONE 37 (28'KB) (RKB)	Section Origin	N 0.00, E 0.00 ft
Field Vertical Reference	Mean Sea Level	Section Azimuth	279.23°



Actual Wellpath Report

MILKSHAKE 31W-20-9N AWP

Page 2 of 9



REFERENCE WELLPATH IDENTIFICATION

Operator	EXTRACTION OIL & GAS	Slot	SLOT#30 MILKSHAKE 31W-20-9N (1167'FSL & 225'FWL, SEC.32)
Area	COLORADO	Well	MILKSHAKE 31W-20-9N
Field	WELD COUNTY (NAD83/TRUE NORTH)	Wellbore	MILKSHAKE 31W-20-9N AWB
Facility	SEC.32-T06N-R67W		

WELLPATH DATA (166 stations)

MD [ft]	Inclination [°]	Azimuth [°]	TVD [ft]	Vert Sect [ft]	North [ft]	East [ft]	Latitude	Longitude	DLS [°/100ft]	Comments
1525.00	12.610	345.140	1520.09	25.69	62.44	-15.88	40°26'21.625"N	104°55'28.657"W	1.22	TIED TO SURFACE SURVEYS
1659.00	14.630	356.470	1650.34	35.41	93.47	-20.68	40°26'21.932"N	104°55'28.719"W	2.49	BAKER DRILLED USING THIRD PARTY MWD-FIRST SURVEY
1753.00	18.520	353.650	1740.42	42.04	120.17	-23.06	40°26'22.195"N	104°55'28.750"W	4.22	
1848.00	18.030	354.090	1830.62	49.94	149.79	-26.24	40°26'22.488"N	104°55'28.791"W	0.54	
1943.00	17.540	353.300	1921.08	57.71	178.63	-29.43	40°26'22.773"N	104°55'28.833"W	0.57	
2037.00	16.880	352.730	2010.87	65.47	206.24	-32.80	40°26'23.046"N	104°55'28.876"W	0.72	
2131.00	15.780	351.360	2101.08	73.27	232.41	-36.45	40°26'23.305"N	104°55'28.923"W	1.24	
2225.00	15.420	350.440	2191.62	81.22	257.37	-40.45	40°26'23.551"N	104°55'28.975"W	0.46	
2320.00	17.900	348.230	2282.62	90.52	284.12	-45.52	40°26'23.816"N	104°55'29.041"W	2.69	
2414.00	16.920	347.310	2372.32	100.81	311.61	-51.48	40°26'24.087"N	104°55'29.118"W	1.08	
2509.00	17.150	347.480	2463.15	111.16	338.77	-57.55	40°26'24.356"N	104°55'29.196"W	0.25	
2603.00	17.540	347.000	2552.87	121.66	366.10	-63.74	40°26'24.626"N	104°55'29.276"W	0.44	
2698.00	16.840	346.340	2643.63	132.43	393.42	-70.21	40°26'24.896"N	104°55'29.360"W	0.76	
2792.00	15.290	345.410	2733.96	142.73	418.65	-76.55	40°26'25.145"N	104°55'29.442"W	1.67	
2887.00	14.140	344.310	2825.84	152.68	441.94	-82.84	40°26'25.375"N	104°55'29.523"W	1.25	
2981.00	16.840	349.200	2916.42	162.18	466.38	-88.50	40°26'25.617"N	104°55'29.597"W	3.19	
3076.00	15.600	349.160	3007.64	171.28	492.44	-93.48	40°26'25.874"N	104°55'29.661"W	1.31	
3170.00	14.050	349.380	3098.51	179.50	516.07	-97.96	40°26'26.108"N	104°55'29.719"W	1.65	
3264.00	15.600	349.200	3189.37	187.70	539.70	-102.43	40°26'26.341"N	104°55'29.777"W	1.65	
3359.00	14.230	350.700	3281.17	195.79	563.77	-106.71	40°26'26.579"N	104°55'29.832"W	1.50	
3453.00	15.330	352.070	3372.06	203.13	587.48	-110.29	40°26'26.813"N	104°55'29.878"W	1.23	
3548.00	14.490	354.400	3463.86	209.88	611.75	-113.19	40°26'27.053"N	104°55'29.916"W	1.09	
3642.00	15.380	354.180	3554.68	216.12	635.85	-115.60	40°26'27.291"N	104°55'29.947"W	0.95	
3737.00	16.660	351.320	3646.00	223.59	661.85	-118.93	40°26'27.548"N	104°55'29.990"W	1.58	
3831.00	16.920	350.790	3735.99	232.06	688.67	-123.15	40°26'27.813"N	104°55'30.045"W	0.32	
3926.00	17.230	349.290	3826.80	241.23	716.14	-127.98	40°26'28.085"N	104°55'30.107"W	0.57	
4021.00	16.880	349.030	3917.62	250.79	743.51	-133.22	40°26'28.355"N	104°55'30.175"W	0.38	
4116.00	14.630	348.320	4009.05	259.84	768.80	-138.27	40°26'28.605"N	104°55'30.240"W	2.38	
4210.00	15.860	354.230	4099.74	267.40	793.21	-141.97	40°26'28.846"N	104°55'30.288"W	2.11	
4305.00	17.500	356.870	4190.74	273.82	820.39	-144.05	40°26'29.115"N	104°55'30.315"W	1.90	



Actual Wellpath Report

MILKSHAKE 31W-20-9N AWP

Page 3 of 9



REFERENCE WELLPATH IDENTIFICATION

Operator	EXTRACTION OIL & GAS	Slot	SLOT#30 MILKSHAKE 31W-20-9N (1167'FSL & 225'FWL, SEC.32)
Area	COLORADO	Well	MILKSHAKE 31W-20-9N
Field	WELD COUNTY (NAD83/TRUE NORTH)	Wellbore	MILKSHAKE 31W-20-9N AWB
Facility	SEC.32-T06N-R67W		

WELLPATH DATA (166 stations)

MD [ft]	Inclination [°]	Azimuth [°]	TVD [ft]	Vert Sect [ft]	North [ft]	East [ft]	Latitude	Longitude	DLS [°/100ft]	Comments
4400.00	15.910	354.980	4281.73	280.09	847.62	-145.97	40°26'29.384"N	104°55'30.340"W	1.77	
4494.00	18.340	353.960	4371.56	287.15	875.17	-148.66	40°26'29.656"N	104°55'30.375"W	2.60	
4589.00	17.630	357.090	4461.92	294.12	904.40	-150.96	40°26'29.945"N	104°55'30.404"W	1.26	
4683.00	15.730	358.240	4551.96	299.54	931.36	-152.07	40°26'30.211"N	104°55'30.419"W	2.05	
4778.00	13.650	357.660	4643.85	304.25	955.43	-152.93	40°26'30.449"N	104°55'30.430"W	2.19	
4872.00	13.040	4.580	4735.32	307.33	977.09	-152.53	40°26'30.663"N	104°55'30.425"W	1.82	
4989.00	17.410	356.610	4848.20	312.23	1007.73	-152.52	40°26'30.966"N	104°55'30.425"W	4.13	
5084.00	16.700	347.220	4939.03	320.46	1035.24	-156.38	40°26'31.238"N	104°55'30.474"W	2.99	
5178.00	17.810	343.910	5028.80	331.67	1062.22	-163.35	40°26'31.504"N	104°55'30.565"W	1.58	
5272.00	16.220	345.990	5118.69	343.00	1088.78	-170.51	40°26'31.767"N	104°55'30.657"W	1.81	
5367.00	15.550	346.340	5210.06	353.19	1114.02	-176.73	40°26'32.016"N	104°55'30.738"W	0.71	
5461.00	16.390	351.670	5300.44	362.09	1139.39	-181.63	40°26'32.267"N	104°55'30.801"W	1.80	
5556.00	16.920	347.790	5391.45	371.19	1166.17	-186.49	40°26'32.532"N	104°55'30.864"W	1.30	
5650.00	16.570	349.860	5481.47	380.64	1192.73	-191.75	40°26'32.794"N	104°55'30.932"W	0.74	
5745.00	17.540	356.910	5572.30	388.19	1220.36	-194.90	40°26'33.067"N	104°55'30.973"W	2.40	
5839.00	19.660	356.740	5661.38	394.63	1250.30	-196.57	40°26'33.363"N	104°55'30.994"W	2.26	
5933.00	17.370	349.160	5750.53	402.87	1279.87	-200.11	40°26'33.655"N	104°55'31.040"W	3.53	
6028.00	17.100	348.890	5841.26	412.59	1307.51	-205.46	40°26'33.928"N	104°55'31.109"W	0.30	
6122.00	17.190	351.270	5931.08	421.68	1334.80	-210.23	40°26'34.198"N	104°55'31.171"W	0.75	
6217.00	15.470	349.820	6022.25	430.22	1361.14	-214.60	40°26'34.458"N	104°55'31.228"W	1.86	
6311.00	16.130	350.220	6112.70	438.64	1386.35	-219.04	40°26'34.707"N	104°55'31.285"W	0.71	
6406.00	15.290	348.100	6204.15	447.46	1411.61	-223.86	40°26'34.957"N	104°55'31.347"W	1.07	
6500.00	15.860	351.190	6294.70	455.91	1436.43	-228.39	40°26'35.202"N	104°55'31.406"W	1.07	
6595.00	16.000	348.230	6386.05	464.62	1462.08	-233.05	40°26'35.456"N	104°55'31.466"W	0.87	
6690.00	14.580	344.880	6477.69	474.24	1486.44	-238.84	40°26'35.696"N	104°55'31.541"W	1.76	
6784.00	16.530	333.910	6568.26	486.86	1509.88	-247.81	40°26'35.928"N	104°55'31.657"W	3.75	
6879.00	27.220	323.910	6656.32	510.20	1539.67	-266.61	40°26'36.222"N	104°55'31.900"W	11.88	
6973.00	35.840	313.730	6736.42	548.26	1576.16	-299.24	40°26'36.583"N	104°55'32.322"W	10.75	
7067.00	38.530	295.180	6811.54	599.27	1607.75	-345.78	40°26'36.895"N	104°55'32.924"W	12.23	
7162.00	44.630	277.990	6882.81	661.34	1625.05	-405.86	40°26'37.066"N	104°55'33.701"W	13.57	



Actual Wellpath Report

MILKSHAKE 31W-20-9N AWP

Page 4 of 9



REFERENCE WELLPATH IDENTIFICATION

Operator	EXTRACTION OIL & GAS	Slot	SLOT#30 MILKSHAKE 31W-20-9N (1167'FSL & 225'FWL, SEC.32)
Area	COLORADO	Well	MILKSHAKE 31W-20-9N
Field	WELD COUNTY (NAD83/TRUE NORTH)	Wellbore	MILKSHAKE 31W-20-9N AWP
Facility	SEC.32-T06N-R67W		

WELLPATH DATA (166 stations) † = interpolated/extrapolated station

MD [ft]	Inclination [°]	Azimuth [°]	TVD [ft]	Vert Sect [ft]	North [ft]	East [ft]	Latitude	Longitude	DLS [°/100ft]	Comments
7257.00	48.560	278.650	6948.07	730.34	1635.05	-474.13	40°26'37.165"N	104°55'34.584"W	4.17	
7351.00	55.900	279.440	7005.61	804.59	1646.75	-547.46	40°26'37.280"N	104°55'35.533"W	7.84	
7446.00	71.230	274.860	7047.79	889.31	1657.07	-631.61	40°26'37.382"N	104°55'36.621"W	16.70	
7541.00	76.670	273.450	7074.05	980.21	1663.67	-722.63	40°26'37.448"N	104°55'37.798"W	5.90	
7629.00†	76.501	273.413	7094.47	1065.37	1668.79	-808.08	40°26'37.498"N	104°55'38.903"W	0.20	CROSSED 406' SETBACK (2535'FNL & 460'FEL, SEC.31)
7635.00	76.490	273.410	7095.87	1071.17	1669.14	-813.90	40°26'37.502"N	104°55'38.979"W	0.20	
7730.00	87.980	272.310	7108.68	1164.56	1673.82	-907.75	40°26'37.548"N	104°55'40.193"W	12.15	
7825.00	89.700	271.950	7110.60	1258.81	1677.35	-1002.66	40°26'37.583"N	104°55'41.420"W	1.85	
7919.00	90.190	270.370	7110.70	1351.87	1679.25	-1096.64	40°26'37.601"N	104°55'42.636"W	1.76	
8014.00	90.410	269.310	7110.20	1445.60	1678.98	-1191.64	40°26'37.599"N	104°55'43.864"W	1.14	
8108.00	90.720	269.570	7109.27	1538.22	1678.07	-1285.63	40°26'37.590"N	104°55'45.080"W	0.43	
8203.00	91.600	269.180	7107.35	1631.80	1677.03	-1380.60	40°26'37.579"N	104°55'46.308"W	1.01	
8298.00	90.010	270.590	7106.01	1725.52	1676.84	-1475.59	40°26'37.577"N	104°55'47.537"W	2.24	
8392.00	89.840	269.880	7106.14	1818.37	1677.23	-1569.59	40°26'37.581"N	104°55'48.753"W	0.78	
8487.00	89.090	268.780	7107.02	1911.94	1676.11	-1664.57	40°26'37.570"N	104°55'49.981"W	1.40	
8581.00	89.130	268.780	7108.48	2004.37	1674.11	-1758.54	40°26'37.550"N	104°55'51.197"W	0.04	
8674.00	90.990	271.340	7108.39	2096.17	1674.21	-1851.53	40°26'37.551"N	104°55'52.399"W	3.40	
8768.00	91.690	270.670	7106.19	2189.18	1675.86	-1945.49	40°26'37.567"N	104°55'53.614"W	1.03	
8863.00	90.320	270.670	7104.52	2283.10	1676.97	-2040.46	40°26'37.578"N	104°55'54.843"W	1.44	
8958.00	90.230	270.590	7104.07	2377.03	1678.01	-2135.46	40°26'37.588"N	104°55'56.071"W	0.13	
9052.00	91.210	271.070	7102.88	2470.01	1679.38	-2229.44	40°26'37.602"N	104°55'57.287"W	1.16	
9147.00	91.470	269.930	7100.66	2563.88	1680.20	-2324.41	40°26'37.610"N	104°55'58.515"W	1.23	
9242.00	91.030	270.590	7098.59	2657.70	1680.64	-2419.38	40°26'37.614"N	104°55'59.744"W	0.83	
9336.00	89.400	270.320	7098.24	2750.59	1681.38	-2513.38	40°26'37.621"N	104°56'00.959"W	1.76	
9431.00	90.100	271.560	7098.65	2844.60	1682.94	-2608.36	40°26'37.637"N	104°56'02.188"W	1.50	
9526.00	91.520	271.860	7097.31	2938.77	1685.77	-2703.31	40°26'37.665"N	104°56'03.416"W	1.53	
9620.00	91.340	271.290	7094.96	3031.90	1688.36	-2797.24	40°26'37.690"N	104°56'04.631"W	0.64	
9716.00	89.930	273.540	7093.90	3127.21	1692.40	-2893.14	40°26'37.730"N	104°56'05.871"W	2.77	
9811.00	89.700	270.900	7094.21	3221.49	1696.08	-2988.06	40°26'37.766"N	104°56'07.099"W	2.79	
9905.00	89.930	270.010	7094.51	3314.38	1696.83	-3082.06	40°26'37.773"N	104°56'08.315"W	0.98	



Actual Wellpath Report

MILKSHAKE 31W-20-9N AWP

Page 5 of 9



REFERENCE WELLPATH IDENTIFICATION

Operator	EXTRACTION OIL & GAS	Slot	SLOT#30 MILKSHAKE 31W-20-9N (1167'FSL & 225'FWL, SEC.32)
Area	COLORADO	Well	MILKSHAKE 31W-20-9N
Field	WELD COUNTY (NAD83/TRUE NORTH)	Wellbore	MILKSHAKE 31W-20-9N AWP
Facility	SEC.32-T06N-R67W		

WELLPATH DATA (166 stations)

MD [ft]	Inclination [°]	Azimuth [°]	TVD [ft]	Vert Sect [ft]	North [ft]	East [ft]	Latitude	Longitude	DLS [°/100ft]	Comments
10000.00	91.030	271.690	7093.71	3408.36	1698.24	-3177.04	40°26'37.787"N	104°56'09.543"W	2.11	
10095.00	90.810	268.210	7092.19	3502.09	1698.15	-3272.01	40°26'37.786"N	104°56'10.771"W	3.67	
10189.00	88.690	266.220	7092.60	3594.02	1693.59	-3365.89	40°26'37.741"N	104°56'11.986"W	3.09	
10284.00	88.730	266.440	7094.74	3686.60	1687.51	-3460.67	40°26'37.681"N	104°56'13.211"W	0.24	
10379.00	89.790	267.020	7095.96	3779.33	1682.09	-3555.51	40°26'37.627"N	104°56'14.438"W	1.27	
10474.00	91.300	266.890	7095.06	3872.15	1677.04	-3650.36	40°26'37.577"N	104°56'15.665"W	1.60	
10569.00	90.630	270.060	7093.46	3965.46	1674.52	-3745.30	40°26'37.552"N	104°56'16.893"W	3.41	
10663.00	89.570	270.410	7093.30	4058.30	1674.90	-3839.30	40°26'37.556"N	104°56'18.109"W	1.19	
10758.00	89.840	270.540	7093.78	4152.19	1675.69	-3934.30	40°26'37.563"N	104°56'19.337"W	0.32	
10853.00	90.280	270.450	7093.68	4246.09	1676.51	-4029.29	40°26'37.571"N	104°56'20.566"W	0.47	
10947.00	89.400	269.530	7093.95	4338.87	1676.49	-4123.29	40°26'37.571"N	104°56'21.782"W	1.35	
11042.00	89.790	270.230	7094.62	4432.60	1676.30	-4218.29	40°26'37.569"N	104°56'23.010"W	0.84	
11137.00	90.370	270.410	7094.49	4526.45	1676.83	-4313.29	40°26'37.574"N	104°56'24.239"W	0.64	
11231.00	91.120	269.620	7093.26	4619.23	1676.85	-4407.28	40°26'37.574"N	104°56'25.455"W	1.16	
11326.00	89.170	270.850	7093.02	4713.05	1677.24	-4502.27	40°26'37.578"N	104°56'26.683"W	2.43	
11421.00	89.000	271.290	7094.54	4807.08	1679.01	-4597.24	40°26'37.595"N	104°56'27.912"W	0.50	
11516.00	89.260	271.600	7095.98	4901.19	1681.41	-4692.20	40°26'37.619"N	104°56'29.140"W	0.43	
11611.00	89.350	271.690	7097.14	4995.35	1684.14	-4787.15	40°26'37.645"N	104°56'30.368"W	0.13	
11705.00	91.160	271.730	7096.72	5088.54	1686.94	-4881.11	40°26'37.673"N	104°56'31.583"W	1.93	
11800.00	92.000	269.310	7094.10	5182.40	1687.80	-4976.06	40°26'37.681"N	104°56'32.811"W	2.70	
11894.00	89.620	268.960	7092.77	5274.93	1686.38	-5070.03	40°26'37.667"N	104°56'34.027"W	2.56	
11989.00	90.010	270.760	7093.08	5368.65	1686.15	-5165.03	40°26'37.664"N	104°56'35.255"W	1.94	
12084.00	90.630	270.980	7092.54	5462.64	1687.59	-5260.01	40°26'37.679"N	104°56'36.484"W	0.69	
12178.00	91.870	271.420	7090.49	5555.69	1689.56	-5353.97	40°26'37.698"N	104°56'37.699"W	1.40	
12273.00	91.210	269.040	7087.94	5649.48	1689.94	-5448.93	40°26'37.701"N	104°56'38.927"W	2.60	
12368.00	90.410	268.690	7086.60	5742.92	1688.06	-5543.90	40°26'37.683"N	104°56'40.155"W	0.92	
12462.00	91.740	268.080	7084.83	5835.22	1685.41	-5637.84	40°26'37.656"N	104°56'41.370"W	1.56	
12557.00	89.700	267.150	7083.64	5928.26	1681.46	-5732.74	40°26'37.617"N	104°56'42.598"W	2.36	
12652.00	89.220	270.320	7084.54	6021.66	1679.36	-5827.70	40°26'37.596"N	104°56'43.826"W	3.37	
12747.00	90.720	271.820	7084.59	6115.69	1681.14	-5922.68	40°26'37.613"N	104°56'45.054"W	2.23	



Actual Wellpath Report

MILKSHAKE 31W-20-9N AWP

Page 6 of 9



REFERENCE WELLPATH IDENTIFICATION			
Operator	EXTRACTION OIL & GAS	Slot	SLOT#30 MILKSHAKE 31W-20-9N (1167'FSL & 225'FWL, SEC.32)
Area	COLORADO	Well	MILKSHAKE 31W-20-9N
Field	WELD COUNTY (NAD83/TRUE NORTH)	Wellbore	MILKSHAKE 31W-20-9N AWP
Facility	SEC.32-T06N-R67W		

WELLPATH DATA (166 stations)										
MD [ft]	Inclination [°]	Azimuth [°]	TVD [ft]	Vert Sect [ft]	North [ft]	East [ft]	Latitude	Longitude	DLS [°/100ft]	Comments
12842.00	88.330	271.690	7085.37	6209.87	1684.05	-6017.63	40°26'37.642"N	104°56'46.283"W	2.52	
12937.00	88.070	272.220	7088.36	6304.06	1687.29	-6112.53	40°26'37.674"N	104°56'47.510"W	0.62	
13032.00	88.820	270.810	7090.94	6398.16	1689.80	-6207.45	40°26'37.698"N	104°56'48.738"W	1.68	
13127.00	89.130	270.190	7092.63	6492.04	1690.63	-6302.43	40°26'37.706"N	104°56'49.966"W	0.73	
13222.00	89.400	270.060	7093.85	6585.84	1690.83	-6397.43	40°26'37.708"N	104°56'51.195"W	0.32	
13316.00	91.070	267.280	7093.47	6678.23	1688.65	-6491.39	40°26'37.686"N	104°56'52.410"W	3.45	
13411.00	91.300	268.600	7091.50	6771.37	1685.24	-6586.30	40°26'37.652"N	104°56'53.638"W	1.41	
13506.00	90.900	268.210	7089.68	6864.66	1682.59	-6681.25	40°26'37.626"N	104°56'54.866"W	0.59	
13601.00	91.210	266.620	7087.93	6957.63	1678.31	-6776.13	40°26'37.583"N	104°56'56.093"W	1.70	
13696.00	89.040	267.900	7087.72	7050.55	1673.77	-6871.02	40°26'37.538"N	104°56'57.320"W	2.65	
13790.00	90.540	269.490	7088.07	7142.96	1671.63	-6964.99	40°26'37.517"N	104°56'58.535"W	2.33	
13885.00	90.060	265.170	7087.57	7235.90	1667.20	-7059.86	40°26'37.473"N	104°56'59.762"W	4.58	
13979.00	91.070	270.150	7086.64	7327.95	1663.37	-7153.75	40°26'37.434"N	104°57'00.977"W	5.41	
14074.00	91.340	270.410	7084.64	7421.77	1663.83	-7248.72	40°26'37.439"N	104°57'02.205"W	0.39	
14169.00	92.440	269.880	7081.51	7515.53	1664.07	-7343.67	40°26'37.441"N	104°57'03.433"W	1.29	
14264.00	90.590	270.980	7079.00	7609.37	1664.78	-7438.63	40°26'37.448"N	104°57'04.661"W	2.27	
14358.00	91.030	270.760	7077.67	7702.36	1666.21	-7532.61	40°26'37.461"N	104°57'05.877"W	0.52	
14453.00	90.460	269.880	7076.44	7796.20	1666.74	-7627.60	40°26'37.466"N	104°57'07.105"W	1.10	
14548.00	91.300	270.190	7074.98	7889.97	1666.80	-7722.58	40°26'37.467"N	104°57'08.334"W	0.94	
14643.00	92.090	269.660	7072.17	7983.68	1666.68	-7817.54	40°26'37.465"N	104°57'09.562"W	1.00	
14738.00	91.300	271.160	7069.36	8077.51	1667.36	-7912.49	40°26'37.472"N	104°57'10.790"W	1.78	
14832.00	92.090	270.940	7066.58	8170.51	1669.08	-8006.44	40°26'37.488"N	104°57'12.005"W	0.87	
14927.00	90.540	272.880	7064.40	8264.70	1672.24	-8101.35	40°26'37.519"N	104°57'13.233"W	2.61	
15022.00	91.380	273.450	7062.80	8359.16	1677.49	-8196.19	40°26'37.571"N	104°57'14.459"W	1.07	
15116.00	90.100	270.590	7061.59	8452.39	1680.80	-8290.11	40°26'37.603"N	104°57'15.674"W	3.33	
15211.00	91.030	271.290	7060.65	8546.39	1682.36	-8385.09	40°26'37.618"N	104°57'16.903"W	1.23	
15306.00	89.480	271.030	7060.23	8640.45	1684.28	-8480.07	40°26'37.637"N	104°57'18.131"W	1.65	
15401.00	89.840	270.760	7060.79	8734.44	1685.76	-8575.06	40°26'37.651"N	104°57'19.360"W	0.47	
15496.00	91.690	271.730	7059.53	8828.51	1687.83	-8670.02	40°26'37.671"N	104°57'20.588"W	2.20	
15591.00	88.070	271.030	7059.72	8922.60	1690.12	-8764.98	40°26'37.694"N	104°57'21.816"W	3.88	



Actual Wellpath Report

MILKSHAKE 31W-20-9N AWP

Page 7 of 9



REFERENCE WELLPATH IDENTIFICATION			
Operator	EXTRACTION OIL & GAS	Slot	SLOT#30 MILKSHAKE 31W-20-9N (1167'FSL & 225'FWL, SEC.32)
Area	COLORADO	Well	MILKSHAKE 31W-20-9N
Field	WELD COUNTY (NAD83/TRUE NORTH)	Wellbore	MILKSHAKE 31W-20-9N AWB
Facility	SEC.32-T06N-R67W		

WELLPATH DATA (166 stations)										
MD [ft]	Inclination [°]	Azimuth [°]	TVD [ft]	Vert Sect [ft]	North [ft]	East [ft]	Latitude	Longitude	DLS °/100ft	Comments
15685.00	87.580	270.500	7063.29	9015.51	1691.37	-8858.90	40°26'37.706"N	104°57'23.031"W	0.77	
15780.00	90.630	269.930	7064.78	9109.31	1691.73	-8953.88	40°26'37.709"N	104°57'24.259"W	3.27	
15874.00	90.230	269.790	7064.07	9202.05	1691.50	-9047.87	40°26'37.706"N	104°57'25.475"W	0.45	
15969.00	90.940	269.570	7063.10	9295.73	1690.97	-9142.87	40°26'37.701"N	104°57'26.704"W	0.78	
16064.00	90.680	269.350	7061.76	9389.34	1690.07	-9237.85	40°26'37.691"N	104°57'27.932"W	0.36	
16159.00	90.680	267.280	7060.63	9482.61	1687.28	-9332.80	40°26'37.664"N	104°57'29.160"W	2.18	
16253.00	90.810	270.980	7059.41	9575.13	1685.85	-9426.76	40°26'37.649"N	104°57'30.375"W	3.94	
16347.00	91.910	270.900	7057.18	9668.12	1687.39	-9520.72	40°26'37.664"N	104°57'31.591"W	1.17	
16442.00	90.370	270.900	7055.29	9762.09	1688.88	-9615.69	40°26'37.678"N	104°57'32.819"W	1.62	
16536.00	91.340	271.820	7053.88	9855.19	1691.12	-9709.65	40°26'37.700"N	104°57'34.034"W	1.42	
16631.00	89.970	271.510	7052.80	9949.36	1693.88	-9804.60	40°26'37.727"N	104°57'35.262"W	1.48	
16725.00	90.370	270.630	7052.52	10042.40	1695.63	-9898.59	40°26'37.744"N	104°57'36.478"W	1.03	
16820.00	91.120	270.190	7051.28	10136.27	1696.31	-9993.57	40°26'37.750"N	104°57'37.706"W	0.92	
16915.00	90.370	269.220	7050.05	10229.95	1695.82	-10088.56	40°26'37.745"N	104°57'38.935"W	1.29	
17010.00	90.900	268.960	7049.00	10323.46	1694.31	-10183.54	40°26'37.730"N	104°57'40.163"W	0.62	BAKER DRILLED USING THIRD PARTY MWD-LAST SURVEY (2394'FNL & 644'FWL, SEC.36)
17144.00	90.900	268.960	7046.89	10455.29	1691.88	-10317.51	40°26'37.705"N	104°57'41.896"W	0.00	PROJECTION TO BIT (2411'FNL & 490'FWL, SEC.36)



Actual Wellpath Report

MILKSHAKE 31W-20-9N AWP

Page 8 of 9



REFERENCE WELLPATH IDENTIFICATION			
Operator	EXTRACTION OIL & GAS	Slot	SLOT#30 MILKSHAKE 31W-20-9N (1167'FSL & 225'FWL, SEC.32)
Area	COLORADO	Well	MILKSHAKE 31W-20-9N
Field	WELD COUNTY (NAD83/TRUE NORTH)	Wellbore	MILKSHAKE 31W-20-9N AWB
Facility	SEC.32-T06N-R67W		

TARGETS								
Name	TVD [ft]	North [ft]	East [ft]	Grid East [US ft]	Grid North [US ft]	Latitude	Longitude	Shape
SEC.31-T06N-R67W	9.00	5.46	74.85	3160244.30	1403355.20	40°26'21.062"N	104°55'27.484"W	polygon
SEC.32-T06N-R67W	9.00	5.46	74.85	3160244.30	1403355.20	40°26'21.062"N	104°55'27.484"W	polygon
SEC.36-T06N-R68W	9.00	5.46	74.85	3160244.30	1403355.20	40°26'21.062"N	104°55'27.484"W	polygon
MILKSHAKE 31W-20-9N BHL (2417'FNL & 460'FWL, SEC.36)	7110.00	1685.35	-10367.66	3149791.52	1404967.22	40°26'37.640"N	104°57'42.545"W	point
MILKSHAKE 31W-20-9N LP (2553'FNL & 460'FEL, SEC.31)	7110.00	1651.49	-809.14	3159349.69	1404995.39	40°26'37.327"N	104°55'38.917"W	point
MILKSHAKE 31W-20-9N LP REV-1 (2533'FNL & 460'FEL, SEC.31)	7110.00	1671.47	-809.12	3159349.57	1405015.37	40°26'37.525"N	104°55'38.917"W	point
SEC.31-T06N-R67W (460'FEL/FWL)	7209.00	5.46	74.85	3160244.30	1403355.20	40°26'21.062"N	104°55'27.484"W	polygon
SEC.36-T06N-R68W (460'FEL/FWL)	7209.00	5.46	74.85	3160244.30	1403355.20	40°26'21.062"N	104°55'27.484"W	polygon

WELLPATH COMPOSITION - Ref Wellbore: MILKSHAKE 31W-20-9N AWB Ref Wellpath: MILKSHAKE 31W-20-9N AWP				
Start MD [ft]	End MD [ft]	Positional Uncertainty Model	Log Name/Comment	Wellbore
28.00	1525.00	ISCWSA MWD, Rev. 4 (Standard)	TOTAL SURFACE SURVEYS <224-1525>	MILKSHAKE 31W-20-9N AWB
1525.00	17010.00	ISCWSA MWD, Rev. 4 (Standard)	BAKER DRILLED USING THIRD PARTY MWD <1659-17010>	MILKSHAKE 31W-20-9N AWB
17010.00	17144.00	Blind Drilling (std)	Projection to bit	MILKSHAKE 31W-20-9N AWB



Actual Wellpath Report

MILKSHAKE 31W-20-9N AWP

Page 9 of 9



REFERENCE WELLPATH IDENTIFICATION

Operator	EXTRACTION OIL & GAS	Slot	SLOT#30 MILKSHAKE 31W-20-9N (1167'FSL & 225'FWL, SEC.32)
Area	COLORADO	Well	MILKSHAKE 31W-20-9N
Field	WELD COUNTY (NAD83/TRUE NORTH)	Wellbore	MILKSHAKE 31W-20-9N AWB
Facility	SEC.32-T06N-R67W		

WELLPATH COMMENTS

MD [ft]	Inclination [°]	Azimuth [°]	TVD [ft]	Comment
1525.00	12.610	345.140	1520.09	TIED TO SURFACE SURVEYS
1659.00	14.630	356.470	1650.34	BAKER DRILLED USING THIRD PARTY MWD-FIRST SURVEY
7629.00	76.501	273.413	7094.47	CROSSED 406' SETBACK (2535'FNL & 460'FEL, SEC.31)
17010.00	90.900	268.960	7049.00	BAKER DRILLED USING THIRD PARTY MWD-LAST SURVEY (2394'FNL & 644'FWL, SEC.36)
17144.00	90.900	268.960	7046.89	PROJECTION TO BIT (2411'FNL & 490'FWL, SEC.36)