
		<b>Temperature (Quick Look)</b> <b>Gamma Ray</b> <b>Casing Collar Log</b>	
Company TEP Rocky Mountain LLC Well Federal RU 312-17 Field Rulison County Garfield State Colorado		Location: API # : 05-045-23736 Other Services: ---	
SEC 17 TWP 7S RGE 93W Permanent Datum Ground Level Elevation 8365.6' Log Measured From Kelly Bushing 24 FT Drilling Measured From Kelly Bushing		Elevation K A 8389.6' D.F. 8388.6' G.L. 8365.6'	
Date	06-MAR-2018		
Run Number	One		
Depth Driller	10872 FT		
Depth Logger	10791 FT		
Bottom Logged Interval	10789 FT		
Top Log Interval	Surface		
Open Hole Size	8.750"		
Type Fluid	Fresh Water		
Density / Viscosity	8.34 lb/gal		
Max. Recorded Temp.	235°F		
Estimated Cement Top	5147 FT		
Time Well Ready	ROA		
Time Logger on Bottom	10:20		
Equipment Number	HD-0359		
Location	Grand Junction, CO		
Recorded By	Z. Fisher		
Witnessed By	Bob Brown		
Borehole Record		Tubing Record	
Run Number	Bit	From	To
		Size	Weight
		From	To
Casing Record	Size (in)	Wt (lbs/ft)	Grade
Surface Casing	9.518	32.3	H-40
Intermediate #1	4.1/2	11.6	P-110
Intermediate #2			Surface
Liner			

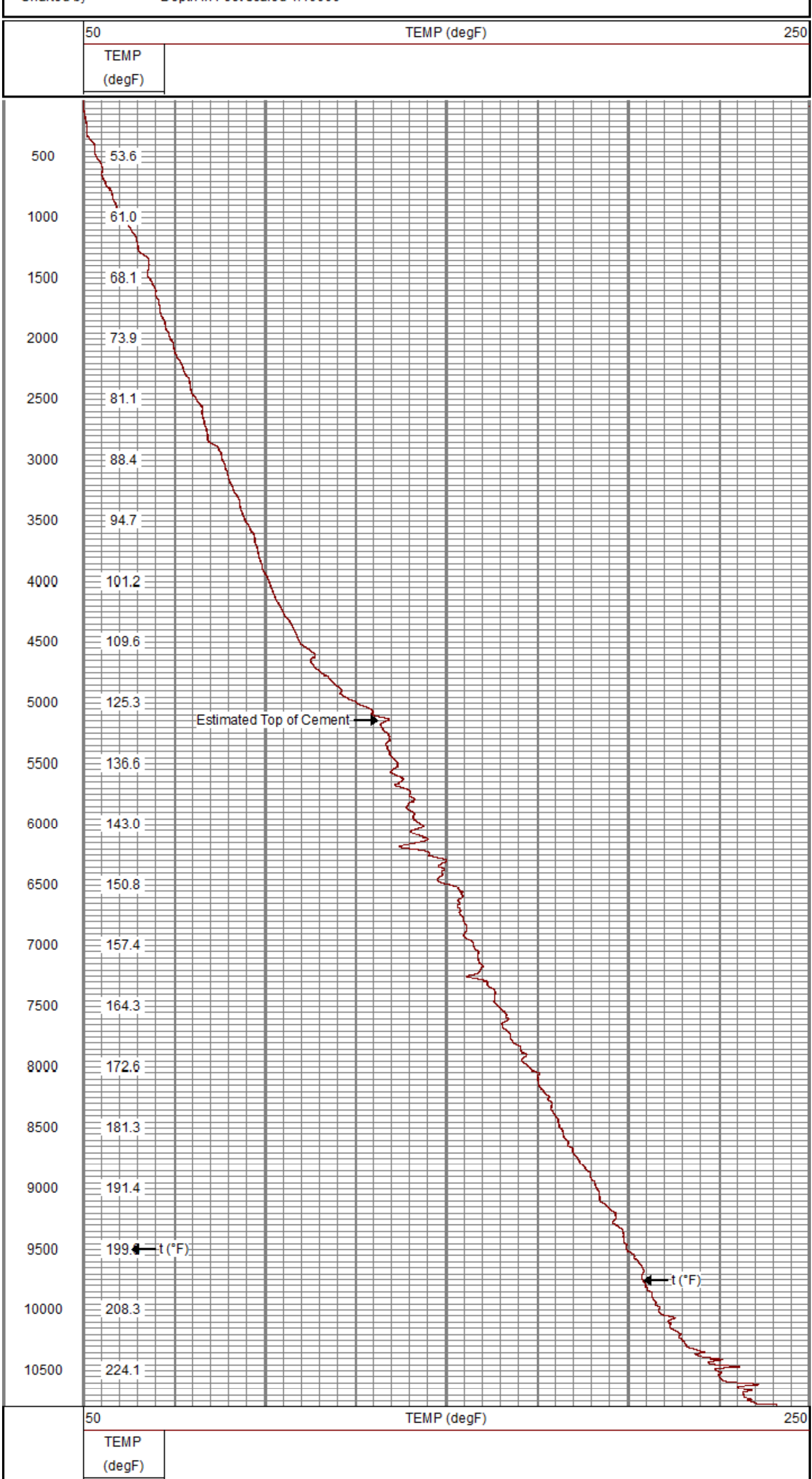
<<< Fold Here >>>

All interpretations are opinions based on inferences from electrical or other measurements and we cannot and do not guarantee the accuracy or correctness of any interpretation, and we shall not, except in the case of gross or willful negligence on our part, be liable or responsible for any loss, costs, damages, or expenses incurred or sustained by anyone resulting from any interpretation made by any of our officers, agents or employees. These interpretations are also subject to our general terms and conditions set out in our current Price Schedule.



Comments
<p>Log ran per customer request  Depth referenced to Kelly Bushing 24 FT  Marker Joint from 6706 FT to 6728 FT  Log ran from 10793 FT to Surface  Log ran with 0 PSI Surface Induced Pressure</p> <p>Thank you for choosing Reliance Oilfield Services, LLC!!</p>

	<b>Main Pass (Quick Look)</b> Recorded with 0 PSI Surface Induced Pressure
--	---

Database File	tep/federal ru 312-17\tep_federal ru 312-17_temp_03-06-18.db
Dataset Pathname	main.1
Presentation Format	ros_temp_ql_tep
Dataset Creation	Tue Mar 06 11:56:18 2018
Charted by	Depth in Feet scaled 1:10000



50	TEMP (degF)	250
----	-------------	-----

Sensor	Offset (ft)	Schematic	Description	Length (ft)	O.D. (in)	Weight (lb)
CCL	3.70		Titan CHD-16875 GO Titan 1-11/16" Assembled Electric Cable Head w/ 1" Fishing Neck	1.03	1.69	5.40
			Titan ADPTR-200 GOB GOB Titan 2" Electric GO Box to GO Box Adapter	0.23	2.00	5.00
			UW XTU-002 (10012277) Crossover Ultrawire Toolbus to Ultralink	1.58	1.69	6.50
			UW CCL-028 (10026417) 3-1/8" Ultrawire Casing Collar Locator	1.61	3.13	36.00
GR	1.76		UW PGR-020 (10019371) Production Gamma Ray	1.92	1.69	9.50
TEMP	0.37		UW PRT-016 (10025093) Platinum Resistance Thermometer	1.04	1.69	5.20
TSTAMP	0.00		UW BUL-006 (031422) Sondex Ultrawire Bullnose Terminator Sub	0.22	1.69	1.20
Dataset:		TEP_Federal RU 312-17_TEMP_03-06-18.db: field/well/run1/main				
Total length:		7.64 ft				
Total weight:		68.80 lb				
O.D.:		3.13 in				

Database File	C:\ProgramData\WarriorData\TEP\Federal RU 312-17\TEP_Federal RU 312-17_TEMP_03-06-18.db
Dataset Pathname	main
Dataset Creation	Tue Mar 06 10:19:24 2018

Calibration Report	
Temperature Calibration Report	
Serial Number: 10025093 Tool Model: 016 Performed: Sun Nov 12 14:20:23 2017	
Point #	Reading
1	13006.00 cps
2	18181.00 cps
3	29634.00 cps
4	41077.00 cps
5	52560.00 cps
6	58409.00 cps
7	cps
8	cps
9	cps
10	cps

Gamma Ray Calibration Report	
Serial Number: 10019371 Tool Model: 020 Performed: Sun Nov 12 06:37:04 2017	
Calibrator Value:	637.0 GAPI
Background Reading:	78.8 cps
Calibrator Reading:	1069.9 cps
Sensitivity:	0.6427 GAPI/cps

	Company TEP Rocky Mountain LLC Well Federal RU 312-17 Field Rulison County Garfield State Colorado
--	--