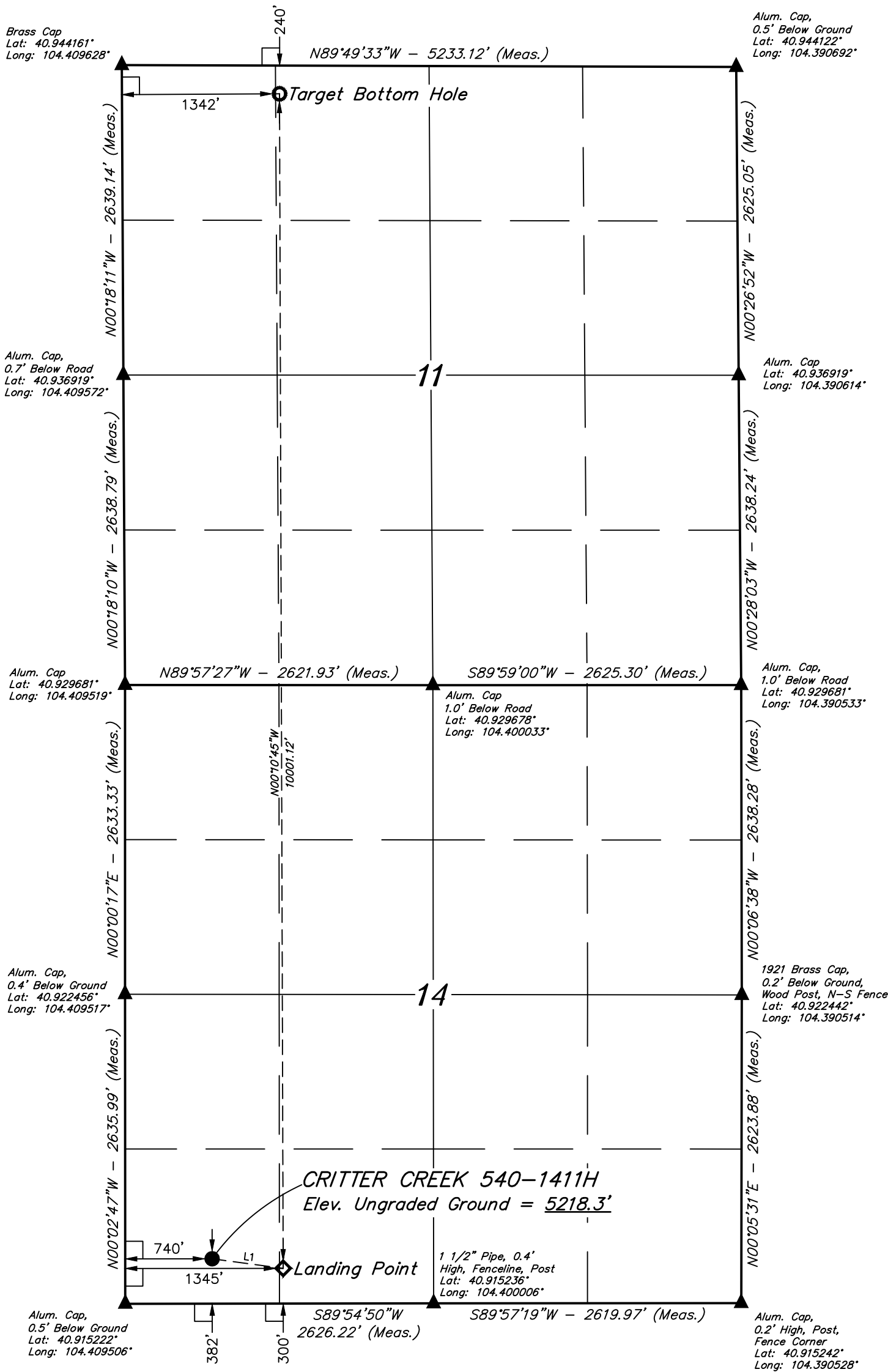


LEGEND:

- └─ = 90° SYMBOL
● = PROPOSED WELLHEAD.
◆ = LANDING POINT
○ = TARGET BOTTOM HOLE.
▲ = SECTION CORNERS LOCATED. (NAD 83)

T11N, R63W, 6th P.M.



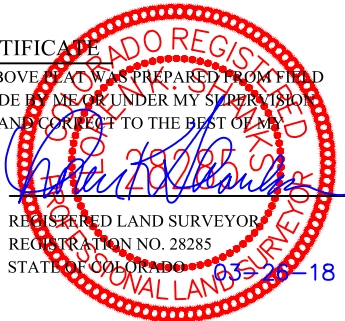
| LINE TABLE | | |
|------------|-------------|---------|
| LINE | DIRECTION | LENGTH |
| L1 | S82°21'14"E | 610.56' |

PDOP = 1.3

| NAD 83 (SURFACE LOCATION) | NAD 83 (LANDING POINT) | NAD 83 (TARGET BOTTOM HOLE) |
|--|--|--|
| LATITUDE = 40°54'58.59" (40.916274) | LATITUDE = 40°54'57.79" (40.916052) | LATITUDE = 40°56'36.58" (40.943494) |
| LONGITUDE = 104°24'24.59" (104.406829) | LONGITUDE = 104°24'16.71" (104.404640) | LONGITUDE = 104°24'17.16" (104.404766) |
| NAD 27 (SURFACE LOCATION) | NAD 27 (LANDING POINT) | NAD 27 (TARGET BOTTOM HOLE) |
| LATITUDE = 40°54'58.65" (40.916291) | LATITUDE = 40°54'57.85" (40.916069) | LATITUDE = 40°56'36.64" (40.943511) |
| LONGITUDE = 104°24'22.74" (104.406318) | LONGITUDE = 104°24'14.86" (104.404129) | LONGITUDE = 104°24'15.32" (104.404255) |
| STATE PLANE NAD 83 (CO. NORTH) | STATE PLANE NAD 83 (CO. NORTH) | STATE PLANE NAD 83 (CO. NORTH) |
| N: 1578512.88 E: 3302132.93 | N: 1578439.35 E: 3302738.91 | N: 1588436.93 E: 3302580.59 |
| STATE PLANE NAD 27 (CO. NORTH) | STATE PLANE NAD 27 (CO. NORTH) | STATE PLANE NAD 27 (CO. NORTH) |
| N: 578510.87 E: 2302282.31 | N: 578437.35 E: 2302888.28 | N: 588434.73 E: 2302730.02 |

CERTIFICATE

THIS IS TO CERTIFY THAT THE ABOVE PLAT WAS PREPARED FROM FIELD NOTES OF ACTUAL SURVEYS MADE BY ME OR UNDER MY SUPERVISION, AND THAT THE SAME ARE TRUE AND CORRECT TO THE BEST OF MY KNOWLEDGE AND BELIEF.



REGISTERED LAND SURVEYOR
REGISTRATION NO. 28285
STATE OF COLORADO 03-19-18

REV: 3 03-19-18 C.C. (SHL CHANGE)

BASIS OF BEARINGS
BASIS OF BEARINGS IS A G.P.S. OBSERVATION
BASIS OF ELEVATION

SPOT ELEVATION LOCATED AT THE NORTHEAST CORNER OF SECTION 1, T11N, R63W, 6th P.M. TAKEN FROM THE HERFORD, QUADRANGLE, COLORADO, WELD COUNTY, 7.5 MINUTE QUAD (TOPOGRAPHIC MAP) PUBLISHED BY THE UNITED STATES DEPARTMENT OF THE INTERIOR, GEOLOGICAL SURVEY. SAID ELEVATION IS MARKED AS BEING 5352 FEET.



UELS, LLC
Corporate Office * 85 South 200 East
Vernal, UT 84078 * (435) 789-1017



BILL BARRETT CORPORATION

CRITTER CREEK 540-1411H
SW 1/4 SW 1/4, SECTION 14, T11N, R63W, 6th P.M.
WELD COUNTY, COLORADO

| | | | |
|-------------|-------------------|----------|------------|
| SURVEYED BY | CHAD MEIERS, J.B. | 12-22-17 | SCALE |
| DRAWN BY | T.L.L. | 01-03-18 | 1" = 1000' |

WELL LOCATION PLAT