

LEGEND:

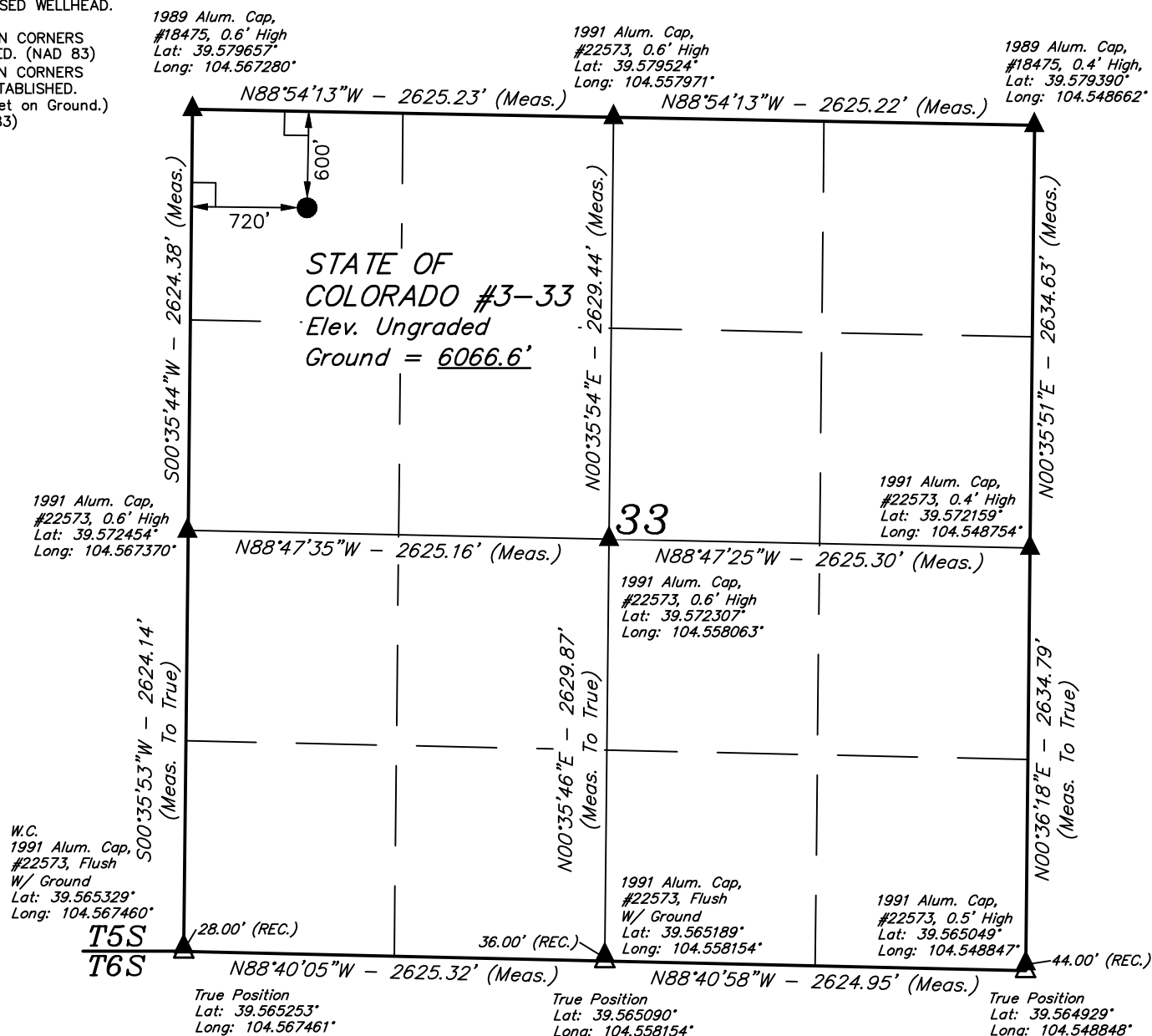
└─ = 90° SYMBOL

● = PROPOSED WELLHEAD.

▲ = SECTION CORNERS LOCATED. (NAD 83)

△ = SECTION CORNERS RE-ESTABLISHED. (Not Set on Ground.) (NAD 83)

T5S, R64W, 6th P.M.



PDOP = 1.4

NAD 83 (SURFACE LOCATION)
LATITUDE = 39°34'40.70" (39.577973)
LONGITUDE = 104°33'53.09" (104.564748)
NAD 27 (SURFACE LOCATION)
LATITUDE = 39°34'40.75" (39.577987)
LONGITUDE = 104°33'51.21" (104.564225)
STATE PLANE NAD 83 (CO. CEN.)
N: 1636762.16 E: 3263616.60
STATE PLANE NAD 27 (CO. CEN.)
N: 636755.70 E: 2263770.84



CERTIFICATE

THIS IS TO CERTIFY THAT THE ABOVE PLAT WAS PREPARED FROM FIELD NOTES OF ACTUAL SURVEYS MADE BY ME OR UNDER MY SUPERVISION, AND THAT THE SAME ARE TRUE AND CORRECT TO THE BEST OF MY KNOWLEDGE AND BELIEF.

REGISTERED LAND SURVEYOR
REGISTRATION NO. 28285
STATE OF COLORADO

CHAD MEIERS, G.B.

BASIS OF BEARINGS

BASIS OF BEARINGS IS A G.P.S. OBSERVATION

BASIS OF ELEVATION

BENCHMARK 374 LOCATED ON THE SECTION LINE BETWEEN SECTIONS 12 & 13, T5S, R64W, 6th P.M., TAKEN FROM 1988 PUBLISHED DATUM BY THE UNITED STATES DEPARTMENT OF THE INTERIOR, GEOLOGICAL SURVEY AS BEING 6054.61 FEET.

UELS, LLC

Corporate Office * 85 South 200 East
Vernal, UT 84078 * (435) 789-1017

RENEGADE OIL AND GAS, LLC

STATE OF COLORADO #3-33
600' FNL 720' FWL

NW 1/4 NW 1/4, SECTION 33, T5S, R64W, 6th P.M.
ARAPAHOE COUNTY, COLORADO

SURVEYED BY	CHAD MEIERS, G.B.	10-12-17	SCALE
DRAWN BY	D.J.W.	10-20-17	1" = 1000'

WELL LOCATION PLAT

