

5" = 100' TVD

COMPANY : BILL BARRETT CORP. WELL : ANSCHUTZ WILLIAMS 5-61-27-0108BNB FIELD : WATTENBERG COUNTY : WELD STATE : COLORADO COUNTRY : U.S.A. UWI : 05-123-45704				COMPANY : BILL BARRETT CORP. WELL : ANSCHUTZ WILLIAMS 5-61-27-0108BNB FIELD : WATTENBERG COUNTY : WELD STATE : COLORADO COUNTRY : U.S.A. UWI : 05-123-45704			
DEPTH REF. : RKB REF. HEIGHT : 16.500 ft GROUND LEVEL : 4621.600 ft				WELL LOCATION LAT:40°22'35.018"N LONG:104°12'12.960"W N:1382600.98 ft E:3361173.68 ft SEC:27 TWP:5N RANGE:61W			
BOREHOLE RECORD HOLE SIZE in FROM ft TO ft 12.75 0 990 8.75 990 6542 6.125 6542 16329				OTHER SERVICES NAD83 DIRECTIONAL ROP			
DEVIATION RECORD INCLINATION deg FROM ft TO ft 0 - 2 0 990 2 - 28 990 2615 28 - 0 2615 5708 0 - 90 5708 6529 90 +/- 3 6529 16329				CASING RECORD CASING SIZE in FROM ft TO ft 9.625 0 971 7 971 6527			
DRILLING CO.: CADDE DRILLING RIG: 24 LWD UNIT NO.: KIT PRT PEDISTRICT: CASPER SPUD DATE: 1/12/2018 LWD START DATE: 1/14/2018 LWD END DATE: 1/20/2018				DEPTH: 990 ft DEPTH: 16279 ft TOTAL DEPTH: 16329 ft			

Run Data						
RUN NUMBER	1	2	3			
START DATE	1/13/2018	1/14/2018	1/16/2018			
START TIME	10:55	15:59	01:38			
END DATE	1/13/2018	1/15/2018	1/20/2018			
END TIME	16:44	23:15	12:00			
DEPTH IN (ft)	96	990	6542			
DEPTH OUT (ft)	990	6542	16329			
LOG TOP (ft)	-	990	6506			
LOG BOTTOM (ft)	-	6506	16279			
HOLE SIZE (in)	13.25	8.5	6.125			
MUD DATA @ (ft)	-	5774	14798			
MUD TYPE	FRESH WATER	WATER BASED	WATER BASED			
DENSITY (lb / gal)	-	9.95	9.2			
VISCOSITY (s / qt)	-	14	30			
pH	-	8.5	7.1			
FLUID LOSS (cm3 / 30)	-	-	-			
SALINITY (ppm)	-	650	400			
Rm (ohmm @ deg F)	-	-	-			
Rmf (ohmm @ deg F)	-	-	-			
MAX TEMP (deg F)	81	110	225			
Rm @ MAX TEMP (ohmm)	-	-	-			
LWD ENGINEER #1	S. JOHNSON	S. JOHNSON	M. POTTER			
LWD ENGINEER #2	M. POTTER	M. POTTER	S. GRAY			
LWD ENGINEER #3	-	-	-			
LOG WITNESS #1	D. MOORE	D. MOORE	D. MOORE			
LOG WITNESS #2	-	-	-			

[illegible]

All interpretations are opinions based on inferences from electrical or other measurements and we cannot, and do not guarantee the accuracy or correctness of any interpretations, and we shall not, except in the case of gross or willful negligence on our part, be liable or responsible for any loss, costs, damages or expenses incurred or sustained by anyone resulting from any interpretation made by any of our officers, agents or employees. These interpretations are also subject to our general terms and conditions as set out in our current price schedule.

0

GAMMA RAY (GR)

300

Unit = aapi

1000

1050

TRUE VERTICAL DEPTH

1:240 (ft)

1000

1050

Rate of Penetration (ROP)

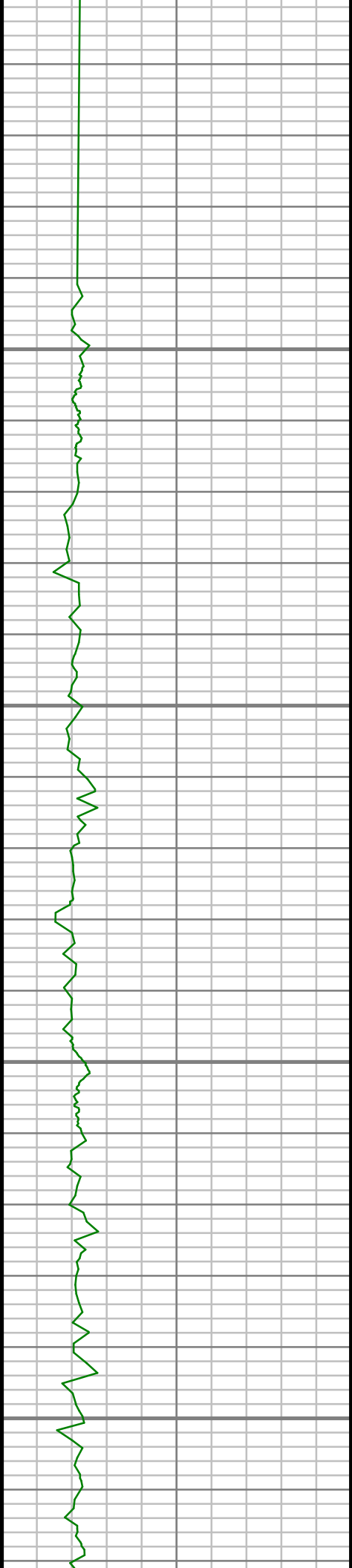
Unit = ft/hr

0

Tool Temperature (T-TEMP)

300

Unit = °F



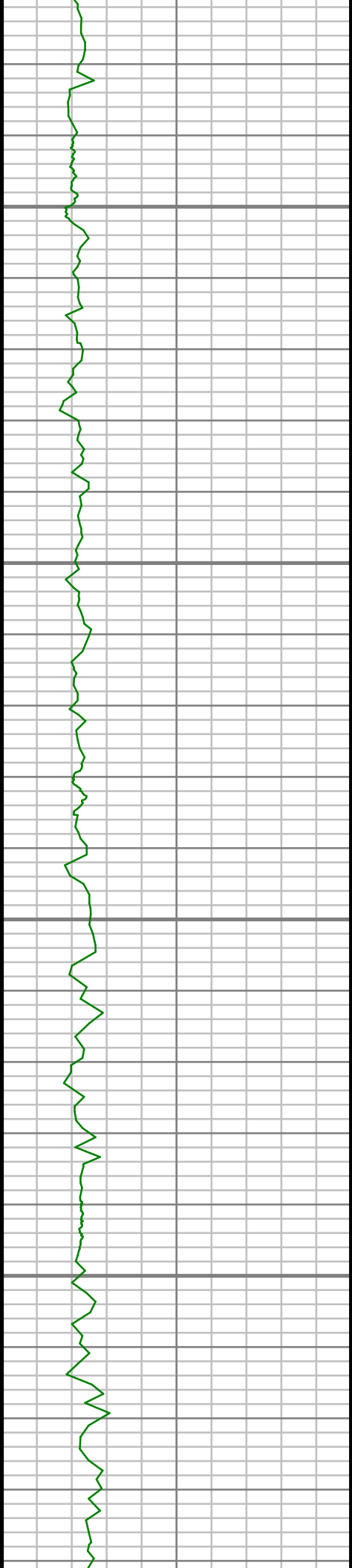
1100

1150

1200

1250



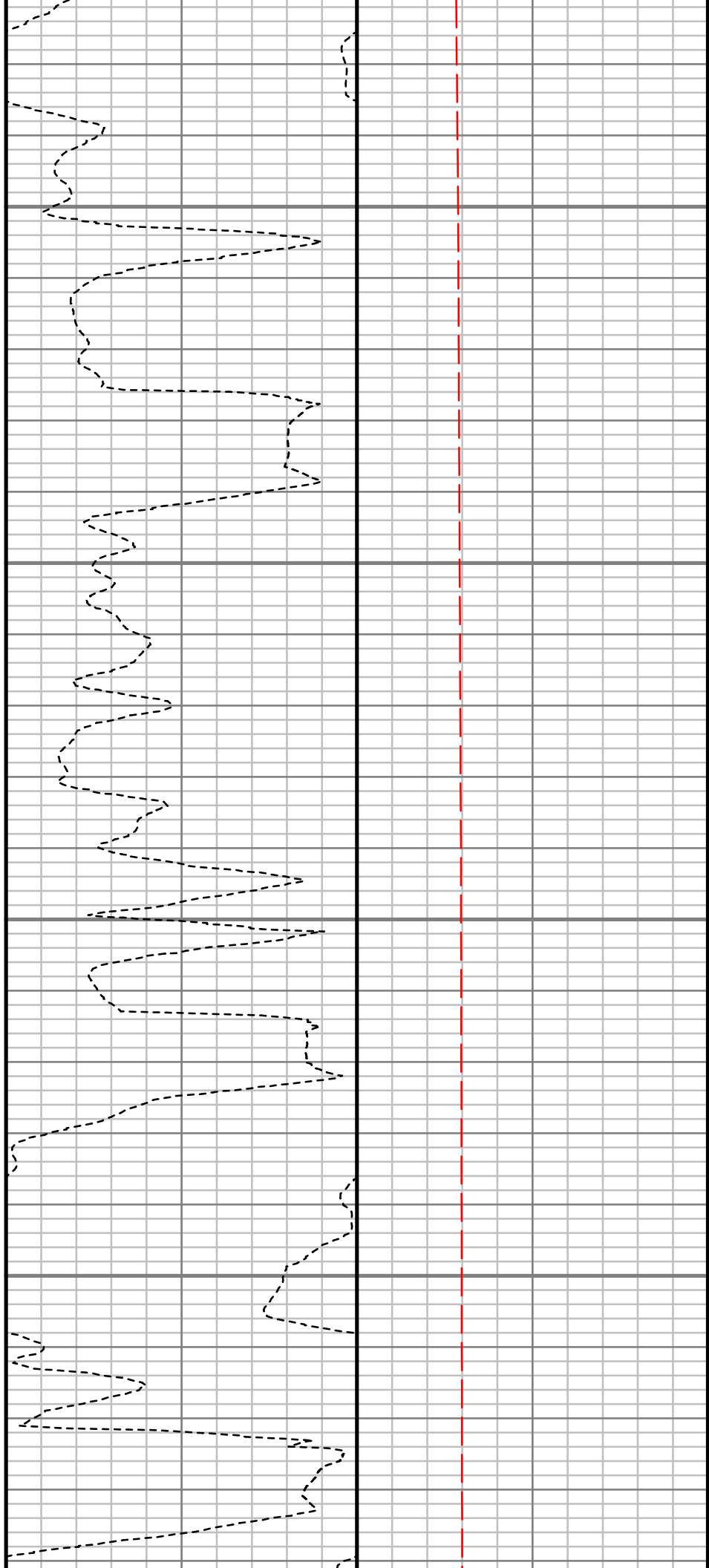


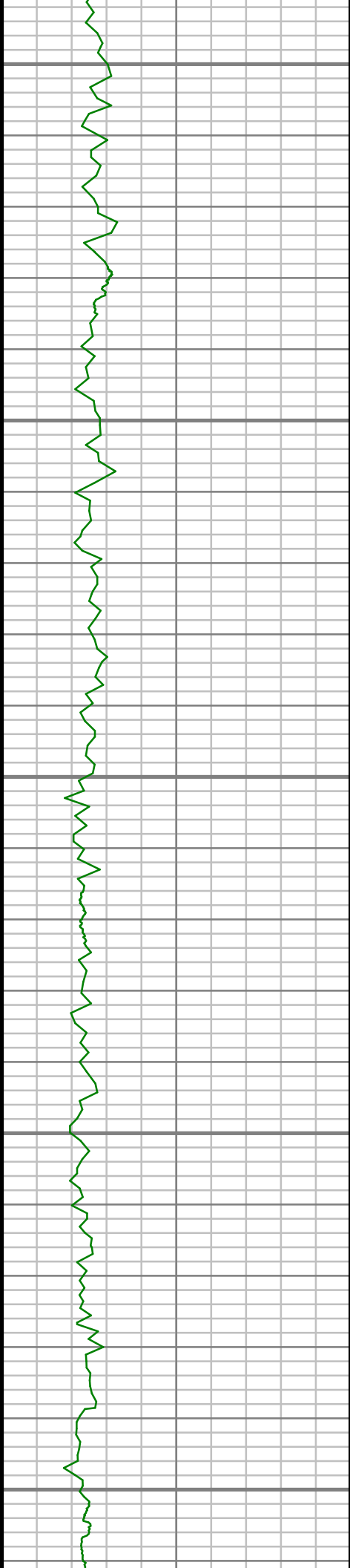
1300

1350

1400

1450





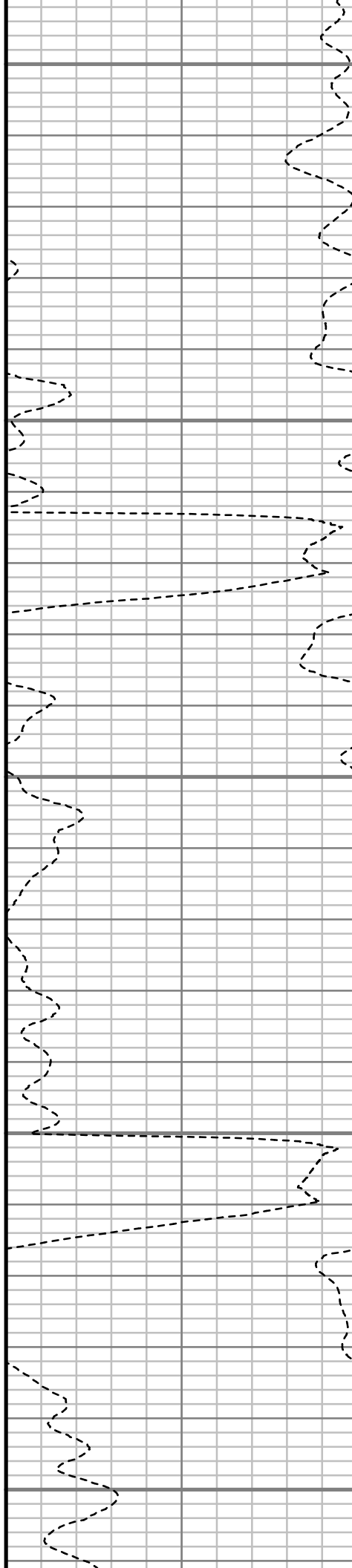
1500

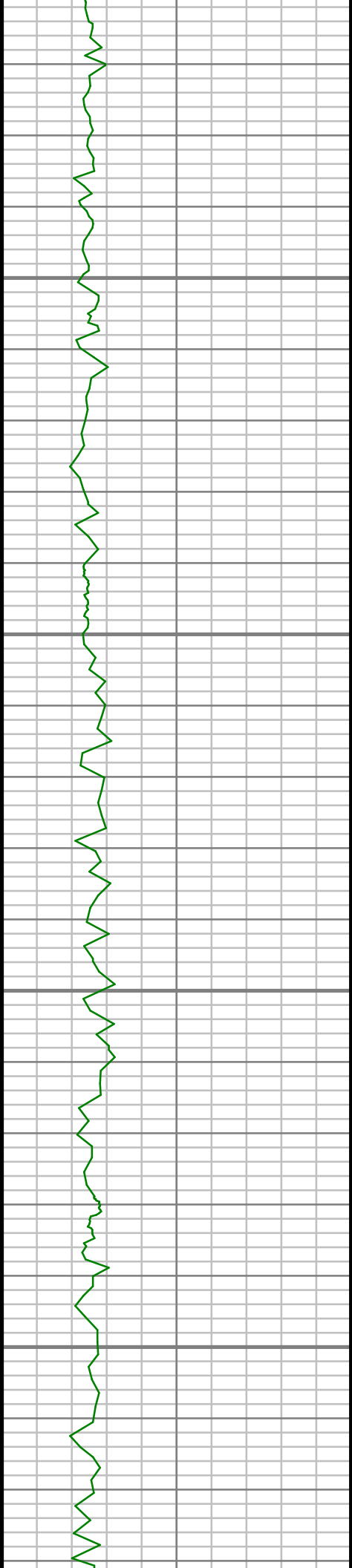
1550

1600

1650

1700



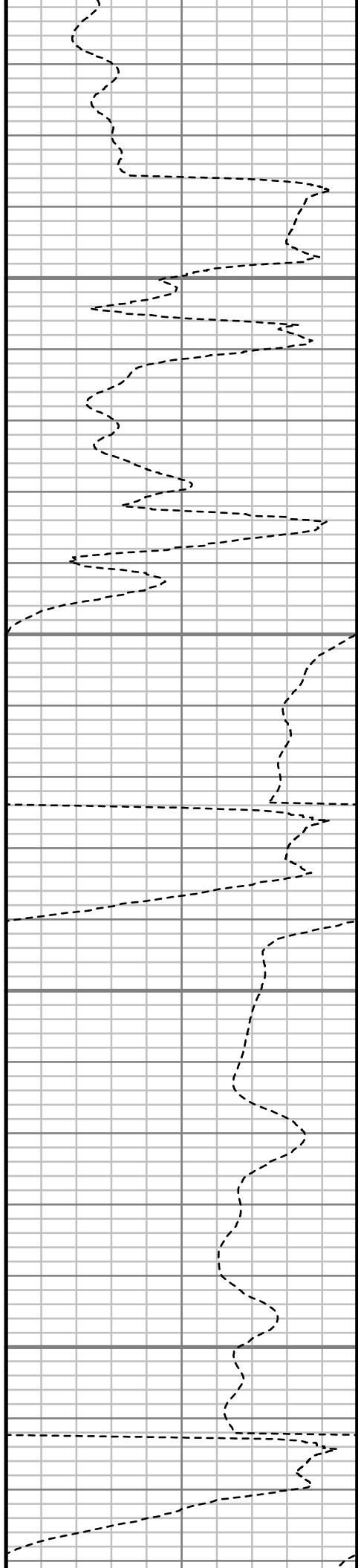


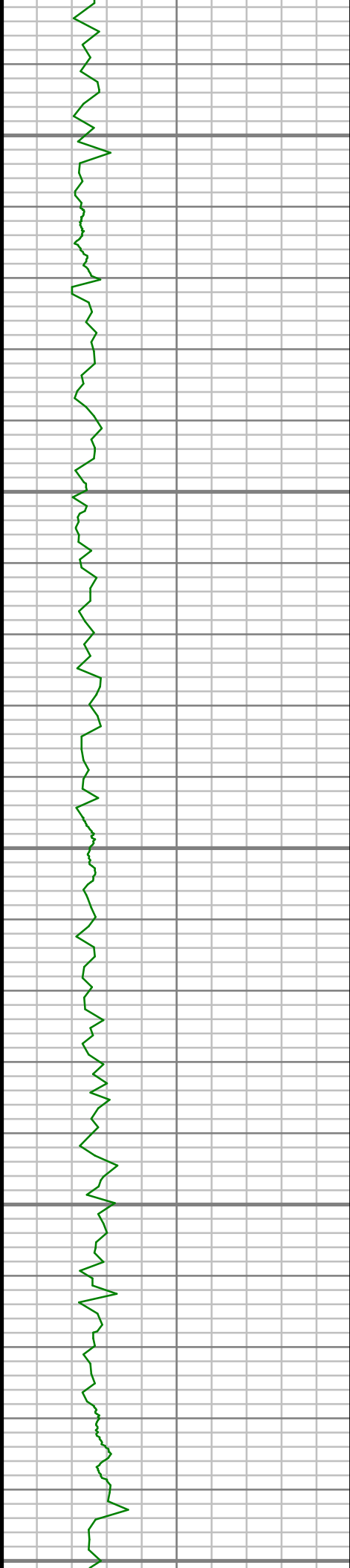
1750

1800

1850

1900





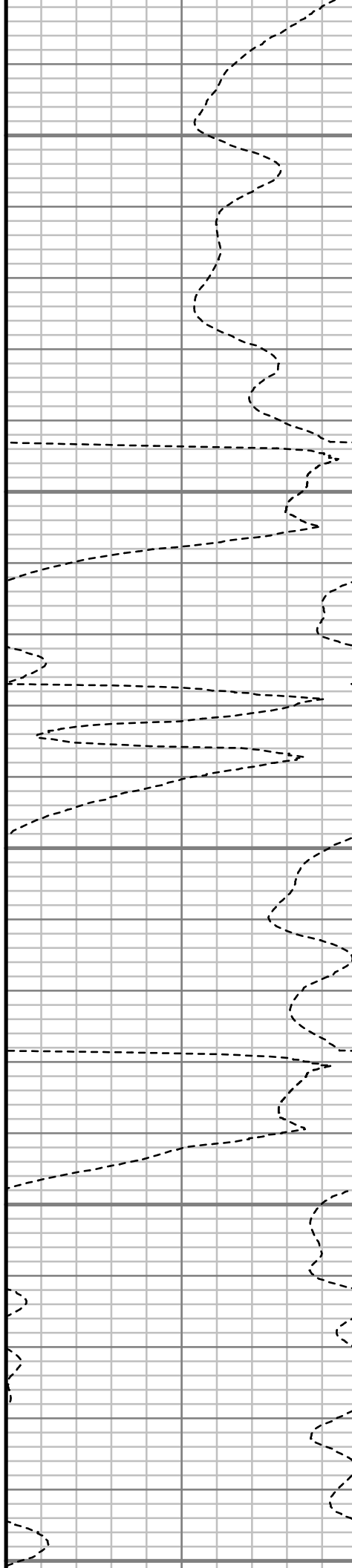
1950

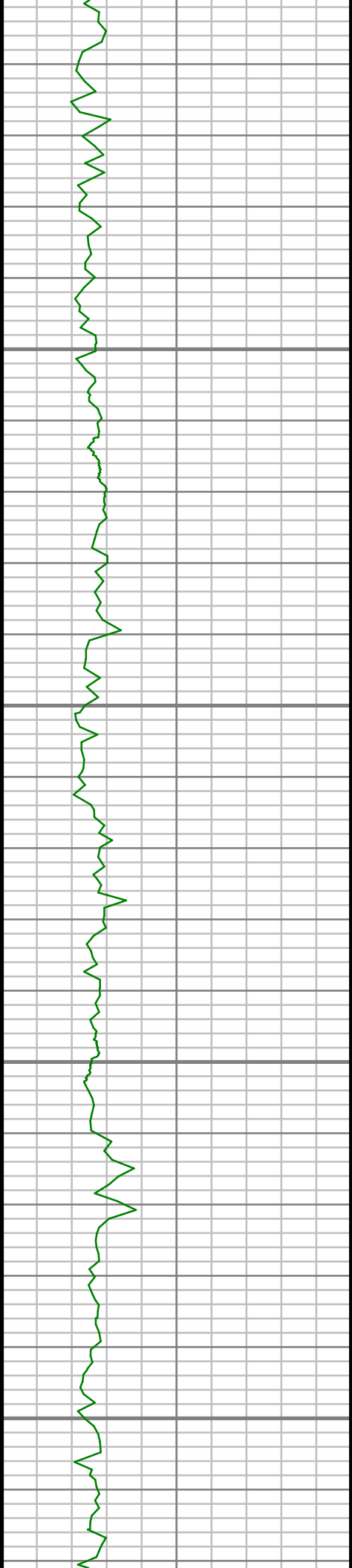
2000

2050

2100

2150





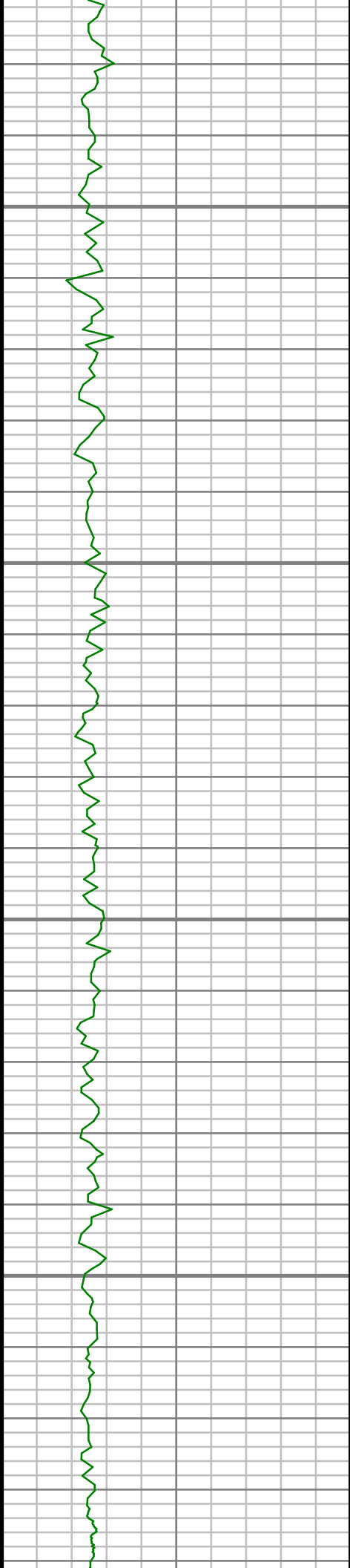
2200

2250

2300

2350



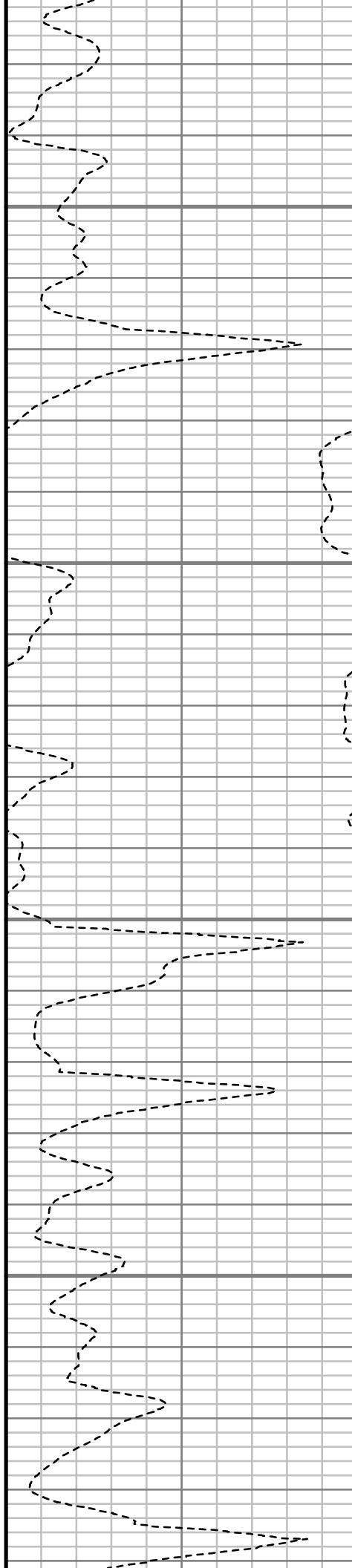


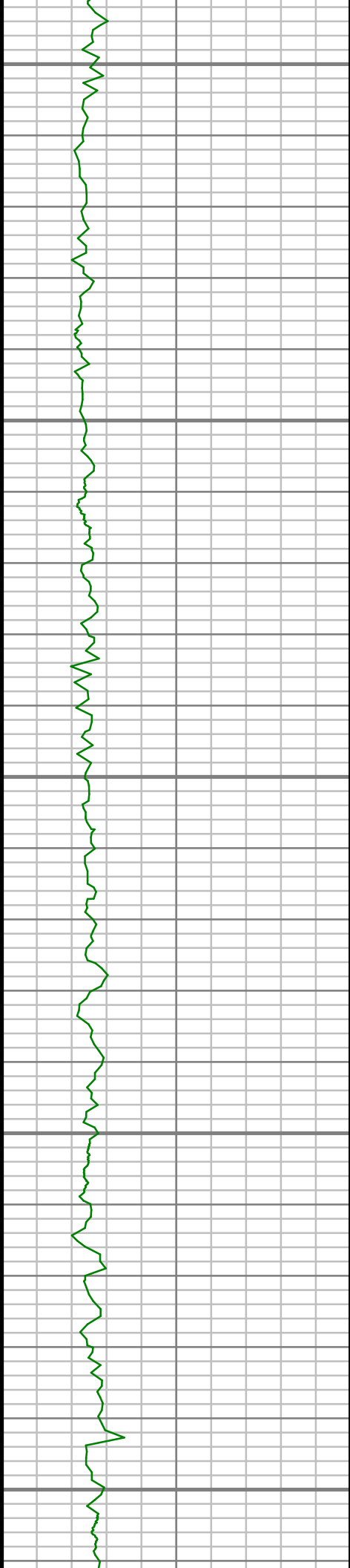
2400

2450

2500

2550





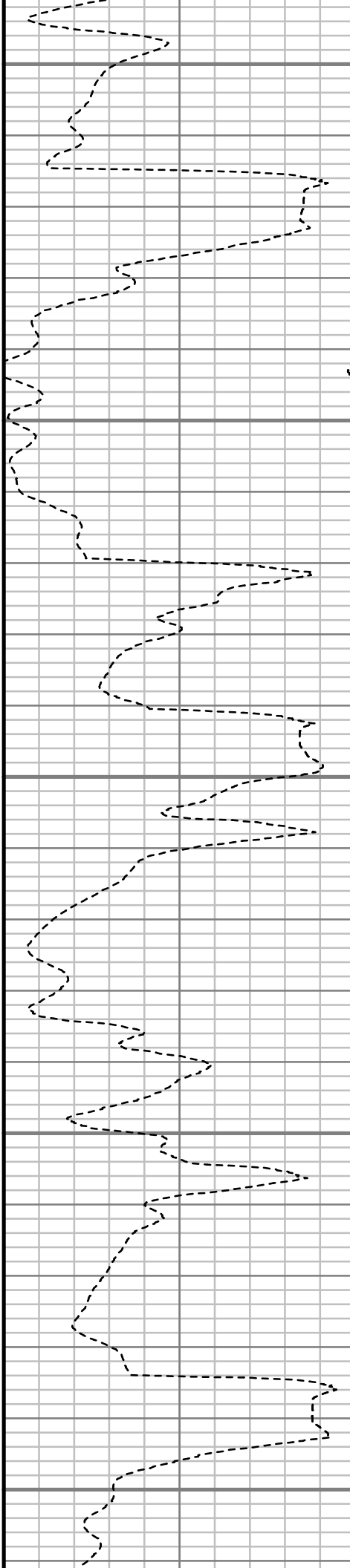
2600

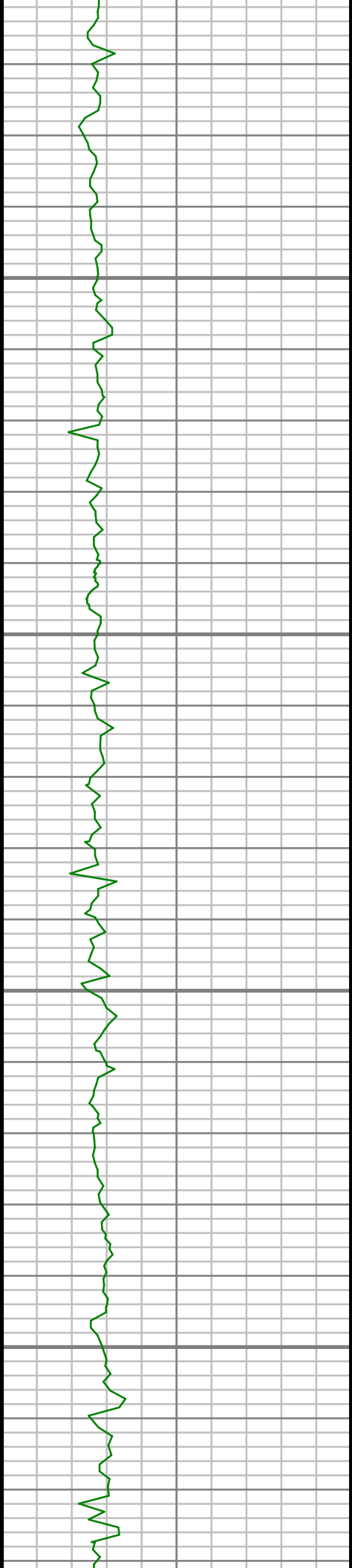
2650

2700

2750

2800



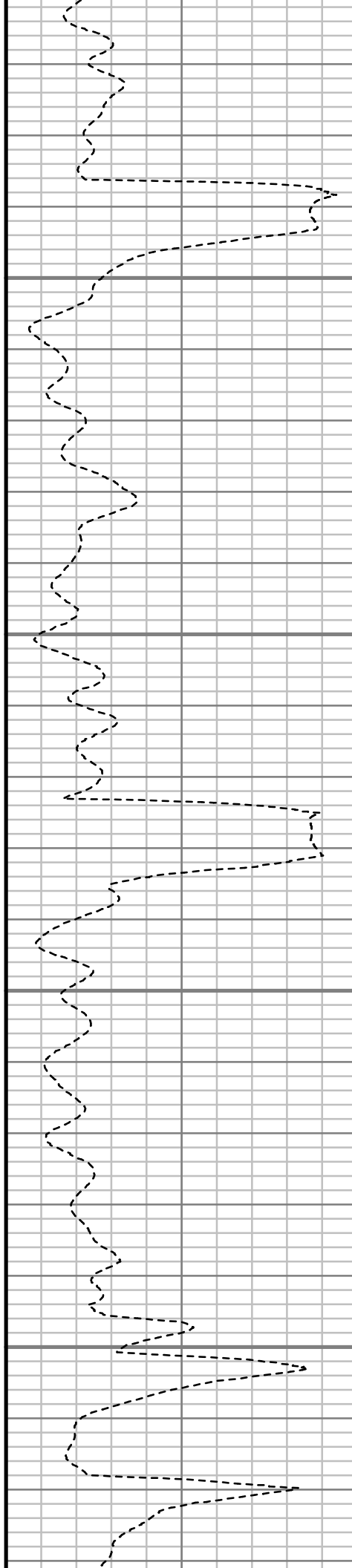


2850

2900

2950

3000





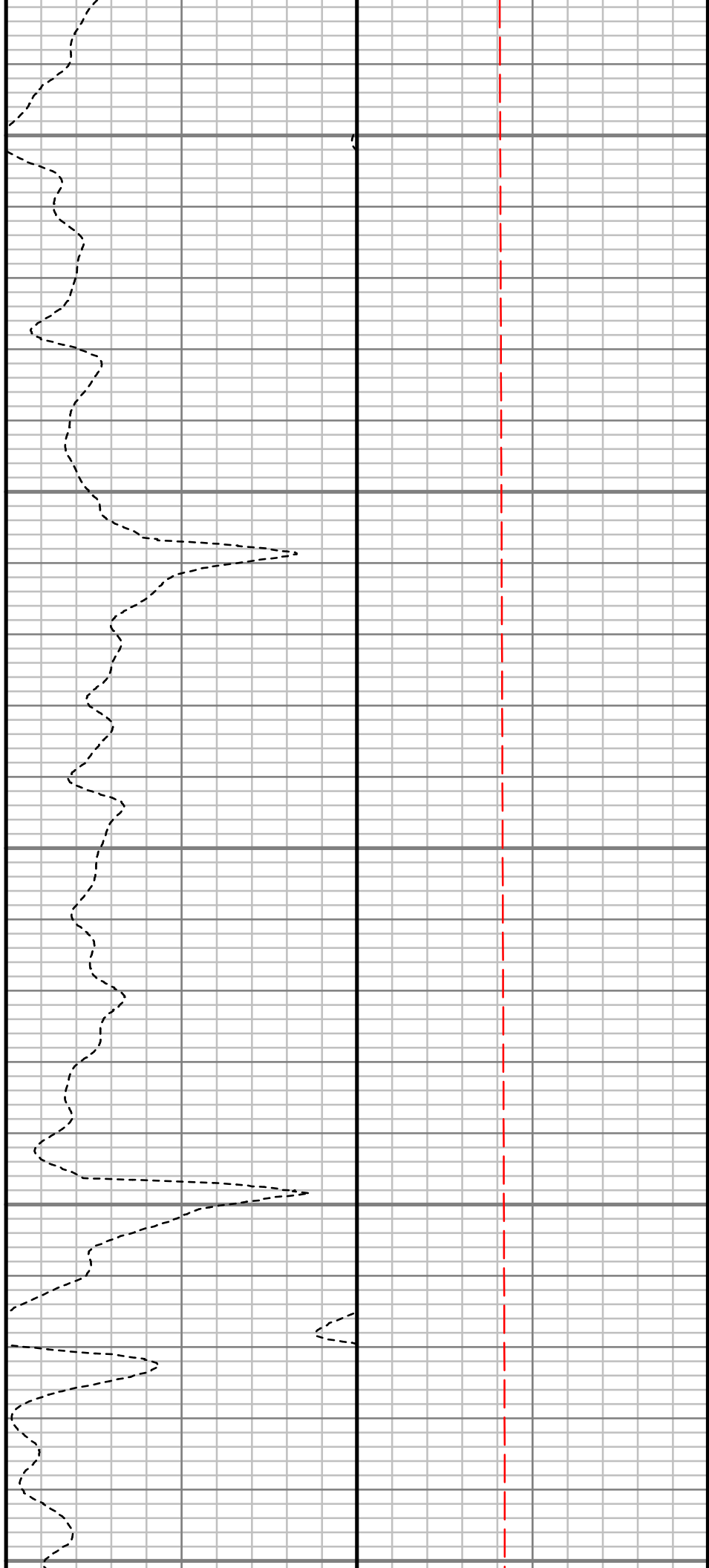
3050

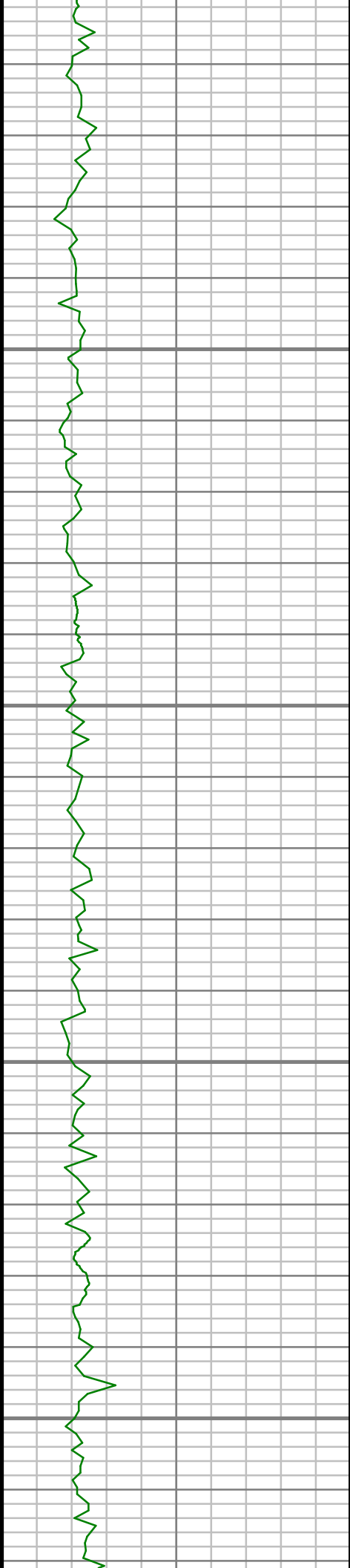
3100

3150

3200

3250



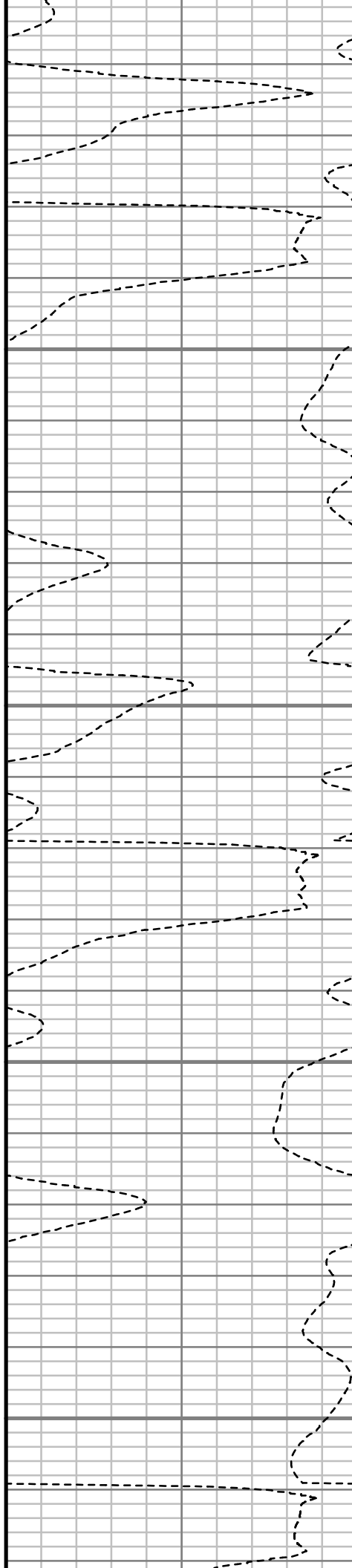


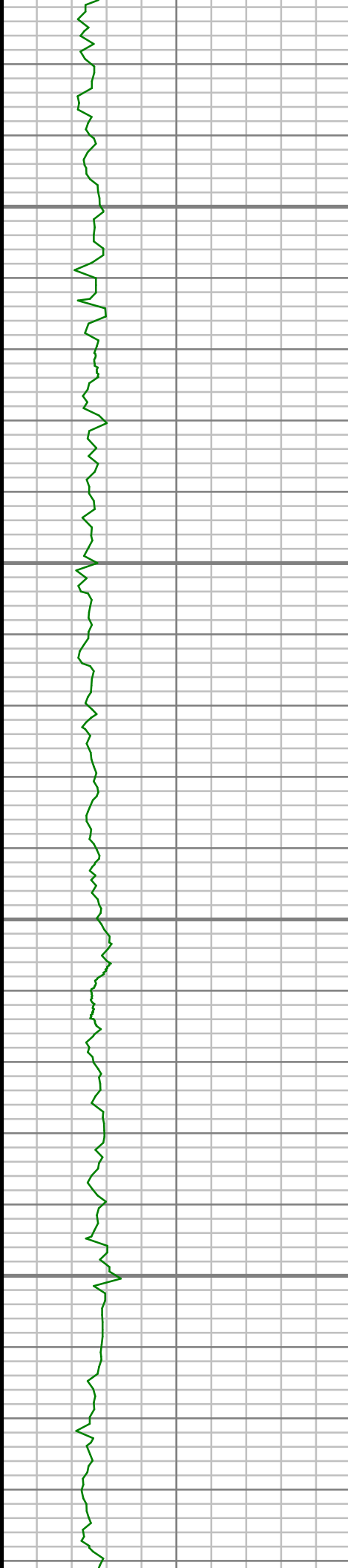
3300

3350

3400

3450



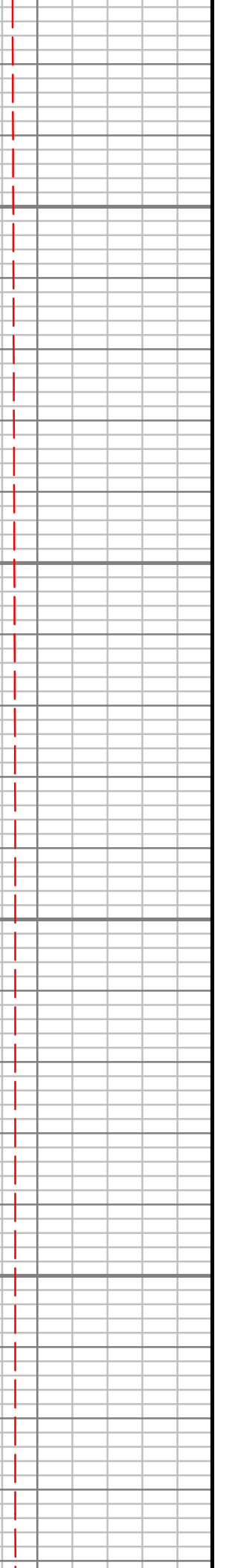
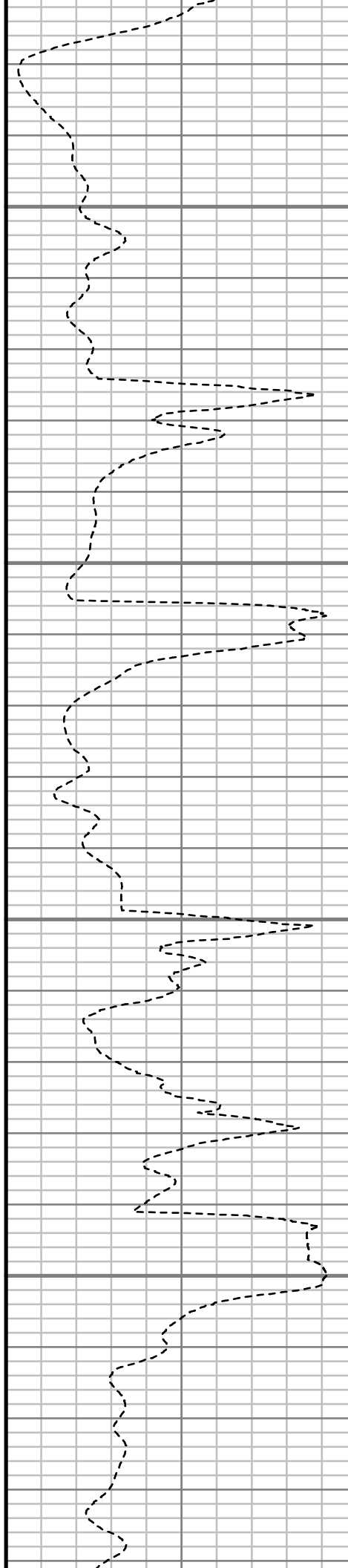


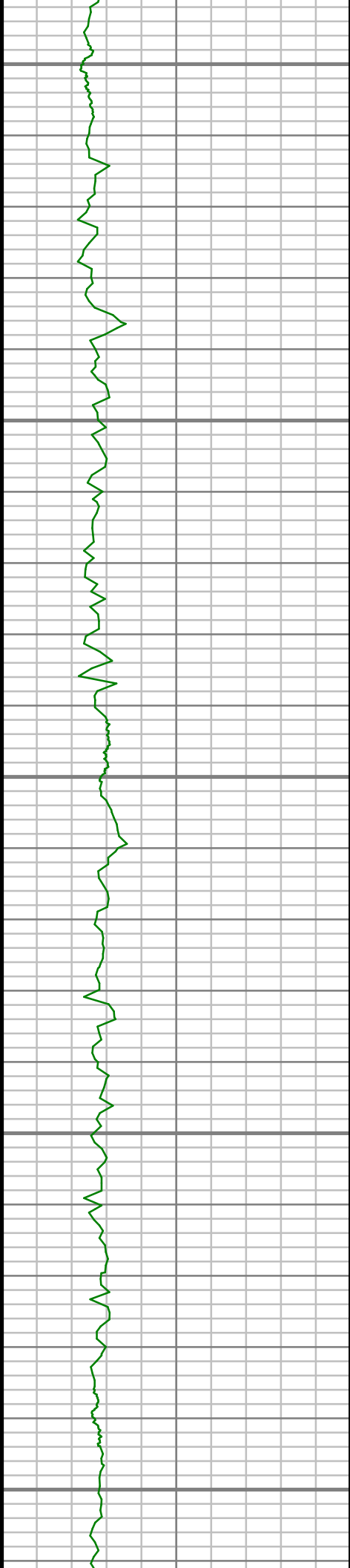
3500

3550

3600

3650





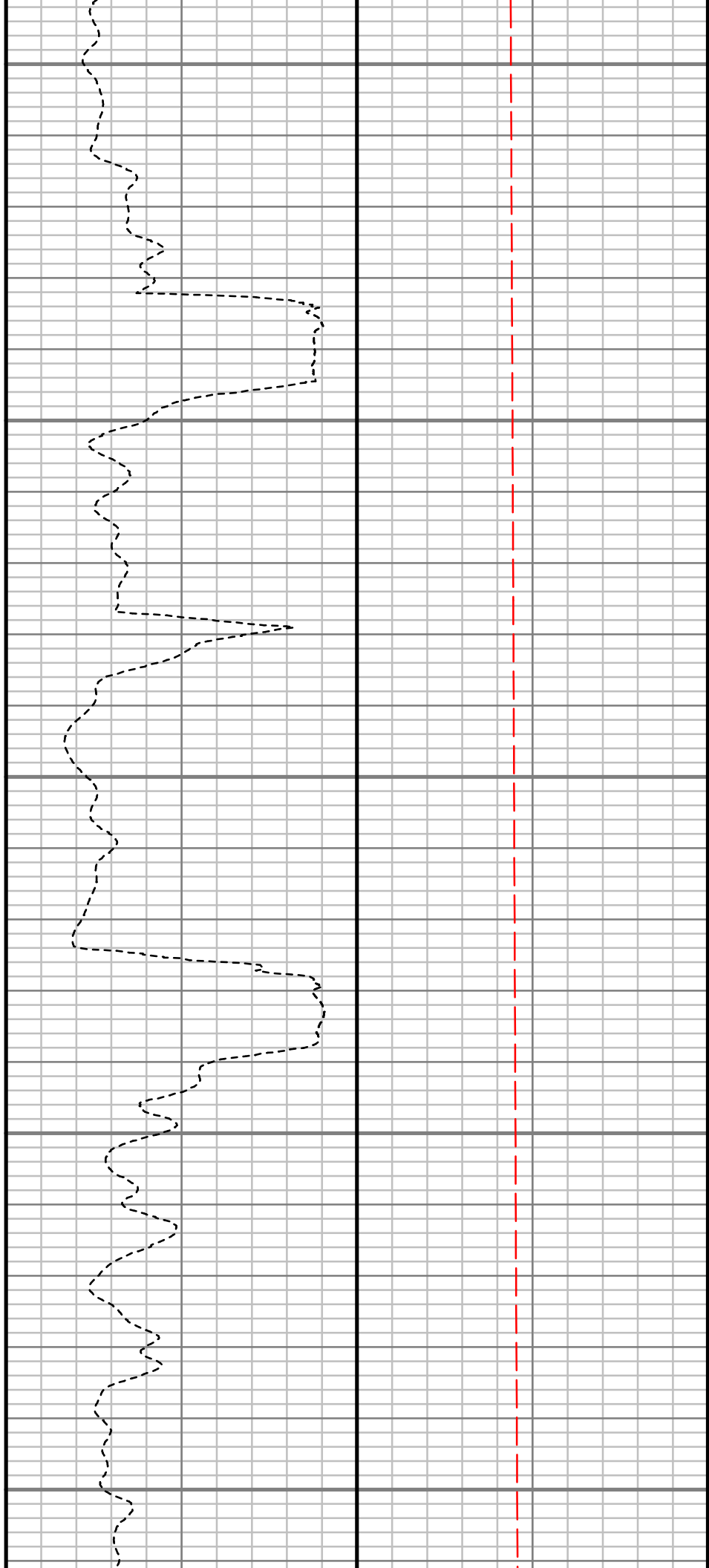
3700

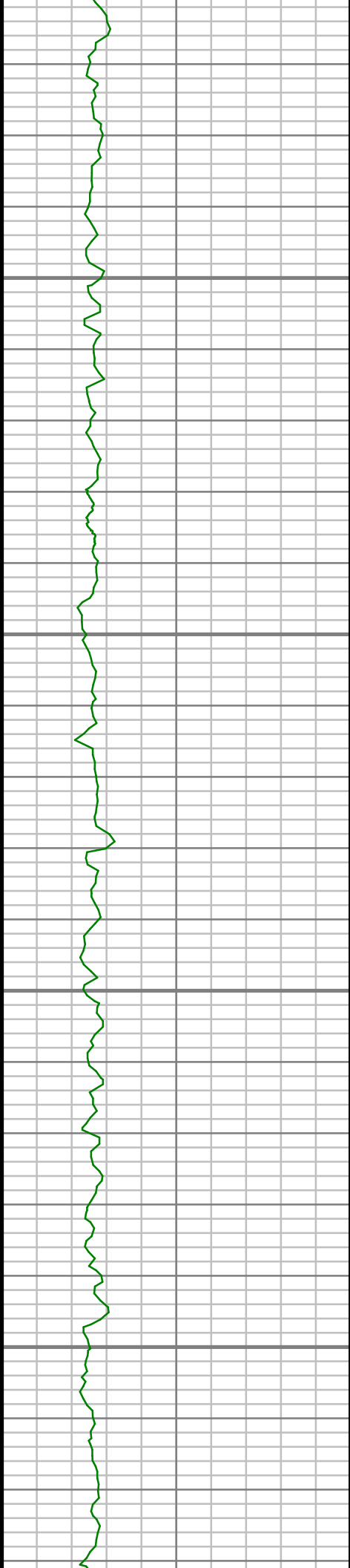
3750

3800

3850

3900



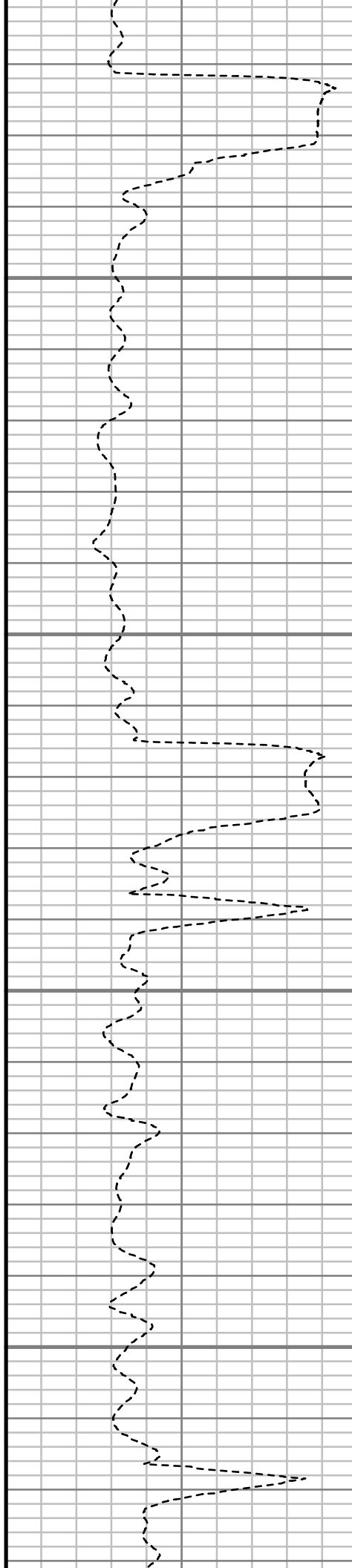


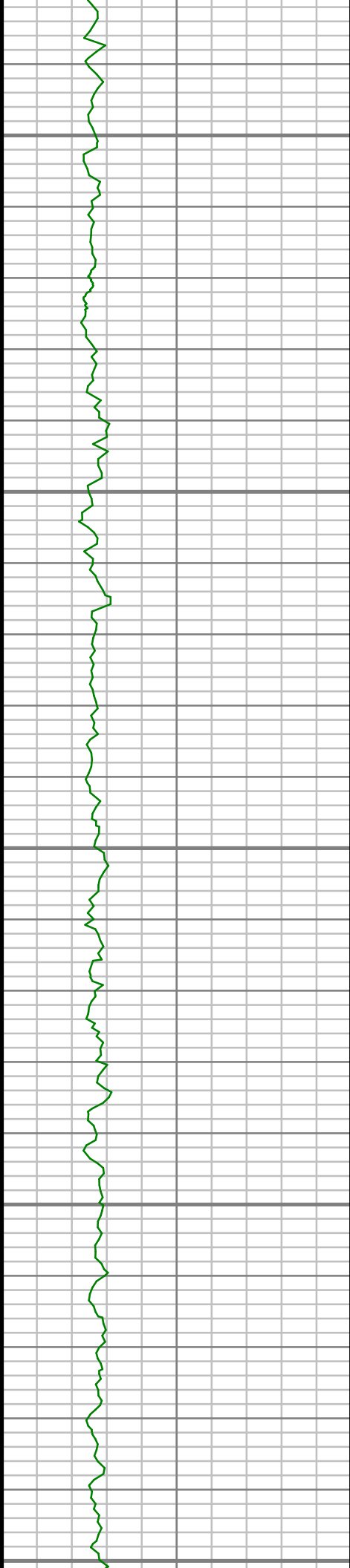
3950

4000

4050

4100





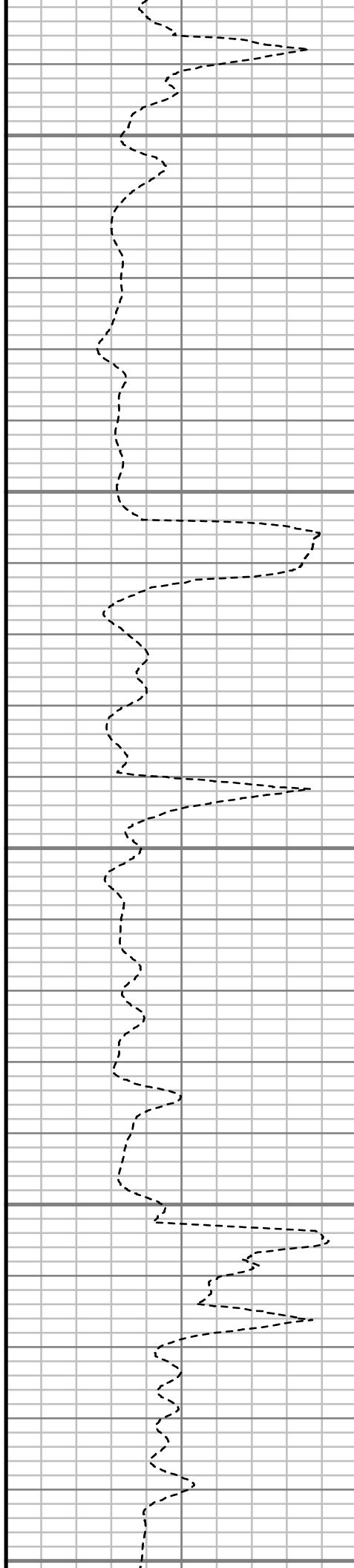
4150

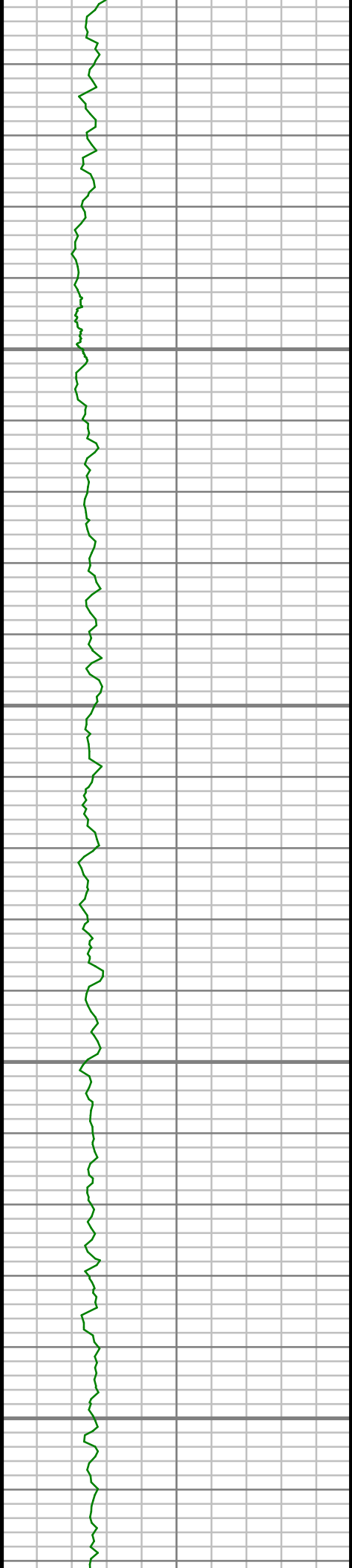
4200

4250

4300

4350



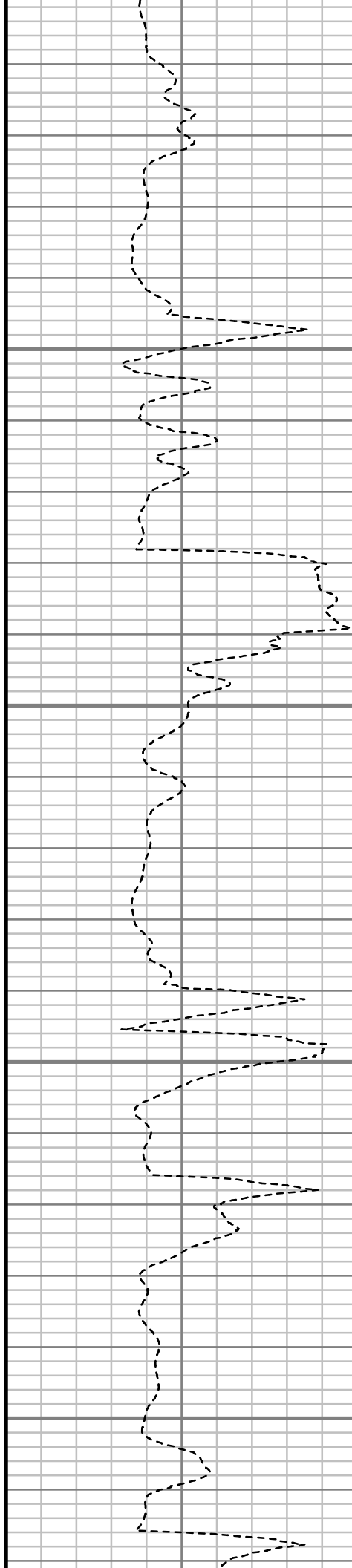


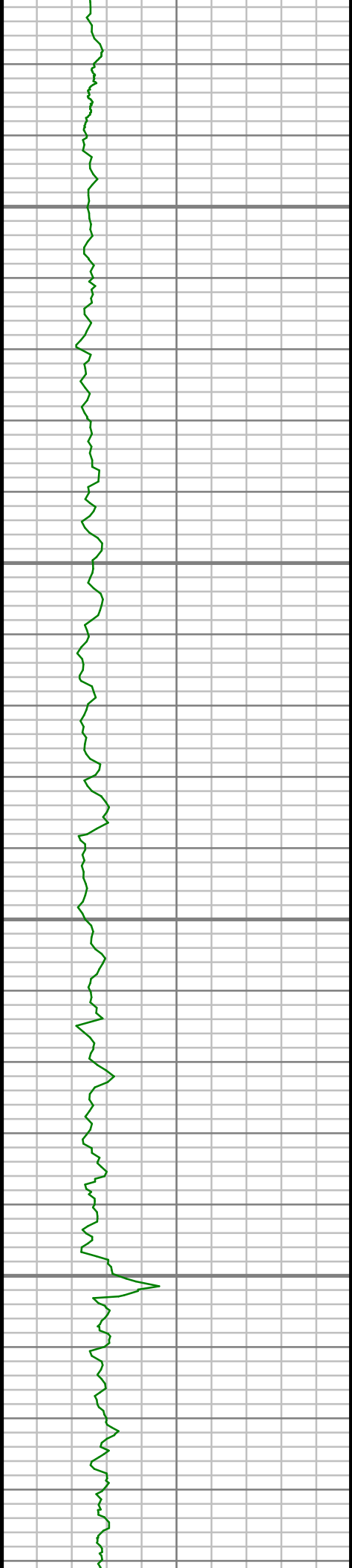
4400

4450

4500

4550



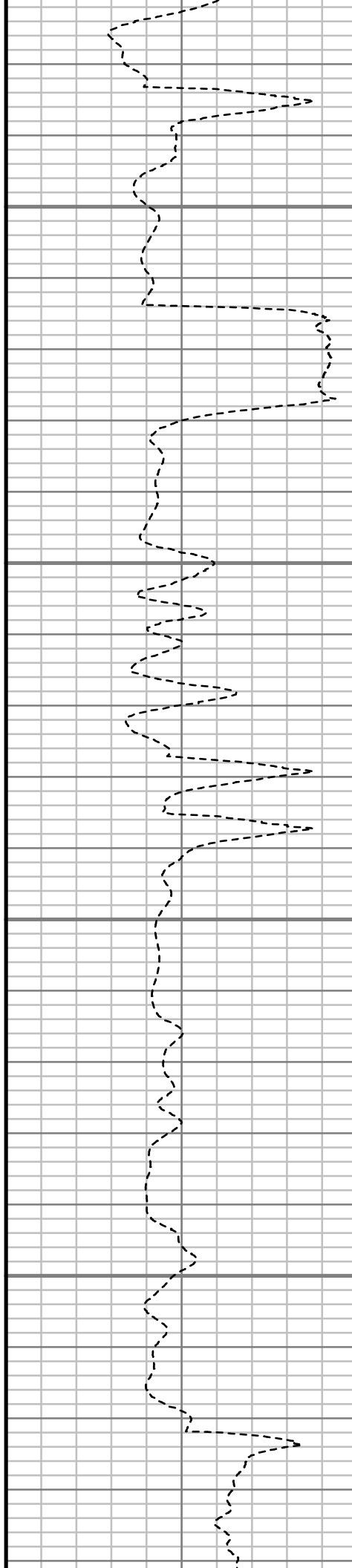


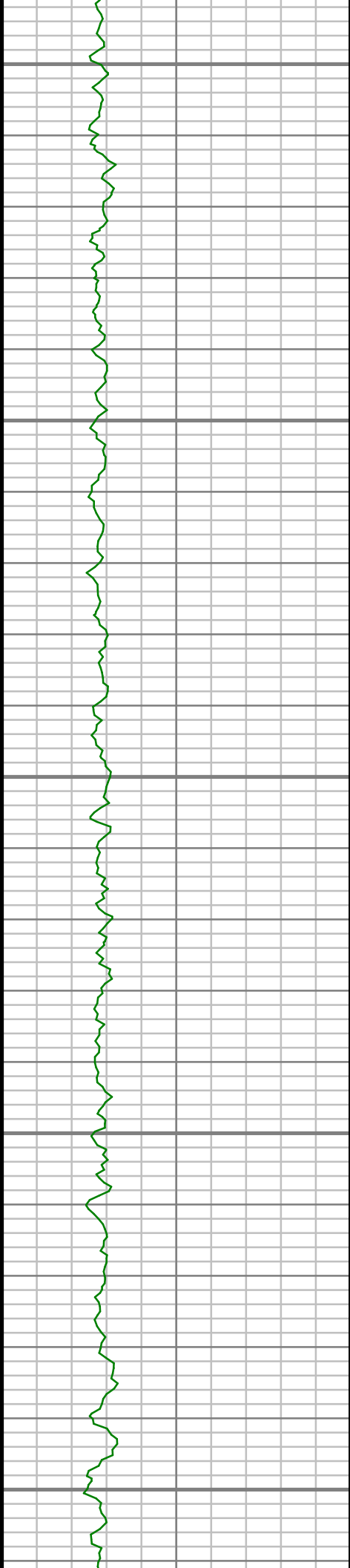
4600

4650

4700

4750





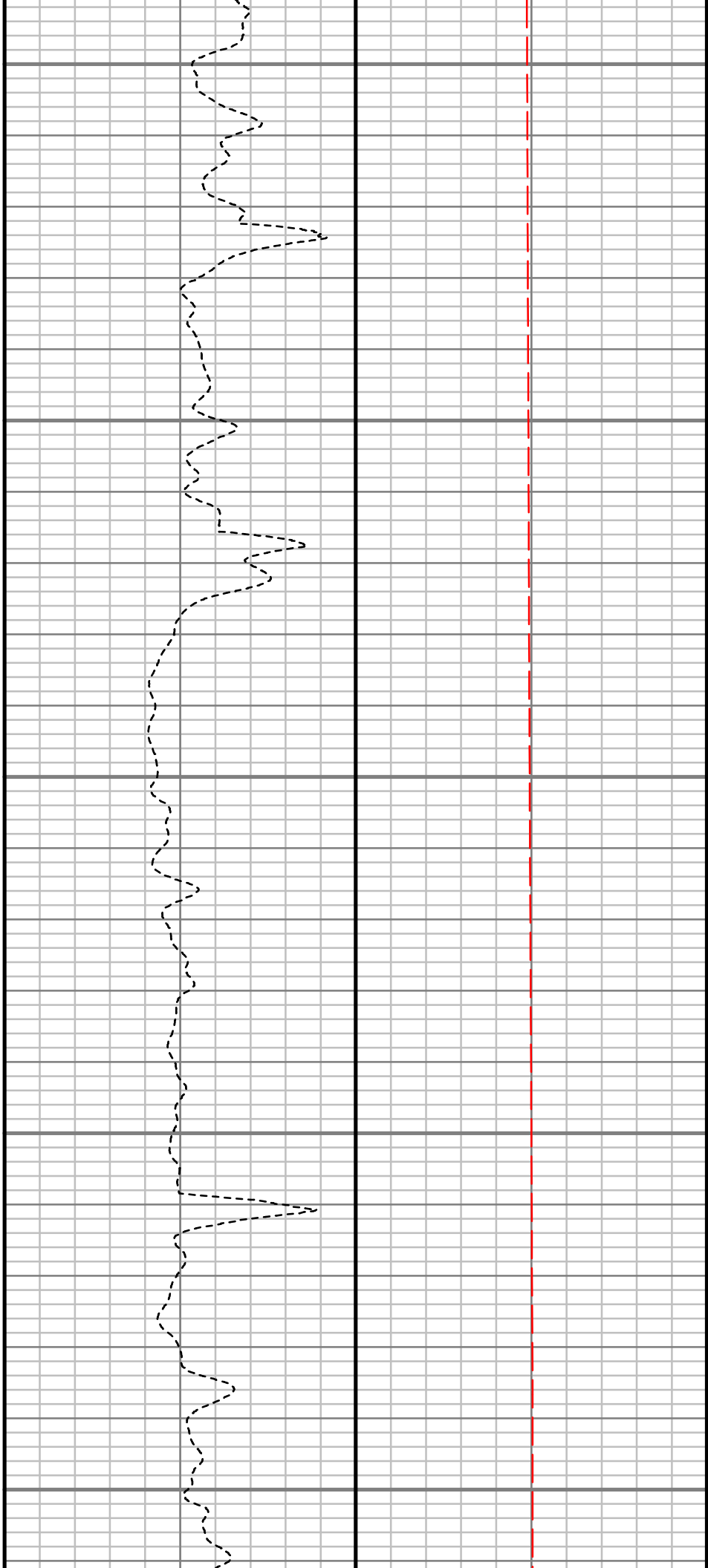
4800

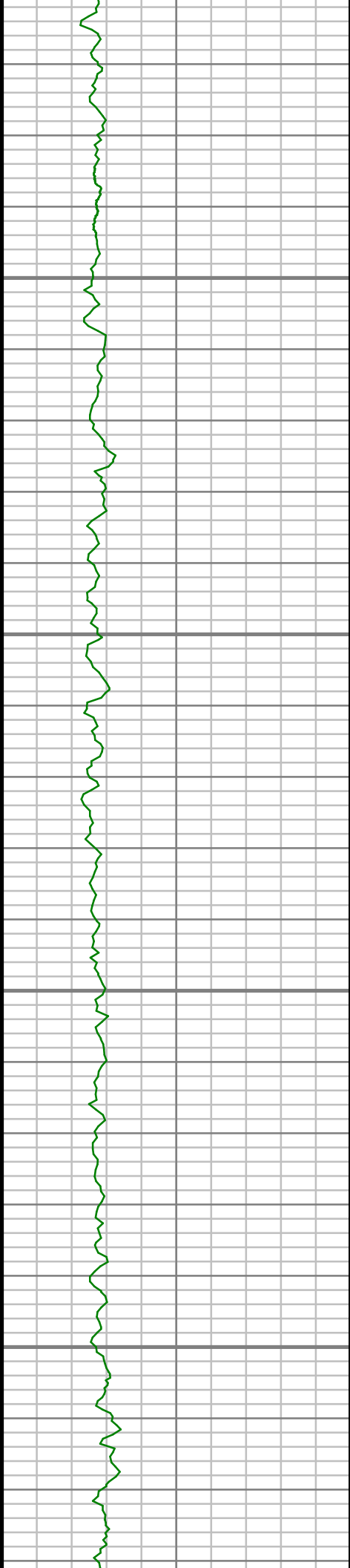
4850

4900

4950

5000



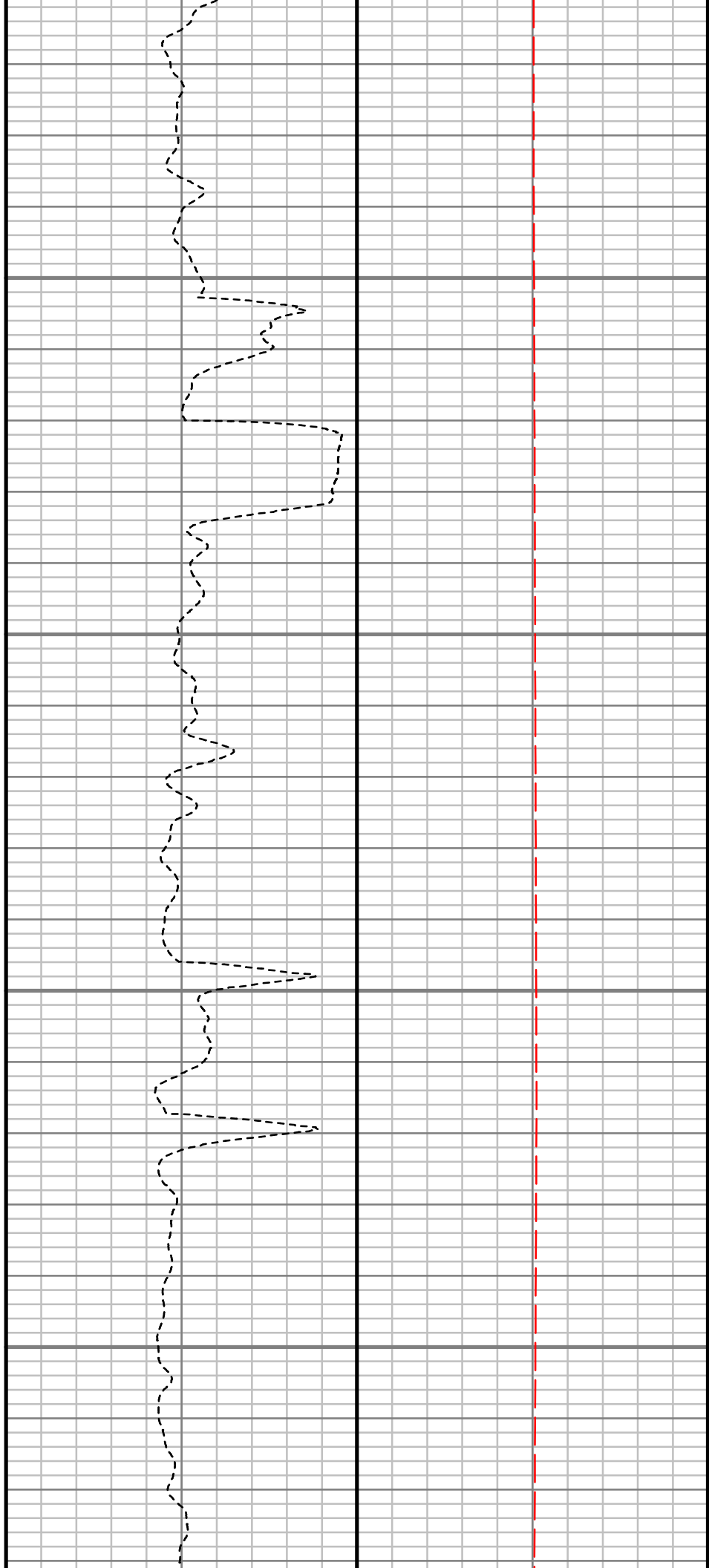


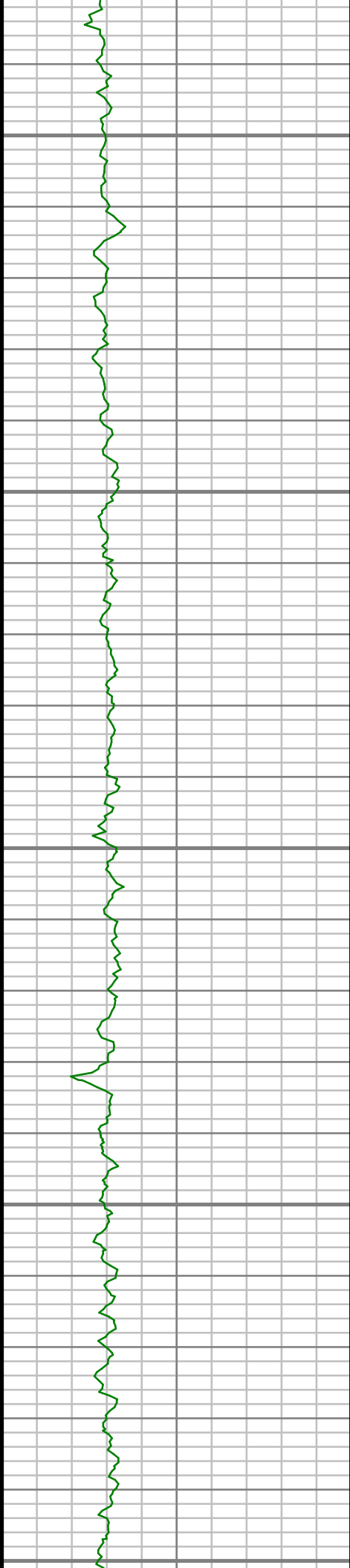
5050

5100

5150

5200





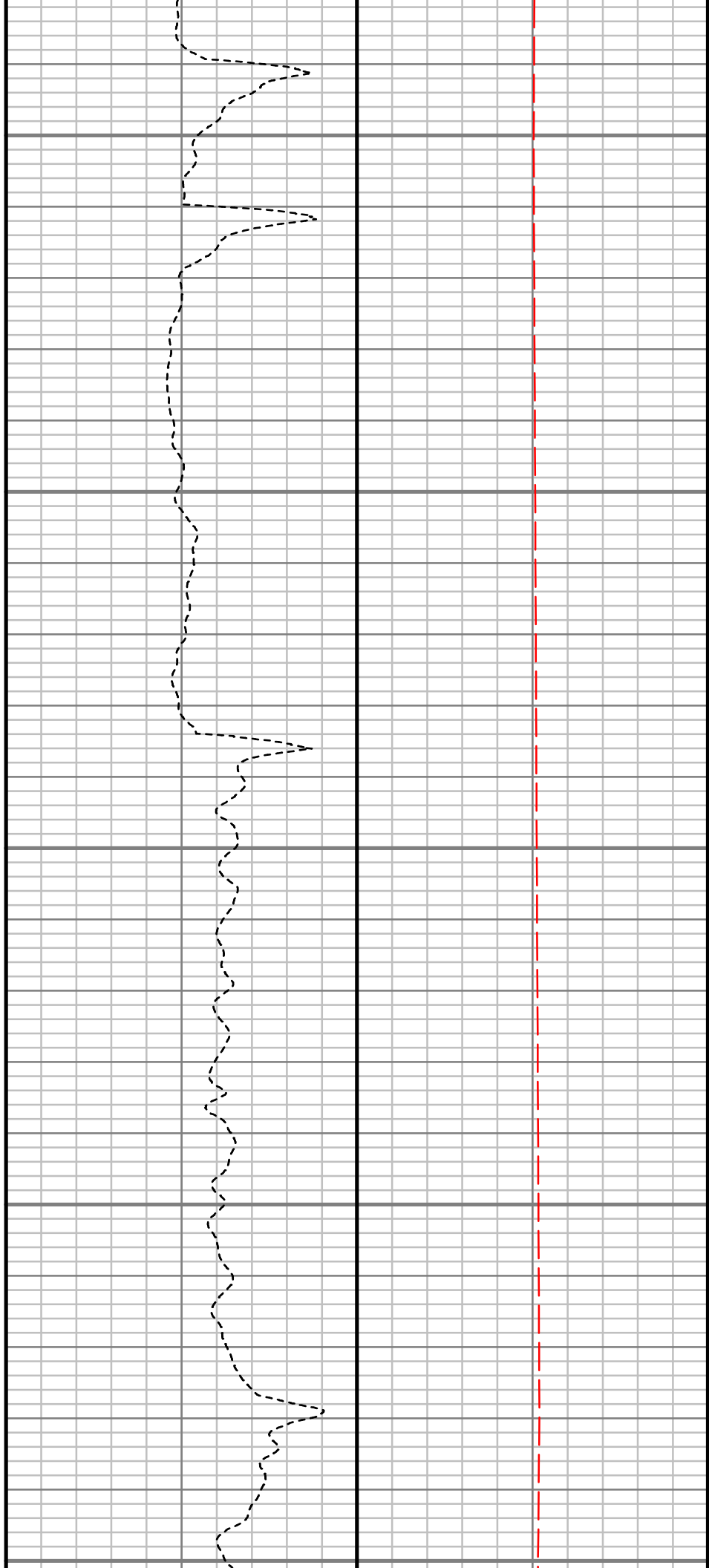
5250

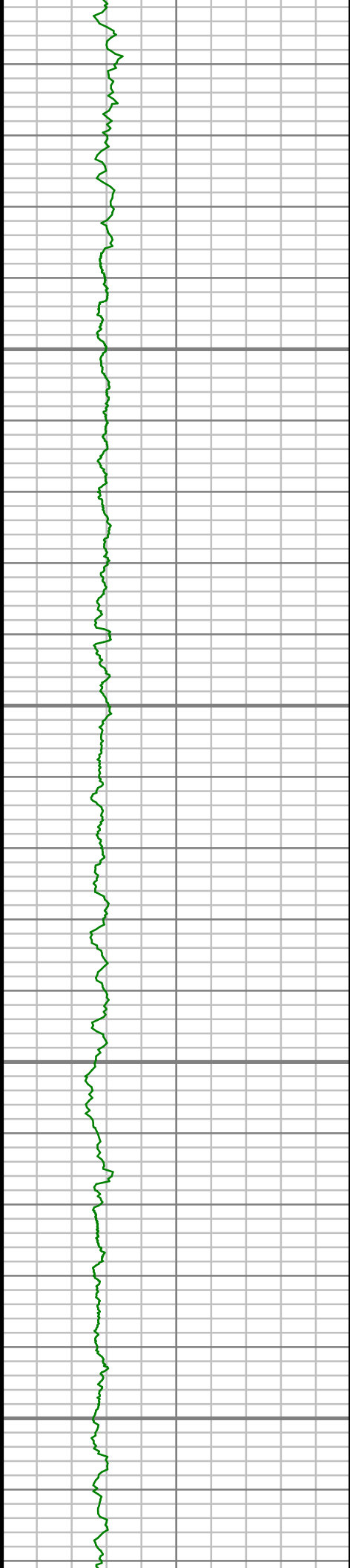
5300

5350

5400

5450



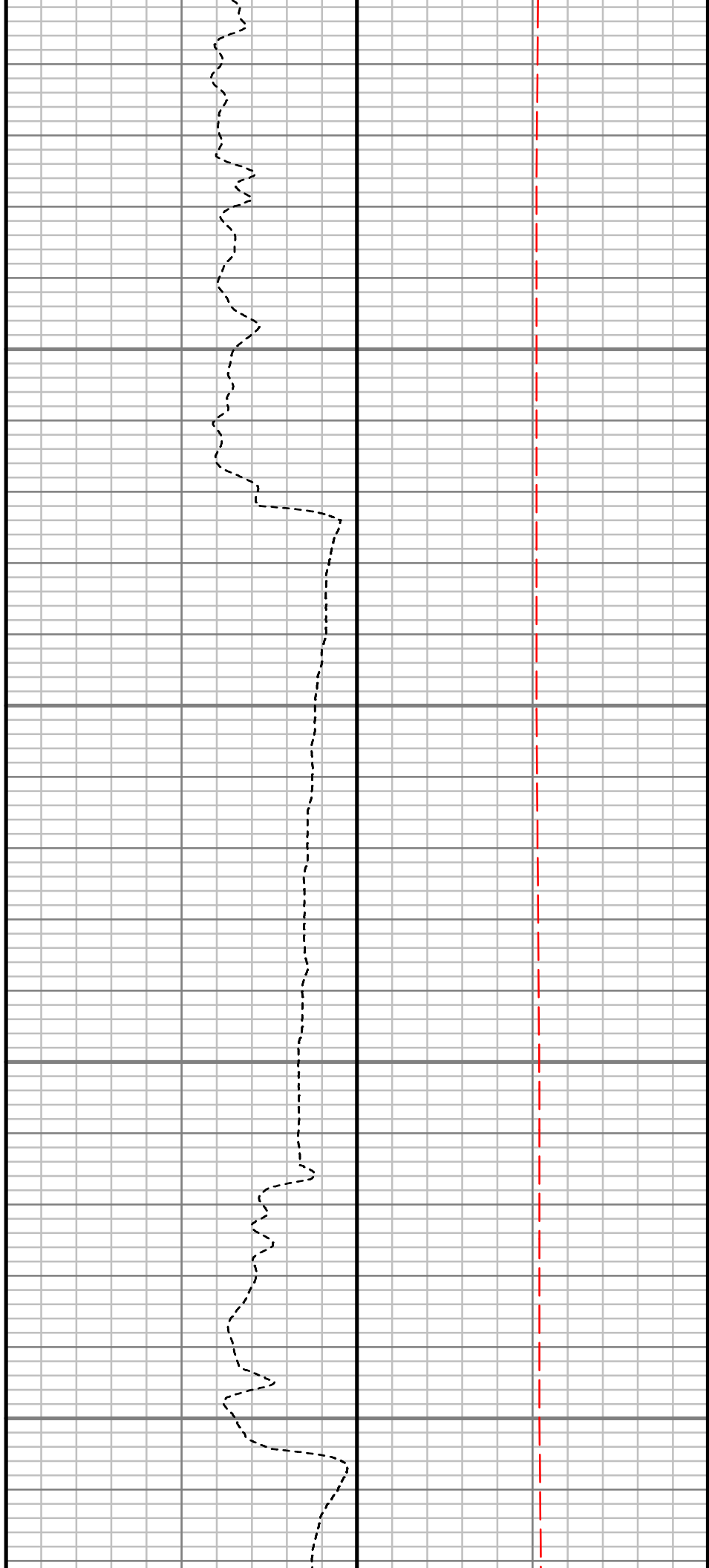


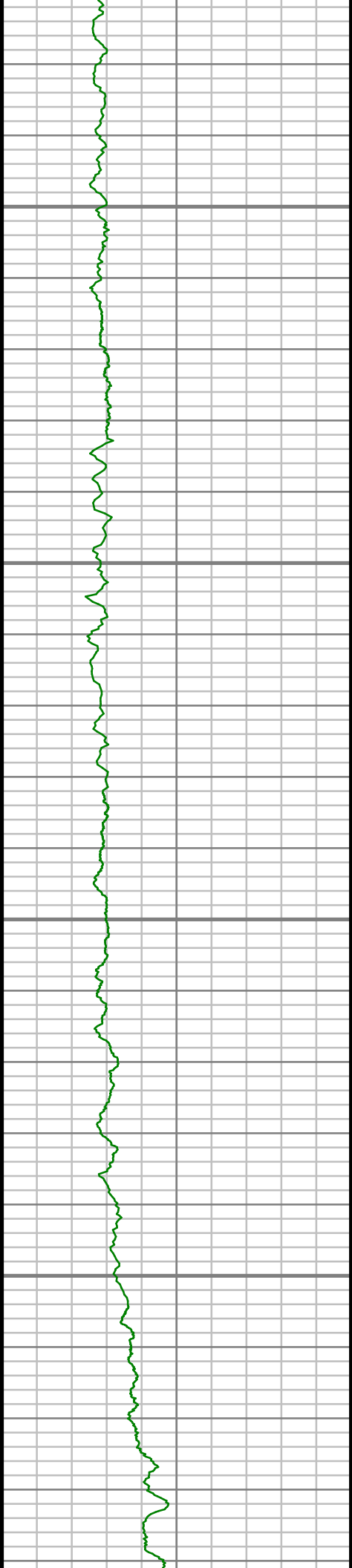
5500

5550

5600

5650



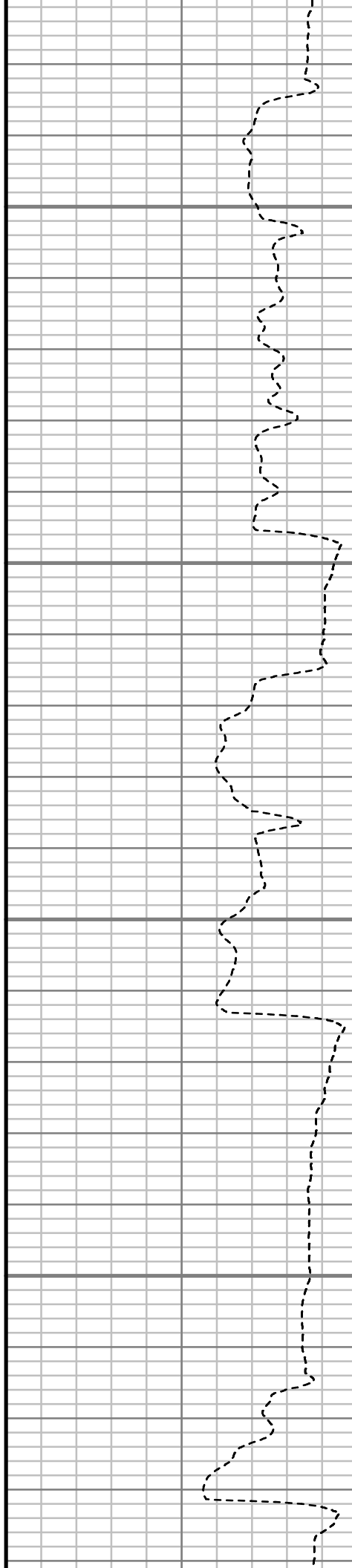


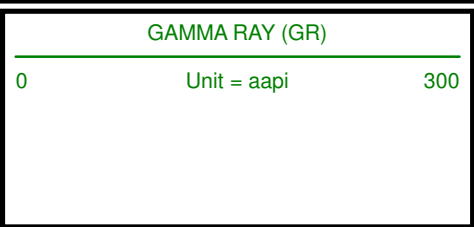
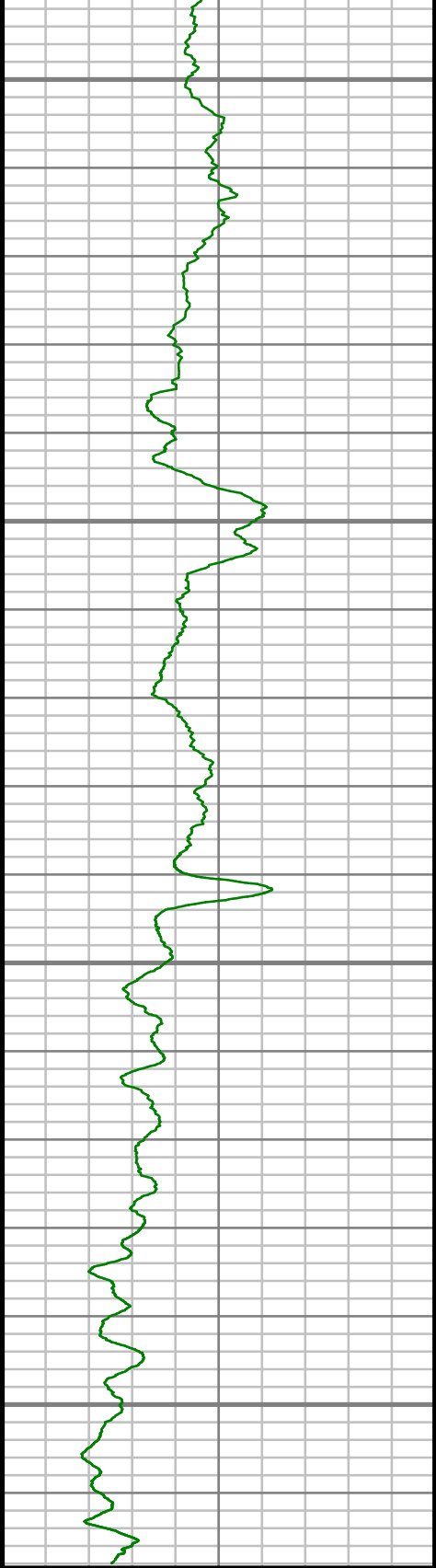
5700

5750

5800

5850





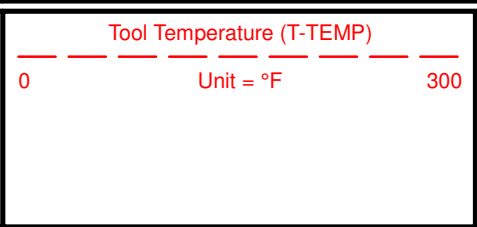
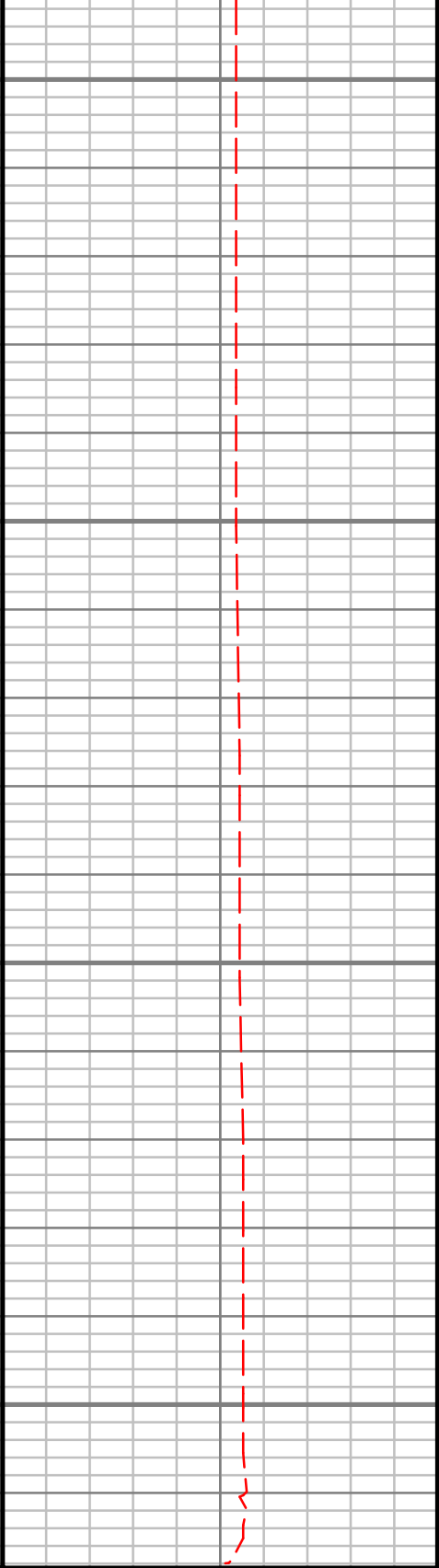
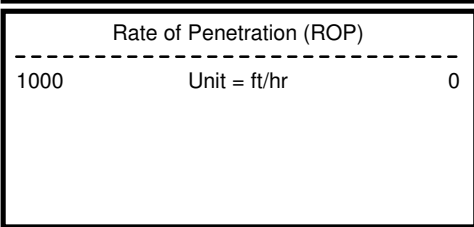
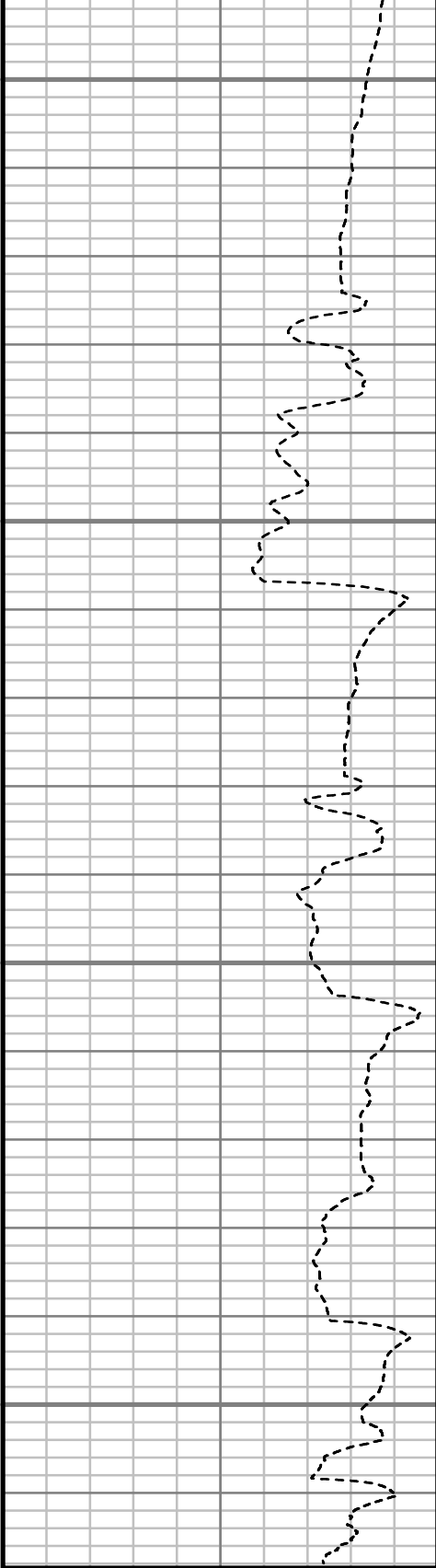
5900

5950

6000

6050

TRUE VERTICAL DEPTH
1:240 (ft)



GAMMA RAY

5" = 100' TVD