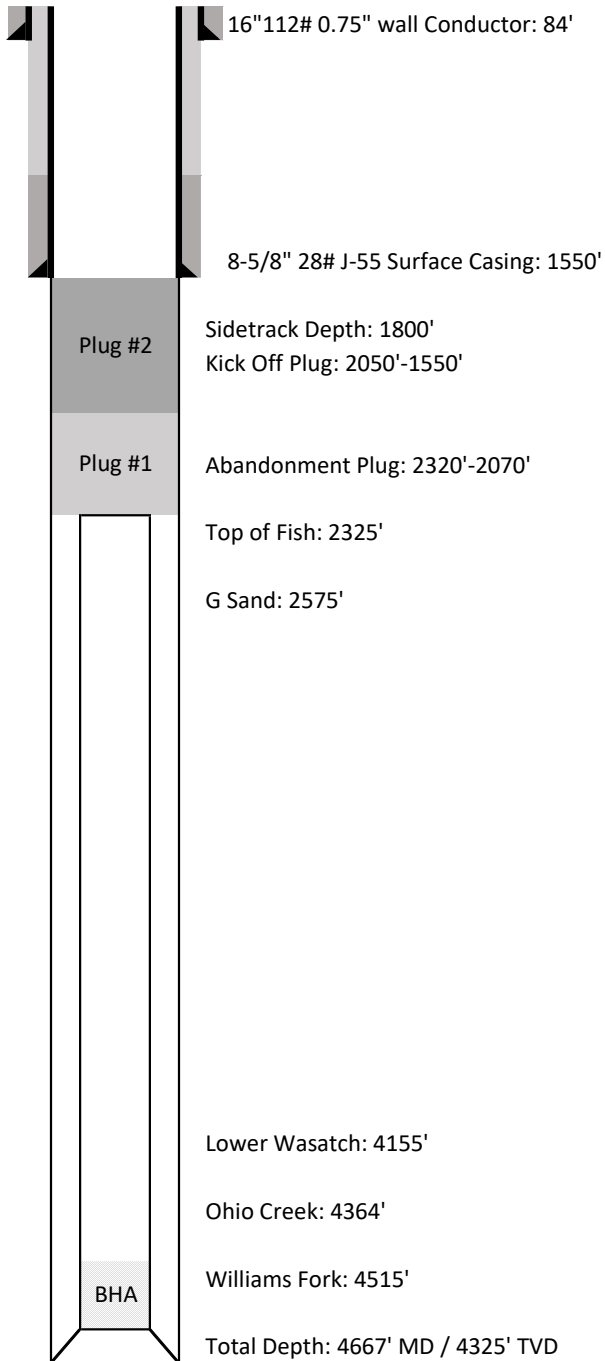


Laramie Energy LLC

Proposed Plugging Wellbore Schematic



Well Name	Nichols 0994-24-16E
API No.	05-077-10400-00
Diagram Date	
Legal Location	SENW 24 9S 94W 6th PM
GPS Coordinates	Lat 39.263283
	Long -107.830839
Field	Brush Creek
County	Mesa
State	Colorado
G.L. Elevation	7212'
K.B. Elevation	7236'

Cementing Details

Conductor Pipe

16" 112# 0.750" wall set at 60'
4yds of Concrete to surface

Surface Casing

8-5/8" 28# J-55 set at 1550'
Lead: 171sk of 12.0ppg lead
ALTCem S100-12
2.52cf/sk
Tail: 107sk of 12.5ppg tail
ALTCem S100-12
2.22cf/sk
19bbls of good cement to surface

Fish Description

PDC Bit
6-1/2" Mud Motor - 30'
6-1/2" Drill Collars w/ EM MWD (No Gamma) - 79'
4-1/2" HWDP - 878'
4-1/2" DP - 1355'
Total Fish Length: 2342'

Plug 1 - Abandonment Plug

2320'-2070': 88sk of 15.8ppg 1.15ft³/sk

Plug 2 - Kick Off Plug

2050'-1550': 273sk of 17ppg 0.99ft³/sk

*All depths are referenced to KB
Not to scale*