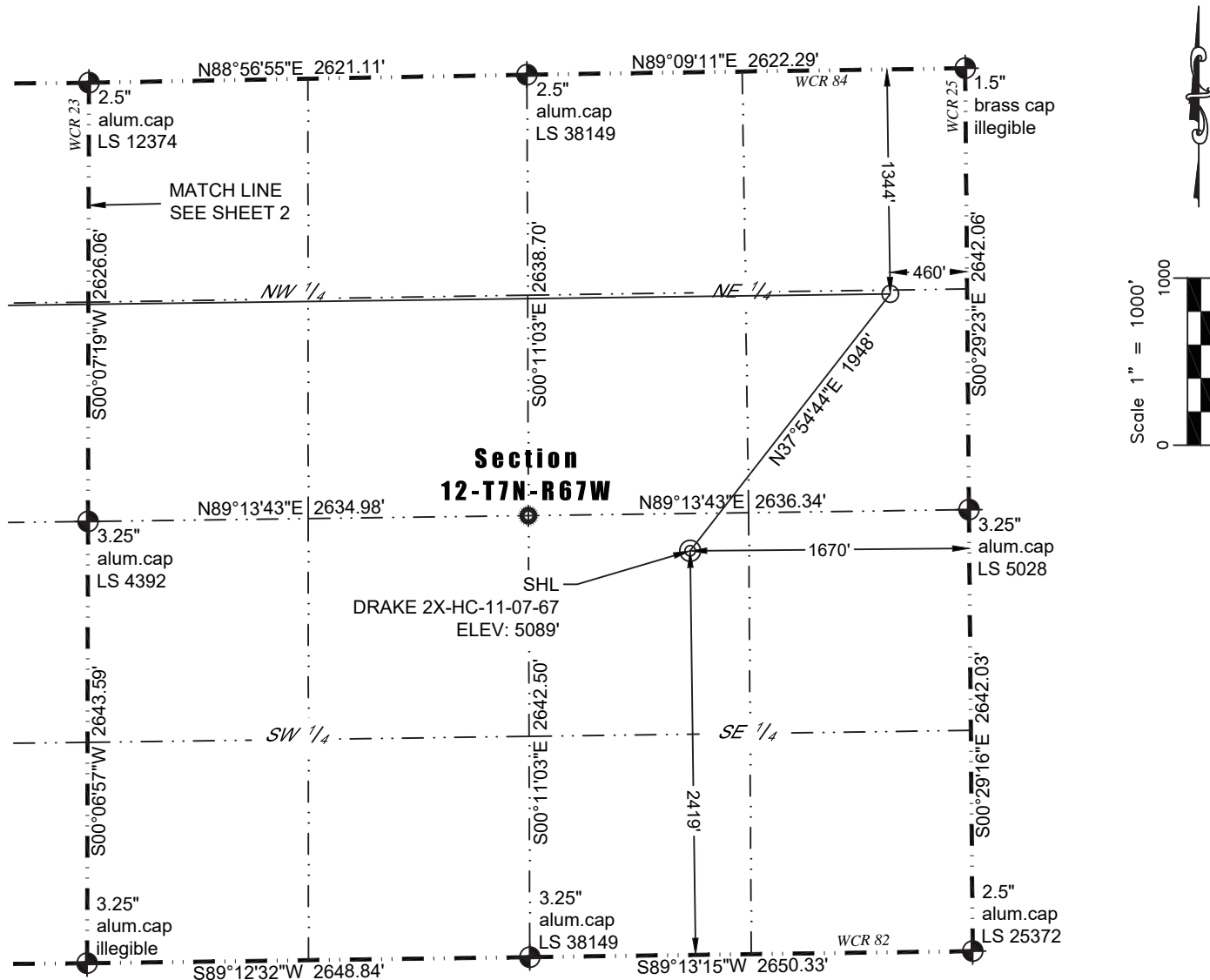


# WELL LOCATION CERTIFICATE

THIS MAP DOES NOT REPRESENT A BOUNDARY SURVEY



In accordance with a request from Kit Tincer of Nickel Road Operating LLC, Washburn Land Surveying, LLC has determined the location of the **DRAKE 2X-HC-11-07-67** well site to be SHL: 2419' FSL and 1670' FEL, (LPL: 1344' FNL and 460' FEL), (BHL: 1344' FNL and 460' FWL), as measured at ninety (90) degrees from the section lines of Sections 11 and 12, Township 7 North, Range 67 West of the 6th Principal Meridian, Weld County, Colorado.

#### Proposed Surface Hole Data:

Latitude: N 40.588174°  
 Longitude: W 104.837823°  
 PDOP: 1.3

#### Proposed Landing Point Data:

Latitude: N 40.592369°  
 Longitude: W 104.833471°

#### Proposed Bottom Hole Data:

Latitude: N 40.592220°  
 Longitude: W 104.868071°

#### LEGEND

- ⊕ - Found Survey Monument
- ⊙ - Calculated Position
- ⊙ - Surface Hole Location (SHL)
- - Landing Point Location (LPL)
- × - Bottom Hole Location (BHL)

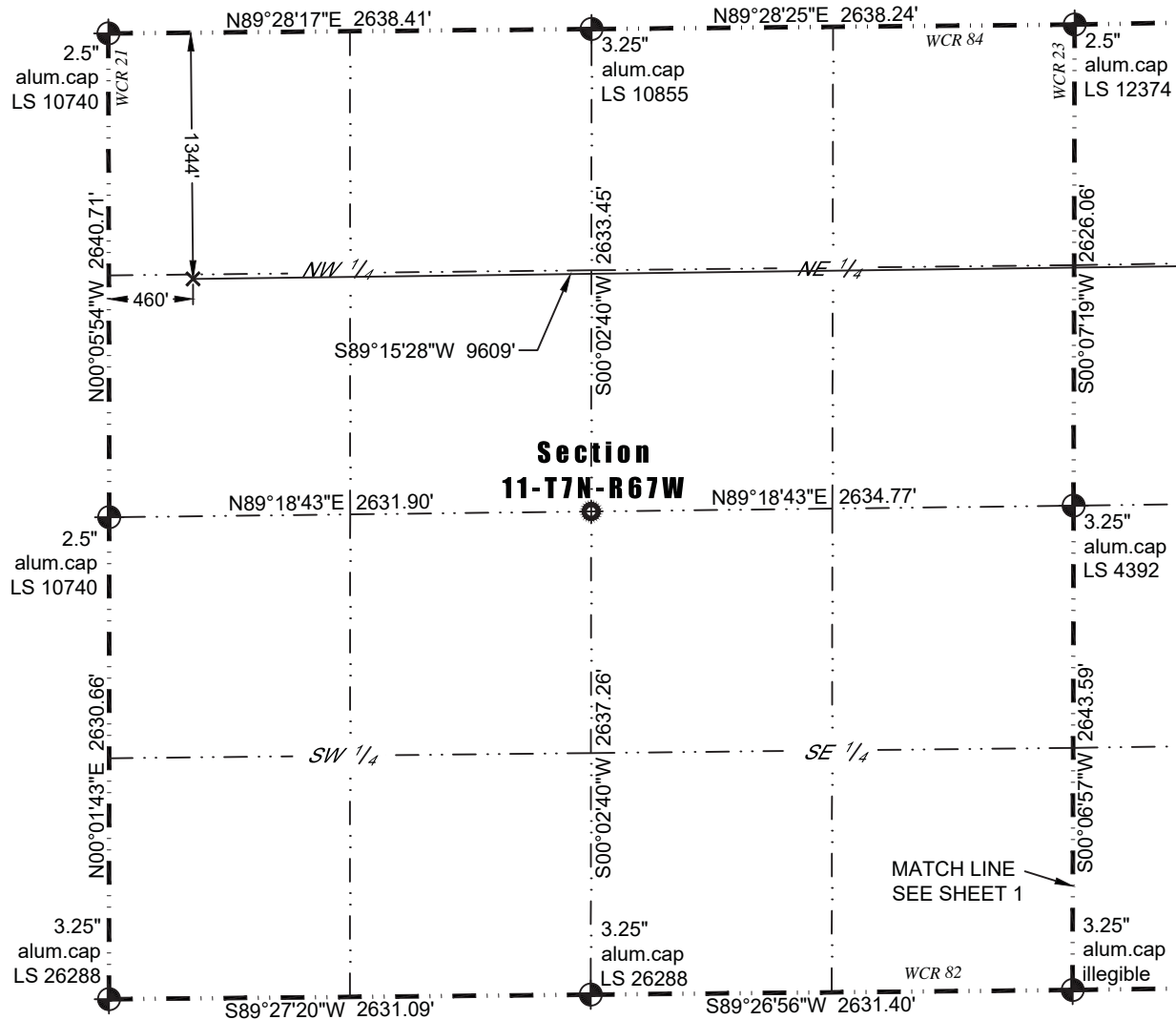
I hereby certify that this Well Location Certificate was prepared by me or under my direct supervision on 10/4/2017 for and on behalf of Nickel Road Operating LLC that it is not a Land Survey Plat or an Improvement Survey Plat and that it is not to be relied upon for establishment of fences, buildings, or other future improvement lines.

John Robert McGeehee LS#38219  
 Well: DRAKE 2X-HC-11-07-67 WLC

#### Notes:

- 1) Bearings and distances based on NAD 83 Colorado North State Plane Coordinate, using RTK GPS observations taken 9/15/17 by operator Jason Dahlman.
- 2) Conversion factor to ground (1.0002658663).
- 3) Elevations based on NAVD 88 GPS heights and Geoid 2009 corrections.
- 4) See Location Drawing for visible improvements within 500 feet of Pad Site.
- 5) The surface use is a cultivated field.

NOTICE: According to Colorado law you must commence any legal action based upon any defect in this W.L.C. within three years after you first discover such defect. In no event may any action based upon any defect in this W.L.C. be commenced more than ten years from this said date of the certification shown hereon.



## LEGEND

- - Found Survey Monument
- - Calculated Position
- ⊙ - Surface Hole Location (SHL)
- - Landing Point Location (LPL)
- ✕ - Bottom Hole Location (BHL)