



March 16, 2018

Colorado Oil and Gas Conservation Commission
1120 Lincoln Street, Suite 801
Denver, CO 80203

RE: Proposed Wellbore Spacing Unit
Dittmer KE 20-032HC
Codell New Drill
NENW Sec. 32, Township 1N, Range 66W, 6th P.M.
Weld County, Colorado

Dear Director,

Great Western Operating Company, LLC (Great Western) is planning to drill the above captioned well in accordance with the provisions of Colorado Oil and Gas Conservation Commission (COGCC) Rule 318A.e.

Great Western's proposed wellbore spacing unit consists of:

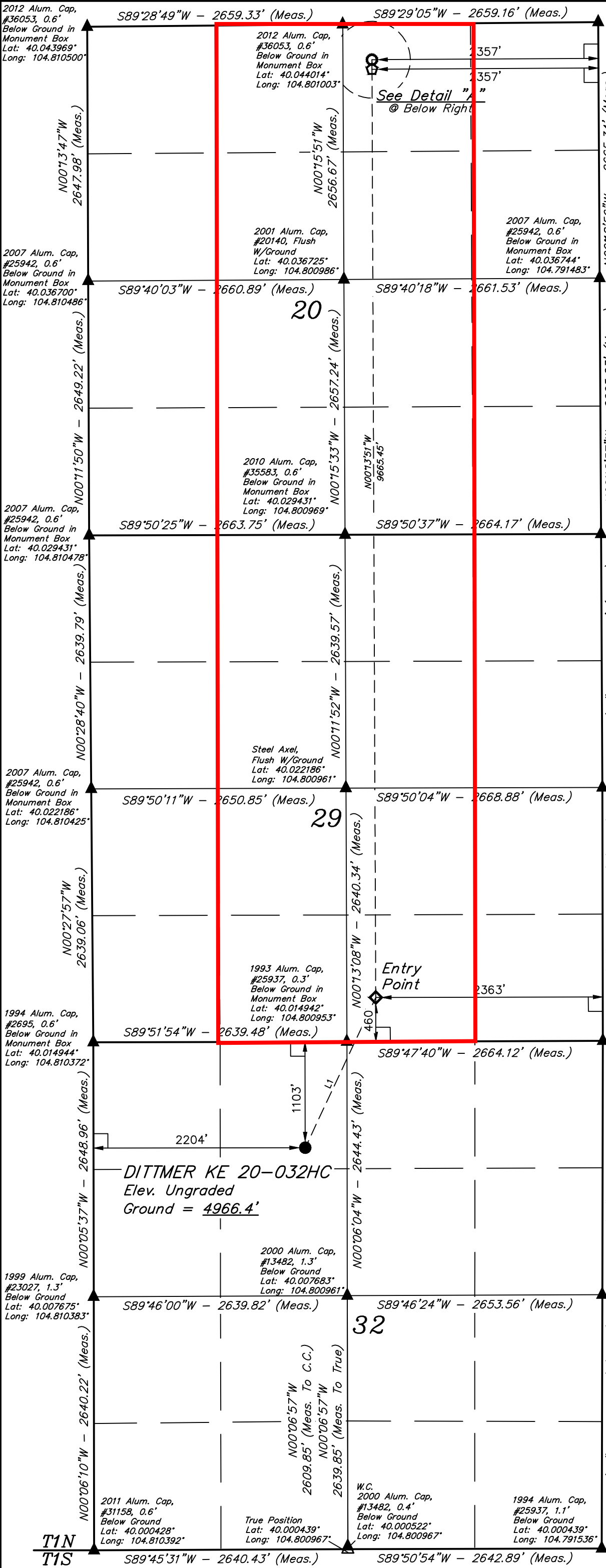
Township 1N, Range 66W (Weld County):
Section 20: W2E2, E2W2
Section 29: W2E2, E2W2

Total Acres: 645ac

The 30 day notification time period has passed and we have not yet received any objections to such well locations or proposed spacing unit, therefore Great Western hereby requests the Director to approve the above mentioned well. Great Western respectfully requests the COGCC review the enclosed map illustrating the proposed wellbore spacing unit.

Respectfully,

Natalie Svendsen
Regulatory Analyst
Great Western Operating Company, LLC



LEGEND:

- 90° SYMBOL
- PROPOSED WELLHEAD.
- ENTRY POINT.
- BTM PERF.
- TARGET BOTTOM HOLE.
- SECTION CORNERS LOCATED. (NAD 83)
- SECTION CORNERS RE-ESTABLISHED. (Not Set on Ground.) (NAD 83)

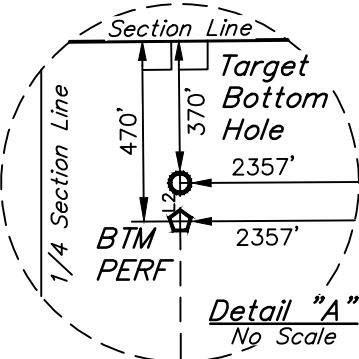
T1N, R66W, 6th P.M.

N

1000'
500'
0'
1000'

BASIS OF BEARINGS
BASIS OF BEARINGS IS A G.P.S. OBSERVATION

BASIS OF ELEVATION
HUBBS TRIANGULATION STATION LOCATED IN THE NE 1/4 OF SECTION 21, T1N, R64W, 6th. P.M., TAKEN FROM THE KEENESBURG, QUADRANGLE, COLORADO, WELD COUNTY, 7.5 MINUTE QUAD (TOPOGRAPHIC MAP) PUBLISHED BY THE UNITED STATES DEPARTMENT OF THE INTERIOR, GEOLOGICAL SURVEY. SAID ELEVATION IS MARKED AS BEING 5168 FEET.



LINE TABLE		
LINE	DIRECTION	LENGTH
L1	N25°07'11"E	1728.10'
L2	N00°18'56"W	100.00'

PDOP = 1.5

NAD 83 (SURFACE LOCATION)	
LATITUDE	= 40°00'42.90" (40.011917)
LONGITUDE	= 104°48'09.04" (104.802511)
NAD 27 (SURFACE LOCATION)	
LATITUDE	= 40°00'42.96" (40.011933)
LONGITUDE	= 104°48'07.14" (104.801983)
NAD 83 (ENTRY POINT)	
LATITUDE	= 40°00'58.34" (40.016206)
LONGITUDE	= 104°47'59.55" (104.799875)
NAD 27 (ENTRY POINT)	
LATITUDE	= 40°00'58.39" (40.016219)
LONGITUDE	= 104°47'57.66" (104.799350)
NAD 83 (BTM PERF)	
LATITUDE	= 40°02'33.83" (40.042731)
LONGITUDE	= 104°47'59.71" (104.799919)
NAD 27 (BTM PERF)	
LATITUDE	= 40°02'33.89" (40.042747)
LONGITUDE	= 104°47'57.82" (104.799394)
NAD 83 (TARGET BOTTOM HOLE)	
LATITUDE	= 40°02'34.82" (40.043005)
LONGITUDE	= 104°47'59.72" (104.799921)
NAD 27 (TARGET BOTTOM HOLE)	
LATITUDE	= 40°02'34.88" (40.043021)
LONGITUDE	= 104°47'57.82" (104.799394)

CERTIFICATE
THIS IS TO CERTIFY THAT THE ABOVE PLAT WAS PREPARED FROM FIELD NOTES OF ACTUAL SURVEYS MADE BY ME OR UNDER MY SUPERVISION, AND THAT THE SAME ARE TRUE AND CORRECT TO THE BEST OF MY KNOWLEDGE AND BELIEF.

REGISTERED LAND SURVEYOR
REGISTRATION NO. 28285
STATE OF COLORADO
02-05-18

REV: 5 02-05-18 K.B. (BP ADD & TBH CHANGE)

GREAT WESTERN OPERATING COMPANY

DITTMER KE 20-032HC
NE 1/4 NW 1/4, SECTION 32, T1N, R66W, 6th P.M.
WELD COUNTY, COLORADO



UELS, LLC
Corporate Office * 85 South 200 East
Vernal, UT 84078 * (435) 789-1017

SURVEYED BY: DALLAS NIELSEN, B.C.	SURVEY DATE: 04-03-15
DRAWN BY: J.W.	DATE DRAWN: 04-07-15
SCALE: 1" = 1000'	

WELL LOCATION PLAT