






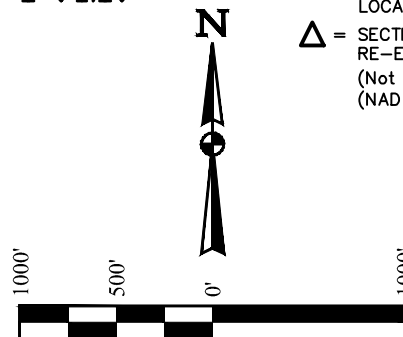


*T1N, R66W,
6th P.M.*

LEGEND:

-  = 90° SYMBOL
 = PROPOSED WELLHEAD.
 = ENTRY POINT.
 = BTM PERF.
 = TARGET BOTTOM HOLE.
 = SECTION CORNERS LOCATED. (NAD 83)
 = SECTION CORNERS RE-ESTABLISHED.
 (Not Set on Ground.)
 (NAD 83)

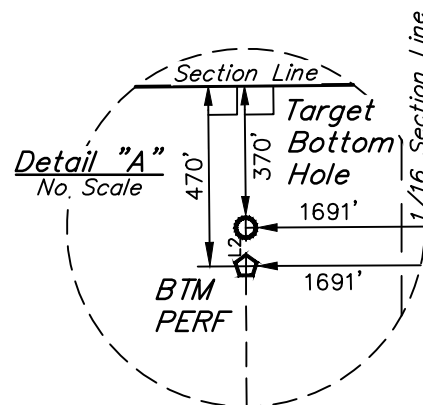


BASIS OF BEARINGS

BASIS OF BEARINGS IS A G.P.S. OBSERVATION

BASIS OF ELEVATION

HUBBS TRIANGULATION STATION LOCATED IN THE NE 1/4 OF SECTION 21,
T1N, R64W, 6th. P.M., TAKEN FROM THE KEENESBURG, QUADRANGLE,
COLORADO, WELD COUNTY, 7.5 MINUTE QUAD (TOPOGRAPHIC MAP)
PUBLISHED BY THE UNITED STATES DEPARTMENT OF THE INTERIOR,
GEOLOGICAL SURVEY. SAID ELEVATION IS MARKED AS BEING 5168 FEET.



LINE TABLE

LINE	DIRECTION	LENGTH
L1	N45°45'42"E	2103.34'
L2	N00°18'56"W	100.00'

PDOP = 1.3

NAD 83 (SURFACE LOCATION)
LATITUDE = 40°00'43.88" (40.012189)
LONGITUDE = 104°48'10.39" (104.802886)
NAD 27 (SURFACE LOCATION)
LATITUDE = 40°00'43.94" (40.012206)
LONGITUDE = 104°48'08.49" (104.802358)
NAD 83 (ENTRY POINT)
LATITUDE = 40°00'58.34" (40.016206)
LONGITUDE = 104°47'50.97" (104.797492)
NAD 27 (ENTRY POINT)
LATITUDE = 40°00'58.40" (40.016222)
LONGITUDE = 104°47'49.07" (104.796964)
NAD 83 (BTM PERF)
LATITUDE = 40°02'33.87" (40.042742)
LONGITUDE = 104°47'51.15" (104.797542)
NAD 27 (BTM PERF)
LATITUDE = 40°02'33.93" (40.042758)
LONGITUDE = 104°47'49.25" (104.797014)
NAD 83 (TARGET BOTTOM HOLE)
LATITUDE = 40°02'34.86" (40.043016)
LONGITUDE = 104°47'51.16" (104.797543)
NAD 27 (TARGET BOTTOM HOLE)
LATITUDE = 40°02'34.92" (40.043033)
LONGITUDE = 104°47'49.26" (104.797016)

CERTIFICATE

THIS IS TO CERTIFY THAT THE ABOVE PLAT WAS PREPARED FROM FIELD
NOTES OF ACTUAL SURVEYS MADE BY ME OR UNDER MY SUPERVISION,
AND THAT THE SAME ARE TRUE AND CORRECT TO THE BEST OF MY
KNOWLEDGE AND BELIEF.

REGISTERED LAND SURVEYOR
REGISTRATION NO. 28285
STATE OF COLORADO

REV: 5 02-05-18 K.B. (BP ADD & TBH CHANGE)

GREAT WESTERN OPERATING COMPANY

DITTMER KE 20-034HC
NE 1/4 NW 1/4, SECTION 32, T1N, R66W, 6th P.M.
WELD COUNTY, COLORADO



UELS, LLC
Corporate Office * 85 South 200 East
Vernal, UT 84078 * (435) 789-1017

SURVEYED BY: DALLAS NIELSEN, B.C.	SURVEY DATE: 04-03-15
DRAWN BY: J.W.	DATE DRAWN: 04-07-15
SCALE: 1" = 1000'	

WELL LOCATION PLAT