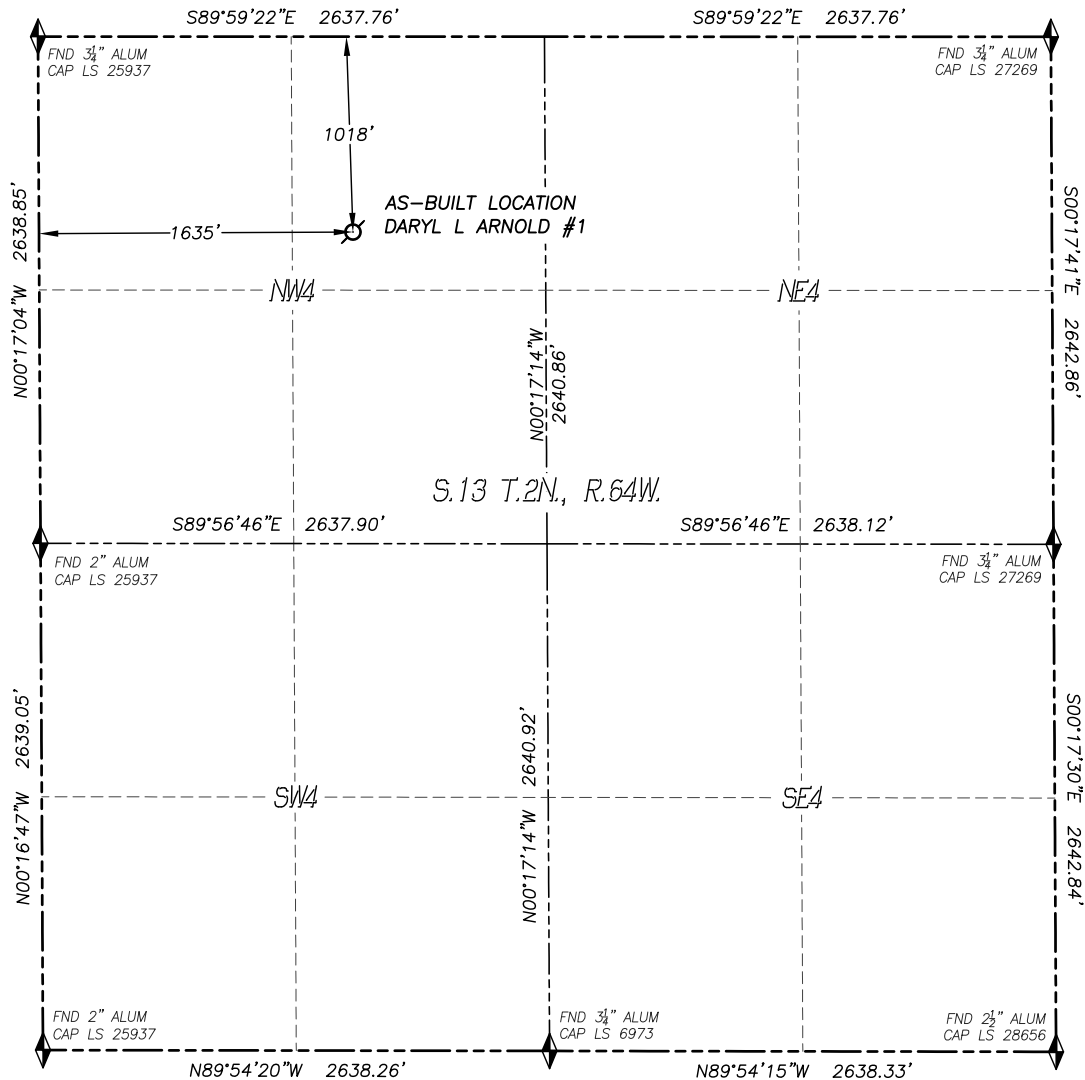


WELL AS-BUILT SURVEY

DARYL L ARNOLD #1

SECTION 13, TOWNSHIP 2 NORTH, RANGE 64 WEST OF THE 6TH P.M.

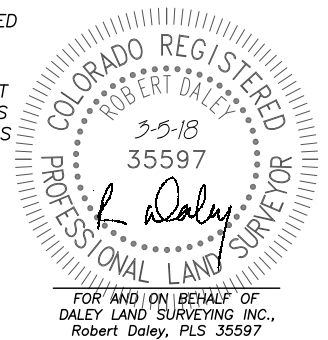


IN ACCORDANCE WITH A REQUEST FROM TYLER BEAVERS OF NOBLE ENERGY INC., DALEY LAND SURVEYING, INC. HAS DETERMINED THE SURFACE LOCATION OF THE DARYL L ARNOLD #1 WELL TO BE 1018' FNL, 1635' FWL, AS MEASURED AT NINETY (90) DEGREES FROM THE SECTION LINES OF SECTION 13, TOWNSHIP 2 NORTH, RANGE 64 WEST, OF THE 6TH PRINCIPAL MERIDIAN, WELD COUNTY, COLORADO.

I HEREBY STATE THAT THIS WELL AS-BUILT SURVEY WAS PREPARED BY ME OR UNDER MY DIRECT SUPERVISION, THAT THE WORK WAS COMPLETED ON 3/2/2018 FOR AND ON BEHALF OF NOBLE ENERGY, INC., AND THAT THIS MAP DOES NOT REPRESENT A BOUNDARY SURVEY, IT IS NOT A LAND SURVEY PLAT OR AN IMPROVEMENT SURVEY PLAT AND IT IS NOT TO BE RELIED UPON FOR THE ESTABLISHMENT OF FENCE, BUILDING OR OTHER FUTURE IMPROVEMENT LINES.

NOTES:

- 1) BEARINGS FOR THIS MAP ARE ASSUMED AND BASED UPON GPS OBSERVATIONS MADE BETWEEN MONUMENTS LOCATED AT THE SOUTHWEST CORNER AND WEST QUARTER CORNER OF SECTION 13, T.2N., R.64W.
- 2) HORIZONTAL DATUM IS NAD83.
- 3) VERTICAL DATUM IS NAVD88 AND ORIGINATES FROM THE LOCAL C.O.R.S. NETWORK, UTILIZING THE GEOID12A MODEL.
- 4) SURFACE USE: PASTURE/RANGELAND.
- 5) INST. OPERATOR: KYLE DALEY
- 6) NO EXCAVATION WAS DONE TO VERIFY LOCATION AS DETERMINED BY VISUAL INSPECTION AND METAL LOCATOR.



NAD 83 LATITUDE AND LONGITUDE

SURFACE LOCATION:

LATITUDE: N40.14285°
 LONGITUDE: W104.50342°
 ELEV: 4907'
 PDOP: 1.7
 QTR/QTR: NE4/NW4

LEGEND

- ◆ FOUND MONUMENT AS DESCRIBED
- ☀ PROPOSED WELL
- ⊗ EXISTING WELL
- BOTTOM HOLE
- ⊙ ABANDONED WELL
- ◆ CALCULATED POSITION

