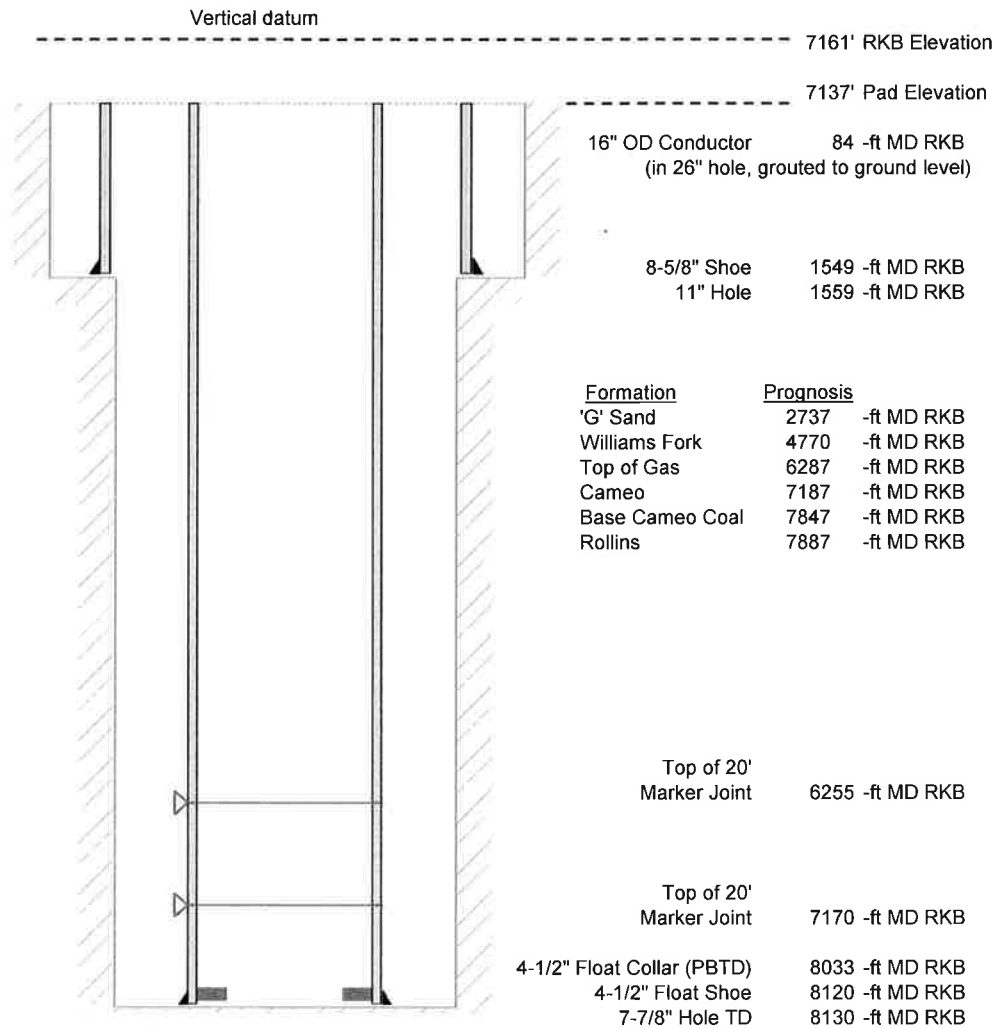


Laramie Energy, LLC  
 Nichols 0994-13-20E  
 Slot A-2  
 H&P 290 (24-ft KB)

API #: 077-10403-00  
 SW/4 NE/4 S24/T9S/R94W/6th PM  
 Mesa County, CO  
 Date of diagram: 2/6/2018



#### Cementing details

8-5/8" 24# J55 STC Surface Csg	Lead	Tail
Density (ppg)	12.0	12.5
Volume (sx)	168	120
Yield (cf/sx)	2.52	2.22
Top (ft RKB)	24	1024
Bottom (ft RKB)	1024	1549
Returns (full or partial)	Full	Full

4-1/2" 11.6# L-80 LTC Prod Csg	Lead	Tail
Density (ppg)	12.7	13.5
Volume (sx)	875	381
Yield (cf/sx)	1.97	1.90
Est Top (ft RKB)	1026	6087
Est Bottom (ft RKB)	6087	8120
Returns (full or partial)	Full	Full

Displacement
8.3 ppg
124 bbls

Other Remarks: Surface- 40 bbls cement to surface Production-12  
 bbls spacer to surface / Csg test failed