

Nichols 0994-24-01W
Mesa County, CO
Q180072 & RM-180064
Design #2

Company Name: Laramie Energy, LLC
Nichols 0994-24-01W
Mesa County, CO
Rig: H&P #290
Created By: Will Jircik
Date: 1/17/2018

PROJECT DETAILS:	Mesa County, CO
Geodetic System:	US State Plane 1983
Datum:	North American Datum 1983
Ellipsoid:	GRS 1980
Zone:	Colorado Central Zone
System Datum:	Mean Sea Level

T

M

Azimuths to True North

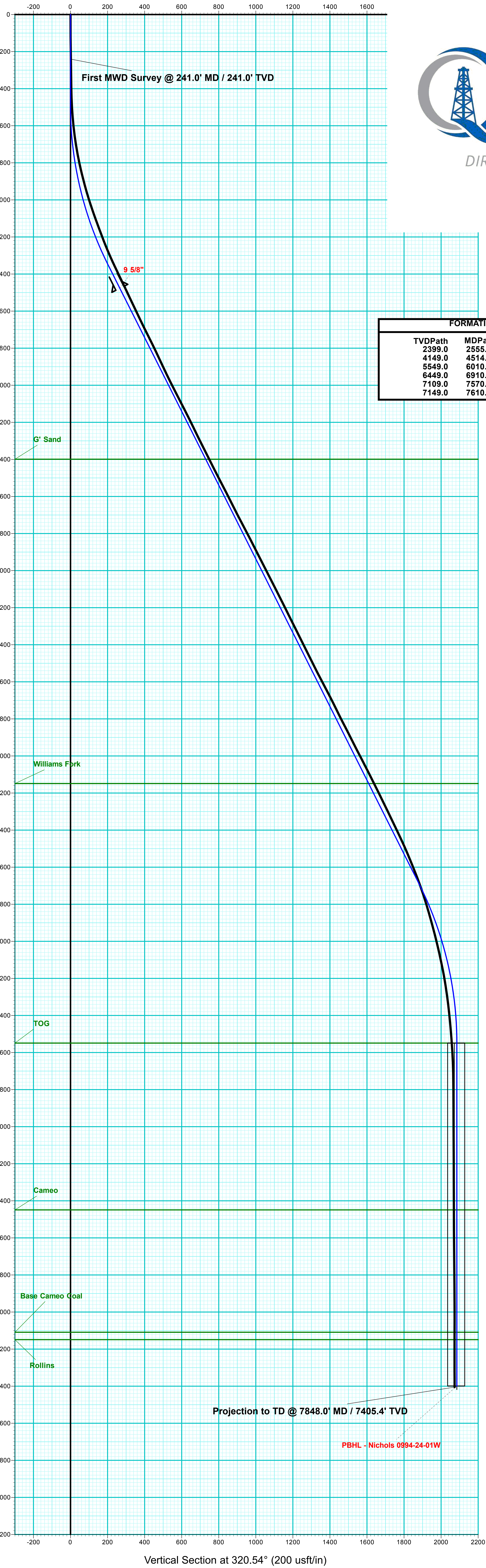
Magnetic North: 9.54°

Strength: 51352.7snT

Dip Angle: 65.42°

Date: 1/11/2018

Model: IGRF2015



FORMATION TOP DETAILS		
TVDPath	MDPath	Formation
2399.0	2555.6	G' Sand
4149.0	4514.2	Williams Fork
5549.0	6010.6	TOG
6449.0	6910.6	Cameo
7109.0	7570.6	Base Cameo Coal
7149.0	7610.6	Rollins

DESIGN #2 ANNOTATIONS									
MD	Inc	Azi	TVD	+N/-S	+E/-W	VSect	Departure	Annotation	
494.0	0.00	0.00	494.0	0.0	0.0	0.0	0.0	KOP (Build 3° / 100')	
1383.4	26.68	320.54	1351.6	157.0	-129.3	203.4	203.4	EOB @ 26.68° Inc. / 320.54° Azm	
5121.2	26.68	320.54	4691.4	1452.9	-1196.0	1881.8	1881.8	Drop 3° / 100'	
6010.6	0.00	0.00	5549.0	1609.9	-1325.2	2085.2	2085.2	EOD @ Vertical	
7860.6	0.00	0.00	7399.0	1609.9	-1325.2	2085.2	2085.2	TD @ 7860.6' MD / 7399.0' TVD	

DESIGN TARGET DETAILS								
Name	TVD	+N/-S	+E/-W	Northing	Easting	Latitude	Longitude	Shape
PBHL - Nichols 0994-24-01W	7699.0	1609.9	-1325.2	1531403.67	2338935.89	39.269109	-107.835264	Circle (Radius: 50.0)

