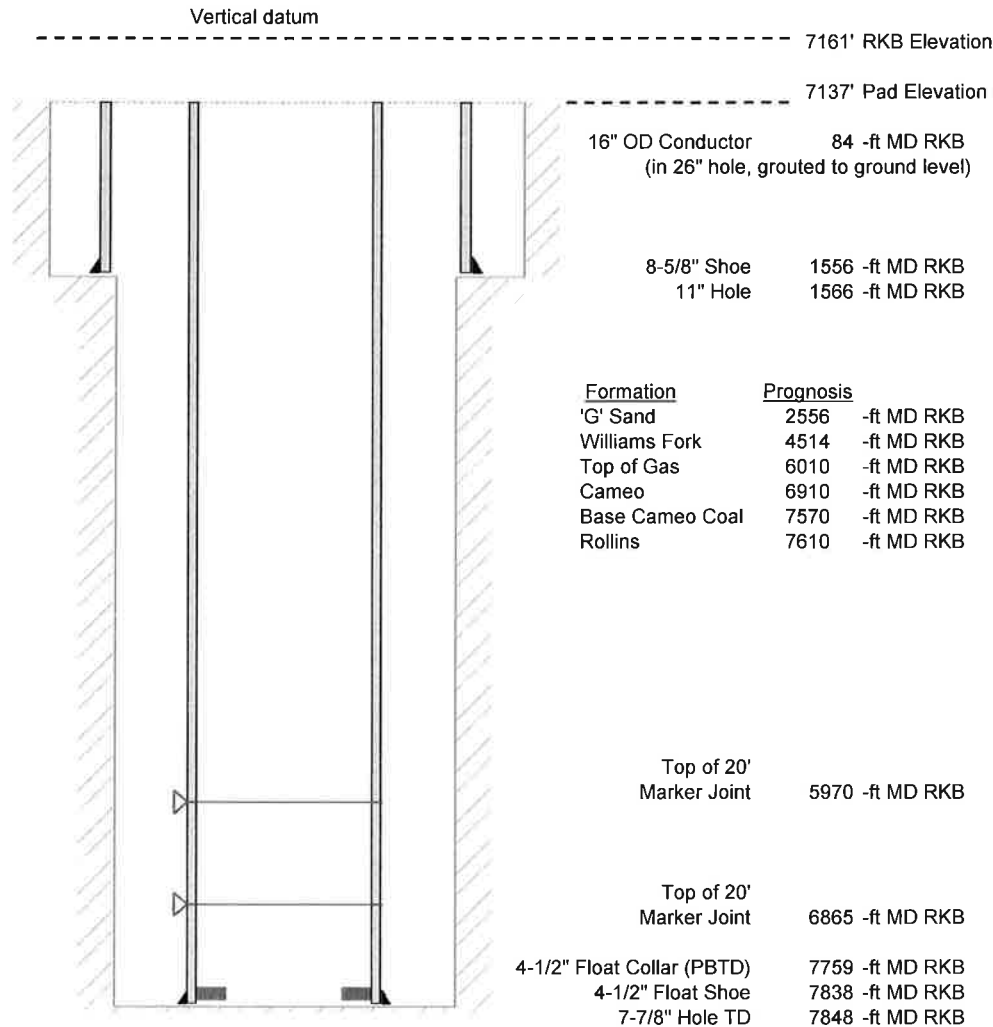


Laramie Energy, LLC  
 Nichols 0994-24-01W  
 Slot B-4  
 H&P 290 (24-ft KB)

API # : 077-10418-00  
 SW/4 NE/4 S24/T9S/R94W/6th PM  
 Mesa County, CO  
 Date of diagram : 1/16/2018



**Cementing details**

8-5/8" 24# J55 STC Surface Csg	Lead	Tail
Density (ppg)	12.0	12.5
Volume (sx)	168	120
Yield (cf/sx)	2.52	2.22
Top (ft RKB)	24	1024
Bottom (ft RKB)	1024	1556
Returns (full or partial)	Full	Full

4-1/2" 11.6# L-80 LTC Prod Csg	Lead	Tail
Density (ppg)	12.7	13.5
Volume (sx)	828	393
Yield (cf/sx)	1.97	1.90
Est Top (ft RKB)	1026	5810
Est Bottom (ft RKB)	5559	7838
Returns (full or partial)	Full	Full

Displacement
8.3 ppg
120 bbls

Other Remarks :	Surface- 35 bbls cement to surface bbls spacer to surface	Production-10
-----------------	--	---------------