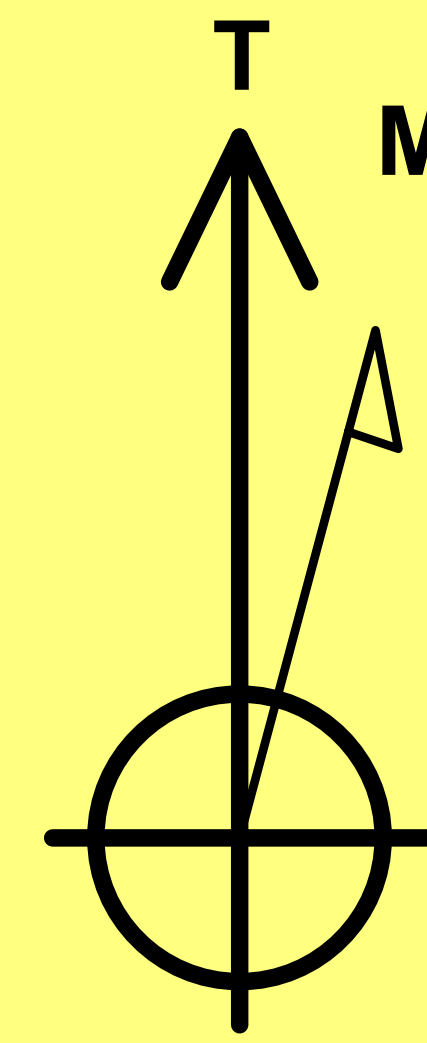


Nichols 0994-24-06W
Mesa County, CO
Q171559 & RM-171330
Design #2

Company Name: Laramie Energy, LLC
Nichols 0994-24-06W
Mesa County, CO
Rig: H&P #290
Created By: Will Jircik
Date: 12/12/2017

PROJECT DETAILS: Mesa County, CO

Geodetic System: US State Plane 1983
Datum: North American Datum 1983
Ellipsoid: GRS 1980
Zone: Colorado Central Zone
System Datum: Mean Sea Level



Azimuths to True North
Magnetic North: 9.55°

Strength: 51364.2snT
Dip Angle: 65.42°
Date: 12/4/2017
Model: IGRF2015



WELL DETAILS: Nichols 0994-24-06W

+N/-S	+E/-W	Northing	Ground Level: Easting	7137.0 Latitude	Longitude
0.0	0.0	1529726.11	2340203.50	39.264594	-107.830636

FORMATION TOP DETAILS

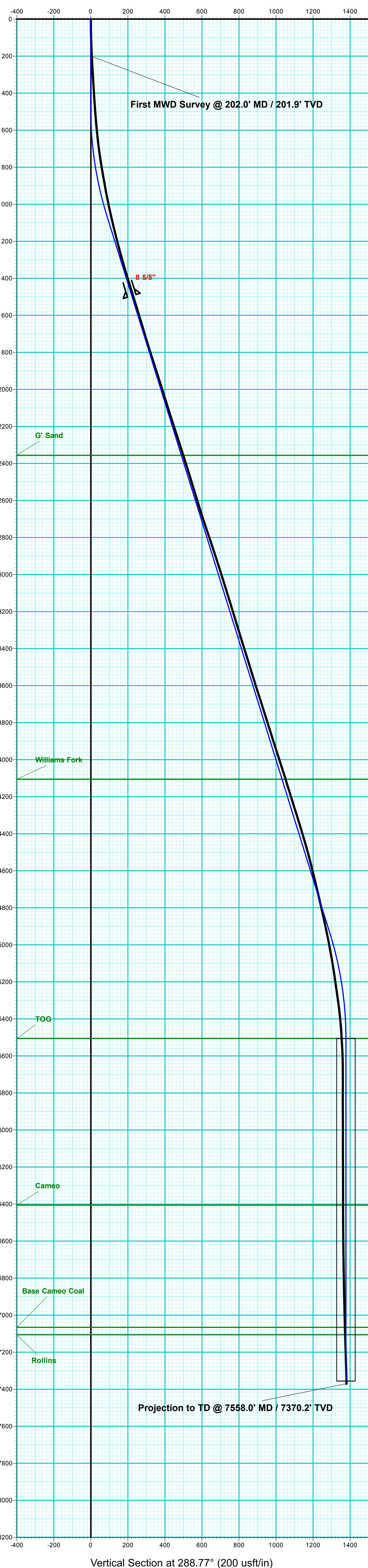
TVDPath	MDPath	Formation
2356.0	2425.8	G' Sand
4106.0	4258.4	Williams Fork
5506.0	5706.4	TOG
6406.0	6606.4	Cameo
7066.0	7266.4	Base Cameo Coal
7106.0	7306.4	Rollins

ANNOTATIONS

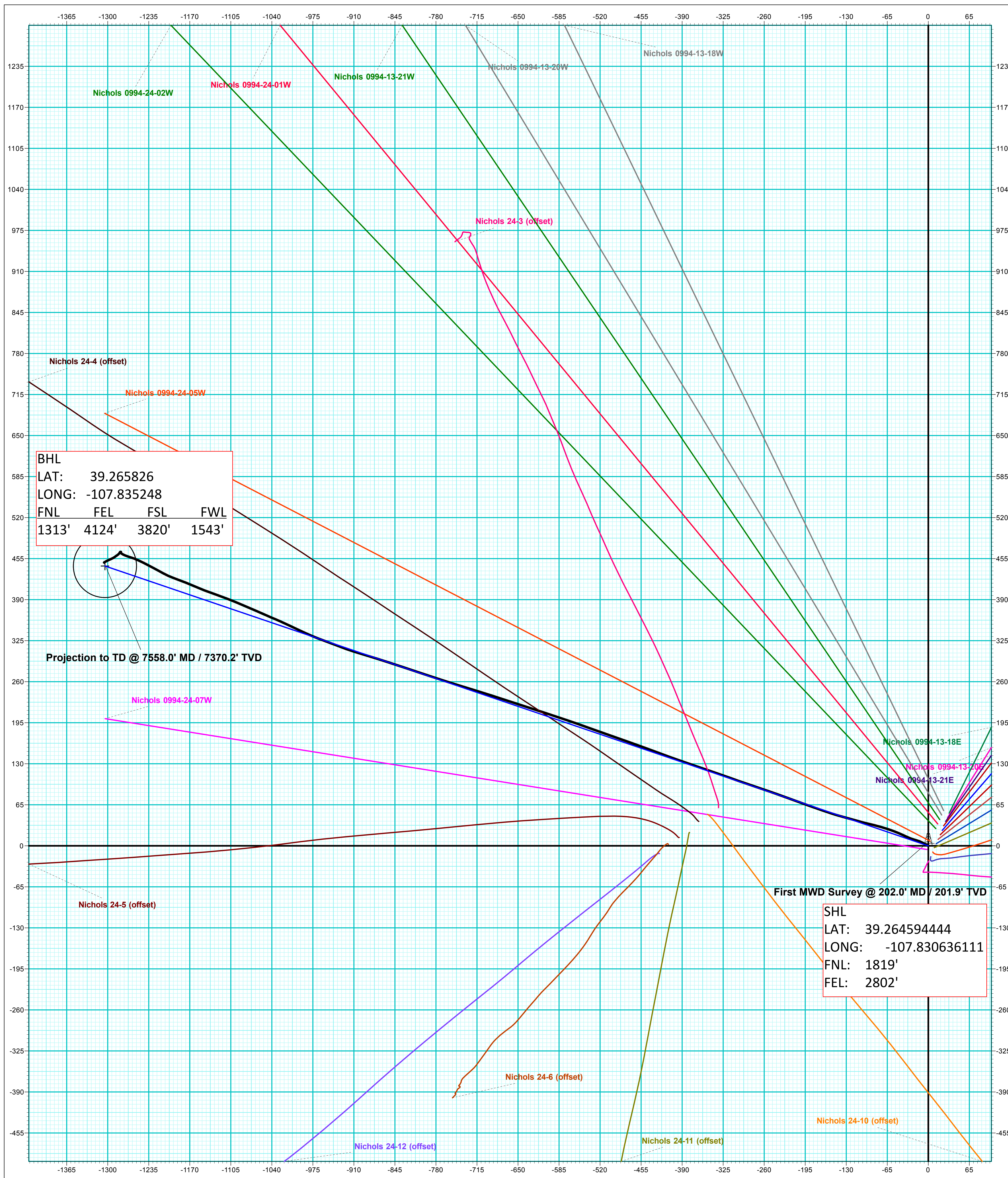
MD	Inc	Azi	TVD	+N/-S	+E/-W	VSect	Departure	Annotation
494.0	0.00	0.00	494.0	0.0	0.0	0.0	0.0	KOB (Build 3° / 100')
1069.6	17.27	288.77	1060.9	27.7	-81.5	86.1	86.1	EOB @ 17.27° Inc. / 288.77° Azm
5130.6	17.27	288.77	4939.1	415.6	-1222.9	1291.5	1291.5	Drop 3° / 100'
5706.4	0.00	0.00	5506.0	443.3	-1304.3	1377.6	1377.6	EOD @ Vertical
7556.4	0.00	0.00	7356.0	443.3	-1304.3	1377.6	1377.6	TD @ 7556.4' MD / 7356.0' TVD

DESIGN TARGET DETAILS

Name	TVD	+N/-S	+E/-W	Northing	Easting	Latitude	Longitude	Shape
PBHL - Nichols 0994-24-06W	7356.0	443.3	-1304.3	1530202.73	2338910.96	39.265811	-107.835243	Circle (Radius: 50.0)



Vertical Section at 288.77° (200 usf/in)



SHL
LAT: 39.26459444
LONG: -107.830636111
FNL: 1819'
FEL: 2802'