

Crestone Peak Resources

DJ BASIN

S18-T1N-R67W (HINGLEY)

HINGLEY 1A-18H-A167

OH

PLAN #2

Anticollision Summary Report

19 January, 2018

Cathedral Energy Services

Anticollision Summary Report

Company:	Crestone Peak Resources	Local Co-ordinate Reference:	Well HINGLEY 1A-18H-A167 - Slot Hingley 1A-18H-A167 SHL
Project:	DJ BASIN	TVD Reference:	23' KB @ 5077.00usft
Reference Site:	S18-T1N-R67W (HINGLEY)	MD Reference:	23' KB @ 5077.00usft
Site Error:	0.00 usft	North Reference:	True
Reference Well:	HINGLEY 1A-18H-A167	Survey Calculation Method:	Minimum Curvature
Well Error:	0.00 usft	Output errors are at	2.00 sigma
Reference Wellbore	OH	Database:	USA EDM 5000 Multi Users DB
Reference Design:	PLAN #2	Offset TVD Reference:	Offset Datum

Reference	PLAN #2		
Filter type:	NO GLOBAL FILTER: Using user defined selection & filtering criteria		
Interpolation Method:	Stations	Error Model:	ISCWSA
Depth Range:	Unlimited	Scan Method:	Closest Approach 3D
Results Limited by:	Maximum center-center distance of 1,000.00 usft	Error Surface:	Pedal Curve
Warning Levels Evaluated at:	2.00 Sigma	Casing Method:	Not applied

Survey Tool Program	Date	1/19/2018		
From (usft)	To (usft)	Survey (Wellbore)	Tool Name	Description
0.00	2,000.00	PLAN #2 (OH)	VESSI_GYROFLEX	VESSI Gyroflex Gyro
2,001.00	12,752.83	PLAN #2 (OH)	MWD+HDGM	OWSG MWD + HDGM

Summary						
Site Name	Reference Measured Depth (usft)	Offset Measured Depth (usft)	Distance Between Centres (usft)	Distance Between Ellipses (usft)	Separation Factor	Warning
Offset Well - Wellbore - Design						
S18-T1N-R67W (HINGLEY)						
22-24 - KAISER-FRANCIS OIL - NO SURVEYS						Out of range
B C HOPKINS 3 - FRITZLER WELL - NO SURVEYS						Out of range
B C HOPKINS 4 - FRITZLER WELL - NO SURVEYS						Out of range
BLANCHE C 4 - KPK WELL - NO SURVEYS						Out of range
BLANCHE C HOPKINS 1 - KPK WELL - NO SURVEYS						Out of range
BLANCHE C HOPKINS 2 - KPK WELL - NO SURVEYS						Out of range
DACONO 16-13 - KMG WELL - GYRO						Out of range
EMERY31-13(1-68) 1 - NOBLE WELL - NO SURVEYS						Out of range
FOREMAN 1 - KPK WELL - NO SURVEYS						Out of range
FOREMAN 2 - KPK WELL - NO SURVEYS						Out of range
FOREMAN 3 - KPK WELL - SURVEYS						Out of range
FOREMAN UNIT 4 - KPK WELL - SURVEYS						Out of range
GRAHAM ELIZABETH W 1 - KMG WELL - NO SURVEY						Out of range
GRIFFITHS 13C-20HZX - KMG STK - SURVEYS						Out of range
GRIFFITHS 13C-20HZX - KMG WELL - SURVEYS						Out of range
GRIFFITHS 14N-20HZ - KMG WELL - SURVEYS						Out of range
GRIFFITHS 34N-20HZ - KMG WELL - SURVEYS						Out of range
GRIFFITHS 35C-20HZ - KMG WELL - SURVEYS						Out of range
GRIFFITHS 35N-20HZ - KMG WELL - SURVEYS						Out of range
GRIFFITHS 36C-20HZ - KMG WELL - SURVEYS						Out of range
HALEY 41-13 #1 - KMG WELL - NO SURVEYS						Out of range
HART 7-42 - KMG WELL - NO SURVEYS						Out of range
HERBERS 31-20 - CPR WELL - GYRO						Out of range
HICKS 13-18 - KPK WELL - NO SURVEYS						Out of range
HICKS 14-18 - BAYSWATER WELL - NO SURVEYS						Out of range
HICKS 23-18 - STARLIGHT WELL - NO SURVEYS						Out of range
HICKS 24-18 - BAYSWATER WELL - NO SURVEYS						Out of range
HICKS 4-18 - CPR WELL - GYRO						Out of range
HINGLEY 1 - CPR WELL - GYRO	1,212.98	1,198.31	596.07	591.93	144.014	CC, ES
HINGLEY 1 - CPR WELL - GYRO	4,100.00	3,971.47	980.00	962.74	56.749	SF
HINGLEY 12-18 - PDC WELL - GYRO						Out of range
HINGLEY 1-B - VESSELS WELL - NO SURVEYS	4,880.60	4,718.37	676.37	649.41	25.087	CC
HINGLEY 1-B - VESSELS WELL - NO SURVEYS	5,000.00	4,833.37	677.13	649.26	24.290	ES
HINGLEY 1-B - VESSELS WELL - NO SURVEYS	5,200.00	4,910.00	691.60	662.35	23.641	SF
HINGLEY 1B-18H-A167 - OH - PLAN #2	200.00	201.00	10.00	9.51	20.610	CC, ES

CC - Min centre to center distance or convergent point, SF - min separation factor, ES - min ellipse separation

Cathedral Energy Services

Anticollision Summary Report

Company:	Crestone Peak Resources	Local Co-ordinate Reference:	Well HINGLEY 1A-18H-A167 - Slot Hingley 1A-18H-A167 SHL
Project:	DJ BASIN	TVD Reference:	23' KB @ 5077.00usft
Reference Site:	S18-T1N-R67W (HINGLEY)	MD Reference:	23' KB @ 5077.00usft
Site Error:	0.00 usft	North Reference:	True
Reference Well:	HINGLEY 1A-18H-A167	Survey Calculation Method:	Minimum Curvature
Well Error:	0.00 usft	Output errors are at	2.00 sigma
Reference Wellbore	OH	Database:	USA EDM 5000 Multi Users DB
Reference Design:	PLAN #2	Offset TVD Reference:	Offset Datum

Summary						
Site Name	Reference Measured Depth (usft)	Offset Measured Depth (usft)	Distance Between Centres (usft)	Distance Between Ellipses (usft)	Separation Factor	Warning
S18-T1N-R67W (HINGLEY)						
HINGLEY 1B-18H-A167 - OH - PLAN #2	12,752.83	12,841.87	273.98	126.30	1.855	SF
HINGLEY 1C-18H-A167 - OH - PLAN #2	200.00	201.00	20.00	19.51	41.220	CC, ES
HINGLEY 1C-18H-A167 - OH - PLAN #2	12,752.83	12,502.35	272.19	127.27	1.878	SF
HINGLEY 1D-18H-A167 - OH - PLAN #2	203.96	205.00	30.00	29.50	60.094	CC
HINGLEY 1D-18H-A167 - OH - PLAN #2	300.00	301.75	30.29	29.45	36.068	ES
HINGLEY 1D-18H-A167 - OH - PLAN #2	12,752.83	12,626.84	610.07	453.53	3.897	SF
HINGLEY 1E-18H-A167 - OH - PLAN #2	200.00	202.00	40.00	39.51	82.144	CC, ES
HINGLEY 1E-18H-A167 - OH - PLAN #2	12,752.83	12,498.72	954.85	799.86	6.161	SF
HINGLEY 1F-18H-A167 - OH - PLAN #2	200.00	202.00	50.00	49.51	102.680	CC, ES
HINGLEY 1F-18H-A167 - OH - PLAN #2	7,100.00	7,039.52	997.46	955.08	23.533	SF
HINGLEY 1G-18H-A167 - OH - PLAN #2	204.90	208.00	60.00	59.49	118.544	CC, ES
HINGLEY 1G-18H-A167 - OH - PLAN #2	6,300.00	6,230.94	991.23	955.40	27.669	SF
HINGLEY 1H-18H-A167 - OH - PLAN #2	200.00	203.00	70.00	69.51	143.239	CC, ES
HINGLEY 1H-18H-A167 - OH - PLAN #2	5,100.00	5,013.17	991.11	965.14	38.159	SF
HINGLEY 1I-18H-A167 - OH - PLAN #2	100.46	104.46	80.00	79.86	559.537	CC
HINGLEY 1I-18H-A167 - OH - PLAN #2	200.00	203.87	80.04	79.55	163.261	ES
HINGLEY 1I-18H-A167 - OH - PLAN #2	4,200.00	4,109.51	987.97	969.18	52.578	SF
HINGLEY 1J-18H-A167 - OH - PLAN #2	200.00	204.00	90.00	89.51	183.509	CC, ES
HINGLEY 1J-18H-A167 - OH - PLAN #2	700.00	703.69	138.32	136.04	60.487	SF
HINGLEY 1K-18H-A167 - OH - PLAN #2	200.00	204.00	100.00	99.51	203.899	CC, ES
HINGLEY 1K-18H-A167 - OH - PLAN #2	800.00	809.52	179.47	176.80	67.052	SF
HINGLEY 2J - PDC WELL - GYRO						Out of range
HINGLEY 2S - TEXAS TEA WELL - NO SURVEYS	200.00	200.00	166.25	165.68	295.785	CC
HINGLEY 2S - TEXAS TEA WELL - NO SURVEYS	300.00	300.02	166.64	165.68	173.097	ES
HINGLEY 2S - TEXAS TEA WELL - NO SURVEYS	4,100.00	3,975.51	994.65	976.77	55.629	SF
HINGLEY 3A-18H-N167 - OH - PLAN #1						Out of range
HINGLEY 3B-18H-N167 - OH - PLAN #1						Out of range
HINGLEY 3C-18H-N167 - OH - PLAN #1						Out of range
HINGLEY 3D-18H-N167 - OH - PLAN #1						Out of range
HINGLEY 3E-18H-N167 - OH - PLAN #1						Out of range
HINGLEY 3F-18H-N167 - OH - PLAN #1						Out of range
HINGLEY 3G-18H-N167 - OH - PLAN #1						Out of range
HINGLEY 3H-18H-N167 - OH - PLAN #1						Out of range
HINGLEY 3I-18H-N167 - OH - PLAN #1	12,749.71	8,351.45	804.87	703.69	7.955	CC
HINGLEY 3I-18H-N167 - OH - PLAN #1	12,752.83	8,346.42	804.89	703.59	7.945	ES, SF
HINGLEY 3J-18H-N167 - OH - PLAN #1	12,752.83	8,154.92	618.01	516.36	6.080	CC, ES, SF
HINGLEY 3K-18H-N167 - OH - PLAN #2	12,752.83	8,223.93	413.68	315.29	4.204	CC, ES, SF
HINGLEY 3S - TEXAS TEA WELL - NO SURVEYS						Out of range
HINGLEY 4 - DENVER EAST WELL - NO SURVEYS						Out of range
HINGLEY 5 - DENVER EAST WELL - NO SURVEYS						Out of range
HINGLEY FARMS 32-18 - CPR WELL - GYRO	10,080.46	7,717.56	660.76	606.91	12.271	CC, ES, SF
HOPKINS 3 - KPK WELL - NO SURVEYS						Out of range
HOPKINS 32-19 1 - FRITZLER RESOURCES - NO SUR						Out of range
HOPKINS 41C-19#2 - FRITZLER RESOURCES - NO SU						Out of range
HSR RMF 12-8 - KMG WELL - NO SURVEYS						Out of range
JELTS 15C-19HZ - KMG WELL - SURVEYS	12,752.83	7,500.01	802.51	731.18	11.251	CC, ES, SF
JELTS 16N-19HZ - KMG WELL - SURVEYS						Out of range
JELTS 36N-19HZ - KMG WELL - SURVEYS	12,752.83	7,415.65	770.45	717.78	14.626	CC, ES, SF
JELTS 37C-19HZ - KMG WELL - SURVEYS						Out of range
JELTS 37N-19HZ - KMG WELL - SURVEYS						Out of range
JELTS 39C-19HZ - KMG WELL - SURVEYS						Out of range
JOHNSON 21-24 - MGF OIL CORP WELL - NO SURVE						Out of range

CC - Min centre to center distance or convergent point, SF - min separation factor, ES - min ellipse separation

Cathedral Energy Services

Anticollision Summary Report

Company:	Crestone Peak Resources	Local Co-ordinate Reference:	Well HINGLEY 1A-18H-A167 - Slot Hingley 1A-18H-A167 SHL
Project:	DJ BASIN	TVD Reference:	23' KB @ 5077.00usft
Reference Site:	S18-T1N-R67W (HINGLEY)	MD Reference:	23' KB @ 5077.00usft
Site Error:	0.00 usft	North Reference:	True
Reference Well:	HINGLEY 1A-18H-A167	Survey Calculation Method:	Minimum Curvature
Well Error:	0.00 usft	Output errors are at	2.00 sigma
Reference Wellbore	OH	Database:	USA EDM 5000 Multi Users DB
Reference Design:	PLAN #2	Offset TVD Reference:	Offset Datum

Summary						
Site Name	Reference Measured Depth (usft)	Offset Measured Depth (usft)	Distance Between Centres (usft)	Distance Between Ellipses (usft)	Separation Factor	Warning
S18-T1N-R67W (HINGLEY)						
LAURIDSON 18-16 - KMG WELL - GYRO						Out of range
LAURIDSON 2-A - KPK WELL - NO SURVEYS						Out of range
LAURIDSON 31-24 - KPK WELL - NO SURVEYS						Out of range
LAURIDSON 32-24 - SRC ENERGY WELL - NO SURVEYS						Out of range
LAURIDSON 41-24 - STARLIGHT RES WELL - NO SURVEYS						Out of range
LAURIDSON 42-24 - KPK WELL - NO SURVEYS						Out of range
LAURIDSON VV 18-10 - KMG WELL - GYRO	10,949.52	7,715.56	358.66	293.31	5.488	CC, ES, SF
LAURIDSON VV18-4J - KMG WELL - GYRO	11,885.78	7,778.62	842.20	763.01	10.635	CC, ES
LAURIDSON VV18-4J - KMG WELL - GYRO	11,900.00	7,778.59	842.32	763.09	10.631	SF
LAURIDSON-A 1 - KPK WELL - NO SURVEYS						Out of range
LINKUS 32-24 - PDC WELL - NO SURVEYS						Out of range
LINKUS 41-24 - PDC WELL - GYRO						Out of range
M B SCHWAB 2 - KMG WELL - NO SURVEYS						Out of range
MARGUERITE TOTEMS U 2 - KMG WELL - GYRO						Out of range
MARK 1-A - CHAPARRAL RES - NO SURVEYS						Out of range
NRC 11-8 - KMG WELL - SURVEYS						Out of range
NRC 12-8 - KMG WELL - SURVEYS						Out of range
NRC 13-8 - KMG WELL - SURVEYS						Out of range
NRC 14-8 - KMG WELL - SURVEYS						Out of range
NRC 15-8 - KMG WELL - SURVEYS						Out of range
NRC 22-8 - KMG WELL - SURVEYS						Out of range
NRC 23-8 - KMG WELL - SURVEYS						Out of range
NRC 28N-8HZ - KMG WELL - SURVEYS						Out of range
NRC 29N-8HZ - KMG WELL - SURVEYS						Out of range
NRC 30C-8HZ - KMG WELL - SURVEYS						Out of range
NRC 35-8 - KMG WELL - SURVEYS						Out of range
NRC 3C-8HZ - KMG WELL - SURVEYS						Out of range
NRC 4C-8HZ - KMG WELL - SURVEYS						Out of range
NRC 4N-8HZ - KMG WELL - SURVEYS						Out of range
PAUL HEINZE 1 - KPK WELL - NO SURVEYS						Out of range
RALPH 13C-19HZ - KMG WELL - SURVEYS						Out of range
RALPH 14N-19HZ - KMG WELL - SURVEYS						Out of range
RALPH 34C-19HZ - KMG WELL - SURVEYS						Out of range
RALPH 35C-19HZ - KMG WELL - SURVEYS						Out of range
RALPH 35N-19HZ - KMG WELL - SURVEYS						Out of range
RALPH 36C-19HZ - KMG WELL - SURVEYS	12,752.83	7,580.00	773.84	706.89	11.558	CC, ES, SF
ROCKY MOUNTAIN FUEL 1 - KMG WELL - NO SURVEYS						Out of range
SCHWAB #1-32-13 - KMG WELL - NO SURVEYS						Out of range
STONEBRAKER 24-12 - KMG WELL - SURVEYS						Out of range
STONEBRAKER 25-12 - KMG WELL - SURVEYS						Out of range
STONEBRAKER 8-12 - KMG WELL - SURVEYS						Out of range
TROUDT 44-7 - KMG WELL - GYRO	1,715.84	1,652.29	952.84	946.81	157.791	CC
TROUDT 44-7 - KMG WELL - GYRO	1,800.00	1,736.84	952.89	946.51	149.316	ES
TROUDT 44-7 - KMG WELL - GYRO	2,900.00	2,799.65	994.55	983.61	90.936	SF
UNDERHILL 28N-17HZ - KMG WELL - SURVEYS						Out of range
UPRR 42 PAN AM 'AL' 1 - KMG WELL - GYRO						Out of range
UPRR 42 PAN AM GAS 1 - KMG WELL - NO SURVEYS						Out of range
UPRR 42 PAN AM N #2 - KPK WELL - NO SURVEYS						Out of range
UPRR 42 PAN AM N 1 - KMG WELL - GYRO						Out of range
UPRR 42 PAN AM N 4 - KPK WELL - NO SURVEYS						Out of range
UPRR 42 PAN AM-AJ 1 - KPK WELL - NO SURVEYS	5,192.70	4,920.00	622.27	593.74	21.808	CC
UPRR 42 PAN AM-AJ 1 - KPK WELL - NO SURVEYS	5,200.00	4,920.00	622.31	593.72	21.766	ES

CC - Min centre to center distance or convergent point, SF - min separation factor, ES - min ellipse separation

Cathedral Energy Services

Anticollision Summary Report

Company:	Crestone Peak Resources	Local Co-ordinate Reference:	Well HINGLEY 1A-18H-A167 - Slot Hingley 1A-18H-A167 SHL
Project:	DJ BASIN	TVD Reference:	23' KB @ 5077.00usft
Reference Site:	S18-T1N-R67W (HINGLEY)	MD Reference:	23' KB @ 5077.00usft
Site Error:	0.00 usft	North Reference:	True
Reference Well:	HINGLEY 1A-18H-A167	Survey Calculation Method:	Minimum Curvature
Well Error:	0.00 usft	Output errors are at	2.00 sigma
Reference Wellbore	OH	Database:	USA EDM 5000 Multi Users DB
Reference Design:	PLAN #2	Offset TVD Reference:	Offset Datum

Summary						
Site Name	Reference Measured Depth (usft)	Offset Measured Depth (usft)	Distance Between Centres (usft)	Distance Between Ellipses (usft)	Separation Factor	Warning
S18-T1N-R67W (HINGLEY)						
UPRR 42 PAN AM-AJ 1 - KPK WELL - NO SURVEYS	5,300.00	4,920.00	631.45	602.40	21.738	SF
UPRR 42 PAN AM-AJ 4 - KPK WELL - NO SURVEYS						Out of range
UPRR 42 PAN AM-AS 1 - KMG WELL - GYRO						Out of range
UPRR 42 PAN AM-AV 1 - KPK WELL - SURVEYS						Out of range
UPRR 42 PAN AM-J 2 - KPK WELL - NO SURVEYS						Out of range
UPRR 42 PAN AM-J 3 - KPK WELL - NO SURVEYS						Out of range
UPRR 42 PAN AM-N 3 - KPK WELL - NO SURVEYS						Out of range
UPRR 43 PAN AM 1 2 - KPK WELL - NO SURVEYS						Out of range
UPRR 43 PAN AM 1 3 - KPK WELL - NO SURVEYS						Out of range
UPRR 43 PAN AM H 10 - KPK WELL - NO SURVEYS						Out of range
UPRR 43 PAN AM H 2 - KPK WELL - NO SURVEYS						Out of range
UPRR 43 PAN AM I #5 - KPK WELL - NO SURVEYS						Out of range
UPRR 43 PAN AM M TRUE #1 - KMG WELL - GYRO						Out of range
UPRR 43 PAN AM O 1 - KMG WELL - NO SURVEYS						Out of range
UPRR 43 PAN AM-H 7 - AMOCO WELL - NO SURVEYS						Out of range
UPRR 43 PAN AM-I 14 - KPK WELL - NO SURVEYS						Out of range
UPRR 43 PAN AM-I 15 - KPK WELL - NO SURVEYS						Out of range
UPRR 43 PAN AM-I 26 - KPK WELL - NO SURVEYS						Out of range
UPRR 43 PAN AM-I 31 - KPK WELL - NO SURVEYS						Out of range
UPRR 43 PAN AM-J 1 - KMG WELL - NO SURVEYS						Out of range
UPRR PAN AM H 3 - KPK WELL - NO SURVEYS						Out of range
UPRR43PANAM-I 16 - KPK WELL - NO SURVEYS						Out of range

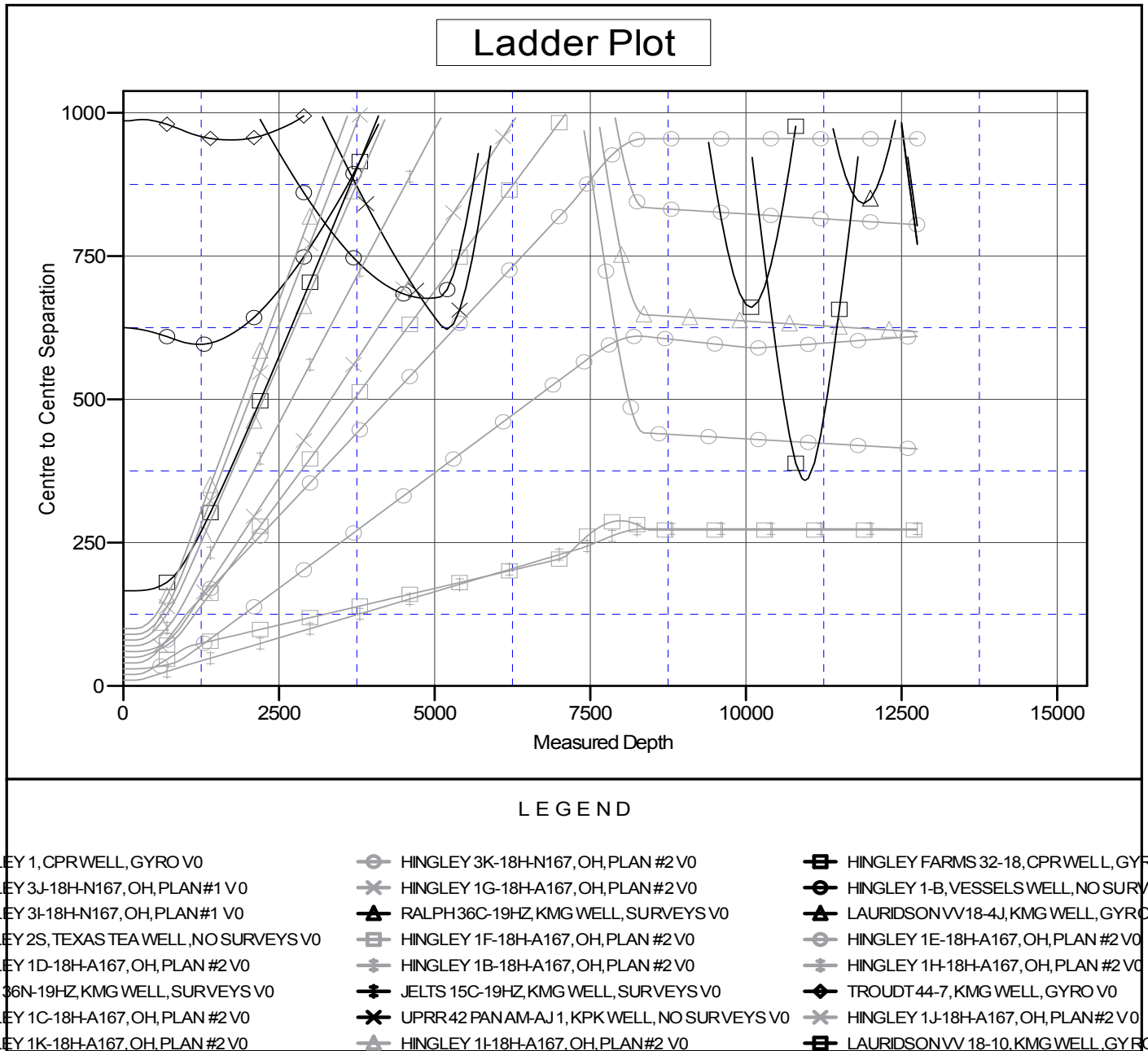
Cathedral Energy Services

Anticollision Summary Report

Company:	Crestone Peak Resources	Local Co-ordinate Reference:	Well HINGLEY 1A-18H-A167 - Slot Hingley 1A-18H-A167 SHL
Project:	DJ BASIN	TVD Reference:	23' KB @ 5077.00usft
Reference Site:	S18-T1N-R67W (HINGLEY)	MD Reference:	23' KB @ 5077.00usft
Site Error:	0.00 usft	North Reference:	True
Reference Well:	HINGLEY 1A-18H-A167	Survey Calculation Method:	Minimum Curvature
Well Error:	0.00 usft	Output errors are at	2.00 sigma
Reference Wellbore	OH	Database:	USA EDM 5000 Multi Users DB
Reference Design:	PLAN #2	Offset TVD Reference:	Offset Datum

Reference Depths are relative to 23' KB @ 5077.00usft
Offset Depths are relative to Offset Datum
Central Meridian is -105.500000

Coordinates are relative to: HINGLEY 1A-18H-A167 - Slot Hingley 1A-18H-A167 S
Coordinate System is US State Plane 1983, Colorado Northern Zone
Grid Convergence at Surface is: 0.37°



CC - Min centre to center distance or convergent point, SF - min separation factor, ES - min ellipse separation

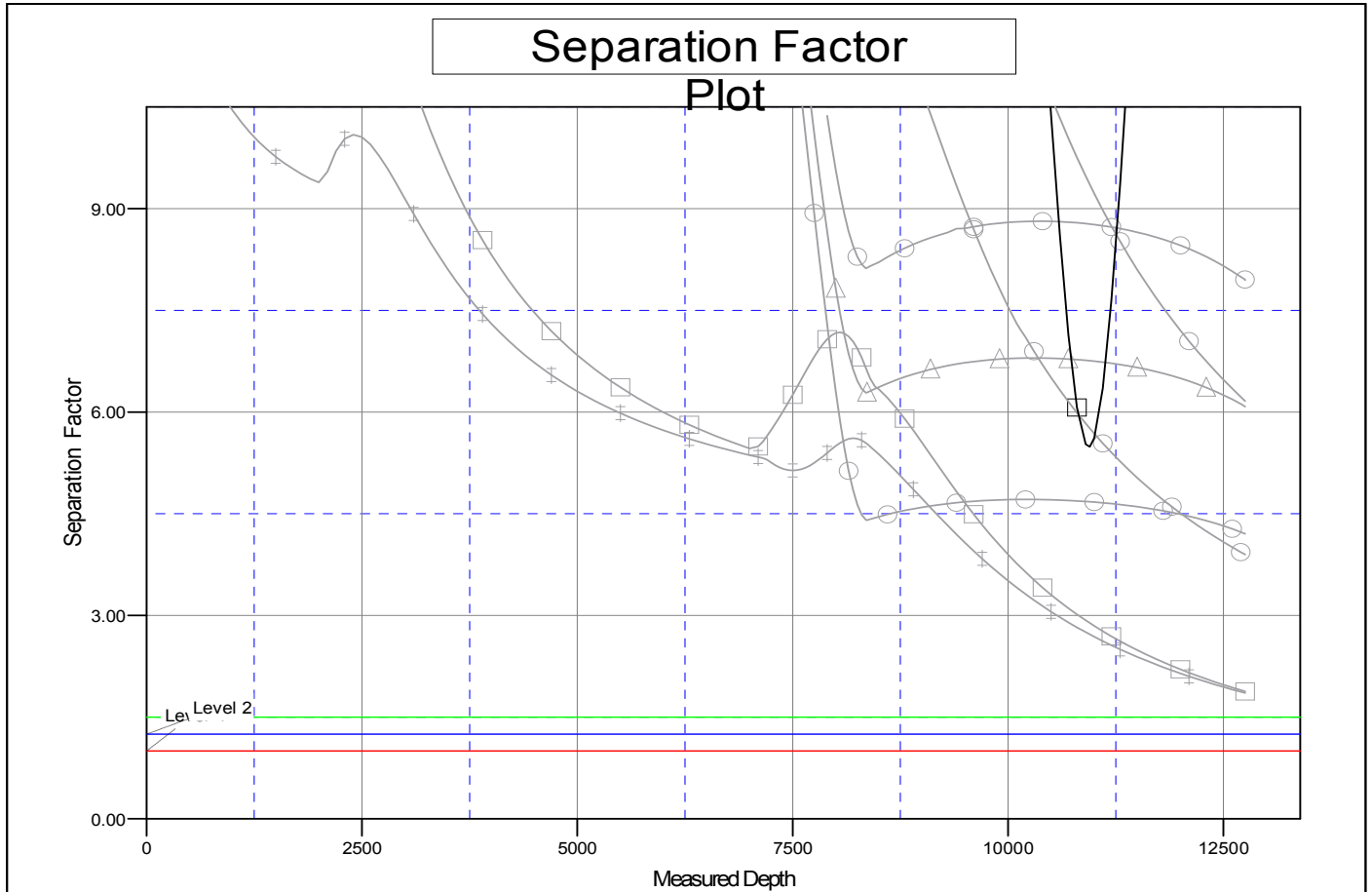
Cathedral Energy Services

Anticollision Summary Report

Company:	Crestone Peak Resources	Local Co-ordinate Reference:	Well HINGLEY 1A-18H-A167 - Slot Hingley 1A-18H-A167 SHL
Project:	DJ BASIN	TVD Reference:	23' KB @ 5077.00usft
Reference Site:	S18-T1N-R67W (HINGLEY)	MD Reference:	23' KB @ 5077.00usft
Site Error:	0.00 usft	North Reference:	True
Reference Well:	HINGLEY 1A-18H-A167	Survey Calculation Method:	Minimum Curvature
Well Error:	0.00 usft	Output errors are at	2.00 sigma
Reference Wellbore	OH	Database:	USA EDM 5000 Multi Users DB
Reference Design:	PLAN #2	Offset TVD Reference:	Offset Datum

Reference Depths are relative to 23' KB @ 5077.00usft
Offset Depths are relative to Offset Datum
Central Meridian is -105.500000

Coordinates are relative to: HINGLEY 1A-18H-A167 - Slot Hingley 1A-18H-A167 S
Coordinate System is US State Plane 1983, Colorado Northern Zone
Grid Convergence at Surface is: 0.37°



LEGEND

ILEY 1,CPRWELL,GYRO V0	HINGLEY 3K-18H-N167,OH,PLAN #2 V0	HINGLEY FARMS 32-18,CPRWELL,GYRO
ILEY 3J-18H-N167,OH,PLAN#1 V0	HINGLEY 1G-18H-A167,OH,PLAN#2 V0	HINGLEY 1-B,VESSELS WELL,NO SURVE
ILEY 3I-18H-N167,OH,PLAN#1 V0	RALPH 36C-19HZ,KMG WELL,SURVEYS V0	LAURIDSON VV18-4J,KMG WELL,GYRO
ILEY 2S,TEXAS TEA WELL,NO SURVEYS V0	HINGLEY 1F-18H-A167,OH,PLAN #2 V0	HINGLEY 1E-18H-A167,OH,PLAN #2 V0
ILEY 1D-18H-A167,OH,PLAN #2 V0	HINGLEY 1B-18H-A167,OH,PLAN #2 V0	HINGLEY 1H-18H-A167,OH,PLAN #2 V0
S 36N-19HZ,KMG WELL,SURVEYS V0	JELTS 15C-19HZ,KMG WELL,SURVEYS V0	TROUDT 44-7,KMG WELL,GYRO V0
ILEY 1C-18H-A167,OH,PLAN #2 V0	UPRR 42 PANAM-AJ 1,KPK WELL,NO SURVEYS V0	HINGLEY 1J-18H-A167,OH,PLAN#2 V0
ILEY 1K-18H-A167,OH,PLAN #2 V0	HINGLEY 1I-18H-A167,OH,PLAN#2 V0	LAURIDSON VV 18-10,KMG WELL,GYRO