

Crestone Peak Resources

DJ BASIN

S18-T1N-R67W (HINGLEY)

HINGLEY 1E-18H-A167

OH

PLAN #2

Anticollision Summary Report

19 January, 2018

Cathedral Energy Services

Anticollision Summary Report

| | | | |
|---------------------------|-------------------------|-------------------------------------|---|
| Company: | Crestone Peak Resources | Local Co-ordinate Reference: | Well HINGLEY 1E-18H-A167 - Slot Hingley 1E-18H-A167 SHL |
| Project: | DJ BASIN | TVD Reference: | 23' KB @ 5079.00usft |
| Reference Site: | S18-T1N-R67W (HINGLEY) | MD Reference: | 23' KB @ 5079.00usft |
| Site Error: | 0.00 usft | North Reference: | True |
| Reference Well: | HINGLEY 1E-18H-A167 | Survey Calculation Method: | Minimum Curvature |
| Well Error: | 0.00 usft | Output errors are at | 2.00 sigma |
| Reference Wellbore | OH | Database: | USA EDM 5000 Multi Users DB |
| Reference Design: | PLAN #2 | Offset TVD Reference: | Offset Datum |

| | | | |
|-------------------------------------|---|-----------------------|---------------------|
| Reference | PLAN #2 | | |
| Filter type: | NO GLOBAL FILTER: Using user defined selection & filtering criteria | | |
| Interpolation Method: | Stations | Error Model: | ISCWSA |
| Depth Range: | Unlimited | Scan Method: | Closest Approach 3D |
| Results Limited by: | Maximum center-center distance of 1,000.00 usft | Error Surface: | Pedal Curve |
| Warning Levels Evaluated at: | 2.00 Sigma | Casing Method: | Not applied |

| | | | | |
|----------------------------|------------------|--------------------------|------------------|---------------------|
| Survey Tool Program | Date | 1/19/2018 | | |
| From (usft) | To (usft) | Survey (Wellbore) | Tool Name | Description |
| 0.00 | 2,000.00 | PLAN #2 (OH) | VESSI_GYROFLEX | VESSI Gyroflex Gyro |
| 2,001.00 | 12,501.67 | PLAN #2 (OH) | MWD+HDGM | OWSG MWD + HDGM |

| Summary | | | | | | |
|--|---------------------------------|------------------------------|---------------------------------|----------------------------------|-------------------|--------------|
| Site Name | Reference Measured Depth (usft) | Offset Measured Depth (usft) | Distance Between Centres (usft) | Distance Between Ellipses (usft) | Separation Factor | Warning |
| S18-T1N-R67W (HINGLEY) | | | | | | |
| 22-24 - KAISER-FRANCIS OIL - NO SURVEYS | | | | | | Out of range |
| B C HOPKINS 3 - FRITZLER WELL - NO SURVEYS | | | | | | Out of range |
| B C HOPKINS 4 - FRITZLER WELL - NO SURVEYS | | | | | | Out of range |
| BLANCHE C 4 - KPK WELL - NO SURVEYS | | | | | | Out of range |
| BLANCHE C HOPKINS 1 - KPK WELL - NO SURVEYS | | | | | | Out of range |
| BLANCHE C HOPKINS 2 - KPK WELL - NO SURVEYS | | | | | | Out of range |
| DACONO 16-13 - KMG WELL - GYRO | | | | | | Out of range |
| EMERY31-13(1-68) 1 - NOBLE WELL - NO SURVEYS | | | | | | Out of range |
| FOREMAN 1 - KPK WELL - NO SURVEYS | | | | | | Out of range |
| FOREMAN 2 - KPK WELL - NO SURVEYS | | | | | | Out of range |
| FOREMAN 3 - KPK WELL - SURVEYS | | | | | | Out of range |
| FOREMAN UNIT 4 - KPK WELL - SURVEYS | | | | | | Out of range |
| GRAHAM ELIZABETH W 1 - KMG WELL - NO SURVEY | | | | | | Out of range |
| GRIFFITHS 13C-20HZX - KMG STK - SURVEYS | | | | | | Out of range |
| GRIFFITHS 13C-20HZX - KMG WELL - SURVEYS | | | | | | Out of range |
| GRIFFITHS 14N-20HZ - KMG WELL - SURVEYS | | | | | | Out of range |
| GRIFFITHS 34N-20HZ - KMG WELL - SURVEYS | | | | | | Out of range |
| GRIFFITHS 35C-20HZ - KMG WELL - SURVEYS | | | | | | Out of range |
| GRIFFITHS 35N-20HZ - KMG WELL - SURVEYS | | | | | | Out of range |
| GRIFFITHS 36C-20HZ - KMG WELL - SURVEYS | | | | | | Out of range |
| HALEY 41-13 #1 - KMG WELL - NO SURVEYS | | | | | | Out of range |
| HART 7-42 - KMG WELL - NO SURVEYS | | | | | | Out of range |
| HERBERS 31-20 - CPR WELL - GYRO | | | | | | Out of range |
| HICKS 13-18 - KPK WELL - NO SURVEYS | | | | | | Out of range |
| HICKS 14-18 - BAYSWATER WELL - NO SURVEYS | | | | | | Out of range |
| HICKS 23-18 - STARLIGHT WELL - NO SURVEYS | | | | | | Out of range |
| HICKS 24-18 - BAYSWATER WELL - NO SURVEYS | | | | | | Out of range |
| HICKS 4-18 - CPR WELL - GYRO | | | | | | Out of range |
| HINGLEY 1 - CPR WELL - GYRO | 8,612.28 | 7,593.35 | 413.77 | 374.88 | 10.640 | CC, ES, SF |
| HINGLEY 12-18 - PDC WELL - GYRO | | | | | | Out of range |
| HINGLEY 1A-18H-A167 - OH - PLAN #2 | 200.00 | 198.00 | 40.00 | 39.52 | 83.339 | CC, ES |
| HINGLEY 1A-18H-A167 - OH - PLAN #2 | 12,501.67 | 12,755.81 | 954.85 | 799.77 | 6.157 | SF |
| HINGLEY 1-B - VESSELS WELL - NO SURVEYS | | | | | | Out of range |
| HINGLEY 1B-18H-A167 - OH - PLAN #2 | 300.00 | 299.00 | 30.00 | 29.17 | 36.111 | CC, ES |
| HINGLEY 1B-18H-A167 - OH - PLAN #2 | 12,501.67 | 12,844.79 | 753.35 | 605.06 | 5.080 | SF |

CC - Min centre to center distance or covergent point, SF - min separation factor, ES - min ellipse separation

Cathedral Energy Services

Anticollision Summary Report

| | | | |
|---------------------------|-------------------------|-------------------------------------|---|
| Company: | Crestone Peak Resources | Local Co-ordinate Reference: | Well HINGLEY 1E-18H-A167 - Slot Hingley 1E-18H-A167 SHL |
| Project: | DJ BASIN | TVD Reference: | 23' KB @ 5079.00usft |
| Reference Site: | S18-T1N-R67W (HINGLEY) | MD Reference: | 23' KB @ 5079.00usft |
| Site Error: | 0.00 usft | North Reference: | True |
| Reference Well: | HINGLEY 1E-18H-A167 | Survey Calculation Method: | Minimum Curvature |
| Well Error: | 0.00 usft | Output errors are at | 2.00 sigma |
| Reference Wellbore | OH | Database: | USA EDM 5000 Multi Users DB |
| Reference Design: | PLAN #2 | Offset TVD Reference: | Offset Datum |

| Summary | | | | | | |
|---|---------------------------------|------------------------------|---------------------------------|----------------------------------|-------------------|--------------|
| Site Name | Reference Measured Depth (usft) | Offset Measured Depth (usft) | Distance Between Centres (usft) | Distance Between Ellipses (usft) | Separation Factor | Warning |
| S18-T1N-R67W (HINGLEY) | | | | | | |
| HINGLEY 1C-18H-A167 - OH - PLAN #2 | 400.00 | 399.00 | 20.00 | 18.82 | 16.951 | CC, ES |
| HINGLEY 1C-18H-A167 - OH - PLAN #2 | 12,501.67 | 12,614.63 | 694.94 | 538.63 | 4.446 | SF |
| HINGLEY 1D-18H-A167 - OH - PLAN #2 | 200.00 | 199.00 | 10.00 | 9.52 | 20.759 | CC, ES |
| HINGLEY 1D-18H-A167 - OH - PLAN #2 | 12,501.67 | 12,636.00 | 352.93 | 202.57 | 2.347 | SF |
| HINGLEY 1F-18H-A167 - OH - PLAN #2 | 491.03 | 491.18 | 7.70 | 6.19 | 5.103 | CC |
| HINGLEY 1F-18H-A167 - OH - PLAN #2 | 500.00 | 500.12 | 7.73 | 6.18 | 5.007 | ES |
| HINGLEY 1F-18H-A167 - OH - PLAN #2 | 12,501.67 | 12,712.36 | 287.91 | 171.42 | 2.472 | SF |
| HINGLEY 1G-18H-A167 - OH - PLAN #2 | 450.00 | 451.32 | 16.69 | 15.33 | 12.209 | CC, ES |
| HINGLEY 1G-18H-A167 - OH - PLAN #2 | 12,501.67 | 12,557.81 | 333.27 | 180.01 | 2.174 | SF |
| HINGLEY 1H-18H-A167 - OH - PLAN #2 | 524.50 | 525.73 | 28.65 | 27.03 | 17.661 | CC, ES |
| HINGLEY 1H-18H-A167 - OH - PLAN #2 | 12,300.00 | 12,212.99 | 560.12 | 411.72 | 3.775 | SF |
| HINGLEY 1I-18H-A167 - OH - PLAN #2 | 104.97 | 106.97 | 40.00 | 39.84 | 257.687 | CC |
| HINGLEY 1I-18H-A167 - OH - PLAN #2 | 200.00 | 201.94 | 40.04 | 39.55 | 82.234 | ES |
| HINGLEY 1I-18H-A167 - OH - PLAN #2 | 12,501.67 | 12,533.06 | 984.28 | 828.19 | 6.306 | SF |
| HINGLEY 1J-18H-A167 - OH - PLAN #2 | 300.00 | 302.00 | 50.00 | 49.16 | 59.808 | CC, ES |
| HINGLEY 1J-18H-A167 - OH - PLAN #2 | 6,400.00 | 6,319.73 | 991.46 | 956.32 | 28.219 | SF |
| HINGLEY 1K-18H-A167 - OH - PLAN #2 | 200.00 | 202.00 | 60.00 | 59.51 | 123.217 | CC, ES |
| HINGLEY 1K-18H-A167 - OH - PLAN #2 | 5,900.00 | 5,813.06 | 992.66 | 961.33 | 31.682 | SF |
| HINGLEY 2J - PDC WELL - GYRO | | | | | | Out of range |
| HINGLEY 2S - TEXAS TEA WELL - NO SURVEYS | 600.00 | 602.00 | 179.69 | 177.51 | 82.644 | CC, ES |
| HINGLEY 2S - TEXAS TEA WELL - NO SURVEYS | 5,000.00 | 4,881.00 | 824.01 | 801.28 | 36.262 | SF |
| HINGLEY 3A-18H-N167 - OH - PLAN #1 | | | | | | Out of range |
| HINGLEY 3B-18H-N167 - OH - PLAN #1 | | | | | | Out of range |
| HINGLEY 3C-18H-N167 - OH - PLAN #1 | | | | | | Out of range |
| HINGLEY 3D-18H-N167 - OH - PLAN #1 | | | | | | Out of range |
| HINGLEY 3E-18H-N167 - OH - PLAN #1 | | | | | | Out of range |
| HINGLEY 3F-18H-N167 - OH - PLAN #1 | | | | | | Out of range |
| HINGLEY 3G-18H-N167 - OH - PLAN #1 | | | | | | Out of range |
| HINGLEY 3H-18H-N167 - OH - PLAN #1 | | | | | | Out of range |
| HINGLEY 3I-18H-N167 - OH - PLAN #1 | | | | | | Out of range |
| HINGLEY 3J-18H-N167 - OH - PLAN #1 | | | | | | Out of range |
| HINGLEY 3K-18H-N167 - OH - PLAN #2 | | | | | | Out of range |
| HINGLEY 3S - TEXAS TEA WELL - NO SURVEYS | | | | | | Out of range |
| HINGLEY 4 - DENVER EAST WELL - NO SURVEYS | | | | | | Out of range |
| HINGLEY 5 - DENVER EAST WELL - NO SURVEYS | | | | | | Out of range |
| HINGLEY FARMS 32-18 - CPR WELL - GYRO | 9,830.05 | 7,617.80 | 288.63 | 236.02 | 5.486 | CC, ES, SF |
| HOPKINS 3 - KPK WELL - NO SURVEYS | | | | | | Out of range |
| HOPKINS 32-19 1 - FRITZLER RESOURCES - NO SUR | | | | | | Out of range |
| HOPKINS 41C-19#2 - FRITZLER RESOURCES - NO SU | | | | | | Out of range |
| HSR RMF 12-8 - KMG WELL - NO SURVEYS | | | | | | Out of range |
| JELTS 15C-19HZ - KMG WELL - SURVEYS | 12,501.67 | 7,458.95 | 825.94 | 758.17 | 12.187 | CC, ES, SF |
| JELTS 16N-19HZ - KMG WELL - SURVEYS | | | | | | Out of range |
| JELTS 36N-19HZ - KMG WELL - SURVEYS | | | | | | Out of range |
| JELTS 37C-19HZ - KMG WELL - SURVEYS | 12,501.67 | 7,501.67 | 740.51 | 675.73 | 11.431 | CC, ES, SF |
| JELTS 37N-19HZ - KMG WELL - SURVEYS | 12,501.67 | 7,339.00 | 750.60 | 706.96 | 17.199 | CC, ES, SF |
| JELTS 39C-19HZ - KMG WELL - SURVEYS | | | | | | Out of range |
| JOHNSON 21-24 - MGF OIL CORP WELL - NO SURVE | | | | | | Out of range |
| LAURIDSON 18-16 - KMG WELL - GYRO | 12,216.27 | 7,677.90 | 719.58 | 632.51 | 8.264 | CC, ES, SF |
| LAURIDSON 2-A - KPK WELL - NO SURVEYS | | | | | | Out of range |
| LAURIDSON 31-24 - KPK WELL - NO SURVEYS | | | | | | Out of range |
| LAURIDSON 32-24 - SRC ENERGY WELL - NO SURVE | | | | | | Out of range |
| LAURIDSON 41-24 - STARLIGHT RES WELL - NO SUR | | | | | | Out of range |

CC - Min centre to center distance or convergent point, SF - min separation factor, ES - min ellipse separation

Cathedral Energy Services

Anticollision Summary Report

| | | | |
|---------------------------|-------------------------|-------------------------------------|---|
| Company: | Crestone Peak Resources | Local Co-ordinate Reference: | Well HINGLEY 1E-18H-A167 - Slot Hingley 1E-18H-A167 SHL |
| Project: | DJ BASIN | TVD Reference: | 23' KB @ 5079.00usft |
| Reference Site: | S18-T1N-R67W (HINGLEY) | MD Reference: | 23' KB @ 5079.00usft |
| Site Error: | 0.00 usft | North Reference: | True |
| Reference Well: | HINGLEY 1E-18H-A167 | Survey Calculation Method: | Minimum Curvature |
| Well Error: | 0.00 usft | Output errors are at | 2.00 sigma |
| Reference Wellbore | OH | Database: | USA EDM 5000 Multi Users DB |
| Reference Design: | PLAN #2 | Offset TVD Reference: | Offset Datum |

| Summary | | | | | | |
|---|---------------------------------|------------------------------|---------------------------------|----------------------------------|-------------------|---------------------|
| Site Name | Reference Measured Depth (usft) | Offset Measured Depth (usft) | Distance Between Centres (usft) | Distance Between Ellipses (usft) | Separation Factor | Warning |
| S18-T1N-R67W (HINGLEY) | | | | | | |
| LAURIDSON 42-24 - KPK WELL - NO SURVEYS | | | | | | Out of range |
| LAURIDSON VV 18-10 - KMG WELL - GYRO | 10,695.32 | 7,648.38 | 593.77 | 529.34 | 9.215 | CC |
| LAURIDSON VV 18-10 - KMG WELL - GYRO | 10,700.00 | 7,648.37 | 593.79 | 529.25 | 9.200 | ES |
| LAURIDSON VV 18-10 - KMG WELL - GYRO | 10,800.00 | 7,648.12 | 602.93 | 536.80 | 9.118 | SF |
| LAURIDSON VV18-4J - KMG WELL - GYRO | 11,632.15 | 7,677.94 | 107.53 | 29.22 | 1.373 | Level 3, CC, ES, SF |
| LAURIDSON-A 1 - KPK WELL - NO SURVEYS | | | | | | Out of range |
| LINKUS 32-24 - PDC WELL - NO SURVEYS | | | | | | Out of range |
| LINKUS 41-24 - PDC WELL - GYRO | | | | | | Out of range |
| M B SCHWAB 2 - KMG WELL - NO SURVEYS | | | | | | Out of range |
| MARGUERITE TOTEMS U 2 - KMG WELL - GYRO | | | | | | Out of range |
| MARK 1-A - CHAPARRAL RES - NO SURVEYS | | | | | | Out of range |
| NRC 11-8 - KMG WELL - SURVEYS | | | | | | Out of range |
| NRC 12-8 - KMG WELL - SURVEYS | | | | | | Out of range |
| NRC 13-8 - KMG WELL - SURVEYS | | | | | | Out of range |
| NRC 14-8 - KMG WELL - SURVEYS | | | | | | Out of range |
| NRC 15-8 - KMG WELL - SURVEYS | | | | | | Out of range |
| NRC 22-8 - KMG WELL - SURVEYS | | | | | | Out of range |
| NRC 23-8 - KMG WELL - SURVEYS | | | | | | Out of range |
| NRC 28N-8HZ - KMG WELL - SURVEYS | | | | | | Out of range |
| NRC 29N-8HZ - KMG WELL - SURVEYS | | | | | | Out of range |
| NRC 30C-8HZ - KMG WELL - SURVEYS | | | | | | Out of range |
| NRC 35-8 - KMG WELL - SURVEYS | | | | | | Out of range |
| NRC 3C-8HZ - KMG WELL - SURVEYS | | | | | | Out of range |
| NRC 4C-8HZ - KMG WELL - SURVEYS | | | | | | Out of range |
| NRC 4N-8HZ - KMG WELL - SURVEYS | | | | | | Out of range |
| PAUL HEINZE 1 - KPK WELL - NO SURVEYS | | | | | | Out of range |
| RALPH 13C-19HZ - KMG WELL - SURVEYS | | | | | | Out of range |
| RALPH 14N-19HZ - KMG WELL - SURVEYS | | | | | | Out of range |
| RALPH 34C-19HZ - KMG WELL - SURVEYS | | | | | | Out of range |
| RALPH 35C-19HZ - KMG WELL - SURVEYS | | | | | | Out of range |
| RALPH 35N-19HZ - KMG WELL - SURVEYS | | | | | | Out of range |
| RALPH 36C-19HZ - KMG WELL - SURVEYS | | | | | | Out of range |
| ROCKY MOUNTAIN FUEL 1 - KMG WELL - NO SURVEYS | | | | | | Out of range |
| SCHWAB #1-32-13 - KMG WELL - NO SURVEYS | | | | | | Out of range |
| STONEBRAKER 24-12 - KMG WELL - SURVEYS | | | | | | Out of range |
| STONEBRAKER 25-12 - KMG WELL - SURVEYS | | | | | | Out of range |
| STONEBRAKER 8-12 - KMG WELL - SURVEYS | | | | | | Out of range |
| TROUDT 44-7 - KMG WELL - GYRO | 4,596.68 | 4,510.30 | 728.29 | 708.63 | 37.027 | CC |
| TROUDT 44-7 - KMG WELL - GYRO | 4,700.00 | 4,609.46 | 728.63 | 708.36 | 35.932 | ES |
| TROUDT 44-7 - KMG WELL - GYRO | 6,950.00 | 6,804.65 | 864.41 | 831.40 | 26.188 | SF |
| UNDERHILL 28N-17HZ - KMG WELL - SURVEYS | | | | | | Out of range |
| UPRR 42 PAN AM 'AL' 1 - KMG WELL - GYRO | | | | | | Out of range |
| UPRR 42 PAN AM GAS 1 - KMG WELL - NO SURVEYS | | | | | | Out of range |
| UPRR 42 PAN AM N #2 - KPK WELL - NO SURVEYS | | | | | | Out of range |
| UPRR 42 PAN AM N 1 - KMG WELL - GYRO | | | | | | Out of range |
| UPRR 42 PAN AM N 4 - KPK WELL - NO SURVEYS | | | | | | Out of range |
| UPRR 42 PAN AM-AJ 1 - KPK WELL - NO SURVEYS | 5,176.84 | 4,920.00 | 893.66 | 869.89 | 37.583 | CC, ES |
| UPRR 42 PAN AM-AJ 1 - KPK WELL - NO SURVEYS | 5,300.00 | 4,920.00 | 902.11 | 877.87 | 37.220 | SF |
| UPRR 42 PAN AM-AJ 4 - KPK WELL - NO SURVEYS | | | | | | Out of range |
| UPRR 42 PAN AM-AS 1 - KMG WELL - GYRO | | | | | | Out of range |
| UPRR 42 PAN AM-AV 1 - KPK WELL - SURVEYS | | | | | | Out of range |
| UPRR 42 PAN AM-J 2 - KPK WELL - NO SURVEYS | | | | | | Out of range |

CC - Min centre to center distance or convergent point, SF - min separation factor, ES - min ellipse separation

Cathedral Energy Services

Anticollision Summary Report

| | | | |
|---------------------------|-------------------------|-------------------------------------|---|
| Company: | Crestone Peak Resources | Local Co-ordinate Reference: | Well HINGLEY 1E-18H-A167 - Slot Hingley 1E-18H-A167 SHL |
| Project: | DJ BASIN | TVD Reference: | 23' KB @ 5079.00usft |
| Reference Site: | S18-T1N-R67W (HINGLEY) | MD Reference: | 23' KB @ 5079.00usft |
| Site Error: | 0.00 usft | North Reference: | True |
| Reference Well: | HINGLEY 1E-18H-A167 | Survey Calculation Method: | Minimum Curvature |
| Well Error: | 0.00 usft | Output errors are at | 2.00 sigma |
| Reference Wellbore | OH | Database: | USA EDM 5000 Multi Users DB |
| Reference Design: | PLAN #2 | Offset TVD Reference: | Offset Datum |

| Summary | | | | | | |
|--|---------------------------------|------------------------------|---------------------------------|----------------------------------|-------------------|--------------|
| Site Name | Reference Measured Depth (usft) | Offset Measured Depth (usft) | Distance Between Centres (usft) | Distance Between Ellipses (usft) | Separation Factor | Warning |
| Offset Well - Wellbore - Design | | | | | | |
| S18-T1N-R67W (HINGLEY) | | | | | | |
| UPRR 42 PAN AM-J 3 - KPK WELL - NO SURVEYS | | | | | | Out of range |
| UPRR 42 PAN AM-N 3 - KPK WELL - NO SURVEYS | | | | | | Out of range |
| UPRR 43 PAN AM 1 2 - KPK WELL - NO SURVEYS | | | | | | Out of range |
| UPRR 43 PAN AM 1 3 - KPK WELL - NO SURVEYS | | | | | | Out of range |
| UPRR 43 PAN AM H 10 - KPK WELL - NO SURVEYS | | | | | | Out of range |
| UPRR 43 PAN AM H 2 - KPK WELL - NO SURVEYS | | | | | | Out of range |
| UPRR 43 PAN AM I #5 - KPK WELL - NO SURVEYS | | | | | | Out of range |
| UPRR 43 PAN AM M TRUE #1 - KMG WELL - GYRO | | | | | | Out of range |
| UPRR 43 PAN AM O 1 - KMG WELL - NO SURVEYS | | | | | | Out of range |
| UPRR 43 PAN AM-H 7 - AMOCO WELL - NO SURVEYS | | | | | | Out of range |
| UPRR 43 PAN AM-I 14 - KPK WELL - NO SURVEYS | | | | | | Out of range |
| UPRR 43 PAN AM-I 15 - KPK WELL - NO SURVEYS | | | | | | Out of range |
| UPRR 43 PAN AM-I 26 - KPK WELL - NO SURVEYS | | | | | | Out of range |
| UPRR 43 PAN AM-I 31 - KPK WELL - NO SURVEYS | | | | | | Out of range |
| UPRR 43 PAN AM-J 1 - KMG WELL - NO SURVEYS | | | | | | Out of range |
| UPRR PAN AM H 3 - KPK WELL - NO SURVEYS | | | | | | Out of range |
| UPRR43PANAM-I 16 - KPK WELL - NO SURVEYS | | | | | | Out of range |

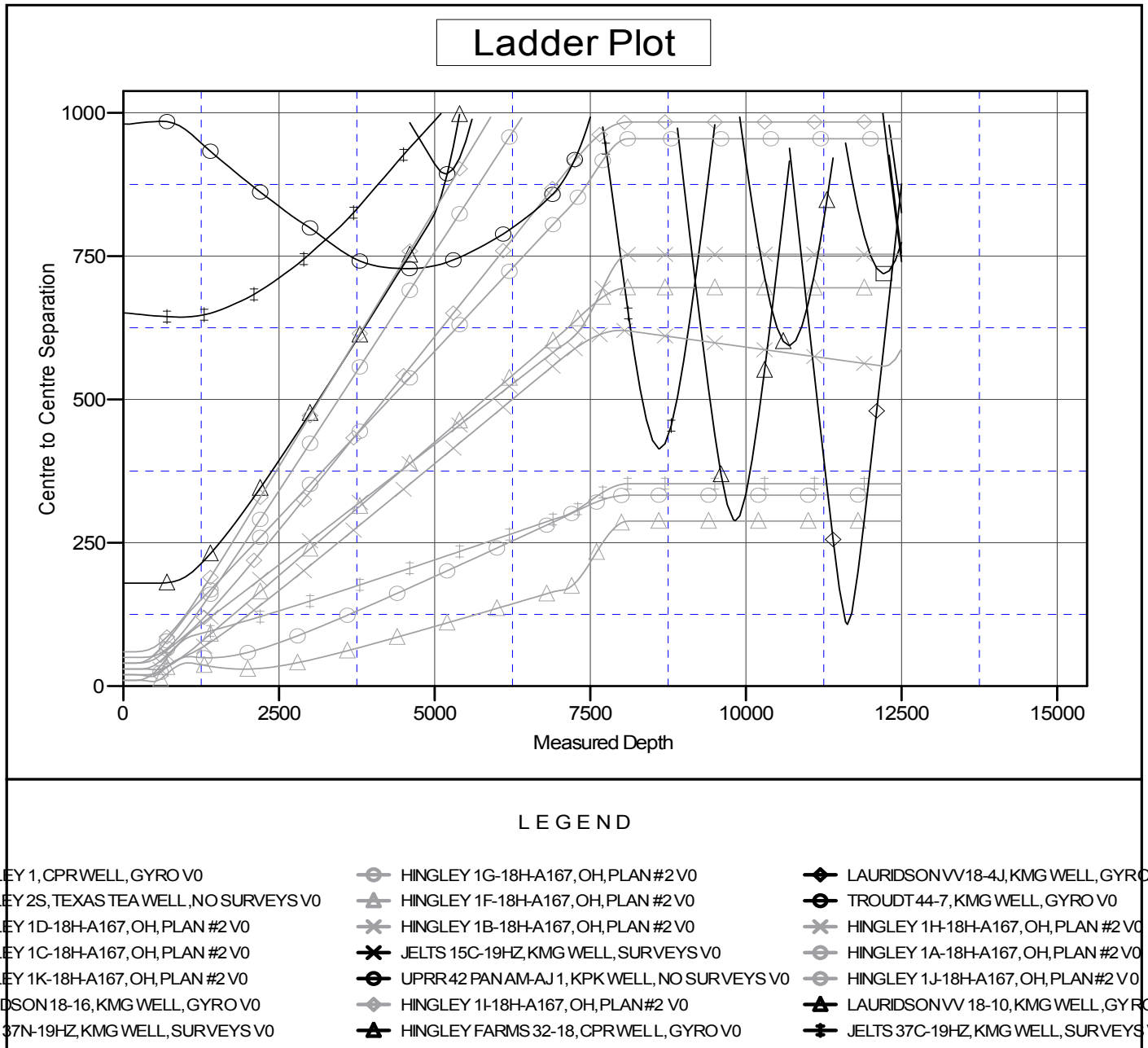
Cathedral Energy Services

Anticollision Summary Report

| | | | |
|---------------------------|-------------------------|-------------------------------------|---|
| Company: | Crestone Peak Resources | Local Co-ordinate Reference: | Well HINGLEY 1E-18H-A167 - Slot Hingley 1E-18H-A167 SHL |
| Project: | DJ BASIN | TVD Reference: | 23' KB @ 5079.00usft |
| Reference Site: | S18-T1N-R67W (HINGLEY) | MD Reference: | 23' KB @ 5079.00usft |
| Site Error: | 0.00 usft | North Reference: | True |
| Reference Well: | HINGLEY 1E-18H-A167 | Survey Calculation Method: | Minimum Curvature |
| Well Error: | 0.00 usft | Output errors are at | 2.00 sigma |
| Reference Wellbore | OH | Database: | USA EDM 5000 Multi Users DB |
| Reference Design: | PLAN #2 | Offset TVD Reference: | Offset Datum |

Reference Depths are relative to 23' KB @ 5079.00usft
Offset Depths are relative to Offset Datum
Central Meridian is -105.500000

Coordinates are relative to: HINGLEY 1E-18H-A167 - Slot Hingley 1E-18H-A167 S
Coordinate System is US State Plane 1983, Colorado Northern Zone
Grid Convergence at Surface is: 0.37°



CC - Min centre to center distance or convergent point, SF - min separation factor, ES - min ellipse separation

Cathedral Energy Services

Anticollision Summary Report

| | | | |
|---------------------------|-------------------------|-------------------------------------|---|
| Company: | Crestone Peak Resources | Local Co-ordinate Reference: | Well HINGLEY 1E-18H-A167 - Slot Hingley 1E-18H-A167 SHL |
| Project: | DJ BASIN | TVD Reference: | 23' KB @ 5079.00usft |
| Reference Site: | S18-T1N-R67W (HINGLEY) | MD Reference: | 23' KB @ 5079.00usft |
| Site Error: | 0.00 usft | North Reference: | True |
| Reference Well: | HINGLEY 1E-18H-A167 | Survey Calculation Method: | Minimum Curvature |
| Well Error: | 0.00 usft | Output errors are at | 2.00 sigma |
| Reference Wellbore | OH | Database: | USA EDM 5000 Multi Users DB |
| Reference Design: | PLAN #2 | Offset TVD Reference: | Offset Datum |

Reference Depths are relative to 23' KB @ 5079.00usft
Offset Depths are relative to Offset Datum
Central Meridian is -105.500000

Coordinates are relative to: HINGLEY 1E-18H-A167 - Slot Hingley 1E-18H-A167 S
Coordinate System is US State Plane 1983, Colorado Northern Zone
Grid Convergence at Surface is: 0.37°

