

# **Crestone Peak Resources**

**DJ BASIN**

**S18-T1N-R67W (HINGLEY)**

**HINGLEY 1C-18H-A167**

**OH**

**PLAN #2**

## **Anticollision Summary Report**

**19 January, 2018**

# Cathedral Energy Services

## Anticollision Summary Report

<b>Company:</b>	Crestone Peak Resources	<b>Local Co-ordinate Reference:</b>	Well HINGLEY 1C-18H-A167 - Slot Hingley 1C-18H-A167 SHL
<b>Project:</b>	DJ BASIN	<b>TVD Reference:</b>	23' KB @ 5078.00usft
<b>Reference Site:</b>	S18-T1N-R67W (HINGLEY)	<b>MD Reference:</b>	23' KB @ 5078.00usft
<b>Site Error:</b>	0.00 usft	<b>North Reference:</b>	True
<b>Reference Well:</b>	HINGLEY 1C-18H-A167	<b>Survey Calculation Method:</b>	Minimum Curvature
<b>Well Error:</b>	0.00 usft	<b>Output errors are at</b>	2.00 sigma
<b>Reference Wellbore</b>	OH	<b>Database:</b>	USA EDM 5000 Multi Users DB
<b>Reference Design:</b>	PLAN #2	<b>Offset TVD Reference:</b>	Offset Datum

<b>Reference</b>	PLAN #2		
<b>Filter type:</b>	NO GLOBAL FILTER: Using user defined selection & filtering criteria		
<b>Interpolation Method:</b>	Stations	<b>Error Model:</b>	ISCWSA
<b>Depth Range:</b>	Unlimited	<b>Scan Method:</b>	Closest Approach 3D
<b>Results Limited by:</b>	Maximum center-center distance of 1,000.00 usft	<b>Error Surface:</b>	Pedal Curve
<b>Warning Levels Evaluated at:</b>	2.00 Sigma	<b>Casing Method:</b>	Not applied

<b>Survey Tool Program</b>	<b>Date</b>	1/19/2018		
<b>From (usft)</b>	<b>To (usft)</b>	<b>Survey (Wellbore)</b>	<b>Tool Name</b>	<b>Description</b>
0.00	2,000.00	PLAN #2 (OH)	VESSI_GYROFLEX	VESSI Gyroflex Gyro
2,001.00	12,503.11	PLAN #2 (OH)	MWD+HDGM	OWSG MWD + HDGM

Summary						
Site Name	Reference Measured Depth (usft)	Offset Measured Depth (usft)	Distance Between Centres (usft)	Distance Between Ellipses (usft)	Separation Factor	Warning
S18-T1N-R67W (HINGLEY)						
22-24 - KAISER-FRANCIS OIL - NO SURVEYS						Out of range
B C HOPKINS 3 - FRITZLER WELL - NO SURVEYS						Out of range
B C HOPKINS 4 - FRITZLER WELL - NO SURVEYS						Out of range
BLANCHE C 4 - KPK WELL - NO SURVEYS						Out of range
BLANCHE C HOPKINS 1 - KPK WELL - NO SURVEYS						Out of range
BLANCHE C HOPKINS 2 - KPK WELL - NO SURVEYS						Out of range
DACONO 16-13 - KMG WELL - GYRO						Out of range
EMERY31-13(1-68) 1 - NOBLE WELL - NO SURVEYS						Out of range
FOREMAN 1 - KPK WELL - NO SURVEYS						Out of range
FOREMAN 2 - KPK WELL - NO SURVEYS						Out of range
FOREMAN 3 - KPK WELL - SURVEYS						Out of range
FOREMAN UNIT 4 - KPK WELL - SURVEYS						Out of range
GRAHAM ELIZABETH W 1 - KMG WELL - NO SURVEY						Out of range
GRIFFITHS 13C-20HZX - KMG STK - SURVEYS						Out of range
GRIFFITHS 13C-20HZX - KMG WELL - SURVEYS						Out of range
GRIFFITHS 14N-20HZ - KMG WELL - SURVEYS						Out of range
GRIFFITHS 34N-20HZ - KMG WELL - SURVEYS						Out of range
GRIFFITHS 35C-20HZ - KMG WELL - SURVEYS						Out of range
GRIFFITHS 35N-20HZ - KMG WELL - SURVEYS						Out of range
GRIFFITHS 36C-20HZ - KMG WELL - SURVEYS						Out of range
HALEY 41-13 #1 - KMG WELL - NO SURVEYS						Out of range
HART 7-42 - KMG WELL - NO SURVEYS						Out of range
HERBERS 31-20 - CPR WELL - GYRO						Out of range
HICKS 13-18 - KPK WELL - NO SURVEYS						Out of range
HICKS 14-18 - BAYSWATER WELL - NO SURVEYS						Out of range
HICKS 23-18 - STARLIGHT WELL - NO SURVEYS						Out of range
HICKS 24-18 - BAYSWATER WELL - NO SURVEYS						Out of range
HICKS 4-18 - CPR WELL - GYRO						Out of range
HINGLEY 1 - CPR WELL - GYRO	1,452.13	1,432.72	603.34	598.38	121.733	CC
HINGLEY 1 - CPR WELL - GYRO	1,500.00	1,479.31	603.44	598.31	117.633	ES
HINGLEY 1 - CPR WELL - GYRO	4,700.00	4,598.53	986.13	965.61	48.057	SF
HINGLEY 12-18 - PDC WELL - GYRO						Out of range
HINGLEY 1A-18H-A167 - OH - PLAN #2	200.00	199.00	20.00	19.52	41.519	CC, ES
HINGLEY 1A-18H-A167 - OH - PLAN #2	12,503.11	12,753.59	272.19	127.25	1.878	SF
HINGLEY 1-B - VESSELS WELL - NO SURVEYS	5,076.12	4,910.00	698.29	671.00	25.587	CC, ES

CC - Min centre to center distance or convergent point, SF - min separation factor, ES - min ellipse separation

# Cathedral Energy Services

## Anticollision Summary Report

<b>Company:</b>	Crestone Peak Resources	<b>Local Co-ordinate Reference:</b>	Well HINGLEY 1C-18H-A167 - Slot Hingley 1C-18H-A167 SHL
<b>Project:</b>	DJ BASIN	<b>TVD Reference:</b>	23' KB @ 5078.00usft
<b>Reference Site:</b>	S18-T1N-R67W (HINGLEY)	<b>MD Reference:</b>	23' KB @ 5078.00usft
<b>Site Error:</b>	0.00 usft	<b>North Reference:</b>	True
<b>Reference Well:</b>	HINGLEY 1C-18H-A167	<b>Survey Calculation Method:</b>	Minimum Curvature
<b>Well Error:</b>	0.00 usft	<b>Output errors are at</b>	2.00 sigma
<b>Reference Wellbore</b>	OH	<b>Database:</b>	USA EDM 5000 Multi Users DB
<b>Reference Design:</b>	PLAN #2	<b>Offset TVD Reference:</b>	Offset Datum

Summary						
Site Name	Reference Measured Depth (usft)	Offset Measured Depth (usft)	Distance Between Centres (usft)	Distance Between Ellipses (usft)	Separation Factor	Warning
S18-T1N-R67W (HINGLEY)						
HINGLEY 1-B - VESSELS WELL - NO SURVEYS	5,200.00	4,910.00	709.19	681.15	25.287	SF
HINGLEY 1B-18H-A167 - OH - PLAN #2	300.00	300.00	10.00	9.17	12.012	CC, ES
HINGLEY 1B-18H-A167 - OH - PLAN #2	7,000.00	7,005.57	75.71	23.28	1.444	Level 3, SF
HINGLEY 1D-18H-A167 - OH - PLAN #2	401.56	401.73	7.03	5.83	5.869	CC, ES
HINGLEY 1D-18H-A167 - OH - PLAN #2	12,503.11	12,629.62	367.24	213.15	2.383	SF
HINGLEY 1E-18H-A167 - OH - PLAN #2	400.00	401.00	20.00	18.82	16.901	CC, ES
HINGLEY 1E-18H-A167 - OH - PLAN #2	12,503.11	12,499.47	694.94	539.78	4.479	SF
HINGLEY 1F-18H-A167 - OH - PLAN #2	538.44	540.68	27.31	25.64	16.304	CC, ES
HINGLEY 1F-18H-A167 - OH - PLAN #2	12,503.11	12,710.15	891.39	737.70	5.800	SF
HINGLEY 1G-18H-A167 - OH - PLAN #2	497.13	500.47	35.08	33.55	22.865	CC
HINGLEY 1G-18H-A167 - OH - PLAN #2	500.00	503.34	35.08	33.54	22.716	ES
HINGLEY 1G-18H-A167 - OH - PLAN #2	700.00	702.81	41.87	39.60	18.510	SF
HINGLEY 1H-18H-A167 - OH - PLAN #2	438.00	440.63	49.31	47.99	37.348	CC, ES
HINGLEY 1H-18H-A167 - OH - PLAN #2	800.00	801.96	68.30	65.69	26.211	SF
HINGLEY 1I-18H-A167 - OH - PLAN #2	102.51	105.51	60.00	59.85	404.337	CC
HINGLEY 1I-18H-A167 - OH - PLAN #2	200.00	202.90	60.04	59.55	122.889	ES
HINGLEY 1I-18H-A167 - OH - PLAN #2	800.00	801.32	99.69	97.07	37.968	SF
HINGLEY 1J-18H-A167 - OH - PLAN #2	300.00	303.00	70.00	69.16	83.556	CC, ES
HINGLEY 1J-18H-A167 - OH - PLAN #2	700.00	702.30	95.13	92.87	42.049	SF
HINGLEY 1K-18H-A167 - OH - PLAN #2	200.00	203.00	80.00	79.51	163.702	CC, ES
HINGLEY 1K-18H-A167 - OH - PLAN #2	700.00	704.96	114.93	112.65	50.345	SF
HINGLEY 2J - PDC WELL - GYRO						Out of range
HINGLEY 2S - TEXAS TEA WELL - NO SURVEYS	400.00	401.00	171.94	170.57	125.622	CC
HINGLEY 2S - TEXAS TEA WELL - NO SURVEYS	500.00	501.02	172.14	170.37	97.323	ES
HINGLEY 2S - TEXAS TEA WELL - NO SURVEYS	1,500.00	1,479.95	264.69	258.88	45.598	SF
HINGLEY 3A-18H-N167 - OH - PLAN #1						Out of range
HINGLEY 3B-18H-N167 - OH - PLAN #1						Out of range
HINGLEY 3C-18H-N167 - OH - PLAN #1						Out of range
HINGLEY 3D-18H-N167 - OH - PLAN #1						Out of range
HINGLEY 3E-18H-N167 - OH - PLAN #1						Out of range
HINGLEY 3F-18H-N167 - OH - PLAN #1						Out of range
HINGLEY 3G-18H-N167 - OH - PLAN #1						Out of range
HINGLEY 3H-18H-N167 - OH - PLAN #1						Out of range
HINGLEY 3I-18H-N167 - OH - PLAN #1						Out of range
HINGLEY 3J-18H-N167 - OH - PLAN #1	12,503.11	8,150.47	871.35	771.41	8.719	CC, ES, SF
HINGLEY 3K-18H-N167 - OH - PLAN #2	12,503.11	8,226.43	642.95	542.52	6.402	CC, ES, SF
HINGLEY 3S - TEXAS TEA WELL - NO SURVEYS						Out of range
HINGLEY 4 - DENVER EAST WELL - NO SURVEYS						Out of range
HINGLEY 5 - DENVER EAST WELL - NO SURVEYS						Out of range
HINGLEY FARMS 32-18 - CPR WELL - GYRO	9,833.54	7,623.15	406.38	354.13	7.777	CC, ES, SF
HOPKINS 3 - KPK WELL - NO SURVEYS						Out of range
HOPKINS 32-19 1 - FRITZLER RESOURCES - NO SUR						Out of range
HOPKINS 41C-19#2 - FRITZLER RESOURCES - NO SU						Out of range
HSR RMF 12-8 - KMG WELL - NO SURVEYS						Out of range
JELTS 15C-19HZ - KMG WELL - SURVEYS	12,503.11	7,455.70	662.36	606.80	11.920	CC, ES, SF
JELTS 16N-19HZ - KMG WELL - SURVEYS						Out of range
JELTS 36N-19HZ - KMG WELL - SURVEYS	12,503.11	7,389.00	793.43	733.87	13.322	CC, ES, SF
JELTS 37C-19HZ - KMG WELL - SURVEYS						Out of range
JELTS 37N-19HZ - KMG WELL - SURVEYS	12,503.11	7,339.00	981.84	905.75	12.903	CC, ES, SF
JELTS 39C-19HZ - KMG WELL - SURVEYS						Out of range
JOHNSON 21-24 - MGF OIL CORP WELL - NO SURVE						Out of range
LAURIDSON 18-16 - KMG WELL - GYRO						Out of range

CC - Min centre to center distance or convergent point, SF - min separation factor, ES - min ellipse separation

# Cathedral Energy Services

## Anticollision Summary Report

<b>Company:</b>	Crestone Peak Resources	<b>Local Co-ordinate Reference:</b>	Well HINGLEY 1C-18H-A167 - Slot Hingley 1C-18H-A167 SHL
<b>Project:</b>	DJ BASIN	<b>TVD Reference:</b>	23' KB @ 5078.00usft
<b>Reference Site:</b>	S18-T1N-R67W (HINGLEY)	<b>MD Reference:</b>	23' KB @ 5078.00usft
<b>Site Error:</b>	0.00 usft	<b>North Reference:</b>	True
<b>Reference Well:</b>	HINGLEY 1C-18H-A167	<b>Survey Calculation Method:</b>	Minimum Curvature
<b>Well Error:</b>	0.00 usft	<b>Output errors are at</b>	2.00 sigma
<b>Reference Wellbore</b>	OH	<b>Database:</b>	USA EDM 5000 Multi Users DB
<b>Reference Design:</b>	PLAN #2	<b>Offset TVD Reference:</b>	Offset Datum

Summary						
Site Name	Reference Measured Depth (usft)	Offset Measured Depth (usft)	Distance Between Centres (usft)	Distance Between Ellipses (usft)	Separation Factor	Warning
S18-T1N-R67W (HINGLEY)						
LAURIDSON 2-A - KPK WELL - NO SURVEYS						Out of range
LAURIDSON 31-24 - KPK WELL - NO SURVEYS						Out of range
LAURIDSON 32-24 - SRC ENERGY WELL - NO SURVEYS						Out of range
LAURIDSON 41-24 - STARLIGHT RES WELL - NO SURVEYS						Out of range
LAURIDSON 42-24 - KPK WELL - NO SURVEYS						Out of range
LAURIDSON VV 18-10 - KMG WELL - GYRO	10,699.06	7,626.20	100.86	37.15	1.583	CC, ES, SF
LAURIDSON VV18-4J - KMG WELL - GYRO	11,635.82	7,678.97	587.43	509.83	7.569	CC, ES, SF
LAURIDSON-A 1 - KPK WELL - NO SURVEYS						Out of range
LINKUS 32-24 - PDC WELL - NO SURVEYS						Out of range
LINKUS 41-24 - PDC WELL - GYRO						Out of range
M B SCHWAB 2 - KMG WELL - NO SURVEYS						Out of range
MARGUERITE TOTEMS U 2 - KMG WELL - GYRO						Out of range
MARK 1-A - CHAPARRAL RES - NO SURVEYS						Out of range
NRC 11-8 - KMG WELL - SURVEYS						Out of range
NRC 12-8 - KMG WELL - SURVEYS						Out of range
NRC 13-8 - KMG WELL - SURVEYS						Out of range
NRC 14-8 - KMG WELL - SURVEYS						Out of range
NRC 15-8 - KMG WELL - SURVEYS						Out of range
NRC 22-8 - KMG WELL - SURVEYS						Out of range
NRC 23-8 - KMG WELL - SURVEYS						Out of range
NRC 28N-8HZ - KMG WELL - SURVEYS						Out of range
NRC 29N-8HZ - KMG WELL - SURVEYS						Out of range
NRC 30C-8HZ - KMG WELL - SURVEYS						Out of range
NRC 35-8 - KMG WELL - SURVEYS						Out of range
NRC 3C-8HZ - KMG WELL - SURVEYS						Out of range
NRC 4C-8HZ - KMG WELL - SURVEYS						Out of range
NRC 4N-8HZ - KMG WELL - SURVEYS						Out of range
PAUL HEINZE 1 - KPK WELL - NO SURVEYS						Out of range
RALPH 13C-19HZ - KMG WELL - SURVEYS						Out of range
RALPH 14N-19HZ - KMG WELL - SURVEYS						Out of range
RALPH 34C-19HZ - KMG WELL - SURVEYS						Out of range
RALPH 35C-19HZ - KMG WELL - SURVEYS						Out of range
RALPH 35N-19HZ - KMG WELL - SURVEYS						Out of range
RALPH 36C-19HZ - KMG WELL - SURVEYS	12,503.11	7,537.00	913.62	837.59	12.017	CC, ES, SF
ROCKY MOUNTAIN FUEL 1 - KMG WELL - NO SURVEYS						Out of range
SCHWAB #1-32-13 - KMG WELL - NO SURVEYS						Out of range
STONEBRAKER 24-12 - KMG WELL - SURVEYS						Out of range
STONEBRAKER 25-12 - KMG WELL - SURVEYS						Out of range
STONEBRAKER 8-12 - KMG WELL - SURVEYS						Out of range
TROUDT 44-7 - KMG WELL - GYRO	2,160.63	2,096.53	941.42	934.12	129.058	CC
TROUDT 44-7 - KMG WELL - GYRO	2,200.00	2,134.41	941.47	934.08	127.434	ES
TROUDT 44-7 - KMG WELL - GYRO	3,800.00	3,706.36	993.12	977.15	62.182	SF
UNDERHILL 28N-17HZ - KMG WELL - SURVEYS						Out of range
UPRR 42 PAN AM 'AL' 1 - KMG WELL - GYRO						Out of range
UPRR 42 PAN AM GAS 1 - KMG WELL - NO SURVEYS						Out of range
UPRR 42 PAN AM N #2 - KPK WELL - NO SURVEYS						Out of range
UPRR 42 PAN AM N 1 - KMG WELL - GYRO						Out of range
UPRR 42 PAN AM N 4 - KPK WELL - NO SURVEYS						Out of range
UPRR 42 PAN AM-AJ 1 - KPK WELL - NO SURVEYS	5,195.16	4,920.00	716.28	689.48	26.728	CC
UPRR 42 PAN AM-AJ 1 - KPK WELL - NO SURVEYS	5,200.00	4,920.00	716.30	689.47	26.697	ES
UPRR 42 PAN AM-AJ 1 - KPK WELL - NO SURVEYS	5,300.00	4,920.00	723.91	696.65	26.548	SF
UPRR 42 PAN AM-AJ 4 - KPK WELL - NO SURVEYS						Out of range

CC - Min centre to center distance or convergent point, SF - min separation factor, ES - min ellipse separation

# Cathedral Energy Services

## Anticollision Summary Report

<b>Company:</b>	Crestone Peak Resources	<b>Local Co-ordinate Reference:</b>	Well HINGLEY 1C-18H-A167 - Slot Hingley 1C-18H-A167 SHL
<b>Project:</b>	DJ BASIN	<b>TVD Reference:</b>	23' KB @ 5078.00usft
<b>Reference Site:</b>	S18-T1N-R67W (HINGLEY)	<b>MD Reference:</b>	23' KB @ 5078.00usft
<b>Site Error:</b>	0.00 usft	<b>North Reference:</b>	True
<b>Reference Well:</b>	HINGLEY 1C-18H-A167	<b>Survey Calculation Method:</b>	Minimum Curvature
<b>Well Error:</b>	0.00 usft	<b>Output errors are at</b>	2.00 sigma
<b>Reference Wellbore</b>	OH	<b>Database:</b>	USA EDM 5000 Multi Users DB
<b>Reference Design:</b>	PLAN #2	<b>Offset TVD Reference:</b>	Offset Datum

Summary						
Site Name	Reference Measured Depth (usft)	Offset Measured Depth (usft)	Distance Between Centres (usft)	Distance Between Ellipses (usft)	Separation Factor	Warning
S18-T1N-R67W (HINGLEY)						
UPRR 42 PAN AM-AS 1 - KMG WELL - GYRO						Out of range
UPRR 42 PAN AM-AV 1 - KPK WELL - SURVEYS						Out of range
UPRR 42 PAN AM-J 2 - KPK WELL - NO SURVEYS						Out of range
UPRR 42 PAN AM-J 3 - KPK WELL - NO SURVEYS						Out of range
UPRR 42 PAN AM-N 3 - KPK WELL - NO SURVEYS						Out of range
UPRR 43 PAN AM 1 2 - KPK WELL - NO SURVEYS						Out of range
UPRR 43 PAN AM 1 3 - KPK WELL - NO SURVEYS						Out of range
UPRR 43 PAN AM H 10 - KPK WELL - NO SURVEYS						Out of range
UPRR 43 PAN AM H 2 - KPK WELL - NO SURVEYS						Out of range
UPRR 43 PAN AM I #5 - KPK WELL - NO SURVEYS						Out of range
UPRR 43 PAN AM M TRUE #1 - KMG WELL - GYRO						Out of range
UPRR 43 PAN AM O 1 - KMG WELL - NO SURVEYS						Out of range
UPRR 43 PAN AM-H 7 - AMOCO WELL - NO SURVEYS						Out of range
UPRR 43 PAN AM-I 14 - KPK WELL - NO SURVEYS						Out of range
UPRR 43 PAN AM-I 15 - KPK WELL - NO SURVEYS						Out of range
UPRR 43 PAN AM-I 26 - KPK WELL - NO SURVEYS						Out of range
UPRR 43 PAN AM-I 31 - KPK WELL - NO SURVEYS						Out of range
UPRR 43 PAN AM-J 1 - KMG WELL - NO SURVEYS						Out of range
UPRR PAN AM H 3 - KPK WELL - NO SURVEYS						Out of range
UPRR43PANAM-I 16 - KPK WELL - NO SURVEYS						Out of range

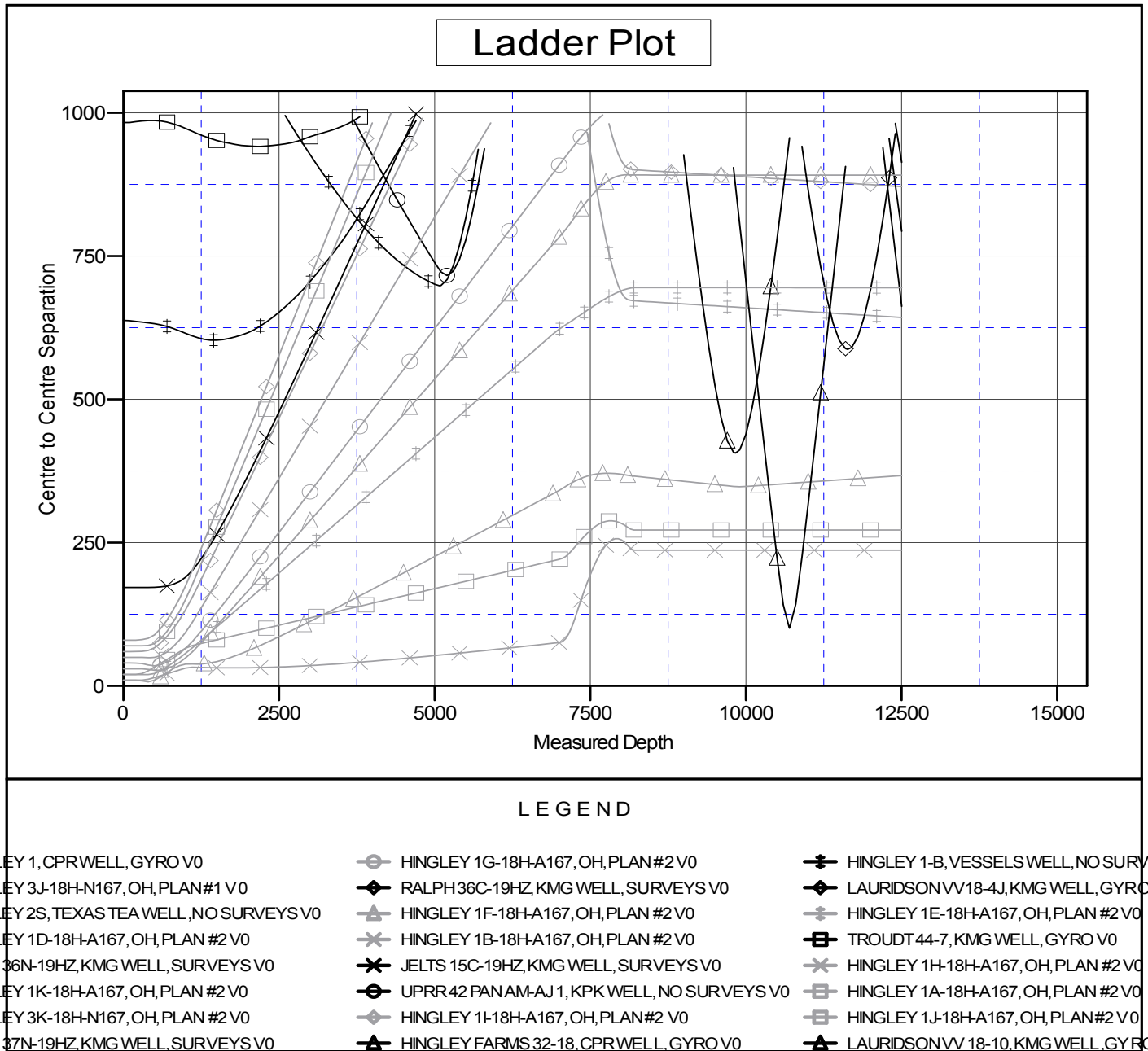
# Cathedral Energy Services

## Anticollision Summary Report

<b>Company:</b>	Crestone Peak Resources	<b>Local Co-ordinate Reference:</b>	Well HINGLEY 1C-18H-A167 - Slot Hingley 1C-18H-A167 SHL
<b>Project:</b>	DJ BASIN	<b>TVD Reference:</b>	23' KB @ 5078.00usft
<b>Reference Site:</b>	S18-T1N-R67W (HINGLEY)	<b>MD Reference:</b>	23' KB @ 5078.00usft
<b>Site Error:</b>	0.00 usft	<b>North Reference:</b>	True
<b>Reference Well:</b>	HINGLEY 1C-18H-A167	<b>Survey Calculation Method:</b>	Minimum Curvature
<b>Well Error:</b>	0.00 usft	<b>Output errors are at</b>	2.00 sigma
<b>Reference Wellbore</b>	OH	<b>Database:</b>	USA EDM 5000 Multi Users DB
<b>Reference Design:</b>	PLAN #2	<b>Offset TVD Reference:</b>	Offset Datum

Reference Depths are relative to 23' KB @ 5078.00usft  
Offset Depths are relative to Offset Datum  
Central Meridian is -105.500000

Coordinates are relative to: HINGLEY 1C-18H-A167 - Slot Hingley 1C-18H-A167  
Coordinate System is US State Plane 1983, Colorado Northern Zone  
Grid Convergence at Surface is: 0.37°



CC - Min centre to center distance or convergent point, SF - min separation factor, ES - min ellipse separation

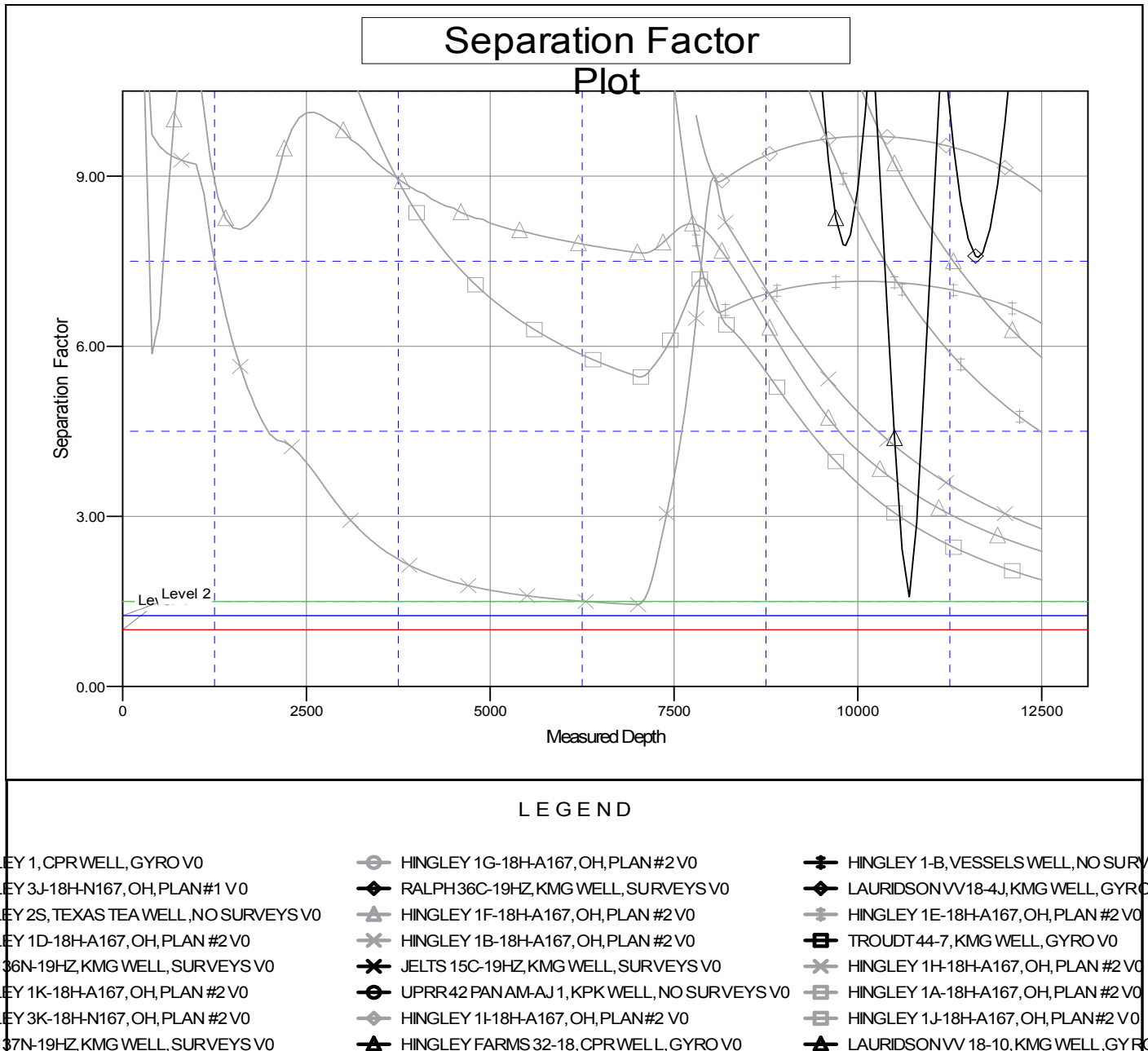
# Cathedral Energy Services

## Anticollision Summary Report

<b>Company:</b>	Crestone Peak Resources	<b>Local Co-ordinate Reference:</b>	Well HINGLEY 1C-18H-A167 - Slot Hingley 1C-18H-A167 SHL
<b>Project:</b>	DJ BASIN	<b>TVD Reference:</b>	23' KB @ 5078.00usft
<b>Reference Site:</b>	S18-T1N-R67W (HINGLEY)	<b>MD Reference:</b>	23' KB @ 5078.00usft
<b>Site Error:</b>	0.00 usft	<b>North Reference:</b>	True
<b>Reference Well:</b>	HINGLEY 1C-18H-A167	<b>Survey Calculation Method:</b>	Minimum Curvature
<b>Well Error:</b>	0.00 usft	<b>Output errors are at</b>	2.00 sigma
<b>Reference Wellbore</b>	OH	<b>Database:</b>	USA EDM 5000 Multi Users DB
<b>Reference Design:</b>	PLAN #2	<b>Offset TVD Reference:</b>	Offset Datum

Reference Depths are relative to 23' KB @ 5078.00usft  
Offset Depths are relative to Offset Datum  
Central Meridian is -105.500000

Coordinates are relative to: HINGLEY 1C-18H-A167 - Slot Hingley 1C-18H-A167  
Coordinate System is US State Plane 1983, Colorado Northern Zone  
Grid Convergence at Surface is: 0.37°



CC - Min centre to center distance or convergent point, SF - min separation factor, ES - min ellipse separation