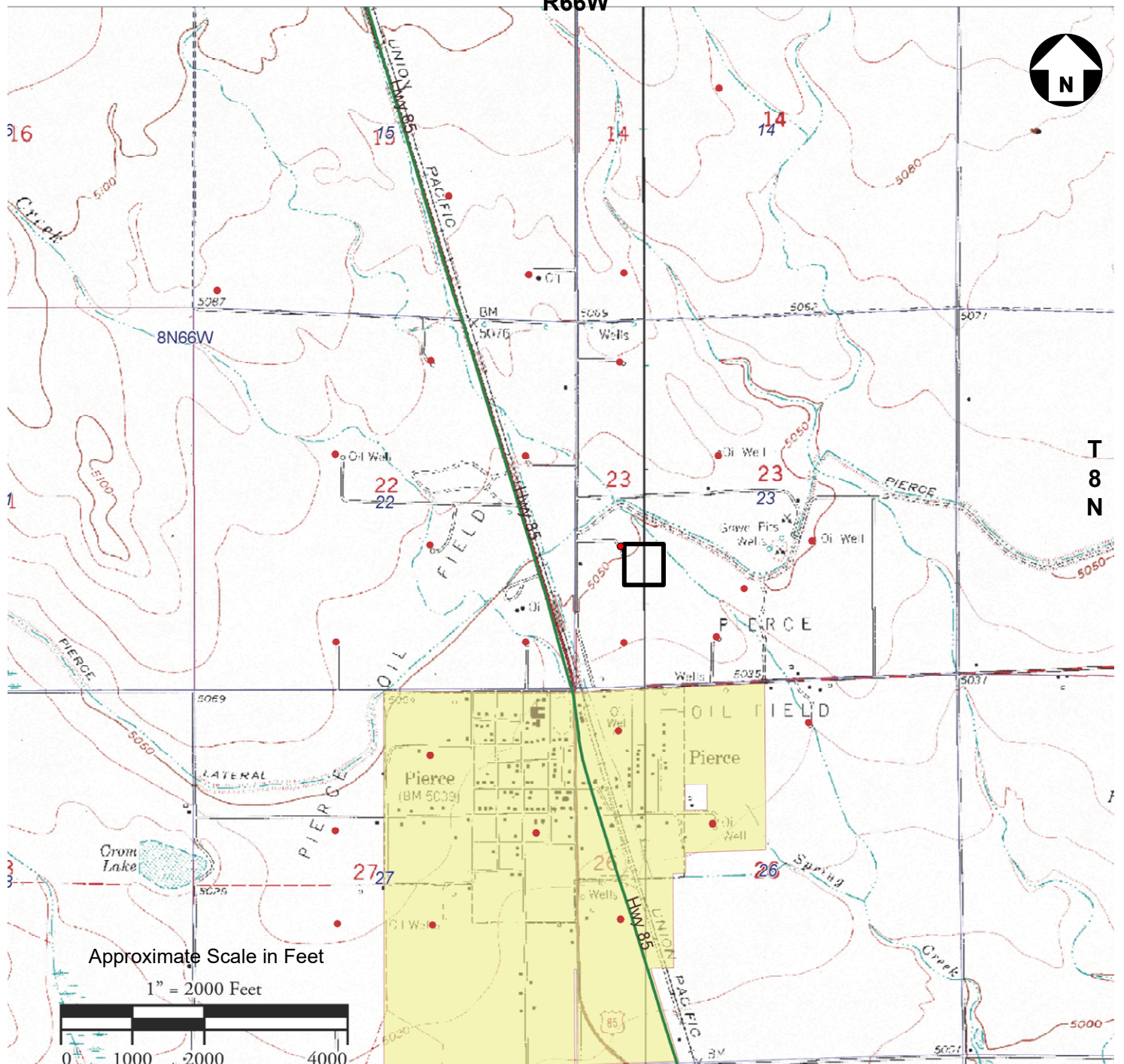


R66W



Approximate Scale in Feet

1" = 2000 Feet

**LEGEND:**

Pierce Unit #2  
Flowline Leak Location  
(near the UPRR Priddy #1 PA'd Well)

40.645397 N Latitude  
-104.751406 W Longitude

NW ¼ SW ¼ Section 23, T8N, R66W, 6<sup>th</sup> P.M.

● Oil and Gas Well Location

Base Map Generated from the USGS  
7.5-minute Nunn Topographic  
Quadrangle Map

PROJECT NO: 018-1120

DRAWN BY: JWH

DATE: 04/02/2018

**General Site Location Map**  
**Pierce Unit #2 Flowline Leak**  
**Weld County, Colorado**

**OLSSON**  
ASSOCIATES

1880 Fall River Dr. #200  
Loveland, Colorado 80538  
TEL 970.461.7733  
FAX 970.635.3709

FIGURE

1