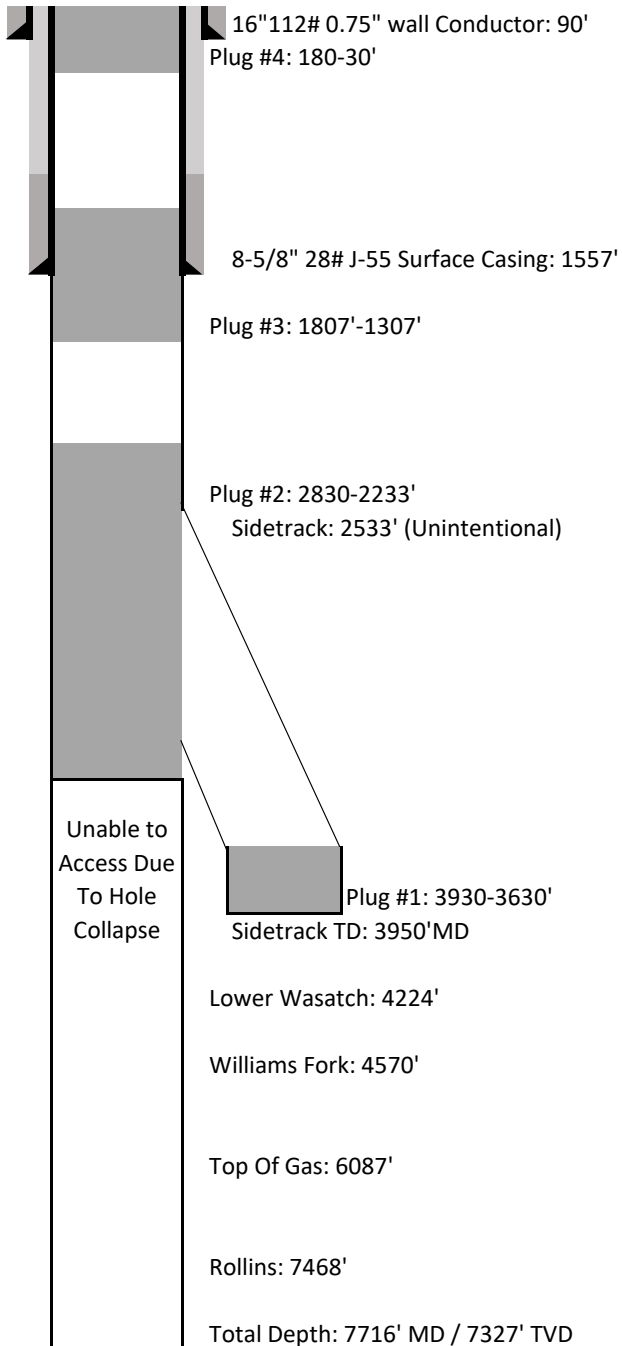


# Laramie Energy LLC

## Proposed P&A Wellbore Schematic



<b>Well Name</b>	<b>Nichols 0994-24-16W</b>
<b>API No.</b>	<b>05-077-10384-00</b>
<b>Diagram Date</b>	3/29/2018
<b>Legal Location</b>	SENW 24 9S 94W 6th PM
<b>GPS Coordinates</b>	Lat 39.263308
	Long -107.830872
<b>Field</b>	Brush Creek
<b>County</b>	Mesa
<b>State</b>	Colorado
<b>G.L. Elevation</b>	7212'
<b>K.B. Elevation</b>	7236'

### Plug Details

#### **Plug #1**

88sks of 15.8ppg Neat G Cement at 1.15 ft3/ft  
3930-3630'

#### **Plug #2**

229sks of 15.8ppg Neat G Cement at 1.15 ft3/ft  
2833-2233'

#### **Plug #3**

175sks of 15.8ppg Neat G Cement at 1.16 ft3/ft  
1807'-1307'

#### **Plug #4**

44sks of 15.8ppg Neat G Cement at 1.16 ft3/ft  
180'-30'

*All depths are referenced to KB  
Not to scale*