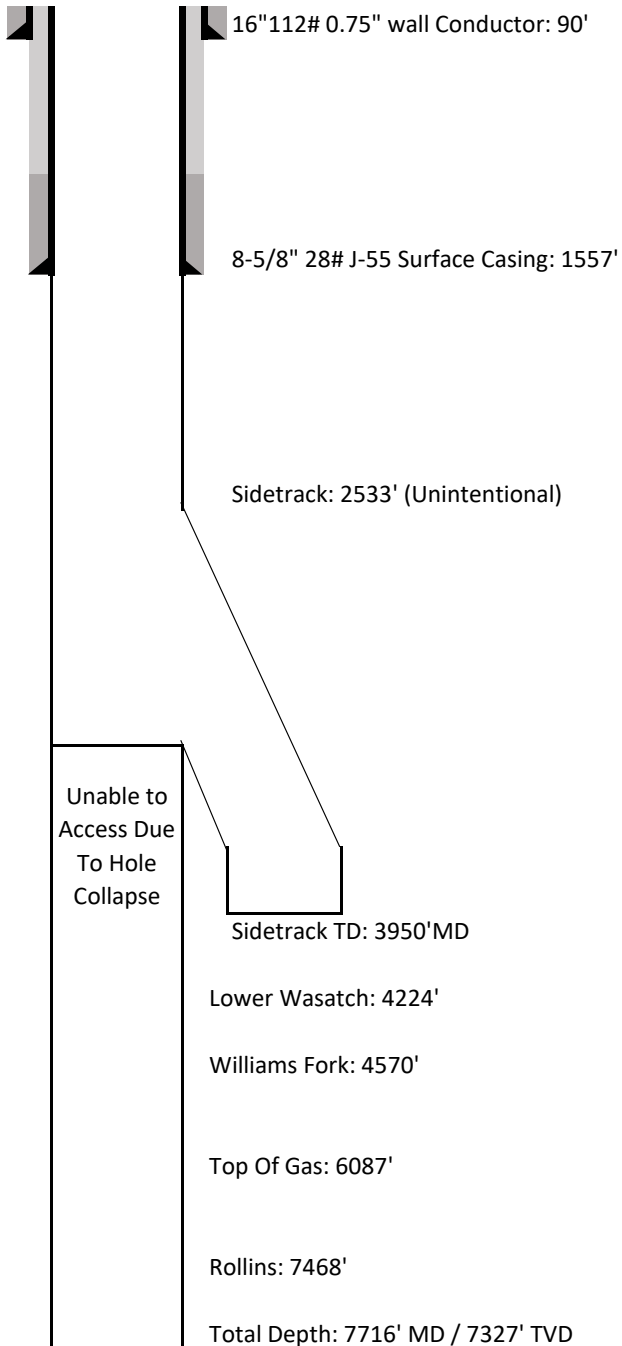


# Laramie Energy LLC

## Current Wellbore Schematic



<b>Well Name</b>	<b>Nichols 0994-24-16W</b>
<b>API No.</b>	<b>05-077-10384-00</b>
<b>Diagram Date</b>	3/29/2018
<b>Legal Location</b>	SENW 24 9S 94W 6th PM
<b>GPS Coordinates</b>	Lat 39.263308 Long -107.830872
<b>Field</b>	Brush Creek
<b>County</b>	Mesa
<b>State</b>	Colorado
<b>G.L. Elevation</b>	7212'
<b>K.B. Elevation</b>	7236'

### Cementing Details

#### **Conductor Pipe**

16" 112# 0.750" wall set at 60'  
4yds of Concrete to surface

#### **Surface Casing**

8-5/8" 28# J-55 set at 1557'  
Lead: 170sk of 12.0ppg lead  
ALTCem S100-12  
2.52cf/sk  
Tail: 107sk of 12.5ppg tail  
ALTCem S100-12  
2.22cf/sk  
32bbls of good cement to surface

*All depths are referenced to KB  
Not to scale*