

RADIAL CEMENT BOND
GAMMA RAY
CCL LOG

Company SRC ENERGY INC.		Company SRC ENERGY INC.	
Well LHI 14-11	Well LHI 14-11	Well LHI 14-11	Well LHI 14-11
Field WATTENBURG	Field WATTENBURG	Field WATTENBURG	Field WATTENBURG
County WELD	County WELD	County WELD	County WELD
State CO	State CO	State CO	State CO
Location: API # : 05-123-19972		Other Services	
NE/NE LAT. 40.317375 LONG. -104.850653 SEC 14 TWP 4N RGE 67W		Elevation 4,769'	
Permanent Datum GL Log Measured From K.B. OF 11' Drilling Measured From KELLY BUSHING		Elevation K.B. 4,780' D.F. 4,779' G.L. 4,769'	
Date 2-23-18	Date 2-23-18	Date 2-23-18	Date 2-23-18
Run Number ONE	Run Number ONE	Run Number ONE	Run Number ONE
Depth Driller 7.343'	Depth Driller 7.343'	Depth Driller 7.343'	Depth Driller 7.343'
Depth Logger 6.801'	Depth Logger 6.801'	Depth Logger 6.801'	Depth Logger 6.801'
Bottom Logged Interval 6.795'	Bottom Logged Interval 6.795'	Bottom Logged Interval 6.795'	Bottom Logged Interval 6.795'
Top Log Interval SURFACE	Top Log Interval SURFACE	Top Log Interval SURFACE	Top Log Interval SURFACE
Open Hole Size 7 7/8"	Open Hole Size 7 7/8"	Open Hole Size 7 7/8"	Open Hole Size 7 7/8"
Type Fluid WATER	Type Fluid WATER	Type Fluid WATER	Type Fluid WATER
Density / Viscosity 1.0	Density / Viscosity 1.0	Density / Viscosity 1.0	Density / Viscosity 1.0
Max. Recorded Temp. 215 DEG. F.	Max. Recorded Temp. 215 DEG. F.	Max. Recorded Temp. 215 DEG. F.	Max. Recorded Temp. 215 DEG. F.
Estimated Cement Top 5.920'	Estimated Cement Top 5.920'	Estimated Cement Top 5.920'	Estimated Cement Top 5.920'
Time Well Ready ON ARRIVAL	Time Well Ready ON ARRIVAL	Time Well Ready ON ARRIVAL	Time Well Ready ON ARRIVAL
Time Logger on Bottom N/A	Time Logger on Bottom N/A	Time Logger on Bottom N/A	Time Logger on Bottom N/A
Equipment Number 3812	Equipment Number 3812	Equipment Number 3812	Equipment Number 3812
Location GREELEY, CO	Location GREELEY, CO	Location GREELEY, CO	Location GREELEY, CO
Recorded By CODY FORNENGO	Recorded By CODY FORNENGO	Recorded By CODY FORNENGO	Recorded By CODY FORNENGO
Witnessed By D.OLMEDA	Witnessed By D.OLMEDA	Witnessed By D.OLMEDA	Witnessed By D.OLMEDA
Borehole Record		Tubing Record	
Run Number	Bit	From	To
Size	Wgt/Ft	Top	Bottom
8 5/8"	24#	SURFACE	398'
4 1/2"	11.6 #	SURFACE	7.333'
Liner			

<<< Fold Here >>>

All interpretations are opinions based on inferences from electrical or other measurements and we cannot and do not guarantee the accuracy or correctness of any interpretation, and we shall not, except in the case of gross or willful negligence on our part, be liable or responsible for any loss, costs, damages, or expenses incurred or sustained by anyone resulting from any interpretation made by any of our officers, agents or employees. These interpretations are also subject to our general terms and conditions set out in our current Price Schedule.

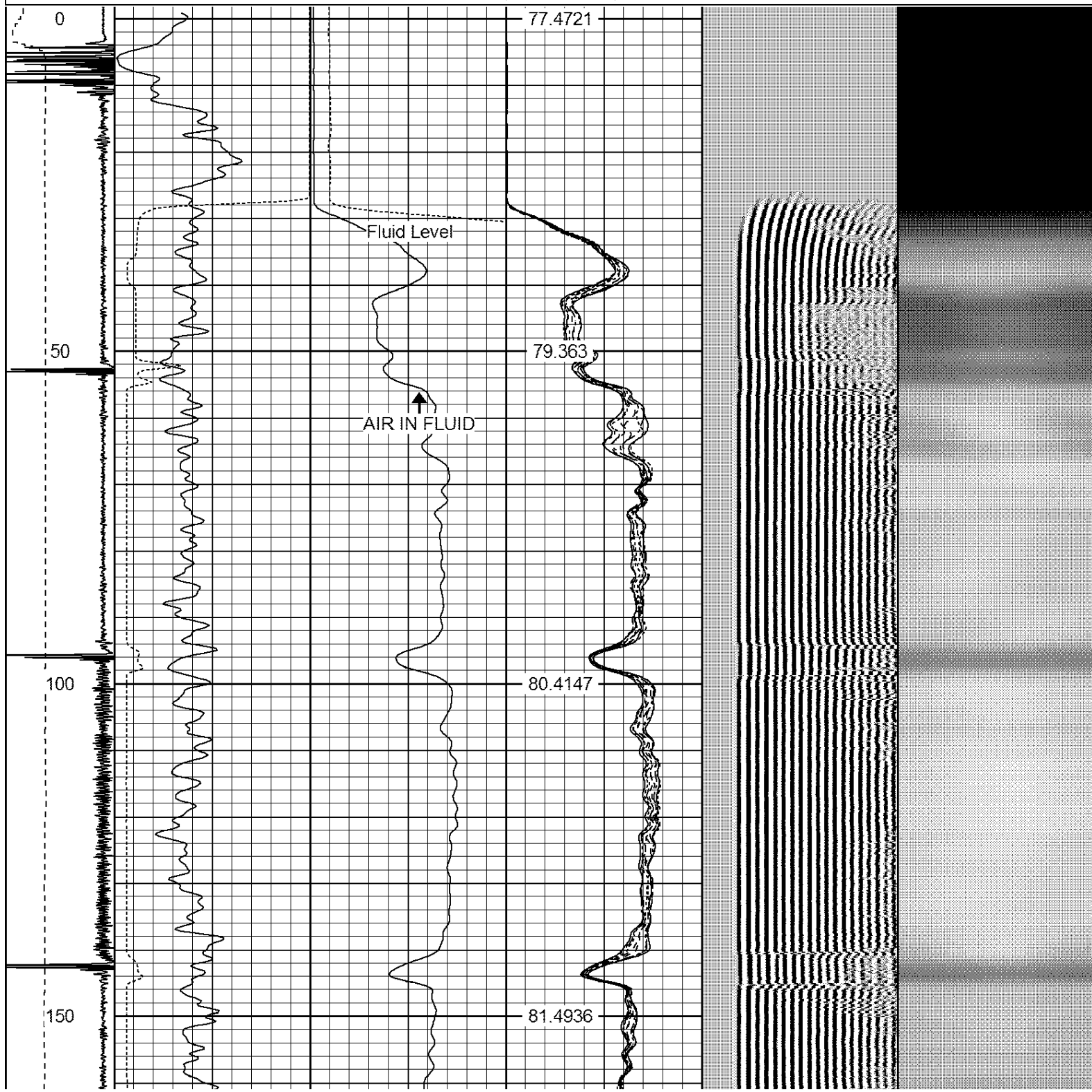
Comments

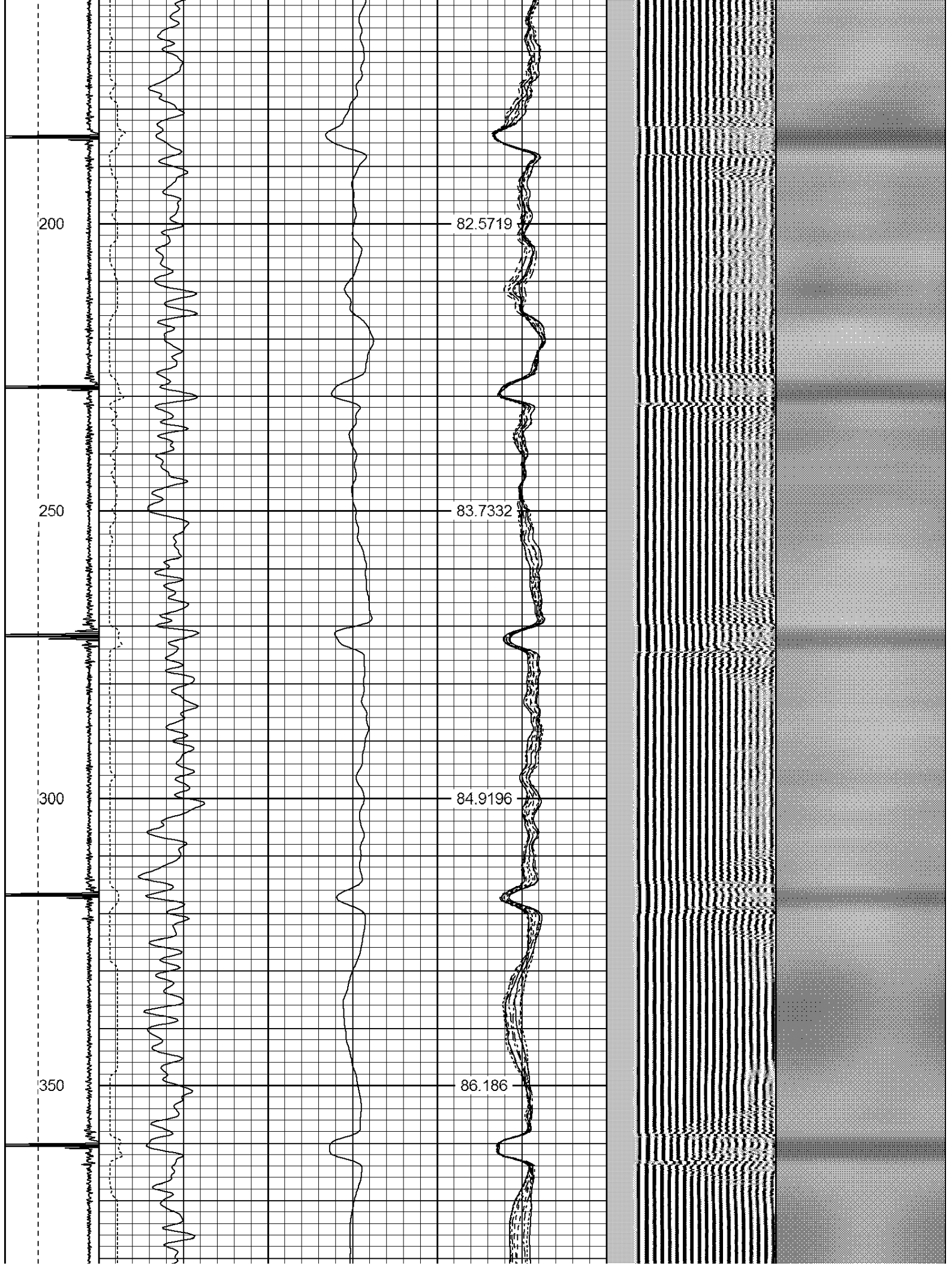
RAN CBL TO VERIFY CEMENT COVERAGE
RAN RCBL OFF KB OF 11'

Sensor	Offset (ft)	Schematic	Description	Len (ft)	OD (in)	Wt (lb)
HEAD/VOI	16.13		1_4	1.00	1.36	5.00

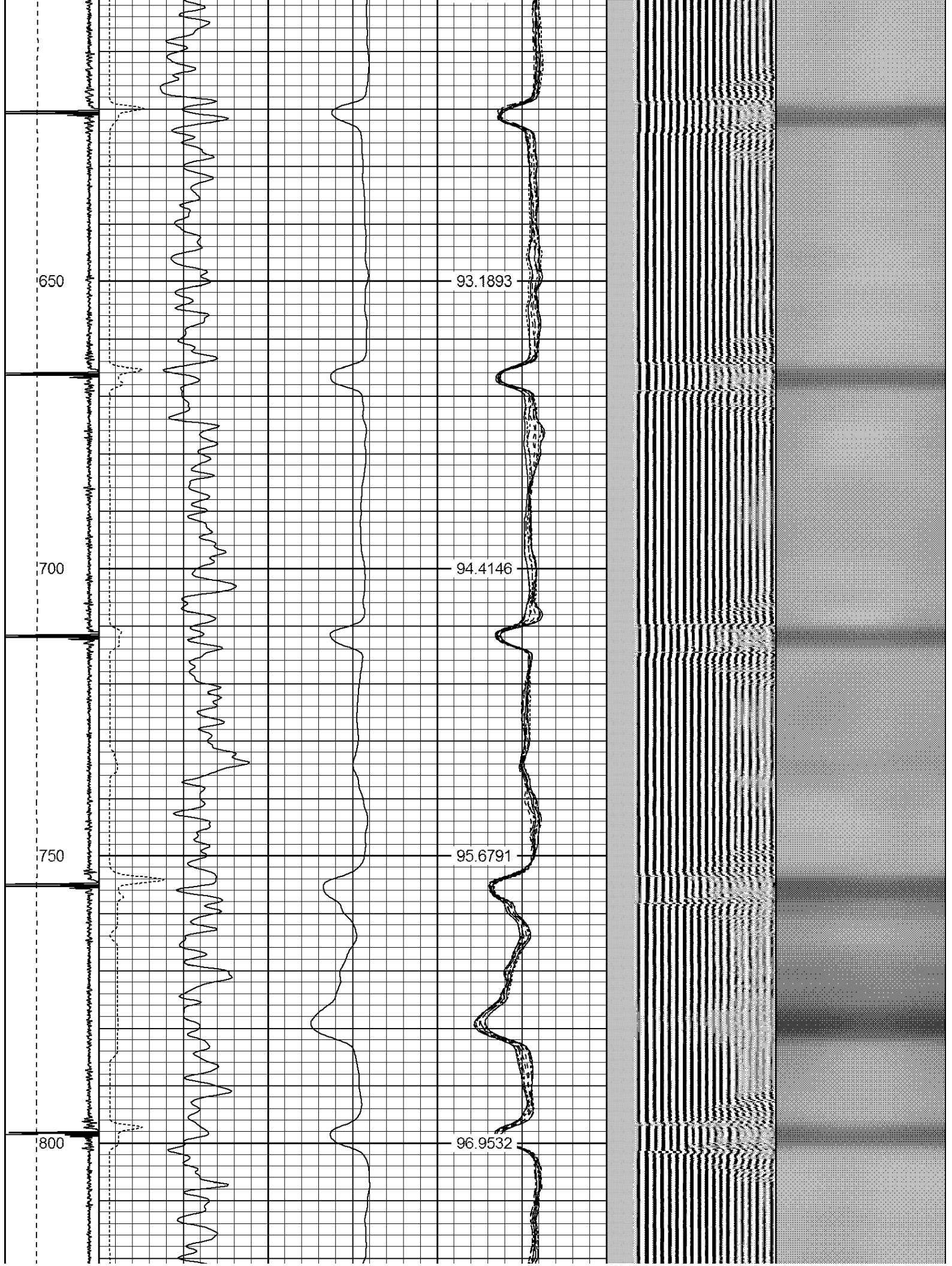
HEADVOLT		16.13									
IntTemp	14.71										
WVF3FT	11.46										
WVFCAL	11.46										
WVFS1	11.46										
WVFS2	11.46										
WVFS3	11.46										
WVFS4	11.46										
WVFS5	11.46										
WVFS6	11.46										
WVFS7	11.46										
WVFS8	11.46										
WVF5FT	10.46										
CNLSC	6.00										
CNSSC	5.17										
CCL	3.64										
GR	0.90										
				RBT-Probe (Base) Probe Radii Bond Tool with Digital Telemetry		8.92		2.75		90.00	
				CNT-Probe_B (275) Bow centralizer		2.88		2.75		40.00	
				GR-Probe (275) Probe 2.75"		4.33		2.75		30.00	
Dataset:				lhi 14-11.db: field/well/run1/pass8							
Total Length:				17.13 ft							
Total Weight:				165.00 lb							
O.D.				2.75 in							

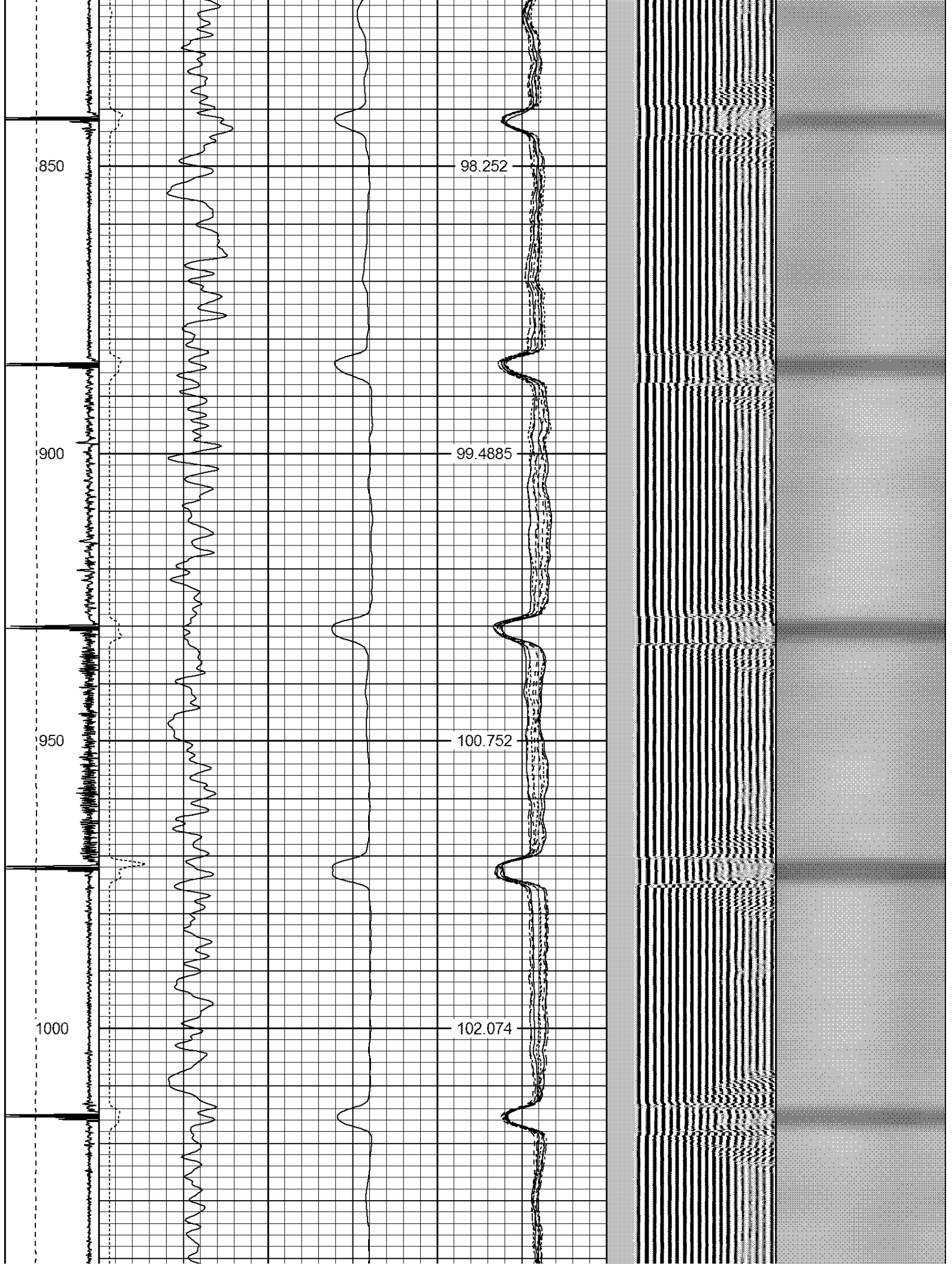
-9	CCL	1	200	TT (usec)	1200	0	AMP (mV)	100	0	AMPS1	100	200	VDL	1200	1	Cement Map	8
LSPD			0	GR (GAPI)	200	0	AMPx5 (mV)	20	0	AMPS2	100				100		1
(ft/min)			200	GR (GAPI)	400				0	AMPS3	100						
0	250								0	AMPS4	100						
									0	AMPS5	100						
									0	AMPS6	100						
									0	AMPS7	100						
									0	AMPS8	100						
										IntTemp							
										(degF)							

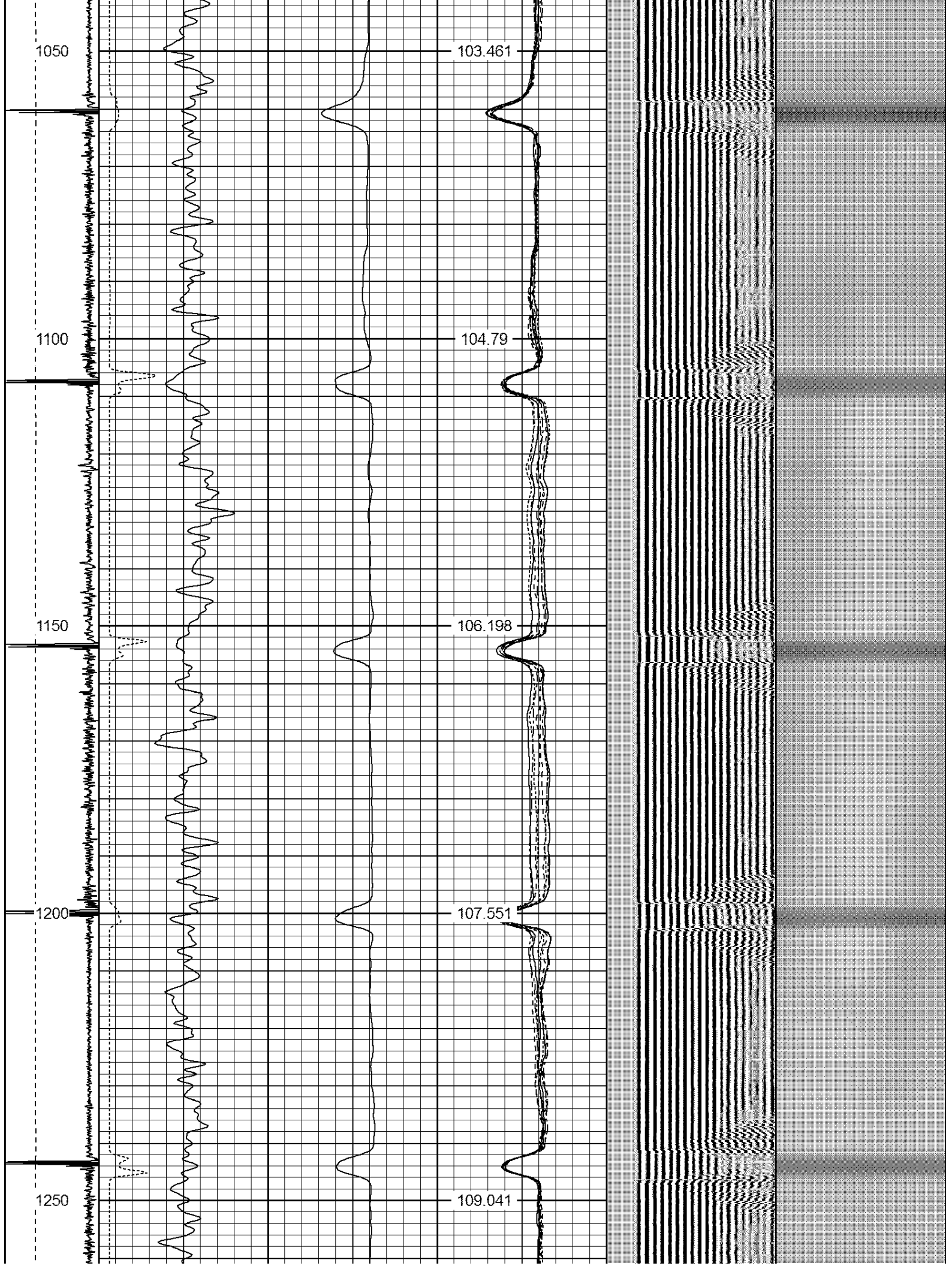




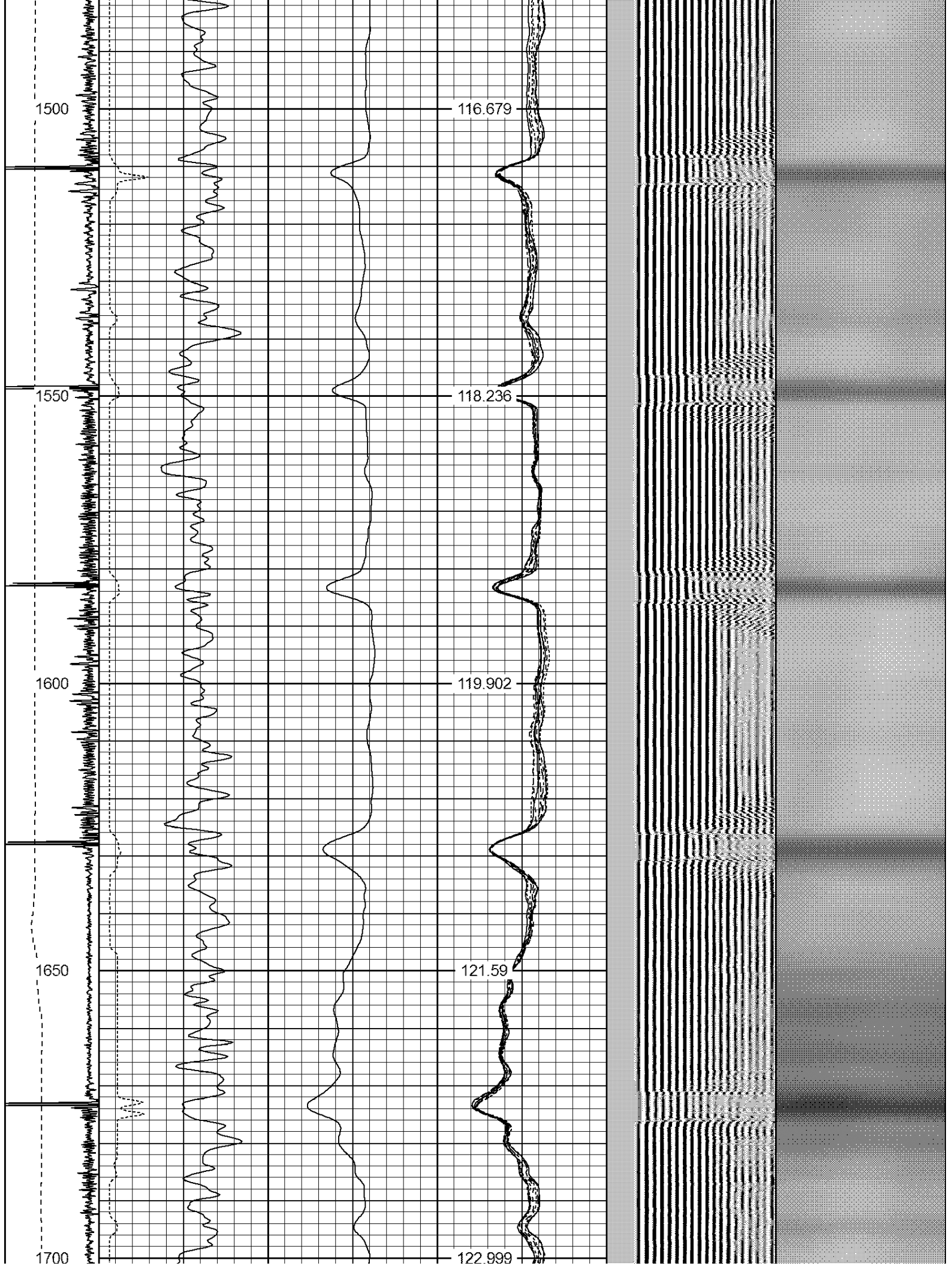




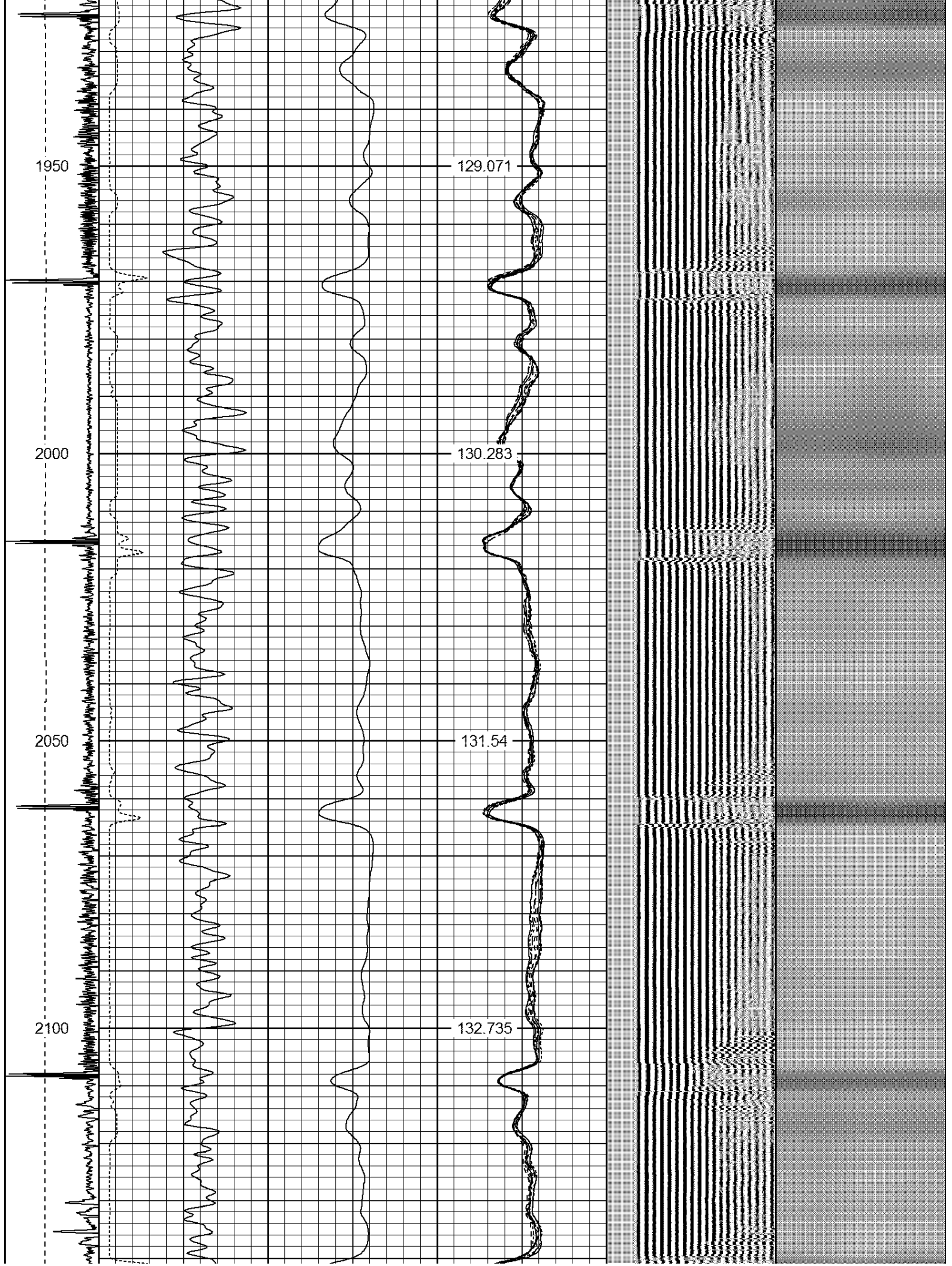






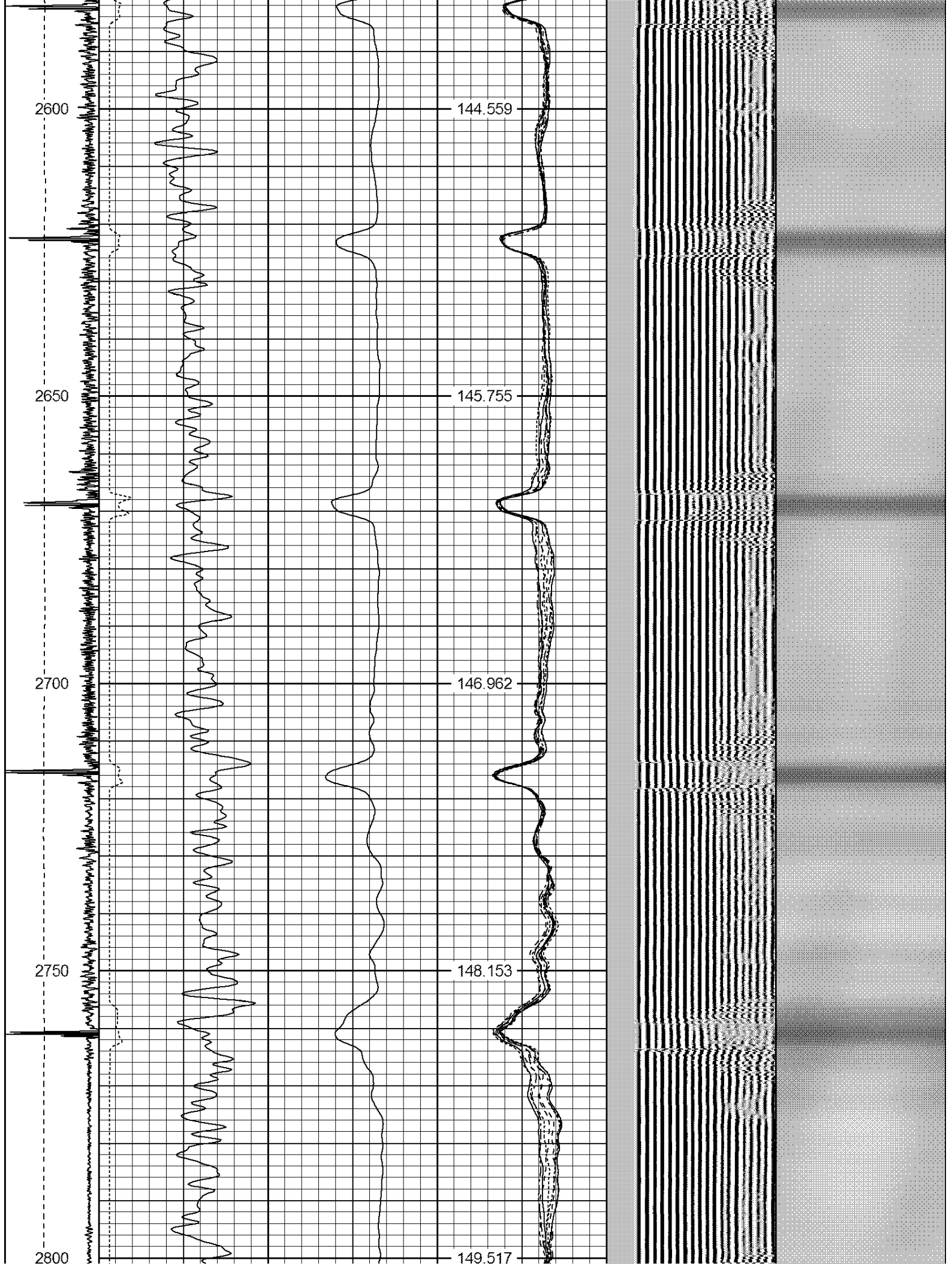








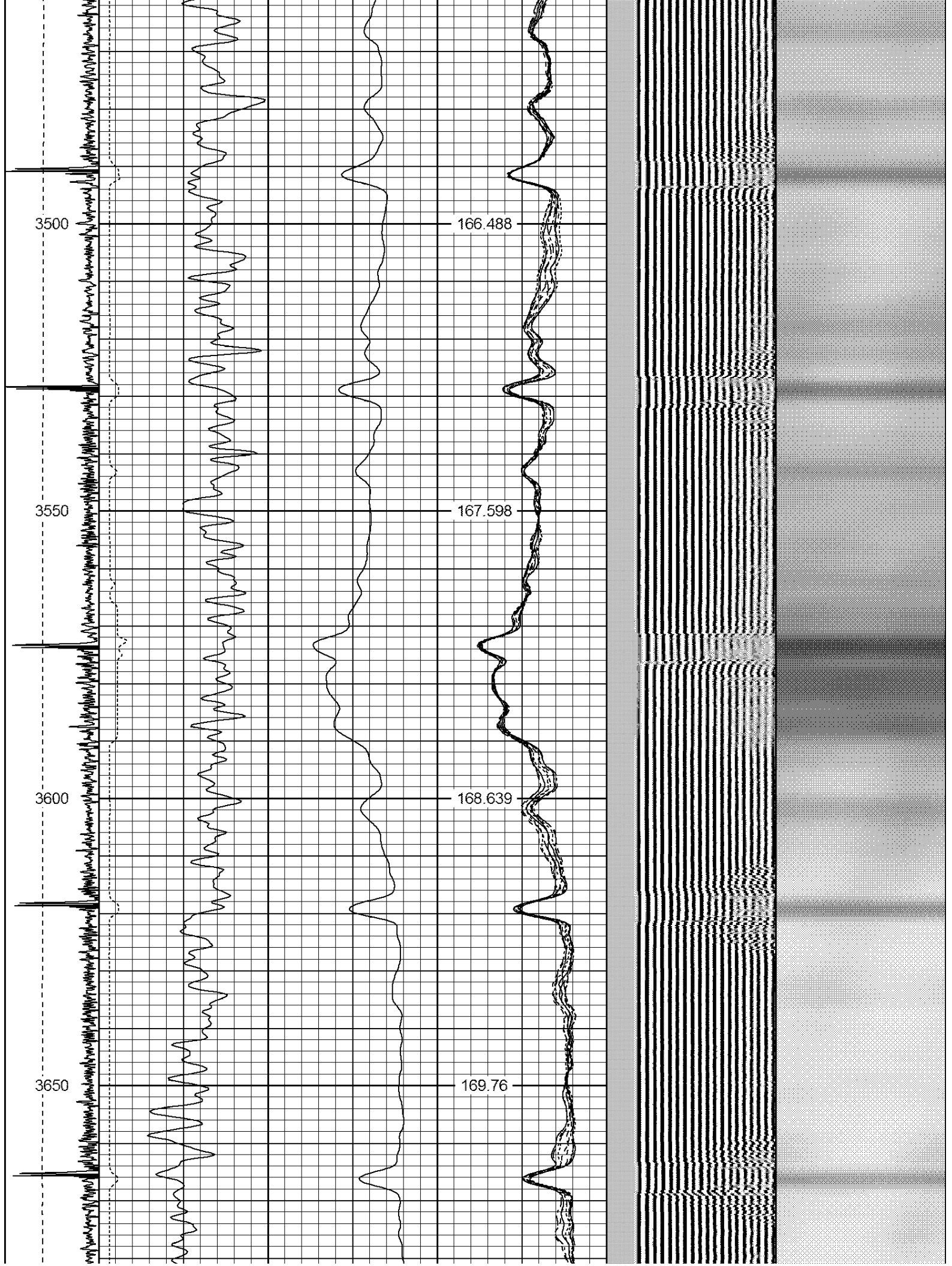


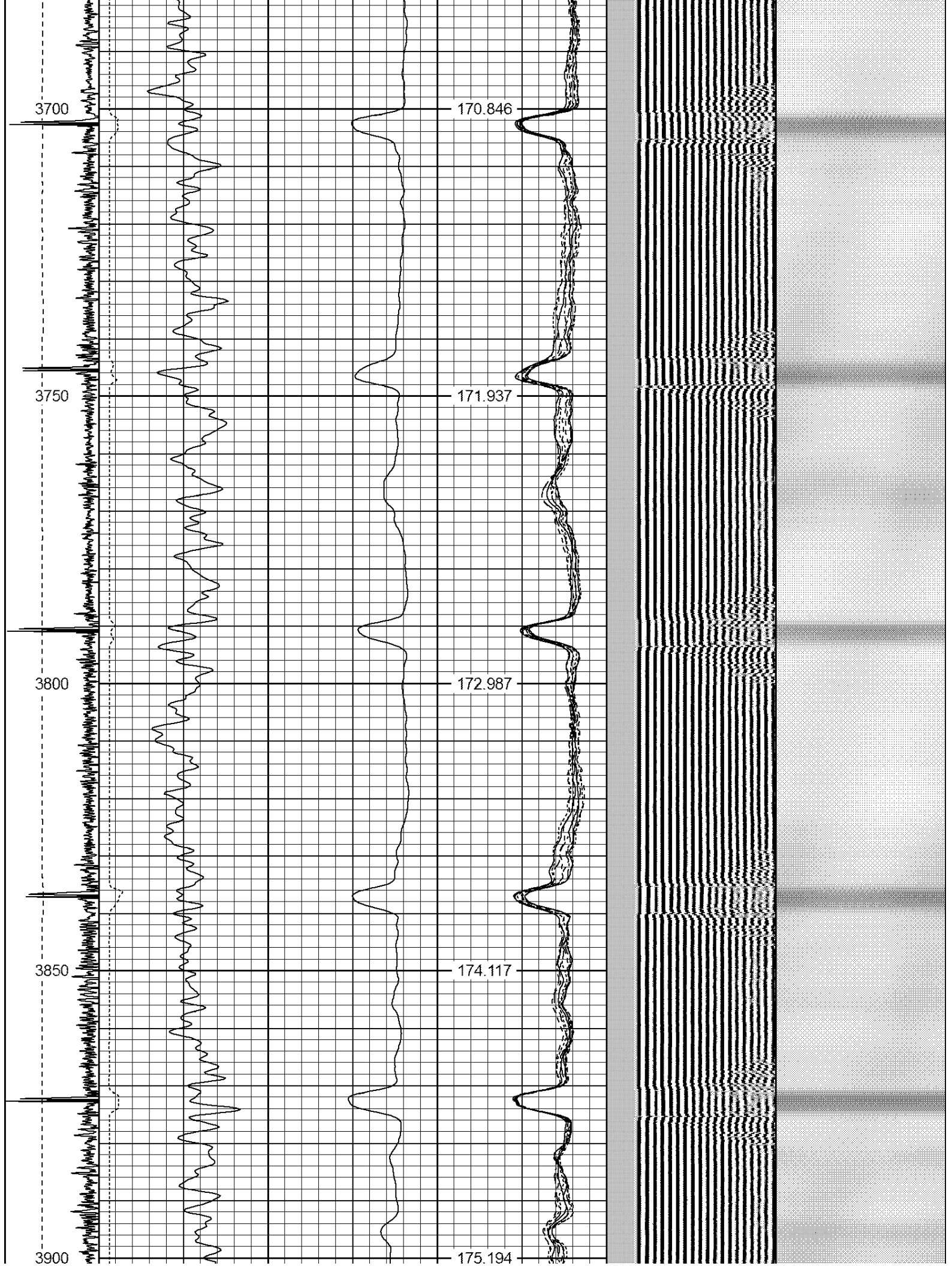












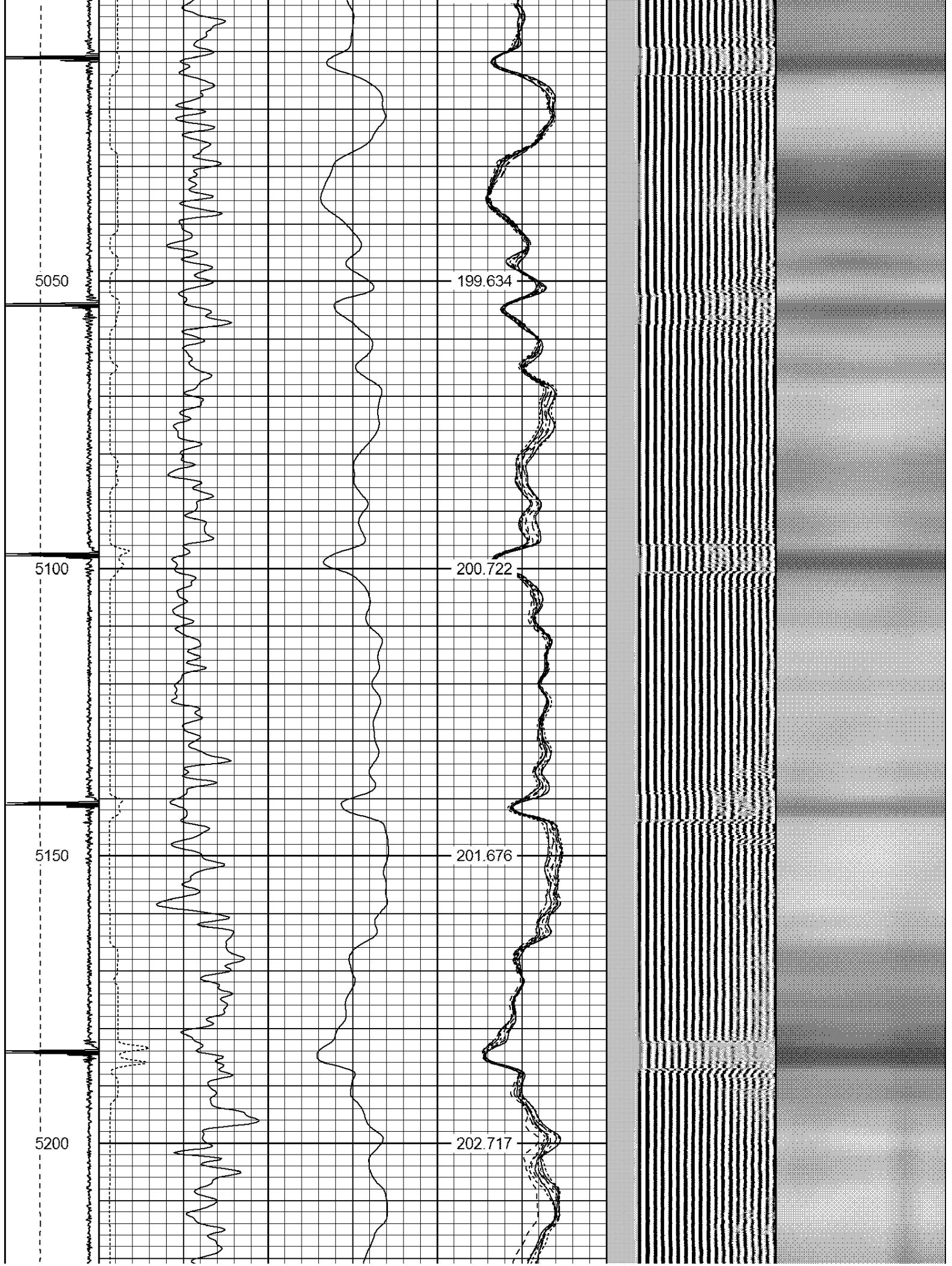




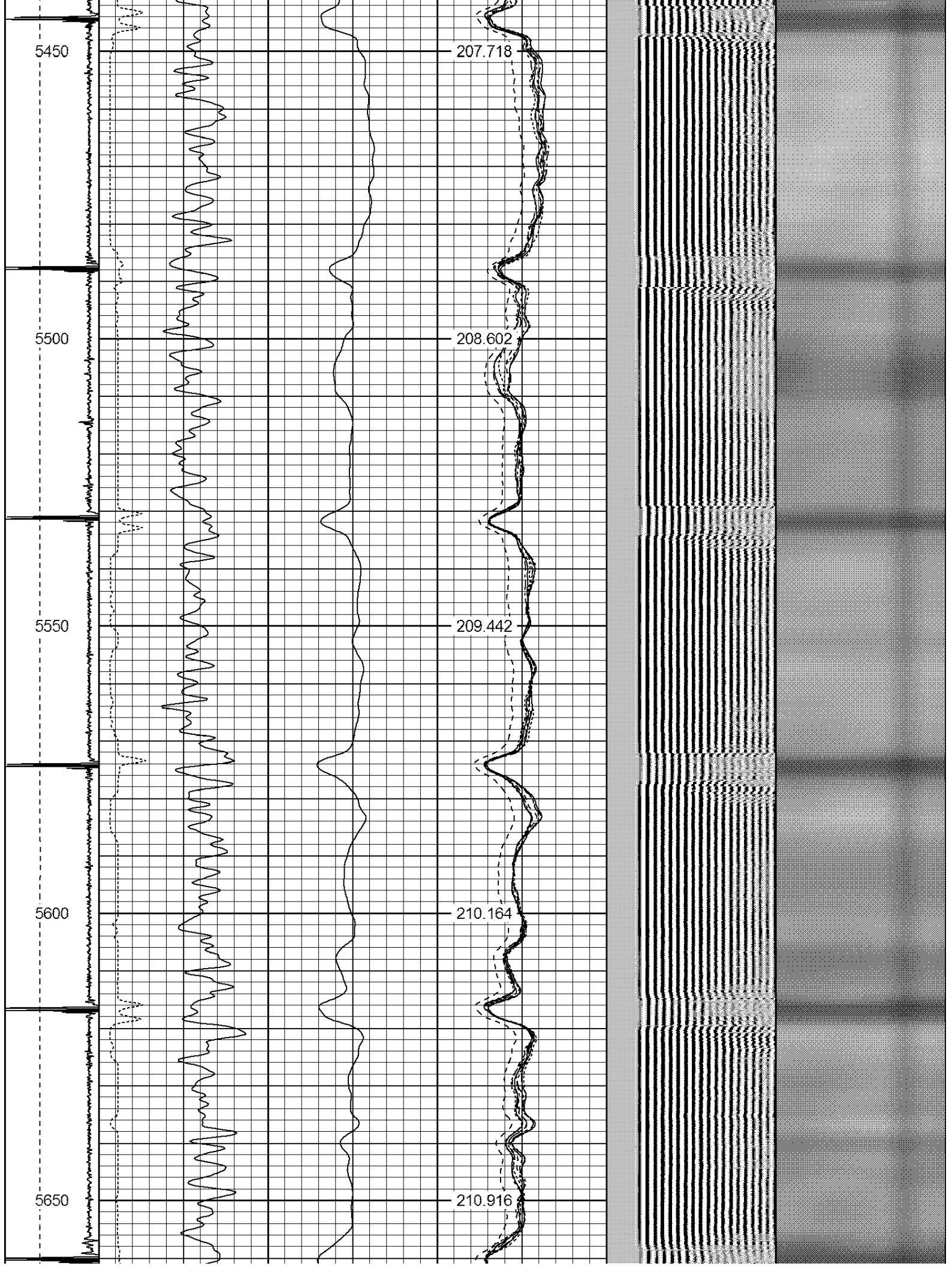


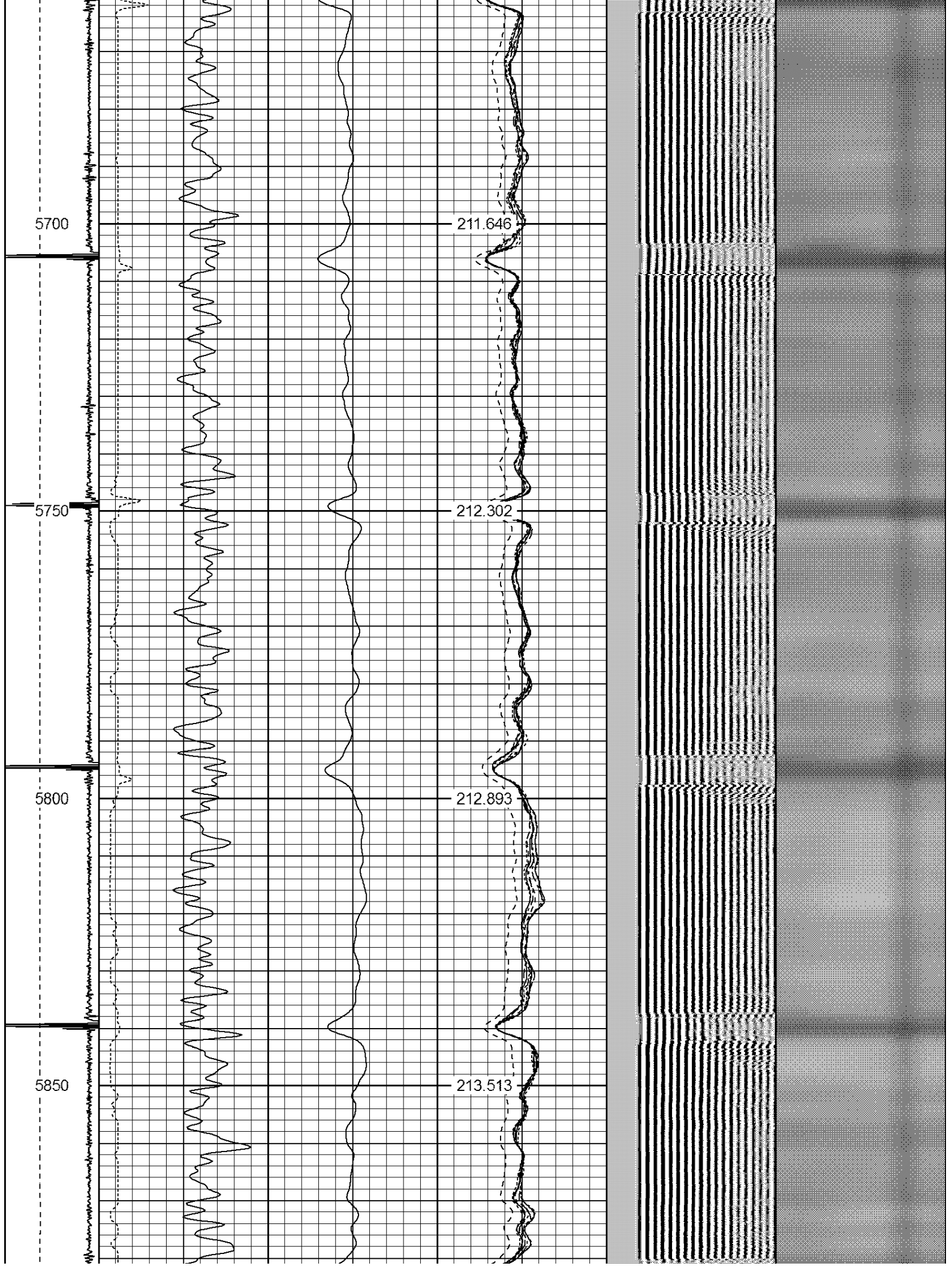






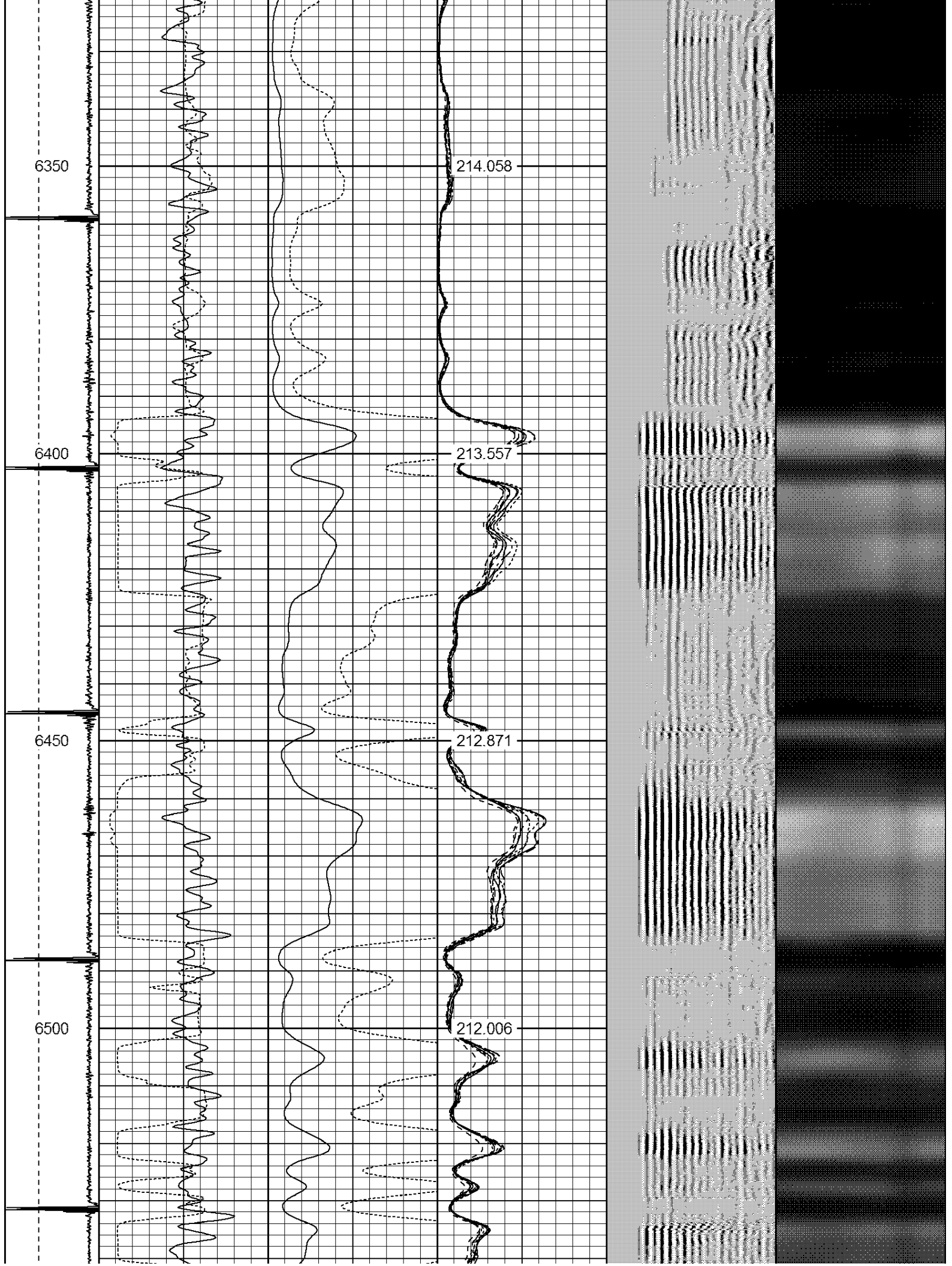


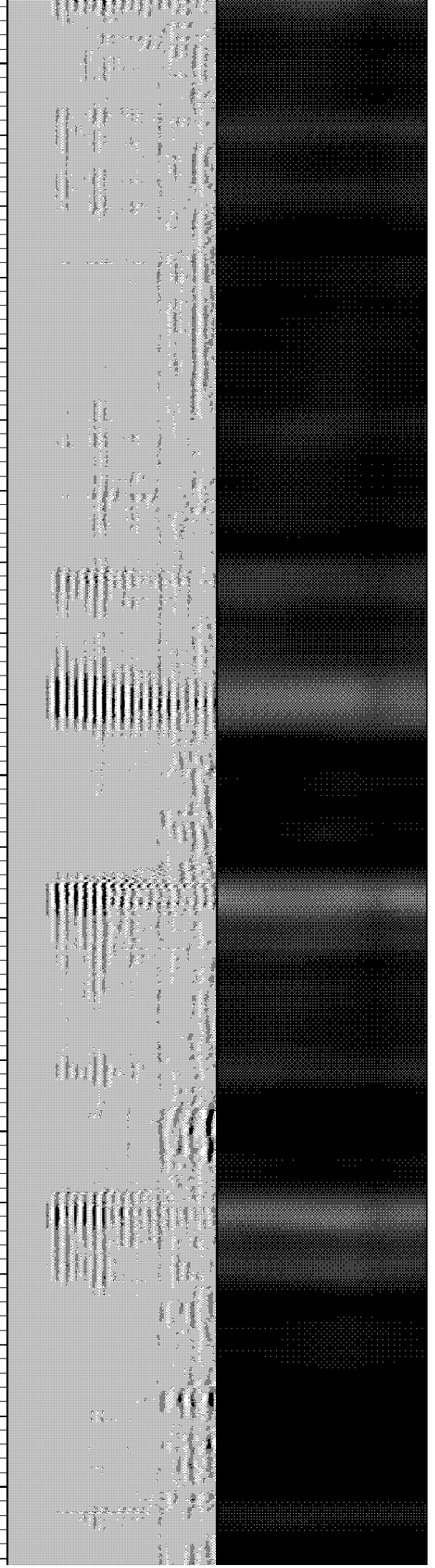
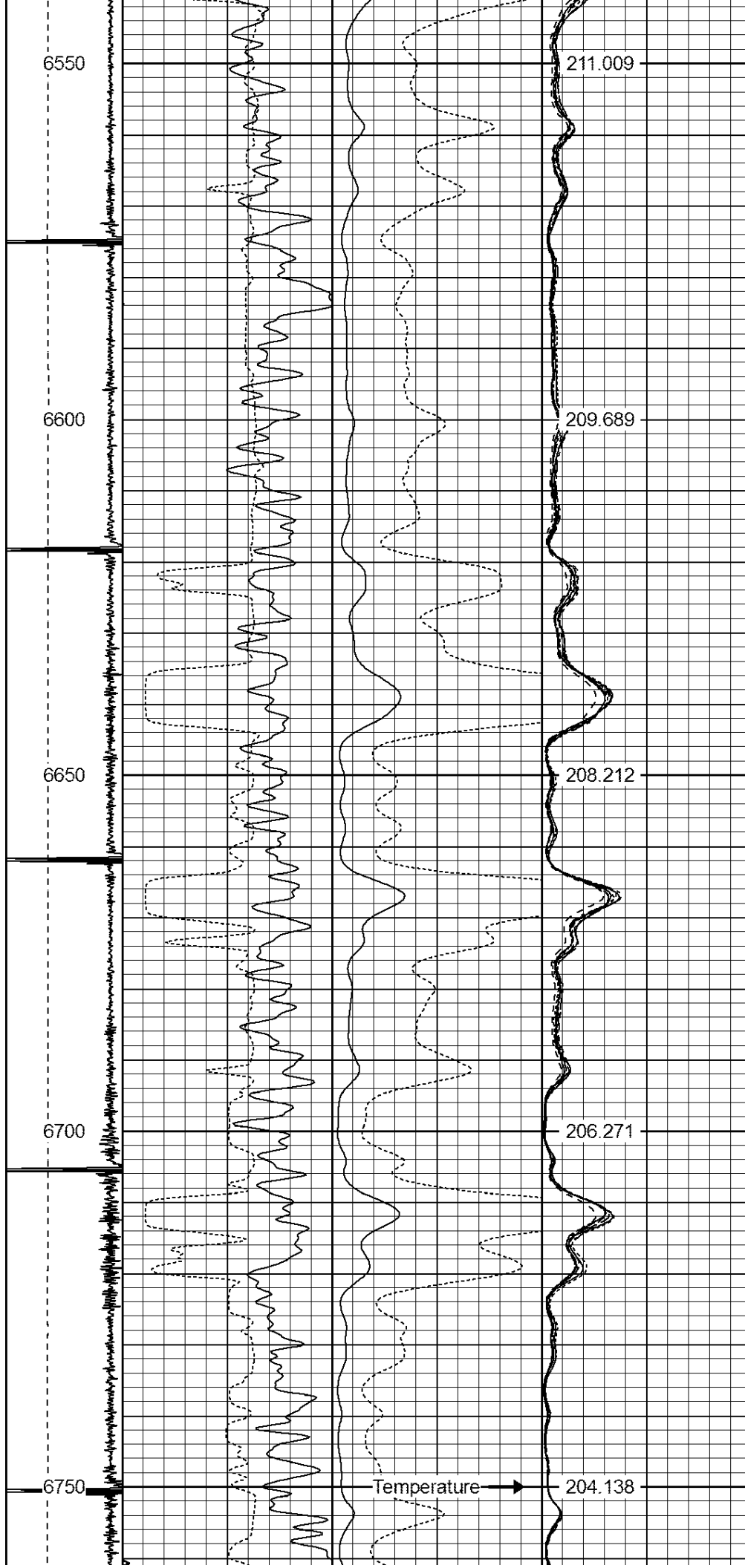


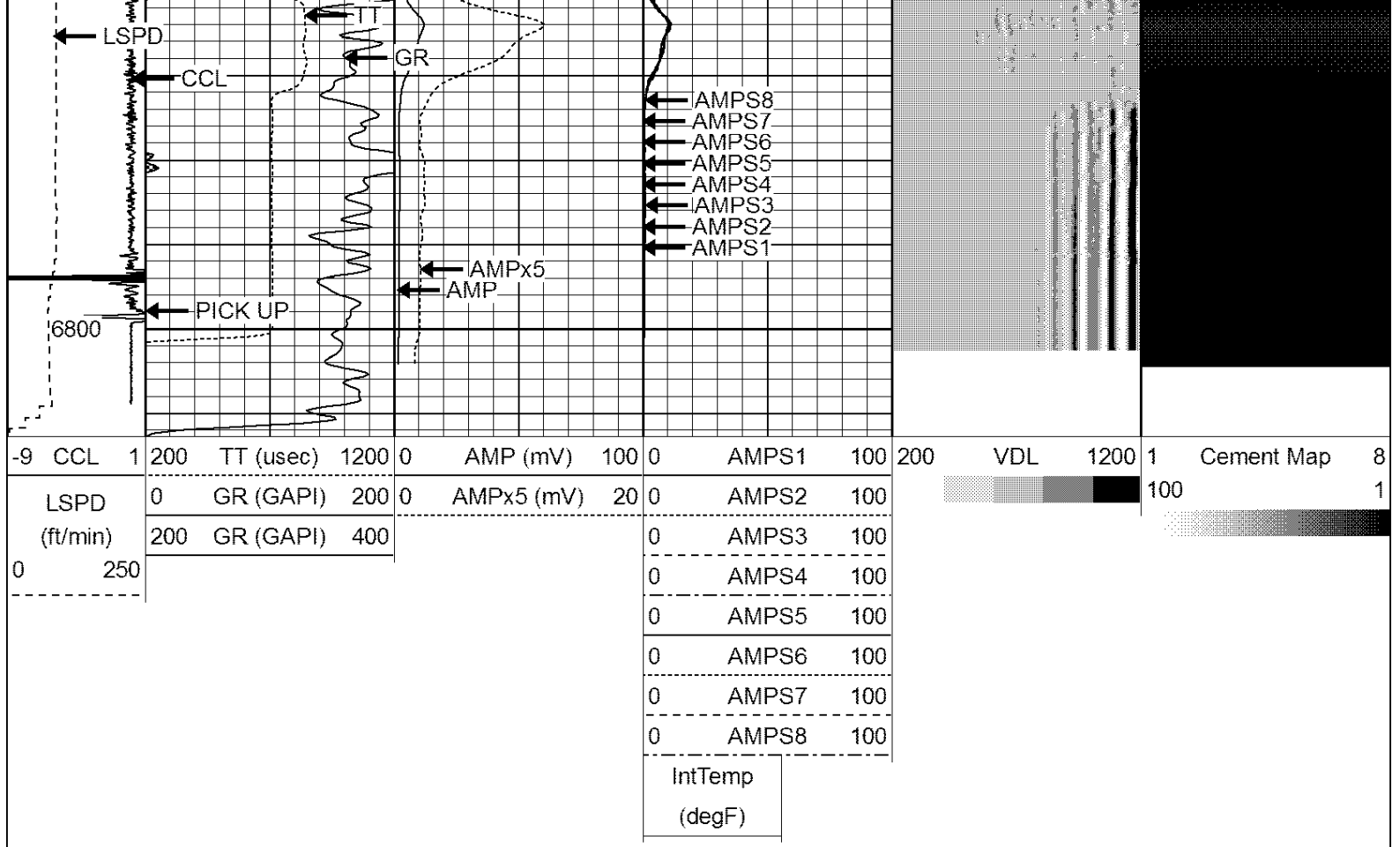












Calibration Report					
Database File:	lhi 14-11.db				
Dataset Pathname:	pass8				
Dataset Creation:	Fri Feb 23 08:45:59 2018 by Log SCH 120126				
Gamma Ray Calibration Report					
Serial Number:	275				
Tool Model:	Probe				
Performed:	Tue Sep 23 07:13:12 2014				
Calibrator Value:	100.0	GAPI			
Background Reading:	35.0	cps			
Calibrator Reading:	160.0	cps			
Sensitivity:	1.0000	GAPI/cps			
Compensated Neutron Calibration Report					
Serial Number:	275				
Tool Model:	Probe_B				
CALIBRATION	Wed Jul 30 08:47:19 2008				
Detector	Readings		Target		Normalization
Short Space	5001.20	cps	0.00	cps	1.0000
Long Space	1029.31	cps	0.00	cps	1.0000
PRE-SURVEY VERIFICATION					
Detector	Readings		Measured		Target
1) Short Space	cps				
Long Space	cps				

	Long Space	cps	pu	pu
2)	Short Space	cps		
	Long Space	cps	pu	
3)	Short Space	cps		
	Long Space	cps	pu	

POST-SURVEY VERIFICATION				
	Detector	Readings	Measured	Target
1)	Short Space	cps		
	Long Space	cps	pu	pu
2)	Short Space	cps		
	Long Space	cps	pu	pu
3)	Short Space	cps		
	Long Space	cps	pu	pu

Segmented Cement Bond Log Calibration Report

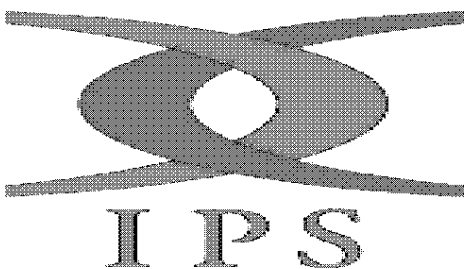
Serial Number:	Base	
Tool Model:	Probe	
Calibration Casing Diameter:	4.500	in
Calibration Depth:	3816.650	ft

Master Calibration, performed Fri Feb 23 08:37:08 2018:						
	Raw (v)		Calibrated (mv)		Results	
	Zero	Cal	Zero	Cal	Gain	Offset
3'	0.004	1.221	2.000	81.196	65.071	1.712
CAL	0.004	1.298				
5'	0.004	0.918	2.000	81.196	86.630	1.676
SUM						
S1	0.004	1.176	0.500	81.196	68.872	0.228
S2	0.005	1.149	0.500	81.196	70.494	0.171
S3	0.004	1.162	0.500	81.196	69.665	0.213
S4	0.004	1.220	0.500	81.196	66.364	0.223
S5	0.004	1.262	0.500	81.196	64.158	0.252
S6	0.004	1.276	0.500	81.196	63.429	0.251
S7	0.004	1.275	0.500	81.196	63.478	0.243
S8	0.004	1.221	0.500	81.196	66.295	0.249

Internal Reference Calibration, performed Tue Jun 05 07:53:42 2012:						
	Raw (v)		Calibrated (v)		Results	
	Zero	Cal	Zero	Cal	Gain	Offset
CAL	0.000	0.000	0.004	1.298	1.000	0.000

Air Zero Calibration, performed Fri Feb 23 07:12:48 2018:			
	Raw (v)		Results
	Zero	Zero	Offset
3'	0.000	0.000	0.000
5'	0.000	0.000	0.000
SUM			
S1	0.000	0.000	0.000
S2	0.000	0.000	0.000
S3	0.000	0.000	0.000

S3	0.000	0.000	0.000
S4	0.000	0.000	0.000
S5	0.000	0.000	0.000
S6	0.000	0.000	0.000
S7	0.000	0.000	0.000
S8	0.000	0.000	0.000



CompanySRC ENERGY INC.

Well LHI 14-11

Field WATTENBURG

County WELD

State CO