

Location:	COLORADO	Slot:	SLOT#01 NORTH PLATTE A11-E14-28HNB (1437FSL & 1385FWL, SEC.21)
Field:	WELD COUNTY	Well:	NORTH PLATTE A11-E14-28HNB
Facility:	SEC.21-T05N-R63W	Wellbore:	NORTH PLATTE A11-E14-28HNB PWB

Plot reference wellpath is NORTH PLATTE A11-E14-28HNB PWP (REV-C.0)		Grid System: NAD83 / Lambert Colorado SP, Northern Zone (501), US feet
True vertical depths are referenced to RIG (17KB) (RKB)		* = Wellpath was transformed from a different geoidic datum
Measured depths are referenced to RIG (17KB) (RKB)		North Reference: True north
RIG (17KB) (RKB) to Mean Sea Level: 4570 feet		Scale: True distance
Mean Sea Level to Ground level (At Slot: SLOTR01 NORTH PLATTE A11-E14-28HNB (1437FSL & 1385FWL, SEC.21)): 0 feet		Depths are in feet
Coordinates are in feet referenced to Slot		Created by: ingmjmr on 2018-01-31
		Database: Denver

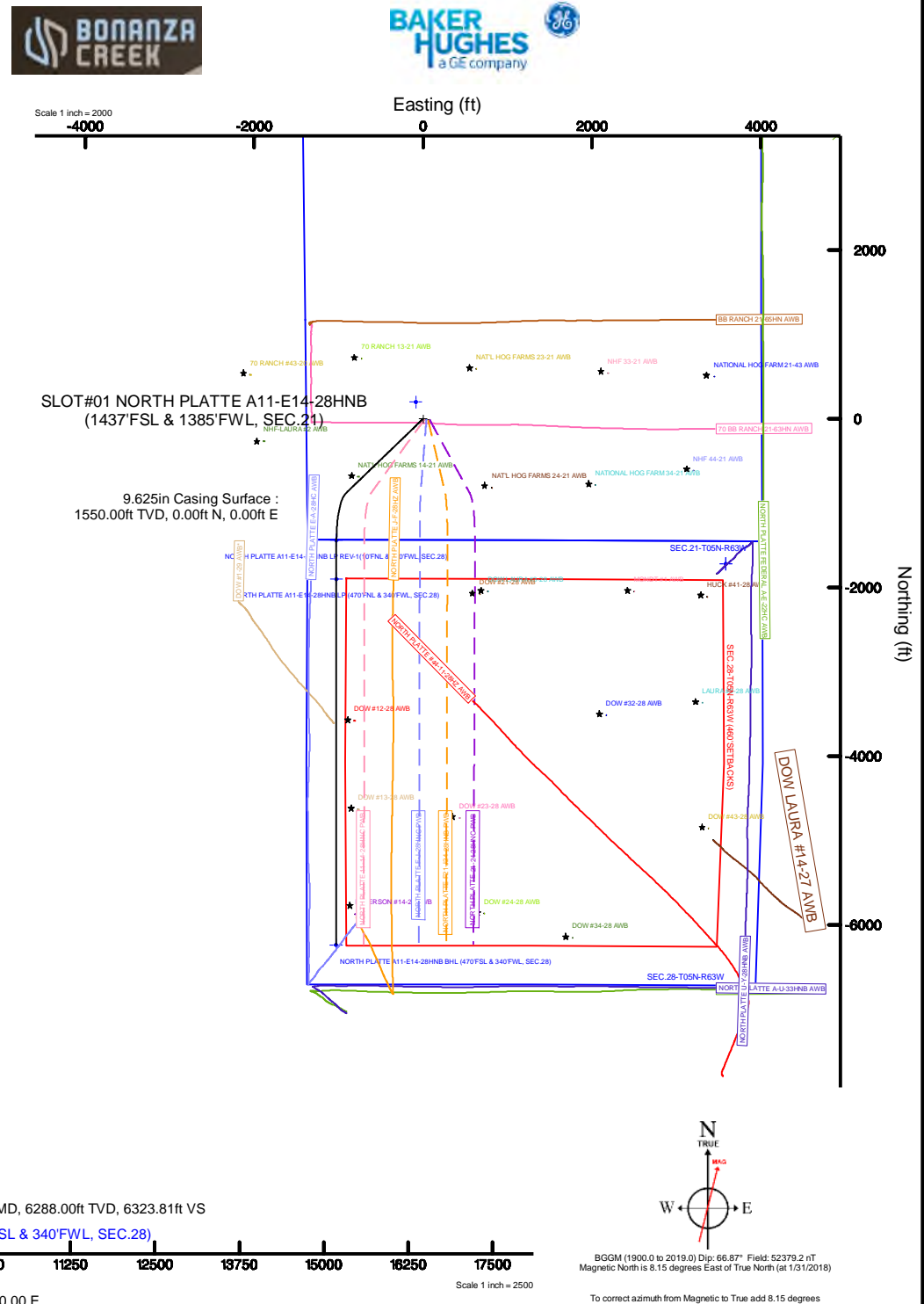
Facility Name				Grid East (US ft)	Grid North (US ft)	Latitude	Longitude
SEC-21-TGSN R63W				3208662.591	1383831.667	40°22'56.021"N	104°28'45.049"W
Site	Local N (ft)	Local E (ft)	Grid East (US ft)	Grid North (US ft)	Latitude	Longitude	
SLOT01 NORTH PLATTE A11-E14-28H#8 (1437FSL & 1385FWL, SEC-21)	-198.57	86.63	3209751.670	1380634.150	40°22'54.059"N	104°28'43.930"W	
RG (1798) (R98) to Ground level (At Site: SLOT01 NORTH PLATTE A11-E14-28H#8 (1437FSL & 1385FWL, SEC-21))						45701	
Mean Sea Level to Ground level (At Site: SLOT01 NORTH PLATTE A11-E14-28H#8 (1437FSL & 1385FWL, SEC-21))						01	
RG (1798) (R98) to Mean Sea Level						45701	

Design Comment	MD (ft)	Inc (°)	Az (°)	TVD (ft)	Local N (ft)	Local E (ft)	DLS (°/100ft)	VS (ft)
Tie On	17.00	0.000	226.021	17.00	0.00	0.00	0.00	0.00
End of Tangent	1800.00	0.000	226.021	1800.00	0.00	0.00	0.00	0.00
End of Build (XS)	2782.97	19.659	226.021	2763.80	-115.96	-120.17	2.00	134.01
End of Tangent (XS)	6073.84	19.659	226.021	5862.84	-884.75	-916.86	0.00	1022.47
End of 3D Arc (XS)	6838.59	90.000	180.060	6288.00	-1441.71	-1026.63	10.00	1589.88
End of Tangent (XS)	11635.98	90.000	180.060	6288.00	-6239.10	-1031.65	0.00	6323.81

Name	Start MD (ft)	End MD (ft)	Interval (ft)	Start TVD (ft)	End TVD (ft)	Start Local N (ft)	Start Local E (ft)	End Local N (ft)	End Local E (ft)	Wellbore
9.625in Casing Surface	17.00	1550.00	1533.00	17.00	1550.00	0.00	0.00	0.00	0.00	NORTH PLATTE A11-E14-28HNB PWB
8.5in Open Hole	1550.00	11635.98	10085.98	1550.00	6288.00	0.00	0.00	-6239.09	-1031.65	NORTH PLATTE A11-E14-28HNB PWB

Start MD (ft)	End MD (ft)	Tool	Model	Log Name/Comment	Wellbore
17.00	1550.00	BHI NavTrak	Custom BHI NavTrak (Standard Rotating+Aval Cor) (Rockies 0.03GI model)		NORTH PLATTE A11 E-14-28HNB PWB
1550.00	11635.98	BHI AutoTrak Curve	Custom BHI AutoTrak Curve (Aval Corr, Short spacing) (Rockies 0.03GI model)		NORTH PLATTE A11 E-14-28HNB PWB

MD (ft)	Inc (°)	Az (°)	TVD (ft)	Local N (ft)	Local E (ft)	Grid East (US ft)	Grid North (US ft)	Latitude	Longitude
11635.98	90.000	180.060	6288.00	-6239.10	-1031.65	3292794.22	1377383.49	40°21'52.406"N	104°26'57.257"W





Planned Wellpath Report

NORTH PLATTE A11-E14-28HNB PWP (REV-C.0)

Page 1 of 8



REFERENCE WELLPATH IDENTIFICATION

Operator	BONANZA CREEK OIL COMPANY	Slot	SLOT#01 NORTH PLATTE A11-E14-28HNB (1437'FSL & 1385'FWL, SEC.21)
Area	COLORADO	Well	NORTH PLATTE A11-E14-28HNB
Field	WELD COUNTY	Wellbore	NORTH PLATTE A11-E14-28HNB PWB
Facility	SEC.21-T05N-R63W		

REPORT SETUP INFORMATION

Projection System	NAD83 / Lambert Colorado SP, Northern Zone (501), US feet	Software System	WellArchitect® 5.0
North Reference	True	User	Ingmjmr
Scale	0.999959	Report Generated	1/31/2018 at 3:30:08 PM
Convergence at slot	0.69° East	Database/Source file	Denver/NORTH_PLATTE_A11-E14-28HNB_PWP__REV-C.0_.xml

WELLPATH LOCATION

	Local coordinates		Grid coordinates		Geographic coordinates	
	North[ft]	East[ft]	Easting[US ft]	Northing[US ft]	Latitude	Longitude
Slot Location	-198.57	86.63	3293751.57	1383634.15	40°22'54.059"N	104°26'43.930"W
Facility Reference Pt			3293662.59	1383831.67	40°22'56.021"N	104°26'45.049"W
Field Reference Pt			3224525.77	1254425.87	40°01'44.400"N	104°41'53.556"W

WELLPATH DATUM

Calculation method	Minimum curvature	RIG (17'KB) (RKB) to Facility Vertical Datum	4570.00ft
Horizontal Reference Pt	Slot	RIG (17'KB) (RKB) to Mean Sea Level	4570.00ft
Vertical Reference Pt	RIG (17'KB) (RKB)	RIG (17'KB) (RKB) to Ground Level at Slot (SLOT#01 NORTH PLATTE A11-E14-28HNB (1437'FSL & 1385'FWL, SEC.21))	4570.00ft
MD Reference Pt	RIG (17'KB) (RKB)	Section Origin	N 0.00, E 0.00 ft
Field Vertical Reference	Mean Sea Level	Section Azimuth	189.39°



Planned Wellpath Report

NORTH PLATTE A11-E14-28HNB PWP (REV-C.0)

Page 2 of 8



REFERENCE WELLPATH IDENTIFICATION			
Operator	BONANZA CREEK OIL COMPANY	Slot	SLOT#01 NORTH PLATTE A11-E14-28HNB (1437'FSL & 1385'FWL, SEC.21)
Area	COLORADO	Well	NORTH PLATTE A11-E14-28HNB
Field	WELD COUNTY	Wellbore	NORTH PLATTE A11-E14-28HNB PWB
Facility	SEC.21-T05N-R63W		

WELLPATH DATA (123 stations) † = interpolated/extrapolated station										
MD [ft]	Inclination [°]	Azimuth [°]	TVD [ft]	Vert Sect [ft]	North [ft]	East [ft]	Latitude	Longitude	DLS [°/100ft]	Comments
0.00†	0.000	226.021	0.00	0.00	0.00	0.00	40°22'54.059"N	104°26'43.930"W	0.00	
17.00	0.000	226.021	17.00	0.00	0.00	0.00	40°22'54.059"N	104°26'43.930"W	0.00	Tie On
117.00†	0.000	226.021	117.00	0.00	0.00	0.00	40°22'54.059"N	104°26'43.930"W	0.00	
217.00†	0.000	226.021	217.00	0.00	0.00	0.00	40°22'54.059"N	104°26'43.930"W	0.00	
317.00†	0.000	226.021	317.00	0.00	0.00	0.00	40°22'54.059"N	104°26'43.930"W	0.00	
417.00†	0.000	226.021	417.00	0.00	0.00	0.00	40°22'54.059"N	104°26'43.930"W	0.00	
517.00†	0.000	226.021	517.00	0.00	0.00	0.00	40°22'54.059"N	104°26'43.930"W	0.00	
617.00†	0.000	226.021	617.00	0.00	0.00	0.00	40°22'54.059"N	104°26'43.930"W	0.00	
717.00†	0.000	226.021	717.00	0.00	0.00	0.00	40°22'54.059"N	104°26'43.930"W	0.00	
817.00†	0.000	226.021	817.00	0.00	0.00	0.00	40°22'54.059"N	104°26'43.930"W	0.00	
917.00†	0.000	226.021	917.00	0.00	0.00	0.00	40°22'54.059"N	104°26'43.930"W	0.00	
1017.00†	0.000	226.021	1017.00	0.00	0.00	0.00	40°22'54.059"N	104°26'43.930"W	0.00	
1117.00†	0.000	226.021	1117.00	0.00	0.00	0.00	40°22'54.059"N	104°26'43.930"W	0.00	
1217.00†	0.000	226.021	1217.00	0.00	0.00	0.00	40°22'54.059"N	104°26'43.930"W	0.00	
1317.00†	0.000	226.021	1317.00	0.00	0.00	0.00	40°22'54.059"N	104°26'43.930"W	0.00	
1417.00†	0.000	226.021	1417.00	0.00	0.00	0.00	40°22'54.059"N	104°26'43.930"W	0.00	
1517.00†	0.000	226.021	1517.00	0.00	0.00	0.00	40°22'54.059"N	104°26'43.930"W	0.00	
1617.00†	0.000	226.021	1617.00	0.00	0.00	0.00	40°22'54.059"N	104°26'43.930"W	0.00	
1717.00†	0.000	226.021	1717.00	0.00	0.00	0.00	40°22'54.059"N	104°26'43.930"W	0.00	
1800.00	0.000	226.021	1800.00	0.00	0.00	0.00	40°22'54.059"N	104°26'43.930"W	0.00	End of Tangent
1817.00†	0.340	226.021	1817.00	0.04	-0.04	-0.04	40°22'54.058"N	104°26'43.930"W	2.00	
1917.00†	2.340	226.021	1916.97	1.92	-1.66	-1.72	40°22'54.042"N	104°26'43.952"W	2.00	
2017.00†	4.340	226.021	2016.79	6.59	-5.70	-5.91	40°22'54.002"N	104°26'44.006"W	2.00	
2117.00†	6.340	226.021	2116.35	14.06	-12.17	-12.61	40°22'53.939"N	104°26'44.093"W	2.00	
2217.00†	8.340	226.021	2215.53	24.31	-21.04	-21.80	40°22'53.851"N	104°26'44.211"W	2.00	
2317.00†	10.340	226.021	2314.20	37.34	-32.31	-33.48	40°22'53.740"N	104°26'44.362"W	2.00	
2417.00†	12.340	226.021	2412.24	53.11	-45.96	-47.63	40°22'53.605"N	104°26'44.545"W	2.00	
2517.00†	14.340	226.021	2509.54	71.63	-61.98	-64.23	40°22'53.446"N	104°26'44.760"W	2.00	
2617.00†	16.340	226.021	2605.97	92.86	-80.35	-83.27	40°22'53.265"N	104°26'45.006"W	2.00	
2717.00†	18.340	226.021	2701.42	116.77	-101.04	-104.71	40°22'53.060"N	104°26'45.283"W	2.00	



Planned Wellpath Report

NORTH PLATTE A11-E14-28HNB PWP (REV-C.0)

Page 3 of 8



REFERENCE WELLPATH IDENTIFICATION			
Operator	BONANZA CREEK OIL COMPANY	Slot	SLOT#01 NORTH PLATTE A11-E14-28HNB (1437'FSL & 1385'FWL, SEC.21)
Area	COLORADO	Well	NORTH PLATTE A11-E14-28HNB
Field	WELD COUNTY	Wellbore	NORTH PLATTE A11-E14-28HNB PWB
Facility	SEC.21-T05N-R63W		

WELLPATH DATA (123 stations) † = interpolated/extrapolated station										
MD [ft]	Inclination [°]	Azimuth [°]	TVD [ft]	Vert Sect [ft]	North [ft]	East [ft]	Latitude	Longitude	DLS [°/100ft]	Comments
2782.97	19.659	226.021	2763.80	134.01	-115.96	-120.17	40°22'52.913"N	104°26'45.482"W	2.00	End of Build (XS)
2817.00†	19.659	226.021	2795.84	143.20	-123.91	-128.40	40°22'52.834"N	104°26'45.589"W	0.00	
2917.00†	19.659	226.021	2890.01	170.19	-147.27	-152.61	40°22'52.604"N	104°26'45.902"W	0.00	
3017.00†	19.659	226.021	2984.18	197.19	-170.63	-176.82	40°22'52.373"N	104°26'46.214"W	0.00	
3117.00†	19.659	226.021	3078.35	224.19	-193.99	-201.03	40°22'52.142"N	104°26'46.527"W	0.00	
3217.00†	19.659	226.021	3172.53	251.19	-217.35	-225.24	40°22'51.911"N	104°26'46.840"W	0.00	
3317.00†	19.659	226.021	3266.70	278.18	-240.71	-249.45	40°22'51.680"N	104°26'47.153"W	0.00	
3417.00†	19.659	226.021	3360.87	305.18	-264.08	-273.66	40°22'51.449"N	104°26'47.466"W	0.00	
3517.00†	19.659	226.021	3455.04	332.18	-287.44	-297.87	40°22'51.218"N	104°26'47.779"W	0.00	
3617.00†	19.659	226.021	3549.21	359.18	-310.80	-322.08	40°22'50.988"N	104°26'48.091"W	0.00	
3717.00†	19.659	226.021	3643.38	386.18	-334.16	-346.29	40°22'50.757"N	104°26'48.404"W	0.00	
3817.00†	19.659	226.021	3737.55	413.17	-357.52	-370.50	40°22'50.526"N	104°26'48.717"W	0.00	
3917.00†	19.659	226.021	3831.72	440.17	-380.88	-394.71	40°22'50.295"N	104°26'49.030"W	0.00	
4017.00†	19.659	226.021	3925.89	467.17	-404.24	-418.92	40°22'50.064"N	104°26'49.343"W	0.00	
4117.00†	19.659	226.021	4020.06	494.17	-427.61	-443.12	40°22'49.833"N	104°26'49.655"W	0.00	
4217.00†	19.659	226.021	4114.23	521.17	-450.97	-467.33	40°22'49.602"N	104°26'49.968"W	0.00	
4317.00†	19.659	226.021	4208.40	548.16	-474.33	-491.54	40°22'49.372"N	104°26'50.281"W	0.00	
4417.00†	19.659	226.021	4302.58	575.16	-497.69	-515.75	40°22'49.141"N	104°26'50.594"W	0.00	
4517.00†	19.659	226.021	4396.75	602.16	-521.05	-539.96	40°22'48.910"N	104°26'50.907"W	0.00	
4617.00†	19.659	226.021	4490.92	629.16	-544.41	-564.17	40°22'48.679"N	104°26'51.220"W	0.00	
4717.00†	19.659	226.021	4585.09	656.16	-567.78	-588.38	40°22'48.448"N	104°26'51.532"W	0.00	
4817.00†	19.659	226.021	4679.26	683.15	-591.14	-612.59	40°22'48.217"N	104°26'51.845"W	0.00	
4917.00†	19.659	226.021	4773.43	710.15	-614.50	-636.80	40°22'47.986"N	104°26'52.158"W	0.00	
5017.00†	19.659	226.021	4867.60	737.15	-637.86	-661.01	40°22'47.756"N	104°26'52.471"W	0.00	
5117.00†	19.659	226.021	4961.77	764.15	-661.22	-685.22	40°22'47.525"N	104°26'52.784"W	0.00	
5217.00†	19.659	226.021	5055.94	791.15	-684.58	-709.43	40°22'47.294"N	104°26'53.096"W	0.00	
5317.00†	19.659	226.021	5150.11	818.14	-707.94	-733.64	40°22'47.063"N	104°26'53.409"W	0.00	
5417.00†	19.659	226.021	5244.28	845.14	-731.31	-757.84	40°22'46.832"N	104°26'53.722"W	0.00	
5517.00†	19.659	226.021	5338.46	872.14	-754.67	-782.05	40°22'46.601"N	104°26'54.035"W	0.00	
5617.00†	19.659	226.021	5432.63	899.14	-778.03	-806.26	40°22'46.370"N	104°26'54.348"W	0.00	



Planned Wellpath Report

NORTH PLATTE A11-E14-28HNB PWP (REV-C.0)

Page 4 of 8



REFERENCE WELLPATH IDENTIFICATION			
Operator	BONANZA CREEK OIL COMPANY	Slot	SLOT#01 NORTH PLATTE A11-E14-28HNB (1437'FSL & 1385'FWL, SEC.21)
Area	COLORADO	Well	NORTH PLATTE A11-E14-28HNB
Field	WELD COUNTY	Wellbore	NORTH PLATTE A11-E14-28HNB PWB
Facility	SEC.21-T05N-R63W		

WELLPATH DATA (123 stations) † = interpolated/extrapolated station										
MD [ft]	Inclination [°]	Azimuth [°]	TVD [ft]	Vert Sect [ft]	North [ft]	East [ft]	Latitude	Longitude	DLS [°/100ft]	Comments
5717.00†	19.659	226.021	5526.80	926.13	-801.39	-830.47	40°22'46.140"N	104°26'54.661"W	0.00	
5817.00†	19.659	226.021	5620.97	953.13	-824.75	-854.68	40°22'45.909"N	104°26'54.973"W	0.00	
5917.00†	19.659	226.021	5715.14	980.13	-848.11	-878.89	40°22'45.678"N	104°26'55.286"W	0.00	
6017.00†	19.659	226.021	5809.31	1007.13	-871.47	-903.10	40°22'45.447"N	104°26'55.599"W	0.00	
6073.84	19.659	226.021	5862.84	1022.47	-884.75	-916.86	40°22'45.316"N	104°26'55.777"W	0.00	End of Tangent (XS)
6117.00†	22.781	217.759	5903.07	1035.66	-896.41	-927.21	40°22'45.201"N	104°26'55.910"W	10.00	
6217.00†	31.079	205.279	5992.22	1077.63	-935.15	-950.14	40°22'44.818"N	104°26'56.207"W	10.00	
6317.00†	40.102	197.815	6073.50	1134.46	-989.29	-971.07	40°22'44.283"N	104°26'56.477"W	10.00	
6417.00†	49.451	192.753	6144.43	1204.42	-1057.18	-989.36	40°22'43.612"N	104°26'56.713"W	10.00	
6517.00†	58.966	188.949	6202.86	1285.40	-1136.76	-1004.45	40°22'42.825"N	104°26'56.908"W	10.00	
6617.00†	68.573	185.844	6247.01	1374.92	-1225.61	-1015.88	40°22'41.948"N	104°26'57.056"W	10.00	
6717.00†	78.229	183.128	6275.55	1470.27	-1321.03	-1023.31	40°22'41.005"N	104°26'57.152"W	10.00	
6817.00†	87.909	180.597	6287.61	1568.56	-1420.12	-1026.51	40°22'40.025"N	104°26'57.193"W	10.00	
6838.59	90.000	180.060	6288.00†	1589.88	-1441.71	-1026.63	40°22'39.812"N	104°26'57.195"W	10.00	End of 3D Arc (XS)
6917.00†	90.000	180.060	6288.00	1667.25	-1520.12	-1026.72	40°22'39.037"N	104°26'57.196"W	0.00	
7017.00†	90.000	180.060	6288.00	1765.93	-1620.12	-1026.82	40°22'38.049"N	104°26'57.197"W	0.00	
7117.00†	90.000	180.060	6288.00	1864.60	-1720.12	-1026.92	40°22'37.061"N	104°26'57.198"W	0.00	
7217.00†	90.000	180.060	6288.00	1963.28	-1820.12	-1027.03	40°22'36.073"N	104°26'57.200"W	0.00	
7317.00†	90.000	180.060	6288.00	2061.96	-1920.12	-1027.13	40°22'35.085"N	104°26'57.201"W	0.00	
7417.00†	90.000	180.060	6288.00	2160.63	-2020.12	-1027.24	40°22'34.096"N	104°26'57.202"W	0.00	
7517.00†	90.000	180.060	6288.00	2259.31	-2120.12	-1027.34	40°22'33.108"N	104°26'57.204"W	0.00	
7617.00†	90.000	180.060	6288.00	2357.99	-2220.12	-1027.45	40°22'32.120"N	104°26'57.205"W	0.00	
7717.00†	90.000	180.060	6288.00	2456.67	-2320.12	-1027.55	40°22'31.132"N	104°26'57.206"W	0.00	
7817.00†	90.000	180.060	6288.00	2555.34	-2420.12	-1027.66	40°22'30.144"N	104°26'57.208"W	0.00	
7917.00†	90.000	180.060	6288.00	2654.02	-2520.12	-1027.76	40°22'29.156"N	104°26'57.209"W	0.00	
8017.00†	90.000	180.060	6288.00	2752.70	-2620.12	-1027.87	40°22'28.167"N	104°26'57.210"W	0.00	
8117.00†	90.000	180.060	6288.00	2851.38	-2720.12	-1027.97	40°22'27.179"N	104°26'57.211"W	0.00	
8217.00†	90.000	180.060	6288.00	2950.05	-2820.12	-1028.07	40°22'26.191"N	104°26'57.213"W	0.00	
8317.00†	90.000	180.060	6288.00	3048.73	-2920.12	-1028.18	40°22'25.203"N	104°26'57.214"W	0.00	
8417.00†	90.000	180.060	6288.00	3147.41	-3020.12	-1028.28	40°22'24.215"N	104°26'57.215"W	0.00	



Planned Wellpath Report

NORTH PLATTE A11-E14-28HNB PWP (REV-C.0)

Page 5 of 8



REFERENCE WELLPATH IDENTIFICATION			
Operator	BONANZA CREEK OIL COMPANY	Slot	SLOT#01 NORTH PLATTE A11-E14-28HNB (1437'FSL & 1385'FWL, SEC.21)
Area	COLORADO	Well	NORTH PLATTE A11-E14-28HNB
Field	WELD COUNTY	Wellbore	NORTH PLATTE A11-E14-28HNB PWB
Facility	SEC.21-T05N-R63W		

WELLPATH DATA (123 stations) † = interpolated/extrapolated station										
MD [ft]	Inclination [°]	Azimuth [°]	TVD [ft]	Vert Sect [ft]	North [ft]	East [ft]	Latitude	Longitude	DLS [°/100ft]	Comments
8517.00†	90.000	180.060	6288.00	3246.09	-3120.12	-1028.39	40°22'23.227"N	104°26'57.217"W	0.00	
8617.00†	90.000	180.060	6288.00	3344.76	-3220.12	-1028.49	40°22'22.238"N	104°26'57.218"W	0.00	
8717.00†	90.000	180.060	6288.00	3443.44	-3320.12	-1028.60	40°22'21.250"N	104°26'57.219"W	0.00	
8817.00†	90.000	180.060	6288.00	3542.12	-3420.12	-1028.70	40°22'20.262"N	104°26'57.221"W	0.00	
8917.00†	90.000	180.060	6288.00	3640.79	-3520.12	-1028.81	40°22'19.274"N	104°26'57.222"W	0.00	
9017.00†	90.000	180.060	6288.00	3739.47	-3620.12	-1028.91	40°22'18.286"N	104°26'57.223"W	0.00	
9117.00†	90.000	180.060	6288.00	3838.15	-3720.12	-1029.02	40°22'17.298"N	104°26'57.224"W	0.00	
9217.00†	90.000	180.060	6288.00	3936.83	-3820.12	-1029.12	40°22'16.309"N	104°26'57.226"W	0.00	
9317.00†	90.000	180.060	6288.00	4035.50	-3920.12	-1029.23	40°22'15.321"N	104°26'57.227"W	0.00	
9417.00†	90.000	180.060	6288.00	4134.18	-4020.12	-1029.33	40°22'14.333"N	104°26'57.228"W	0.00	
9517.00†	90.000	180.060	6288.00	4232.86	-4120.12	-1029.43	40°22'13.345"N	104°26'57.230"W	0.00	
9617.00†	90.000	180.060	6288.00	4331.54	-4220.12	-1029.54	40°22'12.357"N	104°26'57.231"W	0.00	
9717.00†	90.000	180.060	6288.00	4430.21	-4320.12	-1029.64	40°22'11.369"N	104°26'57.232"W	0.00	
9817.00†	90.000	180.060	6288.00	4528.89	-4420.11	-1029.75	40°22'10.380"N	104°26'57.233"W	0.00	
9917.00†	90.000	180.060	6288.00	4627.57	-4520.11	-1029.85	40°22'09.392"N	104°26'57.235"W	0.00	
10017.00†	90.000	180.060	6288.00	4726.25	-4620.11	-1029.96	40°22'08.404"N	104°26'57.236"W	0.00	
10117.00†	90.000	180.060	6288.00	4824.92	-4720.11	-1030.06	40°22'07.416"N	104°26'57.237"W	0.00	
10217.00†	90.000	180.060	6288.00	4923.60	-4820.11	-1030.17	40°22'06.428"N	104°26'57.239"W	0.00	
10317.00†	90.000	180.060	6288.00	5022.28	-4920.11	-1030.27	40°22'05.440"N	104°26'57.240"W	0.00	
10417.00†	90.000	180.060	6288.00	5120.95	-5020.11	-1030.38	40°22'04.451"N	104°26'57.241"W	0.00	
10517.00†	90.000	180.060	6288.00	5219.63	-5120.11	-1030.48	40°22'03.463"N	104°26'57.243"W	0.00	
10617.00†	90.000	180.060	6288.00	5318.31	-5220.11	-1030.58	40°22'02.475"N	104°26'57.244"W	0.00	
10717.00†	90.000	180.060	6288.00	5416.99	-5320.11	-1030.69	40°22'01.487"N	104°26'57.245"W	0.00	
10817.00†	90.000	180.060	6288.00	5515.66	-5420.11	-1030.79	40°22'00.499"N	104°26'57.246"W	0.00	
10917.00†	90.000	180.060	6288.00	5614.34	-5520.11	-1030.90	40°21'59.511"N	104°26'57.248"W	0.00	
11017.00†	90.000	180.060	6288.00	5713.02	-5620.11	-1031.00	40°21'58.522"N	104°26'57.249"W	0.00	
11117.00†	90.000	180.060	6288.00	5811.70	-5720.11	-1031.11	40°21'57.534"N	104°26'57.250"W	0.00	
11217.00†	90.000	180.060	6288.00	5910.37	-5820.11	-1031.21	40°21'56.546"N	104°26'57.252"W	0.00	
11317.00†	90.000	180.060	6288.00	6009.05	-5920.11	-1031.32	40°21'55.558"N	104°26'57.253"W	0.00	
11417.00†	90.000	180.060	6288.00	6107.73	-6020.11	-1031.42	40°21'54.570"N	104°26'57.254"W	0.00	



Planned Wellpath Report

NORTH PLATTE A11-E14-28HNB PWP (REV-C.0)

Page 6 of 8



REFERENCE WELLPATH IDENTIFICATION			
Operator	BONANZA CREEK OIL COMPANY	Slot	SLOT#01 NORTH PLATTE A11-E14-28HNB (1437'FSL & 1385'FWL, SEC.21)
Area	COLORADO	Well	NORTH PLATTE A11-E14-28HNB
Field	WELD COUNTY	Wellbore	NORTH PLATTE A11-E14-28HNB PWB
Facility	SEC.21-T05N-R63W		

WELLPATH DATA (123 stations) † = interpolated/extrapolated station										
MD [ft]	Inclination [°]	Azimuth [°]	TVD [ft]	Vert Sect [ft]	North [ft]	East [ft]	Latitude	Longitude	DLS [°/100ft]	Comments
11517.00†	90.000	180.060	6288.00	6206.41	-6120.11	-1031.53	40°21'53.582"N	104°26'57.256"W	0.00	
11617.00†	90.000	180.060	6288.00	6305.08	-6220.11	-1031.63	40°21'52.593"N	104°26'57.257"W	0.00	
11635.98	90.000	180.060	6288.00 ²	6323.81	-6239.10	-1031.65	40°21'52.406"N	104°26'57.257"W	0.00	End of Tangent (XS)

HOLE & CASING SECTIONS									
- Ref Wellbore: NORTH PLATTE A11-E14-28HNB PWB					Ref Wellpath: NORTH PLATTE A11-E14-28HNB PWP (REV-C.0)				
String/Diameter	Start MD [ft]	End MD [ft]	Interval [ft]	Start TVD [ft]	End TVD [ft]	Start N/S [ft]	Start E/W [ft]	End N/S [ft]	End E/W [ft]
9.625in Casing Surface	17.00	1550.00	1533.00	17.00	1550.00	0.00	0.00	0.00	0.00
8.5in Open Hole	1550.00	11635.98	10085.98	1550.00	6288.00	0.00	0.00	-6239.09	-1031.65



Planned Wellpath Report

NORTH PLATTE A11-E14-28HNB PWP (REV-C.0)

Page 7 of 8



REFERENCE WELLPATH IDENTIFICATION			
Operator	BONANZA CREEK OIL COMPANY	Slot	SLOT#01 NORTH PLATTE A11-E14-28HNB (1437'FSL & 1385'FWL, SEC.21)
Area	COLORADO	Well	NORTH PLATTE A11-E14-28HNB
Field	WELD COUNTY	Wellbore	NORTH PLATTE A11-E14-28HNB PWB
Facility	SEC.21-T05N-R63W		

TARGETS									
Name	MD [ft]	TVD [ft]	North [ft]	East [ft]	Grid East [US ft]	Grid North [US ft]	Latitude	Longitude	Shape
SEC.21-T05N-R63W		-8.00	198.57	-86.63	3293662.59	1383831.67	40°22'56.021"N	104°26'45.049"W	polygon
SEC.28-T05N-R63W		-8.00	-1721.09	3587.16	3297358.79	1381955.91	40°22'37.049"N	104°25'57.580"W	polygon
2) NORTH PLATTE A11-E14-28HNB BHL (470'FSL & 340'FWL, SEC.28)	11635.98	6288.00	-6239.10	-1031.65	3292794.22	1377383.49	40°21'52.406"N	104°26'57.257"W	point
NORTH PLATTE A11-E14-28HNB LP (470'FNL & 340'FWL, SEC.28)		6288.00	-1901.71	-1026.64	3292747.66	1381720.45	40°22'35.267"N	104°26'57.195"W	point
1) NORTH PLATTE A11-E14-28HNB LP REV-1(10'FNL & 340'FWL, SEC.28)	6838.59	6288.00	-1441.71	-1026.63	3292742.20	1382180.40	40°22'39.812"N	104°26'57.195"W	point
SEC.28-T05N-R63W 460'SETBACKS		6425.00	-1721.09	3587.16	3297358.79	1381955.91	40°22'37.049"N	104°25'57.580"W	polygon

SURVEY PROGRAM - Ref Wellbore: NORTH PLATTE A11-E14-28HNB PWB Ref Wellpath: NORTH PLATTE A11-E14-28HNB PWP (REV-C.0)				
Start MD [ft]	End MD [ft]	Positional Uncertainty Model	Log Name/Comment	Wellbore
17.00	1550.00	Custom BHI NaviTrak (Standard Rotating+Axial Corr) (Rockies 0.03Gt model)		NORTH PLATTE A11-E14-28HNB PWB
1550.00	11635.98	Custom BHI AutoTrak Curve (Axial Corr, Short spacing) (Rockies 0.03Gt model)		NORTH PLATTE A11-E14-28HNB PWB



Planned Wellpath Report

NORTH PLATTE A11-E14-28HNB PWP (REV-C.0)

Page 8 of 8



REFERENCE WELLPATH IDENTIFICATION			
Operator	BONANZA CREEK OIL COMPANY	Slot	SLOT#01 NORTH PLATTE A11-E14-28HNB (1437'FSL & 1385'FWL, SEC.21)
Area	COLORADO	Well	NORTH PLATTE A11-E14-28HNB
Field	WELD COUNTY	Wellbore	NORTH PLATTE A11-E14-28HNB PWB
Facility	SEC.21-T05N-R63W		

DESIGN COMMENTS				
MD [ft]	Inclination [°]	Azimuth [°]	TVD [ft]	Comment
17.00	0.000	226.021	17.00	Tie On
1800.00	0.000	226.021	1800.00	End of Tangent
2782.97	19.659	226.021	2763.80	End of Build (XS)
6073.84	19.659	226.021	5862.84	End of Tangent (XS)
6838.59	90.000	180.060	6288.00	End of 3D Arc (XS)
11635.98	90.000	180.060	6288.00	End of Tangent (XS)