

SRC ENERGY

WELD COUNTY (NAD83, TRUE NORTH)

5N-66W-07 BOST FARM 5-7 PAD

BOST FARM 41C-8-L

Wellbore #1

Plan: Design #1

Standard Planning Report

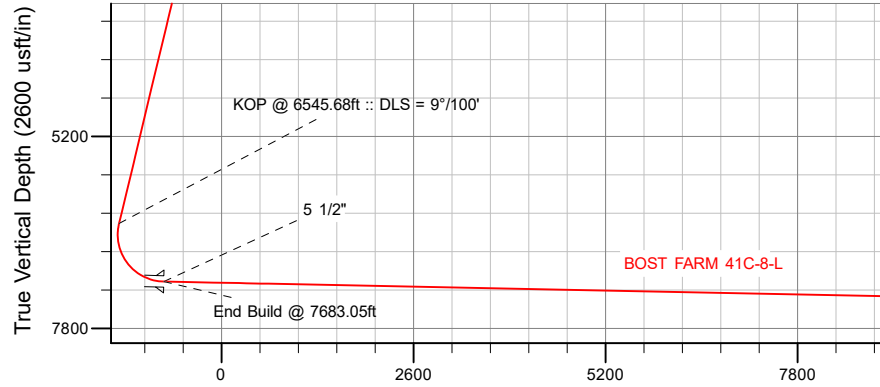
28 December, 2017

Project: WELD COUNTY (NAD83, TRUE NORTH)
Site: 5N-66W-07 BOST FARM 5-7 PAD
Well: BOST FARM 41C-8-L
Wellbore: Wellbore #1
Design: Design #1

SRC ENERGY

CASING DETAILS

TVD	MD	Name	Size
1750.00	1780.21	9 5/8"	9-5/8
7167.00	7683.05	5 1/2"	5-1/2



Vertical Section at 89.03° (2600 usft/in)

West(-)/East(+) (1600 usft/in)

SECTION DETAILS

Sec	MD	Inc	Azi	TVD	+N/-S	+E/-W	Dleg	TFace	VSec	Target
1	0.00	0.00	0.00	0.00	0.00	0.00	0.00	0.00	0.00	
2	250.00	0.00	0.00	250.00	0.00	0.00	0.00	0.00	0.00	
3	930.00	13.60	276.00	923.63	8.40	-79.89	2.00	276.00	-79.73	
4	6545.68	13.60	276.00	6381.85	146.42	-1393.13	0.00	0.00	-1390.45	
5	7683.05	88.84	90.05	7167.00	165.13	-787.06	9.00	173.91	-784.14	
6	17640.78	88.84	90.05	7369.00	155.80	9168.62	0.00	0.00	9169.94	BOST FARM 41C-8-L_BHL

WELLBORE TARGET DETAILS (LAT/LONG)

Name	TVD	+N/-S	+E/-W	Latitude	Longitude
BOST FARM 41C-8-L_SHL	0.00	0.00	0.00	40.417701	-104.829011
BOST FARM 41C-8-L_BHL	7369.00	155.80	9168.62	40.418124	-104.796082

WELL DETAILS: BOST FARM 41C-8-L

GL = 4881'

RKB = 20' @ 4901.00usft (PD 462)

Plan: Design #1 (BOST FARM 41C-8-L/Wellbore #1)

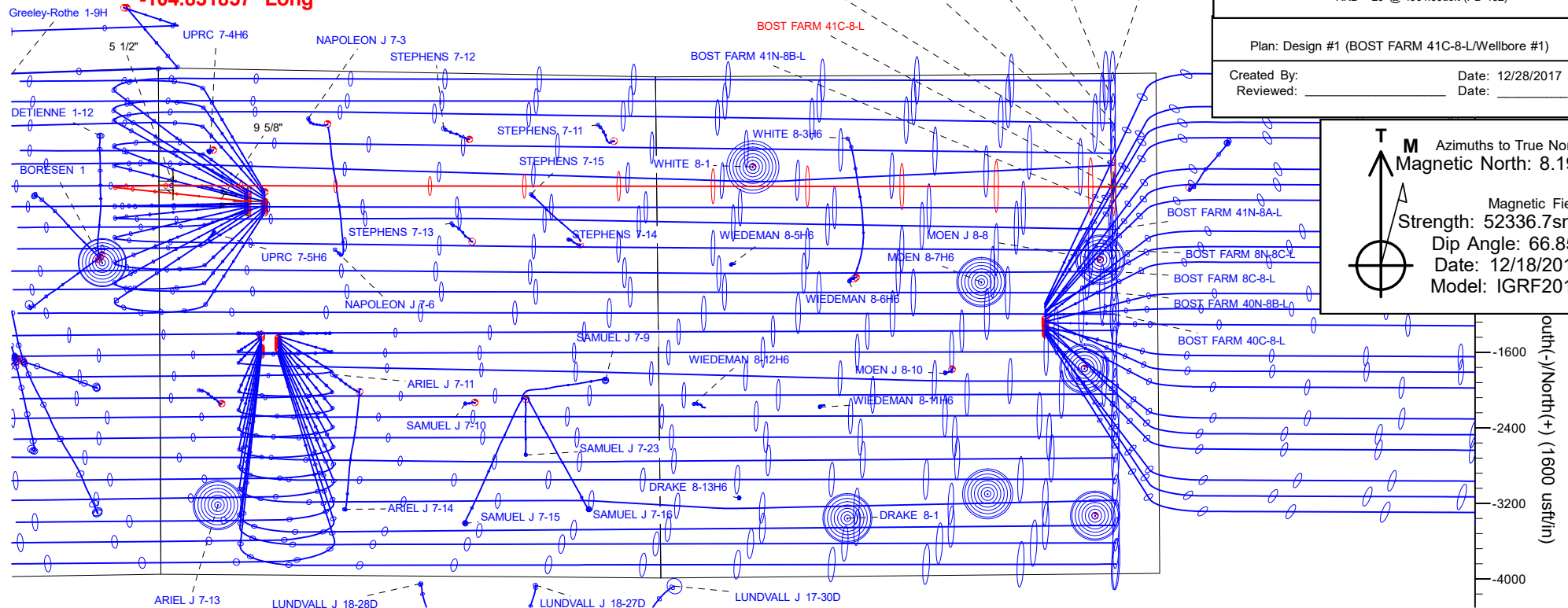
Created By: _____ Date: 12/28/2017
Reviewed: _____ Date: _____

T Azimuths to True North
M Magnetic North: 8.19°
Magnetic Field
Strength: 52336.7snT
Dip Angle: 66.85°
Date: 12/18/2017
Model: IGRF2015

SHL
1397' FNL
940' FWL

LP
1241' FNL
150' FWL
40.418799° Lat
-104.831857° Long

BHL
1199' FNL
460' FEL



Hewlett-Packard

Planning Report

Database:	EDM 5000.14 Single User Db	Local Co-ordinate Reference:	Well BOST FARM 41C-8-L
Company:	SRC ENERGY	TVD Reference:	RKB = 20' @ 4901.00usft (PD 462)
Project:	WELD COUNTY (NAD83, TRUE NORTH)	MD Reference:	RKB = 20' @ 4901.00usft (PD 462)
Site:	5N-66W-07 BOST FARM 5-7 PAD	North Reference:	True
Well:	BOST FARM 41C-8-L	Survey Calculation Method:	Minimum Curvature
Wellbore:	Wellbore #1		
Design:	Design #1		

Project	WELD COUNTY (NAD83, TRUE NORTH)		
Map System:	US State Plane 1983	System Datum:	Mean Sea Level
Geo Datum:	North American Datum 1983		
Map Zone:	Colorado Northern Zone		

Site	5N-66W-07 BOST FARM 5-7 PAD			
Site Position:		Northing:	1,395,815.76 usft	Latitude: 40.417972
From:	Lat/Long	Easting:	3,187,006.76 usft	Longitude: -104.828362
Position Uncertainty:	0.00 usft	Slot Radius:	13-3/16 "	Grid Convergence: 0.43 °

Well	BOST FARM 41C-8-L			
Well Position	+N/-S	-98.73 usft	Northing:	1,395,715.67 usft
	+E/-W	-180.71 usft	Easting:	3,186,826.81 usft
Position Uncertainty		3.28 usft	Wellhead Elevation:	Ground Level: 4,881.00 usft

Wellbore	Wellbore #1				
Magnetics	Model Name	Sample Date	Declination (°)	Dip Angle (°)	Field Strength (nT)
	IGRF2015	12/18/2017	8.19	66.85	52,336.72995975

Design	Design #1			
Audit Notes:				
Version:	Phase:	PLAN	Tie On Depth:	0.00
Vertical Section:	Depth From (TVD) (usft)	+N/-S (usft)	+E/-W (usft)	Direction (°)
	0.00	0.00	0.00	89.03

Plan Survey Tool Program	Date	12/28/2017		
Depth From (usft)	Depth To (usft)	Survey (Wellbore)	Tool Name	Remarks
1	0.00	1,750.00	Design #1 (Wellbore #1)	SRC Energy_ISCWSA REV 2 Fixed:v2:crustal field declinatio
2	1,750.00	17,640.78	Design #1 (Wellbore #1)	SRC Energy_ISCWSA REV 2 Fixed:v2:crustal field declinatio

Plan Sections										
Measured Depth (usft)	Inclination (°)	Azimuth (°)	Vertical Depth (usft)	+N/-S (usft)	+E/-W (usft)	Dogleg Rate (°/100usft)	Build Rate (°/100usft)	Turn Rate (°/100usft)	TFO (°)	Target
0.00	0.00	0.00	0.00	0.00	0.00	0.00	0.00	0.00	0.00	
250.00	0.00	0.00	250.00	0.00	0.00	0.00	0.00	0.00	0.00	
930.00	13.60	276.00	923.63	8.40	-79.89	2.00	2.00	0.00	276.00	
6,545.68	13.60	276.00	6,381.85	146.42	-1,393.13	0.00	0.00	0.00	0.00	
7,683.05	88.84	90.05	7,167.00	165.13	-787.06	9.00	6.62	15.30	173.91	
17,640.78	88.84	90.05	7,369.00	155.80	9,168.62	0.00	0.00	0.00	0.00	BOST FARM 41C-8-L

Hewlett-Packard

Planning Report

Database:	EDM 5000.14 Single User Db	Local Co-ordinate Reference:	Well BOST FARM 41C-8-L
Company:	SRC ENERGY	TVD Reference:	RKB = 20' @ 4901.00usft (PD 462)
Project:	WELD COUNTY (NAD83, TRUE NORTH)	MD Reference:	RKB = 20' @ 4901.00usft (PD 462)
Site:	5N-66W-07 BOST FARM 5-7 PAD	North Reference:	True
Well:	BOST FARM 41C-8-L	Survey Calculation Method:	Minimum Curvature
Wellbore:	Wellbore #1		
Design:	Design #1		

Planned Survey									
Measured Depth (usft)	Inclination (°)	Azimuth (°)	Vertical Depth (usft)	+N/-S (usft)	+E/-W (usft)	Vertical Section (usft)	Dogleg Rate (°/100usft)	Build Rate (°/100usft)	Turn Rate (°/100usft)
0.00	0.00	0.00	0.00	0.00	0.00	0.00	0.00	0.00	0.00
100.00	0.00	0.00	100.00	0.00	0.00	0.00	0.00	0.00	0.00
200.00	0.00	0.00	200.00	0.00	0.00	0.00	0.00	0.00	0.00
250.00	0.00	0.00	250.00	0.00	0.00	0.00	0.00	0.00	0.00
Begin Nudge @ 250.00ft									
300.00	1.00	276.00	300.00	0.05	-0.43	-0.43	2.00	2.00	0.00
400.00	3.00	276.00	399.93	0.41	-3.90	-3.90	2.00	2.00	0.00
500.00	5.00	276.00	499.68	1.14	-10.84	-10.82	2.00	2.00	0.00
600.00	7.00	276.00	599.13	2.23	-21.24	-21.20	2.00	2.00	0.00
700.00	9.00	276.00	698.15	3.69	-35.08	-35.01	2.00	2.00	0.00
800.00	11.00	276.00	796.63	5.50	-52.35	-52.24	2.00	2.00	0.00
900.00	13.00	276.00	894.44	7.67	-73.02	-72.88	2.00	2.00	0.00
930.00	13.60	276.00	923.63	8.40	-79.89	-79.73	2.00	2.00	0.00
End Nudge @ 930.00ft									
1,000.00	13.60	276.00	991.67	10.12	-96.26	-96.07	0.00	0.00	0.00
1,100.00	13.60	276.00	1,088.87	12.57	-119.64	-119.41	0.00	0.00	0.00
1,200.00	13.60	276.00	1,186.06	15.03	-143.03	-142.75	0.00	0.00	0.00
1,300.00	13.60	276.00	1,283.26	17.49	-166.41	-166.09	0.00	0.00	0.00
1,400.00	13.60	276.00	1,380.45	19.95	-189.80	-189.43	0.00	0.00	0.00
1,500.00	13.60	276.00	1,477.65	22.41	-213.18	-212.77	0.00	0.00	0.00
1,600.00	13.60	276.00	1,574.85	24.86	-236.57	-236.11	0.00	0.00	0.00
1,700.00	13.60	276.00	1,672.04	27.32	-259.95	-259.45	0.00	0.00	0.00
1,780.21	13.60	276.00	1,750.00	29.29	-278.71	-278.17	0.00	0.00	0.00
9 5/8"									
1,800.00	13.60	276.00	1,769.24	29.78	-283.34	-282.79	0.00	0.00	0.00
1,900.00	13.60	276.00	1,866.43	32.24	-306.72	-306.13	0.00	0.00	0.00
2,000.00	13.60	276.00	1,963.63	34.70	-330.11	-329.47	0.00	0.00	0.00
2,100.00	13.60	276.00	2,060.83	37.15	-353.49	-352.81	0.00	0.00	0.00
2,200.00	13.60	276.00	2,158.02	39.61	-376.88	-376.15	0.00	0.00	0.00
2,300.00	13.60	276.00	2,255.22	42.07	-400.27	-399.49	0.00	0.00	0.00
2,400.00	13.60	276.00	2,352.42	44.53	-423.65	-422.83	0.00	0.00	0.00
2,500.00	13.60	276.00	2,449.61	46.99	-447.04	-446.17	0.00	0.00	0.00
2,600.00	13.60	276.00	2,546.81	49.44	-470.42	-469.51	0.00	0.00	0.00
2,700.00	13.60	276.00	2,644.00	51.90	-493.81	-492.85	0.00	0.00	0.00
2,800.00	13.60	276.00	2,741.20	54.36	-517.19	-516.19	0.00	0.00	0.00
2,900.00	13.60	276.00	2,838.40	56.82	-540.58	-539.53	0.00	0.00	0.00
3,000.00	13.60	276.00	2,935.59	59.27	-563.96	-562.87	0.00	0.00	0.00
3,100.00	13.60	276.00	3,032.79	61.73	-587.35	-586.22	0.00	0.00	0.00
3,200.00	13.60	276.00	3,129.98	64.19	-610.73	-609.56	0.00	0.00	0.00
3,300.00	13.60	276.00	3,227.18	66.65	-634.12	-632.90	0.00	0.00	0.00
3,400.00	13.60	276.00	3,324.38	69.11	-657.51	-656.24	0.00	0.00	0.00
3,500.00	13.60	276.00	3,421.57	71.56	-680.89	-679.58	0.00	0.00	0.00
3,600.00	13.60	276.00	3,518.77	74.02	-704.28	-702.92	0.00	0.00	0.00
3,700.00	13.60	276.00	3,615.96	76.48	-727.66	-726.26	0.00	0.00	0.00
3,800.00	13.60	276.00	3,713.16	78.94	-751.05	-749.60	0.00	0.00	0.00
3,900.00	13.60	276.00	3,810.36	81.40	-774.43	-772.94	0.00	0.00	0.00
4,000.00	13.60	276.00	3,907.55	83.85	-797.82	-796.28	0.00	0.00	0.00
4,100.00	13.60	276.00	4,004.75	86.31	-821.20	-819.62	0.00	0.00	0.00
4,200.00	13.60	276.00	4,101.95	88.77	-844.59	-842.96	0.00	0.00	0.00
4,300.00	13.60	276.00	4,199.14	91.23	-867.97	-866.30	0.00	0.00	0.00
4,400.00	13.60	276.00	4,296.34	93.69	-891.36	-889.64	0.00	0.00	0.00
4,500.00	13.60	276.00	4,393.53	96.14	-914.74	-912.98	0.00	0.00	0.00
4,600.00	13.60	276.00	4,490.73	98.60	-938.13	-936.32	0.00	0.00	0.00

Hewlett-Packard

Planning Report

Database:	EDM 5000.14 Single User Db	Local Co-ordinate Reference:	Well BOST FARM 41C-8-L
Company:	SRC ENERGY	TVD Reference:	RKB = 20' @ 4901.00usft (PD 462)
Project:	WELD COUNTY (NAD83, TRUE NORTH)	MD Reference:	RKB = 20' @ 4901.00usft (PD 462)
Site:	5N-66W-07 BOST FARM 5-7 PAD	North Reference:	True
Well:	BOST FARM 41C-8-L	Survey Calculation Method:	Minimum Curvature
Wellbore:	Wellbore #1		
Design:	Design #1		

Planned Survey										
Measured Depth (usft)	Inclination (°)	Azimuth (°)	Vertical Depth (usft)	+N/-S (usft)	+E/-W (usft)	Vertical Section (usft)	Dogleg Rate (°/100usft)	Build Rate (°/100usft)	Turn Rate (°/100usft)	
4,700.00	13.60	276.00	4,587.93	101.06	-961.52	-959.66	0.00	0.00	0.00	
4,800.00	13.60	276.00	4,685.12	103.52	-984.90	-983.00	0.00	0.00	0.00	
4,900.00	13.60	276.00	4,782.32	105.98	-1,008.29	-1,006.34	0.00	0.00	0.00	
5,000.00	13.60	276.00	4,879.51	108.43	-1,031.67	-1,029.68	0.00	0.00	0.00	
5,100.00	13.60	276.00	4,976.71	110.89	-1,055.06	-1,053.02	0.00	0.00	0.00	
5,200.00	13.60	276.00	5,073.91	113.35	-1,078.44	-1,076.36	0.00	0.00	0.00	
5,300.00	13.60	276.00	5,171.10	115.81	-1,101.83	-1,099.70	0.00	0.00	0.00	
5,400.00	13.60	276.00	5,268.30	118.26	-1,125.21	-1,123.04	0.00	0.00	0.00	
5,500.00	13.60	276.00	5,365.49	120.72	-1,148.60	-1,146.38	0.00	0.00	0.00	
5,600.00	13.60	276.00	5,462.69	123.18	-1,171.98	-1,169.72	0.00	0.00	0.00	
5,700.00	13.60	276.00	5,559.89	125.64	-1,195.37	-1,193.06	0.00	0.00	0.00	
5,800.00	13.60	276.00	5,657.08	128.10	-1,218.75	-1,216.40	0.00	0.00	0.00	
5,900.00	13.60	276.00	5,754.28	130.55	-1,242.14	-1,239.74	0.00	0.00	0.00	
6,000.00	13.60	276.00	5,851.47	133.01	-1,265.53	-1,263.08	0.00	0.00	0.00	
6,100.00	13.60	276.00	5,948.67	135.47	-1,288.91	-1,286.42	0.00	0.00	0.00	
6,200.00	13.60	276.00	6,045.87	137.93	-1,312.30	-1,309.76	0.00	0.00	0.00	
6,300.00	13.60	276.00	6,143.06	140.39	-1,335.68	-1,333.10	0.00	0.00	0.00	
6,400.00	13.60	276.00	6,240.26	142.84	-1,359.07	-1,356.44	0.00	0.00	0.00	
6,500.00	13.60	276.00	6,337.46	145.30	-1,382.45	-1,379.78	0.00	0.00	0.00	
6,545.68	13.60	276.00	6,381.85	146.42	-1,393.13	-1,390.45	0.00	0.00	0.00	
KOP @ 6545.68ft :: DLS = 9°/100'										
6,550.00	13.21	276.18	6,386.06	146.53	-1,394.13	-1,391.44	9.00	-8.95	4.17	
6,600.00	8.75	279.40	6,435.13	147.77	-1,403.57	-1,400.86	9.00	-8.92	6.45	
6,650.00	4.38	289.10	6,484.79	149.01	-1,409.13	-1,406.39	9.00	-8.75	19.39	
6,700.00	1.47	14.33	6,534.73	150.26	-1,410.77	-1,408.02	9.00	-5.81	170.45	
6,750.00	5.07	73.75	6,584.65	151.50	-1,408.49	-1,405.72	9.00	7.19	118.84	
6,800.00	9.47	81.48	6,634.24	152.73	-1,402.30	-1,399.51	9.00	8.80	15.47	
6,850.00	13.93	84.31	6,683.19	153.94	-1,392.24	-1,389.42	9.00	8.93	5.66	
6,900.00	18.42	85.79	6,731.20	155.12	-1,378.36	-1,375.53	9.00	8.96	2.95	
6,950.00	22.90	86.70	6,777.97	156.26	-1,360.76	-1,357.91	9.00	8.98	1.82	
7,000.00	27.40	87.32	6,823.22	157.36	-1,339.55	-1,336.68	9.00	8.98	1.25	
7,050.00	31.89	87.79	6,866.66	158.40	-1,314.85	-1,311.97	9.00	8.99	0.92	
7,100.00	36.39	88.14	6,908.04	159.39	-1,286.81	-1,283.92	9.00	8.99	0.72	
7,150.00	40.88	88.43	6,947.08	160.32	-1,255.62	-1,252.71	9.00	8.99	0.58	
7,200.00	45.38	88.67	6,983.56	161.18	-1,221.45	-1,218.54	9.00	8.99	0.48	
7,250.00	49.88	88.88	7,017.25	161.97	-1,184.53	-1,181.61	9.00	8.99	0.41	
7,300.00	54.38	89.06	7,047.94	162.68	-1,145.08	-1,142.15	9.00	9.00	0.36	
7,350.00	58.87	89.22	7,075.44	163.30	-1,103.34	-1,100.40	9.00	9.00	0.32	
7,400.00	63.37	89.37	7,099.58	163.84	-1,059.57	-1,056.63	9.00	9.00	0.29	
7,450.00	67.87	89.50	7,120.21	164.29	-1,014.04	-1,011.11	9.00	9.00	0.27	
7,500.00	72.37	89.63	7,137.21	164.65	-967.04	-964.10	9.00	9.00	0.25	
7,550.00	76.87	89.75	7,150.47	164.91	-918.84	-915.91	9.00	9.00	0.24	
7,600.00	81.37	89.87	7,159.91	165.07	-869.75	-866.82	9.00	9.00	0.23	
7,650.00	85.86	89.98	7,165.47	165.14	-820.08	-817.15	9.00	9.00	0.23	
7,683.05	88.84	90.05	7,167.00	165.13	-787.07	-784.15	9.00	9.00	0.22	
End Build @ 7683.05ft - 5 1/2"										
7,700.00	88.84	90.05	7,167.34	165.12	-770.12	-767.20	0.00	0.00	0.00	
7,800.00	88.84	90.05	7,169.37	165.02	-670.14	-667.24	0.00	0.00	0.00	
7,900.00	88.84	90.05	7,171.40	164.93	-570.16	-567.28	0.00	0.00	0.00	
8,000.00	88.84	90.05	7,173.43	164.84	-470.18	-467.31	0.00	0.00	0.00	
8,100.00	88.84	90.05	7,175.46	164.74	-370.20	-367.35	0.00	0.00	0.00	
8,200.00	88.84	90.05	7,177.48	164.65	-270.22	-267.39	0.00	0.00	0.00	
8,300.00	88.84	90.05	7,179.51	164.55	-170.24	-167.42	0.00	0.00	0.00	
8,400.00	88.84	90.05	7,181.54	164.46	-70.26	-67.46	0.00	0.00	0.00	

Hewlett-Packard

Planning Report

Database:	EDM 5000.14 Single User Db	Local Co-ordinate Reference:	Well BOST FARM 41C-8-L
Company:	SRC ENERGY	TVD Reference:	RKB = 20' @ 4901.00usft (PD 462)
Project:	WELD COUNTY (NAD83, TRUE NORTH)	MD Reference:	RKB = 20' @ 4901.00usft (PD 462)
Site:	5N-66W-07 BOST FARM 5-7 PAD	North Reference:	True
Well:	BOST FARM 41C-8-L	Survey Calculation Method:	Minimum Curvature
Wellbore:	Wellbore #1		
Design:	Design #1		

Planned Survey										
Measured Depth (usft)	Inclination (°)	Azimuth (°)	Vertical Depth (usft)	+N/-S (usft)	+E/-W (usft)	Vertical Section (usft)	Dogleg Rate (°/100usft)	Build Rate (°/100usft)	Turn Rate (°/100usft)	
8,500.00	88.84	90.05	7,183.57	164.37	29.72	32.50	0.00	0.00	0.00	
8,600.00	88.84	90.05	7,185.60	164.27	129.70	132.47	0.00	0.00	0.00	
8,700.00	88.84	90.05	7,187.63	164.18	229.68	232.43	0.00	0.00	0.00	
8,800.00	88.84	90.05	7,189.66	164.09	329.65	332.40	0.00	0.00	0.00	
8,900.00	88.84	90.05	7,191.68	163.99	429.63	432.36	0.00	0.00	0.00	
9,000.00	88.84	90.05	7,193.71	163.90	529.61	532.32	0.00	0.00	0.00	
9,100.00	88.84	90.05	7,195.74	163.80	629.59	632.29	0.00	0.00	0.00	
9,200.00	88.84	90.05	7,197.77	163.71	729.57	732.25	0.00	0.00	0.00	
9,300.00	88.84	90.05	7,199.80	163.62	829.55	832.21	0.00	0.00	0.00	
9,400.00	88.84	90.05	7,201.83	163.52	929.53	932.18	0.00	0.00	0.00	
9,500.00	88.84	90.05	7,203.86	163.43	1,029.51	1,032.14	0.00	0.00	0.00	
9,600.00	88.84	90.05	7,205.88	163.34	1,129.49	1,132.10	0.00	0.00	0.00	
9,700.00	88.84	90.05	7,207.91	163.24	1,229.47	1,232.07	0.00	0.00	0.00	
9,800.00	88.84	90.05	7,209.94	163.15	1,329.45	1,332.03	0.00	0.00	0.00	
9,900.00	88.84	90.05	7,211.97	163.06	1,429.43	1,431.99	0.00	0.00	0.00	
10,000.00	88.84	90.05	7,214.00	162.96	1,529.41	1,531.96	0.00	0.00	0.00	
10,100.00	88.84	90.05	7,216.03	162.87	1,629.39	1,631.92	0.00	0.00	0.00	
10,200.00	88.84	90.05	7,218.06	162.77	1,729.37	1,731.88	0.00	0.00	0.00	
10,300.00	88.84	90.05	7,220.09	162.68	1,829.35	1,831.85	0.00	0.00	0.00	
10,400.00	88.84	90.05	7,222.11	162.59	1,929.32	1,931.81	0.00	0.00	0.00	
10,500.00	88.84	90.05	7,224.14	162.49	2,029.30	2,031.77	0.00	0.00	0.00	
10,600.00	88.84	90.05	7,226.17	162.40	2,129.28	2,131.74	0.00	0.00	0.00	
10,700.00	88.84	90.05	7,228.20	162.31	2,229.26	2,231.70	0.00	0.00	0.00	
10,800.00	88.84	90.05	7,230.23	162.21	2,329.24	2,331.66	0.00	0.00	0.00	
10,900.00	88.84	90.05	7,232.26	162.12	2,429.22	2,431.63	0.00	0.00	0.00	
11,000.00	88.84	90.05	7,234.29	162.03	2,529.20	2,531.59	0.00	0.00	0.00	
11,100.00	88.84	90.05	7,236.31	161.93	2,629.18	2,631.55	0.00	0.00	0.00	
11,200.00	88.84	90.05	7,238.34	161.84	2,729.16	2,731.52	0.00	0.00	0.00	
11,300.00	88.84	90.05	7,240.37	161.74	2,829.14	2,831.48	0.00	0.00	0.00	
11,400.00	88.84	90.05	7,242.40	161.65	2,929.12	2,931.44	0.00	0.00	0.00	
11,500.00	88.84	90.05	7,244.43	161.56	3,029.10	3,031.41	0.00	0.00	0.00	
11,600.00	88.84	90.05	7,246.46	161.46	3,129.08	3,131.37	0.00	0.00	0.00	
11,700.00	88.84	90.05	7,248.49	161.37	3,229.06	3,231.33	0.00	0.00	0.00	
11,800.00	88.84	90.05	7,250.51	161.28	3,329.04	3,331.30	0.00	0.00	0.00	
11,900.00	88.84	90.05	7,252.54	161.18	3,429.02	3,431.26	0.00	0.00	0.00	
12,000.00	88.84	90.05	7,254.57	161.09	3,528.99	3,531.22	0.00	0.00	0.00	
12,100.00	88.84	90.05	7,256.60	160.99	3,628.97	3,631.19	0.00	0.00	0.00	
12,200.00	88.84	90.05	7,258.63	160.90	3,728.95	3,731.15	0.00	0.00	0.00	
12,300.00	88.84	90.05	7,260.66	160.81	3,828.93	3,831.11	0.00	0.00	0.00	
12,400.00	88.84	90.05	7,262.69	160.71	3,928.91	3,931.08	0.00	0.00	0.00	
12,500.00	88.84	90.05	7,264.71	160.62	4,028.89	4,031.04	0.00	0.00	0.00	
12,600.00	88.84	90.05	7,266.74	160.53	4,128.87	4,131.00	0.00	0.00	0.00	
12,700.00	88.84	90.05	7,268.77	160.43	4,228.85	4,230.97	0.00	0.00	0.00	
12,800.00	88.84	90.05	7,270.80	160.34	4,328.83	4,330.93	0.00	0.00	0.00	
12,900.00	88.84	90.05	7,272.83	160.25	4,428.81	4,430.89	0.00	0.00	0.00	
13,000.00	88.84	90.05	7,274.86	160.15	4,528.79	4,530.86	0.00	0.00	0.00	
13,100.00	88.84	90.05	7,276.89	160.06	4,628.77	4,630.82	0.00	0.00	0.00	
13,200.00	88.84	90.05	7,278.91	159.96	4,728.75	4,730.78	0.00	0.00	0.00	
13,300.00	88.84	90.05	7,280.94	159.87	4,828.73	4,830.75	0.00	0.00	0.00	
13,400.00	88.84	90.05	7,282.97	159.78	4,928.71	4,930.71	0.00	0.00	0.00	
13,500.00	88.84	90.05	7,285.00	159.68	5,028.69	5,030.67	0.00	0.00	0.00	
13,600.00	88.84	90.05	7,287.03	159.59	5,128.66	5,130.64	0.00	0.00	0.00	
13,700.00	88.84	90.05	7,289.06	159.50	5,228.64	5,230.60	0.00	0.00	0.00	
13,800.00	88.84	90.05	7,291.09	159.40	5,328.62	5,330.56	0.00	0.00	0.00	

Hewlett-Packard

Planning Report

Database:	EDM 5000.14 Single User Db	Local Co-ordinate Reference:	Well BOST FARM 41C-8-L
Company:	SRC ENERGY	TVD Reference:	RKB = 20' @ 4901.00usft (PD 462)
Project:	WELD COUNTY (NAD83, TRUE NORTH)	MD Reference:	RKB = 20' @ 4901.00usft (PD 462)
Site:	5N-66W-07 BOST FARM 5-7 PAD	North Reference:	True
Well:	BOST FARM 41C-8-L	Survey Calculation Method:	Minimum Curvature
Wellbore:	Wellbore #1		
Design:	Design #1		

Planned Survey										
Measured Depth (usft)	Inclination (°)	Azimuth (°)	Vertical Depth (usft)	+N/-S (usft)	+E/-W (usft)	Vertical Section (usft)	Dogleg Rate (°/100usft)	Build Rate (°/100usft)	Turn Rate (°/100usft)	
13,900.00	88.84	90.05	7,293.11	159.31	5,428.60	5,430.53	0.00	0.00	0.00	
14,000.00	88.84	90.05	7,295.14	159.21	5,528.58	5,530.49	0.00	0.00	0.00	
14,100.00	88.84	90.05	7,297.17	159.12	5,628.56	5,630.45	0.00	0.00	0.00	
14,200.00	88.84	90.05	7,299.20	159.03	5,728.54	5,730.42	0.00	0.00	0.00	
14,300.00	88.84	90.05	7,301.23	158.93	5,828.52	5,830.38	0.00	0.00	0.00	
14,400.00	88.84	90.05	7,303.26	158.84	5,928.50	5,930.34	0.00	0.00	0.00	
14,500.00	88.84	90.05	7,305.29	158.75	6,028.48	6,030.31	0.00	0.00	0.00	
14,600.00	88.84	90.05	7,307.31	158.65	6,128.46	6,130.27	0.00	0.00	0.00	
14,700.00	88.84	90.05	7,309.34	158.56	6,228.44	6,230.23	0.00	0.00	0.00	
14,800.00	88.84	90.05	7,311.37	158.47	6,328.42	6,330.20	0.00	0.00	0.00	
14,900.00	88.84	90.05	7,313.40	158.37	6,428.40	6,430.16	0.00	0.00	0.00	
15,000.00	88.84	90.05	7,315.43	158.28	6,528.38	6,530.12	0.00	0.00	0.00	
15,100.00	88.84	90.05	7,317.46	158.18	6,628.36	6,630.09	0.00	0.00	0.00	
15,200.00	88.84	90.05	7,319.49	158.09	6,728.33	6,730.05	0.00	0.00	0.00	
15,300.00	88.84	90.05	7,321.52	158.00	6,828.31	6,830.01	0.00	0.00	0.00	
15,400.00	88.84	90.05	7,323.54	157.90	6,928.29	6,929.98	0.00	0.00	0.00	
15,500.00	88.84	90.05	7,325.57	157.81	7,028.27	7,029.94	0.00	0.00	0.00	
15,600.00	88.84	90.05	7,327.60	157.72	7,128.25	7,129.90	0.00	0.00	0.00	
15,700.00	88.84	90.05	7,329.63	157.62	7,228.23	7,229.87	0.00	0.00	0.00	
15,800.00	88.84	90.05	7,331.66	157.53	7,328.21	7,329.83	0.00	0.00	0.00	
15,900.00	88.84	90.05	7,333.69	157.44	7,428.19	7,429.79	0.00	0.00	0.00	
16,000.00	88.84	90.05	7,335.72	157.34	7,528.17	7,529.76	0.00	0.00	0.00	
16,100.00	88.84	90.05	7,337.74	157.25	7,628.15	7,629.72	0.00	0.00	0.00	
16,200.00	88.84	90.05	7,339.77	157.15	7,728.13	7,729.68	0.00	0.00	0.00	
16,300.00	88.84	90.05	7,341.80	157.06	7,828.11	7,829.65	0.00	0.00	0.00	
16,400.00	88.84	90.05	7,343.83	156.97	7,928.09	7,929.61	0.00	0.00	0.00	
16,500.00	88.84	90.05	7,345.86	156.87	8,028.07	8,029.57	0.00	0.00	0.00	
16,600.00	88.84	90.05	7,347.89	156.78	8,128.05	8,129.54	0.00	0.00	0.00	
16,700.00	88.84	90.05	7,349.92	156.69	8,228.03	8,229.50	0.00	0.00	0.00	
16,800.00	88.84	90.05	7,351.94	156.59	8,328.01	8,329.46	0.00	0.00	0.00	
16,900.00	88.84	90.05	7,353.97	156.50	8,427.98	8,429.43	0.00	0.00	0.00	
17,000.00	88.84	90.05	7,356.00	156.40	8,527.96	8,529.39	0.00	0.00	0.00	
17,100.00	88.84	90.05	7,358.03	156.31	8,627.94	8,629.35	0.00	0.00	0.00	
17,200.00	88.84	90.05	7,360.06	156.22	8,727.92	8,729.32	0.00	0.00	0.00	
17,300.00	88.84	90.05	7,362.09	156.12	8,827.90	8,829.28	0.00	0.00	0.00	
17,400.00	88.84	90.05	7,364.12	156.03	8,927.88	8,929.24	0.00	0.00	0.00	
17,500.00	88.84	90.05	7,366.14	155.94	9,027.86	9,029.21	0.00	0.00	0.00	
17,600.00	88.84	90.05	7,368.17	155.84	9,127.84	9,129.17	0.00	0.00	0.00	
17,640.78	88.84	90.05	7,369.00	155.80	9,168.62	9,169.94	0.00	0.00	0.00	
TD Well @ 17640.78ft										

Casing Points					
Measured Depth (usft)	Vertical Depth (usft)	Name		Casing Diameter (")	Hole Diameter (")
1,780.21	1,750.00	9 5/8"		9-5/8	13-1/2
7,683.05	7,167.00	5 1/2"		5-1/2	8-1/2

Hewlett-Packard

Planning Report

Database:	EDM 5000.14 Single User Db	Local Co-ordinate Reference:	Well BOST FARM 41C-8-L
Company:	SRC ENERGY	TVD Reference:	RKB = 20' @ 4901.00usft (PD 462)
Project:	WELD COUNTY (NAD83, TRUE NORTH)	MD Reference:	RKB = 20' @ 4901.00usft (PD 462)
Site:	5N-66W-07 BOST FARM 5-7 PAD	North Reference:	True
Well:	BOST FARM 41C-8-L	Survey Calculation Method:	Minimum Curvature
Wellbore:	Wellbore #1		
Design:	Design #1		

Plan Annotations					
Measured Depth (usft)	Vertical Depth (usft)	Local Coordinates		Comment	
		+N/-S (usft)	+E/-W (usft)		
250.00	250.00	0.00	0.00	Begin Nudge @ 250.00ft	
930.00	923.63	8.40	-79.89	End Nudge @ 930.00ft	
6,545.68	6,381.85	146.42	-1,393.13	KOP @ 6545.68ft :: DLS = 9°/100'	
7,683.05	7,167.00	165.13	-787.06	End Build @ 7683.05ft	
17,640.78	7,369.00	155.80	9,168.62	TD Well @ 17640.78ft	