

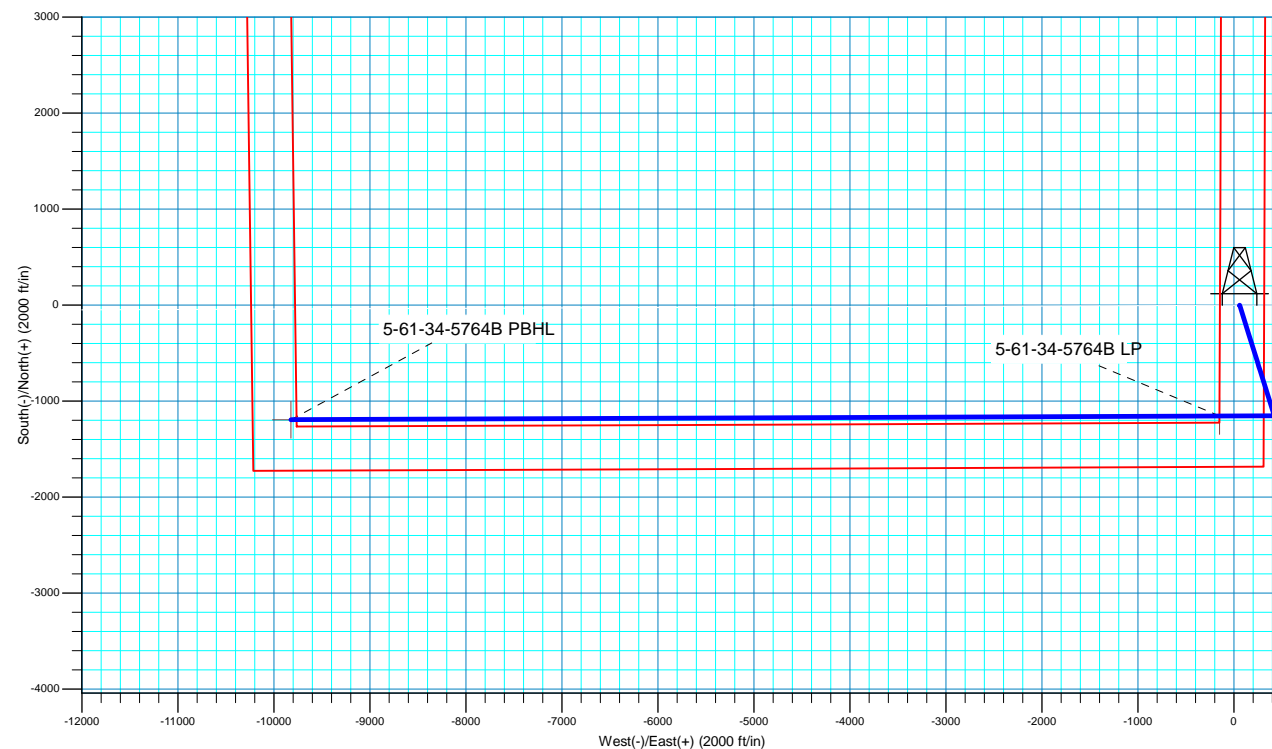
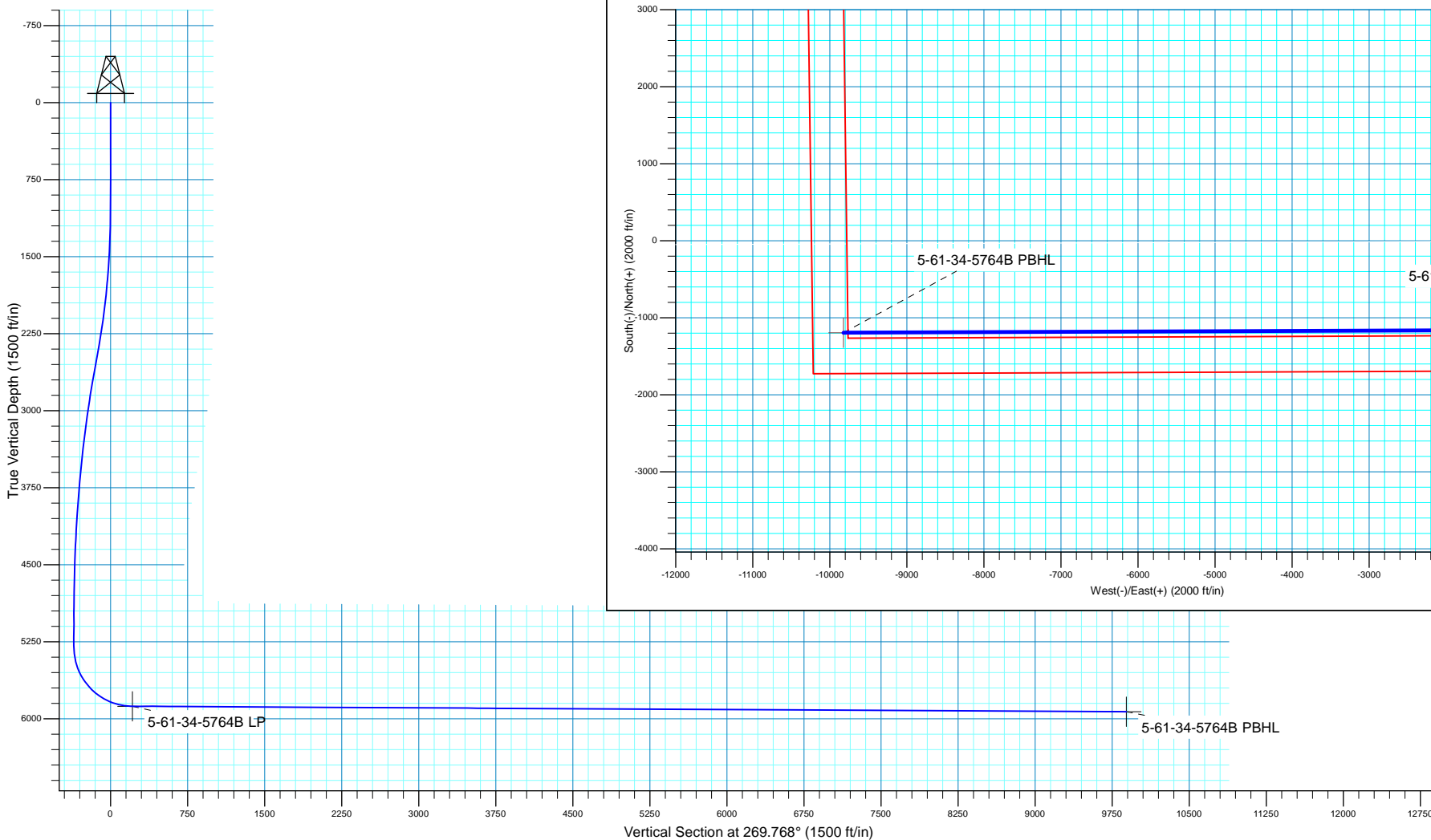


SECTION DETAILS

MD	Inc	Azi	TVD	+N/-S	+E/-W	Dleg	TFace	VSect
0.00	0.00	0.000	0.00	-0.02	59.64	0.00	0.00	0.00
1000.00	0.00	0.000	1000.00	-0.02	59.64	0.00	0.00	0.00
2451.72	31.44	162.618	2379.96	-370.69	175.68	2.17	162.62	-114.53
2752.22	31.44	162.618	2636.34	-520.28	222.50	0.00	0.00	-160.76
5228.34	0.00	0.000	4990.05	-1152.51	420.42	1.27	180.00	-356.11
5543.34	0.00	0.000	5305.05	-1152.51	420.42	0.00	0.00	-356.11
6440.20	89.69	269.768	5878.00	-1154.82	-149.39	10.00	269.77	213.71
16114.18	89.69	269.768	5931.00	-1194.03	-9823.15	0.00	0.00	9887.54

WELL DETAILS: Anschutz Equus Farms 5-61-34-5764B

		GL 4479.6' & KB 20' @ 4499.60ft		4479.60	
+N/-S	+E/-W	Northing	Easting	Latitude	Longitude
-0.02	59.64	1374783.38	3366068.97	40° 21' 17.060 N	104° 11' 11.209 W





Bill Barrett Corporation

Bill Barrett Corp.

Weld County, CO NAD 83

Anschutz Equus Farms 5-61-34 NESE

Anschutz Equus Farms 5-61-34-5764B

OH

Plan: Plan 1

Standard Planning Report

28 August, 2017



Scientific Drilling

www.scientificdrilling.com



Database:	Casper District	Local Co-ordinate Reference:	Well Anschutz Equus Farms 5-61-34-5764B
Company:	Bill Barrett Corp.	TVD Reference:	GL 4479.6' & KB 20' @ 4499.60ft
Project:	Weld County, CO NAD 83	MD Reference:	GL 4479.6' & KB 20' @ 4499.60ft
Site:	Anschutz Equus Farms 5-61-34 NESE	North Reference:	True
Well:	Anschutz Equus Farms 5-61-34-5764B	Survey Calculation Method:	Minimum Curvature
Wellbore:	OH		
Design:	Plan 1		

Project	Weld County, CO NAD 83		
Map System:	US State Plane 1983	System Datum:	Mean Sea Level
Geo Datum:	North American Datum 1983		
Map Zone:	Colorado Northern Zone		

Site						Anschutz Equus Farms 5-61-34 NESE, Site Center : Anschuts Equus Farms 5-61-34-2532BS					
Site Position:				Northing:		1,374,782.51 usft		Latitude:		40° 21' 17.060 N	
From:		Lat/Long		Easting:		3,366,009.33 usft		Longitude:		104° 11' 11.980 W	
Position Uncertainty:		0.00 ft		Slot Radius:		13.200 in		Grid Convergence:		0.85	

Well	Anschutz Equus Farms 5-61-34-5764B, 1685' FSL 255' FEL Sec 34 T5N R61W					
Well Position	+N/-S	-0.02 ft	Northing:	1,374,783.38 usft	Latitude:	40° 21' 17.060 N
	+E/-W	59.64 ft	Easting:	3,366,068.97 usft	Longitude:	104° 11' 11.209 W
Position Uncertainty		0.00 ft	Wellhead Elevation:	0.00 ft	Ground Level:	4,479.60 ft

Wellbore	OH				
Magnetics	Model Name	Sample Date	Declination (°)	Dip Angle (°)	Field Strength (nT)
	HDGM	8/28/2017	8.23	67.07	52,367

Design	Plan 1			
Audit Notes:				
Version:	Phase:	PLAN	Tie On Depth:	0.00
Vertical Section:	Depth From (TVD) (ft)	+N/-S (ft)	+E/-W (ft)	Direction (°)
	0.00	0.00	0.00	269.768

Plan Sections										
Measured Depth (ft)	Inclination (°)	Azimuth (°)	Vertical Depth (ft)	+N/-S (ft)	+E/-W (ft)	Dogleg Rate (°/100ft)	Build Rate (°/100ft)	Turn Rate (°/100ft)	TFO (°)	Target
0.00	0.00	0.000	0.00	0.00	0.00	0.00	0.00	0.00	0.00	
1,000.00	0.00	0.000	1,000.00	0.00	0.00	0.00	0.00	0.00	0.00	
2,451.72	31.44	162.618	2,379.96	-370.67	116.04	2.17	2.17	0.00	162.62	
2,752.22	31.44	162.618	2,636.34	-520.26	162.86	0.00	0.00	0.00	0.00	
5,228.34	0.00	0.000	4,990.05	-1,152.49	360.78	1.27	-1.27	0.00	180.00	
5,543.34	0.00	0.000	5,305.05	-1,152.49	360.78	0.00	0.00	0.00	0.00	
6,440.20	89.69	269.768	5,878.00	-1,154.80	-209.03	10.00	10.00	-10.06	269.77	
16,114.18	89.69	269.768	5,931.00	-1,193.98	-9,882.79	0.00	0.00	0.00	0.00	5-61-34-5764B PBHL

Database:	Casper District	Local Co-ordinate Reference:	Well Anschutz Equus Farms 5-61-34-5764B
Company:	Bill Barrett Corp.	TVD Reference:	GL 4479.6' & KB 20' @ 4499.60ft
Project:	Weld County, CO NAD 83	MD Reference:	GL 4479.6' & KB 20' @ 4499.60ft
Site:	Anschutz Equus Farms 5-61-34 NESE	North Reference:	True
Well:	Anschutz Equus Farms 5-61-34-5764B	Survey Calculation Method:	Minimum Curvature
Wellbore:	OH		
Design:	Plan 1		

Planned Survey									
Measured Depth (ft)	Inclination (°)	Azimuth (°)	Vertical Depth (ft)	+N/-S (ft)	+E/-W (ft)	Vertical Section (ft)	Dogleg Rate (°/100ft)	Build Rate (°/100ft)	Turn Rate (°/100ft)
0.00	0.00	0.000	0.00	0.00	0.00	0.00	0.00	0.00	0.00
100.00	0.00	0.000	100.00	0.00	0.00	0.00	0.00	0.00	0.00
200.00	0.00	0.000	200.00	0.00	0.00	0.00	0.00	0.00	0.00
300.00	0.00	0.000	300.00	0.00	0.00	0.00	0.00	0.00	0.00
400.00	0.00	0.000	400.00	0.00	0.00	0.00	0.00	0.00	0.00
500.00	0.00	0.000	500.00	0.00	0.00	0.00	0.00	0.00	0.00
600.00	0.00	0.000	600.00	0.00	0.00	0.00	0.00	0.00	0.00
700.00	0.00	0.000	700.00	0.00	0.00	0.00	0.00	0.00	0.00
800.00	0.00	0.000	800.00	0.00	0.00	0.00	0.00	0.00	0.00
900.00	0.00	0.000	900.00	0.00	0.00	0.00	0.00	0.00	0.00
1,000.00	0.00	0.000	1,000.00	0.00	0.00	0.00	0.00	0.00	0.00
Start Build 2.17									
1,100.00	2.17	162.618	1,099.98	-1.80	0.56	-0.56	2.17	2.17	0.00
1,200.00	4.33	162.618	1,199.81	-7.21	2.26	-2.23	2.17	2.17	0.00
1,300.00	6.50	162.618	1,299.36	-16.22	5.08	-5.01	2.17	2.17	0.00
1,400.00	8.66	162.618	1,398.48	-28.80	9.02	-8.90	2.17	2.17	0.00
1,500.00	10.83	162.618	1,497.03	-44.96	14.07	-13.89	2.17	2.17	0.00
1,600.00	12.99	162.618	1,594.87	-64.65	20.24	-19.98	2.17	2.17	0.00
1,700.00	15.16	162.618	1,691.86	-87.86	27.51	-27.15	2.17	2.17	0.00
1,800.00	17.33	162.618	1,787.86	-114.56	35.86	-35.40	2.17	2.17	0.00
1,900.00	19.49	162.618	1,882.74	-144.69	45.29	-44.71	2.17	2.17	0.00
2,000.00	21.66	162.618	1,976.36	-178.23	55.79	-55.07	2.17	2.17	0.00
2,100.00	23.82	162.618	2,068.58	-215.11	67.34	-66.47	2.17	2.17	0.00
2,200.00	25.99	162.618	2,159.27	-255.30	79.92	-78.89	2.17	2.17	0.00
2,300.00	28.15	162.618	2,248.31	-298.73	93.52	-92.31	2.17	2.17	0.00
2,400.00	30.32	162.618	2,335.57	-345.34	108.11	-106.71	2.17	2.17	0.00
2,451.72	31.44	162.618	2,379.96	-370.67	116.04	-114.53	2.17	2.17	0.00
Start 300.50 hold at 2451.72 MD									
2,500.00	31.44	162.618	2,421.15	-394.70	123.56	-121.96	0.00	0.00	0.00
2,600.00	31.44	162.618	2,506.47	-444.48	139.14	-137.34	0.00	0.00	0.00
2,700.00	31.44	162.618	2,591.78	-494.26	154.73	-152.72	0.00	0.00	0.00
2,752.22	31.44	162.618	2,636.34	-520.26	162.86	-160.76	0.00	0.00	0.00
Start Drop -1.27									
2,800.00	30.83	162.618	2,677.23	-543.83	170.24	-168.04	1.27	-1.27	0.00
2,900.00	29.56	162.618	2,763.66	-591.84	185.27	-182.87	1.27	-1.27	0.00
3,000.00	28.29	162.618	2,851.18	-638.00	199.72	-197.14	1.27	-1.27	0.00
3,100.00	27.02	162.618	2,939.75	-682.30	213.59	-210.82	1.27	-1.27	0.00
3,200.00	25.75	162.618	3,029.33	-724.71	226.87	-223.93	1.27	-1.27	0.00
3,300.00	24.48	162.618	3,119.87	-765.23	239.55	-236.45	1.27	-1.27	0.00
3,400.00	23.22	162.618	3,211.33	-803.81	251.63	-248.37	1.27	-1.27	0.00
3,500.00	21.95	162.618	3,303.66	-840.46	263.10	-259.69	1.27	-1.27	0.00
3,600.00	20.68	162.618	3,396.82	-875.14	273.96	-270.41	1.27	-1.27	0.00
3,700.00	19.41	162.618	3,490.76	-907.84	284.19	-280.52	1.27	-1.27	0.00
3,800.00	18.14	162.618	3,585.44	-938.55	293.81	-290.00	1.27	-1.27	0.00
3,900.00	16.87	162.618	3,680.81	-967.25	302.79	-298.87	1.27	-1.27	0.00
4,000.00	15.60	162.618	3,776.82	-993.92	311.14	-307.11	1.27	-1.27	0.00
4,100.00	14.33	162.618	3,873.43	-1,018.56	318.85	-314.73	1.27	-1.27	0.00
4,200.00	13.06	162.618	3,970.59	-1,041.15	325.93	-321.71	1.27	-1.27	0.00
4,300.00	11.79	162.618	4,068.25	-1,061.68	332.35	-328.05	1.27	-1.27	0.00
4,400.00	10.52	162.618	4,166.36	-1,080.14	338.13	-333.75	1.27	-1.27	0.00
4,500.00	9.25	162.618	4,264.87	-1,096.52	343.26	-338.82	1.27	-1.27	0.00
4,600.00	7.98	162.618	4,363.74	-1,110.81	347.73	-343.23	1.27	-1.27	0.00
4,700.00	6.71	162.618	4,462.92	-1,123.01	351.55	-347.00	1.27	-1.27	0.00

Database:	Casper District	Local Co-ordinate Reference:	Well Anschutz Equus Farms 5-61-34-5764B
Company:	Bill Barrett Corp.	TVD Reference:	GL 4479.6' & KB 20' @ 4499.60ft
Project:	Weld County, CO NAD 83	MD Reference:	GL 4479.6' & KB 20' @ 4499.60ft
Site:	Anschutz Equus Farms 5-61-34 NESE	North Reference:	True
Well:	Anschutz Equus Farms 5-61-34-5764B	Survey Calculation Method:	Minimum Curvature
Wellbore:	OH		
Design:	Plan 1		

Planned Survey									
Measured Depth (ft)	Inclination (°)	Azimuth (°)	Vertical Depth (ft)	+N/-S (ft)	+E/-W (ft)	Vertical Section (ft)	Dogleg Rate (°/100ft)	Build Rate (°/100ft)	Turn Rate (°/100ft)
4,800.00	5.44	162.618	4,562.35	-1,133.10	354.71	-350.12	1.27	-1.27	0.00
4,900.00	4.17	162.618	4,662.00	-1,141.10	357.21	-352.59	1.27	-1.27	0.00
5,000.00	2.90	162.618	4,761.81	-1,146.98	359.05	-354.41	1.27	-1.27	0.00
5,100.00	1.63	162.618	4,861.73	-1,150.75	360.23	-355.57	1.27	-1.27	0.00
5,200.00	0.36	162.618	4,961.71	-1,152.41	360.75	-356.08	1.27	-1.27	0.00
5,228.34	0.00	0.000	4,990.05	-1,152.49	360.78	-356.11	1.27	-1.27	0.00
Start 315.00 hold at 5228.34 MD									
5,300.00	0.00	0.000	5,061.71	-1,152.49	360.78	-356.11	0.00	0.00	0.00
5,400.00	0.00	0.000	5,161.71	-1,152.49	360.78	-356.11	0.00	0.00	0.00
5,500.00	0.00	0.000	5,261.71	-1,152.49	360.78	-356.11	0.00	0.00	0.00
5,543.34	0.00	0.000	5,305.05	-1,152.49	360.78	-356.11	0.00	0.00	0.00
Start DLS 10.00 TFO 269.77									
5,600.00	5.67	269.768	5,361.62	-1,152.50	357.98	-353.31	10.00	10.00	0.00
5,700.00	15.67	269.768	5,459.77	-1,152.58	339.50	-334.83	10.00	10.00	0.00
5,800.00	25.67	269.768	5,553.21	-1,152.72	304.25	-299.58	10.00	10.00	0.00
5,900.00	35.67	269.768	5,639.12	-1,152.93	253.31	-248.64	10.00	10.00	0.00
6,000.00	45.67	269.768	5,714.88	-1,153.19	188.23	-183.56	10.00	10.00	0.00
6,100.00	55.67	269.768	5,778.18	-1,153.50	110.98	-106.31	10.00	10.00	0.00
6,200.00	65.67	269.768	5,827.11	-1,153.85	23.91	-19.24	10.00	10.00	0.00
6,300.00	75.67	269.768	5,860.17	-1,154.24	-70.33	75.00	10.00	10.00	0.00
6,400.00	85.67	269.768	5,876.37	-1,154.64	-168.88	173.55	10.00	10.00	0.00
6,440.20	89.69	269.768	5,878.00	-1,154.80	-209.03	213.71	10.00	10.00	0.00
Start 9673.98 hold at 6440.20 MD									
6,500.00	89.69	269.768	5,878.33	-1,155.04	-268.83	273.51	0.00	0.00	0.00
6,600.00	89.69	269.768	5,878.87	-1,155.45	-368.83	373.51	0.00	0.00	0.00
6,700.00	89.69	269.768	5,879.42	-1,155.85	-468.83	473.50	0.00	0.00	0.00
6,800.00	89.69	269.768	5,879.97	-1,156.26	-568.83	573.50	0.00	0.00	0.00
6,900.00	89.69	269.768	5,880.52	-1,156.66	-668.82	673.50	0.00	0.00	0.00
7,000.00	89.69	269.768	5,881.07	-1,157.07	-768.82	773.50	0.00	0.00	0.00
7,100.00	89.69	269.768	5,881.61	-1,157.47	-868.82	873.50	0.00	0.00	0.00
7,200.00	89.69	269.768	5,882.16	-1,157.88	-968.82	973.50	0.00	0.00	0.00
7,300.00	89.69	269.768	5,882.71	-1,158.28	-1,068.81	1,073.50	0.00	0.00	0.00
7,400.00	89.69	269.768	5,883.26	-1,158.69	-1,168.81	1,173.49	0.00	0.00	0.00
7,500.00	89.69	269.768	5,883.81	-1,159.09	-1,268.81	1,273.49	0.00	0.00	0.00
7,600.00	89.69	269.768	5,884.35	-1,159.50	-1,368.81	1,373.49	0.00	0.00	0.00
7,700.00	89.69	269.768	5,884.90	-1,159.90	-1,468.80	1,473.49	0.00	0.00	0.00
7,800.00	89.69	269.768	5,885.45	-1,160.31	-1,568.80	1,573.49	0.00	0.00	0.00
7,900.00	89.69	269.768	5,886.00	-1,160.71	-1,668.80	1,673.49	0.00	0.00	0.00
8,000.00	89.69	269.768	5,886.54	-1,161.12	-1,768.80	1,773.48	0.00	0.00	0.00
8,100.00	89.69	269.768	5,887.09	-1,161.52	-1,868.80	1,873.48	0.00	0.00	0.00
8,200.00	89.69	269.768	5,887.64	-1,161.93	-1,968.79	1,973.48	0.00	0.00	0.00
8,300.00	89.69	269.768	5,888.19	-1,162.33	-2,068.79	2,073.48	0.00	0.00	0.00
8,400.00	89.69	269.768	5,888.74	-1,162.74	-2,168.79	2,173.48	0.00	0.00	0.00
8,500.00	89.69	269.768	5,889.28	-1,163.14	-2,268.79	2,273.48	0.00	0.00	0.00
8,600.00	89.69	269.768	5,889.83	-1,163.55	-2,368.78	2,373.48	0.00	0.00	0.00
8,700.00	89.69	269.768	5,890.38	-1,163.95	-2,468.78	2,473.47	0.00	0.00	0.00
8,800.00	89.69	269.768	5,890.93	-1,164.36	-2,568.78	2,573.47	0.00	0.00	0.00
8,900.00	89.69	269.768	5,891.48	-1,164.76	-2,668.78	2,673.47	0.00	0.00	0.00
9,000.00	89.69	269.768	5,892.02	-1,165.17	-2,768.77	2,773.47	0.00	0.00	0.00
9,100.00	89.69	269.768	5,892.57	-1,165.57	-2,868.77	2,873.47	0.00	0.00	0.00
9,200.00	89.69	269.768	5,893.12	-1,165.98	-2,968.77	2,973.47	0.00	0.00	0.00
9,300.00	89.69	269.768	5,893.67	-1,166.38	-3,068.77	3,073.47	0.00	0.00	0.00
9,400.00	89.69	269.768	5,894.22	-1,166.79	-3,168.77	3,173.46	0.00	0.00	0.00

Database:	Casper District	Local Co-ordinate Reference:	Well Anschutz Equus Farms 5-61-34-5764B
Company:	Bill Barrett Corp.	TVD Reference:	GL 4479.6' & KB 20' @ 4499.60ft
Project:	Weld County, CO NAD 83	MD Reference:	GL 4479.6' & KB 20' @ 4499.60ft
Site:	Anschutz Equus Farms 5-61-34 NESE	North Reference:	True
Well:	Anschutz Equus Farms 5-61-34-5764B	Survey Calculation Method:	Minimum Curvature
Wellbore:	OH		
Design:	Plan 1		

Planned Survey									
Measured Depth (ft)	Inclination (°)	Azimuth (°)	Vertical Depth (ft)	+N/-S (ft)	+E/-W (ft)	Vertical Section (ft)	Dogleg Rate (°/100ft)	Build Rate (°/100ft)	Turn Rate (°/100ft)
9,500.00	89.69	269.768	5,894.76	-1,167.19	-3,268.76	3,273.46	0.00	0.00	0.00
9,600.00	89.69	269.768	5,895.31	-1,167.60	-3,368.76	3,373.46	0.00	0.00	0.00
9,700.00	89.69	269.768	5,895.86	-1,168.00	-3,468.76	3,473.46	0.00	0.00	0.00
9,800.00	89.69	269.768	5,896.41	-1,168.41	-3,568.76	3,573.46	0.00	0.00	0.00
9,900.00	89.69	269.768	5,896.95	-1,168.81	-3,668.75	3,673.46	0.00	0.00	0.00
10,000.00	89.69	269.768	5,897.50	-1,169.22	-3,768.75	3,773.46	0.00	0.00	0.00
10,100.00	89.69	269.768	5,898.05	-1,169.62	-3,868.75	3,873.45	0.00	0.00	0.00
10,200.00	89.69	269.768	5,898.60	-1,170.03	-3,968.75	3,973.45	0.00	0.00	0.00
10,300.00	89.69	269.768	5,899.15	-1,170.43	-4,068.74	4,073.45	0.00	0.00	0.00
10,400.00	89.69	269.768	5,899.69	-1,170.84	-4,168.74	4,173.45	0.00	0.00	0.00
10,500.00	89.69	269.768	5,900.24	-1,171.24	-4,268.74	4,273.45	0.00	0.00	0.00
10,600.00	89.69	269.768	5,900.79	-1,171.65	-4,368.74	4,373.45	0.00	0.00	0.00
10,700.00	89.69	269.768	5,901.34	-1,172.05	-4,468.74	4,473.44	0.00	0.00	0.00
10,800.00	89.69	269.768	5,901.89	-1,172.46	-4,568.73	4,573.44	0.00	0.00	0.00
10,900.00	89.69	269.768	5,902.43	-1,172.86	-4,668.73	4,673.44	0.00	0.00	0.00
11,000.00	89.69	269.768	5,902.98	-1,173.27	-4,768.73	4,773.44	0.00	0.00	0.00
11,100.00	89.69	269.768	5,903.53	-1,173.67	-4,868.73	4,873.44	0.00	0.00	0.00
11,200.00	89.69	269.768	5,904.08	-1,174.08	-4,968.72	4,973.44	0.00	0.00	0.00
11,300.00	89.69	269.768	5,904.62	-1,174.48	-5,068.72	5,073.44	0.00	0.00	0.00
11,400.00	89.69	269.768	5,905.17	-1,174.89	-5,168.72	5,173.43	0.00	0.00	0.00
11,500.00	89.69	269.768	5,905.72	-1,175.29	-5,268.72	5,273.43	0.00	0.00	0.00
11,600.00	89.69	269.768	5,906.27	-1,175.70	-5,368.71	5,373.43	0.00	0.00	0.00
11,700.00	89.69	269.768	5,906.82	-1,176.10	-5,468.71	5,473.43	0.00	0.00	0.00
11,800.00	89.69	269.768	5,907.36	-1,176.51	-5,568.71	5,573.43	0.00	0.00	0.00
11,900.00	89.69	269.768	5,907.91	-1,176.91	-5,668.71	5,673.43	0.00	0.00	0.00
12,000.00	89.69	269.768	5,908.46	-1,177.32	-5,768.71	5,773.43	0.00	0.00	0.00
12,100.00	89.69	269.768	5,909.01	-1,177.72	-5,868.70	5,873.42	0.00	0.00	0.00
12,200.00	89.69	269.768	5,909.56	-1,178.13	-5,968.70	5,973.42	0.00	0.00	0.00
12,300.00	89.69	269.768	5,910.10	-1,178.53	-6,068.70	6,073.42	0.00	0.00	0.00
12,400.00	89.69	269.768	5,910.65	-1,178.94	-6,168.70	6,173.42	0.00	0.00	0.00
12,500.00	89.69	269.768	5,911.20	-1,179.34	-6,268.69	6,273.42	0.00	0.00	0.00
12,600.00	89.69	269.768	5,911.75	-1,179.75	-6,368.69	6,373.42	0.00	0.00	0.00
12,700.00	89.69	269.768	5,912.29	-1,180.15	-6,468.69	6,473.41	0.00	0.00	0.00
12,800.00	89.69	269.768	5,912.84	-1,180.56	-6,568.69	6,573.41	0.00	0.00	0.00
12,900.00	89.69	269.768	5,913.39	-1,180.97	-6,668.68	6,673.41	0.00	0.00	0.00
13,000.00	89.69	269.768	5,913.94	-1,181.37	-6,768.68	6,773.41	0.00	0.00	0.00
13,100.00	89.69	269.768	5,914.49	-1,181.78	-6,868.68	6,873.41	0.00	0.00	0.00
13,200.00	89.69	269.768	5,915.03	-1,182.18	-6,968.68	6,973.41	0.00	0.00	0.00
13,300.00	89.69	269.768	5,915.58	-1,182.59	-7,068.68	7,073.41	0.00	0.00	0.00
13,400.00	89.69	269.768	5,916.13	-1,182.99	-7,168.67	7,173.40	0.00	0.00	0.00
13,500.00	89.69	269.768	5,916.68	-1,183.40	-7,268.67	7,273.40	0.00	0.00	0.00
13,600.00	89.69	269.768	5,917.23	-1,183.80	-7,368.67	7,373.40	0.00	0.00	0.00
13,700.00	89.69	269.768	5,917.77	-1,184.21	-7,468.67	7,473.40	0.00	0.00	0.00
13,800.00	89.69	269.768	5,918.32	-1,184.61	-7,568.66	7,573.40	0.00	0.00	0.00
13,900.00	89.69	269.768	5,918.87	-1,185.02	-7,668.66	7,673.40	0.00	0.00	0.00
14,000.00	89.69	269.768	5,919.42	-1,185.42	-7,768.66	7,773.40	0.00	0.00	0.00
14,100.00	89.69	269.768	5,919.97	-1,185.83	-7,868.66	7,873.39	0.00	0.00	0.00
14,200.00	89.69	269.768	5,920.51	-1,186.23	-7,968.65	7,973.39	0.00	0.00	0.00
14,300.00	89.69	269.768	5,921.06	-1,186.64	-8,068.65	8,073.39	0.00	0.00	0.00
14,400.00	89.69	269.768	5,921.61	-1,187.04	-8,168.65	8,173.39	0.00	0.00	0.00
14,500.00	89.69	269.768	5,922.16	-1,187.45	-8,268.65	8,273.39	0.00	0.00	0.00
14,600.00	89.69	269.768	5,922.70	-1,187.85	-8,368.64	8,373.39	0.00	0.00	0.00
14,700.00	89.69	269.768	5,923.25	-1,188.26	-8,468.64	8,473.38	0.00	0.00	0.00
14,800.00	89.69	269.768	5,923.80	-1,188.66	-8,568.64	8,573.38	0.00	0.00	0.00

Database:	Casper District	Local Co-ordinate Reference:	Well Anschutz Equus Farms 5-61-34-5764B
Company:	Bill Barrett Corp.	TVD Reference:	GL 4479.6' & KB 20' @ 4499.60ft
Project:	Weld County, CO NAD 83	MD Reference:	GL 4479.6' & KB 20' @ 4499.60ft
Site:	Anschutz Equus Farms 5-61-34 NESE	North Reference:	True
Well:	Anschutz Equus Farms 5-61-34-5764B	Survey Calculation Method:	Minimum Curvature
Wellbore:	OH		
Design:	Plan 1		

Planned Survey									
Measured Depth (ft)	Inclination (°)	Azimuth (°)	Vertical Depth (ft)	+N/-S (ft)	+E/-W (ft)	Vertical Section (ft)	Dogleg Rate (°/100ft)	Build Rate (°/100ft)	Turn Rate (°/100ft)
14,900.00	89.69	269.768	5,924.35	-1,189.07	-8,668.64	8,673.38	0.00	0.00	0.00
15,000.00	89.69	269.768	5,924.90	-1,189.47	-8,768.64	8,773.38	0.00	0.00	0.00
15,100.00	89.69	269.768	5,925.44	-1,189.88	-8,868.63	8,873.38	0.00	0.00	0.00
15,200.00	89.69	269.768	5,925.99	-1,190.28	-8,968.63	8,973.38	0.00	0.00	0.00
15,300.00	89.69	269.768	5,926.54	-1,190.69	-9,068.63	9,073.38	0.00	0.00	0.00
15,400.00	89.69	269.768	5,927.09	-1,191.09	-9,168.63	9,173.37	0.00	0.00	0.00
15,500.00	89.69	269.768	5,927.64	-1,191.50	-9,268.62	9,273.37	0.00	0.00	0.00
15,600.00	89.69	269.768	5,928.18	-1,191.90	-9,368.62	9,373.37	0.00	0.00	0.00
15,700.00	89.69	269.768	5,928.73	-1,192.31	-9,468.62	9,473.37	0.00	0.00	0.00
15,800.00	89.69	269.768	5,929.28	-1,192.71	-9,568.62	9,573.37	0.00	0.00	0.00
15,900.00	89.69	269.768	5,929.83	-1,193.12	-9,668.61	9,673.37	0.00	0.00	0.00
16,000.00	89.69	269.768	5,930.37	-1,193.52	-9,768.61	9,773.37	0.00	0.00	0.00
16,100.00	89.69	269.768	5,930.92	-1,193.93	-9,868.61	9,873.36	0.00	0.00	0.00
16,114.18	89.69	269.768	5,931.00	-1,193.98	-9,882.79	9,887.54	0.00	0.00	0.00
TD at 16114.18									

Design Targets									
Target Name	Dip Angle (°)	Dip Dir. (°)	TVD (ft)	+N/-S (ft)	+E/-W (ft)	Northing (usft)	Easting (usft)	Latitude	Longitude
5-61-34-5764B LP - hit/miss target - Shape - Point	0.00	0.000	5,878.00	-1,154.79	-209.03	1,373,625.62	3,365,877.06	40° 21' 5.648 N	104° 11' 13.909 W
5-61-34-5764B PBHL - plan hits target center - Point	0.00	0.000	5,931.00	-1,193.98	-9,882.79	1,373,443.14	3,356,204.97	40° 21' 5.242 N	104° 13' 18.862 W

Plan Annotations				
Measured Depth (ft)	Vertical Depth (ft)	Local Coordinates		Comment
		+N/-S (ft)	+E/-W (ft)	
1,000.00	1,000.00	0.00	0.00	Start Build 2.17
2,451.72	2,379.96	-370.67	116.04	Start 300.50 hold at 2451.72 MD
2,752.22	2,636.34	-520.26	162.86	Start Drop -1.27
5,228.34	4,990.05	-1,152.49	360.78	Start 315.00 hold at 5228.34 MD
5,543.34	5,305.05	-1,152.49	360.78	Start DLS 10.00 TFO 269.77
6,440.20	5,878.00	-1,154.80	-209.03	Start 9673.98 hold at 6440.20 MD
16,114.18	5,931.00	-1,193.98	-9,882.79	TD at 16114.18