

T5N, R61W, 6th P.M.

BILL BARRETT CORPORATION

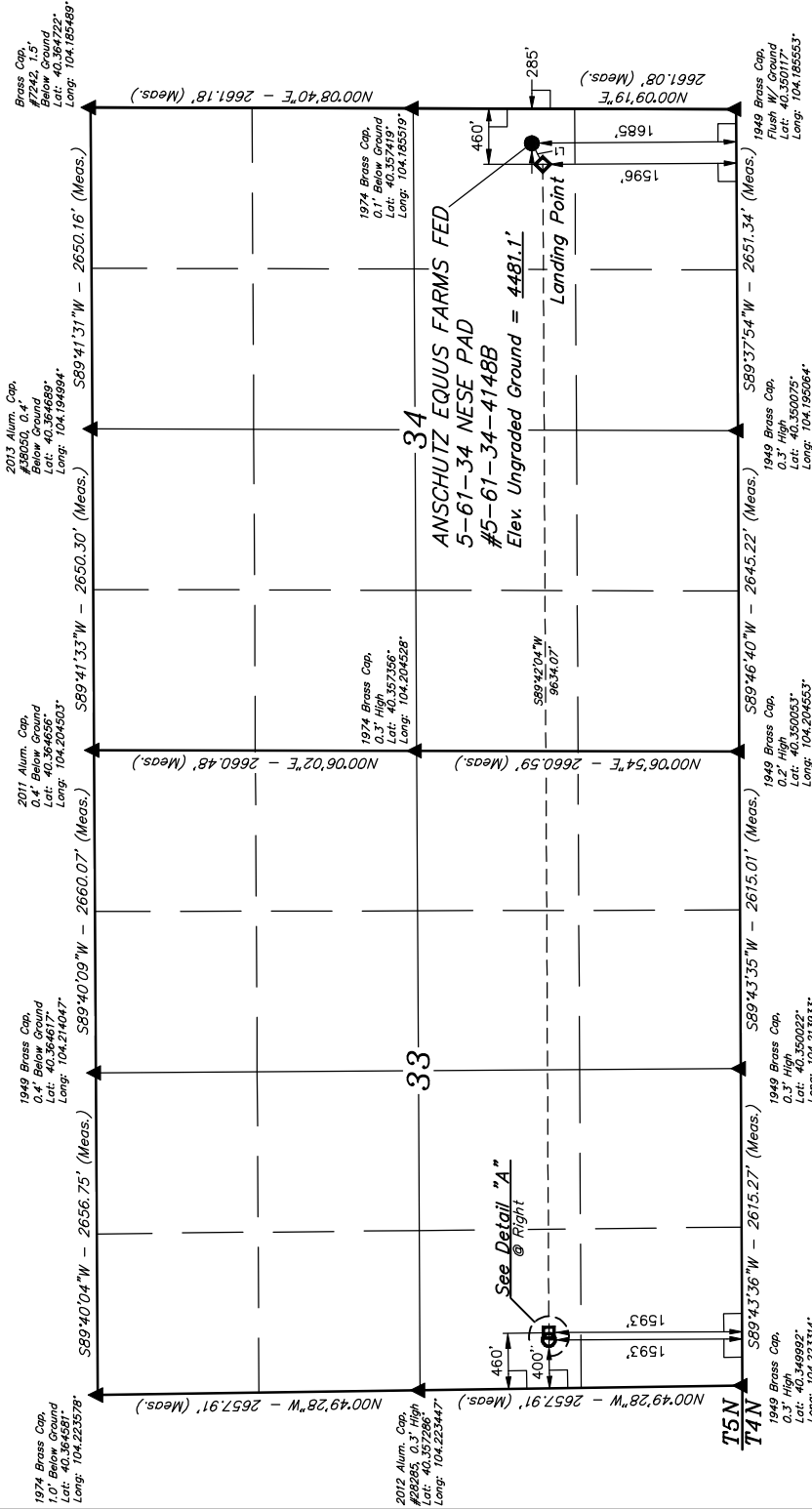
ANSCHUTZ EQUUS FARMS FED 5-61-34 NESE PAD
#5-61-34-4148B
NE 1/4 SE 1/4, SECTION 34, T5N, R61W, 6th P.M.
WELD COUNTY, COLORADO

— BASIS OF BEARINGS —

BASIS OF BEARINGS IS A GPS OBSERVATION

— BASIS OF ELEVATION —

SPOT ELEVATION LOCATED AT THE NORTHEAST CORNER OF SECTION 24, T5N, R62W, 6th P.M. TAKEN FROM THE POINT OF ROCKS, QUADRANGLE, COLORADO, WELD COUNTY, 7.5 MINUTE QUAD (TOPOGRAPHIC MAP) PUBLISHED BY THE UNITED STATES DEPARTMENT OF THE INTERIOR, GEOLOGICAL SURVEY. SAID ELEVATION IS MARKED AS BEING 4550 FEET.

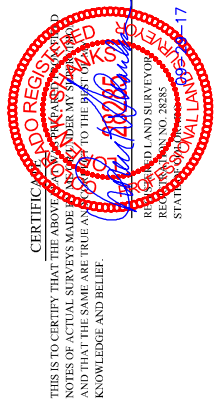


| LINE TABLE | | |
|------------|-------------|---------|
| LINE | DIRECTION | LENGTH |
| L1 | S89°43'36"W | 197.11' |
| L2 | S89°43'36"W | 60.00' |

PDOP = 1.6

LEGEND:

- 90° SYMBOL
- PROPOSED WELL HEAD.
- LANDING POINT.
- BOTTOM OF COMPLETED INTERVAL.
- TARGET BOTTOM HOLE TD.
- SECTION CORNERS LOCATED. (NAD 83)



THIS IS TO CERTIFY THAT THE ABOVE SURVEY WAS MADE BY ME OR UNDER MY CLOSE PERSONAL SUPERVISION AND THAT THE SAME ARE TRUE AND CORRECT TO THE BEST OF MY KNOWLEDGE AND BELIEF.

REV: 2 09-28-17 J.J. (NAME CHANGE)

UINTAH
ENGINEERING & LAND SURVEY, INC.

UELS, LLC
Corporate Office * 85 South 200 East
Vernal, UT 84078 * (435) 789-1017

| | | | |
|--------------------|-------------------------|----------|------------|
| SURVEYED BY | JARED CHRISTOPHER, T.M. | 05-22-17 | SCALE |
| DRAWN BY | C.C. | 07-11-17 | 1" = 1000' |
| WELL LOCATION PLAT | | | |