

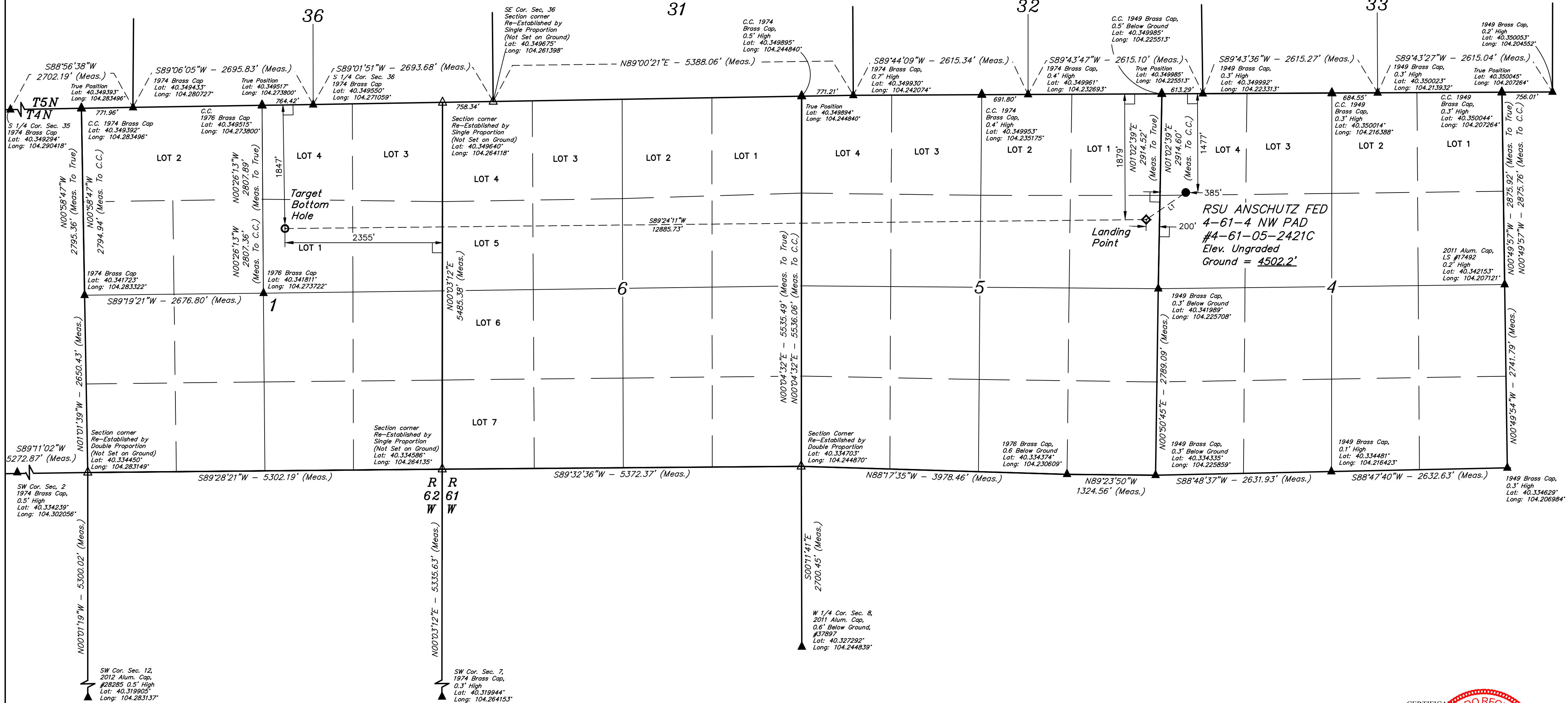
T4N, R61W, 6th P.M.

**BILL BARRETT CORPORATION**  
RSU ANSCHUTZ FED #4-61-4 NW PAD  
#4-61-05-2421C  
NW 1/4 NW 1/4, SECTION 4, T4N, R61W, 6th P.M.  
WELD COUNTY, COLORADO

**BASIS OF BEARINGS**  
BASIS OF BEARINGS IS A G.P.S. OBSERVATION

**BASIS OF ELEVATION**  
SPOT ELEVATION LOCATED AT THE NORTHEAST CORNER OF SECTION 24, T5N, R62W, 6th P.M. TAKEN FROM THE POINT OF ROCKS, QUADRANGLE, COLORADO, WELD COUNTY, 7.5 MINUTE QUAD (TOPOGRAPHIC MAP) PUBLISHED BY THE UNITED STATES DEPARTMENT OF THE INTERIOR, GEOLOGICAL SURVEY. SAID ELEVATION IS MARKED AS BEING 4530 FEET.

LINE TABLE		
LINE	DIRECTION	LENGTH
L1	S55°37'39"W	717.89'



**LEGEND:**

- = 90° SYMBOL
- = PROPOSED WELLHEAD.
- ◇ = LANDING POINT
- = TARGET BOTTOM HOLE.
- ▲ = SECTION CORNERS LOCATED. (NAD 83)
- △ = SECTION CORNERS RE-ESTABLISHED. (Not Set on Ground.) (NAD 83)

PDOP = 1.3

NAD 83 (SURFACE LOCATION)	NAD 83 (LANDING POINT)	NAD 83 (TARGET BOTTOM HOLE)
LATITUDE = 40°20'45.37" (40.345937)	LATITUDE = 40°20'41.37" (40.344826)	LATITUDE = 40°20'40.06" (40.344463)
LONGITUDE = 104°13'27.23" (104.224230)	LONGITUDE = 104°13'34.88" (104.226356)	LONGITUDE = 104°16'21.35" (104.272370)
NAD 27 (SURFACE LOCATION)	NAD 27 (LANDING POINT)	NAD 27 (TARGET BOTTOM HOLE)
LATITUDE = 40°20'45.44" (40.345956)	LATITUDE = 40°20'41.44" (40.344844)	LATITUDE = 40°20'40.13" (40.344481)
LONGITUDE = 104°13'25.41" (104.223724)	LONGITUDE = 104°13'33.06" (104.225850)	LONGITUDE = 104°16'19.43" (104.272064)
STATE PLANE NAD 83 (CO. NORTH)	STATE PLANE NAD 83 (CO. NORTH)	STATE PLANE NAD 83 (CO. NORTH)
N: 1371423.59 E: 3355586.21	N: 1371010.16 E: 3354999.54	N: 1370696.09 E: 3342121.01
STATE PLANE NAD 27 (CO. NORTH)	STATE PLANE NAD 27 (CO. NORTH)	STATE PLANE NAD 27 (CO. NORTH)
N: 371425.72 E: 2355736.54	N: 371012.31 E: 2355149.86	N: 370698.23 E: 2342271.14

CERTIFICATE OF SURVEY  
THIS IS TO CERTIFY THAT THE ABOVE SURVEY WAS MADE BY ME OR UNDER MY SUPERVISION AND THAT THE SAME ARE TRUE AND CORRECT TO THE BEST OF MY KNOWLEDGE AND BELIEF.  
REGISTERED LAND SURVEYOR  
REGISTRATION NO. 28285  
STATE OF COLORADO  
JULY 12, 2018

**UWELLS, LLC**  
Corporate Office \* 85 South 200 East  
Vernal, UT 84078 \* (435) 789-1017

**SURVEYED BY** ROBERT FISHER  
**DRAWN BY** D.J.W.

06-15-17  
01-22-18

**SCALE**  
1" = 1000'

**WELL LOCATION PLAT**