

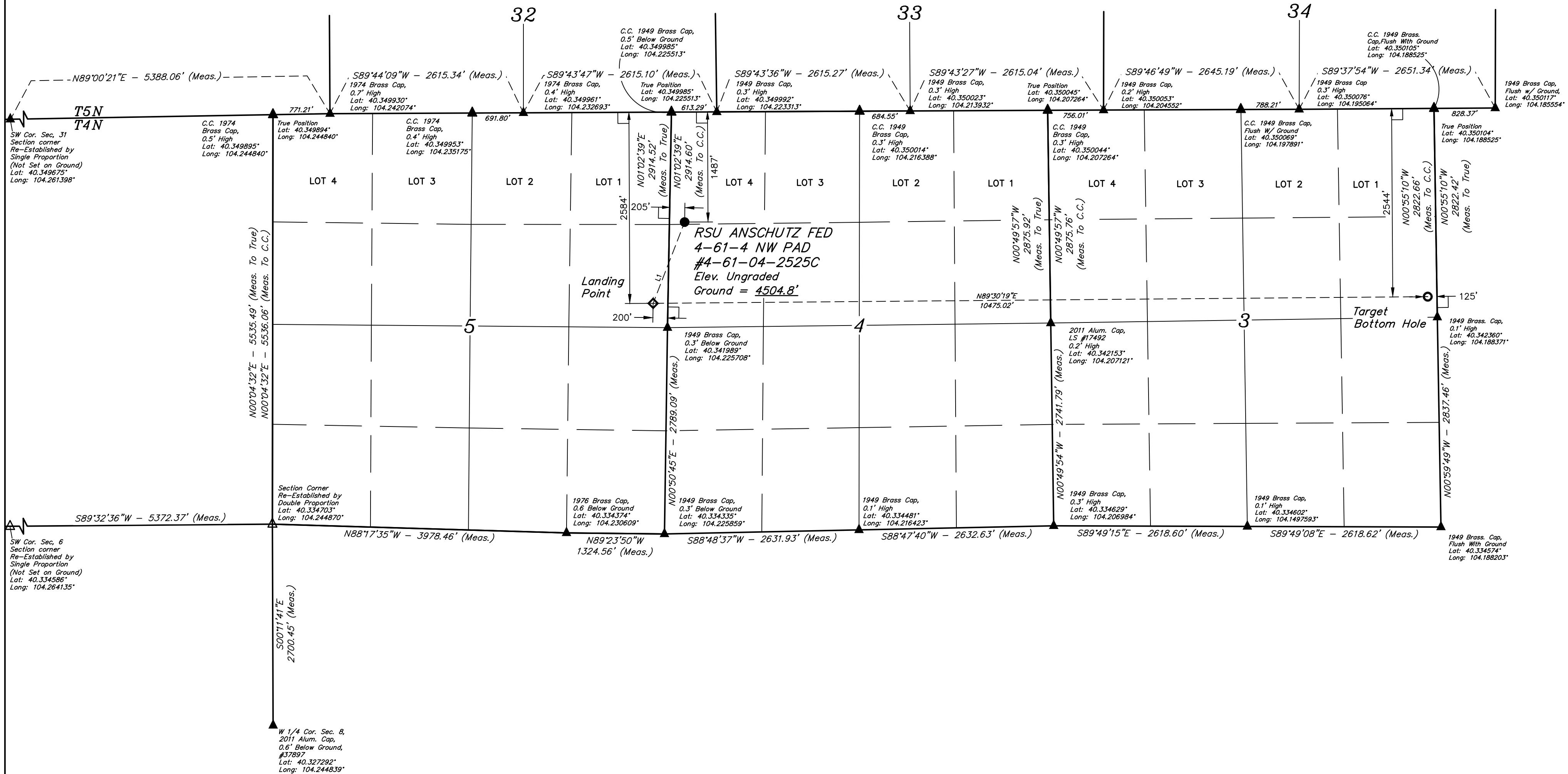
T4N, R61W, 6th P.M.

BILL BARRETT CORPORATION
RSU ANSCHUTZ FED #4-61-4 NW PAD
#4-61-04-2525C
NW 1/4 NW 1/4, SECTION 4, T4N, R61W, 6th P.M.
WELD COUNTY, COLORADO

BASIS OF BEARINGS
BASIS OF BEARINGS IS A G.P.S. OBSERVATION

BASIS OF ELEVATION
SPOT ELEVATION LOCATED AT THE NORTHEAST CORNER OF SECTION 24, T5N, R62W, 6th P.M. TAKEN FROM THE POINT OF ROCKS, QUADRANGLE, COLORADO, WELD COUNTY, 7.5 MINUTE QUAD (TOPOGRAPHIC MAP) PUBLISHED BY THE UNITED STATES DEPARTMENT OF THE INTERIOR, GEOLOGICAL SURVEY. SAID ELEVATION IS MARKED AS BEING 4530 FEET.

LINE TABLE		
LINE	DIRECTION	LENGTH
L1	S21°09'18"W	1178.04'



LEGEND:

- = 90° SYMBOL
- = PROPOSED WELLHEAD.
- ◆ = LANDING POINT
- = TARGET BOTTOM HOLE.
- ▲ = SECTION CORNERS LOCATED. (NAD 83)
- △ = SECTION CORNERS RE-ESTABLISHED. (Not Set on Ground.) (NAD 83)

NAD 83 (SURFACE LOCATION)	NAD 83 (LANDING POINT)	NAD 83 (TARGET BOTTOM HOLE)
LATITUDE = 40°20'45.28" (40.345905)	LATITUDE = 40°20'34.41" (40.342891)	LATITUDE = 40°20'35.24" (40.343121)
LONGITUDE = 104°13'29.56" (104.224877)	LONGITUDE = 104°13'35.05" (104.226403)	LONGITUDE = 104°11'19.81" (104.188835)
NAD 27 (SURFACE LOCATION)	NAD 27 (LANDING POINT)	NAD 27 (TARGET BOTTOM HOLE)
LATITUDE = 40°20'45.33" (40.345924)	LATITUDE = 40°20'34.47" (40.342909)	LATITUDE = 40°20'35.30" (40.343140)
LONGITUDE = 104°13'27.73" (104.224371)	LONGITUDE = 104°13'33.23" (104.225897)	LONGITUDE = 104°11'17.98" (104.188329)
STATE PLANE NAD 83 (CO. NORTH)	STATE PLANE NAD 83 (CO. NORTH)	STATE PLANE NAD 83 (CO. NORTH)
N: 1371409.36 E: 3355406.19	N: 1370305.17 E: 3354996.54	N: 1370541.78 E: 3365466.14
STATE PLANE NAD 27 (CO. NORTH)	STATE PLANE NAD 27 (CO. NORTH)	STATE PLANE NAD 27 (CO. NORTH)
N: 371411.49 E: 2355556.52	N: 370307.33 E: 2355146.86	N: 370543.92 E: 2365616.74

CERTIFICATE OF RECORDING
THIS IS TO CERTIFY THAT THE ABOVE DESCRIBED SURVEY WAS MADE IN ACCORDANCE WITH THE NOTES OF ACTUAL SURVEYS MADE BY ME UNDER MY SUPERVISION AND THAT THE SAME ARE TRUE AND CORRECT TO THE BEST OF MY KNOWLEDGE AND BELIEF.
REGISTERED LAND SURVEYOR
REGISTRATION NO. 28285
STATE OF COLORADO
JUL 18 2028

PDOP = 1.3

REV: 1 02-28-18 C.C. (REMOVED RANGE LABEL)

UINTEAH
ENGINEERING & LAND SURVEYING
SURVEYED BY: ROBERT FISHER
DRAWN BY: D.J.W.
Corporate Office * 85 South 200 East
Vernal, UT 84078 * (435) 789-1017
06-15-17
01-22-18
SCALE
1" = 1000'
WELL LOCATION PLAT