

T8N, R60W, 6th P.M.

BISON OIL & GAS II

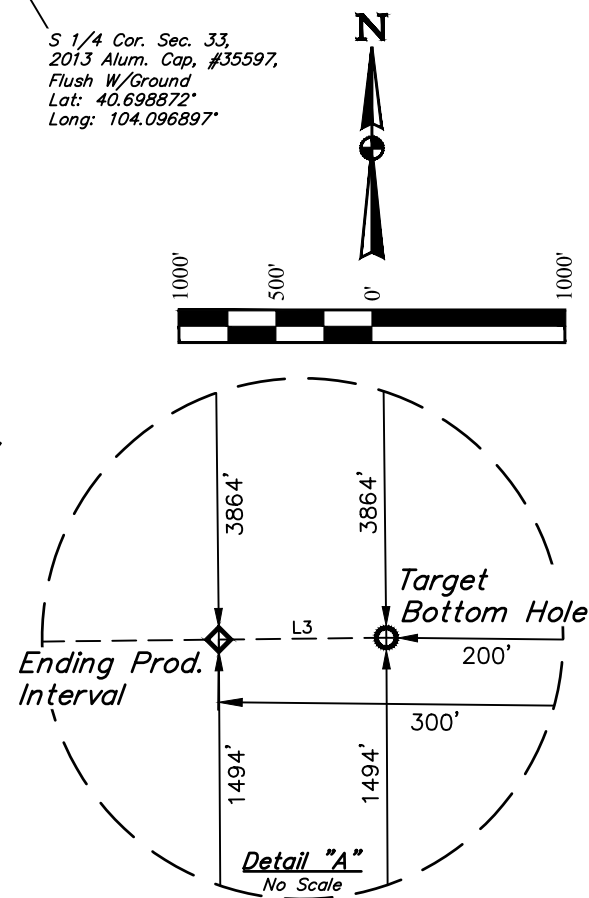
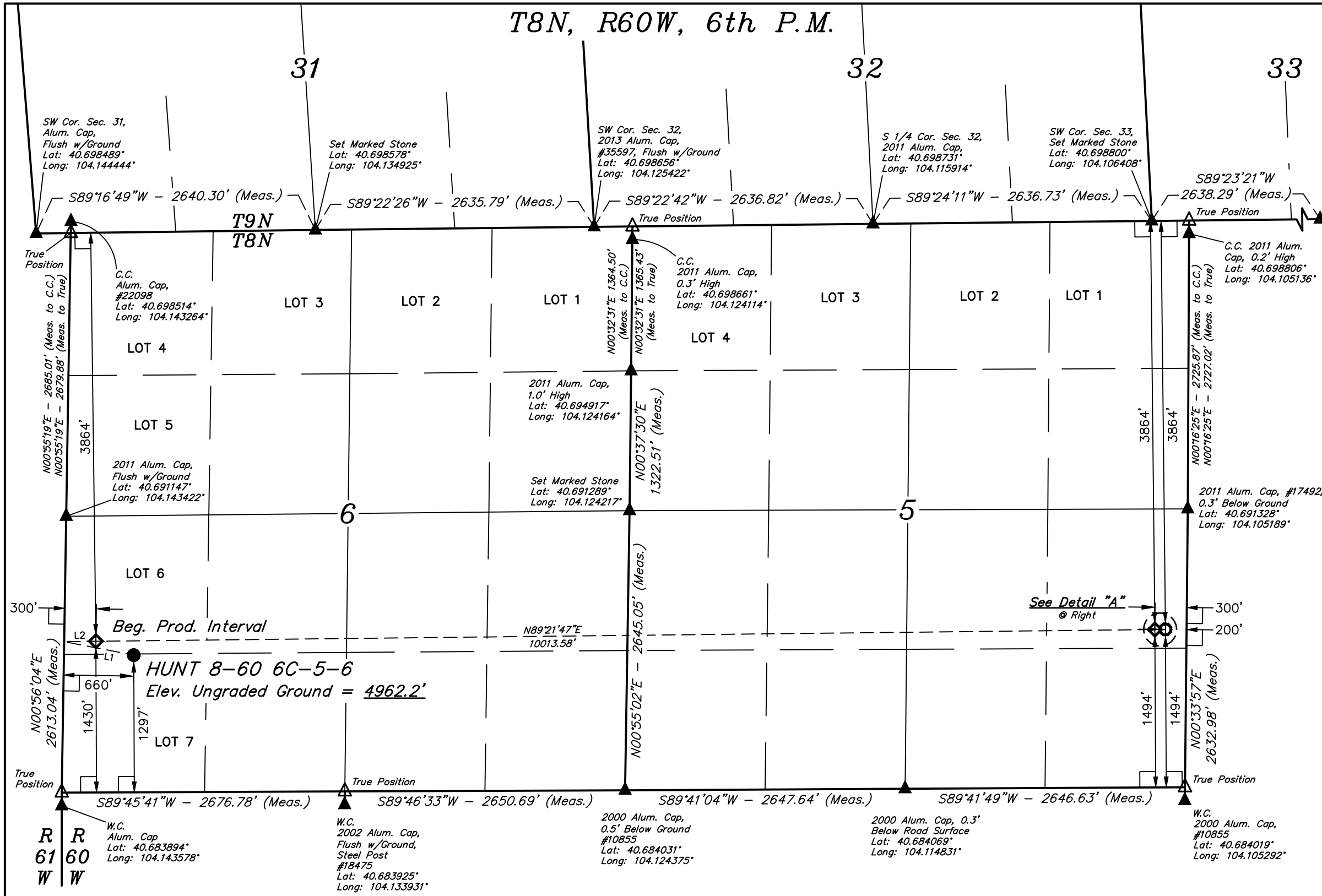
HUNT 8-60 6C-5-6
LOT 7, SECTION 6, T8N, R60W, 6th P.M.
WELD COUNTY, COLORADO

BASIS OF BEARINGS

BASIS OF BEARINGS IS A G.P.S. OBSERVATION

BASIS OF ELEVATION

SPOT ELEVATION LOCATED AT THE NORTHEAST CORNER OF SECTION 2, T9N, R61W, 6th P.M., TAKEN FROM THE GROVER SOUTH, QUADRANGLE, COLORADO, WELD COUNTY, 7.5 MINUTE QUAD (TOPOGRAPHICAL MAP) PUBLISHED BY THE UNITED STATES DEPARTMENT OF THE INTERIOR, GEOLOGICAL SURVEY. SAID ELEVATION IS MARKED AS BEING 5043 FEET.



CERTIFICATE OF REGISTRATION

THIS IS TO CERTIFY THAT THE ABOVE PLAT WAS PREPARED FROM THE NOTES OF ACTUAL SURVEYS MADE BY ME OR UNDER MY SUPERVISION AND THAT THE SAME ARE TRUE AND ACCURATE TO THE BEST OF MY KNOWLEDGE AND BELIEF.

REGISTERED LAND SURVEYOR

REGISTRATION NO. 28285

STATE OF COLORADO

03-05-18

- LEGEND:**
- = 90° SYMBOL
 - = PROPOSED WELLHEAD.
 - = PRODUCTION INTERVAL.
 - = TARGET BOTTOM HOLE.
 - = SECTION CORNERS LOCATED. (NAD 83)
 - = SECTION CORNERS RE-ESTABLISHED. (Not Set on Ground.) (NAD 83)

| LINE TABLE | | | SURFACE LOCATION 1297' FSL 660' FWL | BEG. PROD. INTERVAL 3864' FNL 1430' FSL 300' FWL | ENDING PROD. INTERVAL 3864' FNL 1494' FSL 300' FEL | TARGET BOTTOM HOLE 3864' FNL 1494' FSL 200' FEL |
|------------|-------------|---------|--|---|---|--|
| LINE | DIRECTION | LENGTH | NAD 83 (SURFACE LOCATION) LATITUDE = 40°41'15.16" (40.687544) LONGITUDE = 104°08'28.03" (104.141119) | NAD 83 (BEG. PROD. INTERVAL) LATITUDE = 40°41'16.45" (40.687904) LONGITUDE = 104°08'32.68" (104.142411) | NAD 83 (ENDING PROD. INTERVAL) LATITUDE = 40°41'17.51" (40.688197) LONGITUDE = 104°06'22.73" (104.106315) | NAD 83 (TARGET BOTTOM HOLE) LATITUDE = 40°41'17.52" (40.688200) LONGITUDE = 104°06'21.44" (104.105954) |
| L1 | N79°02'06"W | 670.32' | NAD 27 (SURFACE LOCATION) LATITUDE = 40°41'15.21" (40.687558) LONGITUDE = 104°08'26.22" (104.140617) | NAD 27 (BEG. PROD. INTERVAL) LATITUDE = 40°41'16.51" (40.687919) LONGITUDE = 104°08'30.87" (104.141907) | NAD 27 (ENDING PROD. INTERVAL) LATITUDE = 40°41'17.56" (40.688211) LONGITUDE = 104°06'20.92" (104.105811) | NAD 27 (TARGET BOTTOM HOLE) LATITUDE = 40°41'17.57" (40.688214) LONGITUDE = 104°06'19.62" (104.105450) |
| L2 | N89°21'47"E | 300.11' | STATE PLANE NAD 83 (CO. NORTH) N: 1496203.22 E: 3376841.91 | STATE PLANE NAD 83 (CO. NORTH) N: 1496328.62 E: 3376482.09 | STATE PLANE NAD 83 (CO. NORTH) N: 1496590.73 E: 3386489.71 | STATE PLANE NAD 83 (CO. NORTH) N: 1496593.35 E: 3386589.67 |
| L3 | N89°21'47"E | 100.02' | STATE PLANE NAD 27 (CO. NORTH) N: 496202.03 E: 2376991.68 | STATE PLANE NAD 27 (CO. NORTH) N: 496327.43 E: 2376631.85 | STATE PLANE NAD 27 (CO. NORTH) N: 496589.39 E: 2386639.76 | STATE PLANE NAD 27 (CO. NORTH) N: 496592.01 E: 2386739.73 |

PDOP = 1.4



UINTEAH
ENGINEERING & LAND SURVEYING

UELS, LLC
Corporate Office * 85 South 200 East
Vernal, UT 84078 * (435) 789-1017

| | | | |
|-------------|------------------------|----------|------------|
| SURVEYED BY | JAMES FRESHWATER, G.B. | 10-24-17 | SCALE |
| DRAWN BY | C.C. | 02-28-18 | 1" = 1000' |

WELL LOCATION PLAT