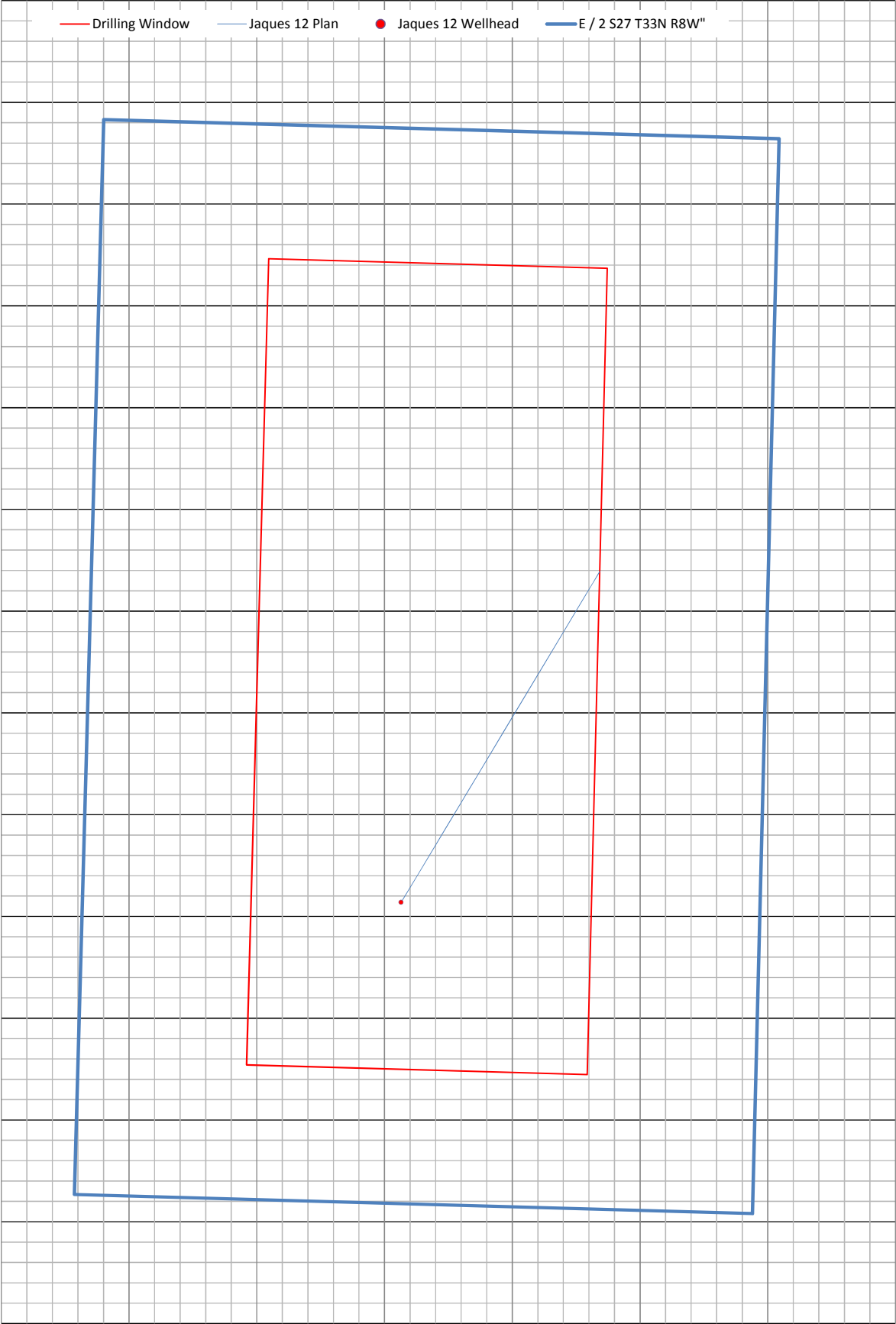


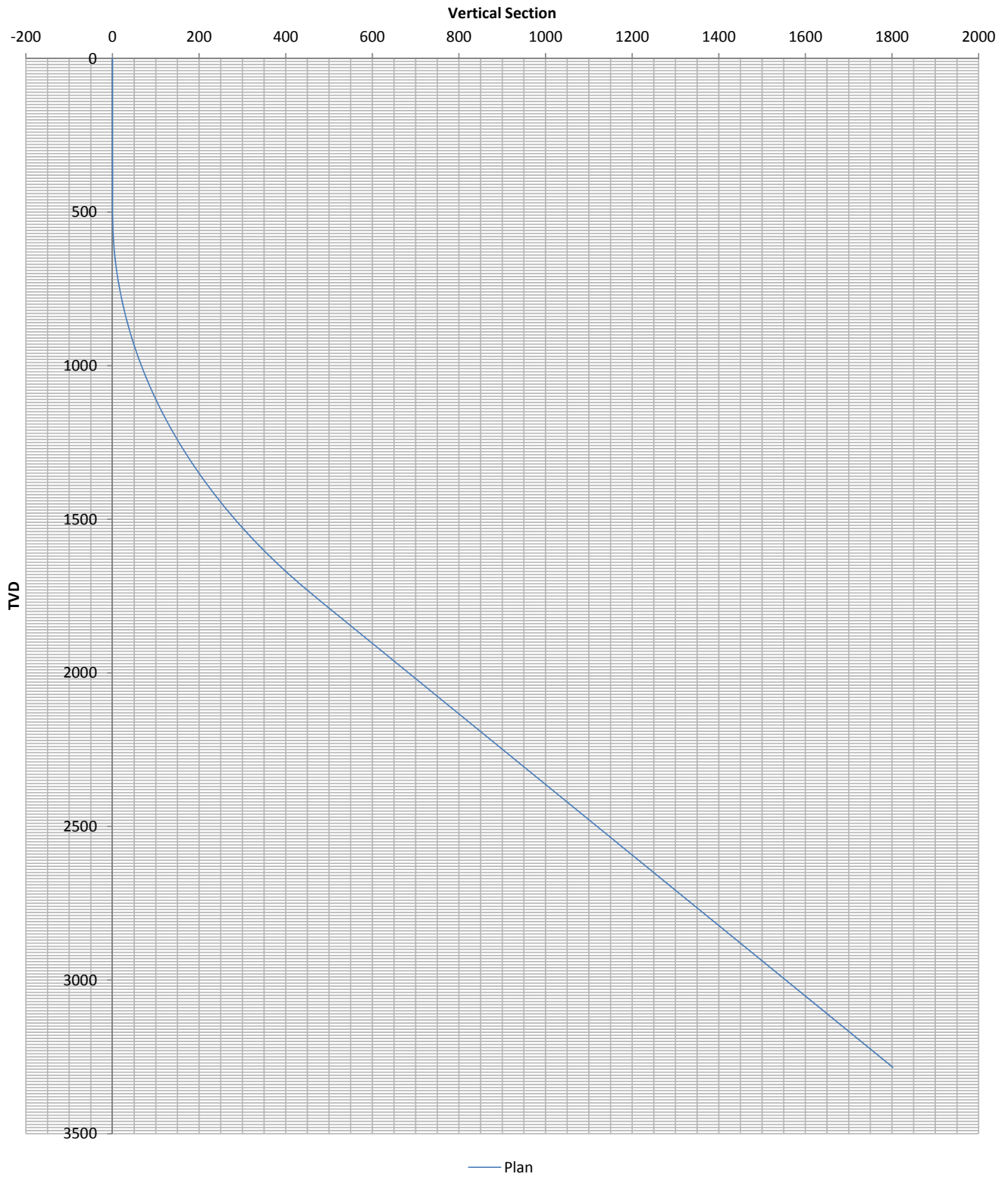
**Ignacio Blanco, Jaques Sec 27
Fruitland Coal
Jaques 12
Plan #1**

**Catamount Energy Partners
Proposal Report**

Section Drawing- Jaques 12



Jaques 12 VS View



Catamount Energy Partners

Proposal Report



Database:	San Juan Basin	Local Coordinate Reference:	Map Coordinates
Company:		TVD Reference:	Mean Sea Level
Project:	Jaques Sec 27	MD Reference:	Jaques 12
Site:	Fruitland Coal	North reference:	Grid North
Well:	Jaques 12	Survey Calculation Method:	Minimum Curvature
Wellbore:			
Proposal:	Plan #1		

Project	Jaques Sec 27		
Map System:	NAD83 Colorado State Planes	System Datum:	Mean Sea Level
Geo Datum:	NAD 1983		
Map Zone:	Southern Zone		

Site	Fruitland Coal		
Site Position:		Northing:	0
From:	Map	Easting:	0
Position Uncertainty:	0ft	Slot Radius:	0in
		Latitude:	33.48902771° N
		Longitude:	115.33027986° W
		Grid Convergence:	-6.0°

Well	Jaques 12		
Well Position:	+N/-S	1,155,069ft	Northing:
	+E/-W	2,358,065ft	Easting:
Position Uncertainty:		1ft	Wellhead Elevation:
			6,744ft
			Latitude:
			37.07177125° N
			Longitude:
			107.70036323° W
			Ground Level:
			6,728ft

Magnetics	Model Name	Sample Date	Declination (°)	Dip Angle (°)	Field Strength (nT)
	User Defined	2/2/2018	0.0	0.0	0.0

Proposal	Plan #1		
Audit Notes:			
Version:		Phase:	Tie On Depth:
			0ft

Vertical Section:	Depth from TVD (ft)	+N/-S (ft)	+E/-W (ft)	Direction (°)
	0	0	0	25.6

Survey Program		2/5/2018		
From (ft)	To (ft)	Survey (Wellbore)	Tool Name	Description
0	3,897	Plan #1	MWD	MWD

Plan Sections										
Measured Depth (ft)	Inclination (°)	Azimuth (°)	Vertical Depth (ft)	+N/-S (ft)	+E/-W (ft)	Dogleg Rate (°/100ft)	Build Rate (°/100ft)	Turn Rate (°/100ft)	TFO (°)	Target
0	0.0	0.0	0	0	0					
500	0.0	0.0	500	0	0	0.0	0.0	0.0	0.0	
1,868	41.1	25.6	1,754	424	203	3.0	3.0	0.0	25.6	
3,897	41.1	25.6	3,284	1,626	777	0.0	0.0	0.0	0.0	TD

Planned Survey											
Measured Depth (ft)	Incl. (°)	Az. (°)	Vertical Depth (ft)	Sub Sea Depth (ft)	+N/-S (ft)	+E/-W (ft)	Vertical Section (ft)	Closure Distance (ft)	Closure Azimuth (°)	Dogleg Rate (°/100ft)	Comments/ Formations
0	0.0	0.0	0	-6,744	0	0	0	0	0.0	0.0	MWD
100	0.0	0.0	100	-6,644	0	0	0	0	0.0	0.0	
200	0.0	0.0	200	-6,544	0	0	0	0	0.0	0.0	
300	0.0	0.0	300	-6,444	0	0	0	0	0.0	0.0	
400	0.0	0.0	400	-6,344	0	0	0	0	0.0	0.0	
500	0.0	0.0	500	-6,244	0	0	0	0	0.0	0.0	
500	0.0	0.0	500	-6,244	0	0	0	0	0.0	0.0	
600	3.0	25.6	600	-6,144	2	1	3	3	25.6	3.0	
700	6.0	25.6	700	-6,044	9	5	10	10	25.6	3.0	
800	9.0	25.6	799	-5,945	21	10	24	24	25.6	3.0	

Catamount Energy Partners

Proposal Report



Database:	San Juan Basin	Local Coordinate Reference:	Map Coordinates
Company:		TVD Reference:	Mean Sea Level
Project:	Jaques Sec 27	MD Reference:	Jaques 12
Site:	Fruitland Coal	North reference:	Grid North
Well:	Jaques 12	Survey Calculation Method:	Minimum Curvature
Wellbore:			
Proposal:	Plan #1		

Planned Survey											
Measured Depth (ft)	Incl. (°)	Az. (°)	Vertical Depth (ft)	Sub Sea Depth (ft)	+N/-S (ft)	+E/-W (ft)	Vertical Section (ft)	Closure Distance (ft)	Closure Azimuth (°)	Dogleg Rate (°/100ft)	Comments/ Formations
900	12.0	25.6	897	-5,847	38	18	42	42	25.6	3.0	
1,000	15.0	25.6	994	-5,750	59	28	65	65	25.6	3.0	
1,100	18.0	25.6	1,090	-5,654	84	40	93	93	25.6	3.0	
1,200	21.0	25.6	1,184	-5,560	114	55	127	127	25.6	3.0	
1,300	24.0	25.6	1,277	-5,467	149	71	165	165	25.6	3.0	
1,400	27.0	25.6	1,367	-5,377	188	90	208	208	25.6	3.0	
1,500	30.0	25.6	1,455	-5,289	231	110	256	256	25.6	3.0	
1,600	33.0	25.6	1,540	-5,204	278	133	308	308	25.6	3.0	
1,700	36.0	25.6	1,623	-5,121	329	157	365	365	25.6	3.0	
1,722	36.6	25.6	1,640	-5,104	341	163	378	378	25.6	3.0	Animas
1,800	39.0	25.6	1,702	-5,042	384	184	426	426	25.6	3.0	
1,868	41.1	25.6	1,754	-4,990	424	203	470	470	25.6	3.0	
1,900	41.1	25.6	1,778	-4,966	442	211	490	490	25.6	0.0	
2,000	41.1	25.6	1,854	-4,890	502	240	556	556	25.6	0.0	
2,095	41.1	25.6	1,925	-4,819	558	267	618	618	25.6	0.0	Kirtland Shale
2,100	41.1	25.6	1,929	-4,815	561	268	622	622	25.6	0.0	
2,200	41.1	25.6	2,004	-4,740	620	296	687	687	25.6	0.0	
2,300	41.1	25.6	2,080	-4,664	679	325	753	753	25.6	0.0	
2,390	41.1	25.6	2,148	-4,596	733	350	812	812	25.6	0.0	Farmington SS
2,400	41.1	25.6	2,155	-4,589	739	353	819	819	25.6	0.0	
2,500	41.1	25.6	2,231	-4,513	798	381	884	884	25.6	0.0	
2,600	41.1	25.6	2,306	-4,438	857	410	950	950	25.6	0.0	
2,700	41.1	25.6	2,381	-4,363	916	438	1,016	1,016	25.6	0.0	
2,800	41.1	25.6	2,457	-4,287	976	466	1,081	1,081	25.6	0.0	
2,900	41.1	25.6	2,532	-4,212	1,035	495	1,147	1,147	25.6	0.0	
3,000	41.1	25.6	2,608	-4,136	1,094	523	1,213	1,213	25.6	0.0	
3,022	41.1	25.6	2,624	-4,120	1,107	529	1,227	1,227	25.6	0.0	Lower Kirtland Shale
3,100	41.1	25.6	2,683	-4,061	1,153	551	1,278	1,278	25.6	0.0	
3,200	41.1	25.6	2,758	-3,986	1,213	580	1,344	1,344	25.6	0.0	
3,300	41.1	25.6	2,834	-3,910	1,272	608	1,410	1,410	25.6	0.0	
3,400	41.1	25.6	2,909	-3,835	1,331	636	1,475	1,475	25.6	0.0	
3,457	41.1	25.6	2,952	-3,792	1,365	652	1,513	1,513	25.6	0.0	Upper Fruitland Coal
3,500	41.1	25.6	2,985	-3,759	1,390	665	1,541	1,541	25.6	0.0	
3,600	41.1	25.6	3,060	-3,684	1,450	693	1,607	1,607	25.6	0.0	
3,605	41.1	25.6	3,064	-3,680	1,453	694	1,610	1,610	25.6	0.0	Main Fruitland Coal
3,698	41.1	25.6	3,134	-3,610	1,508	721	1,671	1,671	25.6	0.0	Pictured Cliffs
3,700	41.1	25.6	3,136	-3,608	1,509	721	1,672	1,672	25.6	0.0	
3,800	41.1	25.6	3,211	-3,533	1,568	750	1,738	1,738	25.6	0.0	
3,897	41.1	25.6	3,284	-3,460	1,626	777	1,802	1,802	25.6	0.0	TD

Targets									
Target Name	Dip Angle (°)	Dip Dir. (°)	TVD (ft)	+N/-S (ft)	+E/-W (ft)	Northing (ft)	Easting (ft)	Latitude	Longitude
-hit/miss target									
-Shape									
TD			3,284	1,626	777	+1,156,695	+2,358,842	37.07628480° N	107.69783152° W
- proposal hits the target center									
- Point									

Catamount Energy Partners

Proposal Report



Database:	San Juan Basin	Local Coordinate Reference:	Map Coordinates
Company:		TVD Reference:	Mean Sea Level
Project:	Jaques Sec 27	MD Reference:	Jaques 12
Site:	Fruitland Coal	North reference:	Grid North
Well:	Jaques 12	Survey Calculation Method:	Minimum Curvature
Wellbore:			
Proposal:	Plan #1		

Formations					
Measured Depth (ft)	Vertical Depth (ft)	Subsea Depth (ft)	Name	Dip Angle (°)	Dip Direction (°)
1,722	-5,104	-5,104	Animas	0.0	0.0
2,095	-4,819	-4,819	Kirtland Shale	0.0	0.0
2,390	-4,596	-4,596	Farmington SS	0.0	0.0
3,022	-4,120	-4,120	Lower Kirtland Shale	0.0	0.0
3,457	-3,792	-3,792	Upper Fruitland Coal	0.0	0.0
3,605	-3,680	-3,680	Main Fruitland Coal	0.0	0.0
3,698	-3,610	-3,610	Pictured Cliffs	0.0	0.0

Checked By:	Approved By:	Date:
-------------	--------------	-------

Disclaimer Notice

Catamount Energy Partners makes no warranty of any kind with respect to the subject matter included herein or the completeness or accuracy of this document.

Catamount Energy Partners are not responsible for any actions (or lack thereof) taken as a result of relying on or in any way using information contained in this document and in no event shall be liable for any damages resulting from reliance on or use of this information.