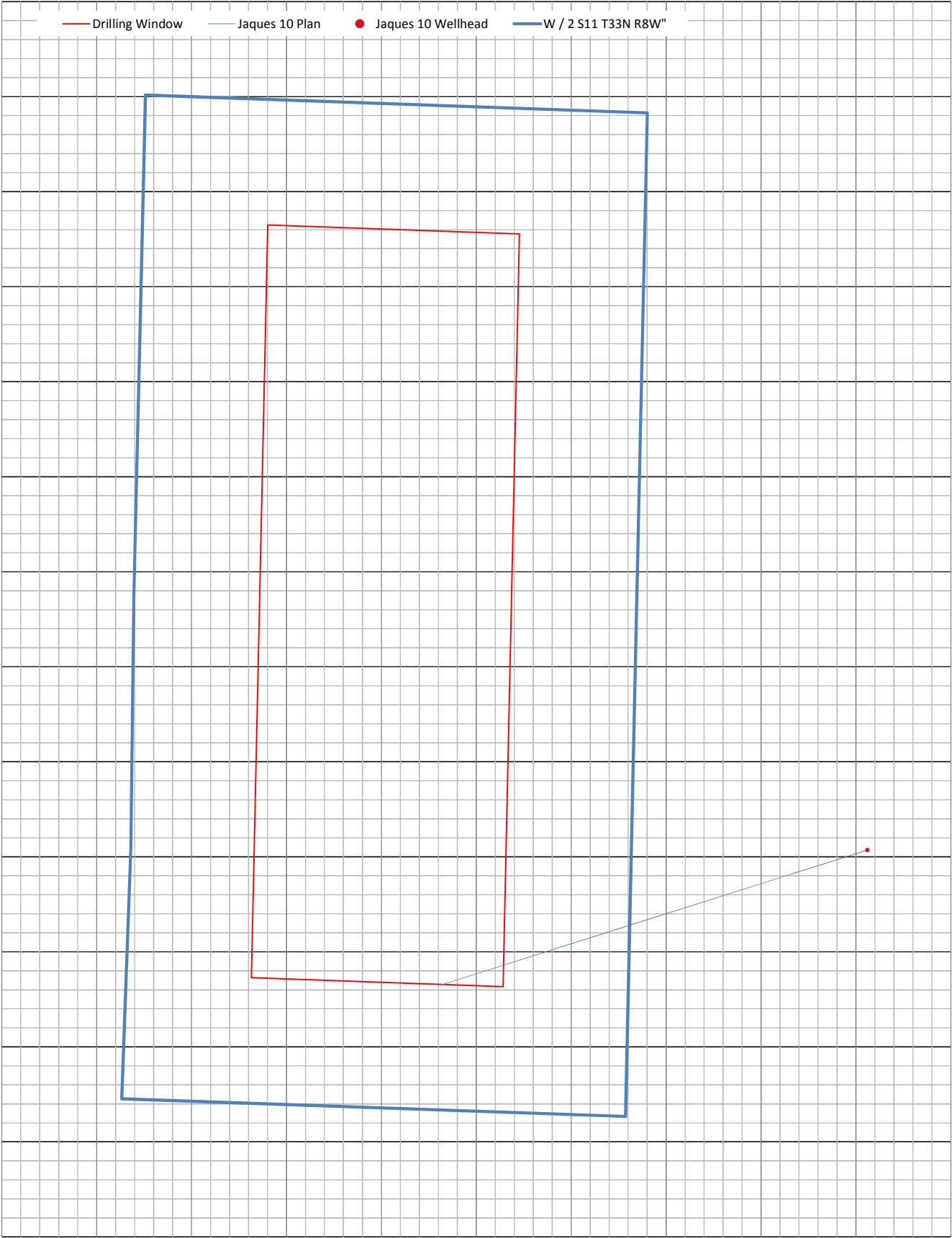


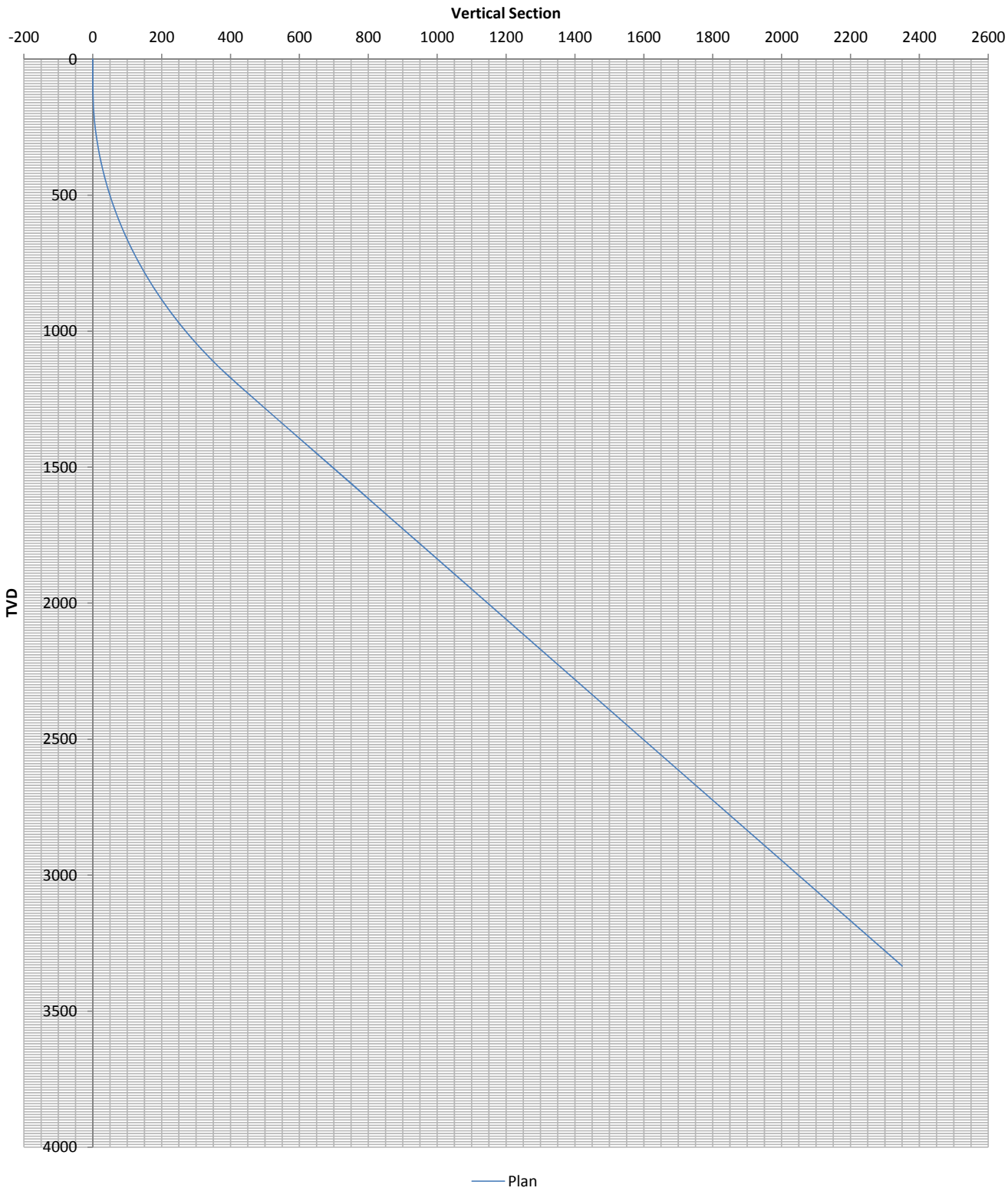
**Ignacio Blanco, Jaques Sec 27
Fruitland Coal
Jaques 10
Plan #1**

**Catamount Energy Partners
Proposal Report**

Section Drawing- Jaques 10



Jaques 10 VS View



Catamount Energy Partners

Proposal Report



Database:	San Juan Basin	Local Coordinate Reference:	Map Coordinates
Company:		TVD Reference:	Mean Sea Level
Project:	Jaques Sec 27	MD Reference:	Jaques 10
Site:	Fruitland Coal	North reference:	Grid North
Well:	Jaques 10	Survey Calculation Method:	Minimum Curvature
Wellbore:			
Proposal:	Plan #1		

Project	Jaques Sec 27		
Map System:	NAD83 Colorado State Planes	System Datum:	Mean Sea Level
Geo Datum:	NAD 1983		
Map Zone:	Southern Zone		

Site	Fruitland Coal		
Site Position:		Northing:	0
From:	Map	Easting:	0
Position Uncertainty:	0ft	Slot Radius:	0in
		Latitude:	33.48902771° N
		Longitude:	115.33027986° W
		Grid Convergence:	-6.0°

Well	Jaques 10		
Well Position:	+N/-S	1,155,036ft	Northing:
	+E/-W	2,358,061ft	Easting:
Position Uncertainty:		1ft	Wellhead Elevation:
			6,744ft
			Latitude:
			37.07167938° N
			Longitude:
			107.70037527° W
			Ground Level:
			6,728ft

Magnetics	Model Name	Sample Date	Declination (°)	Dip Angle (°)	Field Strength (nT)
	WMM 2015	2/2/2018	9.2	63.6	50181.9

Proposal	Plan #1		
Audit Notes:			
Version:		Phase:	Tie On Depth:
			0ft

Vertical Section:	Depth from TVD (ft)	+N/-S (ft)	+E/-W (ft)	Direction (°)
	0	0	0	252.4

Survey Program		2/5/2018		
From (ft)	To (ft)	Survey (Wellbore)	Tool Name	Description
0	4,181	Plan #1	MWD	MWD

Plan Sections										
Measured Depth (ft)	Inclination (°)	Azimuth (°)	Vertical Depth (ft)	+N/-S (ft)	+E/-W (ft)	Dogleg Rate (°/100ft)	Build Rate (°/100ft)	Turn Rate (°/100ft)	TFO (°)	Target
0	0.0	0.0	0	0	0					
100	0.0	0.0	100	0	0	0.0	0.0	0.0	0.0	
1,302	42.1	252.4	1,197	-127	-402	3.5	3.5	0.0	-107.6	
4,181	42.1	252.4	3,334	-709	-2,241	0.0	0.0	0.0	0.0	TD

Planned Survey											
Measured Depth (ft)	Incl. (°)	Az. (°)	Vertical Depth (ft)	Sub Sea Depth (ft)	+N/-S (ft)	+E/-W (ft)	Vertical Section (ft)	Closure Distance (ft)	Closure Azimuth (°)	Dogleg Rate (°/100ft)	Comments/ Formations
0	0.0	0.0	0	-6,744	0	0	0	0	0.0	0.0	MWD
100	0.0	0.0	100	-6,644	0	0	0	0	0.0	0.0	
100	0.0	0.0	100	-6,644	0	0	0	0	0.0	0.0	
200	3.5	252.4	200	-6,544	-1	-3	3	3	252.4	3.5	
300	7.0	252.4	300	-6,444	-4	-12	12	12	252.4	3.5	
400	10.5	252.4	398	-6,346	-8	-26	27	27	252.4	3.5	
492	13.7	252.4	489	-6,255	-14	-45	47	47	252.4	3.5	KOP
500	14.0	252.4	496	-6,248	-15	-46	49	49	252.4	3.5	
600	17.5	252.4	592	-6,152	-23	-72	76	76	252.4	3.5	
700	21.0	252.4	687	-6,057	-33	-104	109	109	252.4	3.5	

Catamount Energy Partners

Proposal Report



Database:	San Juan Basin	Local Coordinate Reference:	Map Coordinates
Company:		TVD Reference:	Mean Sea Level
Project:	Jaques Sec 27	MD Reference:	Jaques 10
Site:	Fruitland Coal	North reference:	Grid North
Well:	Jaques 10	Survey Calculation Method:	Minimum Curvature
Wellbore:			
Proposal:	Plan #1		

Planned Survey											
Measured Depth (ft)	Incl. (°)	Az. (°)	Vertical Depth (ft)	Sub Sea Depth (ft)	+N/-S (ft)	+E/-W (ft)	Vertical Section (ft)	Closure Distance (ft)	Closure Azimuth (°)	Dogleg Rate (°/100ft)	Comments/ Formations
800	24.5	252.4	779	-5,965	-44	-141	147	147	252.4	3.5	
900	28.0	252.4	869	-5,875	-58	-183	192	192	252.4	3.5	
1,000	31.5	252.4	955	-5,789	-73	-230	241	241	252.4	3.5	
1,100	35.0	252.4	1,039	-5,705	-89	-282	296	296	252.4	3.5	
1,200	38.5	252.4	1,119	-5,625	-107	-339	356	356	252.4	3.5	
1,300	42.0	252.4	1,195	-5,549	-127	-401	420	420	252.4	3.5	
1,302	42.1	252.4	1,197	-5,547	-127	-402	422	422	252.4	3.5	
1,400	42.1	252.4	1,270	-5,474	-147	-465	487	487	252.4	0.0	
1,500	42.1	252.4	1,344	-5,400	-167	-529	554	554	252.4	0.0	
1,600	42.1	252.4	1,418	-5,326	-187	-593	621	621	252.4	0.0	
1,700	42.1	252.4	1,492	-5,252	-208	-656	688	688	252.4	0.0	
1,800	42.1	252.4	1,567	-5,177	-228	-720	755	755	252.4	0.0	
1,900	42.1	252.4	1,641	-5,103	-248	-784	822	822	252.4	0.0	
1,966	42.1	252.4	1,690	-5,054	-261	-826	867	867	252.4	0.0	Animas
2,000	42.1	252.4	1,715	-5,029	-268	-848	889	889	252.4	0.0	
2,100	42.1	252.4	1,789	-4,955	-288	-912	956	956	252.4	0.0	
2,200	42.1	252.4	1,864	-4,880	-309	-976	1,023	1,023	252.4	0.0	
2,300	42.1	252.4	1,938	-4,806	-329	-1,040	1,090	1,090	252.4	0.0	
2,350	42.1	252.4	1,975	-4,769	-339	-1,072	1,124	1,124	252.4	0.0	Kirtland Shale
2,400	42.1	252.4	2,012	-4,732	-349	-1,103	1,157	1,157	252.4	0.0	
2,500	42.1	252.4	2,086	-4,658	-369	-1,167	1,224	1,224	252.4	0.0	
2,600	42.1	252.4	2,161	-4,583	-389	-1,231	1,291	1,291	252.4	0.0	
2,650	42.1	252.4	2,198	-4,546	-400	-1,263	1,325	1,325	252.4	0.0	Farmington SS
2,700	42.1	252.4	2,235	-4,509	-410	-1,295	1,358	1,358	252.4	0.0	
2,800	42.1	252.4	2,309	-4,435	-430	-1,359	1,425	1,425	252.4	0.0	
2,900	42.1	252.4	2,383	-4,361	-450	-1,423	1,492	1,492	252.4	0.0	
3,000	42.1	252.4	2,458	-4,286	-470	-1,487	1,559	1,559	252.4	0.0	
3,100	42.1	252.4	2,532	-4,212	-490	-1,551	1,626	1,626	252.4	0.0	
3,200	42.1	252.4	2,606	-4,138	-511	-1,614	1,693	1,693	252.4	0.0	
3,292	42.1	252.4	2,674	-4,070	-529	-1,673	1,755	1,755	252.4	0.0	Lower Kirtland Shale
3,300	42.1	252.4	2,680	-4,064	-531	-1,678	1,760	1,760	252.4	0.0	
3,400	42.1	252.4	2,754	-3,990	-551	-1,742	1,827	1,827	252.4	0.0	
3,500	42.1	252.4	2,829	-3,915	-571	-1,806	1,894	1,894	252.4	0.0	
3,600	42.1	252.4	2,903	-3,841	-591	-1,870	1,961	1,961	252.4	0.0	
3,700	42.1	252.4	2,977	-3,767	-612	-1,934	2,028	2,028	252.4	0.0	
3,733	42.1	252.4	3,002	-3,742	-618	-1,955	2,051	2,051	252.4	0.0	Upper Fruitland Coal
3,800	42.1	252.4	3,051	-3,693	-632	-1,998	2,095	2,095	252.4	0.0	
3,884	42.1	252.4	3,114	-3,630	-649	-2,051	2,152	2,152	252.4	0.0	Main Fruitland Coal
3,900	42.1	252.4	3,126	-3,618	-652	-2,062	2,162	2,162	252.4	0.0	
3,978	42.1	252.4	3,184	-3,560	-668	-2,112	2,215	2,215	252.4	0.0	Pictured Cliffs
4,000	42.1	252.4	3,200	-3,544	-672	-2,125	2,229	2,229	252.4	0.0	
4,100	42.1	252.4	3,274	-3,470	-693	-2,189	2,296	2,296	252.4	0.0	
4,181	42.1	252.4	3,334	-3,410	-709	-2,241	2,350	2,350	252.4	0.0	TD

Catamount Energy Partners

Proposal Report



Database:	San Juan Basin	Local Coordinate Reference:	Map Coordinates
Company:		TVD Reference:	Mean Sea Level
Project:	Jaques Sec 27	MD Reference:	Jaques 10
Site:	Fruitland Coal	North reference:	Grid North
Well:	Jaques 10	Survey Calculation Method:	Minimum Curvature
Wellbore:			
Proposal:	Plan #1		

Targets									
Target Name	Dip Angle (°)	Dip Dir. (°)	TVD (ft)	+N/-S (ft)	+E/-W (ft)	Northing (ft)	Easting (ft)	Latitude	Longitude
-hit/miss target									
-Shape									
KOP			500	0	0	+1,155,036	+2,358,061	37.07167938° N	107.70037527° W
- proposal misses the target center by 48ft at 492ft MD (489TVD, -14, -45)									
- Point									
TD			3,334	-709	-2,241	+1,154,327	+2,355,820	37.06958811° N	107.70799565° W
- proposal hits the target center									
- Point									

Formations					
Measured Depth (ft)	Vertical Depth (ft)	Subsea Depth (ft)	Name	Dip Angle (°)	Dip Direction (°)
1,966	-5,054	-5,054	Animas	0.0	0.0
2,350	-4,769	-4,769	Kirtland Shale	0.0	0.0
2,650	-4,546	-4,546	Farmington SS	0.0	0.0
3,292	-4,070	-4,070	Lower Kirtland Shale	0.0	0.0
3,733	-3,742	-3,742	Upper Fruitland Coal	0.0	0.0
3,884	-3,630	-3,630	Main Fruitland Coal	0.0	0.0
3,978	-3,560	-3,560	Pictured Cliffs	0.0	0.0

Checked By:	Approved By:	Date:
-------------	--------------	-------

Disclaimer Notice

Catamount Energy Partners makes no warranty of any kind with respect to the subject matter included herein or the completeness or accuracy of this document.

Catamount Energy Partners are not responsible for any actions (or lack thereof) taken as a result of relying on or in any way using information contained in this document and in no event shall be liable for any damages resulting from reliance on or use of this information.